

# INCIDENT ACTION PLAN WHITMORE FIRE

August 14/15, 2021

Operational Periods 0600-1800 / 1800-0600

---



IAP

ZOOM Briefing



PHONE: 1-699-254-5252  
Meeting ID: 160 329 1379  
Passcode: 2522064



CHECK IN



MAPS

WA-COA-200106  
PAN7SC[P] (1522)  
221 KTO



## INCIDENT OBJECTIVES (ICS 202)

<b>1. Incident Name:</b>	<b>2. Operational Period: DAY / NIGHT</b>	
WHITMORE	Date/Time From: 08/14/2021 0600      SAT	Date/Time To: 08/15/2021 0600      SUN
<b>3. Objective(s):</b>		
<p>Implement risk management practices for the safety of firefighters, other responders and the public as the first priority.</p> <p>Minimize impacts to private property, critical infrastructure, timber, cultural and natural resources including water, fish, wildlife, and range land.</p> <p>Maintain and strengthen community relationships and provide timely fire information to the public and cooperators.</p> <p>Establish and maintain all current COVID-19 mitigation protocols according to CDC and agency guidelines.</p>		
<b>4. Operational Period Command Emphasis:</b>		
Implement direct suppression tactics where safe to do so to minimize fire size, protect timber values and private property.		
<b>General Situational Awareness:</b>		
Monitor the weather conditions and base all actions on current and expected fire behavior.		
<b>5. Site Safety Plan Required?</b> Yes <input type="checkbox"/> No <input checked="" type="checkbox"/>		
<b>Approved Site Safety Plan(s) Located</b>		
<b>6. Incident Action Plan</b> (the items checked below are included in this Incident Action Plan):		
<input checked="" type="checkbox"/> ICS 202 <input checked="" type="checkbox"/> ICS 203 <input checked="" type="checkbox"/> ICS 204 <input checked="" type="checkbox"/> ICS 205 <input type="checkbox"/> ICS 205A <input checked="" type="checkbox"/> ICS 206	<input type="checkbox"/> ICS 207 <input type="checkbox"/> ICS 208 <input checked="" type="checkbox"/> ICS 220 <input checked="" type="checkbox"/> Map/Chart <input checked="" type="checkbox"/> Weather Forecast/Tides/Currents	<b>Other Attachments:</b> <input type="checkbox"/> _____ <input type="checkbox"/> _____ <input type="checkbox"/> _____ <input type="checkbox"/> _____
<b>7. Prepared by:</b> HOWARD JOHNSON      Position/Title:      PSC2	Signature: <i>Howard Johnson /S/</i>	
<b>8. Approved by Incident Commander:</b>	Name:      BOBBY SHINDELAR	Signature: <i>Bobby Shindelar /S/</i>
<b>ICS 202</b>	<b>IAP Page</b>	Date/Time:      8/13/2021 2000

## ORGANIZATION ASSIGNMENT LIST (ICS 203)

<b>1. Incident Name:</b>		<b>2. Operational Period: DAY / NIGHT</b>	
WHITMORE		Date/Time From: 08/14/2021 0600	Date/Time To: 08/15/2021 0600
		SAT	SUN
<b>3. Incident Commander(s) and Command Staff:</b>		COMMUNICATIONS UNIT	MISSY PARKER
IC/UC	BOBBY SHINDELAR	MEDICAL UNIT	EAMONN RYAN; DIANA BRAUN LEE VENNING (T)
DEPUTY		FOOD UNIT	ALEXANDER LILLA
SAFETY OFFICER	TROY CORN JACK CATES; DON WALLER (T)		
INFORMATION OFFICER	MARY BEAN ROLAND EMETAZ		
LIAISON OFFICER	SCOTT CRAWFORD		
HUMAN RESOURCE SPECIALIST	SUSIE MANEZES		
HEALTH LIAISON	LIV STECKER		
		<b>7. Operations Section:</b>	
		OPS SECTION CHIEF	MATT CASTLE KURT RANTA (T)
		PLANNING OPS	JEFF BOUSCHOR JEROMY WILSON (T)
<b>4. Agency/Organization Representative(s):</b>			
<b>Agency/Organization</b>	<b>Name</b>		
COLVILLE AGENCY	PHIL WAPATO		
DNR	PAT RYAN		
		DIVISION/GROUP	A/Z/W/P
		DIVISION/GROUP	C
		DIVISION/GROUP	F
			NIKIA HERNANDEZ
			DAN OBERG
			LARRY LEACH JAMES DICKINSON (T)
		DIVISION/GROUP	L
		DIVISION/GROUP	M
			BOB HINDS
			MIKE JACKSON SAM STEINSHOUER (T)
		DIVISION/GROUP	STRUCTURE/CONTINGENCY
		DIVISION/GROUP	NIGHT
			BRANDYN HARVEY
			NICK SCHREINER
<b>5. Planning Section:</b>			
CHIEF	HOWARD JOHNSON JILL JOHNSON (T)		
RESOURCES UNIT	NATHAN JEFFRIES (VIRTUAL)		
SITUATION UNIT	DAVE WISCHER		
DOCUMENTATION UNIT			
DEMOBILIZATION UNIT	MIKE HESTON (VIRTUAL)		
FIRE BEHAVIOR ANALYST	DON STRAND		
GIS SPECIALIST	SHAWN BUSHNELL MIKE TONKEL (T)		
TECHNOLOGY SUPPORT SPECIALIST	GEORGE JENKINS TODD MALLERY		
INCIDENT METEOROLOGIST	BOB TOBIN		
<b>7b. Air Operations Branch:</b>			
		AIR OPS BRANCH DIRECTOR	PAUL BALFOUR
		AIR ATTACK SUPERVISOR	MIKE STOUT
		AIR SUPPORT SUPERVISOR	TIM LYDA
		AIR TANKER COORDINATOR	
<b>8. Finance/Administration Section:</b>			
		CHIEF	CHERI FULLER CHRISTINA GOEBEL (T)
		TIME UNIT	CAROL LONG
		COMPENSATION UNIT	CHERI FULLER
		PROCUREMENT UNIT	MARK BOHNET
		COST UNIT	KATHLEEN HIGH (VIRTUAL)
<b>6. Logistics Section:</b>			
CHIEF	DAN SOPTICH		
DEPUTY	KEVIN HAUGHTON		
SUPPLY UNIT	JOHN KAUPA		
FACILITIES UNIT	KAREN ZIRKLE		
GROUND SUPPORT UNIT	MARK ANDERSON		
<b>9. Prepared By:</b>	<b>Name:</b> JILL JOHNSON	<b>Position/Title:</b> PSC2 (T)	<b>Signature:</b>
ICS 203	IAP Page	<b>Date/Time:</b> 08/13/2021 1546	<i>Jill Johnson /SI/</i>

**Fire Weather Forecast**

**FORECAST NO:** 10  
**PREDICTION FOR:** Saturday-Sunday night  
**SHIFT DATE:** August 14-15, 2021 0600-0600  
**TIME AND DATE**  
**FORECAST ISSUED:** 8/13/2021 at 2000

**INCIDENT:** Whitmore Fire  
**UNIT:** Colville Reservation  
**SIGNED:** Bob Tobin  
**Incident Meteorologist (IMET)**

---

**...Excessive Heat Warning remains in effect until 8 PM PD Saturday...**  
**...FIRE WEATHER WATCH in effect from Sunday afternoon through Sunday evening for Winds and Low Relative Humidity for the Northern Columbia Basin...**

**Weather Discussion:** High pressure will begin to flatten today ahead of a dry cold front expected Sunday evening. Conditions will remain warm and dry. The dense smoke that has been over the area that past few days is not expected to mix out until the front comes through. With that in mind, temperatures will likely be similar to what we saw today. Winds will be on the increase a bit Saturday and become breezy/gusty Sunday ahead of the front. Hopefully the combination of the front and stronger winds will allow the smoke to mix out Sunday night and Monday. Temperatures down 10 degrees or more on Monday. Little if any precipitation is expected

**WEATHER FORECAST:**

**Today:**

**SKY/WEATHER:** Partly cloudy and very smokey. Continued warm.  
**High Temperature...**92-97 above 3000 feet and 98-103 below 3000 feet.  
**24hr Change...**Up 3-6.  
**Min RH.....**12-22 % above 3000 feet and 10-20% below 3000 feet.  
**24hr Change...**Little Change.  
**20-FOOT WINDS:** Southwest winds 10-15 mph with gusts to 20 mph.  
**CWR (>=0.10")....**0% **LAL....**1 **Haines Index...4 (Low)** **Mixing Height...10100 ft AGL**

**Tonight:**

**Weather:** Partly cloudy. Heavy smoke.  
**Low Temperature...**65-70.  
**Max RH.....**35-45%  
**20-FOOT WINDS:** North-northeast 5-9 mph.  
**CWR (>=0.10")....**0% **LAL...1.**

**Sunday:**

**SKY/WEATHER:** Partly to mostly cloudy and smokey.  
**High Temperature...**89-94 above 3000 feet and 96-100 below 3000 feet.  
**Min RH.....**18-22% above 3000 feet...10-20% below 3000 feet  
**20-FOOT WINDS:** Southwest-west 12-15 mph with gusts 25-30 mph.  
**CWR (>=0.10")....** 0% **LAL....**1 **Haines Index...3 (Very Low)** **Mixing Height...11000 ft AGL**

**Extended Outlook**

**Monday...**Partly to mostly cloudy. Low 64-68...High 82-92. Min RH: 15-25% West-Northwest 10-15 mph with gusts to 25 mph.  
**Tuesday...**Partly cloudy. Low: 55-60...High: 76-82. Min RH: 15-25% Winds: Northwest 10-15 mph with gusts to 20 mph.

# FIRE BEHAVIOR FORECAST

FORECAST NUMBER: 10	TYPE OF FIRE: Wildland
FIRE NAME: Whitmore	OPERATIONAL PERIOD: Aug 14-15, 2021 Day-Night-Shift
DATE ISSUED: Aug 12, 2021	TIME ISSUED: 2000
UNIT: WA-COA	Don Strand FBAN

## INPUTS

### WEATHER SUMMARY:

...Excessive Heat Warning remains in effect until 8 PM PD Saturday...

...FIRE WEATHER WATCH in effect from Sunday afternoon through Sunday evening for Winds and Low Relative Humidity for the Northern Columbia Basin...

Partly cloudy and very smokey. Continued warm and dry. Max temp near 100, Min RH 10%. Winds- Southwest 10 to 15 mph with gusts to 20 mph... Haines 4

## OUTPUTS

### FIRE BEHAVIOR

#### GENERAL:

- Another day with very dry fuels, very warm temps and breezy conditions. ERCs' for Kramer yesterday are above the 90<sup>th</sup> percentile. Fire behavior potential today will be very high but potentially moderated due to smoke haze. Any spot fire that gets established in the timber litter fuels will be difficult to control. If a spot fire gets established in the lighter grass and sage brush fuels, potential for significant spread exists. Fire will remain active in areas with available fuels with potential to torch and spot. Expect higher fire intensities where there is wind/slope alignment and available fuels.
- Fuels consist mixed conifer and pine with grass and brush. Logging slash is in scattered locations. There are some areas of regeneration from past timber harvest and 5 to 10-year-old fire scar regen with grass and brush understory. Much of the lower elevations are covered with grass and sagebrush with timbered stringers in the deep draws.
- Most spotting will be short range and also from roll outs on steeper ground. Most spotting will be short range although with wind gusts, spotting near 0.3 mile possible.
- **Probability of Ignition will be near 100% unshaded and 70% shaded during the warmest part of the day.**

#### SPECIFIC:

**DIV A/Z/W/P:** This portion of the fire will be the warmest and driest portion of the fire.

**DIV C:** Continue to watch for heat near the line and with wind possibility for spotting exist. Dozer berms may still contain heat that can spread to adjacent fuels. Light grass and brush fuels will readily available for fire spread.. Any spot fires in the adjacent fuels will rapidly spread.

**DIV F:** Pay attention of any roll outs. Areas of dirty burn will continue to clean up.. Afternoon winds will be pushing drift smoke across road south of DP 120. Potential exists for spots across lines

**DIV L:** Watch for flare ups and spotting in any areas of dirty burns adjacent to fire lines. Winds in the gap south of DP 126 may channel and contribute to flare ups

**DIV M:** Continue to monitor for heat near fire lines

**Initial Attack:** In the event we respond to a new start, any new start in the area will have potential rapid rates of spread. Hot and dry weather with high Probability of Ignition, any start will likely spot. Poor nighttime RH recovery will allow for 24-hour drying of fuels and increase the burning period.

**NIGHT:** Fire activity remaining from day shift will continue to be active well after dark due to forecasted poor RH recovery overnight. Continue to monitor for spots. Potential for heat in dozer berm and stump holes are burning deep.

**AIR OPERATIONS:** Watch for turbulence in the complex terrain. Smoke haze may affect visibility.

## SAFETY

- **Watch out where you walk. Stump holes burning very deep**
- **Smoke haze may moderate fire activity some, but with any clearing, expect increasing fire activity. Smoke haze will also limit visibility so any spot fire may become larger before noticed.**
- **Maintain good Situational Awareness to avoid complacency.**

# Safety Message

14-15 August 2021

**INCIDENT: Whitmore Fire**

**OPERATIONAL PERIOD: 0600-0600**

**TOPICS: COMMUNICATION and MEDICAL INCIDENTS**

## **COMMON BARRIERS TO EFFECTIVE COMMUNICATION INCLUDE:**

**Stress and out-of-control emotion.** When you're stressed or emotionally overwhelmed, you're more likely to misread other people, send confusing or off-putting nonverbal signals, and lapse into unhealthy knee-jerk patterns of behavior. To avoid conflict and misunderstandings, you can learn how to quickly calm down before continuing a conversation.

## **ICS206: MEDICAL RESOURCE SUMMARY**

The IAP has a resource (**ICS206**) that shows medical resource information to include assigned medical personnel, medical equipment, helispots and transport times (air and ground). This is to be used with the **Medical Incident Report (MIR)** that can be found at the end of the IAP or IRPG. Practice how to use the 206 and MIR together!!!!

**SAFETY OFFICER: Troy Corn, Jack Cates, Don Waller (T)**

# Deliberate Risk Assessment-Hazard Summary

## 14-15 August 2021

Hazard	Mitigation	Post Risk
<b>Hazard Trees</b>	Use avoidance to limit exposure time. Snag ahead to avoid exposure. Use qualified fallers, blasting, or alternate methods if needed. Conduct on- going risk analysis of all work areas. Follow Hazard Tree Safety Guidelines (IRPG page 22).	<b>High</b>
<b>Initial Attack</b>	Ensure identified IA resources are briefed of expectations and ensure communication plan is provided. Ensure resources are briefed on IA command structure. Provide identified crews with area maps.	Moderate
<b>Steep Terrain/Gravity</b>	Do not work crews above or below each other. Post lookouts for rolling material. Watch footing in loose soil, rock and around vegetation. Do not work below heavy equipment. Scout and identify travel routes.	Moderate
<b>Physical Factors</b>	<b>Maintain hydration schedule.</b> Closely monitor work rate and implement rest periods. Maintain nutrition. Ensure adequate work/rest.	Moderate
Extraction Time	Identify medivac sites and helispots. Initiate ground transport to accident site. Review IWI protocol to ensure familiarity.	<b>High</b>
Transportation	Signing of all incident roads that provide access to divisions. Practice defensive driving. In local communities obey the posted speed limits. Use reader boards to control entry as needed. Identify and evaluate contingency and alternate escape and travel routes.	<b>High</b>
Heavy Equipment	Post lookouts around equipment work areas. Establish communications with equipment boss and operator. Do not work down slope from equipment.	<b>High</b>
Transmission/Power Lines	Maintain one span radius from any downed line or compromised pole, be aware of smoke conductivity, report any downed lines or burning poles.	<b>High</b>
Aircraft	Utilize Air Attack. Ensure all resources are a safe distance from all bucket and retardant drops. Utilize air to ground primary radio channel.	High
Initial Attack	Ensure identified IA resources are briefed of expectations and ensure communication plan is provided. Ensure resources are briefed on IA command structure. Provide identified crews with area maps.	Moderate
Unburned Fuels/Firing Ops	Ensure management action points are implemented and followed. Weather updates as needed during burning operations. Locate indirect firelines to minimize the amount of unburned fuels. Ensure communications between all firing operations. Establish road security at all firing sites. Follow approved firing plan for unburned fuels.	Moderate
Environmental Factors	Assess for known allergies and report to medical personnel. Obtain Bee/wasp spray and yellow jacket traps. Maintain an awareness of livestock and rattlesnakes.	Moderate
Fire Behavior	Be aware of burn windows and weather impacts and min/max RH for flashy fuels/local conditions. Report changes to FBAN and IMET.	Moderate
Communication	Evaluate for dead zones prior to engagement. Utilize human repeaters as needed. Ensure accountability of resources in problem areas. Be prepared if local traffic maximizes air time.	Moderate
Viral Transmission Mitigations, Communicable Disease	Maintain isolated ICP (remote briefings, etc), maintain social distancing, and wear face coverings in accordance with CDC recommendations. Report and isolate if not feeling well.	Low
Public Interaction	Place new road closures as necessary and maintain current closures. Provide signage on all perimeter roads warning of closures and fire activity. Request tribal police presence on SR155 access roads, Omak Lake and Columbia River Road as needed. Maintain awareness of evacuation areas and provide accurate information dissemination.	Low

**Division/Group Assignment List (ICS 204 WF)**  
**Controlled Unclassified Information//Basic**

<b>1. Incident Name:</b>			<b>3.</b>			
WHITMORE			<b>Branch:</b>		<b>Division/Group</b>	
<b>2. Operational Period: DAY / NIGHT</b>					<b>A/Z/W/P/M</b>	
Date/Time From: 08/14/2021 0600 SAT		Date/Time To: 08/15/2021 0600 SUN				
<b>4. Operations Personnel</b>						
<b>OPERATIONS CHIEF</b>		MATT CASTLE; KURT RANTA (T) JEFF BOUSCHOR; JEROMY WILSON (T)		<b>DIVISION/GROUP SUPERVISOR</b>		MICHAEL JACKSON SAM STEINSHOUER* (T)
<b>SAFETY OFFICER</b>		TROY CORN; JACK CATES DON WALLER (T)		<b>AIR ATTACK SUPERVISOR</b>		MIKE STOUT
<b>5. Resources Assigned this Period</b>						
Strike Team / Task Force / Resource Designator		LWD	Leader	Number Persons	Drop Off PT./Time	Pick Up PT./Time
E-11 ENG6 CONNECTICUT INTERSTATE*		08/25	RICHARD J SCALORA	4	ICP/0600	ICP/1800
E-192 ENG6 MID COLUMBIA RESOURCES*		08/17	DAVID JOHNSON	3	ICP/0600	ICP/1800
E-197 ENG6 CHAFEE CO. FPD V100		08/22	BRIAN D WELCH	3	ICP/0600	ICP/1800
E-185 WTS2 1A CONSTRUCTION & FIRE		08/18	TERRAL BURR	1	ICP/0600	ICP/1800
E-184 DOZ3 TUNK CREEK*		08/23	CLARENCE FINLEY	2	ICP/0600	ICP/1800
O-36 EMPF MEDIC 3		08/21	JUSTIN SMITH	1	ICP/0600	ICP/1800
<b>6. Control Operations/Work Assignments:</b>						
<p>TASK - Secure fire line within its existing footprint, mop up as needed.          PURPOSE - Protect property and natural resources, outside fire footprint.          END STATE - Fire is contained. Structures and private property are no longer threatened.</p>						
<b>7. Special Instructions:</b>						
<ul style="list-style-type: none"> <li>Return all empty gas cans to supply!</li> <li>GPS all dozer line and get updates to SITL</li> </ul> <p>*=Resource identified for initial attack. Be prepared to respond to IA as requested thru communications and as availability allows.</p>						
<b>8. Division/Group Communication Summary</b>						
Function	Channel	RX Frequency N/W	RX Tone/NAC	TX Frequency N/W	TX Tone/NAC	Mode
TACTICAL	4	166.7250	146.2	166.7250	146.2	A
COMMAND	7	173.9250	146.2	169.8375	146.2	A
COMMAND	8	159.4275	192.8	151.2725	192.8	A
COMMAND	10	172.5375	146.2	163.5500	146.2	A
AIR TO GROUND	14	171.8625		171.8625		A
<b>9. Prepared By (Resource Unit Leader)</b>			<b>Approved By (Planning Section Chief)</b>		<b>Date</b>	<b>Time</b>
NATHAN JEFFRIES			HOWARD JOHNSON		08/13/2021	2000



**Division/Group Assignment List (ICS 204 WF)**  
**Controlled Unclassified Information//Basic**

<b>1. Incident Name:</b>			<b>3.</b>			
WHITMORE			<b>Branch:</b>		<b>Division/Group</b>	
<b>2. Operational Period: DAY / NIGHT</b>					<b>C</b>	
Date/Time From: 08/14/2021 0600 SAT		Date/Time To: 08/15/2021 0600 SUN				
<b>4. Operations Personnel</b>						
<b>OPERATIONS CHIEF</b>		MATT CASTLE; KURT RANTA (T) JEFF BOUSCHOR; JEROMY WILSON (T)		<b>DIVISION/GROUP SUPERVISOR</b>		DANIEL OBERG
<b>SAFETY OFFICER</b>		TROY CORN; JACK CATES DON WALLER (T)		<b>AIR ATTACK SUPERVISOR</b>		MIKE STOUT
<b>5. Resources Assigned this Period</b>						
Strike Team / Task Force / Resource Designator		LWD	Leader	Number Persons	Drop Off PT./Time	Pick Up PT./Time
O-174 SOF2		08/23	PAUL BRNA	1	ICP/0600	ICP/1800
E-8.1 TFLD		08/22	LAFE SACKETT	1	ICP/0600	ICP/1800
O-185 FMOD SWEDBERG CONTRACTING		08/24	JAMES MCKIDDY	2	ICP/0600	ICP/1800
C-3 HC2I MOCC INTERAGENCY CREW #4		08/21	TIMOTHY PERREN	20	ICP/0600	ICP/1800
C-21 HC2 FRANCO REFORESTATION		08/26	ARTURO QUEVEDO	20	ICP/0600	ICP/1800
E-7 ENG6 OREGON WOODS, INC.		08/19	BEN COOK	3	ICP/0600	ICP/1800
E-133 ENG6 BIA AZ-NAA E-3661		08/25	TONY WILLIAMS	3	ICP/0600	ICP/1800
E-179 ENG3 WILDFIRE SUPPORT TEAM		08/25	JOEY DEMARTINO	3	ICP/0600	ICP/1800
E-205 ENG6 BIG STATE WILDFIRE		08/26	MATTHEW FINN IV	3	ICP/0600	ICP/1800
E-18 WTS2 PORTABLE ROCK PRODUCTION		08/19	JIMMY POWELL	1	ICP/0600	ICP/1800
E-5001 WTS2 ELITE WATER WAGON		08/25	TYLER PEASLEY	1	ICP/0600	ICP/1800
E-130 SKG3 TUNK CREEK LLC		08/22	DYLAN GREEN	2	ICP/0600	ICP/1800
E-5000 DOZ2 SCFD9*		08/20	MICHAEL WOLF	1	ICP/0600	ICP/1800
E-5 AMBU 1 MED TRANSPORT (ALS)		08/21	JENNIFER BOSTWICK	2	ICP/0600	ICP/1800
<b>8. Division/Group Communication Summary</b>						
Function	Channel	RX Frequency N/W	RX Tone/NAC	TX Frequency N/W	TX Tone/NAC	Mode
TACTICAL	6	168.2500	146.2	168.2500	146.2	A
COMMAND	7	173.9250	146.2	169.8375	146.2	A
COMMAND	8	159.4275	192.8	151.2725	192.8	A
COMMAND	10	172.5375	146.2	163.5500	146.2	A
AIR TO GROUND	14	171.8625		171.8625		A
<b>9. Prepared By (Resource Unit Leader)</b>			<b>Approved By (Planning Section Chief)</b>		<b>Date</b>	<b>Time</b>
NATHAN JEFFRIES			HOWARD JOHNSON		08/13/2021	2000

## Division/Group Assignment List (ICS 204 WF)

Controlled Unclassified Information//Basic

<b>1. Incident Name:</b>			<b>3.</b>			
WHITMORE			<b>Branch:</b>		<b>Division/Group</b>  <b>C</b>	
<b>2. Operational Period: DAY / NIGHT</b>						
Date/Time From: 08/14/2021 0600      SAT		Date/Time To: 08/15/2021 0600      SUN				
<b>4. Operations Personnel</b>						
<b>OPERATIONS CHIEF</b>		MATT CASTLE; KURT RANTA (T) JEFF BOUSCHOR; JEROMY WILSON (T)		<b>DIVISION/GROUP SUPERVISOR</b>		DANIEL OBERG
<b>SAFETY OFFICER</b>		TROY CORN; JACK CATES DON WALLER (T)		<b>AIR ATTACK SUPERVISOR</b>		MIKE STOUT
<b>5. Resources Assigned this Period</b>						
Strike Team / Task Force / Resource Designator		LWD	Leader	Number Persons	Drop Off PT./Time	Pick Up PT./Time
O-37 EMPF MEDIC 2		08/21	JENNEL SMITH	1	ICP/0600	ICP/1800
O-175 EMT 2		08/18	KADY LUKOWICZ	1	ICP/0600	ICP/1800
<b>6. Control Operations/Work Assignments:</b>						
<p>TASK - Mop up and secure completed fireline, scout and establish new firelines as necessary to keep fire East of Rattlesnake Creek and Peter Flat.</p> <p>PURPOSE - Protect property and resources; limit further fire spread to the West.</p> <p>END STATE - Fireline is established and secured and fire is contained East of Rattlesnake creek and Peter Flat.</p>						
<b>7. Special Instructions:</b>						
<ul style="list-style-type: none"> <li>Return all empty gas cans to supply!</li> <li>GPS all dozer line and get updates to SITL</li> </ul> <p>*=Resource identified for initial attack. Be prepared to respond to IA as requested thru communications and as availability allows.</p>						
<b>8. Division/Group Communication Summary</b>						
Function	Channel	RX Frequency N/W	RX Tone/NAC	TX Frequency N/W	TX Tone/NAC	Mode
TACTICAL	6	168.2500	146.2	168.2500	146.2	A
COMMAND	7	173.9250	146.2	169.8375	146.2	A
COMMAND	8	159.4275	192.8	151.2725	192.8	A
COMMAND	10	172.5375	146.2	163.5500	146.2	A
AIR TO GROUND	14	171.8625		171.8625		A
<b>9. Prepared By (Resource Unit Leader)</b>			<b>Approved By (Planning Section Chief)</b>		<b>Date</b>	<b>Time</b>
NATHAN JEFFRIES			HOWARD JOHNSON		08/13/2021	2000

**Division/Group Assignment List (ICS 204 WF)**  
**Controlled Unclassified Information//Basic**

<b>1. Incident Name:</b>			<b>3.</b>			
WHITMORE			<b>Branch:</b>		<b>Division/Group</b>	
<b>2. Operational Period: DAY / NIGHT</b>					<b>F</b>	
Date/Time From: 08/14/2021 0600 SAT		Date/Time To: 08/15/2021 0600 SUN				
<b>4. Operations Personnel</b>						
<b>OPERATIONS CHIEF</b>		MATT CASTLE; KURT RANTA (T) JEFF BOUSCHOR; JEROMY WILSON (T)		<b>DIVISION/GROUP SUPERVISOR</b>		LARRY LEACH JAMES DICKINSON (T)
<b>SAFETY OFFICER</b>		TROY CORN; JACK CATES DON WALLER (T)		<b>AIR ATTACK SUPERVISOR</b>		MIKE STOUT
<b>5. Resources Assigned this Period</b>						
Strike Team / Task Force / Resource Designator		LWD	Leader	Number Persons	Drop Off PT./Time	Pick Up PT./Time
O-1.61 SOF2		08/21	JOSHUA NORTHRUP	1	ICP/0600	ICP/1800
O-118 TFLD		08/22	TROY MAGUIRE	1	ICP/0600	ICP/1800
O-12 HEQB		08/21	TRAVIS BRUCH	1	ICP/0600	ICP/1800
O-186 FMOD TOP NOTCH		08/24	KYLE ARMIJO	2	ICP/0600	ICP/1800
C-1 HC2 GRIZZLY FIREFIGHTERS INC*		08/21	KARLA BEJAR	20	ICP/0600	ICP/1800
E-8 ENG6 NM-EMP NPS		08/22	ELI PINO	6	ICP/0600	ICP/1800
E-193 ENG6 THUNDERBOLT FIRE SERVICE		08/18	TOBY YAZZIE	3	ICP/0600	ICP/1800
E-200 ENG5 PACIFIC OASIS		08/26	CASEY DOWNES	3	ICP/0600	ICP/1800
E-203 ENG4 JD FORESTRY		08/26	LUIS LOPEZ	3	ICP/0600	ICP/1800
E-204 ENG6 ROGUE RIVER FIRE AND WATER		08/26	JASON FOSHEE	3	ICP/0600	ICP/1800
E-206 ENG6 LATE SUMMERS*		08/24	BRADLEY BAKER	3	ICP/0600	ICP/1800
E-210 ENG6 BLAZE RUNNERS		08/27			ICP/0600	ICP/1800
E-17 WTS2 FYR FLY LTD #68		08/19	LINN LAMB	1	ICP/0600	ICP/1800
E-19 WTS2 BOMBEROS WATER LLC		08/19	KURT FIGG-HOBLYN	1	ICP/0600	ICP/1800
E-187 WTS2 OWENS		08/19	FRANKLIN OWENS	1	ICP/0600	ICP/1800
E-222 WTS2 WAYNE ONEY TENDER		08/27	WAYNE ONEY	1	ICP/0600	ICP/1800
<b>8. Division/Group Communication Summary</b>						
Function	Channel	RX Frequency N/W	RX Tone/NAC	TX Frequency N/W	TX Tone/NAC	Mode
TACTICAL	2	168.2000	146.2	168.2000	146.2	A
COMMAND	7	173.9250	146.2	169.8375	146.2	A
COMMAND	8	159.4275	192.8	151.2725	192.8	A
COMMAND	10	172.5375	146.2	163.5500	146.2	A
AIR TO GROUND	14	171.8625		171.8625		A
<b>9. Prepared By (Resource Unit Leader)</b>			<b>Approved By (Planning Section Chief)</b>		<b>Date</b>	<b>Time</b>
NATHAN JEFFRIES			HOWARD JOHNSON		08/13/2021	2000

**Division/Group Assignment List (ICS 204 WF)**  
**Controlled Unclassified Information//Basic**

<b>1. Incident Name:</b>				<b>3.</b>		
WHITMORE				<b>Branch:</b>	<b>Division/Group</b>  <b>F</b>	
<b>2. Operational Period: DAY / NIGHT</b>						
Date/Time From: 08/14/2021 0600 SAT		Date/Time To: 08/15/2021 0600 SUN				
<b>4. Operations Personnel</b>						
<b>OPERATIONS CHIEF</b>		MATT CASTLE; KURT RANTA (T) JEFF BOUSCHOR; JEROMY WILSON (T)		<b>DIVISION/GROUP SUPERVISOR</b>		LARRY LEACH JAMES DICKINSON (T)
<b>SAFETY OFFICER</b>		TROY CORN; JACK CATES DON WALLER (T)		<b>AIR ATTACK SUPERVISOR</b>		MIKE STOUT
<b>5. Resources Assigned this Period</b>						
Strike Team / Task Force / Resource Designator		LWD	Leader	Number Persons	Drop Off PT./Time	Pick Up PT./Time
E-224 WTS2 NORTHERN UTAH FIRE		08/27	STEVE SPRAYCAR	1	ICP/0600	ICP/1800
E-2 DOZ2 SILVER-NICKEL LOGGING LLC		08/19	TOBY EPPERSON	2	ICP/0600	ICP/1800
E-20 DOZ2 BLM		08/22	BLAINE JEWETT	1	ICP/0600	ICP/1800
E-112 UTV TOP GUN RESOURCES			-- UNSTAFFED --		ICP/0600	ICP/1800
E-113 UTV TOP GUN RESOURCES			-- UNSTAFFED --		ICP/0600	ICP/1800
O-43 REMS 9 SPOKANE COUNTY FD9		08/19	CLINT JUNTUNEN	4	ICP/0600	ICP/1800
<b>6. Control Operations/Work Assignments:</b>						
<p>TASK - Contain fire south of Camp Progress, east of Road 103 and south of Road 1016.          PURPOSE - Protect property and resources; limit further fire spread to the North and West.          END STATE - Fireline is established and secured and fire is contained East of Peter Flat and Dan Nason Basin.</p>						
<b>7. Special Instructions:</b>						
<ul style="list-style-type: none"> <li>Return all empty gas cans to supply!</li> <li>GPS all dozer line and get updates to SITL</li> </ul> <p>*=Resource identified for initial attack. Be prepared to respond to IA as requested thru communications and as availability allows.</p>						
<b>8. Division/Group Communication Summary</b>						
Function	Channel	RX Frequency N/W	RX Tone/NAC	TX Frequency N/W	TX Tone/NAC	Mode
TACTICAL	2	168.2000	146.2	168.2000	146.2	A
COMMAND	7	173.9250	146.2	169.8375	146.2	A
COMMAND	8	159.4275	192.8	151.2725	192.8	A
COMMAND	10	172.5375	146.2	163.5500	146.2	A
AIR TO GROUND	14	171.8625		171.8625		A
<b>9. Prepared By (Resource Unit Leader)</b>			<b>Approved By (Planning Section Chief)</b>		<b>Date</b>	<b>Time</b>
NATHAN JEFFRIES			HOWARD JOHNSON		08/13/2021	2000

**Division/Group Assignment List (ICS 204 WF)**  
**Controlled Unclassified Information//Basic**

<b>1. Incident Name:</b>			<b>3.</b>			
WHITMORE			<b>Branch:</b>		<b>Division/Group</b>	
<b>2. Operational Period: DAY / NIGHT</b>					L	
Date/Time From: 08/14/2021 0600 SAT		Date/Time To: 08/15/2021 0600 SUN				
<b>4. Operations Personnel</b>						
<b>OPERATIONS CHIEF</b>		MATT CASTLE; KURT RANTA (T) JEFF BOUSCHOR; JEROMY WILSON (T)		<b>DIVISION/GROUP SUPERVISOR</b>		BOB HINDS
<b>SAFETY OFFICER</b>		TROY CORN; JACK CATES DON WALLER (T)		<b>AIR ATTACK SUPERVISOR</b>		MIKE STOUT
<b>5. Resources Assigned this Period</b>						
Strike Team / Task Force / Resource Designator		LWD	Leader	Number Persons	Drop Off PT./Time	Pick Up PT./Time
O-1.63 SOF2		08/19	JOHN BARNES	1	ICP/0600	ICP/1800
O-109 TFLD		08/23	IZAAK MCHENRY	1	ICP/0600	ICP/1800
O-84 HEQB		08/21	REESE SEWELL	1	ICP/0600	ICP/1800
O-239 FMOD SWEDBERG MODULE 3		08/16	JEFALD WULFF	2	ICP/0600	ICP/1800
C-9 HC2I FLAGSTAFF IHC*		08/21	MARK ADAMS	22	ICP/0600	ICP/1800
C-2 HC2 PACIFIC COAST CONTRACTING		08/20	NORBERTO PANTELEON	20	ICP/0600	ICP/1800
C-13 HC2 OC FORESTRY INC		08/21	COLIN VALENNTAN	20	ICP/0600	ICP/1800
E-83 ENG6 TIMBERMANS TREE SERVICES		08/22	MARCUS ENICK	3	ICP/0600	ICP/1800
E-85 ENG6 OC FORESTRY		08/21	AARON ABEL	3	ICP/0600	ICP/1800
E-102 ENG3 ELEPHANT AHEAD VOL FD		08/18	CHRIS ANTAIS	4	ICP/0600	ICP/1800
E-103 ENG6 GE FORESTRY INC*		08/22	ALVARO GONZALEZ	3	ICP/0600	ICP/1800
E-174 ENG6 MARYLAND FS TYPE 6		08/21	SERGIO CASTILLO	4	ICP/0600	ICP/1800
E-209 ENG6 JNJ CONTR (MECHANICAL ISSUE- BACK 8/15)		08/26	TRAVIS GRUNENFELDER	3	ICP/0600	ICP/1800
E-76 WTS2 LEVI PICARD		08/21	LEVI PICARD/DENNY	3	ICP/0600	ICP/1800
E-78 WTS2 COWBOY FIRE LLC		08/21	GREGORY WITSMAN	1	ICP/0600	ICP/1800
E-79 WTS2 SUGDEN FIRE		08/22	THOMAS SUGDEN	1	ICP/0600	ICP/1800
<b>8. Division/Group Communication Summary</b>						
Function	Channel	RX Frequency N/W	RX Tone/NAC	TX Frequency N/W	TX Tone/NAC	Mode
TACTICAL	3	168.6000	146.2	168.6000	146.2	A
COMMAND	7	173.9250	146.2	169.8375	146.2	A
COMMAND	8	159.4275	192.8	151.2725	192.8	A
COMMAND	10	172.5375	146.2	163.5500	146.2	A
AIR TO GROUND	14	171.8625		171.8625		A
<b>9. Prepared By (Resource Unit Leader)</b>			<b>Approved By (Planning Section Chief)</b>		<b>Date</b>	<b>Time</b>
NATHAN JEFFRIES			HOWARD JOHNSON		08/13/2021	2000

**Division/Group Assignment List (ICS 204 WF)**  
**Controlled Unclassified Information//Basic**

<b>1. Incident Name:</b>				<b>3.</b>		
WHITMORE				<b>Branch:</b>	<b>Division/Group</b>  L	
<b>2. Operational Period: DAY / NIGHT</b>						
Date/Time From: 08/14/2021 0600 SAT		Date/Time To: 08/15/2021 0600 SUN				
<b>4. Operations Personnel</b>						
<b>OPERATIONS CHIEF</b>		MATT CASTLE; KURT RANTA (T) JEFF BOUSCHOR; JEROMY WILSON (T)		<b>DIVISION/GROUP SUPERVISOR</b>		BOB HINDS
<b>SAFETY OFFICER</b>		TROY CORN; JACK CATES DON WALLER (T)		<b>AIR ATTACK SUPERVISOR</b>		MIKE STOUT
<b>5. Resources Assigned this Period</b>						
Strike Team / Task Force / Resource Designator		LWD	Leader	Number Persons	Drop Off PT./Time	Pick Up PT./Time
E-186 WTS2 BOULDER CREEK		08/26	JOSH SMITH	1	ICP/0600	ICP/1800
E-198 DOZ2 IRON TRIANGLE		08/26	RALPH LAMBECH	2	ICP/0600	ICP/1800
E-175 UTV TOP GUN RESOURCES			-- UNSTAFFED --		ICP/0600	ICP/1800
E-67 AMBU 2 LINCOLN COUNTY (BLS)		08/21	CORREY KRAUS	2	ICP/0600	ICP/1800
E-5002 AMBU 3 MED TRANSPORT (ALS NON FIRELINE)		08/25	SHANNON STOSAK	1	ICP/0600	ICP/1800
O-62 EMPF MEDIC 1		08/20	JOHN LIPSKER	1	ICP/0600	ICP/1800
<b>6. Control Operations/Work Assignments:</b>						
<p>TASK - Contain and secure fire perimeter west of Coyote Creek Road and south of Rd 1016. Burn out as needed.  PURPOSE - Protect property and resources; limit further fire spread to the North.  END STATE - Fireline is established and secured and fire is contained south of Highway 155.</p>						
<b>7. Special Instructions:</b>						
<ul style="list-style-type: none"> <li>Return all empty gas cans to supply!</li> <li>GPS all dozer line and get updates to SITL</li> </ul> <p>*=Resource identified for initial attack. Be prepared to respond to IA as requested thru communications and as availability allows.</p>						
<b>8. Division/Group Communication Summary</b>						
Function	Channel	RX Frequency N/W	RX Tone/NAC	TX Frequency N/W	TX Tone/NAC	Mode
TACTICAL	3	168.6000	146.2	168.6000	146.2	A
COMMAND	7	173.9250	146.2	169.8375	146.2	A
COMMAND	8	159.4275	192.8	151.2725	192.8	A
COMMAND	10	172.5375	146.2	163.5500	146.2	A
AIR TO GROUND	14	171.8625		171.8625		A
<b>9. Prepared By (Resource Unit Leader)</b>			<b>Approved By (Planning Section Chief)</b>		<b>Date</b>	<b>Time</b>
NATHAN JEFFRIES			HOWARD JOHNSON		08/13/2021	2000

**Division/Group Assignment List (ICS 204 WF)**  
**Controlled Unclassified Information//Basic**

<b>1. Incident Name:</b>			<b>3.</b>			
WHITMORE			<b>Branch:</b>		<b>Division/Group</b>	
<b>2. Operational Period: DAY / NIGHT</b>					<b>NIGHT</b>	
Date/Time From: 08/14/2021 0600 SAT		Date/Time To: 08/15/2021 0600 SUN				
<b>4. Operations Personnel</b>						
<b>OPERATIONS CHIEF</b>		MATT CASTLE; KURT RANTA (T) JEFF BOUSCHOR; JEROMY WILSON (T)		<b>DIVISION/GROUP SUPERVISOR</b>		NICK SCHREINER
<b>SAFETY OFFICER</b>		TROY CORN; JACK CATES DON WALLER (T)		<b>AIR ATTACK SUPERVISOR</b>		MIKE STOUT
<b>5. Resources Assigned this Period</b>						
Strike Team / Task Force / Resource Designator		LWD	Leader	Number Persons	Drop Off PT./Time	Pick Up PT./Time
O-76 SOF2		08/19	RICHARD MCCONNELL	1	ICP/1800	ICP/0600
O-116 TFLD		08/25	ALEX NAGYGYOR	1	ICP/1800	ICP/0600
O-218 HEQB		08/25	TYLER TRAWEEK	1	ICP/1800	ICP/0600
C-15 HC1 FORT APACHE IHC		08/25	BRIAN QUINTERO	21	ICP/1800	ICP/0600
E-93 ENG6 ROCKY POINT WILDFIRE		08/22	KC FRY	3	ICP/1800	ICP/0600
E-104 ENG6 JC OROZCO		08/23	JAVIER OROZCO	3	ICP/1800	ICP/0600
E-105 ENG6 NW FIRE PROTECTION DIST		08/22	JAMES ESTLE	3	ICP/1800	ICP/0600
E-201 ENG6 PACIFIC OASIS		08/26	ETHAN CULP	3	ICP/1800	ICP/0600
E-221 WTS2 SUNDANCE 204 (R&R - BACK 8/15)		08/28	RODNEY FAY	1	ICP/1800	ICP/0600
E-169 DOZ4 BOULDER CREEK		08/24	TED HUNTER	2	ICP/1800	ICP/0600
O-176 EMT 1		08/16	REBECCA WELLMAN	1	ICP/1800	ICP/0600
<b>6. Control Operations/Work Assignments:</b>						
TASK - Patrol and secure firelines in Divisions C/L/F/M. Patrol and secure structures as needed. Reduce risk to property. PURPOSE - Prevent additional fire spread to the north towards Highway 155. Protect property and resources, Prevent further damage and loss to structures. END STATE - Fire is contained within existing line locations and no longer a threat to structures.						
<b>7. Special Instructions:</b>						
Be prepared to respond to IA as requested thru communications and as availability allows.						
<b>8. Division/Group Communication Summary</b>						
Function	Channel	RX Frequency N/W	RX Tone/NAC	TX Frequency N/W	TX Tone/NAC	Mode
TACTICAL	5	166.7750	146.2	166.7750	146.2	A
COMMAND	7	173.9250	146.2	169.8375	146.2	A
COMMAND	8	159.4275	192.8	151.2725	192.8	A
COMMAND	10	172.5375	146.2	163.5500	146.2	A
AIR TO GROUND	14	171.8625		171.8625		A
<b>9. Prepared By (Resource Unit Leader)</b>			<b>Approved By (Planning Section Chief)</b>		<b>Date</b>	<b>Time</b>
NATHAN JEFFRIES			HOWARD JOHNSON		08/13/2021	2000

# AIR OPERATIONS SUMMARY

PREPARED BY: Paul Balfour

PREPARED DATE/TIME: August 13, 2021 2000hrs

<b>INCIDENT NAME:</b>  <b>WHITMORE</b>	<b>2. OPERATIONAL PERIOD:</b> Date: 8/14/2021      Helibase Start Time: 0830 End Time: 2030      Sunrise: 0547 Sunset: 2013 (Times valid for Nespelem)
--	--

<b>3. REMARKS (Safety Notes, Hazards, Air Operations Special Equipment, etc.):</b> General Aviation, See & Avoid Bucket work, Retardant drops: ensure area is clear of ground personnel before dropping; watch for wires; be aware of potential for turbulence at ridge tops, saddles, canyons, etc <b>*** BE AWARE OF FATIGUE, TAKE LONGER BREAKS WHEN FLYING IN SMOKEY CONDITIONS.</b> <b>*** Report all TFR intrusions to Air Operations, Air Support or Helibase as soon as possible.</b>	<b>4. MEDEVAC A/C:</b> Contact Mt Tolman Fire Center 509-634-3100 N125CL Short Haul PSICC 425-783-6150	<b>5. TFR #1/3986</b> Up to and including 9500msl 124.225 (A5)
---	---	--

PERSONNEL	Phone	7. FREQUENCIES	AM	FM	8. FIXED-WING	# Avail / Type/ Make-Model / FAA N# / Base(s)
AOBD: Paul Balfour O-1.40	509-993-8739	AIR/AIR Primary (A5)	124.225		Fixed Wing/Buckets	DIVS order thru ATGS if up, or Whitmore Communications
ASGS: Tim Lyda O-1.41	206-473-8560	AIR/AIR Secondary (A16)	134.050			
HEBM:		AIR/GROUND Primary (A-17)		171.8625	ATGS Aircraft	AA Mike Stout O-47 Kodiak N420Q (A20)  LATs Order through Air Attack/AOBD Mt Tolman Dispatch
HEMG: Thomas Clay(A87)	208-630-4475	AIR/GROUND Secondary		156.0225 T-103.5		
HEMG: Randy Pyle (A34.4)	503-705-2734	Air Keller Flt Flw		Rx172.775 T-156.7 Tx166.325 T-123.0		
ATGS: Mike Stout O-47	208-304-4237				NOTES:	Whitmore Helibase: N48 08 75 Elevation 1769 W118 59 00
Mt Tolman:	509-634-3100	Air/Grnd 03 IA		166.6125		
Debbie Coudell	509-570-4133	A/G DNR IA		159.270 T-103.5		DECK: 163.100
Michelle	509-675-0675					email costs to timlyda22@gmail.com

## 9. HELICOPTERS

FAA N#	TY	MAKE/MODEL	BASE	START	AVAIL	REMARKS	FAA N#	TY	MAKE/MODEL	BASE	START	AVAIL	REMARKS
N47CU	1	Boeing CH47 (A87)	Omak	0800	0900	Thomas Clay Mgr	N448JS	1	Sikorsky S61	Electric City	0800	0900	Randy Pyle Mgr



# INCIDENT RADIO COMMUNICATIONS PLAN (ICS 205)

Controlled Unclassified Information//Basic

<b>1. Incident Name:</b>	<b>2. Date/Time Prepared:</b>	<b>3. Operational Period: DAY / NIGHT</b>	
WHITMORE	Date: 08/13/2021 Time: 1546	Date/Time From: 08/14/2021 0600 SAT	Date/Time To: 08/15/2021 0600 SUN

**4. Basic Radio Channel Use:**

Zone Group	Ch #	Function	Channel Name/Trunked Radio System Talkgroup	Assignment	RX Freq	RX Tone/NAC	TX Freq	TX Tone/NAC	Mode (A,D, or M)	Remarks
	1	TACTICAL	TAC 1	RESERVED	168.0500	146.2	168.0500	146.2	A	
	2	TACTICAL	TAC 2	DIV F	168.2000	146.2	168.2000	146.2	A	
	3	TACTICAL	TAC 3	DIV L	168.6000	146.2	168.6000	146.2	A	
	4	TACTICAL	TAC 4	DIV A / Z / W / P / M	166.7250	146.2	166.7250	146.2	A	
	5	TACTICAL	TAC 5	NIGHT	166.7750	146.2	166.7750	146.2	A	
	6	TACTICAL	TAC 6	DIV C	168.2500	146.2	168.2500	146.2	A	
	7	COMMAND	CMD 7	EAST OF FIRE	173.9250	146.2	169.8375	146.2	A	ARMSTRONG LO-LINKED TO CMD8 & CMD10
	8	COMMAND	CMD 8	NORTH OF FIRE	159.4275	192.8	151.2725	192.8	A	RIDGELINE N OF FIRE-LINKED TO CMD7 & CMD10
	9	COMMAND	CMD 9	ALL DIVS - BACKUP CMD	169.7250	88.5	164.2500	100.0	A	FIRE A-MOSES MTN
	10	COMMAND	CMD 10	ALL DIVS	172.5375	146.2	163.5500	146.2	A	NEW - WHITMORE MTN-LINKED TO CMD7 & CMD8
	11	TACTICAL	MOSES	IA	169.7125	136.5	164.1625	100.0	A	FIRE B - MOSES MTN - IA ONLY
	12	TACTICAL	C TAC	IA	166.9750	151.4	166.9750	151.4	A	IA ONLY
	13	AIR TO GROUND	ATG 03	IA	166.6125		166.6125		A	IA ONLY
	14	AIR TO GROUND	A/G PRI	PRIMARY	171.8625		171.8625		A	AIR TO GROUND PRIMARY
	15	AIR TO GROUND	A/G SEC	SECONDARY	156.0225	103.5	156.0225	103.5	A	LOW POWER ONLY-NO MOBILES
	16	AIR GUARD	AIRGUARD	AIRGUARD	168.6250		168.6250	110.9	A	EMERGENCY AIR ONLY

**5. Special Instructions:**

<b>6. Prepared By</b> (Communications Unit Leader)	Name: MISSY PARKER	Signature: <i>Missy Parker /S/</i>
ICS 205	IAP Page	Date/Time: 08/13/2021 1546

Controlled Unclassified Information//Basic

DRAFT

# DMOB LIST FOR SATURDAY 08/14/2021

## CREWS

C-7            0600            (HC1)            LA GRANDE IHC

## EQUIPMENT

E-1            0600            (DOZ2)            OWENS FREIGHT LINES  
E-96           0700            (DOZ4)            OWENS FREIGHT  
E-92           1000            (ENG6)            JD FORESTRY REGION 6 NWCC

## OVERHEAD

O-154           0600            (LEO1)            JOHNSON, NEIL  
O-135           0700            (HEQB)            PERKINS, JOSHUA C  
O-182           0700            (HEQB)            ROCHA, RICHARD  
O-180           0900            (DIVS)            HARVEY, BRANDYN  
O-236           1200            (DIVS)            HERNANDEZ, NIKIA L

### **\*\*\* DMOB INSTRUCTIONS FOR ALL RESOURCES \*\*\***

In the COVID-19 environment we are limiting direct contact whenever possible including the DMOB process. As such, much of the process will be completed via cell phone. Any in-person interaction will be outside and face coverings are required during this interaction. When turning in supplies, limit resource representation to one person if possible. Keeping your times up to date with finance will speed up the process.

### **\*\*\* DMOB STEPS FOR ALL RESOURCES \*\*\* (Must Be Done In Order)**

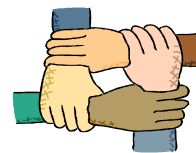
1. If you were inspected upon arrival or need a No Claims/No Comp receipt, check out with Ground Support located at Base Camp. **If this does not apply, proceed to Step 2.**
2. If you have any items checked out by Supply and Communications, proceed to those areas to turn in equipment. **If you don't have any items, proceed to Step 3**
3. Call Finance at 509-634-2013 to finalize paperwork.
4. Call DMOB at 509-634-2017 to complete the process.

If you follow this process, you will be made available in the ordering system faster for your next assignment. Any questions about the process please contact DMOB at 509-634-2017.

**Thank you and safe travels!**



# Human Resource Message



## Whitmore Fire - August 14, 2021 – 0600-0600

**Stress:** Everyone feels stressed from time to time, but what is stress? How does it affect your overall health? And what can you do to manage your stress?

Stress is how the brain and body respond to any demand. Any type of challenge—such as performance at work or school, a significant life change, or a traumatic event—can be stressful. Stress can affect your health. It is important to pay attention to how you deal with minor and major stressors, so you know when to seek help.

- **Everyone experiences stress:** from time to time. There are different types of stress—all of which carry physical and mental health risks.
- **Not all Stress is Bad:** In a dangerous situation, stress signals the body to prepare to face a threat or flee to safety.
- **Long Term Stress Can Harm your Health:** Because the source of long-term stress is more constant than acute stress, the body never receives a clear signal to return to normal functioning.
- **Ways to Manage Stress:** Be observant. Recognize the signs of your body's response to stress. Talk to your health care provider or a health professional. Check out this web site for more information: ([www.nimh.nih.gov/talkingtips](http://www.nimh.nih.gov/talkingtips)).
- **Get regular exercise:** Just 30 minutes per day of walking can help boost your mood and improve your health. Try a relaxing activity. Stay connected with people.
- **You should seek help right away:** if you have suicidal thoughts, are overwhelmed, feel you cannot cope, or are using drugs or alcohol more frequently because of stress. You can find resources to help you find a mental health provider by visiting [www.nimh.nih.gov/findhelp](http://www.nimh.nih.gov/findhelp).

A Wildland Firefighter Health and Safety Report indicated fatigued and stressed workers perform poorly, behave carelessly, tolerate greater errors, and become inattentive. They display decreased motivation, increased irritability and depression, and low morale. Accumulated fatigue is more persistent, producing a wider array of effects on performance, health, and morale than ordinary fatigue. Accumulated fatigue requires longer recovery periods than ordinary fatigue.



**You Matter and the  
Community Matter  
Have a safe and  
productive day!**



**Mailing Address:**  
**Your Name**  
**NW 12 Fire Camp**  
**Community Center**  
**4000 Columbia River Rd**  
**Nespelem, WA 99155**

**Contact: Susie Manezes, HRSP at 602-571-9327 or [smanezes@blm.gov](mailto:smanezes@blm.gov)**

## A Message from Public Information

**PHOTOS:** Your fireline photos help us build understanding with the public. Community members want to see what you see because you go where others can't safely go. We are looking for any pictures of the fireline and **fire resources working on the fireline in their PPE.**

You can send photos to:

Email: [2021.whitmore@firenet.gov](mailto:2021.whitmore@firenet.gov)

Facebook messenger: Central Washington Fire Information Page or  
<https://www.facebook.com/cwafireinfo>

As always, make sure you're wearing all your PPE and conveying a professional, caring, and respectful attitude toward the homes and land in this community.

Thanks for helping us out!

---

Lastly, it's our job to talk to the public, but we want you to know the public is talking to you too. On Facebook yesterday, everyone was excited to hear that mop-up was in progress across the fire:

*"Thank you for the updates - but also to those fighting this fire day and night..."*

*"Wonderful news! How can we thank you enough..."*

*"That's great news! Thank you!"*

# Logistics Message

## Whitmore Fire

### Supply Hours

Cache 0530 to 2200

Ordering 0600 to 2200

### Ground Support

0600 to 2200

### Kitchen Hours

Breakfast 0500 to 0900

Dinner 1700 to 2200

Lunch and Ice Refer 0500-0800, 1100-1300, 1700-1800

### Shower Trailer Hours

0500-1200

1200-1400 Closed for Cleaning

1400-2200



## Whitmore Fire Finance

FSC2 – Cheri Fuller, FSC2 (T) Christina Goebel

*Personnel Time – Carol Long or Frances Tobia*

*Equipment Time & VIPR – Mark Bohnet or Todd Powell*

Email : [2021.whitmore.finance@firenet.gov](mailto:2021.whitmore.finance@firenet.gov)

Phone: 509-634-2013

Hours of operation 0530 – 2200

*There is a box located outside of the ICP where CTRs and Shift Tickets can be left. Our ICPI Rob will be over at briefing area to turn in CTR/ST. If you have questions and need to talk to anyone in finance, please call the number above. You can also email us at the email.*

***End of pay period for Feds is 8/14 and DNR is 8/15 so if you are a draft OF-288 please provide an email on your CTR***

### ***Resources that need to contact finance***

C-7
-----

E-96
E-172
E-197

--

**Whitmore  
WA-COA-200106**

**Camp Map  
Nespelem Community Center**

08/14/2021 Day Shift



Camping Note:  
Please respect  
Tribal property  
and remain 6 feet  
away from all  
structures.

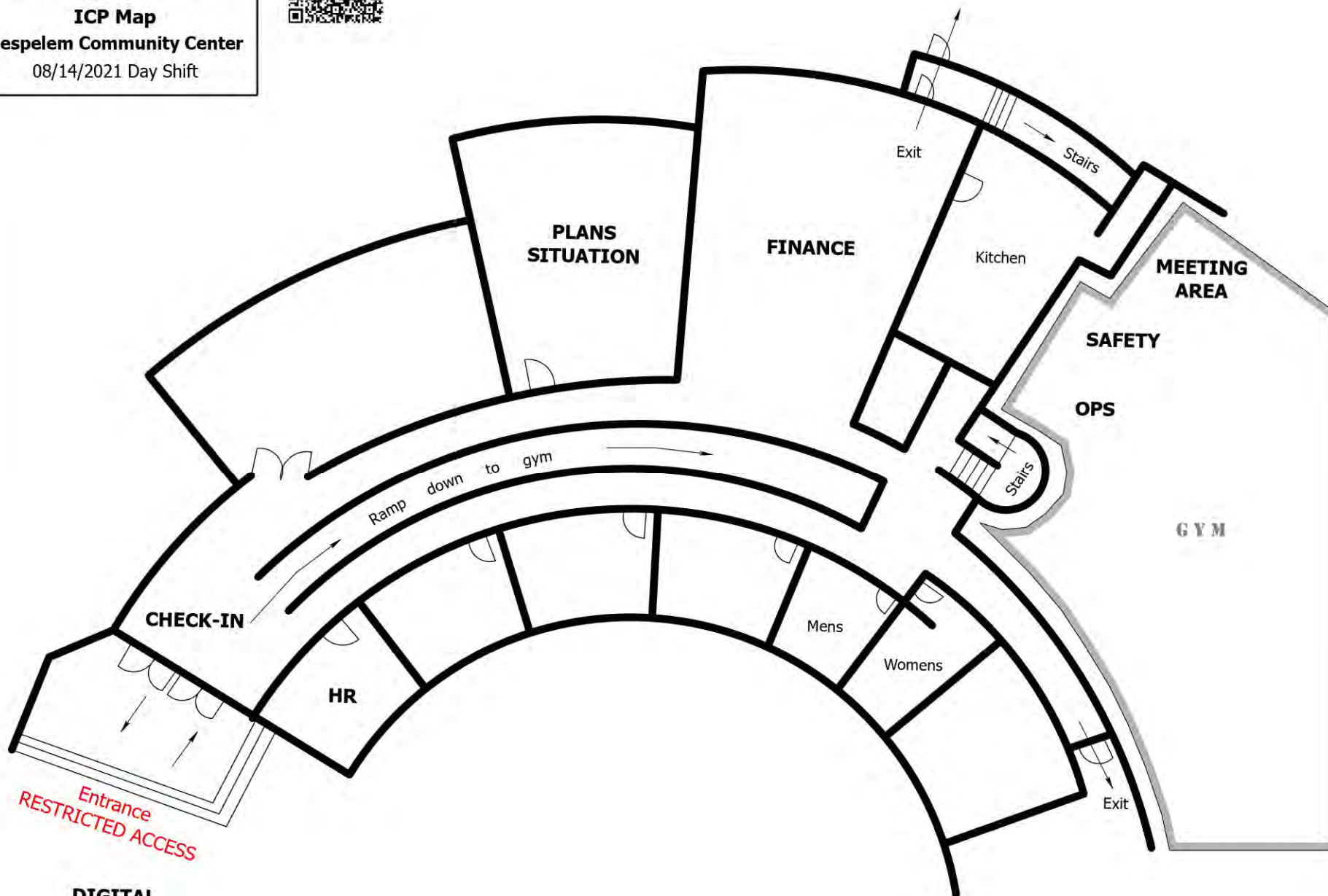


S. Bushnell  
07 20 21  
2027 Hours  
Maxar,

**Whitmore  
WA-COA-200106**



**ICP Map**  
**Nespelem Community Center**  
08/14/2021 Day Shift



**DIGITAL  
CHECK-IN**

S.Bushnell  
07 20 21  
2027 Hours



## Incident Maps

For incident maps scan the QR code on the cover of the IAP to open the 'Current Maps' folder.

### How to Download Maps in Avenza

If you're cell signal is poor you may need to connect to a wifi to download maps. However sometimes being connected to a wifi can slow map downloads. You'll just have to find out what works best.

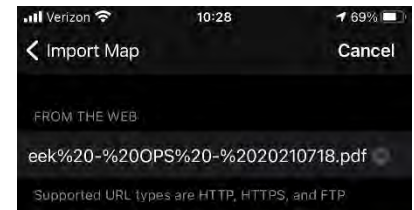
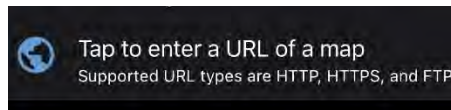
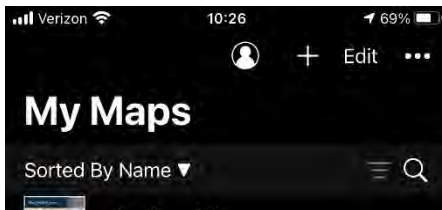
Method 1: From a browser - If you have a good cell or wifi signal

1. Tap on the desired map link and wait for the preview. *If it fails to load, use method 2 instead*
2. Tap the 'send to' icon (square with up arrow)
3. Choose the Avenza app



Method 2: From Avenza direct – if you don't have a good cell or wifi signal

1. Tap and hold on the desired map link, then choose 'copy' to copy the direct URL to the map
2. Launch the Avenza app
3. When not in any map... Tap the + (plus) icon at the top of the screen
4. Choose the load from URL option (last choice)
5. Paste the direct URL to the map
6. Tap 'Done' ; the map will begin downloading

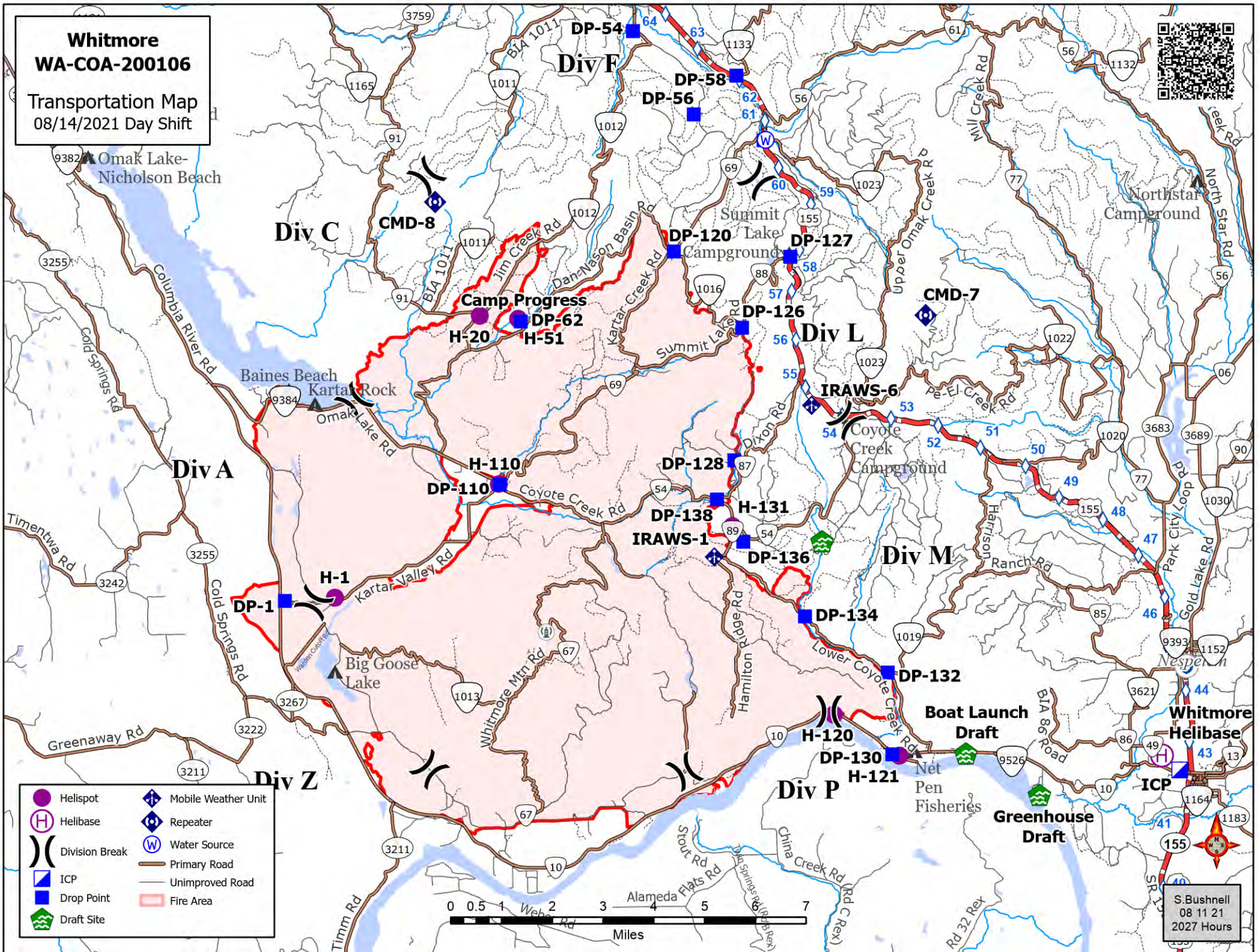


### How to Send Map Updates to the Situation Unit

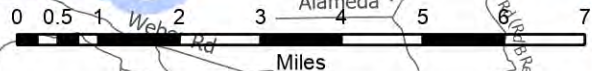
1. From within the map in Avenza, click the pin with three lines near the lower-right corner.
2. *iPhone:* In the lower right, click the square with up arrow. From the pop-up menu, choose Export to Others.  
*Android:* In the lower right, click the circle with three lines. Click the pop-up circle with up arrow.
3. Set these options:
  - a. Filename – leave alone
  - b. Export Format – choose SHP, GPX or KML
  - c. Data – all features
  - d. Image size – no image
4. Click the Export button in the upper-right corner.
5. When the export is ready, choose your Mail application.
6. Email the update to [2021.whitmore.situation@firenet.gov](mailto:2021.whitmore.situation@firenet.gov).
7. If you have questions, call or text the Situation Unit at 360-584-3373.
8. Your email needs to include an explanation of the data you are sending and a contact phone number.

**Whitmore  
WA-COA-200106**

Transportation Map  
08/14/2021 Day Shift



- Helispot
- Helibase
- Division Break
- ICP
- Drop Point
- Draft Site
- Mobile Weather Unit
- Repeater
- Water Source
- Primary Road
- Unimproved Road
- Fire Area



S. Bushnell  
08 11 21  
2027 Hours

## WHITMORE FIRE COVID-19 MITIGATIONS

**Supervisors are required to go over this list each morning with assigned resources- report any positive symptoms to medical unit.**

In the last 24 hours have you experienced:

- Cough more than expected?
- Shortness of breath or difficulty breathing?
- Fever? Chills?
- Muscle pain, outside your normal for firefighting?
- Sore throat?
- New loss of taste or smell?
- Fatigue, outside your normal for firefighting?
- Headache, outside your normal for firefighting?
- Congestion or runny nose, outside your normal for firefighting?
- Nausea or vomiting
- Diarrhea

*\* Take temperature with no-touch thermometer, if available \**



**Wear a mask in fire camp regardless of vaccination status, unless outdoors and able to maintain at least 6ft of distance at all times, alone in an enclosed space or actively engaged in firefighting on the fireline.**

**Use the Zoom link provided to join briefings remotely.**

**Observe 6ft Distancing whenever possible.**

**Observe “Module as One” practices – only close contact with crew (engine, handcrew, etc.) that you live and work with all summer. Observe distancing and masking around everyone else. Do not co-mingle with other crews or “modules” in camp or on the line.**

**Send crew representatives to pick up meals - masks must be worn in food lines.**

**No entry to ICP building except Incident Management Team members**

**Wash hands frequently and disinfect high-traffic areas on a regular basis.**

**Limit close contact between firefighters and the public to prevent exposure and spread.**





## EMERGENCY PLAN INCIDENT WITHIN AN INCIDENT

### ON SCENE INCIDENT COMMANDER

In the event of an accident or medical incident of any size, your primary responsibility is to ENSURE that the victim(s) receive prompt and effective Triage, Treatment, Extrication and Transport.

- **ENSURE THE MEDICAL INCIDENT REPORT IN THE INCIDENT ACTION PLAN IS BEING USED AND FOLLOWED- \*IF DETERMINED TO BE A GREEN, DO NOT DECLARE EMERGENCY TRAFFIC AND ONLY COMPLETE LINE 1-4 ON MIR\*.**
- Conduct size-up of the incident nature of accident, number type of resources involved, latitude and longitude location (DD°MMM.MM format): notify incident communications center and supervisor, request assistance as needed.
- Order and coordinate medical and support response to the accident.
- Evaluate special needs (law enforcement, haz mat, etc.).
- Clear the command frequency if medical emergency, coordinate with incident communications and air attack for air medical transportation needs.
- Preserve and photograph the scene for accident investigation.
- Remain aware of surroundings and the status of the main incident (delegate personnel to monitor the main fire) to ensure safety of medical treatment personnel.
- Until relieved, supervise and manage all personnel involved at the incident scene.

# MEDICAL PLAN (ICS 206 WF)

20 Incident/Project Name		1. Operational Period						
Whitmore Fire		Date/Time 8/14/2021 0600-1900						
2. Ambulance Services								
Name	Complete Address	Phone	Advanced Life Support (ALS) Yes No					
Colville Tribal EMS Nespelem, WA	410 10 <sup>th</sup> St. Nespelem, WA 99155	911 - Dispatch 509-634-2472 509-978-9323			x			
Lifeline Ambulance	912 Koala Ave Omak, WA 98841	911 - Dispatch 509-663-8091	x					
3. Air Ambulance Services								
Name	Phone	Type of Aircraft & Capability						
Airlift Northwest	800-426-2430 or 911	Rotor in Wenatchee						
Life Flight Network	800-232-0911	2 Rotors, 1 Fixed Wing, Spokane						
4. Hospitals								
Name Complete Address	GPS Datum – WGS 84 Coordinate Standard Degrees Decimal Minutes DD° MM.MMM' N - Lat DD° MM.MMM' W - Long		Travel Time From ICP Air Gnd		Phone	Helipad Yes No		Level of Care Facility
	Lat:		20 Min	40 Min				
Coulee Medical Center 411 Fortuyn Rd Grand Coulee, WA 99133	Long:	44°56.5186' N			509-633-1753	x		Level 4 Trauma
	VHF:	119°0.4333' W						
Mid-Valley Hospital 912 Koala Ave Omak, WA 98841	Lat:	48°23.8336' N	40 Min	1Hr 14 min	509-826-1760	x		Level 4 Trauma
	Long:	119°32.8758' W						
	VHF:							
Confluence Health Hospital (Central Washington Hospital) 1201 S Miller St. Wenatchee, WA 98801	Lat:	47°24.4340' N	1Hr 10 Min	2 Hr 30 Min	509-662-1511	x		Level 2 Trauma
	Long:	120°19.3664' W						
	VHF :							
Harborview Medical 325 9 <sup>th</sup> Ave Seattle, WA 98104	Lat:	47°36.1897' N	2 Hr	4 Hr	541-222-6929	x		Level 1 Trauma Burn Center
	Long:	122°19.4759' W	15 Min	30 Min				
	VHF:							
5. Division   Branch   Group		Capability	Personnel					
Div A/W/Z/P/M			Medic 3 Justin Smith O-36					
Div L		Ambo 2 (BLS) E-67	Ambo 3 (ALS Non Fireline) E-5002		Medic 1 Lipsker O-62			
Div C		Medic 2 Jennel Smith O-37	EMT 2 Lukowicz O-175		Ambo 1 (ALS) E-5			
Div F			REMS 9 O-43					
Night Shift			EMT 1 Wellman O-176					
6. Prepared By (Medical Unit Leader)		7. Date/Time	8. Reviewed By (Safety Officer)		9. Date/Time			
Eamonn Ryan, Diana Braun, Lee Venning (T)		08/13/2021 1800	<i>Don Waller /S/</i>		08/13/2021 1800			

# MEDICAL PLAN (ICS 206 WF)

Controlled Unclassified Information//Basic

## Medical Incident Report

**FOR A NON-EMERGENCY INCIDENT, WORK THROUGH CHAIN OF COMMAND TO REPORT AND TRANSPORT INJURED PERSONNEL AS NECESSARY.**

**FOR A MEDICAL EMERGENCY: IDENTIFY ON SCENE INCIDENT COMMANDER BY NAME AND POSITION AND ANNOUNCE "MEDICAL EMERGENCY" TO INITIATE RESPONSE FROM IMT COMMUNICATIONS/DISPATCH.**

Use the following items to communicate situation to communications/dispatch.

1. CONTACT COMMUNICATIONS / DISPATCH (**Verify correct frequency prior to starting report**)

*Ex: "Communications, Div. Alpha. Stand-by for Emergency Traffic."*

2. INCIDENT STATUS: *Provide incident summary (including number of patients) and command structure.*

*Ex: "Communications, I have a Red priority patient, unconscious, struck by a falling tree. Requesting air ambulance to Forest Road 1 at (Lat./Long.) This will be the Trout Meadow Medical, IC is TFLD Jones. EMT Smith is providing medical care."*

Severity of Emergency / Transport Priority	<input type="checkbox"/> RED / PRIORITY 1 Life or limb threatening injury or illness. Evacuation need is IMMEDIATE <i>Ex: Unconscious, difficulty breathing, bleeding severely, 2° – 3° burns more than 4 palm sizes, heat stroke, disoriented.</i> <input type="checkbox"/> YELLOW / PRIORITY 2 Serious Injury or illness. Evacuation may be DELAYED if necessary. <i>Ex: Significant trauma, unable to walk, 2° – 3° burns not more than 1-3 palm sizes.</i> <input type="checkbox"/> GREEN / PRIORITY 3 Minor Injury or illness. Non-Emergency transport <i>Ex: Sprains, strains, minor heat-related illness.</i>	
Nature of Injury or Illness & Mechanism of Injury		<i>Brief Summary of Injury or Illness (Ex: Unconscious, Struck by Falling Tree)</i>
Transport Request		<i>Air Ambulance / Short Haul/Hoist Ground Ambulance / Other</i>
Patient Location		<i>Descriptive Location &amp; Lat. / Long. (WGS84)</i>
Incident Name		<i>Geographic Name + "Medical" (Ex: Trout Meadow Medical)</i>
On-Scene Incident Commander		<i>Name of on-scene IC of Incident within an Incident (Ex: TFLD Jones)</i>
Patient Care		<i>Name of Care Provider (Ex: EMT Smith)</i>

3. INITIAL PATIENT ASSESSMENT: *Complete this section for each patient as applicable (start with the most severe patient)*

Patient Assessment: See IRPG page 106

Treatment:

4. TRANSPORT PLAN:

Evacuation Location (*if different*): (*Descriptive Location (drop point, intersection, etc.) or Lat. / Long.*) Patient's ETA to Evacuation Location:

Helispot / Extraction Site Size and Hazards:

5. ADDITIONAL RESOURCES / EQUIPMENT NEEDS:

*Example: Paramedic/EMT, Crews, Immobilization Devices, AED, Oxygen, Trauma Bag, IV/Fluid(s), Splints, Rope rescue, Wheeled litter, HAZMAT, Extrication*

6. COMMUNICATIONS: Identify State Air/Ground EMS Frequencies and Hospital Contacts as applicable

Function	Channel Name/Number	Receive (RX)	Tone/NAC *	Transmit (TX)	Tone/NAC *
COMMAND					
AIR-TO-GRND					
TACTICAL					

7. CONTINGENCY: **Considerations:** *If primary options fail, what actions can be implemented in conjunction with primary evacuation method? Be thinking ahead.*

8. ADDITIONAL INFORMATION: *Updates/Changes, etc.*

**REMEMBER:** Confirm ETA's of resources ordered. Act according to your level of training. Be Alert. Keep Calm. Think Clearly. Act Decisively.

Controlled Unclassified Information//Basic