

INCIDENT ACTION PLAN

Whitmore Fire

August 16, 2021

Day Operational Period 0600-1800



IAP



CHECK IN



MAPS



WA-COA-200106
PAN7SC[P] (1522)
221 KTO



Morning Briefing via Zoom

Phone: 1-669-254-5252

Meeting ID: 160 329 1397

Passcode: 252064



INCIDENT OBJECTIVES (ICS 202)

1. Incident Name:	2. Operational Period: DAY / NIGHT	
WHITMORE	Date/Time From: 08/16/2021 0600 MON	Date/Time To: 08/16/2021 1800 MON
3. Objective(s):		
<p>Implement risk management practices for the safety of firefighters, other responders and the public as the first priority.</p> <p>Minimize impacts to private property, critical infrastructure, timber, cultural and natural resources including water, fish, wildlife, and range land.</p> <p>Maintain and strengthen community relationships and provide timely fire information to the public and cooperators.</p> <p>Establish and maintain all current COVID-19 mitigation protocols according to CDC and agency guidelines.</p>		
4. Operational Period Command Emphasis:		
Continue to secure and mop-up control lines. Complete immediate suppression repair in critical areas and provide map updates for future suppression repair needs.		
General Situational Awareness:		
Monitor the weather conditions and base all actions on current and expected fire behavior.		
5. Site Safety Plan Required? Yes <input type="checkbox"/> No <input checked="" type="checkbox"/>		
Approved Site Safety Plan(s) Located		
6. Incident Action Plan (the items checked below are included in this Incident Action Plan):		
<input checked="" type="checkbox"/> ICS 202 <input type="checkbox"/> ICS 207 <input checked="" type="checkbox"/> ICS 203 <input type="checkbox"/> ICS 208 <input checked="" type="checkbox"/> ICS 204 <input checked="" type="checkbox"/> ICS 220 <input checked="" type="checkbox"/> ICS 205 <input checked="" type="checkbox"/> Map/Chart <input type="checkbox"/> ICS 205A <input checked="" type="checkbox"/> Weather Forecast/Tides/Currents <input checked="" type="checkbox"/> ICS 206	Other Attachments: <input checked="" type="checkbox"/> HR MESSAGE _____ <input type="checkbox"/> _____ <input type="checkbox"/> _____ <input type="checkbox"/> _____	
7. Prepared by: HOWARD JOHNSON Position/Title: PSC2	Signature: <i>Howard Johnson /S/</i>	
8. Approved by Incident Commander:	Name: BOBBY SHINDELAR	Signature: <i>Bobby Shindelar /S/</i>
ICS 202	IAP Page	Date/Time: 08/15/2021 2000

ORGANIZATION ASSIGNMENT LIST (ICS 203)

1. Incident Name:		2. Operational Period: DAY / NIGHT	
WHITMORE		Date/Time From: 08/16/2021 0600 MON	Date/Time To: 08/16/2021 1800 MON
3. Incident Commander(s) and Command Staff:		COMMUNICATIONS UNIT	MISSY PARKER
IC/UC	BOBBY SHINDELAR	MEDICAL UNIT	EAMONN RYAN; DIANA BRAUN LEE VENNING (T)
DEPUTY		FOOD UNIT	ALEXANDER LILLA
SAFETY OFFICER	TROY CORN JACK CATES; DON WALLER (T)		
INFORMATION OFFICER	MARY BEAN ROLAND EMETAZ		
LIAISON OFFICER	SCOTT CRAWFORD		
HUMAN RESOURCE SPECIALIST	SUSIE MANEZES		
HEALTH LIAISON	LIV STECKER	7. Operations Section:	
		OPS SECTION CHIEF	MATT CASTLE KURT RANTA (T)
		PLANNING OPS	JEFF BOUSCHOR JEROMY WILSON (T)
4. Agency/Organization Representative(s):			
Agency/Organization	Name		
COLVILLE AGENCY	PHIL WAPATO		
DNR	PAT RYAN	DIVISION/GROUP	A/Z/W/P/M MIKE JACKSON SAM STEINSHOUER (T)
		DIVISION/GROUP	C DAN OBERG
		DIVISION/GROUP	F LARRY LEACH JAMES DICKINSON (T)
5. Planning Section:		DIVISION/GROUP	L BOB HINDS
CHIEF	HOWARD JOHNSON JILL JOHNSON (T)		
RESOURCES UNIT	NATHAN JEFFRIES (VIRTUAL)		
SITUATION UNIT	DAVE WISCHER		
DOCUMENTATION UNIT			
DEMOBILIZATION UNIT	MIKE HESTON (VIRTUAL)	7b. Air Operations Branch:	
FIRE BEHAVIOR ANALYST	DON STRAND	AIR OPS BRANCH DIRECTOR	PAUL BALFOUR
GIS SPECIALIST	SHAWN BUSHNELL MIKE TONKEL (T)	AIR ATTACK SUPERVISOR	MIKE STOUT
TECHNOLOGY SUPPORT SPECIALIST	GEORGE JENKINS TODD MALLERY	AIR SUPPORT SUPERVISOR	
INCIDENT METEOROLOGIST	BOB TOBIN	AIR TANKER COORDINATOR	
		8. Finance/Administration Section:	
		CHIEF	CHERI FULLER CHRISTINA GOEBEL (T)
		TIME UNIT	CAROL LONG
6. Logistics Section:		COMPENSATION UNIT	CHERI FULLER
CHIEF	DAN SOPTICH	PROCUREMENT UNIT	MARK BOHNET
DEPUTY	KEVIN HAUGHTON	COST UNIT	KATHLEEN HIGH (VIRTUAL)
SUPPLY UNIT	JOHN KAUPA		
FACILITIES UNIT	KAREN ZIRKLE		
GROUND SUPPORT UNIT	DAVE HARSH		
9. Prepared By:	Name: JILL JOHNSON	Position/Title: PSC2 (T)	Signature: <i>Jill Johnson /SI</i>
ICS 203	IAP Page	Date/Time: 08/15/2021 2000	

Fire Weather Forecast

FORECAST NO: 12
PREDICTION FOR: Monday
SHIFT DATE: August 16, 2021 0600-1800
TIME AND DATE
FORECAST ISSUED: 8/15/2021 at 2000

INCIDENT: Whitmore Fire
UNIT: Colville Reservation
SIGNED: Bob Tobin
Incident Meteorologist (IMET)

Weather Discussion: The weather will become more unsettled behind the cold front. Temperatures will cool 10-12 degrees on Monday and winds will remain quite breezy. Northerly winds will increase down the Okanogan valley again Monday night with gusts around 25 mph or higher beginning after sunset and lasting through Tuesday evening. The low pressure system will settle over central Washington on Tuesday. Temperatures will cool another 10-12 degrees, putting afternoon highs below normal. Tuesday will also be the best chance for showers and a chance for an afternoon thunderstorm. It doesn't look like we will see a lot of rain, from a couple of hundredths to maybe a tenth. Temperatures will warm up a couple of degrees, but stay below seasonal normals.

WEATHER FORECAST:

Today:

SKY/WEATHER: Partly cloudy and not so Smokey. Cooler.
High Temperature...80-85 above 3000 feet and 85-90 below 3000 feet.
24hr Change...Down 8-10.
Min RH.....20-26% above 3000 feet and 18-23% below 3000 feet.
24hr Change...Up 8-12%.
20-FOOT WINDS: Southwest-west winds 12-15 mph with gusts around 20 mph.
CWR (>=0.10")....0% **LAL....**1 **Haines Index...2 (Very Low)** **Mixing Height...9000 ft AGL**

Tonight:

Weather: Mostly cloudy. Heavy smoke.
Low Temperature...55-60.
Max RH.....50-60%
20-FOOT WINDS: Northwest-North 12-16 mph with gusts around 25 mph after 2000.
CWR (>=0.10")....0% **LAL...1.**

Tuesday:

SKY/WEATHER: Variable clouds. A chance of showers and a slight chance of thunderstorms.
High Temperature...68-72 above 3000 feet and 73-78 below 3000 feet.
Min RH.....30-35% above 3000 feet...28-32% below 3000 feet
20-FOOT WINDS: Northwest 12-15 mph with gusts 20-30 mph.
CWR (>=0.10").... 0% **LAL....**1 **Haines Index...3 (Very Low)** **Mixing Height...9800 ft AGL**

Extended Outlook

Wednesday...Partly cloudy. Low: 48-52...High: 70-80. Min RH: 25-35% Winds: Southwest-west 8-12 mph.
Thursday...Partly cloudy. Low 53-58...High 74-84. Min RH: 25-35% Northwest 10-15 mph.

FIRE BEHAVIOR FORECAST

FORECAST NUMBER: 12

TYPE OF FIRE: Wildland

FIRE NAME: Whitmore

OPERATIONAL PERIOD: Aug 16, 2021 0600-2400

DATE ISSUED: Aug 15, 2021

TIME ISSUED: 2000

UNIT: WA-COA

Don Strand FBAN

INPUTS

WEATHER SUMMARY:

Partly cloudy, and cooler. Max temp near 90, Min RH 18%. Winds- Southwest-west 12 to 15 mph with gusts around 20 mph.... Haines 2

OUTPUTS

FIRE BEHAVIOR

GENERAL:

- Cooler temps, very dry fuels, and breezy conditions. ERCs' for Kramer yesterday are just above the 95th percentile. Fire behavior potential today will be very high. Continued potential for flare ups, watch for retardant covered areas and dirty burn areas close to the fire lines. Any spot fire that gets established in the timber litter fuels will be difficult to control. If a spot fire gets established in the lighter grass and sage brush fuels, potential for significant spread exists.
- Fuels consist mixed conifer and pine with grass and brush. Logging slash is in scattered locations. There are some areas of regeneration from past timber harvest and 5 to 10-year-old fire scar regen with grass and brush understory. Much of the lower elevations are covered with grass and sagebrush with timbered stringers in the deep draws.
- Most spotting will be short range and also from roll outs on steeper ground. Most spotting will be short range although with wind gusts, spotting near 0.3 mile possible.
- **Probability of Ignition will be near 80% unshaded and 50% shaded during the warmest part of the day.**

SPECIFIC:

DIV A/Z/W/P: Expect smoldering and limited creeping fire on the edge of green islands in the area north of Mount Whitmore lookout.

DIV C: Continue to watch for heat in areas of dirty burn and retardant covered fuels near fire lines. Potential for spots across lines.

DIV F: Areas of dirty burn and retardant covered fuels near fire lines will continue to clean up with potential to spot. Afternoon winds will be pushing drift smoke across road south of DP 120.

DIV L: Watch for flare ups with potential for spots in any areas of dirty burns adjacent to fire lines.

DIV M: Continue to monitor for heat near fire lines.

Initial Attack: In the event we respond to a new start, any new start in the area will have potential rapid rates of spread. Dry fuels with high Probability of Ignition, any start will likely spot.

AIR OPERATIONS: Watch for turbulence in the complex terrain.

SAFETY

- **Watch out where you walk. Stump holes burning very deep**
- **Berms along fire lines may still hold heat and could collapse when walked on.**
- **1000-hour fuel moistures are at 7% so live trees with damage trunks can catch fire and burn through becoming overhead hazards.**

Safety Message

16 August 2021

INCIDENT: Whitmore Fire

OPERATIONAL PERIOD: 0600-1800

TOPICS: COMMUNICATION and MEDICAL INCIDENTS



Inconsistent body language. Nonverbal communication should reinforce what is being said, not contradict it. If you say one thing, but your body language says something else, your listener will likely feel you're being dishonest. For example, you can't say "yes" while shaking your head no.



ICS206: MEDICAL RESOURCE SUMMARY

The IAP has a resource (**ICS206**) that shows medical resource information to include assigned medical personnel, medical equipment, helispots and transport times (air and ground). This is to be used with the **Medical Incident Report (MIR)** that can be found at the end of the IAP or IRPG. Practice how to use the 206 and MIR together!!!!

SAFETY OFFICER: Troy Corn, Jack Cates, Don Waller (T)

Deliberate Risk Assessment-Hazard Summary

16 August 2021

Hazard	Mitigation	Post Risk
Hazard Trees	Use avoidance to limit exposure time. Snag ahead to avoid exposure. Use qualified fallers, blasting, or alternate methods if needed. Conduct on-going risk analysis of all work areas. Follow Hazard Tree Safety Guidelines (IRPG page 22).	<u>High</u>
Initial Attack	Ensure identified IA resources are briefed of expectations and ensure communication plan is provided. Ensure resources are briefed on IA command structure. Provide identified crews with area maps.	Moderate
Physical Factors	Maintain hydration schedule. Closely monitor work rate and implement rest periods. Maintain nutrition. Ensure adequate work/rest.	Moderate
Extraction Time	Identify medivac sites and helispots. Initiate ground transport to accident site. Review IWI protocol to ensure familiarity.	<u>High</u>
Transportation	Signing of all incident roads that provide access to divisions. Practice defensive driving. In local communities obey the posted speed limits. Use reader boards to control entry as needed. Identify and evaluate contingency and alternate escape and travel routes.	<u>High</u>
Heavy Equipment	Post lookouts around equipment work areas. Establish communications with equipment boss and operator. Do not work down slope from equipment.	<u>High</u>
Transmission/Power Lines	Maintain one span radius from any downed line or compromised pole, be aware of smoke conductivity, report any downed lines or burning poles.	<u>High</u>
Aircraft	Utilize Air Attack. Ensure all resources are a safe distance from all bucket and retardant drops. Utilize air to ground primary radio channel.	High
Unburned Fuels/Firing Ops	Ensure management action points are implemented and followed. Weather updates as needed during burning operations. Locate indirect firelines to minimize the amount of unburned fuels. Ensure communications between all firing operations. Establish road security at all firing sites. Follow approved firing plan for unburned fuels.	Moderate
Steep Terrain/Gravity	Do not work crews above or below each other. Post lookouts for rolling material. Watch footing in loose soil, rock and around vegetation. Do not work below heavy equipment. Scout and identify travel routes.	Moderate
Environmental Factors	Assess for known allergies and report to medical personnel. Obtain Bee/wasp spray and yellow jacket traps. Maintain an awareness of livestock and rattlesnakes.	Moderate
Fire Behavior	Be aware of burn windows and weather impacts and min/max RH for flashy fuels/local conditions. Report changes to FBAN and IMET.	Moderate
Communication	Evaluate for dead zones prior to engagement. Utilize human repeaters as needed. Ensure accountability of resources in problem areas. Be prepared if local traffic maximizes air time.	Moderate
Viral Transmission Mitigations, Communicable Disease	Maintain isolated ICP (remote briefings, etc), maintain social distancing, and wear face coverings in accordance with CDC recommendations. Report and isolate if not feeling well.	Low
Public Interaction	Place new road closures as necessary and maintain current closures. Provide signage on all perimeter roads warning of closures and fire activity. Request tribal police presence on SR155 access roads, Omak Lake and Columbia River Road as needed. Maintain awareness of evacuation areas and provide accurate information dissemination.	Low

Division/Group Assignment List (ICS 204 WF)
Controlled Unclassified Information//Basic

1. Incident Name:				3.		
WHITMORE				Branch:	Division/Group A/Z/W/P/M	
2. Operational Period: DAY / NIGHT						
Date/Time From: 08/16/2021 0600 MON		Date/Time To: 08/16/2021 1800 MON				
4. Operations Personnel						
OPERATIONS CHIEF		MATT CASTLE; KURT RANTA (T) JEFF BOUSCHOR; JEROMY WILSON (T)		DIVISION/GROUP SUPERVISOR		MICHAEL JACKSON SAM STEINSHOUER* (T)
SAFETY OFFICER		TROY CORN; JACK CATES DON WALLER (T)		AIR ATTACK SUPERVISOR		MIKE STOUT
5. Resources Assigned this Period						
Strike Team / Task Force / Resource Designator		LWD	Leader	Number Persons	Drop Off PT./Time	Pick Up PT./Time
E-11 ENG6 CONNECTICUT INTERSTATE*		08/25	RICHARD SCALORA	4	ICP/0600	ICP/1800
E-192 ENG6 MID COLUMBIA RESOURCES*		08/17	DAVID JOHNSON	3	ICP/0600	ICP/1800
E-197 ENG6 CHAFEE CO. FPD V100		08/22	BRIAN WELCH	3	ICP/0600	ICP/1800
E-185 WTS2 1A CONSTRUCTION & FIRE		08/28	DUANE MCLAUGHLIN	1	ICP/0600	ICP/1800
O-36 EMPF MEDIC 3		08/21	JUSTIN SMITH	1	ICP/0600	ICP/1800
6. Control Operations/Work Assignments:						
TASK - Secure fire line within its existing footprint, mop up as necessary to prevent fire escape. PURPOSE - Protect property and natural resources, outside fire footprint. END STATE - Fire is contained. Structures and private property are no longer threatened.						
7. Special Instructions:						
Backhaul all unnecessary equipment and supplies. GPS all pump locations. Identified IA resources be prepared to respond to IA as requested thru communications and as availability allows						
* =Resource identified for initial attack.						
8. Division/Group Communication Summary						
Function	Channel	RX Frequency N/W	RX Tone/NAC	TX Frequency N/W	TX Tone/NAC	Mode
TACTICAL	4	166.7250	146.2	166.7250	146.2	A
COMMAND	7	173.9250	146.2	169.8375	146.2	A
COMMAND	8	159.4275	192.8	151.2725	192.8	A
COMMAND	10	172.5375	146.2	163.5500	146.2	A
AIR TO GROUND	14	171.8625		171.8625		A
9. Prepared By (Resource Unit Leader)			Approved By (Planning Section Chief)		Date	Time
NATHAN JEFFRIES			HOWARD JOHNSON		08/15/2021	2000

Division/Group Assignment List (ICS 204 WF)
Controlled Unclassified Information//Basic

1. Incident Name:				3.		
WHITMORE				Branch:	Division/Group C	
2. Operational Period: DAY / NIGHT						
Date/Time From: 08/16/2021 0600 MON		Date/Time To: 08/16/2021 1800 MON				
4. Operations Personnel						
OPERATIONS CHIEF		MATT CASTLE; KURT RANTA (T) JEFF BOUSCHOR; JEROMY WILSON (T)		DIVISION/GROUP SUPERVISOR		DANIEL OBERG
SAFETY OFFICER		TROY CORN; JACK CATES DON WALLER (T)		AIR ATTACK SUPERVISOR		MIKE STOUT
5. Resources Assigned this Period						
Strike Team / Task Force / Resource Designator	LWD	Leader	Number Persons	Drop Off PT./Time	Pick Up PT./Time	
O-174 SOF2	08/23	PAUL BRNA	1	ICP/0600	ICP/1800	
E-8.1 TFLD	08/22	LAFE SACKETT	1	ICP/0600	ICP/1800	
O-116 TFLD	08/25	ALEX NAGYGYOR	1	ICP/0600	ICP/1800	
O-218 HEQB	08/25	TYLER TRAWEEK	1	ICP/0600	ICP/1800	
O-185 FMOD SWEDBERG CONTRACTING	08/24	JAMES MCKIDDY	2	ICP/0600	ICP/1800	
C-3 HC2I MOCC INTERAGENCY CREW #4	08/21	TIMOTHY PERREN	20	ICP/0600	ICP/1800	
C-21 HC2 FRANCO REFORESTATION	08/26	ARTURO QUEVEDO	20	ICP/0600	ICP/1800	
E-7 ENG6 OREGON WOODS, INC.	08/19	BEN COOK	3	ICP/0600	ICP/1800	
E-133 ENG6 BIA AZ-NAA E-3661	08/25	TONY WILLIAMS	3	ICP/0600	ICP/1800	
E-179 ENG3 WILDFIRE SUPPORT TEAM	08/25	JOEY DEMARTINO	3	ICP/0600	ICP/1800	
E-205 ENG6 BIG STATE WILDFIRE	08/26	MATTHEW FINN	3	ICP/0600	ICP/1800	
E-18 WTS2 PORTABLE ROCK PRODUCTION	08/19	JIMMY POWELL	1	ICP/0600	ICP/1800	
E-225 WTS2 CUTTING EDGE CONTRACTOR	08/27	JEFF HALLOWS	1	ICP/0600	ICP/1800	
E-5001 WTS2 ELITE WATER WAGON	08/25	TYLER PEASLEY	1	ICP/0600	ICP/1800	
8. Division/Group Communication Summary						
Function	Channel	RX Frequency N/W	RX Tone/NAC	TX Frequency N/W	TX Tone/NAC	Mode
TACTICAL	6	168.2500	146.2	168.2500	146.2	A
COMMAND	7	173.9250	146.2	169.8375	146.2	A
COMMAND	8	159.4275	192.8	151.2725	192.8	A
COMMAND	10	172.5375	146.2	163.5500	146.2	A
AIR TO GROUND	14	171.8625		171.8625		A
9. Prepared By (Resource Unit Leader)			Approved By (Planning Section Chief)		Date	Time
NATHAN JEFFRIES			HOWARD JOHNSON		08/15/2021	2000

Division/Group Assignment List (ICS 204 WF)

Controlled Unclassified Information//Basic

1. Incident Name:			3.			
WHITMORE			Branch:		Division/Group	
2. Operational Period: DAY / NIGHT						
Date/Time From: 08/16/2021 0600 MON		Date/Time To: 08/16/2021 1800 MON		C		
4. Operations Personnel						
OPERATIONS CHIEF		MATT CASTLE; KURT RANTA (T) JEFF BOUSCHOR; JEROMY WILSON (T)		DIVISION/GROUP SUPERVISOR		DANIEL OBERG
SAFETY OFFICER		TROY CORN; JACK CATES DON WALLER (T)		AIR ATTACK SUPERVISOR		MIKE STOUT
5. Resources Assigned this Period						
Strike Team / Task Force / Resource Designator		LWD	Leader	Number Persons	Drop Off PT./Time	Pick Up PT./Time
E-5000 DOZ2 SCFD9*		08/20	MICHAEL WOLF	1	ICP/0600	ICP/1800
E-113 UTV TOP GUN RESOURCES			- UNSTAFFED -		ICP/0600	ICP/1800
E-5 AMBU 1 MED TRANSPORT (ALS)		08/21	JENNIFER BOSTWICK	2	ICP/0600	ICP/1800
O-37 EMPF MEDIC 2		08/21	JENNEL SMITH	1	ICP/0600	ICP/1800
O-175 EMT 2		08/18	KADY LUKOWICZ	1	ICP/0600	ICP/1800
6. Control Operations/Work Assignments:						
<p>TASK - Secure fire line within its existing footprint, mop up as necessary to prevent fire escape. PURPOSE - Protect property and natural resources, outside fire footprint. END STATE - Fire is contained. Structures and private property are no longer threatened.</p>						
7. Special Instructions:						
<p>Backhaul all unnecessary equipment and supplies. GPS all pump locations. Identified IA resources be prepared to respond to IA as requested thru communications and as availability allows.</p> <p>*=Resource identified for initial attack.</p>						
8. Division/Group Communication Summary						
Function	Channel	RX Frequency N/W	RX Tone/NAC	TX Frequency N/W	TX Tone/NAC	Mode
TACTICAL	6	168.2500	146.2	168.2500	146.2	A
COMMAND	7	173.9250	146.2	169.8375	146.2	A
COMMAND	8	159.4275	192.8	151.2725	192.8	A
COMMAND	10	172.5375	146.2	163.5500	146.2	A
AIR TO GROUND	14	171.8625		171.8625		A
9. Prepared By (Resource Unit Leader)			Approved By (Planning Section Chief)		Date	Time
NATHAN JEFFRIES			HOWARD JOHNSON		08/15/2021	2000

Division/Group Assignment List (ICS 204 WF)
Controlled Unclassified Information//Basic

1. Incident Name:			3.			
WHITMORE			Branch:		Division/Group	
2. Operational Period: DAY / NIGHT					F	
Date/Time From: 08/16/2021 0600 MON		Date/Time To: 08/16/2021 1800 MON				
4. Operations Personnel						
OPERATIONS CHIEF		MATT CASTLE; KURT RANTA (T) JEFF BOUSCHOR; JEROMY WILSON (T)		DIVISION/GROUP SUPERVISOR		LARRY LEACH JAMES DICKINSON (T)
SAFETY OFFICER		TROY CORN; JACK CATES DON WALLER (T)		AIR ATTACK SUPERVISOR		MIKE STOUT
5. Resources Assigned this Period						
Strike Team / Task Force / Resource Designator		LWD	Leader	Number Persons	Drop Off PT./Time	Pick Up PT./Time
O-1.61 SOF2		08/21	JOSHUA NORTHRUP	1	ICP/0600	ICP/1800
O-118 TFLD		08/22	TROY MAGUIRE	1	ICP/0600	ICP/1800
O-12 HEQB		08/21	TRAVIS BRUCH	1	ICP/0600	ICP/1800
O-186 FMOD TOP NOTCH		08/24	KYLE ARMIJO	2	ICP/0600	ICP/1800
C-1 HC2 GRIZZLY FIREFIGHTERS INC*		08/21	KARLA BEJAR	20	ICP/0600	ICP/1800
E-8 ENG6 NM-EMP NPS		08/22	ELI PINO	6	ICP/0600	ICP/1800
E-193 ENG6 THUNDERBOLT FIRE SERVICE		08/18	TOBY YAZZIE	3	ICP/0600	ICP/1800
E-200 ENG5 PACIFIC OASIS		08/26	CASEY DOWNES	3	ICP/0600	ICP/1800
E-203 ENG4 JD FORESTRY		08/26	LUIS LOPEZ	3	ICP/0600	ICP/1800
E-204 ENG6 ROGUE RIVER FIRE AND WATER		08/26	JASON FOSHEE	3	ICP/0600	ICP/1800
E-210 ENG6 BLAZE RUNNERS		08/27	JOHN VINCENT	3	ICP/0600	ICP/1800
E-17 WTS2 FYR FLY LTD #68		08/19	LINN LAMB	1	ICP/0600	ICP/1800
E-19 WTS2 BOMBEROS WATER LLC		08/19	KURT FIGG-HOBLYN	1	ICP/0600	ICP/1800
E-187 WTS2 OWENS		08/19	FRANKLIN OWENS	1	ICP/0600	ICP/1800
E-222 WTS2 WAYNE ONEY TENDER		08/27	WAYNE ONEY	1	ICP/0600	ICP/1800
E-223 WTS2 ALPINE TRANSPORT T24		08/26	CONRAD BURBANK	1	ICP/0600	ICP/1800
8. Division/Group Communication Summary						
Function	Channel	RX Frequency N/W	RX Tone/NAC	TX Frequency N/W	TX Tone/NAC	Mode
TACTICAL	2	168.2000	146.2	168.2000	146.2	A
COMMAND	7	173.9250	146.2	169.8375	146.2	A
COMMAND	8	159.4275	192.8	151.2725	192.8	A
COMMAND	10	172.5375	146.2	163.5500	146.2	A
AIR TO GROUND	14	171.8625		171.8625		A
9. Prepared By (Resource Unit Leader)			Approved By (Planning Section Chief)		Date	Time
NATHAN JEFFRIES			HOWARD JOHNSON		08/15/2021	2000

Division/Group Assignment List (ICS 204 WF)
Controlled Unclassified Information//Basic

1. Incident Name:			3.			
WHITMORE			Branch:		Division/Group	
2. Operational Period: DAY / NIGHT					F	
Date/Time From: 08/16/2021 0600 MON		Date/Time To: 08/16/2021 1800 MON				
4. Operations Personnel						
OPERATIONS CHIEF		MATT CASTLE; KURT RANTA (T) JEFF BOUSCHOR; JEROMY WILSON (T)		DIVISION/GROUP SUPERVISOR		LARRY LEACH JAMES DICKINSON (T)
SAFETY OFFICER		TROY CORN; JACK CATES DON WALLER (T)		AIR ATTACK SUPERVISOR		MIKE STOUT
5. Resources Assigned this Period						
Strike Team / Task Force / Resource Designator		LWD	Leader	Number Persons	Drop Off PT./Time	Pick Up PT./Time
E-224 WTS2 NORTHERN UTAH FIRE		08/27	STEVE SPRAYCAR	1	ICP/0600	ICP/1800
E-2 DOZ2 SILVER-NICKEL LOGGING LLC		08/19	TOBY EPPERSON	2	ICP/0600	ICP/1800
E-112 UTV TOP GUN RESOURCES			-- UNSTAFFED --		ICP/0600	ICP/1800
O-43 REMS 9 SPOKANE COUNTY FD9			CLINT JUNTUNEN	4	ICP/0600	ICP/1800
6. Control Operations/Work Assignments:						
TASK - Secure fire line within its existing footprint, mop up as necessary to prevent fire escape. PURPOSE - Protect property and natural resources, outside fire footprint. END STATE - Fire is contained. Structures and private property are no longer threatened.						
7. Special Instructions:						
Backhaul all unnecessary equipment and supplies. GPS all pump locations. Identified IA resources be prepared to respond to IA as requested thru communications and as availability allows.						
*=Resource identified for initial attack.						
8. Division/Group Communication Summary						
Function	Channel	RX Frequency N/W	RX Tone/NAC	TX Frequency N/W	TX Tone/NAC	Mode
TACTICAL	2	168.2000	146.2	168.2000	146.2	A
COMMAND	7	173.9250	146.2	169.8375	146.2	A
COMMAND	8	159.4275	192.8	151.2725	192.8	A
COMMAND	10	172.5375	146.2	163.5500	146.2	A
AIR TO GROUND	14	171.8625		171.8625		A
9. Prepared By (Resource Unit Leader)			Approved By (Planning Section Chief)		Date	Time
NATHAN JEFFRIES			HOWARD JOHNSON		08/15/2021	2000

Division/Group Assignment List (ICS 204 WF)
Controlled Unclassified Information//Basic

1. Incident Name:			3.			
WHITMORE			Branch:		Division/Group	
2. Operational Period: DAY / NIGHT					L	
Date/Time From: 08/16/2021 0600 MON		Date/Time To: 08/16/2021 1800 MON				
4. Operations Personnel						
OPERATIONS CHIEF		MATT CASTLE; KURT RANTA (T) JEFF BOUSCHOR; JEROMY WILSON (T)		DIVISION/GROUP SUPERVISOR		BOB HINDS
SAFETY OFFICER		TROY CORN; JACK CATES DON WALLER (T)		AIR ATTACK SUPERVISOR		MIKE STOUT
5. Resources Assigned this Period						
Strike Team / Task Force / Resource Designator		LWD	Leader	Number Persons	Drop Off PT./Time	Pick Up PT./Time
O-1.63 SOF2		08/19	JOHN BARNES	1	ICP/0600	ICP/1800
O-109 TFLD		08/23	IZAACK MCHENRY	1	ICP/0600	ICP/1800
O-84 HEQB		08/21	REESE SEWELL	1	ICP/0600	ICP/1800
C-2 HC2 PACIFIC COAST CONTRACTING		08/20	NORBERTO PANTELEON	20	ICP/0600	ICP/1800
C-13 HC2 OC FORESTRY INC		08/21	COLIN VALENTIN	20	ICP/0600	ICP/1800
E-83 ENG6 TIMBERMANS TREE SERVICES		08/22	MARCUS ENICK	2	ICP/0600	ICP/1800
E-85 ENG6 OC FORESTRY		08/21	AARON ABEL	3	ICP/0600	ICP/1800
E-102 ENG3 ELEPHANT HEAD VOL FD		08/18	CHRIS ANTAIS	4	ICP/0600	ICP/1800
E-103 ENG6 GE FORESTRY INC*		08/22	ALVARO GONZALEZ	3	ICP/0600	ICP/1800
E-174 ENG6 MARYLAND FS TYPE 6		08/21	SERGIO CASTILLO	4	ICP/0600	ICP/1800
E-209 ENG6 JNJ CONTR		08/26	TRAVIS GRUNENFELDER	3	ICP/0600	ICP/1800
E-76 WTS2 LEVI PICARD		08/21	LEVI PICARD/DENNY	3	ICP/0600	ICP/1800
E-78 WTS2 COWBOY FIRE LLC		08/21	GREGORY WITSMAN	1	ICP/0600	ICP/1800
E-79 WTS2 SUGDEN FIRE		08/22	THOMAS SUGDEN	1	ICP/0600	ICP/1800
E-186 WTS2 BOULDER CREEK		08/26	JOSH SMITH	1	ICP/0600	ICP/1800
8. Division/Group Communication Summary						
Function	Channel	RX Frequency N/W	RX Tone/NAC	TX Frequency N/W	TX Tone/NAC	Mode
TACTICAL	3	168.6000	146.2	168.6000	146.2	A
COMMAND	7	173.9250	146.2	169.8375	146.2	A
COMMAND	8	159.4275	192.8	151.2725	192.8	A
COMMAND	10	172.5375	146.2	163.5500	146.2	A
AIR TO GROUND	14	171.8625		171.8625		A
9. Prepared By (Resource Unit Leader)			Approved By (Planning Section Chief)		Date	Time
NATHAN JEFFRIES			HOWARD JOHNSON		08/15/2021	2000

Division/Group Assignment List (ICS 204 WF)
Controlled Unclassified Information//Basic

1. Incident Name:			3.			
WHITMORE			Branch:		Division/Group	
2. Operational Period: DAY / NIGHT					L	
Date/Time From: 08/16/2021 0600 MON		Date/Time To: 08/16/2021 1800 MON				
4. Operations Personnel						
OPERATIONS CHIEF		MATT CASTLE; KURT RANTA (T) JEFF BOUSCHOR; JEROMY WILSON (T)		DIVISION/GROUP SUPERVISOR		BOB HINDS
SAFETY OFFICER		TROY CORN; JACK CATES DON WALLER (T)		AIR ATTACK SUPERVISOR		MIKE STOUT
5. Resources Assigned this Period						
Strike Team / Task Force / Resource Designator		LWD	Leader	Number Persons	Drop Off PT./Time	Pick Up PT./Time
E-198 DOZ2 IRON TRIANGLE		08/26	RALPH LAMBECH	2	ICP/0600	ICP/1800
E-175 UTV TOP GUN RESOURCES			-- UNSTAFFED --		ICP/0600	ICP/1800
E-67 AMBU 2 LINCOLN COUNTY (BLS)		08/21	CORREY KRAUS	2	ICP/0600	ICP/1800
E-5002 AMBU 3 MED TRANSPORT (ALS NON FIRELINE)		08/25	SHANNON STOSAK	1	ICP/0600	ICP/1800
O-62 EMPF MEDIC 1		08/20	JOHN LIPSKER	1	ICP/0600	ICP/1800
6. Control Operations/Work Assignments:						
TASK - Secure fire line within its existing footprint, mop up as necessary to prevent fire escape. PURPOSE - Protect property and natural resources, outside fire footprint. END STATE - Fire is contained. Structures and private property are no longer threatened.						
7. Special Instructions:						
Backhaul all unnecessary equipment and supplies. GPS all pump locations. Identified IA resources be prepared to respond to IA as requested thru communications and as availability allows.						
*= Resource identified for initial attack.						
8. Division/Group Communication Summary						
Function	Channel	RX Frequency N/W	RX Tone/NAC	TX Frequency N/W	TX Tone/NAC	Mode
TACTICAL	3	168.6000	146.2	168.6000	146.2	A
COMMAND	7	173.9250	146.2	169.8375	146.2	A
COMMAND	8	159.4275	192.8	151.2725	192.8	A
COMMAND	10	172.5375	146.2	163.5500	146.2	A
AIR TO GROUND	14	171.8625		171.8625		A
9. Prepared By (Resource Unit Leader)			Approved By (Planning Section Chief)		Date	Time
NATHAN JEFFRIES			HOWARD JOHNSON		08/15/2021	2000

AIR OPERATIONS SUMMARY

PREPARED BY: Paul Balfour

PREPARED DATE/TIME: August 15, 2021 2000hrs

INCIDENT NAME: WHITMORE	2. OPERATIONAL PERIOD: Date: 8/16/2021 Helibase Start Time: 0830 End Time: 2030 Sunrise: 0552 Sunset: 2009 (Times valid for Nespelem)
--	--

3. REMARKS (Safety Notes, Hazards, Air Operations Special Equipment, etc.): General Aviation, See & Avoid Bucket work, Retardant drops: ensure area is clear of ground personnel before dropping; watch for wires; be aware of potential for turbulence at ridge tops, saddles, canyons, etc *** BE AWARE OF FATIGUE, TAKE LONGER BREAKS WHEN FLYING IN SMOKEY CONDITIONS. *** Report all TFR intrusions to Air Operations, Air Support or Helibase as soon as possible.	4. MEDEVAC A/C: Contact Mt Tolman Fire Center 509-634-3100 N125CL Short Haul PSICC 425-783-6150	5. TFR #1/3986 Up to and including 9500msl 124.225 (A5)
---	---	--

PERSONNEL	Phone	7. FREQUENCIES	AM	FM	8. FIXED-WING	# Avail / Type/ Make-Model / FAA N# / Base(s)
AOBD: Paul Balfour O-1.40	509-993-8739	AIR/AIR Primary (A5)	124.225		Fixed Wing/Buckets	DIVS order thru ATGS if up, or Whitmore Communications
ASGS:		AIR/AIR Secondary (A16)	134.050			
HEBM:		AIR/GROUND Primary (A-17)		171.8625	ATGS Aircraft	AA Mike Stout O-47 Kodiak N420Q (A20) LATs Order through Air Attack/AOBD Mt Tolman Dispatch
HEMG: Thomas Clay(A87)	208-630-4475	AIR/GROUND Secondary		156.0225 T-103.5		
HEMG: Randy Pyle (A34.4)	503-705-2734	Air Keller Flt Flw		Rx172.775 T-156.7		
ATGS: Mike Stout O-47	208-304-4237			Tx166.325 T-123.0	NOTES:	Whitmore Helibase: N48 08 75 Elevation 1769 W118 59 00
Mt Tolman:	509-634-3100	Air/Grnd 03 IA		166.6125		
Debbie Coudell	509-570-4133	A/G DNR IA		159.270 T-103.5		DECK: 163.100
Michelle	509-675-0675					email costs to timlyda22@gmail.com

9. HELICOPTERS

FAA N#	TY	MAKE/MODEL	BASE	START	AVAIL	REMARKS	FAA N#	TY	MAKE/MODEL	BASE	START	AVAIL	REMARKS
N47CU	1	Boeing CH47 (A87)	Omak	0800	0900	Thomas Clay Mgr	N448JS	1	Sikorsky S61	Electric City	0800	0900	Randy Pyle Mgr

INCIDENT RADIO COMMUNICATIONS PLAN (ICS 205)

Controlled Unclassified Information//Basic

1. Incident Name:	2. Date/Time Prepared:	3. Operational Period: DAY / NIGHT	
WHITMORE	Date: 08/15/2021 Time: 2000	Date/Time From: 08/16/2021 0600 MON	Date/Time To: 08/16/2021 1800 MON

4. Basic Radio Channel Use:

Zone Group	Ch #	Function	Channel Name/Trunked Radio System Talkgroup	Assignment	RX Freq	RX Tone/NAC	TX Freq	TX Tone/NAC	Mode (A,D, or M)	Remarks
	2	TACTICAL	TAC 2	DIV F	168.2000	146.2	168.2000	146.2	A	
	3	TACTICAL	TAC 3	DIV L	168.6000	146.2	168.6000	146.2	A	
	4	TACTICAL	TAC 4	DIV A / Z / W / P / M	166.7250	146.2	166.7250	146.2	A	
	6	TACTICAL	TAC 6	DIV C	168.2500	146.2	168.2500	146.2	A	
	7	COMMAND	CMD 7	EAST OF FIRE	173.9250	146.2	169.8375	146.2	A	ARMSTRONG LO-LINKED TO CMD8 & CMD10
	9	COMMAND	CMD 9	ALL DIVS - BACKUP CMD	169.7250	88.5	164.2500	100.0	A	FIRE A-MOSES MTN
	10	COMMAND	CMD 10	ALL DIVS	172.5375	146.2	163.5500	146.2	A	NEW - WHITMORE MTN-LINKED TO CMD7 & CMD8
	11	TACTICAL	MOSES	IA	169.7125	136.5	164.1625	100.0	A	FIRE B - MOSES MTN - IA ONLY
	12	TACTICAL	C TAC	IA	166.9750	151.4	166.9750	151.4	A	IA ONLY
	13	AIR TO GROUND	ATG 03	IA	166.6125		166.6125		A	IA ONLY
	14	AIR TO GROUND	A/G PRI	PRIMARY	171.8625		171.8625		A	AIR TO GROUND PRIMARY
	15	AIR TO GROUND	A/G SEC	SECONDARY	156.0225	103.5	156.0225	103.5	A	LOW POWER ONLY-NO MOBILES
	16	AIR GUARD	AIRGUARD	AIRGUARD	168.6250		168.6250	110.9	A	EMERGENCY AIR ONLY

5. Special Instructions:

6. Prepared By (Communications Unit Leader)	Name: MISSY PARKER	Signature: <i>Missy Parker</i>
ICS 205	IAP Page	Date/Time: 08/15/2021 2000

Controlled Unclassified Information//Basic

FINAL

WHITMORE FIRE DMOB LIST FOR Monday 08/16/2021

EQUIPMENT

E-93	0900	ENG6	R-4 ROCKY POINT WF
E-104	0900	ENG6	JR OROZCO
E-105	0915	ENG6	NW FIRE PROTECTION
E-169	0915	DOZ4	BOULDER CREEK
E-201	0915	ENG6	PACIFIC OASIS

OVERHEAD

O-239	0630	FMOD	SWEDBERG CONTR
O-76	0900	SOF2	MCCONNELL, RICHARD
O-176	0930	AEMF	WELLMAN, REBECCA

***** DMOB INSTRUCTIONS FOR ALL RESOURCES *****

In the COVID-19 environment we are limiting direct contact whenever possible including the DMOB process. As such, much of the process will be completed via cell phone. Any in-person interaction will be outside and face coverings are required during this interaction. When turning in supplies, limit resource representation to one person if possible. Keeping your times up to date with finance will speed up the process.

***** DMOB STEPS FOR ALL RESOURCES *** (Must Be Done In Order)**

1. If you were inspected upon arrival or need a No Claims/No Comp receipt, check out with Ground Support located at Base Camp. If this does not apply, proceed to Step 2.
2. If you have any items checked out by Supply and Communications, proceed to those areas to turn in equipment. If you don't have any items, proceed to Step 3
3. Call Finance at 509-634-2013 to finalize paperwork.
4. Call DMOB at 509-634-2017 to complete the process.

If you follow this process, you will be made available in the ordering system faster for your next assignment. Any questions about the process please contact DMOB at 509-634-2017.





Human Resource Message



Whitmore Fire - August 16, 2021 – 0600-1800

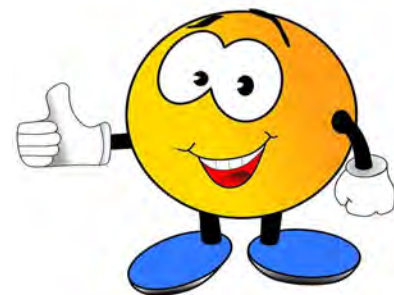
Happy Birthday: We want to recognize all the August birthdays and wish everyone who has a birthday in August a Happy Birthday! Congratulations, you have gained another year of experience. Yeah!

Be positive: We are half-way through the month of August, and we are getting ready to wrap up this fire. Take a moment to appreciate your hard work. Everyone working in support of this fire deserves a pat on the back for your willingness to show up each day and do what is necessary to support the firefighters on the line. For the firefighters and support personnel on the line, congratulations on a job well done. You too deserve a big pat on the back. Kudos to your hard work and determination in fighting this fire and your willingness to show up each day to complete this job.

Be Safe: There is still a lot of work to do before we hand this fire back to the local unit, so you need to stay diligent in paying attention to your safety and the safety of your co-workers. Do not get complacent! Look up, Look down, Look all around. Situational awareness = paying attention to your surroundings. When we say, “stay safe”, we mean it. You are the most important resource.

Be Patient: Be patient with each other and be patient with yourself. If you get stressed out, take a step back and breath. Really. Breathing is one of the simplest ways to destress. By practicing breathing exercises, you can train your body to react differently to stressors as you come across them. Every breath you take can raise your energy levels, relieve anxiety, and center you.

Quote for the Day: “Sometimes the most important thing in a whole day is the rest we take between two deep breaths.” – ETTY HILLESUM



Reminder: Collecting food through 19 August for the local community. Thank you!!!!

Contact: Susie Manezes, HRSP at 602-571-9327 or smanezes@blm.gov
Mailing address: NW 12 Fire Camp, Community Center, 4000 Columbia River Rd,
Nespelem, WA 99155

Logistics Message

Whitmore Fire

Supply Hours

Cache 0530 to 2200

Ordering 0600 to 2200

Ground Support

0600 to 2200

Kitchen Hours

Breakfast 0500 to 0900

Dinner 1700 to 2200

Lunch and Ice Refer 0500-0800, 1100-1300, 1700-1800

Shower Trailer Hours

0500-1200

1200-1400 Closed for Cleaning

1400-2200



Whitmore Fire Finance

FSC2 – Cheri Fuller, FSC2 (T) Christina Goebel

Personnel Time – Carol Long or Frances Tobia

Equipment Time & VIPR – Mark Bohnet or Todd Powell

Email : 2021.whitmore.finance@firenet.gov

Phone: 509-634-2013

Hours of operation 0530 – 2200

There is a box located outside of the ICP where CTRs and Shift Tickets can be left. Our ICPI Rob will be over at briefing area to turn in CTR/ST. If you have questions and need to talk to anyone in finance, please call the number above. You can also email us at the email.

Resources that need to contact finance

C-3 C-21

E-172 E-197 E-210

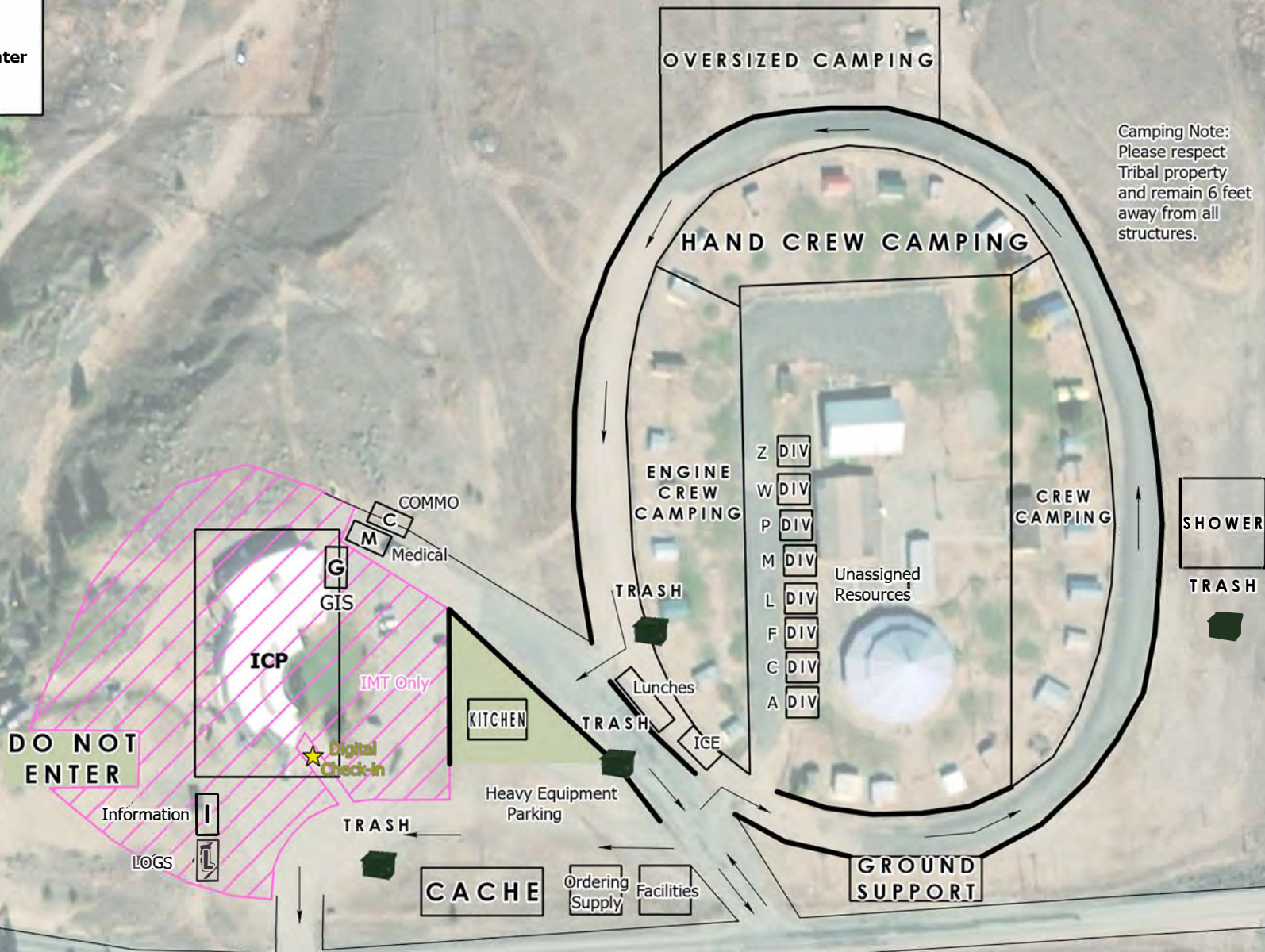
--

**Whitmore
WA-COA-200106**

**Camp Map
Nespelem Community Center**



Camping Note:
Please respect
Tribal property
and remain 6 feet
away from all
structures.

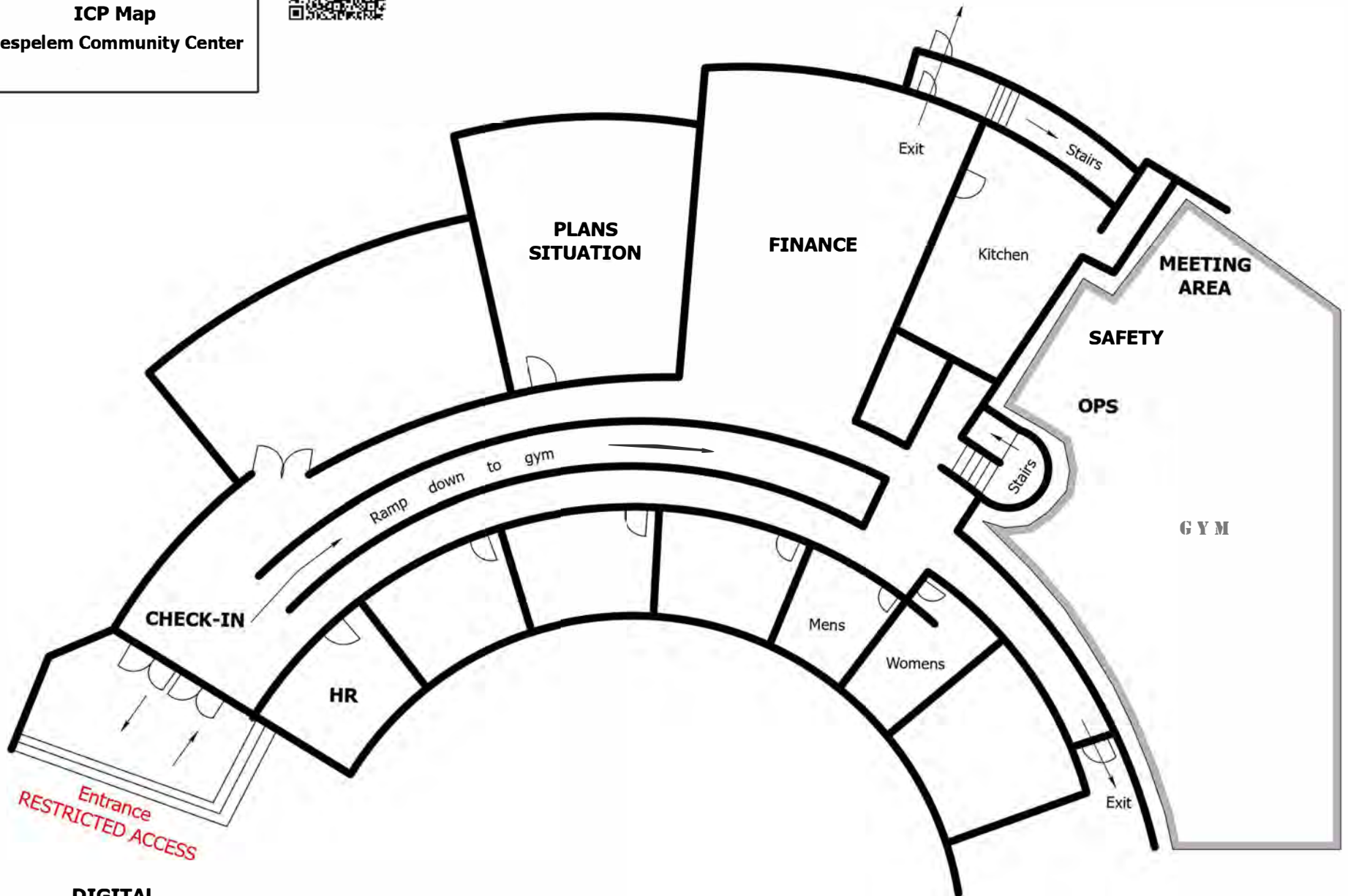


S. Bushnell
07 20 21
Maxar, 2027 Hours

**Whitmore
WA-COA-200106**



**ICP Map
Nespelem Community Center**



**DIGITAL
CHECK-IN**

S.Bushnell
07 20 21
2027 Hours

Incident Maps

For incident maps scan the QR code on the cover of the IAP to open the 'Current Maps' folder.

How to Download Maps in Avenza

If you're cell signal is poor you may need to connect to a wifi to download maps. However sometimes being connected to a wifi can slow map downloads. You'll just have to find out what works best.

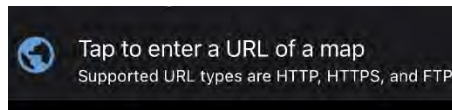
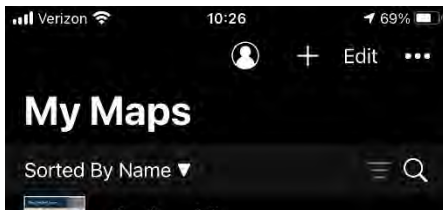
Method 1: From a browser - If you have a good cell or wifi signal

1. Tap on the desired map link and wait for the preview. *If it fails to load, use method 2 instead*
2. Tap the 'send to' icon (square with up arrow)
3. Choose the Avenza app



Method 2: From Avenza direct – if you don't have a good cell or wifi signal

1. Tap and hold on the desired map link, then choose 'copy' to copy the direct URL to the map
2. Launch the Avenza app
3. When not in any map... Tap the + (plus) icon at the top of the screen
4. Choose the load from URL option (last choice)
5. Paste the direct URL to the map
6. Tap 'Done' ; the map will begin downloading








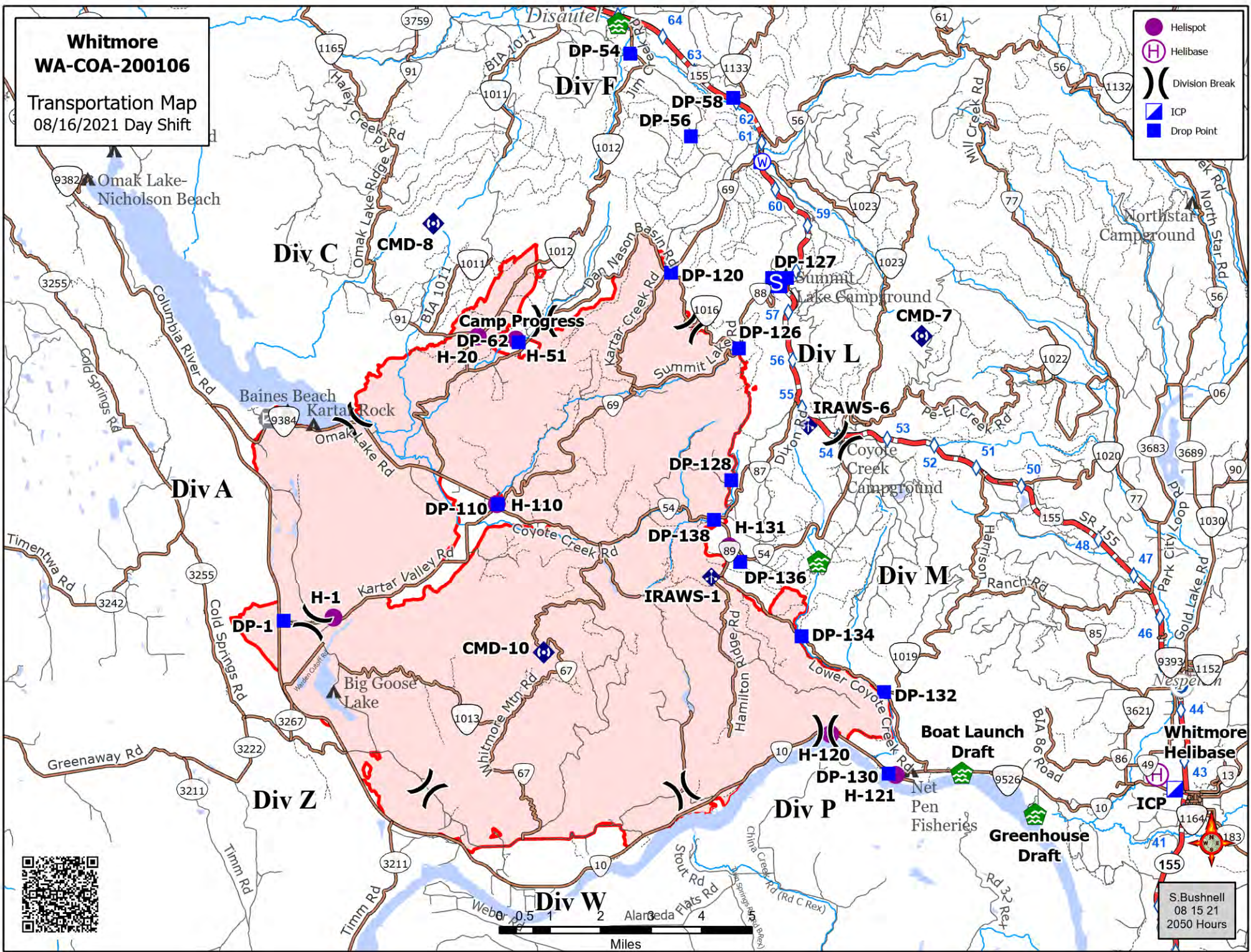
How to Send Map Updates to the Situation Unit

1. From within the map in Avenza, click the pin with three lines near the lower-right corner.
2. *iPhone:* In the lower right, click the square with up arrow. From the pop-up menu, choose Export to Others.
Android: In the lower right, click the circle with three lines. Click the pop-up circle with up arrow.
3. Set these options:
 - a. Filename – leave alone
 - b. Export Format – choose SHP, GPX or KML
 - c. Data – all features
 - d. Image size – no image
4. Click the Export button in the upper-right corner.
5. When the export is ready, choose your Mail application.
6. Email the update to 2021.whitmore.situation@firenet.gov.
7. If you have questions, call or text the Situation Unit at 360-584-3373.
8. Your email needs to include an explanation of the data you are sending and a contact phone number.

**Whitmore
WA-COA-200106**

Transportation Map
08/16/2021 Day Shift

-  Helispot
-  Helibase
-  Division Break
-  ICP
-  Drop Point



Whitmore Helibase
ICP
S. Bushnell
08 15 21
2050 Hours

WHITMORE FIRE COVID-19 MITIGATIONS

Supervisors are required to go over this list each morning with assigned resources- report any positive symptoms to medical unit.

In the last 24 hours have you experienced:

- Cough more than expected?
- Shortness of breath or difficulty breathing?
- Fever? Chills?
- Muscle pain, outside your normal for firefighting?
- Sore throat?
- New loss of taste or smell?
- Fatigue, outside your normal for firefighting?
- Headache, outside your normal for firefighting?
- Congestion or runny nose, outside your normal for firefighting?
- Nausea or vomiting
- Diarrhea

** Take temperature with no-touch thermometer, if available **



Wear a mask in fire camp regardless of vaccination status, unless outdoors and able to maintain at least 6ft of distance at all times, alone in an enclosed space or actively engaged in firefighting on the fireline.

Use the Zoom link provided to join briefings remotely.

Observe 6ft Distancing whenever possible.

Observe “Module as One” practices – only close contact with crew (engine, handcrew, etc.) that you live and work with all summer. Observe distancing and masking around everyone else. Do not co-mingle with other crews or “modules” in camp or on the line.

Send crew representatives to pick up meals - masks must be worn in food lines.

No entry to ICP building except Incident Management Team members

Wash hands frequently and disinfect high-traffic areas on a regular basis.

Limit close contact between firefighters and the public to prevent exposure and spread.

UNIT LOG		1. Incident Name	2. Date Prepared	3. Time Prepared
4. Unit Name/Designators		5. Unit Leader (Name and Position)	6. Operational Period	
7. Personnel Roster Assigned				
Name		ICS Position	Home Base	
8. Activity Log				
Time		Major Events		
9. Prepared by (Name and Position)				



EMERGENCY PLAN INCIDENT WITHIN AN INCIDENT

ON SCENE INCIDENT COMMANDER

In the event of an accident or medical incident of any size, your primary responsibility is to ENSURE that the victim(s) receive prompt and effective Triage, Treatment, Extrication and Transport.

- **ENSURE THE MEDICAL INCIDENT REPORT IN THE INCIDENT ACTION PLAN IS BEING USED AND FOLLOWED- *IF DETERMINED TO BE A GREEN, DO NOT DECLARE EMERGENCY TRAFFIC AND ONLY COMPLETE LINE 1-4 ON MIR*.**
- Conduct size-up of the incident nature of accident, number type of resources involved, latitude and longitude location (DD°MMM.MM format): notify incident communications center and supervisor, request assistance as needed.
- Order and coordinate medical and support response to the accident.
- Evaluate special needs (law enforcement, haz mat, etc.).
- Clear the command frequency if medical emergency, coordinate with incident communications and air attack for air medical transportation needs.
- Preserve and photograph the scene for accident investigation.
- Remain aware of surroundings and the status of the main incident (delegate personnel to monitor the main fire) to ensure safety of medical treatment personnel.
- Until relieved, supervise and manage all personnel involved at the incident scene.

MEDICAL PLAN (ICS 206 WF)

20 Incident/Project Name		1. Operational Period						
Whitmore Fire		Date/Time 8/16/2021 0600-1900						
2. Ambulance Services								
Name	Complete Address	Phone	Advanced Life Support (ALS)					
			Yes	No				
Colville Tribal EMS Nespelem, WA	410 10 th St. Nespelem, WA 99155	911 - Dispatch 509-634-2472 509-978-9323		x				
Lifeline Ambulance	912 Koala Ave Omak, WA 98841	911 - Dispatch 509-663-8091	x					
3. Air Ambulance Services								
Name	Phone	Type of Aircraft & Capability						
Airlift Northwest	800-426-2430 or 911	Rotor in Wenatchee						
Life Flight Network	800-232-0911	2 Rotors, 1 Fixed Wing, Spokane						
4. Hospitals								
Name Complete Address	GPS Datum – WGS 84 Coordinate Standard Degrees Decimal Minutes DD° MM.MMM' N - Lat DD° MM.MMM' W - Long		Travel Time From ICP		Phone	Helipad		Level of Care Facility
	Lat:	Long:	Air	Gnd		Yes	No	
Coulee Medical Center 411 Fortuyn Rd Grand Coulee, WA 99133	44°56.5186' N	119°0.4333' W	20 Min	40 Min	509-633-1753	x		Level 4 Trauma
	48°23.8336' N	119°32.8758' W	40 Min	1Hr 14 min	509-826-1760	x		Level 4 Trauma
	VHF:							
Mid-Valley Hospital 912 Koala Ave Omak, WA 98841	47°24.4340' N	120°19.3664' W	1Hr 10 Min	2 Hr 30 Min	509-662-1511	x		Level 2 Trauma
	47°36.1897' N	122°19.4759' W	2 Hr	4 Hr	541-222-6929	x		Level 1 Trauma Burn Center
	VHF:		15 Min	30 Min				
5. Division Branch Group	Capability	Personnel						
Div A/W/Z/P/M		Medic 3 Justin Smith O-36						
Div L	Ambo 2 (BLS) E-67	Ambo 3 (ALS Non Fireline) E-5002		Medic 1 Lipsker O-62				
Div C	Medic 2 Jennel Smith O-37	EMT 2 Lukowicz O-175		Ambo 1 (ALS) E-5				
Div F		REMS 9 O-43						
6. Prepared By (Medical Unit Leader)		7. Date/Time	8. Reviewed By (Safety Officer)		9. Date/Time			
Eamonn Ryan, Diana Braun, Lee Venning (T) <i>Eamonn Ryan</i>		08/15/2021 1800	<i>Don Waller /S/</i>		08/15/2021 1800			

MEDICAL PLAN (ICS 206 WF)

Controlled Unclassified Information//Basic

Medical Incident Report

FOR A NON-EMERGENCY INCIDENT, WORK THROUGH CHAIN OF COMMAND TO REPORT AND TRANSPORT INJURED PERSONNEL AS NECESSARY.

FOR A MEDICAL EMERGENCY: IDENTIFY ON SCENE INCIDENT COMMANDER BY NAME AND POSITION AND ANNOUNCE "MEDICAL EMERGENCY" TO INITIATE RESPONSE FROM IMT COMMUNICATIONS/DISPATCH.

Use the following items to communicate situation to communications/dispatch.

1. CONTACT COMMUNICATIONS / DISPATCH (Verify correct frequency prior to starting report)

Ex: "Communications, Div. Alpha. Stand-by for Emergency Traffic."

2. INCIDENT STATUS: Provide incident summary (including number of patients) and command structure.

Ex: "Communications, I have a Red priority patient, unconscious, struck by a falling tree. Requesting air ambulance to Forest Road 1 at (Lat./Long.) This will be the Trout Meadow Medical, IC is TFLD Jones. EMT Smith is providing medical care."

Severity of Emergency / Transport Priority	<input type="checkbox"/> RED / PRIORITY 1 Life or limb threatening injury or illness. Evacuation need is IMMEDIATE <i>Ex: Unconscious, difficulty breathing, bleeding severely, 2° – 3° burns more than 4 palm sizes, heat stroke, disoriented.</i> <input type="checkbox"/> YELLOW / PRIORITY 2 Serious Injury or illness. Evacuation may be DELAYED if necessary. <i>Ex: Significant trauma, unable to walk, 2° – 3° burns not more than 1-3 palm sizes.</i> <input type="checkbox"/> GREEN / PRIORITY 3 Minor Injury or illness. Non-Emergency transport <i>Ex: Sprains, strains, minor heat-related illness.</i>	
Nature of Injury or Illness & Mechanism of Injury		<i>Brief Summary of Injury or Illness (Ex: Unconscious, Struck by Falling Tree)</i>
Transport Request		<i>Air Ambulance / Short Haul/Hoist Ground Ambulance / Other</i>
Patient Location		<i>Descriptive Location & Lat. / Long. (WGS84)</i>
Incident Name		<i>Geographic Name + "Medical" (Ex: Trout Meadow Medical)</i>
On-Scene Incident Commander		<i>Name of on-scene IC of Incident within an Incident (Ex: TFLD Jones)</i>
Patient Care		<i>Name of Care Provider (Ex: EMT Smith)</i>

3. INITIAL PATIENT ASSESSMENT: Complete this section for each patient as applicable (start with the most severe patient)

Patient Assessment: See IRPG page 106

Treatment:

4. TRANSPORT PLAN:

Evacuation Location (if different): (Descriptive Location (drop point, intersection, etc.) or Lat. / Long.) Patient's ETA to Evacuation Location:

Helispot / Extraction Site Size and Hazards:

5. ADDITIONAL RESOURCES / EQUIPMENT NEEDS:

Example: Paramedic/EMT, Crews, Immobilization Devices, AED, Oxygen, Trauma Bag, IV/Fluid(s), Splints, Rope rescue, Wheeled litter, HAZMAT, Extrication

6. COMMUNICATIONS: Identify State Air/Ground EMS Frequencies and Hospital Contacts as applicable

Function	Channel Name/Number	Receive (RX)	Tone/NAC *	Transmit (TX)	Tone/NAC *
COMMAND					
AIR-TO-GRND					
TACTICAL					

7. CONTINGENCY: Considerations: If primary options fail, what actions can be implemented in conjunction with primary evacuation method? Be thinking ahead.

8. ADDITIONAL INFORMATION: Updates/Changes, etc.

REMEMBER: Confirm ETA's of resources ordered. Act according to your level of training. Be Alert. Keep Calm. Think Clearly. Act Decisively.

Controlled Unclassified Information//Basic