

INCIDENT ACTION PLAN

WHITMORE FIRE

August 19, 2021

Operational Period 0600-1800



Morning Briefing via Zoom

Phone: 1-669-254-5252

Meeting ID: 160 329 1397

Passcode: 252064

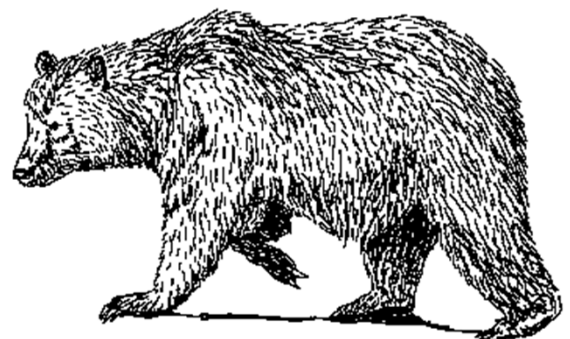
IAP



MAPS



WA-COA-200106
PAN7SC[P] (1522)
221 KTO



This page intentionally left blank.



INCIDENT OBJECTIVES (ICS 202)

1. Incident Name:	2. Operational Period: DAY	
WHITMORE	Date/Time From: 08/19/2021 0600 THU	Date/Time To: 08/19/2021 1800 THU
3. Objective(s):		
<p>Implement risk management practices for the safety of firefighters, other responders and the public as the first priority.</p> <p>Minimize impacts to private property, critical infrastructure, timber, cultural and natural resources including water, fish, wildlife, and range land.</p> <p>Maintain and strengthen community relationships and provide timely fire information to the public and cooperators.</p> <p>Establish and maintain all current COVID-19 mitigation protocols according to CDC and agency guidelines.</p>		
4. Operational Period Command Emphasis:		
Continue to secure and mop-up control lines. Complete immediate suppression repair in critical areas and provide map updates for future suppression repair needs.		
General Situational Awareness:		
Monitor the weather conditions and base all actions on current and expected fire behavior.		
5. Site Safety Plan Required? Yes <input type="checkbox"/> No <input checked="" type="checkbox"/>		
Approved Site Safety Plan(s) Located		
6. Incident Action Plan (the items checked below are included in this Incident Action Plan):		
<input checked="" type="checkbox"/> ICS 202 <input checked="" type="checkbox"/> ICS 203 <input checked="" type="checkbox"/> ICS 204 <input checked="" type="checkbox"/> ICS 205 <input type="checkbox"/> ICS 205A <input checked="" type="checkbox"/> ICS 206	<input type="checkbox"/> ICS 207 <input type="checkbox"/> ICS 208 <input checked="" type="checkbox"/> ICS 220 <input checked="" type="checkbox"/> Map/Chart <input checked="" type="checkbox"/> Weather Forecast/Tides/Currents	Other Attachments: <input checked="" type="checkbox"/> HR MESSAGE <input type="checkbox"/> _____ <input type="checkbox"/> _____ <input type="checkbox"/> _____
7. Prepared by: HOWARD JOHNSON Position/Title: PSC2	Signature: <i>Howard Johnson /S/</i>	
8. Approved by Incident Commander:	Name: BOBBY SHINDELAR	Signature: <i>Bobby Shindelar /S/</i>
ICS 202	IAP Page	Date/Time: 08/18/2021 2000

ORGANIZATION ASSIGNMENT LIST (ICS 203)

1. Incident Name:		2. Operational Period: DAY	
WHITMORE		Date/Time From: 08/19/2021 0600 THU	Date/Time To: 08/19/2021 1800 THU
3. Incident Commander(s) and Command Staff:		COMMUNICATIONS UNIT	MISSY PARKER
IC/UC	BOBBY SHINDELAR	MEDICAL UNIT	DIANA BRAUN
DEPUTY		FOOD UNIT	ALEXANDER LILLA
SAFETY OFFICER	TROY CORN JACK CATES; DON WALLER (T)		
INFORMATION OFFICER	MARY BEAN ROLAND EMETAZ		
LIAISON OFFICER	SCOTT CRAWFORD		
HUMAN RESOURCE SPECIALIST	SUSIE MANEZES	7. Operations Section:	
HEALTH LIAISON	LIV STECKER	OPS SECTION CHIEF	MATT CASTLE KURT RANTA (T)
		PLANNING OPS	JEFF BOUSCHOR
4. Agency/Organization Representative(s):			
Agency/Organization	Name		
COLVILLE AGENCY	PHIL WAPATO	DIVISION/GROUP	A/Z/W/P/M MIKE JACKSON
DNR	PAT RYAN	DIVISION/GROUP	C DAN OBERG
		DIVISION/GROUP	F DAN OBERG JAMES DICKINSON (T)
		DIVISION/GROUP	L BOB HINDS
5. Planning Section:			
CHIEF	HOWARD JOHNSON JILL JOHNSON (T)		
RESOURCES UNIT	NATHAN JEFFRIES (VIRTUAL)	7b. Air Operations Branch:	
SITUATION UNIT	DAVE WISCHER	AIR OPS BRANCH DIRECTOR	
DOCUMENTATION UNIT		AIR ATTACK SUPERVISOR	
DEMOBILIZATION UNIT	MIKE HESTON	AIR SUPPORT SUPERVISOR	
FIRE BEHAVIOR ANALYST	DON STRAND	AIR TANKER COORDINATOR	
GIS SPECIALIST	SHAWN BUSHNELL MIKE TONKEL (T)		
TECHNOLOGY SUPPORT SPECIALIST	GEORGE JENKINS TODD MALLERY	8. Finance/Administration Section:	
INCIDENT METEOROLOGIST	BOB TOBIN	CHIEF	CHERI FULLER CHRISTINA GOEBEL (T)
		TIME UNIT	CAROL LONG
		COMPENSATION UNIT	CHERI FULLER
		PROCUREMENT UNIT	MARK BOHNET
		COST UNIT	KATHLEEN HIGH (VIRTUAL)
6. Logistics Section:			
CHIEF	DAN SOPTICH		
DEPUTY	KEVIN HAUGHTON		
SUPPLY UNIT	JOHN KAUPA		
FACILITIES UNIT	KAREN ZIRKLE		
GROUND SUPPORT UNIT	DAVE HARSH		
9. Prepared By:	Name: JILL JOHNSON	Position/Title: PSC2 (T)	Signature:
ICS 203	IAP Page	Date/Time: 08/18/2021 2000	<i>Jill Johnson /SI</i>

Fire Weather Forecast

FORECAST NO: 15
PREDICTION FOR: Thursday
SHIFT DATE: August 19, 2021 0600-1800
TIME AND DATE
FORECAST ISSUED: 8/18/2021 at 2000

INCIDENT: Whitmore Fire
UNIT: Colville Reservation
SIGNED: Bob Tobin
Incident Meteorologist (IMET)

Weather Discussion: High clouds will begin to move into the region today ahead of the next upstream weather system. Temperatures will be a few degrees warmer and likely the warmest of the week. By Friday afternoon the chance of showers and thunderstorms will be on the increase. Showers and potential thunderstorms will linger through the night and into Saturday. This storm system looks like it will have a bit more moisture than the previous ones and we may actually see a wetting rain. Otherwise, temperatures will be cooler and winds will be variable and gusty. The weather will warm out and dry out next week with temperatures at or just below normal.

WEATHER FORECAST:

Today:

SKY/WEATHER: Mostly sunny.
High Temperature...78-82 above 3000 feet and 80-85 below 3000 feet.
24hr Change...Up 3-4 degrees
Min RH.....22-28% above 3000 feet and 20-25% below 3000 feet.
24hr Change...Down 8-10 percent.
20-FOOT WINDS: North winds 8-10 mph with gusts to 15 mph.
CWR (>=0.10")....0% **LAL....**1 **Haines Index...2 (Very Low)** **Mixing Height...9000 ft AGL**

Tonight:

Weather: Increasing clouds.
Low Temp...58-62.
Max RH.....40-50%
20-FOOT WINDS: North 5-10 mph...Becoming drainage 3-5 mph after midnight.
CWR (>=0.10")....0% **LAL...1.**

Friday:

SKY/WEATHER: Becoming mostly cloudy. A chance for showers and thunderstorms late in the afternoon. A better chance for showers Friday night.
High Temperature...73-78 above 3000 feet and 75-80 below 3000 feet.
Min RH.....35-45% above 3000 feet...30-40% below 3000 feet
20-FOOT WINDS: Variable wind 8-12 mph with gusts to 15 mph.
CWR (>=0.10").... 60% **LAL....2** **Haines Index...2 (Very Low)** **Mixing Height...8600 ft AGL**

Extended Outlook

Saturday...A chance of showers and thunderstorms. Low 55-60...High 68-78. Min RH: 35-45% Southwest 8-10 mph with gusts to 15 mph. CWR...70% LAL...2.
Sunday...Partly cloudy. Low: 55-60...High: 65-75. Min RH: 30-40% Winds: Southwest 10-12 mph. CWR...0% LAL...1.

FIRE BEHAVIOR FORECAST

FORECAST NUMBER: 15	TYPE OF FIRE: Wildland
FIRE NAME: Whitmore	OPERATIONAL PERIOD: Aug 19, 2021 0600-2400
DATE ISSUED: Aug 18, 2021	TIME ISSUED: 2000
UNIT: WA-COA	Don Strand FBAN

INPUTS

WEATHER SUMMARY:
Mostly sunny. Max temp near 85, Min RH 20%. Winds- North 8 to 10 mph with gusts to 15 mph.....Haines 2 (Very Low)....

OUTPUTS

FIRE BEHAVIOR

GENERAL:

- Suppression efforts have been very successful but continued slight potential for isolated areas of smoldering heat near fire lines that could flare up with slight potential to spot across lines.
- Fuels consist mixed conifer and pine with grass and brush. Logging slash is in scattered locations. There are some areas of regeneration from past timber harvest and 5 to 10-year-old fire scar regen with grass and brush understory. Much of the lower elevations are covered with grass and sagebrush with timbered stringers in the deep draws.
- If any spotting occurs, it will be short range.
- **Probability of Ignition will be near 80% unshaded and 40% shaded during the warmest part of the day.** ERCs' for Kramer yesterday are just above average.

SPECIFIC:

DIV M/A/Z/W/P: Expect smoldering and limited creeping fire on the edge of green islands in the area north of Mount Whitmore lookout.

DIV C: Isolated smoldering and creeping fire behavior.

DIV F: Isolated smoldering and creeping fire behavior.

DIV L: Isolated smoldering and creeping fire behavior.

Initial Attack: In the event we respond to a new start, any new start in the area, potential for rapid rates of spread in light fuels.

AIR OPERATIONS: Watch for turbulence in the complex terrain.

SAFETY

```

T H G I E H G N I X I M S F O Q X F A Y
Q C Y K C A T T A L A I T I N I Z L V T
D U O L C E V A W A G N R C A I T M S I
G B S N V K C V L N L T A Q E O B G L D
D I U R N A L W I N D S T K C P J V E I
S B J T P E N R I F J G A U E N S Z U M
G U C J R V U J N S V F M Q A I Q A F U
C Y P A Y C L T G T Y U W C U K R G E H
A U W P T I M B E R L I T T E R B R L C
S S M O R Z W T S U C C O L F O I I B X
Q T P U Y E B U S N D W C P A B C D A S
B J A A L I S I E H S U W Z W N R D L R
S J W B D U M S E E R Q N U Z K N I I K
Z M M S I I S G I Y N U N P W T V N A Y
A K H Q N L O C K O Q T B K K E T G V Z
S C M H Z H I D R P N Z P L D C P Q A V
P R E C I P I T A T I O N T A D U G M B
I U P L B Y H K Y Z K F S J Y Y A H D H
T E M P E R A T U R E U Q O K D E Z D S
R G P A H C O E U N D S A Q H P I R G F
    
```

Find the Weather and Fire terms in the word puzzle.

altocumulus aspect availablefuels
cumulus curing diurnalwinds
dustdevils floccus gridding humidity
initialattack mixingheight precipitation
raws shrublayer stability strata
suppression temperature timberlitter
wavecloud

Safety Message

19 August 2021

INCIDENT: Whitmore Fire

OPERATIONAL PERIOD: 0600-1800

TOPICS: Thank you

THANK YOU!

Take care of yourself, this will be a long fire season. Stay rested, hydrated, and think about nutrition, family and “back home.” So you can stay focused on your next assignment. Travel Safely and Smartly!

SAFETY OFFICER: Troy Corn, Jack Cates, Don Waller (T)

Deliberate Risk Assessment-Hazard Summary

19 August 2021

Hazard	Mitigation	Post Risk
Hazard Trees	Use avoidance to limit exposure time. Snag ahead to avoid exposure. Use qualified fallers, blasting, or alternate methods if needed. Conduct on-going risk analysis of all work areas. Follow Hazard Tree Safety Guidelines (IRPG page 22).	<u>High</u>
Initial Attack	Ensure identified IA resources are briefed of expectations and ensure communication plan is provided. Ensure resources are briefed on IA command structure. Provide identified crews with area maps.	Moderate
Physical Factors	Maintain hydration schedule. Closely monitor work rate and implement rest periods. Maintain nutrition. Ensure adequate work/rest.	Moderate
Extraction Time	Identify medivac sites and helispots. Initiate ground transport to accident site. Review IWI protocol to ensure familiarity.	<u>High</u>
Transportation	Signing of all incident roads that provide access to divisions. Practice defensive driving. In local communities obey the posted speed limits. Use reader boards to control entry as needed. Identify and evaluate contingency and alternate escape and travel routes.	<u>High</u>
Heavy Equipment	Post lookouts around equipment work areas. Establish communications with equipment boss and operator. Do not work down slope from equipment.	<u>High</u>
Transmission/Power Lines	Maintain one span radius from any downed line or compromised pole, be aware of smoke conductivity, report any downed lines or burning poles.	<u>High</u>
Aircraft	Utilize Air Attack. Ensure all resources are a safe distance from all bucket and retardant drops. Utilize air to ground primary radio channel.	High
Unburned Fuels/Firing Ops	Ensure management action points are implemented and followed. Weather updates as needed during burning operations. Locate indirect firelines to minimize the amount of unburned fuels. Ensure communications between all firing operations. Establish road security at all firing sites. Follow approved firing plan for unburned fuels.	Moderate
Steep Terrain/Gravity	Do not work crews above or below each other. Post lookouts for rolling material. Watch footing in loose soil, rock and around vegetation. Do not work below heavy equipment. Scout and identify travel routes.	Moderate
Environmental Factors	Assess for known allergies and report to medical personnel. Obtain Bee/wasp spray and yellow jacket traps. Maintain an awareness of livestock and rattlesnakes.	Moderate
Fire Behavior	Be aware of burn windows and weather impacts and min/max RH for flashy fuels/local conditions. Report changes to FBAN and IMET.	Moderate
Communication	Evaluate for dead zones prior to engagement. Utilize human repeaters as needed. Ensure accountability of resources in problem areas. Be prepared if local traffic maximizes air time.	Moderate
Viral Transmission Mitigations, Communicable Disease	Maintain isolated ICP (remote briefings, etc), maintain social distancing, and wear face coverings in accordance with CDC recommendations. Report and isolate if not feeling well.	Low
Public Interaction	Place new road closures as necessary and maintain current closures. Provide signage on all perimeter roads warning of closures and fire activity. Request tribal police presence on SR155 access roads, Omak Lake and Columbia River Road as needed. Maintain awareness of evacuation areas and provide accurate information dissemination.	Low

Division/Group Assignment List (ICS 204 WF)
Controlled Unclassified Information//Basic

1. Incident Name:			3.			
WHITMORE			Branch:		Division/Group	
2. Operational Period: DAY			A/Z/W/P/M			
Date/Time From: 08/19/2021 0600 THU	Date/Time To: 08/19/2021 1800 THU					
4. Operations Personnel						
OPERATIONS CHIEF		MATT CASTLE; KURT RANTA (T) JEFF BOUSCHOR		DIVISION/GROUP SUPERVISOR		MICHAEL JACKSON
SAFETY OFFICER		TROY CORN; JACK CATES DON WALLER (T)		AIR ATTACK SUPERVISOR		MIKE STOUT
5. Resources Assigned this Period						
Strike Team / Task Force / Resource Designator	LWD	Leader	Number Persons	Drop Off PT./Time	Pick Up PT./Time	
O-1.63 SOF2	08/19	JOHN BARNES	1	ICP/0600	ICP/1800	
E-231 ENG6 MT TOLMAN E-117*	08/30	RONALD SALAS	1	ICP/0600	ICP/1800	
E-185 WTS2 1A CONSTRUCTION & FIRE	08/30	TERRAL BURR	1	ICP/0600	ICP/1800	
E-187 WTS2 OWENS	08/19	JESSE OWENS	1	ICP/0600	ICP/1800	
E-221 WTT1 SUNDANCE 204	08/28	RODNEY FAY	1	ICP/0600	ICP/1800	
6. Control Operations/Work Assignments:						
<p>TASK - Secure fire line within its existing footprint, mop up as necessary to prevent fire escape. PURPOSE - Protect property and natural resources, outside fire footprint. END STATE - Fire is contained. Structures and private property are no longer threatened.</p>						
7. Special Instructions:						
<p>Backhaul all unnecessary equipment and supplies. GPS all pump locations. Identified IA resources be prepared to respond to IA as requested thru communications and as availability allows</p> <p>*=Resource identified for initial attack.</p>						
8. Division/Group Communication Summary						
Function	Channel	RX Frequency N/W	RX Tone/NAC	TX Frequency N/W	TX Tone/NAC	Mode
TACTICAL	4	166.7250	146.2	166.7250	146.2	A
COMMAND	7	173.9250	146.2	169.8375	146.2	A
COMMAND	10	172.5375	146.2	163.5500	146.2	A
AIR TO GROUND	14	171.8625		171.8625		A
9. Prepared By (Resource Unit Leader)			Approved By (Planning Section Chief)		Date	Time
NATHAN JEFFRIES			HOWARD JOHNSON		08/18/2021	2000

Division/Group Assignment List (ICS 204 WF)
Controlled Unclassified Information//Basic

1. Incident Name:				3.		
WHITMORE				Branch:	Division/Group C	
2. Operational Period: DAY						
Date/Time From: 08/19/2021 0600 THU		Date/Time To: 08/19/2021 1800 THU				
4. Operations Personnel						
OPERATIONS CHIEF		MATT CASTLE; KURT RANTA (T) JEFF BOUSCHOR		DIVISION/GROUP SUPERVISOR		DAN OBERG
SAFETY OFFICER		TROY CORN; JACK CATES DON WALLER (T)		AIR ATTACK SUPERVISOR		MIKE STOUT
5. Resources Assigned this Period						
Strike Team / Task Force / Resource Designator		LWD	Leader	Number Persons	Drop Off PT./Time	Pick Up PT./Time
O-174 SOF2		08/23	PAUL BRNA	1	ICP/0600	ICP/1800
O-116 TFLD*		08/25	ALEX NAGYGYOR	1	ICP/0600	ICP/1800
O-218 HEQB		08/25	TYLER TRAWEEK	1	ICP/0600	ICP/1800
C-3 HC2I MOCC INTERAGENCY CREW #4		08/21	TIMOTHY PERREN	20	ICP/0600	ICP/1800
E-133 ENG6 BIA AZ-NAA E-3661*		08/25	TONY WILLIAMS	3	ICP/0600	ICP/1800
E-18 WTS2 PORTABLE ROCK PRODUCTION		08/19	JIMMY POWELL	1	ICP/0600	ICP/1800
E-5001 WTS2 ELITE WATER WAGON		08/25	TYLER PEASLEY	1	ICP/0600	ICP/1800
E-113 UTV TOP GUN RESOURCES			- UNSTAFFED -		ICP/0600	ICP/1800
E-5 AMBU 1 MED TRANSPORT (ALS)		08/21	JENNIFER BOSTWICK	2	ICP/0600	ICP/1800
O-37 EMPF MEDIC 2		08/21	JENNEL SMITH	1	ICP/0600	ICP/1800
8. Division/Group Communication Summary						
Function	Channel	RX Frequency N/W	RX Tone/NAC	TX Frequency N/W	TX Tone/NAC	Mode
TACTICAL	6	168.2500	146.2	168.2500	146.2	A
COMMAND	7	173.9250	146.2	169.8375	146.2	A
COMMAND	10	172.5375	146.2	163.5500	146.2	A
AIR TO GROUND	14	171.8625		171.8625		A
9. Prepared By (Resource Unit Leader)			Approved By (Planning Section Chief)		Date	Time
NATHAN JEFFRIES			HOWARD JOHNSON		08/18/2021	2000

Division/Group Assignment List (ICS 204 WF)

Controlled Unclassified Information//Basic

1. Incident Name:			3.			
WHITMORE			Branch:		Division/Group	
2. Operational Period: DAY						
Date/Time From: 08/19/2021 0600 THU		Date/Time To: 08/19/2021 1800 THU		C		
4. Operations Personnel						
OPERATIONS CHIEF		MATT CASTLE; KURT RANTA (T) JEFF BOUSCHOR		DIVISION/GROUP SUPERVISOR		DAN OBERG
SAFETY OFFICER		TROY CORN; JACK CATES DON WALLER (T)		AIR ATTACK SUPERVISOR		MIKE STOUT
5. Resources Assigned this Period						
Strike Team / Task Force / Resource Designator		LWD	Leader	Number Persons	Drop Off PT./Time	Pick Up PT./Time
6. Control Operations/Work Assignments:						
<p>TASK - Secure fire line within its existing footprint, mop up as necessary to prevent fire escape. PURPOSE - Protect property and natural resources, outside fire footprint. END STATE - Fire is contained. Structures and private property are no longer threatened.</p>						
7. Special Instructions:						
<p>Backhaul all unnecessary equipment and supplies. GPS all pump locations. Identified IA resources be prepared to respond to IA as requested thru communications and as availability allows.</p> <p>*=Resource identified for initial attack.</p>						
8. Division/Group Communication Summary						
Function	Channel	RX Frequency N/W	RX Tone/NAC	TX Frequency N/W	TX Tone/NAC	Mode
TACTICAL	6	168.2500	146.2	168.2500	146.2	A
COMMAND	7	173.9250	146.2	169.8375	146.2	A
COMMAND	10	172.5375	146.2	163.5500	146.2	A
AIR TO GROUND	14	171.8625		171.8625		A
9. Prepared By (Resource Unit Leader)			Approved By (Planning Section Chief)		Date	Time
NATHAN JEFFRIES			HOWARD JOHNSON		08/18/2021	2000

Division/Group Assignment List (ICS 204 WF)
Controlled Unclassified Information//Basic

1. Incident Name:				3.		
WHITMORE				Branch:	Division/Group F	
2. Operational Period: DAY						
Date/Time From: 08/19/2021 0600 THU		Date/Time To: 08/19/2021 1800 THU				
4. Operations Personnel						
OPERATIONS CHIEF		MATT CASTLE; KURT RANTA (T) JEFF BOUSCHOR		DIVISION/GROUP SUPERVISOR		DAN OBERG JAMES DICKINSON (T)
SAFETY OFFICER		TROY CORN; JACK CATES DON WALLER (T)		AIR ATTACK SUPERVISOR		MIKE STOUT
5. Resources Assigned this Period						
Strike Team / Task Force / Resource Designator	LWD	Leader	Number Persons	Drop Off PT./Time	Pick Up PT./Time	
O-174 SOF2	08/23	PAUL BRNA	1	ICP/0600	ICP/1800	
O-118 TFLD	08/22	TROY MAGUIRE	1	ICP/0600	ICP/1800	
O-12 HEQB	08/21	TRAVIS BRUCH	1	ICP/0600	ICP/1800	
O-186 FMOD TOP NOTCH	08/24	KYLE ARMIJO	2			
C-1 HC2 GRIZZLY FIREFIGHTERS INC*	08/21	KARLA BEJAR	20	ICP/0600	ICP/1800	
C-21 HC2 FRANCO REFORESTATION	08/26	ARTURO QUEVEDO	20	ICP/0600	ICP/1800	
E-200 ENG5 PACIFIC OASIS	08/26	CASEY DOWNES	3	ICP/0600	ICP/1800	
E-204 ENG6 ROGUE RIVER FIRE AND WATER*	08/26	JASON FOSHEE	3	ICP/0600	ICP/1800	
E-210 ENG6 BLAZE RUNNERS	08/27	JOHN VINCENT	3	ICP/0600	ICP/1800	
E-19 WTS2 BOMBEROS WATER LLC	08/19	KURT FIGG-HOBLYN	1	ICP/0600	ICP/1800	
E-222 WTS2 WAYNE ONEY TENDER	08/27	WAYNE ONEY	1	ICP/0600	ICP/1800	
E-224 WTS2 NORTHERN UTAH FIRE	08/27	STEVE SPRAYCAR	1	ICP/0600	ICP/1800	
O-43 REMS 9 SPOKANE COUNTY FD9	08/19	CLINT JUNTUNEN	4	ICP/0600	ICP/1800	
8. Division/Group Communication Summary						
Function	Channel	RX Frequency N/W	RX Tone/NAC	TX Frequency N/W	TX Tone/NAC	Mode
TACTICAL	2	168.2000	146.2	168.2000	146.2	A
COMMAND	7	173.9250	146.2	169.8375	146.2	A
COMMAND	10	172.5375	146.2	163.5500	146.2	A
AIR TO GROUND	14	171.8625		171.8625		A
9. Prepared By (Resource Unit Leader)			Approved By (Planning Section Chief)		Date	Time
NATHAN JEFFRIES			HOWARD JOHNSON		08/18/2021	2000

Division/Group Assignment List (ICS 204 WF)
Controlled Unclassified Information//Basic

1. Incident Name:			3.			
WHITMORE			Branch:		Division/Group	
2. Operational Period: DAY					F	
Date/Time From: 08/19/2021 0600 THU		Date/Time To: 08/19/2021 1800 THU				
4. Operations Personnel						
OPERATIONS CHIEF		MATT CASTLE; KURT RANTA (T) JEFF BOUSCHOR		DIVISION/GROUP SUPERVISOR		DAN OBERG JAMES DICKINSON (T)
SAFETY OFFICER		TROY CORN; JACK CATES DON WALLER (T)		AIR ATTACK SUPERVISOR		MIKE STOUT
5. Resources Assigned this Period						
Strike Team / Task Force / Resource Designator		LWD	Leader	Number Persons	Drop Off PT./Time	Pick Up PT./Time
6. Control Operations/Work Assignments:						
<p>TASK - Secure fire line within its existing footprint, mop up as necessary to prevent fire escape. PURPOSE - Protect property and natural resources, outside fire footprint. END STATE - Fire is contained. Structures and private property are no longer threatened.</p>						
7. Special Instructions:						
<p>Backhaul all unnecessary equipment and supplies. GPS all pump locations. Identified IA resources be prepared to respond to IA as requested thru communications and as availability allows.</p> <p>*=Resource identified for initial attack.</p>						
8. Division/Group Communication Summary						
Function	Channel	RX Frequency N/W	RX Tone/NAC	TX Frequency N/W	TX Tone/NAC	Mode
TACTICAL	2	168.2000	146.2	168.2000	146.2	A
COMMAND	7	173.9250	146.2	169.8375	146.2	A
COMMAND	10	172.5375	146.2	163.5500	146.2	A
AIR TO GROUND	14	171.8625		171.8625		A
9. Prepared By (Resource Unit Leader)			Approved By (Planning Section Chief)		Date	Time
NATHAN JEFFRIES			HOWARD JOHNSON		08/18/2021	2000

Division/Group Assignment List (ICS 204 WF)
Controlled Unclassified Information//Basic

1. Incident Name:			3.			
WHITMORE			Branch:		Division/Group	
2. Operational Period: DAY					L	
Date/Time From: 08/19/2021 0600 THU		Date/Time To: 08/19/2021 1800 THU				
4. Operations Personnel						
OPERATIONS CHIEF		MATT CASTLE; KURT RANTA (T) JEFF BOUSCHOR		DIVISION/GROUP SUPERVISOR		BOB HINDS
SAFETY OFFICER		TROY CORN; JACK CATES DON WALLER (T)		AIR ATTACK SUPERVISOR		MIKE STOUT
5. Resources Assigned this Period						
Strike Team / Task Force / Resource Designator		LWD	Leader	Number Persons	Drop Off PT./Time	Pick Up PT./Time
O-1.63 SOF2		08/19	JOHN BARNES	1	ICP/0600	ICP/1800
O-109 TFLD		08/23	IZAACK MCHENRY	1	ICP/0600	ICP/1800
C-2 HC2 PACIFIC COAST CONTRACTING		08/20	NORBERTO PANTELEON	20	ICP/0600	ICP/1800
C-13 HC2 OC FORESTRY INC		08/21	COLIN VALENTIN	20	ICP/0600	ICP/1800
E-83 ENG6 TIMBERMANS TREE SERVICES		08/22	MARCUS ENICK	3	ICP/0600	ICP/1800
E-174 ENG6 MARYLAND FS TYPE 6		08/21	SERGIO CASTILLO	4	ICP/0600	ICP/1800
E-209 ENG6 JNJ CONTR		08/26	TRAVIS GRUNENFELDER	3	ICP/0600	ICP/1800
E-76 WTS2 LEVI PICARD		08/21	LEVI PICARD/DENNY	3	ICP/0600	ICP/1800
E-78 WTS2 COWBOY FIRE LLC		08/22	GREGORY WITSMAN	1	ICP/0600	ICP/1800
E-79 WTS2 SUGDEN FIRE		08/22	THOMAS SUGDEN	1	ICP/0600	ICP/1800
E-186 WTS2 BOULDER CREEK		08/29	CRAIG HOWE	1	ICP/0600	ICP/1800
E-111 UTV TOP GUN RESOURCES			-- UNSTAFFED --		ICP/0600	ICP/1800
E-175 UTV TOP GUN RESOURCES			-- UNSTAFFED --		ICP/0600	ICP/1800
E-5002 AMBU 3 MED TRANSPORT (ALS NON FIRELINE)		08/25	SHANNON STOSAK	1	ICP/0600	ICP/1800
O-62 EMPF MEDIC 1		08/20	JOHN LIPSKER	1	ICP/0600	ICP/1800
8. Division/Group Communication Summary						
Function	Channel	RX Frequency N/W	RX Tone/NAC	TX Frequency N/W	TX Tone/NAC	Mode
TACTICAL	3	168.6000	146.2	168.6000	146.2	A
COMMAND	7	173.9250	146.2	169.8375	146.2	A
COMMAND	10	172.5375	146.2	163.5500	146.2	A
AIR TO GROUND	14	171.8625		171.8625		A
9. Prepared By (Resource Unit Leader)			Approved By (Planning Section Chief)		Date	Time
NATHAN JEFFRIES			HOWARD JOHNSON		08/18/2021	2000

Division/Group Assignment List (ICS 204 WF)
Controlled Unclassified Information//Basic

1. Incident Name:				3.		
WHITMORE				Branch:	Division/Group L	
2. Operational Period: DAY						
Date/Time From: 08/19/2021 0600 THU		Date/Time To: 08/19/2021 1800 THU				
4. Operations Personnel						
OPERATIONS CHIEF		MATT CASTLE; KURT RANTA (T) JEFF BOUSCHOR		DIVISION/GROUP SUPERVISOR		BOB HINDS
SAFETY OFFICER		TROY CORN; JACK CATES DON WALLER (T)		AIR ATTACK SUPERVISOR		MIKE STOUT
5. Resources Assigned this Period						
Strike Team / Task Force / Resource Designator		LWD	Leader	Number Persons	Drop Off PT./Time	Pick Up PT./Time
O-36 EMPF MEDIC 3		08/21	JUSTIN SMITH	1	ICP/0600	ICP/1800
6. Control Operations/Work Assignments:						
<p>TASK - Secure fire line within its existing footprint, mop up as necessary to prevent fire escape. PURPOSE - Protect property and natural resources, outside fire footprint. END STATE - Fire is contained. Structures and private property are no longer threatened.</p>						
7. Special Instructions:						
<p>Backhaul all unnecessary equipment and supplies. GPS all pump locations. Identified IA resources be prepared to respond to IA as requested thru communications and as availability allows.</p> <p>*=Resource identified for initial attack.</p>						
8. Division/Group Communication Summary						
Function	Channel	RX Frequency N/W	RX Tone/NAC	TX Frequency N/W	TX Tone/NAC	Mode
TACTICAL	3	168.6000	146.2	168.6000	146.2	A
COMMAND	7	173.9250	146.2	169.8375	146.2	A
COMMAND	10	172.5375	146.2	163.5500	146.2	A
AIR TO GROUND	14	171.8625		171.8625		A
9. Prepared By (Resource Unit Leader)			Approved By (Planning Section Chief)		Date	Time
NATHAN JEFFRIES			HOWARD JOHNSON		08/18/2021	2000

AIR OPERATIONS SUMMARY

PREPARED BY: Paul Balfour

PREPARED DATE/TIME: August 18, 2021 2000hrs

INCIDENT NAME: WHITMORE	2. OPERATIONAL PERIOD: Date: 8/19/2021 Helibase Start Time: 0830 End Time: 2030 Sunrise: 0553 Sunset: 2005 (Times valid for Nespelem)
--	--

3. REMARKS (Safety Notes, Hazards, Air Operations Special Equipment, etc.): General Aviation, See & Avoid Bucket work, Retardant drops: ensure area is clear of ground personnel before dropping; watch for wires; be aware of potential for turbulence at ridge tops, saddles, canyons, etc *** BE AWARE OF FATIGUE, TAKE LONGER BREAKS WHEN FLYING IN SMOKEY CONDITIONS. *** Report all TFR intrusions to Air Operations, Air Support or Helibase as soon as possible.	4. MEDEVAC A/C: Contact Mt Tolman Fire Center 509-634-3100 N125CL Short Haul PSICC 425-783-6150	5. TFR #1/3986 Up to and including 9500msl 124.225 (A5)
---	---	--

PERSONNEL	Phone	7. FREQUENCIES	AM	FM	8. FIXED-WING	# Avail / Type/ Make-Model / FAA N# / Base(s)
AOBD: Paul Balfour O-1.40	509-993-8739	AIR/AIR Primary (A5)	124.225		Fixed Wing/Buckets	DIVS order thru ATGS if up, or Whitmore Communications
ASGS:		AIR/AIR Secondary (A16)	134.050			
HEBM:		AIR/GROUND Primary (A-17)		171.8625		LATs Order through Air Attack/AOBD Mt Tolman Dispatch
HEMG:		AIR/GROUND Secondary		156.0225 T-103.5		
HEMG: Randy Pyle (A34.4)	503-705-2734	Air Keller Flt Flw		Rx172.775 T-156.7		
ATGS:				Tx166.325 T-123.0		
Mt Tolman:	509-634-3100	Air/Grnd 03 IA		166.6125	NOTES:	
Debbie Coudell	509-570-4133	A/G DNR IA		159.270 T-103.5		
Michelle	509-675-0675					email costs to bal4@pauljbalfour.com

9. HELICOPTERS

FAA N#	TY	MAKE/MODEL	BASE	START	AVAIL	REMARKS	FAA N#	TY	MAKE/MODEL	BASE	START	AVAIL	REMARKS
							N448JS	1	Sikorsky S61	Colville 63S	0800	0900	Randy Pyle Mgr

INCIDENT RADIO COMMUNICATIONS PLAN (ICS 205)

Controlled Unclassified Information//Basic

1. Incident Name:	2. Date/Time Prepared:	3. Operational Period: DAY	
WHITMORE	Date: 08/18/2021 Time: 0906	Date/Time From: 08/19/2021 0600 THU	Date/Time To: 08/19/2021 1800 THU

4. Basic Radio Channel Use:

Zone Group	Ch #	Function	Channel Name/Trunked Radio System Talkgroup	Assignment	RX Freq	RX Tone/NAC	TX Freq	TX Tone/NAC	Mode (A,D, or M)	Remarks
	2	TACTICAL	TAC 2	DIV F	168.2000	146.2	168.2000	146.2	A	
	3	TACTICAL	TAC 3	DIV L	168.6000	146.2	168.6000	146.2	A	
	4	TACTICAL	TAC 4	DIV A / Z / W / P / M	166.7250	146.2	166.7250	146.2	A	
	6	TACTICAL	TAC 6	DIV C	168.2500	146.2	168.2500	146.2	A	
	7	COMMAND	CMD 7	EAST OF FIRE	173.9250	146.2	169.8375	146.2	A	ARMSTRONG LO-LINKED TO CMD8 & CMD10
	9	COMMAND	CMD 9	ALL DIVS - BACKUP CMD	169.7250	88.5	164.2500	100.0	A	FIRE A-MOSES MTN
	10	COMMAND	CMD 10	ALL DIVS	172.5375	146.2	163.5500	146.2	A	NEW - WHITMORE MTN-LINKED TO CMD7 & CMD8
	11	TACTICAL	MOSES	IA	169.7125	136.5	164.1625	100.0	A	FIRE B - MOSES MTN - IA ONLY
	12	TACTICAL	C TAC	IA	166.9750	151.4	166.9750	151.4	A	IA ONLY
	13	AIR TO GROUND	ATG 03	IA	166.6125		166.6125		A	IA ONLY
	14	AIR TO GROUND	A/G PRI	PRIMARY	171.8625		171.8625		A	AIR TO GROUND PRIMARY
	15	AIR TO GROUND	A/G SEC	SECONDARY	156.0225	103.5	156.0225	103.5	A	LOW POWER ONLY-NO MOBILES
	16	AIR GUARD	AIRGUARD	AIRGUARD	168.6250		168.6250	110.9	A	EMERGENCY AIR ONLY

5. Special Instructions:

6. Prepared By (Communications Unit Leader)	Name: MISSY PARKER	Signature: <i>Missy Parker /S/</i>
ICS 205	IAP Page	Date/Time: 08/18/2021 0906

Controlled Unclassified Information//Basic

FINAL

WHITMORE FIRE DMOB LIST

Thursday 08/19/21

EQUIPMENT

E-102	0600	ENG3	ELEPHANT HEAD
E-193	0600	ENG6	THUNDERBOLT FS
E-7	0615	ENG6	OREGON WOODS
E-8	0615	ENG6	NM-EMP NPS
E-11	0615	ENG6	CONNECTICUT INTERSTATE
E-85	0630	ENG6	OC FORESTRY
E-103	0630	ENG6	GE FORESTRY INC
E-179	0630	ENG3	WILDFIRE SUPPORT TEAM
E-17	0645	WTS2	FYR FLY LTD #68
E-203	0645	ENG4	JD FORESTRY
E-223	0645	WTS2	ALPINE TRANSPORT
E-197	0700	ENG6	CHAFEE CO. FPD V100
E-205	0700	ENG6	BIG STATE WILDFIRE
E-67	0700	AMBU	LINCOLN COUNTY AMB
E-198	1200	DOZ2	IRON TRIANGLE

OVERHEAD

O-62	1800	EMPF	LIPSKER, JOHN
O-37	1800	EMPF	SMITH, JENNEL
O-36	1800	EMPF	SMITH, JUSTIN
O-43	1800	AMBU	SPOKANE COUNTY FD9 REMS
O-1.63	2000	SOF2	BARNES, JOHN
O-174	2000	SOF2	BRNA, PAUL

***** DMOB INSTRUCTIONS FOR ALL RESOURCES *****

In the COVID-19 environment, we are limiting direct contact whenever possible including the DMOB process. As such, much of the process will be completed via cell phone. Any in-person interaction will be outside and face coverings are required during this interaction. When turning in supplies, limit resource representation to one person if possible. Updated times/shift tickets with finance will speed up the process.

***** DMOB STEPS FOR ALL RESOURCES *****

(Must Be Done In Order)

1. If you have any items checked out by Supply and Communications, proceed to those areas to turn in equipment. If you don't have any items checked out, proceed to **NEXT STEP**.
2. If you were inspected upon arrival or need a No Claims/No Comp receipt, check out with Ground Support located at ICP Help Table. If this does not apply, proceed to **NEXT STEP**.
3. Call Finance at 509-634-2013 to finalize paperwork located outside at ICP Help Table.
4. Call DMOB at 509-634-2017 to complete the process.

If you follow this process, you will be made available in the ordering system faster for your next assignment. Any questions about the process please contact DMOB at 509-634-2017.



Human Resource Message



Whitmore Fire - August 19, 2021 0600-1800

THANK YOU! The Colville Agency, the DNR, and NW Team 12 would like to thank each of you for the professional and competent way you approached your fire assignment. Thank you all for a job well done!

We look forward to working with you again on the next fire assignment. Please have a safe journey home and make sure if you are tired, switch drivers and or pull safely off the road and rest until it is safe for you to drive. Please be mindful of your actions and keep in mind mutual respect, appropriate behavior, and always do what is right.

Many of us have been away from home for a couple of months. Family members back home are taking care of all the details of normal life and have not had a break from childcare, bill paying, food preparation, laundry, etc. Please recognize the work and support that is behind the scenes of fire personnel. These folks deserve a thank you as well. They too are on the front lines and deserve recognition. Please acknowledge them upon your return home. It is a good thing!

The Community Food Distribution Center thanks you for all the food donations. The food will be distributed throughout the local community. In a small way, we made a difference, and this means a lot.

Try to get as much rest as possible so you are ready for the next assignment. Whether you get called out for a fire in this region or out of region, your support is needed and appreciated. Take care and I am sure we will see you soon.

Happy Trails to you!



Quote for the day: “Appreciation is a wonderful thing. It makes what is excellent in others belong to us as well.” -*Voltaire*

Contact: Susie Manezes, HRSP at 602-571-9327 or smanezes@blm.gov

Logistics Message

Whitmore Fire

Supply Hours

Cache 0530 to 2200

Ordering 0600 to 2200

Ground Support

0600 to 2200

Kitchen Hours

Breakfast 0500 to 0900

Dinner 1700 to 2200

Lunch and Ice Refer 0500-0800, 1100-1300, 1700-1800

Shower Trailer Hours

0500-1200

1200-1400 Closed for Cleaning

1400-2200



Whitmore Fire Finance

**Thank you for
all your hard
work. Please
stay safe.**

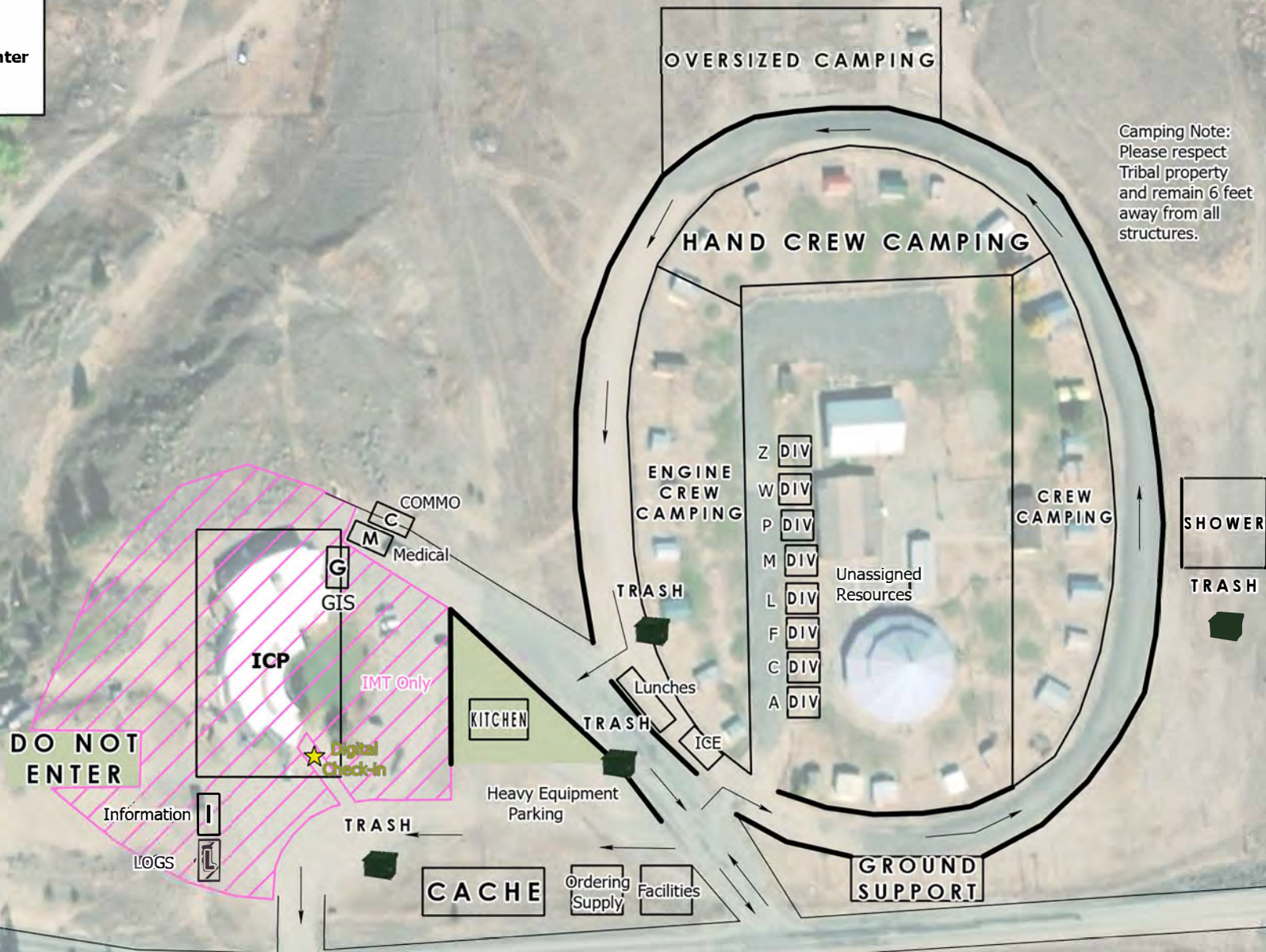
Cheri Fuller, Christina Goebel, Carol Long, Mark Bohnet, Rob Hechinger,
Frances Tobia and Todd Powell

**Whitmore
WA-COA-200106**

**Camp Map
Nespelem Community Center**



Camping Note:
Please respect
Tribal property
and remain 6 feet
away from all
structures.



S. Bushnell
07 20 21
Maxar, 2027 Hours

Incident Maps

For incident maps scan the QR code on the cover of the IAP to open the 'Current Maps' folder.

How to Download Maps in Avenza

If you're cell signal is poor you may need to connect to a wifi to download maps. However sometimes being connected to a wifi can slow map downloads. You'll just have to find out what works best.

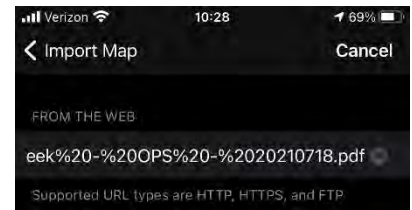
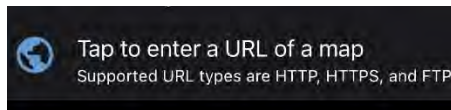
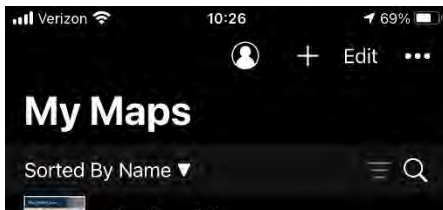
Method 1: From a browser - If you have a good cell or wifi signal

1. Tap on the desired map link and wait for the preview. *If it fails to load, use method 2 instead*
2. Tap the 'send to' icon (square with up arrow)
3. Choose the Avenza app



Method 2: From Avenza direct – if you don't have a good cell or wifi signal

1. Tap and hold on the desired map link, then choose 'copy' to copy the direct URL to the map
2. Launch the Avenza app
3. When not in any map... Tap the + (plus) icon at the top of the screen
4. Choose the load from URL option (last choice)
5. Paste the direct URL to the map
6. Tap 'Done' ; the map will begin downloading








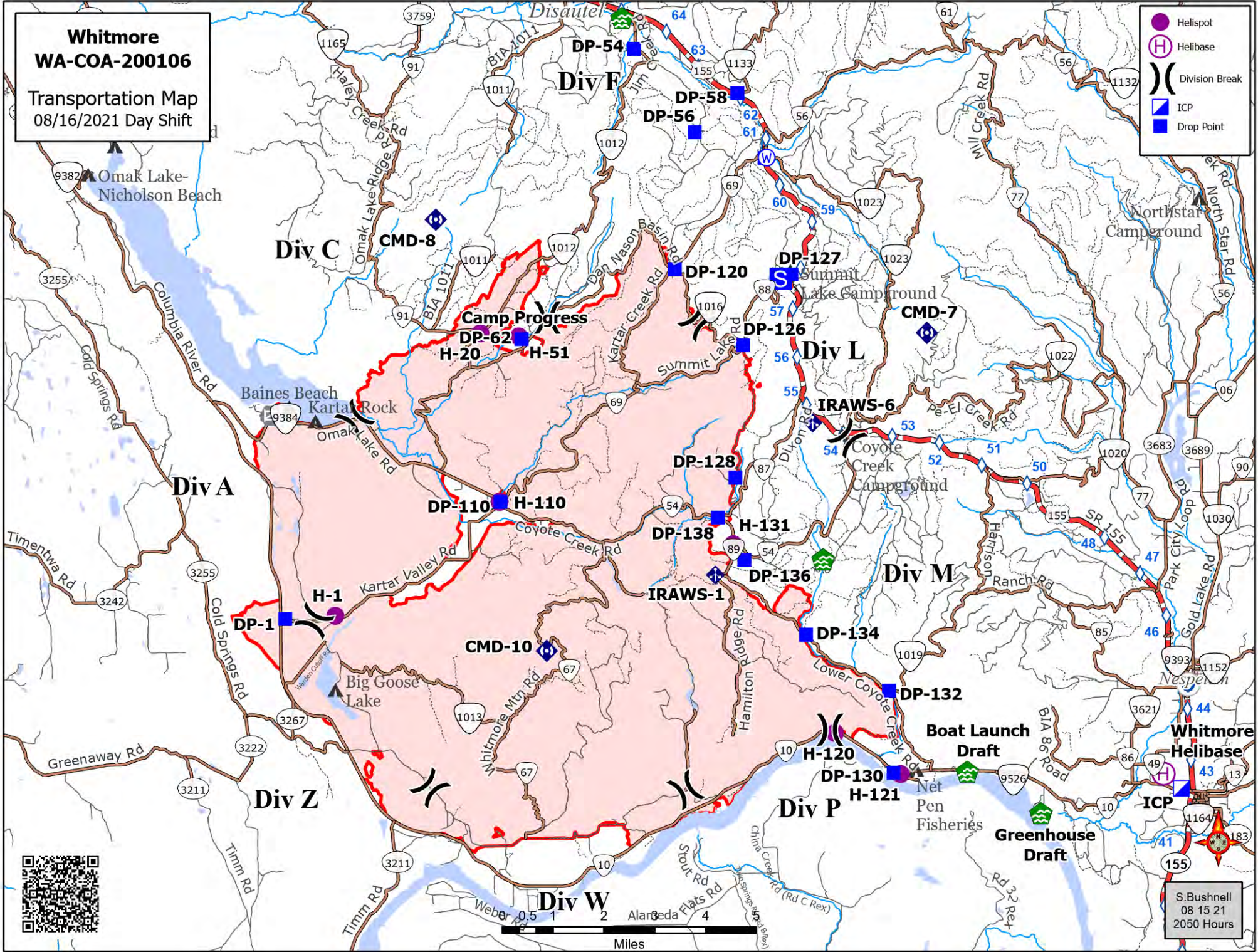
How to Send Map Updates to the Situation Unit

1. From within the map in Avenza, click the pin with three lines near the lower-right corner.
2. *iPhone:* In the lower right, click the square with up arrow. From the pop-up menu, choose Export to Others.
Android: In the lower right, click the circle with three lines. Click the pop-up circle with up arrow.
3. Set these options:
 - a. Filename – leave alone
 - b. Export Format – choose SHP, GPX or KML
 - c. Data – all features
 - d. Image size – no image
4. Click the Export button in the upper-right corner.
5. When the export is ready, choose your Mail application.
6. Email the update to 2021.whitmore.situation@firenet.gov.
7. If you have questions, call or text the Situation Unit at 360-584-3373.
8. Your email needs to include an explanation of the data you are sending and a contact phone number.

**Whitmore
WA-COA-200106**

Transportation Map
08/16/2021 Day Shift

-  Helispot
-  Helibase
-  Division Break
-  ICP
-  Drop Point



Whitmore Helibase

ICP

Greenhouse Draft

Boat Launch Draft

Net Pen Fisheries

S. Bushnell
08 15 21
2050 Hours

WHITMORE FIRE COVID-19 MITIGATIONS

Supervisors are required to go over this list each morning with assigned resources- report any positive symptoms to medical unit.

In the last 24 hours have you experienced:

- Cough more than expected?
- Shortness of breath or difficulty breathing?
- Fever? Chills?
- Muscle pain, outside your normal for firefighting?
- Sore throat?
- New loss of taste or smell?
- Fatigue, outside your normal for firefighting?
- Headache, outside your normal for firefighting?
- Congestion or runny nose, outside your normal for firefighting?
- Nausea or vomiting
- Diarrhea

** Take temperature with no-touch thermometer, if available **



Wear a mask in fire camp regardless of vaccination status, unless outdoors and able to maintain at least 6ft of distance at all times, alone in an enclosed space or actively engaged in firefighting on the fireline.

Use the Zoom link provided to join briefings remotely.

Observe 6ft Distancing whenever possible.

Observe “Module as One” practices – only close contact with crew (engine, handcrew, etc.) that you live and work with all summer. Observe distancing and masking around everyone else. Do not co-mingle with other crews or “modules” in camp or on the line.

Send crew representatives to pick up meals - masks must be worn in food lines.

No entry to ICP building except Incident Management Team members

Wash hands frequently and disinfect high-traffic areas on a regular basis.

Limit close contact between firefighters and the public to prevent exposure and spread.



EMERGENCY PLAN INCIDENT WITHIN AN INCIDENT

ON SCENE INCIDENT COMMANDER

In the event of an accident or medical incident of any size, your primary responsibility is to ENSURE that the victim(s) receive prompt and effective Triage, Treatment, Extrication and Transport.

- **ENSURE THE MEDICAL INCIDENT REPORT IN THE INCIDENT ACTION PLAN IS BEING USED AND FOLLOWED- *IF DETERMINED TO BE A GREEN, DO NOT DECLARE EMERGENCY TRAFFIC AND ONLY COMPLETE LINE 1-4 ON MIR*.**
- Conduct size-up of the incident nature of accident, number type of resources involved, latitude and longitude location (DD°MMM.MM format): notify incident communications center and supervisor, request assistance as needed.
- Order and coordinate medical and support response to the accident.
- Evaluate special needs (law enforcement, haz mat, etc.).
- Clear the command frequency if medical emergency, coordinate with incident communications and air attack for air medical transportation needs.
- Preserve and photograph the scene for accident investigation.
- Remain aware of surroundings and the status of the main incident (delegate personnel to monitor the main fire) to ensure safety of medical treatment personnel.
- Until relieved, supervise and manage all personnel involved at the incident scene.

MEDICAL PLAN (ICS 206 WF)

20 Incident/Project Name		1. Operational Period			
Whitmore Fire		Date/Time 8/18/2021 0600-1900			
2. Ambulance Services					
Name	Complete Address	Phone		Advanced Life Support (ALS) Yes No	
Colville Tribal EMS Nespelem, WA	410 10 th St. Nespelem, WA 99155	911 - Dispatch 509-634-2472 509-978-9323			x
Lifeline Ambulance	912 Koala Ave Omak, WA 98841	911 - Dispatch 509-663-8091		x	
3. Air Ambulance Services					
Name	Phone	Type of Aircraft & Capability			
Airlift Northwest	800-426-2430 or 911	Rotor in Wenatchee			
Life Flight Network	800-232-0911	2 Rotors, 1 Fixed Wing, Spokane			
4. Hospitals					
Name Complete Address	GPS Datum – WGS 84 Coordinate Standard Degrees Decimal Minutes DD° MM.MMM' N - Lat DD° MM.MMM' W - Long	Travel Time From ICP Air Gnd		Phone	Helipad Yes No
Coulee Medical Center 411 Fortuyn Rd Grand Coulee, WA 99133	Lat: 44°56.5186' N	20 Min	40 Min	509-633-1753	x
	Long: 119°0.4333' W				
	VHF:				
Mid-Valley Hospital 912 Koala Ave Omak, WA 98841	Lat: 48°23.8336' N	40 Min	1Hr 14 min	509-826-1760	x
	Long: 119°32.8758' W				
	VHF:				
Confluence Health Hospital (Central Washington Hospital) 1201 S Miller St. Wenatchee, WA 98801	Lat: 47°24.4340' N	1Hr 10 Min	2 Hr 30 Min	509-662-1511	x
	Long: 120°19.3664' W				
	VHF :				
Harborview Medical 325 9 th Ave Seattle, WA 98104	Lat: 47°36.1897' N	2 Hr 15 Min	4 Hr 30 Min	541-222-6929	x
	Long: 122°19.4759' W				
	VHF:				
5. Division Branch Group		Capability		Personnel	
Div A/W/Z/P/M		Medic 3 Justin Smith O-36			
Div L		Medic 3 Justin Smith O-36		Ambo 3 (ALS Non Fireline) E-5002	
Div C		Medic 2 Jennel Smith O-37		Medic 1 Lipsker O-62	
Div F		REMS 9 O-43			
6. Prepared By (Medical Unit Leader)		7. Date/Time		8. Reviewed By (Safety Officer)	
Diana Braun, MEDL		08/17/2021 1800		<i>Don Waller /S/</i>	
				08/17/2021 1800	

MEDICAL PLAN (ICS 206 WF)

Controlled Unclassified Information//Basic

Medical Incident Report

FOR A NON-EMERGENCY INCIDENT, WORK THROUGH CHAIN OF COMMAND TO REPORT AND TRANSPORT INJURED PERSONNEL AS NECESSARY.

FOR A MEDICAL EMERGENCY: IDENTIFY ON SCENE INCIDENT COMMANDER BY NAME AND POSITION AND ANNOUNCE "MEDICAL EMERGENCY" TO INITIATE RESPONSE FROM IMT COMMUNICATIONS/DISPATCH.

Use the following items to communicate situation to communications/dispatch.

1. CONTACT COMMUNICATIONS / DISPATCH (Verify correct frequency prior to starting report)

Ex: "Communications, Div. Alpha. Stand-by for Emergency Traffic."

2. INCIDENT STATUS: Provide incident summary (including number of patients) and command structure.

Ex: "Communications, I have a Red priority patient, unconscious, struck by a falling tree. Requesting air ambulance to Forest Road 1 at (Lat./Long.) This will be the Trout Meadow Medical, IC is TFLD Jones. EMT Smith is providing medical care."

Severity of Emergency / Transport Priority	<input type="checkbox"/> RED / PRIORITY 1 Life or limb threatening injury or illness. Evacuation need is IMMEDIATE <i>Ex: Unconscious, difficulty breathing, bleeding severely, 2° – 3° burns more than 4 palm sizes, heat stroke, disoriented.</i> <input type="checkbox"/> YELLOW / PRIORITY 2 Serious Injury or illness. Evacuation may be DELAYED if necessary. <i>Ex: Significant trauma, unable to walk, 2° – 3° burns not more than 1-3 palm sizes.</i> <input type="checkbox"/> GREEN / PRIORITY 3 Minor Injury or illness. Non-Emergency transport <i>Ex: Sprains, strains, minor heat-related illness.</i>	
Nature of Injury or Illness & Mechanism of Injury		<i>Brief Summary of Injury or Illness (Ex: Unconscious, Struck by Falling Tree)</i>
Transport Request		<i>Air Ambulance / Short Haul/Hoist Ground Ambulance / Other</i>
Patient Location		<i>Descriptive Location & Lat. / Long. (WGS84)</i>
Incident Name		<i>Geographic Name + "Medical" (Ex: Trout Meadow Medical)</i>
On-Scene Incident Commander		<i>Name of on-scene IC of Incident within an Incident (Ex: TFLD Jones)</i>
Patient Care		<i>Name of Care Provider (Ex: EMT Smith)</i>

3. INITIAL PATIENT ASSESSMENT: Complete this section for each patient as applicable (start with the most severe patient)

Patient Assessment: See IRPG page 106

Treatment:

4. TRANSPORT PLAN:

Evacuation Location (if different): (Descriptive Location (drop point, intersection, etc.) or Lat. / Long.) Patient's ETA to Evacuation Location:

Helispot / Extraction Site Size and Hazards:

5. ADDITIONAL RESOURCES / EQUIPMENT NEEDS:

Example: Paramedic/EMT, Crews, Immobilization Devices, AED, Oxygen, Trauma Bag, IV/Fluid(s), Splints, Rope rescue, Wheeled litter, HAZMAT, Extrication

6. COMMUNICATIONS: Identify State Air/Ground EMS Frequencies and Hospital Contacts as applicable

Function	Channel Name/Number	Receive (RX)	Tone/NAC *	Transmit (TX)	Tone/NAC *
COMMAND					
AIR-TO-GRND					
TACTICAL					

7. CONTINGENCY: Considerations: If primary options fail, what actions can be implemented in conjunction with primary evacuation method? Be thinking ahead.

8. ADDITIONAL INFORMATION: Updates/Changes, etc.

REMEMBER: Confirm ETA's of resources ordered. Act according to your level of training. Be Alert. Keep Calm. Think Clearly. Act Decisively.

Controlled Unclassified Information//Basic