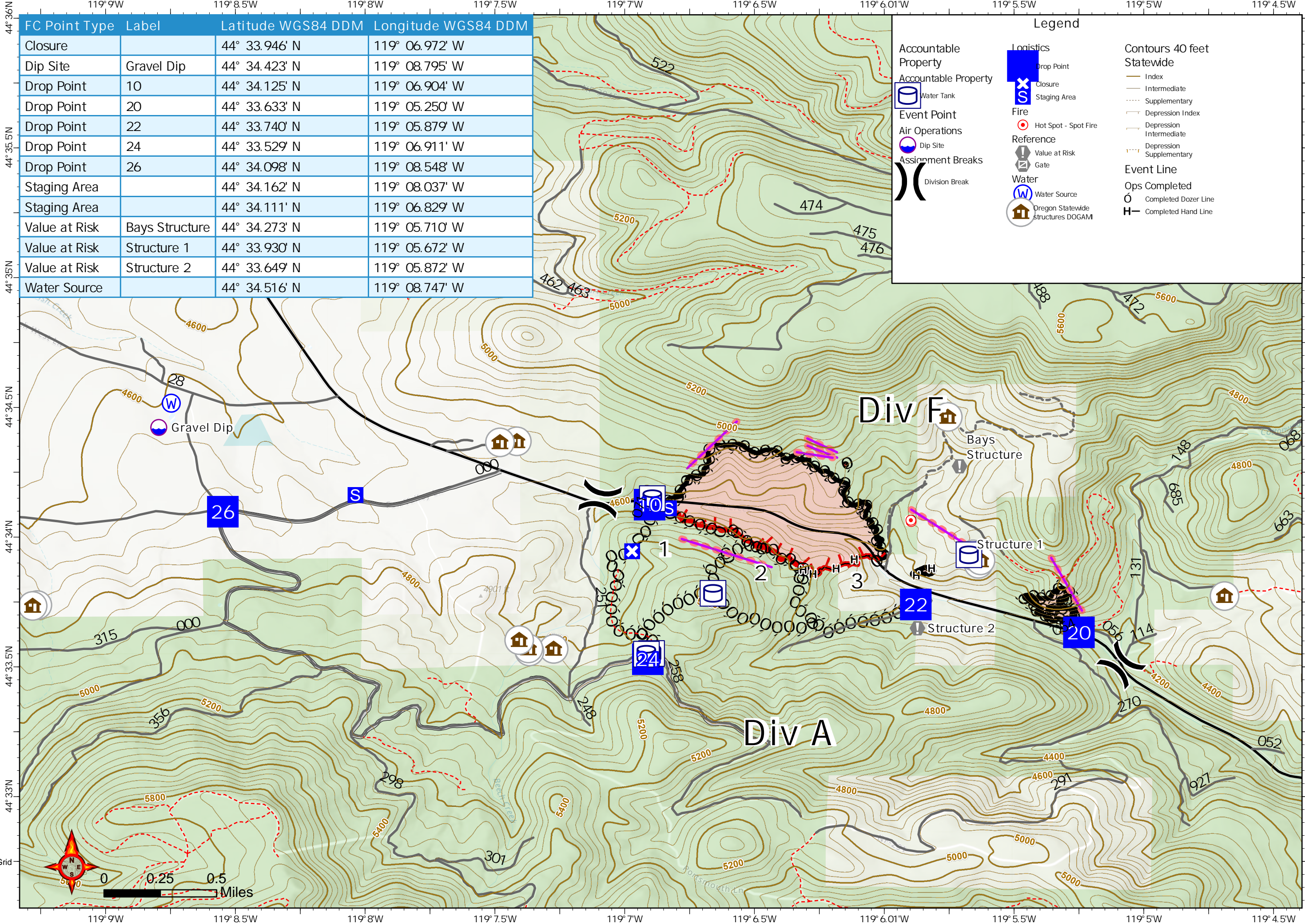


Beech Creek
ORMAF-22131
08/07/2022 - 24hr

155
acres at
Aug 5, 2022 - 1100

IAP Map

8/6/2022 2054
Acres from GPS
WGS 1984 Datum. LatLong Grid



FC Point Type	Label	Latitude WGS84 DDM	Longitude WGS84 DDM
Closure		44° 33.946' N	119° 06.972' W
Dip Site	Gravel Dip	44° 34.423' N	119° 08.795' W
Drop Point	10	44° 34.125' N	119° 06.904' W
Drop Point	20	44° 33.633' N	119° 05.250' W
Drop Point	22	44° 33.740' N	119° 05.879' W
Drop Point	24	44° 33.529' N	119° 06.911' W
Drop Point	26	44° 34.098' N	119° 08.548' W
Staging Area		44° 34.162' N	119° 08.037' W
Staging Area		44° 34.111' N	119° 06.829' W
Value at Risk	Bays Structure	44° 34.273' N	119° 05.710' W
Value at Risk	Structure 1	44° 33.930' N	119° 05.672' W
Value at Risk	Structure 2	44° 33.649' N	119° 05.872' W
Water Source		44° 34.516' N	119° 08.747' W

Legend

- Accountable Property**
 - Water Tank
- Event Point**
 - Dip Site
- Air Operations**
 - Assignment Breaks
- Logistics**
 - Drop Point
 - Closure
 - Staging Area
- Fire**
 - Hot Spot - Spot Fire
- Reference**
 - Value at Risk
 - Gate
- Water**
 - Water Source
 - Oregon Statewide Structures DOGAM
- Contours 40 feet Statewide**
 - Index
 - Intermediate
 - Supplementary
 - Depression Index
 - Depression Intermediate
 - Depression Supplementary
- Event Line**
 - Ops Completed
 - Completed Dozer Line
 - Completed Hand Line

