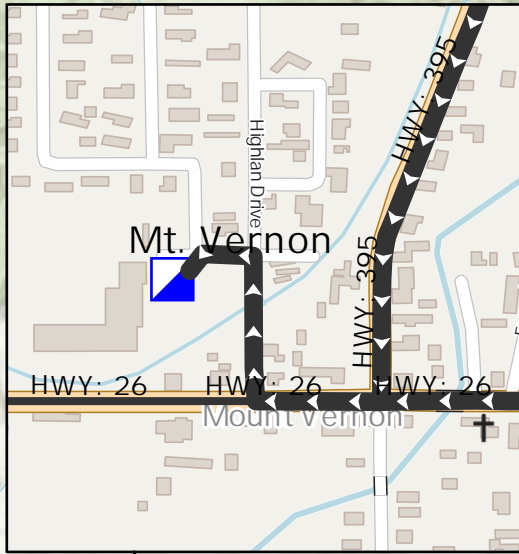
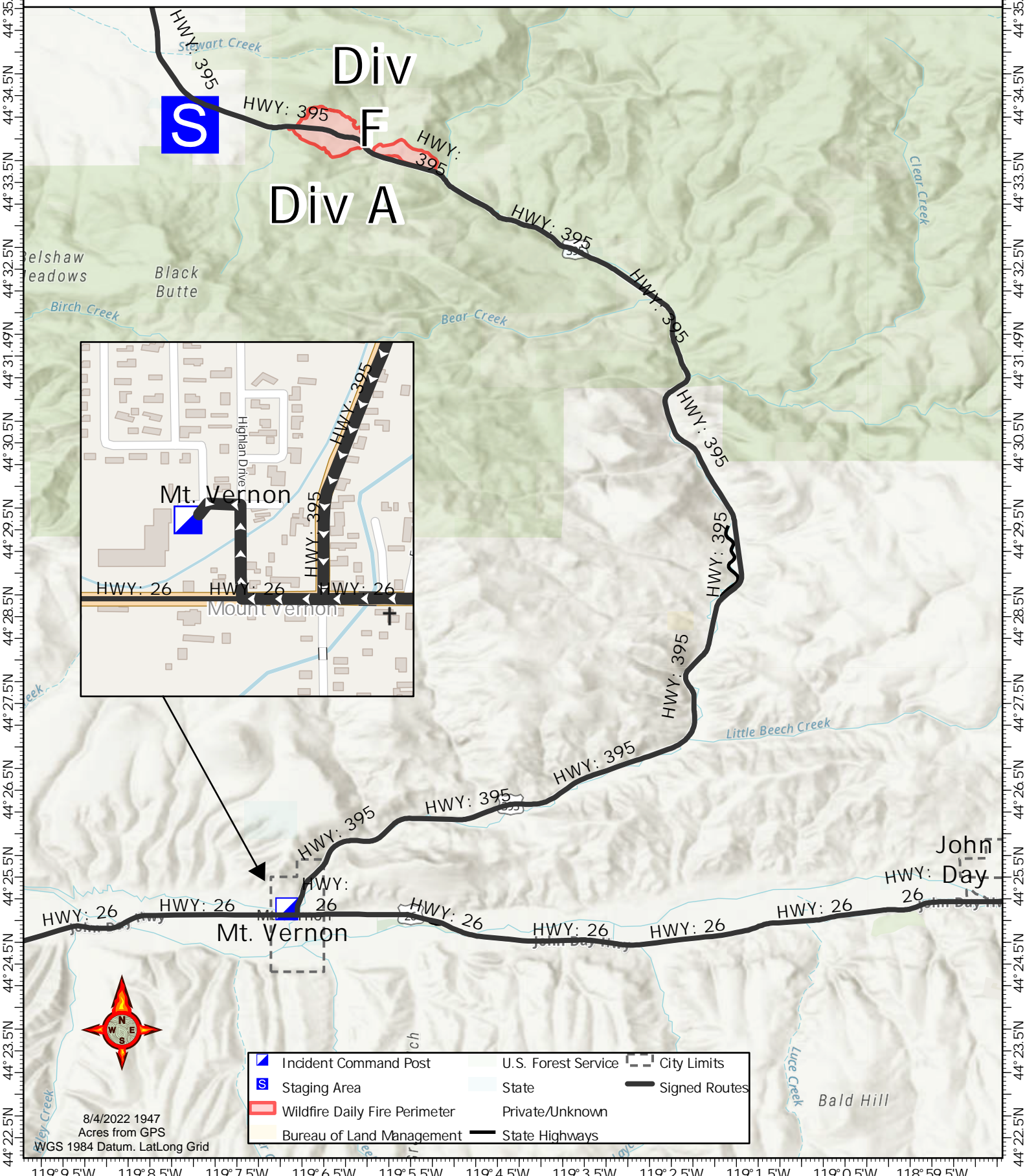


119°9.5W 119°8.5W 119°7.5W 119°6.5W 119°5.5W 119°4.5W 119°3.5W 119°2.5W 119°1.5W 119°0.5W 118°59.5W

Transportation

254
acres at
8/2/22 - 2100

Beech Creek
ORMAF-22131



	Staging Area		State		City Limits
	Wildfire Daily Fire Perimeter		Private/Unknown		Signed Routes
	Bureau of Land Management		U.S. Forest Service		State Highways



8/4/2022 1947
Acres from GPS
WGS 1984 Datum. LatLong Grid