

119°9.5W 119°8.5W 119°7.5W 119°6.5W 119°5.5W 119°4.5W 119°3.5W 119°2.5W 119°1.5W 119°0.5W 118°59.5W

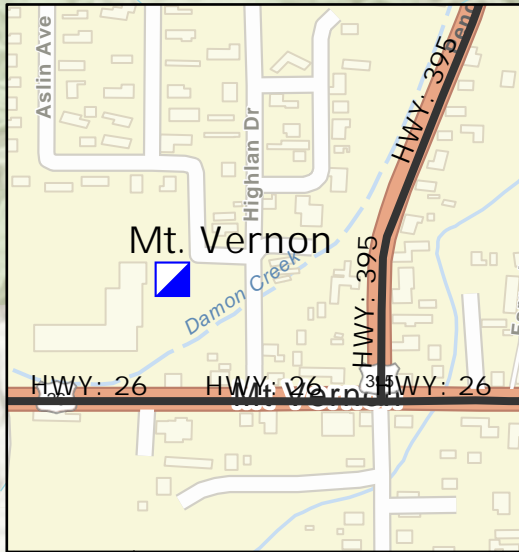
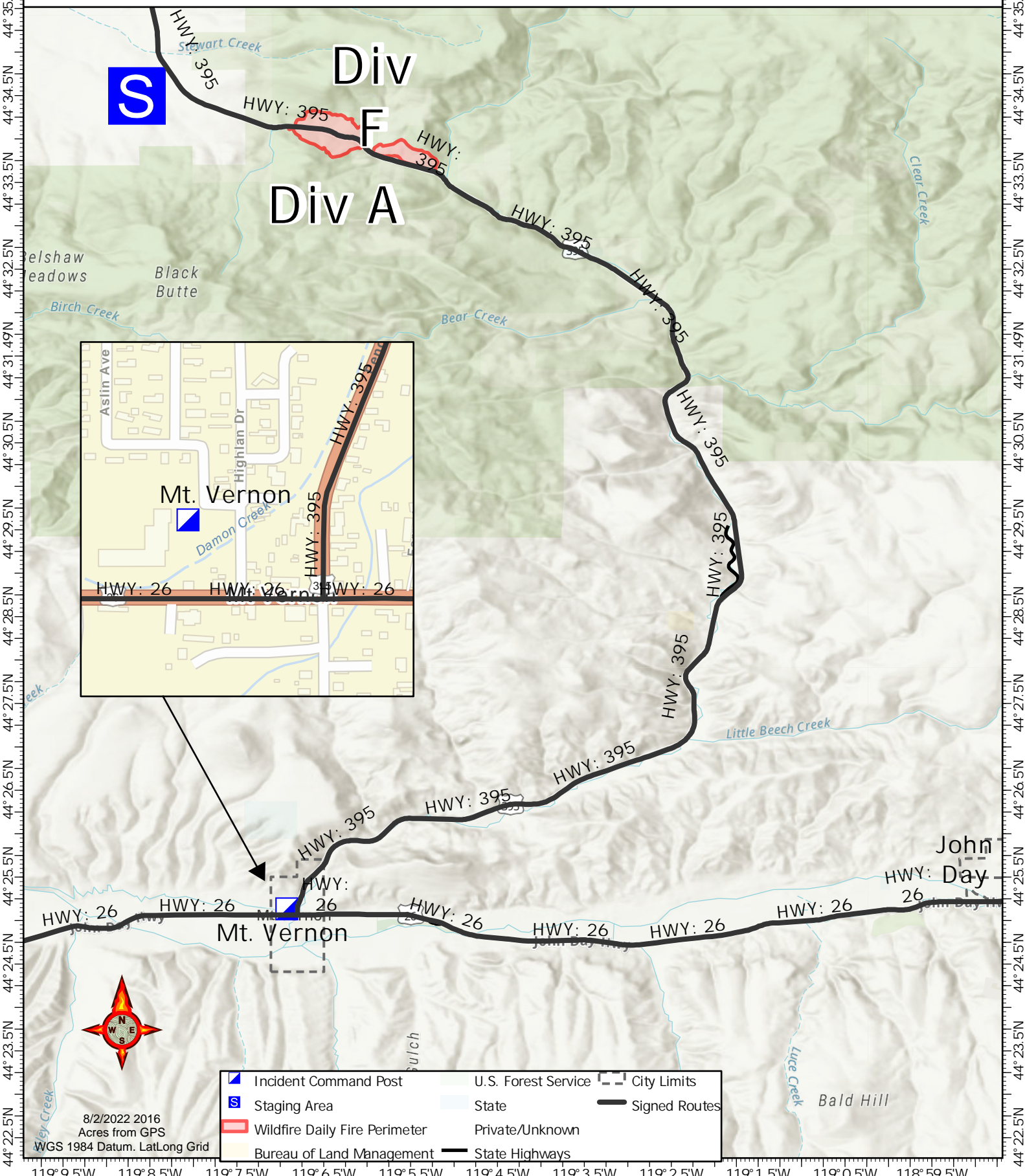
Transportation

248
acres at
8/2/22 - 1500

Beech Creek
ORMAF-22131
08/03/2022 - Day



Div F
Div A



Mt. Vernon

John Day

Mt. Vernon



	Incident Command Post		U.S. Forest Service		City Limits
	Wildfire Daily Fire Perimeter		State		Signed Routes
	Bureau of Land Management		Private/Unknown		State Highways

8/2/2022 2016
Acres from GPS
WGS 1984 Datum. Lat/Long Grid

44°36.5N
44°35.5N
44°34.5N
44°33.5N
44°32.5N
44°31.49N
44°30.5N
44°29.5N
44°28.5N
44°27.5N
44°26.5N
44°25.5N
44°24.5N
44°23.5N
44°22.5N

44°36.5N
44°35.5N
44°34.5N
44°33.5N
44°32.5N
44°31.49N
44°30.5N
44°29.5N
44°28.5N
44°27.5N
44°26.5N
44°25.5N
44°24.5N
44°23.5N
44°22.5N