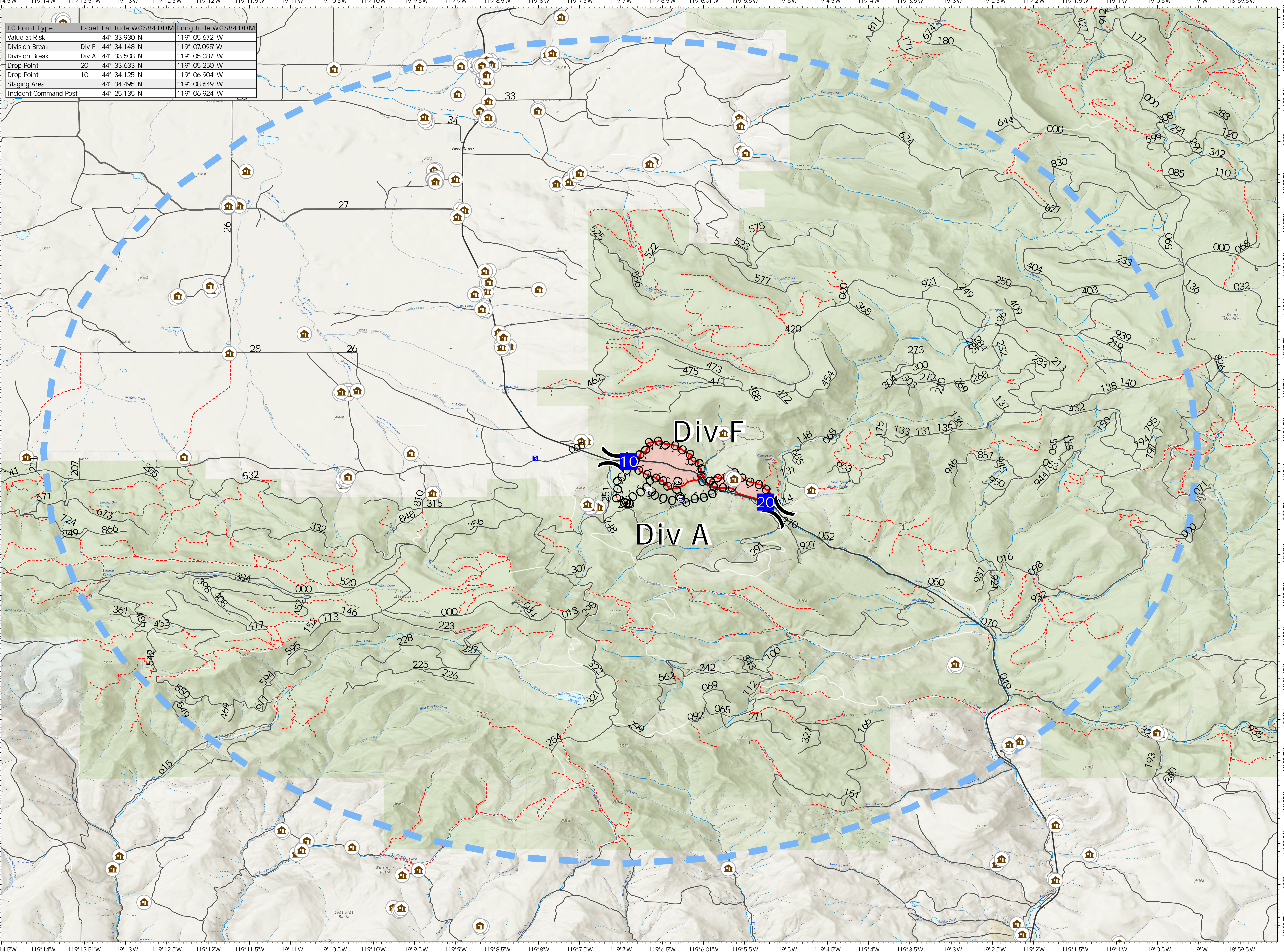


FC Point Type	Label	Latitude WGS84 DDM	Longitude WGS84 DDM
Value at Risk	Div F	44° 33.930' N	119° 05.672' W
Division Break	Div F	44° 34.148' N	119° 07.095' W
Division Break	Div A	44° 33.508' N	119° 05.087' W
Drop Point	20	44° 33.633' N	119° 05.250' W
Drop Point	10	44° 34.125' N	119° 06.904' W
Staging Area		44° 34.495' N	119° 08.649' W
Incident Command Post		44° 25.135' N	119° 06.924' W



8/3/2022 2022
 Acres from GPS
 WGS 1984 Datum, Lat/Long Grid

0 0.25 0.5 1 1.5 2 Miles

<p>Major Roads</p> <ul style="list-style-type: none"> Major Roads Closed Roads Aerial Fire Retardant Application Areas Temporary 	<p>Event Point</p> <p>Assignment Breaks</p>	<p>Logistics</p> <ul style="list-style-type: none"> Drop Point Staging Area Value at Risk 	<p>Event Line</p> <p>Ops Completed</p> <ul style="list-style-type: none"> Completed Inner Line Completed Hand Line Reference Other 	<p>Air Ops</p> <p>Temporary Flight Restriction</p> <p>Perimeter Line</p> <p>FC Line Type</p> <ul style="list-style-type: none"> Uncontained 	<p>Event Polygon</p> <p>Polygon Type</p> <ul style="list-style-type: none"> Wildfire Daily Fire Perimeter Land Ownership - Dissolved Bureau of Land Management 	<p>U.S. Forest Service</p> <p>Site</p> <ul style="list-style-type: none"> Plants/Unknown <p>Signed Routes</p> <ul style="list-style-type: none"> Signed Routes 	<p>Hydrographic Point Features</p> <ul style="list-style-type: none"> Spring/Seep Well Waterfall Rapids Gauging Station Reservoir <p>Hydrographic Line Feature Periodicity</p> <ul style="list-style-type: none"> Stream/River Perennial 	<p>Stream/River</p> <ul style="list-style-type: none"> Intermittent Stream/River Ephemeral Stream/River Coastline Canal/Ditch Pipeline Underground Conduit <p>Artificial Path</p> <ul style="list-style-type: none"> Connector <p>Hydrographic Water Body Features</p> <ul style="list-style-type: none"> Lake, Pond, or Reservoir Marsh or Swamp Estuary 	<p>Hydrographic Polygon Feature Types</p> <ul style="list-style-type: none"> Range Ice Mass Dam or Weir Area of Complex Channel Lock Chamber Saltway Water Intake/Outflow River or Stream Bay or Inlet Inundation Area
---	--	---	---	--	--	--	---	---	--

