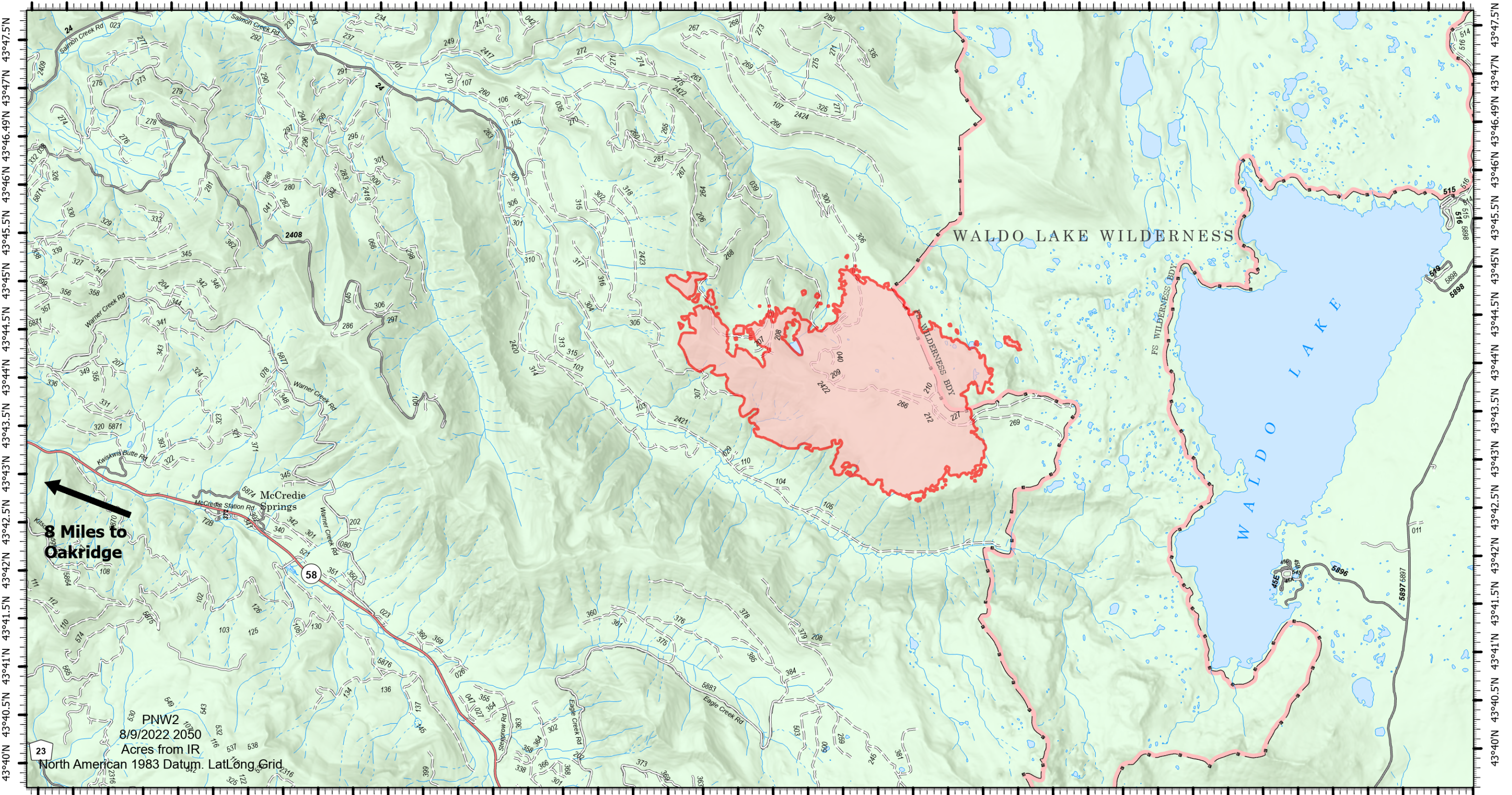
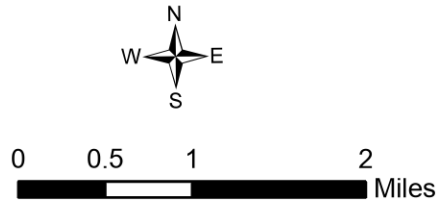


122°20.5'W 122°19.5'W 122°18.5'W 122°17.5'W 122°16.5'W 122°15.5'W 122°14.5'W 122°13.51'W 122°12.5'W 122°11.5'W 122°10.5'W 122°9.5'W 122°8.5'W 122°7.5'W 122°6.5'W 122°5.5'W 122°4.5'W 122°3.5'W 122°2.5'W 122°1.5'W 122°0.5'W



122°20.5'W 122°19.5'W 122°18.5'W 122°17.5'W 122°16.5'W 122°15.5'W 122°14.5'W 122°13.51'W 122°12.5'W 122°11.5'W 122°10.5'W 122°9.5'W 122°8.5'W 122°7.5'W 122°6.5'W 122°5.5'W 122°4.5'W 122°3.5'W 122°2.5'W 122°1.5'W 122°0.5'W

PIO
Cedar Creek
OR-WIF-220180
8/10/2022 Day
3536 acres at 8/9/2022 @ 0100



- Wildfire Daily Fire Perimeter
- Secondary Highway
- Paved Roads
- Dirt (Not Paved)
- Paved Road
- Gravel Road
- Unimproved Roads
- Forest Service Land



PNW2
8/9/2022 2050
Acres from IR
North American 1983 Datum. LatLong Grid