

# PILOT

Cedar Creek  
OR-WIF-220180  
9/4/2022 24 Hour

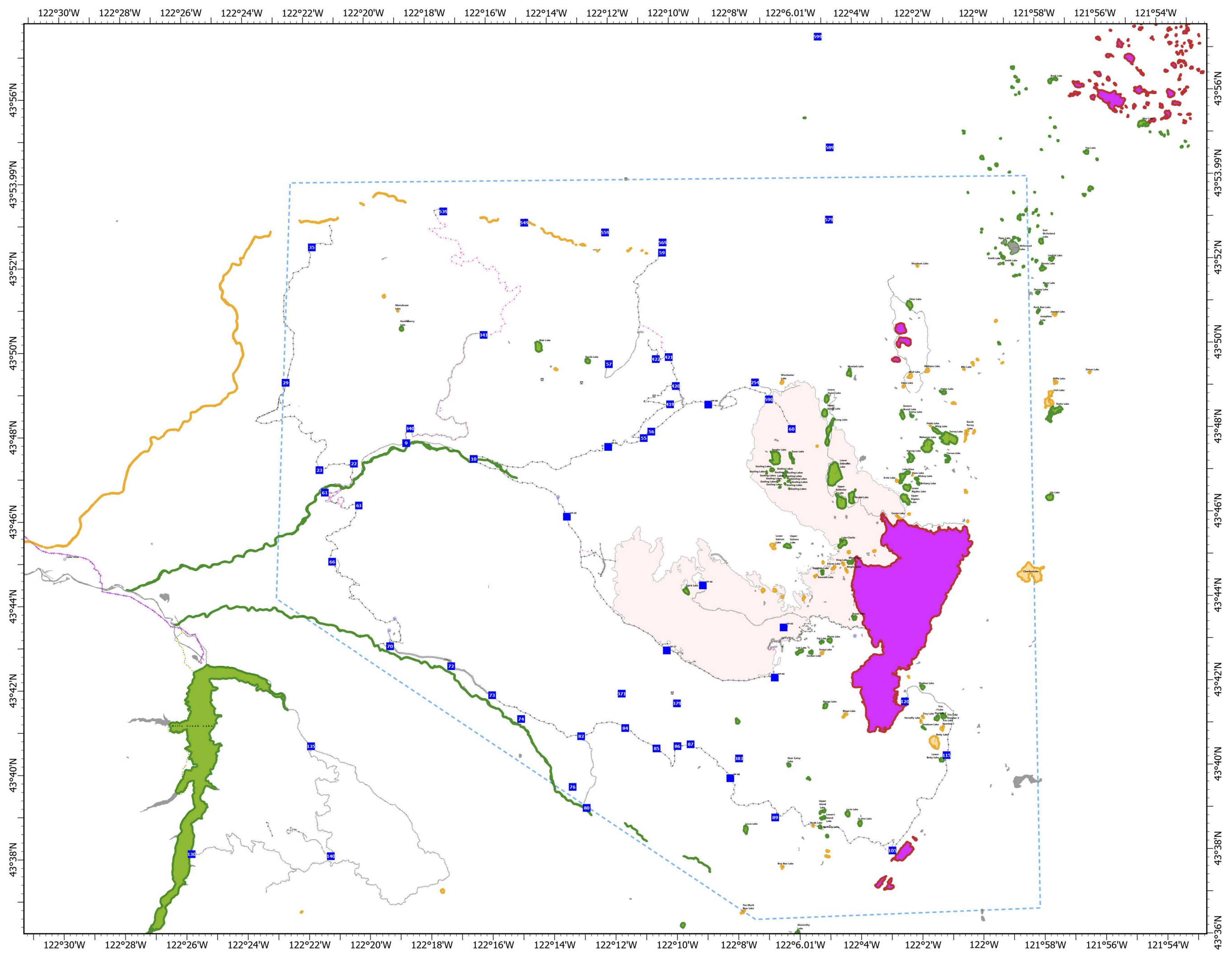
16,304 acres at 9/02/2022 @ 2134

0 0.5 1 2  
Miles

- YES
- NO
- Read Approve
- <all other values>
- Helibase
- Drop Point
- Lookout
- Water Source
- Completed Dozer Line
- Completed Hand Line
- Completed Road as Line
- Planned Dozer Line
- Planned Hand Line
- Planned Road as Line
- Access or Improved Road
- Highlighted Feature
- Other
- Repair Line
- Aerial Hazard
- Temporary Flight Restriction
- Wildfire Daily Fire Perimeter



NW6  
09/03/2022 2159  
Acres determined from IR  
North American 1983 Datum. LatLong Grid



FeatureCat	Label	ElevationF	LatWGS84_D	LongWGS84_
Dip Site	Spirit	5077	43° 44.253' N	122° 09.599' W
Dip Site	Last	5464	43° 42.781' N	122° 05.924' W
Dip Site	Cardiac	5547	43° 42.764' N	122° 05.551' W
Dip Site	Fig	5552	43° 43.012' N	122° 05.198' W
Dip Site	Photo	5509	43° 43.045' N	122° 04.933' W
Dip Site	Sapphire	5680	43° 44.660' N	122° 05.148' W
Dip Site	Upper Salmon	4837	43° 45.295' N	122° 06.280' W
Dip Site	Hills Creek	1547	43° 41.223' N	122° 25.562' W
Dip Site	Moolack	4366	43° 49.371' N	122° 04.206' W
Dip Site	Lower Quinn	4677	43° 48.761' N	122° 04.947' W
Dip Site	Bongo	4951	43° 41.489' N	122° 05.105' W
Dip Site	Quarry	2858	43° 40.642' N	122° 22.895' N
Dip Site	Arrow	4845	43° 41.410' N	122° 07.949' W
Dip Site	Black	3053	43° 42.949' N	122° 10.429' W
Dip Site	Lilly Dip	4774	43° 47.345' N	122° 08.623' W
Dip Site	Gander Dip	4811	43° 47.375' N	122° 06.634' W
Dip Site	Devil's Dip	4774	43° 49.700' N	122° 12.747' W
Drop Point	DP-20	2400	43° 46.036' N	122° 13.474' W
Drop Point	DP-40	5027	43° 44.335' N	122° 08.991' W
Drop Point	10	1980	43° 47.424' N	122° 16.503' W
Drop Point	60	5458	43° 48.062' N	122° 06.099' W
Drop Point	DP-90	3362	43° 42.165' N	122° 06.732' W
Drop Point	120	5445	43° 41.577' N	122° 02.500' W
Drop Point	61	1622	43° 46.655' N	122° 21.392' W
Drop Point	66	3330	43° 45.018' N	122° 21.170' W
Drop Point	63	2484	43° 46.345' N	122° 20.277' W
Drop Point	70	1914	43° 43.004' N	122° 19.286' W
Drop Point	22	2036	43° 47.338' N	122° 20.433' W
Drop Point	23	2642	43° 47.189' N	122° 21.562' W
Drop Point	29	2514	43° 49.267' N	122° 22.647' W
Drop Point	105	4911	43° 38.048' N	122° 02.963' W
Drop Point	115	5541	43° 40.292' N	122° 01.161' W
Drop Point	80	2593	43° 39.132' N	122° 12.917' W
Drop Point	82	3345	43° 40.832' N	122° 13.075' W
Drop Point	84	3840	43° 41.016' N	122° 11.634' W
Drop Point	85	4191	43° 40.525' N	122° 10.620' W
Drop Point	86	4697	43° 40.575' N	122° 09.937' W
Drop Point	379	5048	43° 41.589' N	122° 09.941' W
Drop Point	DP-88	5431	43° 39.802' N	122° 08.223' W
Drop Point	381	5830	43° 40.269' N	122° 07.932' W

FeatureCat	Label	ElevationF	LatWGS84_D	LongWGS84_
Drop Point	89	6166	43° 38.861' N	122° 06.774' W
Drop Point	DP-54	3073	43° 47.681' N	122° 12.104' W
Drop Point	35	2368	43° 52.469' N	122° 21.755' W
Drop Point	DP-58	3858	43° 48.660' N	122° 08.817' W
Drop Point	55	3315	43° 47.881' N	122° 10.937' W
Drop Point	56	3423	43° 48.033' N	122° 10.690' W
Drop Point	72	2056	43° 42.519' N	122° 17.296' W
Drop Point	74	2207	43° 41.253' N	122° 15.029' W
Drop Point	371	4918	43° 41.831' N	122° 11.740' W
Drop Point	57	4422	43° 49.642' N	122° 12.056' W
Drop Point	59	2494	43° 52.270' N	122° 10.281' W
Drop Point	DP-37	3029	43° 42.845' N	122° 10.253' W
Drop Point	9	1842	43° 47.814' N	122° 18.703' W
Drop Point	340	2040	43° 48.159' N	122° 18.573' W
Drop Point	341	4348	43° 50.362' N	122° 16.142' W
Drop Point	419	4018	43° 48.676' N	122° 10.065' W
Drop Point	420	4956	43° 49.108' N	122° 09.873' W
Drop Point	421	5112	43° 49.795' N	122° 10.094' W
Drop Point	422	4958	43° 49.751' N	122° 10.519' W
Drop Point	590	5008	43° 48.768' N	122° 06.833' W
Drop Point	254	5127	43° 49.173' N	122° 07.281' W
Drop Point	87	4828	43° 40.616' N	122° 09.508' W
Drop Point	76	2563	43° 39.632' N	122° 13.370' W
Drop Point	140	4056	43° 38.040' N	122° 21.287' W
Drop Point	130	1568	43° 38.111' N	122° 25.827' W
Drop Point	73	2234	43° 41.823' N	122° 15.968' W
Drop Point	135	1717	43° 40.648' N	122° 21.906' W
Drop Point	DP-95	5639	43° 43.350' N	122° 06.433' W
Drop Point	599	2575	43° 57.351' N	122° 05.108' W
Drop Point	549	2228	43° 53.012' N	122° 14.779' W
Drop Point	569	2491	43° 52.514' N	122° 10.258' W
Drop Point	539	2110	43° 53.296' N	122° 17.426' W
Drop Point	589	3734	43° 54.723' N	122° 04.754' W
Drop Point	579	2867	43° 53.012' N	122° 04.805' W
Drop Point	559	2480	43° 52.763' N	122° 12.137' W
Helibase	Cedar Creek	1383	43° 45.120' N	122° 29.908' W
Helispot	2	5807	43° 42.010' N	122° 10.954' W
Helispot	3	5581	43° 46.825' N	122° 07.829' W
Helispot	H-89	6166	43° 38.861' N	122° 06.774' W
Helispot	66	3557	43° 45.063' N	122° 20.985' W

FeatureCat	Label	ElevationF	LatWGS84_D	LongWGS84_
Helispot	H-4	5125	43° 49.062' N	122° 06.953' W
Helispot	15	4859	43° 38.476' N	122° 22.063' W
Helispot	1	4150	43° 46.502' N	122° 12.005' W
Helispot	H-5	5730	43° 43.362' N	122° 04.928' W
Helispot	H-40	5027	43° 44.335' N	122° 08.991' W
Helispot	H-95	5639	43° 43.342' N	122° 06.434' W
Helispot	6	2477	43° 52.763' N	122° 12.137' W
Helispot	7	3688	43° 54.663' N	122° 04.725' W
Lookout		4878	43° 41.834' N	122° 10.089' W
Lookout		3046	43° 47.659' N	122° 12.107' W
Lookout		4540	43° 48.875' N	122° 10.586' W
Lookout		4907	43° 49.101' N	122° 09.973' W
Lookout		5181	43° 49.293' N	122° 14.242' W
Lookout		5251	43° 54.025' N	122° 11.439' W
Lookout		5110	43° 49.169' N	122° 07.312' W
Lookout		0	43° 49.206' N	122° 12.953' W
Value at Risk	Waldo Mt Lookout	6341	43° 45.913' N	122° 05.934' W
Value at Risk	Taylor Burn Guard Station	5223	43° 48.803' N	122° 01.967' W
Value at Risk	Joe Goddard Interpretive Site	3145	43° 42.080' N	122° 08.611' W
Value at Risk		2277	43° 47.336' N	122° 14.184' W
Value at Risk		2163	43° 47.196' N	122° 15.284' W
Value at Risk		2500	43° 49.006' N	122° 22.753' W
Value at Risk		2502	43° 49.040' N	122° 22.710' W
Value at Risk		5569	43° 49.352' N	122° 13.147' W
Value at Risk		5449	43° 42.328' N	122° 04.073' W
Value at Risk		5388	43° 38.176' N	122° 03.355' W
Value at Risk		5840	43° 38.632' N	122° 05.074' W
Value at Risk		0	43° 42.569' N	122° 09.589' W
Value at Risk		0	43° 42.169' N	122° 08.676' W
Value at Risk		5558	43° 48.401' N	121° 58.884' W
Value at Risk		5358	43° 48.644' N	122° 01.260' W
Value at Risk		5358	43° 48.636' N	122° 01.348' W
Value at Risk		0	43° 45.797' N	122° 02.103' W
Water Source		2275	43° 46.505' N	122° 13.757' W
Water Source		4791	43° 35.210' N	122° 02.038' W
Water Source		1582	43° 46.718' N	122° 21.488' W
Water Source		5432	43° 39.847' N	122° 08.157' W
Water Source		2368	43° 43.660' N	122° 19.130' W
Water Source		2081	43° 43.380' N	122° 19.310' W
Water Source		0	43° 43.14497196' N	122° 04.10998944' W