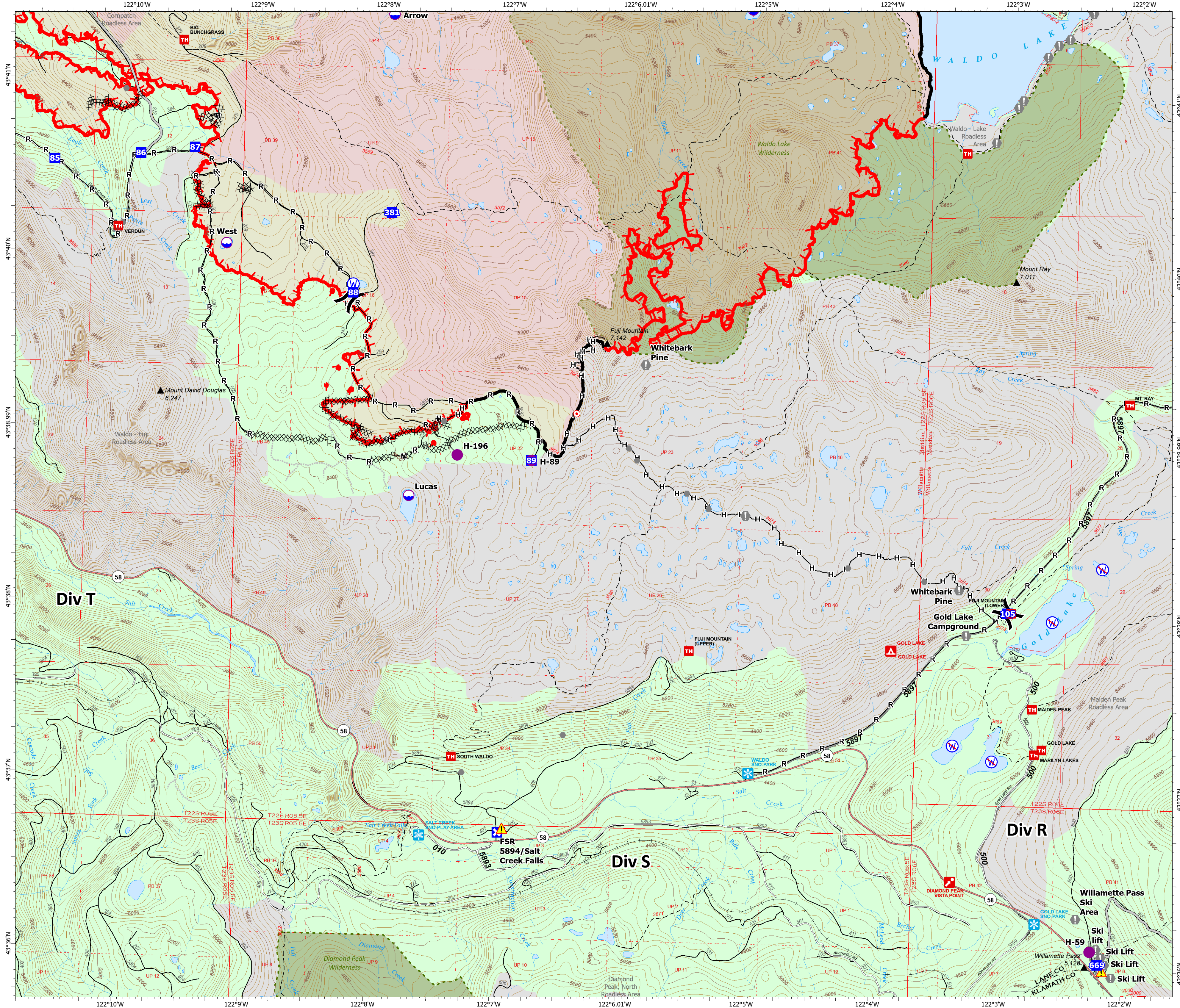


Div S

Cedar Creek
OR-WIF-220180
10/20/2022 24 Hour

126,222 acres at 10/18/2022 @ 1815

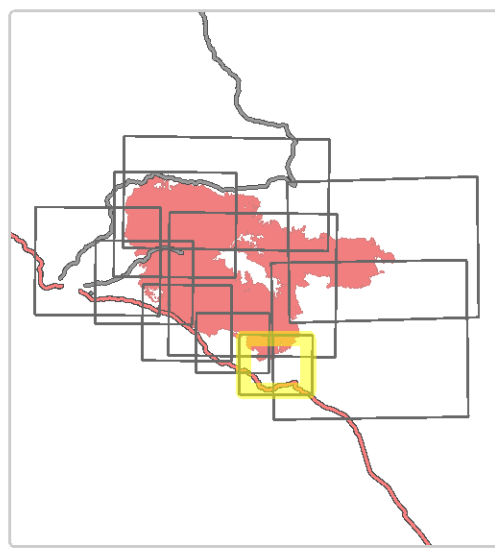
- Dip Site
- Helispot
- Division Break
- Drop Point
- Closure
- Hot Spot - Spot Fire
- Value at Risk
- Other
- Hazard
- Water Source
- Restricted Water Source
- Completed Dozer Line
- Completed Hand Line
- Completed Mixed Construction Line
- Completed Road as Line
- Access or Improved Road
- Other
- Paved Road
- Gravel Road
- Unimproved Roads
- Closed Roads
- Contained
- Uncontained
- Wildfire Daily Fire Perimeter
- Forest Service Land
- Wilderness
- Roadless Area



Div T

Div S

Div R



0 1:24,000 0.5
Miles

map exported at 10/19/2022 2112 hrs