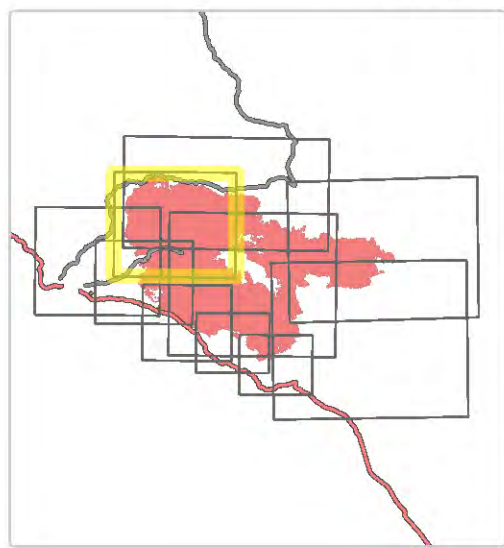


Div Y

Cedar Creek
OR-WIF-220180
10/20/2022 24 Hour

126,222 acres at 10/18/2022 @ 1815

- Dip Site
- Helispot
- Division Break
- Drop Point
- Closure
- Lookout
- Value at Risk
- Other
- Internet Access
- Repeater
- Hazard
- Water Source
- Completed Dozer Line
- Completed Fuel Break
- Completed Hand Line
- Completed Mixed Construction Line
- Completed Road as Line
- Planned Dozer Line
- Access or Improved Road
- Highlighted Feature
- Paved Road
- Gravel Road
- Unimproved Roads
- Closed Roads
- Interior Roads
- Contained
- Uncontained
- Wildfire Daily Fire Perimeter
- Forest Service Land
- Wilderness
- Roadless Area



0 1:40,000 1.5
Miles

map exported at 10/19/2022 2113 hrs

