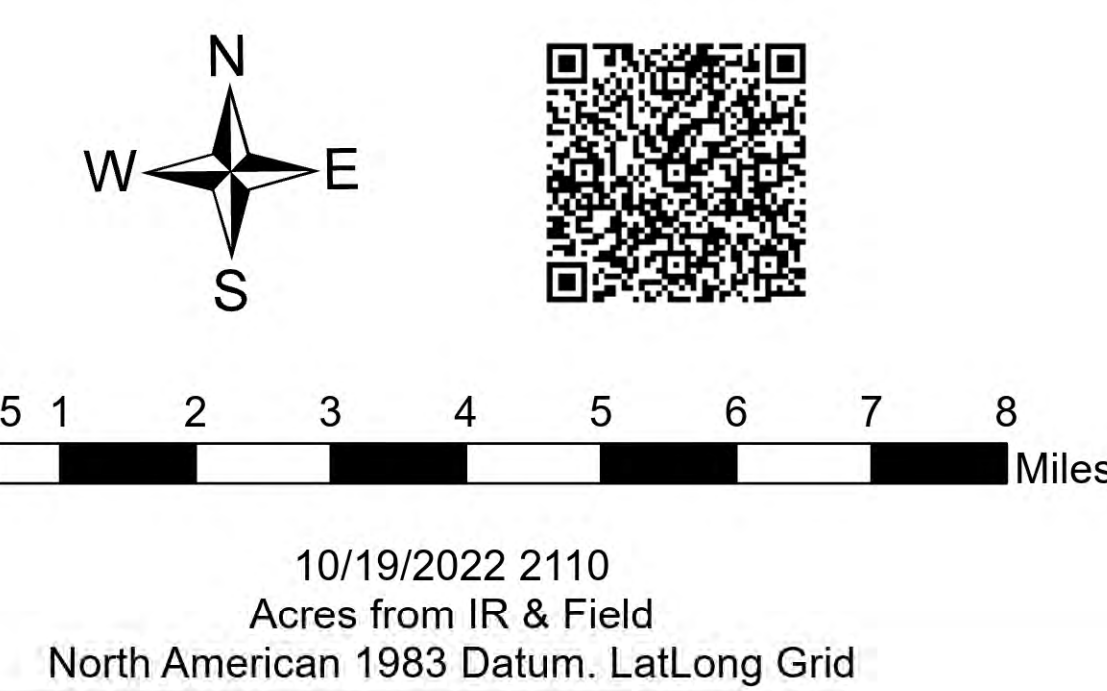


**BRIEFING**  
 Cedar Creek  
 OR-WIF-220180  
 10/20/2022 24 Hour  
 126,222 acres at 10/18/2022 @ 1815  
 Acres determined from IR



10/19/2022 2110  
 Acres from IR & Field  
 North American 1983 Datum, Lat,Long Grid

- |   |  |  |  |   |  |
|---|--|--|--|---|--|
| <ul style="list-style-type: none"> <li>Other Property</li> <li>Water Tank</li> <li>Helispot</li> <li>Helibase</li> <li>Unimproved Landing Area</li> <li>Division Break</li> <li>Incident Command Post</li> <li>Drop Point</li> <li>Closure</li> <li>Camp</li> <li>Staging Area</li> </ul> | <ul style="list-style-type: none"> <li>Lookout</li> <li>Hot Spot - Spot Fire</li> <li>Restricted Water Source</li> <li>Value at Risk</li> <li>Landmark</li> <li>Gate</li> <li>Bridge</li> <li>Mobile Weather Unit</li> <li>Internet Access</li> <li>Repeater</li> <li>Safety Zone</li> </ul> | <ul style="list-style-type: none"> <li>Hazard</li> <li>Water Source</li> <li>Completed Dozer Line</li> <li>Completed Fuel Break</li> <li>Completed Hand Line</li> <li>Completed Mixed Construction Line</li> <li>Planned Dozer Line</li> </ul> | <ul style="list-style-type: none"> <li>Planned Hand Line</li> <li>Planned Road as Line</li> <li>Access or Improved Road</li> <li>Highlighted Feature</li> <li>Road Repair</li> <li>Escape Route</li> <li>Aerial Hazard</li> <li>UAS Launch and Recovery Zone</li> <li>Temporary Flight Restriction</li> <li>Initial Attack Boundary</li> </ul> | <ul style="list-style-type: none"> <li>National Trails</li> <li>Trail</li> <li>National Designated Trail</li> <li>Primary Highway</li> <li>Secondary Highway</li> <li>Paved Roads</li> <li>Dirt (Not Paved)</li> <li>Paved Road</li> <li>Gravel Road</li> <li>Dirt Roads</li> <li>Unimproved Roads</li> </ul> | <ul style="list-style-type: none"> <li>Unspecified</li> <li>Closed Roads</li> <li>Area of Critical Environmental Concern, BLM</li> <li>Special Management Boundary</li> <li>Wild and Scenic River</li> <li>Forest Service Land</li> <li>Wilderness</li> <li>Wildfire Daily Fire Perimeter</li> </ul> |
|---|--|--|--|---|--|