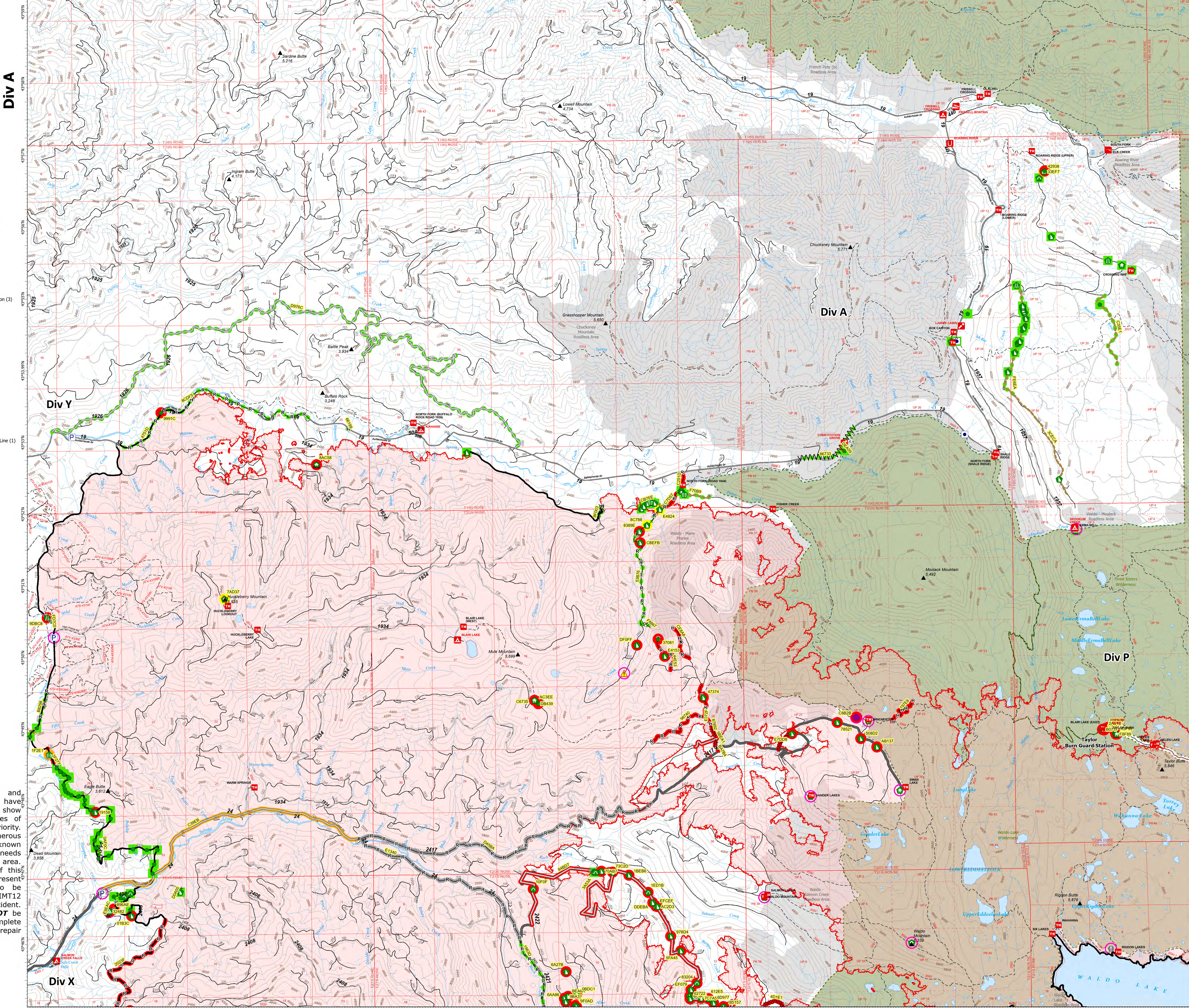


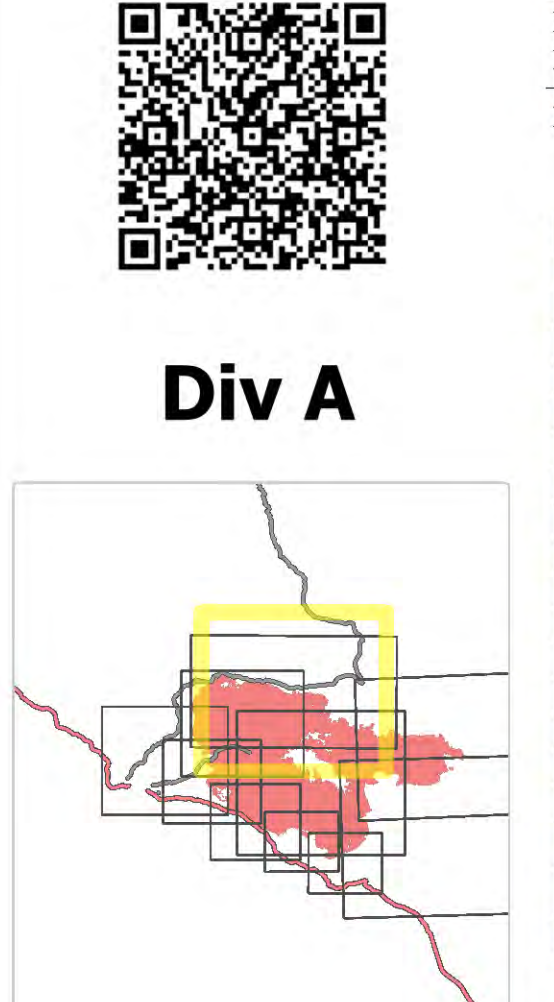
Suppression Repair Tiles

Cedar Creek
OR-WF-220180
10/20/2022 24 Hour
1:26,222 acres at 10/19/2022 @ 09:15
1:11,100,000



- Accountable Property - Repair Status
- In Use - Fire Management (3)
 - Completed - Inspected (1)
- Accountable Property
- Other Property (3)
 - Pump (3)
 - In Use - Fire Management (9)
 - Repair Needed (55)
 - In Progress (2)
 - Completed - Ready for Inspection (3)
 - Completed - Inspected (78)
 - No Repair Needed (2)
- Hotspot (1)
- Value at Risk (1)
 - Other (1)
 - Structure Wrap (19)
 - Stream Crossing (3)
 - Road Repair (3)
 - Repair Rate (49)
 - Landing or Log Deck (3)
 - Dozer Path (55)
 - Culvert (13)
 - Hazard (1)
- Completed Dozer Line (9)
- Completed Fuel Break (2)
- Completed Hand Line (15)
- M - Completed Mow Construction Line (1)
- R - Completed Road as Line (12)
- Access or Improved Road (5)
- Repair Line (1)
- Road Repair (5)
- Repair Needed (20)
- In Progress (1)
- Completed - Inspected (25)
- No Repair Needed (1)
- Other - See Comments (2)
- Contained
- Uncountained
- Wildfire Daily Fire Perimeter
- Interior/Roads
- Paved Roads
 - Dirt (Not Paved)
 - Paved Road
 - Gravel Road
 - Unimproved Roads
 - Closed Roads
 - Roads
 - Wilderness
 - Roadless Area

Note: This map and associated tables have been filtered to only show Repair Points / Lines of Medium or High priority. There exists numerous other features of unknown or low priority repair needs throughout the fire area. The intended use of this map is to define/represent the repair work to be completed during IMT12 oversight of this incident. This map should **NOT** be considered a complete source for repair information.



Repair ID	Priority	Point Type	Status	Repairs Needed	Repair Comments	Latitude	Longitude
E1001	High	Landing or Log Deck	Repair Needed	Repair with vegetation and fuel. Check depth and condition on site for repair. Check for any other structures in area.	Repair with vegetation and fuel. Check depth and condition on site for repair. Check for any other structures in area.	43° 46.42' N	122° 06.94' W
E1002	High	Stream Crossing	Repair Needed	Remove debris in creek. Check for any other structures in area.	Remove debris in creek. Check for any other structures in area.	43° 46.32' N	122° 11.02' W
E1003	High	Stream Crossing	In Progress	Full repair.	Full repair.	43° 46.64' N	122° 22.67' W
E1004	High	Stream Crossing	Repair Needed	Remove debris in creek. Check for any other structures in area.	Remove debris in creek. Check for any other structures in area.	43° 46.64' N	122° 22.67' W
E1005	High	Stream Crossing	Repair Needed	Remove debris in creek. Check for any other structures in area.	Remove debris in creek. Check for any other structures in area.	43° 46.64' N	122° 22.67' W

Repair ID	Priority	Point Type	Status	Repairs Needed	Repair Comments	Latitude	Longitude
E1006	High	Stream Crossing	Repair Needed	Remove debris in creek. Check for any other structures in area.	Remove debris in creek. Check for any other structures in area.	43° 46.32' N	122° 11.02' W
E1007	High	Stream Crossing	Repair Needed	Remove debris in creek. Check for any other structures in area.	Remove debris in creek. Check for any other structures in area.	43° 46.32' N	122° 11.02' W
E1008	High	Stream Crossing	Repair Needed	Remove debris in creek. Check for any other structures in area.	Remove debris in creek. Check for any other structures in area.	43° 46.32' N	122° 11.02' W
E1009	High	Stream Crossing	Repair Needed	Remove debris in creek. Check for any other structures in area.	Remove debris in creek. Check for any other structures in area.	43° 46.32' N	122° 11.02' W
E1010	High	Stream Crossing	Repair Needed	Remove debris in creek. Check for any other structures in area.	Remove debris in creek. Check for any other structures in area.	43° 46.32' N	122° 11.02' W

Repair ID	Priority	Point Type	Status	Repairs Needed	Repair Comments	Latitude	Longitude
E1011	High	Stream Crossing	Repair Needed	Remove debris in creek. Check for any other structures in area.	Remove debris in creek. Check for any other structures in area.	43° 46.32' N	122° 11.02' W
E1012	High	Stream Crossing	Repair Needed	Remove debris in creek. Check for any other structures in area.	Remove debris in creek. Check for any other structures in area.	43° 46.32' N	122° 11.02' W
E1013	High	Stream Crossing	Repair Needed	Remove debris in creek. Check for any other structures in area.	Remove debris in creek. Check for any other structures in area.	43° 46.32' N	122° 11.02' W
E1014	High	Stream Crossing	Repair Needed	Remove debris in creek. Check for any other structures in area.	Remove debris in creek. Check for any other structures in area.	43° 46.32' N	122° 11.02' W
E1015	High	Stream Crossing	Repair Needed	Remove debris in creek. Check for any other structures in area.	Remove debris in creek. Check for any other structures in area.	43° 46.32' N	122° 11.02' W