

Suppression Repair Tiles

Cedar Creek
OR-WF-2022-24 Hour
10/20/2022 24 Hour
126,222 acres as of 10/19/2022 @ 9:15
1:1,100,000

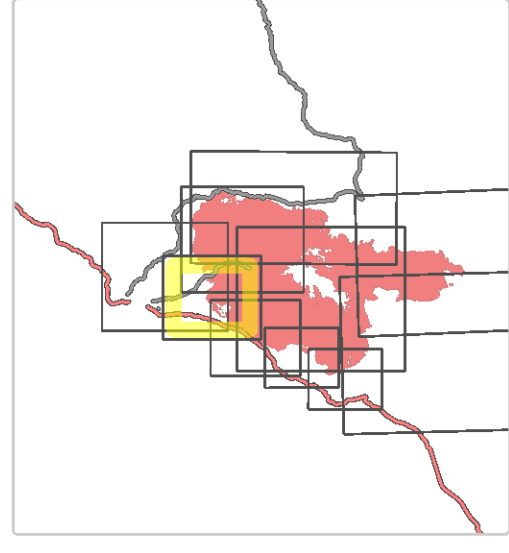
Div X

- Accountable Property - Repair Status
- In Use - Fire Management (3)
- Accountable Property
- Pump (2)
 - Water Tank (1)
 - In Use - Fire Management (3)
 - Needs Assessment (1)
 - Repair Needed (9)
 - In Progress (1)
 - Completed - Inspected (50)
 - No Repair Needed (1)
 - Other - See Comments (1)
 - Other (1)
 - Water Development or Draft Site (1)
 - Stream Crossing (10)
 - Repair Point (39)
 - Landing or Log Deck (2)
 - Dozer Push (3)
 - Culvert (9)
 - Water Source (1)
- Completed Dozer Line (7)
- Completed Fuel Break (1)
- Completed Hand Line (1)
- M - Completed Mixed Construction Line (1)
- R - Completed Road as Line (3)
- Access or Improved Road (1)
- In Use - Fire Management (1)
- Repair Needed (2)
- In Progress (1)
- Completed - Inspected (6)
- Other - See Comments (4)
- Contained
- Uncontained
- Wildfire Daily Fire Perimeter
- Interior Roads
- Secondary Highway
- Paved Roads
- Dirt (Not Paved)
- Paved Road
- Gravel Road
- Unimproved Roads
- Closed Roads
- Roads
- Roadless Area

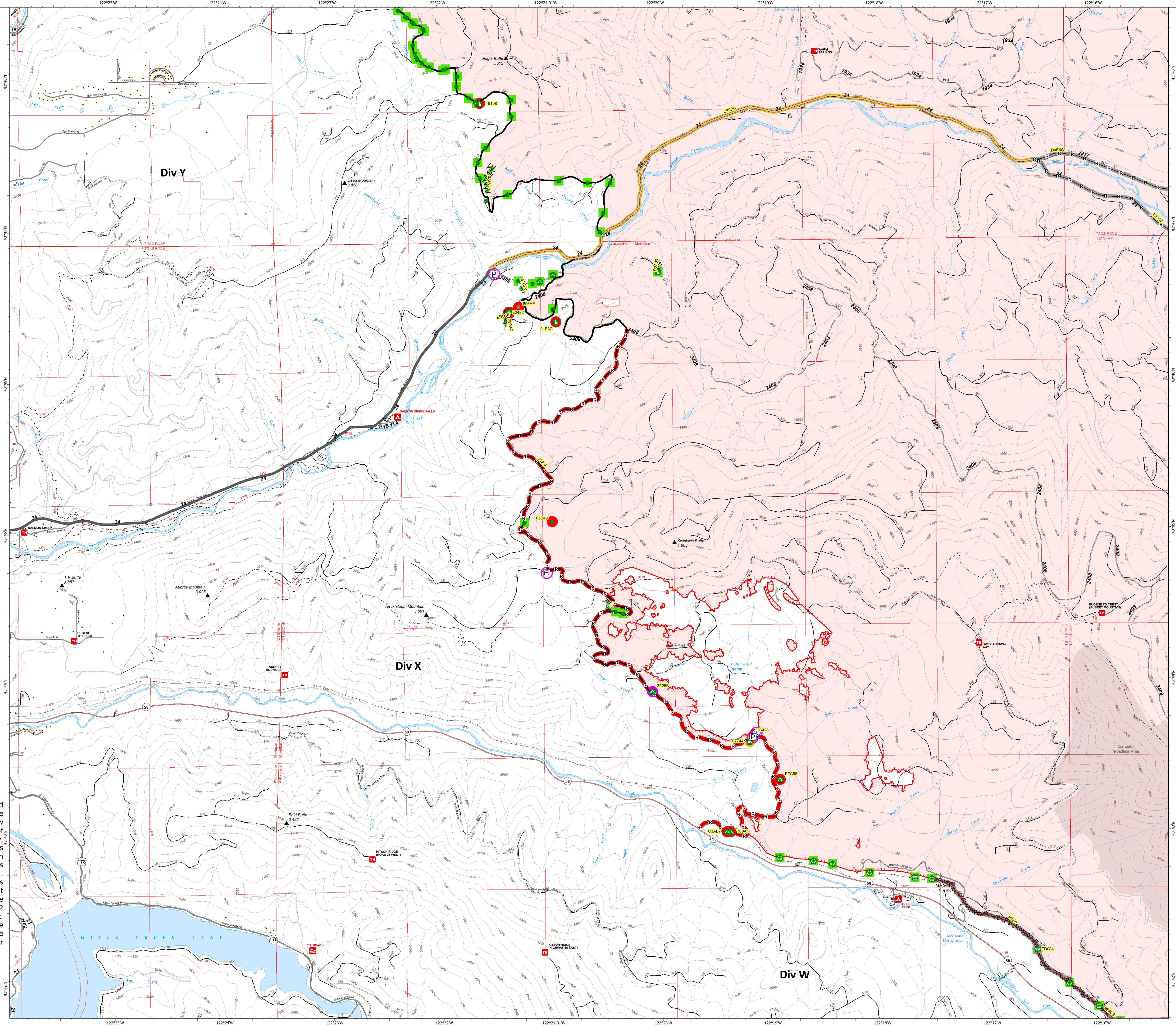
Note: This map and associated tables have been filtered to only show Repair Points / Lines of Medium or High priority. There exists numerous other features of unknown or low priority repair needs throughout the fire area. The intended use of this map is to define/represent the repair work to be completed during IMT12 oversight of this incident. This map should **NOT** be considered a complete source for repair information.



Div X



0 0.5 Miles
map exported at 10/19/2022 21:11



Repair ID	Priority	Point Type	Status	Repairs Needed	Repair Comments	Latitude	Longitude
2340	High	Landing or Log Deck	Repair Needed	Re-work and clear debris from site. Site located on a steep slope with a high risk of erosion. Repair needed to stabilize site and prevent erosion. Repair ID: 2340	Repair ID: 2340 - Clear and compact, remove slash.	43° 46.402' N	122° 19.207' W
2341	High	Other	Repair Needed	Re-work and clear debris from site. Site located on a steep slope with a high risk of erosion. Repair needed to stabilize site and prevent erosion. Repair ID: 2341	Repair ID: 2341 - Clear and compact, remove slash.	43° 46.402' N	122° 19.207' W
2342	Medium	Culvert	Repair Needed	Clear debris and compact. Repair needed to stabilize site and prevent erosion. Repair ID: 2342	Repair ID: 2342 - Clear and compact, remove slash and debris from the site.	43° 46.402' N	122° 19.207' W
2343	Medium	Culvert	Repair Needed	Clear debris and compact. Repair needed to stabilize site and prevent erosion. Repair ID: 2343	Repair ID: 2343 - Clear and compact, remove slash and debris from the site.	43° 46.402' N	122° 19.207' W
2344	Medium	Culvert	Repair Needed	Clear debris and compact. Repair needed to stabilize site and prevent erosion. Repair ID: 2344	Repair ID: 2344 - Clear and compact, remove slash and debris from the site.	43° 46.402' N	122° 19.207' W
2345	Medium	Culvert	Repair Needed	Clear debris and compact. Repair needed to stabilize site and prevent erosion. Repair ID: 2345	Repair ID: 2345 - Clear and compact, remove slash and debris from the site.	43° 46.402' N	122° 19.207' W
2346	Medium	Culvert	Repair Needed	Clear debris and compact. Repair needed to stabilize site and prevent erosion. Repair ID: 2346	Repair ID: 2346 - Clear and compact, remove slash and debris from the site.	43° 46.402' N	122° 19.207' W
2347	Medium	Culvert	Repair Needed	Clear debris and compact. Repair needed to stabilize site and prevent erosion. Repair ID: 2347	Repair ID: 2347 - Clear and compact, remove slash and debris from the site.	43° 46.402' N	122° 19.207' W
2348	Medium	Culvert	Repair Needed	Clear debris and compact. Repair needed to stabilize site and prevent erosion. Repair ID: 2348	Repair ID: 2348 - Clear and compact, remove slash and debris from the site.	43° 46.402' N	122° 19.207' W
2349	Medium	Culvert	Repair Needed	Clear debris and compact. Repair needed to stabilize site and prevent erosion. Repair ID: 2349	Repair ID: 2349 - Clear and compact, remove slash and debris from the site.	43° 46.402' N	122° 19.207' W
2350	Medium	Culvert	Repair Needed	Clear debris and compact. Repair needed to stabilize site and prevent erosion. Repair ID: 2350	Repair ID: 2350 - Clear and compact, remove slash and debris from the site.	43° 46.402' N	122° 19.207' W
2351	Medium	Culvert	Repair Needed	Clear debris and compact. Repair needed to stabilize site and prevent erosion. Repair ID: 2351	Repair ID: 2351 - Clear and compact, remove slash and debris from the site.	43° 46.402' N	122° 19.207' W
2352	Medium	Culvert	Repair Needed	Clear debris and compact. Repair needed to stabilize site and prevent erosion. Repair ID: 2352	Repair ID: 2352 - Clear and compact, remove slash and debris from the site.	43° 46.402' N	122° 19.207' W
2353	Medium	Culvert	Repair Needed	Clear debris and compact. Repair needed to stabilize site and prevent erosion. Repair ID: 2353	Repair ID: 2353 - Clear and compact, remove slash and debris from the site.	43° 46.402' N	122° 19.207' W
2354	Medium	Culvert	Repair Needed	Clear debris and compact. Repair needed to stabilize site and prevent erosion. Repair ID: 2354	Repair ID: 2354 - Clear and compact, remove slash and debris from the site.	43° 46.402' N	122° 19.207' W
2355	Medium	Culvert	Repair Needed	Clear debris and compact. Repair needed to stabilize site and prevent erosion. Repair ID: 2355	Repair ID: 2355 - Clear and compact, remove slash and debris from the site.	43° 46.402' N	122° 19.207' W
2356	Medium	Culvert	Repair Needed	Clear debris and compact. Repair needed to stabilize site and prevent erosion. Repair ID: 2356	Repair ID: 2356 - Clear and compact, remove slash and debris from the site.	43° 46.402' N	122° 19.207' W
2357	Medium	Culvert	Repair Needed	Clear debris and compact. Repair needed to stabilize site and prevent erosion. Repair ID: 2357	Repair ID: 2357 - Clear and compact, remove slash and debris from the site.	43° 46.402' N	122° 19.207' W
2358	Medium	Culvert	Repair Needed	Clear debris and compact. Repair needed to stabilize site and prevent erosion. Repair ID: 2358	Repair ID: 2358 - Clear and compact, remove slash and debris from the site.	43° 46.402' N	122° 19.207' W
2359	Medium	Culvert	Repair Needed	Clear debris and compact. Repair needed to stabilize site and prevent erosion. Repair ID: 2359	Repair ID: 2359 - Clear and compact, remove slash and debris from the site.	43° 46.402' N	122° 19.207' W
2360	Medium	Culvert	Repair Needed	Clear debris and compact. Repair needed to stabilize site and prevent erosion. Repair ID: 2360	Repair ID: 2360 - Clear and compact, remove slash and debris from the site.	43° 46.402' N	122° 19.207' W

Div X ID	Priority	Line Type	Status	Repairs Needed	Repair Comments	Len (ft)
2361	High	Access or Improved Road	In Progress	Old Dangle Road, Clear (1800)	Need to access all other repair work on 2361, 2362, 2363, 2364. Requires 1500 lbs of fuel and 1000 lbs of slash.	2000
2362	High	Completed Dozer Line	Completed - Inspected	Full repair done, site is clear and back from erosion. Repair needed to stabilize site and prevent erosion. Repair ID: 2362	Full repair done, site is clear and back from erosion. Repair needed to stabilize site and prevent erosion. Repair ID: 2362	2000
2363	High	Completed Hand Line	Completed - Inspected	Full repair done, site is clear and back from erosion. Repair needed to stabilize site and prevent erosion. Repair ID: 2363	Full repair done, site is clear and back from erosion. Repair needed to stabilize site and prevent erosion. Repair ID: 2363	2000
2364	High	Completed Hand Line	Completed - Inspected	Full repair done, site is clear and back from erosion. Repair needed to stabilize site and prevent erosion. Repair ID: 2364	Full repair done, site is clear and back from erosion. Repair needed to stabilize site and prevent erosion. Repair ID: 2364	2000
2365	High	Completed Hand Line	Completed - Inspected	Full repair done, site is clear and back from erosion. Repair needed to stabilize site and prevent erosion. Repair ID: 2365	Full repair done, site is clear and back from erosion. Repair needed to stabilize site and prevent erosion. Repair ID: 2365	2000
2366	Medium	Completed Dozer Line	Completed - Inspected	Full repair done, site is clear and back from erosion. Repair needed to stabilize site and prevent erosion. Repair ID: 2366	Full repair done, site is clear and back from erosion. Repair needed to stabilize site and prevent erosion. Repair ID: 2366	2000
2367	Medium	Completed Dozer Line	Completed - Inspected	Full repair done, site is clear and back from erosion. Repair needed to stabilize site and prevent erosion. Repair ID: 2367	Full repair done, site is clear and back from erosion. Repair needed to stabilize site and prevent erosion. Repair ID: 2367	2000
2368	Medium	Completed Dozer Line	Completed - Inspected	Full repair done, site is clear and back from erosion. Repair needed to stabilize site and prevent erosion. Repair ID: 2368	Full repair done, site is clear and back from erosion. Repair needed to stabilize site and prevent erosion. Repair ID: 2368	2000
2369	Medium	Completed Dozer Line	Completed - Inspected	Full repair done, site is clear and back from erosion. Repair needed to stabilize site and prevent erosion. Repair ID: 2369	Full repair done, site is clear and back from erosion. Repair needed to stabilize site and prevent erosion. Repair ID: 2369	2000
2370	Medium	Completed Dozer Line	Completed - Inspected	Full repair done, site is clear and back from erosion. Repair needed to stabilize site and prevent erosion. Repair ID: 2370	Full repair done, site is clear and back from erosion. Repair needed to stabilize site and prevent erosion. Repair ID: 2370	2000
2371	Medium	Completed Dozer Line	Completed - Inspected	Full repair done, site is clear and back from erosion. Repair needed to stabilize site and prevent erosion. Repair ID: 2371	Full repair done, site is clear and back from erosion. Repair needed to stabilize site and prevent erosion. Repair ID: 2371	2000
2372	Medium	Completed Dozer Line	Completed - Inspected	Full repair done, site is clear and back from erosion. Repair needed to stabilize site and prevent erosion. Repair ID: 2372	Full repair done, site is clear and back from erosion. Repair needed to stabilize site and prevent erosion. Repair ID: 2372	2000
2373	Medium	Completed Dozer Line	Completed - Inspected	Full repair done, site is clear and back from erosion. Repair needed to stabilize site and prevent erosion. Repair ID: 2373	Full repair done, site is clear and back from erosion. Repair needed to stabilize site and prevent erosion. Repair ID: 2373	2000
2374	Medium	Completed Dozer Line	Completed - Inspected	Full repair done, site is clear and back from erosion. Repair needed to stabilize site and prevent erosion. Repair ID: 2374	Full repair done, site is clear and back from erosion. Repair needed to stabilize site and prevent erosion. Repair ID: 2374	2000
2375	Medium	Completed Dozer Line	Completed - Inspected	Full repair done, site is clear and back from erosion. Repair needed to stabilize site and prevent erosion. Repair ID: 2375	Full repair done, site is clear and back from erosion. Repair needed to stabilize site and prevent erosion. Repair ID: 2375	2000
2376	Medium	Completed Dozer Line	Completed - Inspected	Full repair done, site is clear and back from erosion. Repair needed to stabilize site and prevent erosion. Repair ID: 2376	Full repair done, site is clear and back from erosion. Repair needed to stabilize site and prevent erosion. Repair ID: 2376	2000
2377	Medium	Completed Dozer Line	Completed - Inspected	Full repair done, site is clear and back from erosion. Repair needed to stabilize site and prevent erosion. Repair ID: 2377	Full repair done, site is clear and back from erosion. Repair needed to stabilize site and prevent erosion. Repair ID: 2377	2000
2378	Medium	Completed Dozer Line	Completed - Inspected	Full repair done, site is clear and back from erosion. Repair needed to stabilize site and prevent erosion. Repair ID: 2378	Full repair done, site is clear and back from erosion. Repair needed to stabilize site and prevent erosion. Repair ID: 2378	2000
2379	Medium	Completed Dozer Line	Completed - Inspected	Full repair done, site is clear and back from erosion. Repair needed to stabilize site and prevent erosion. Repair ID: 2379	Full repair done, site is clear and back from erosion. Repair needed to stabilize site and prevent erosion. Repair ID: 2379	2000
2380	Medium	Completed Dozer Line	Completed - Inspected	Full repair done, site is clear and back from erosion. Repair needed to stabilize site and prevent erosion. Repair ID: 2380	Full repair done, site is clear and back from erosion. Repair needed to stabilize site and prevent erosion. Repair ID: 2380	2000