

# Suppression Repair Tiles

Cedar Creek  
OR-WF-220180  
10/20/2022 24 Hour  
1:11,100,000  
Div Y

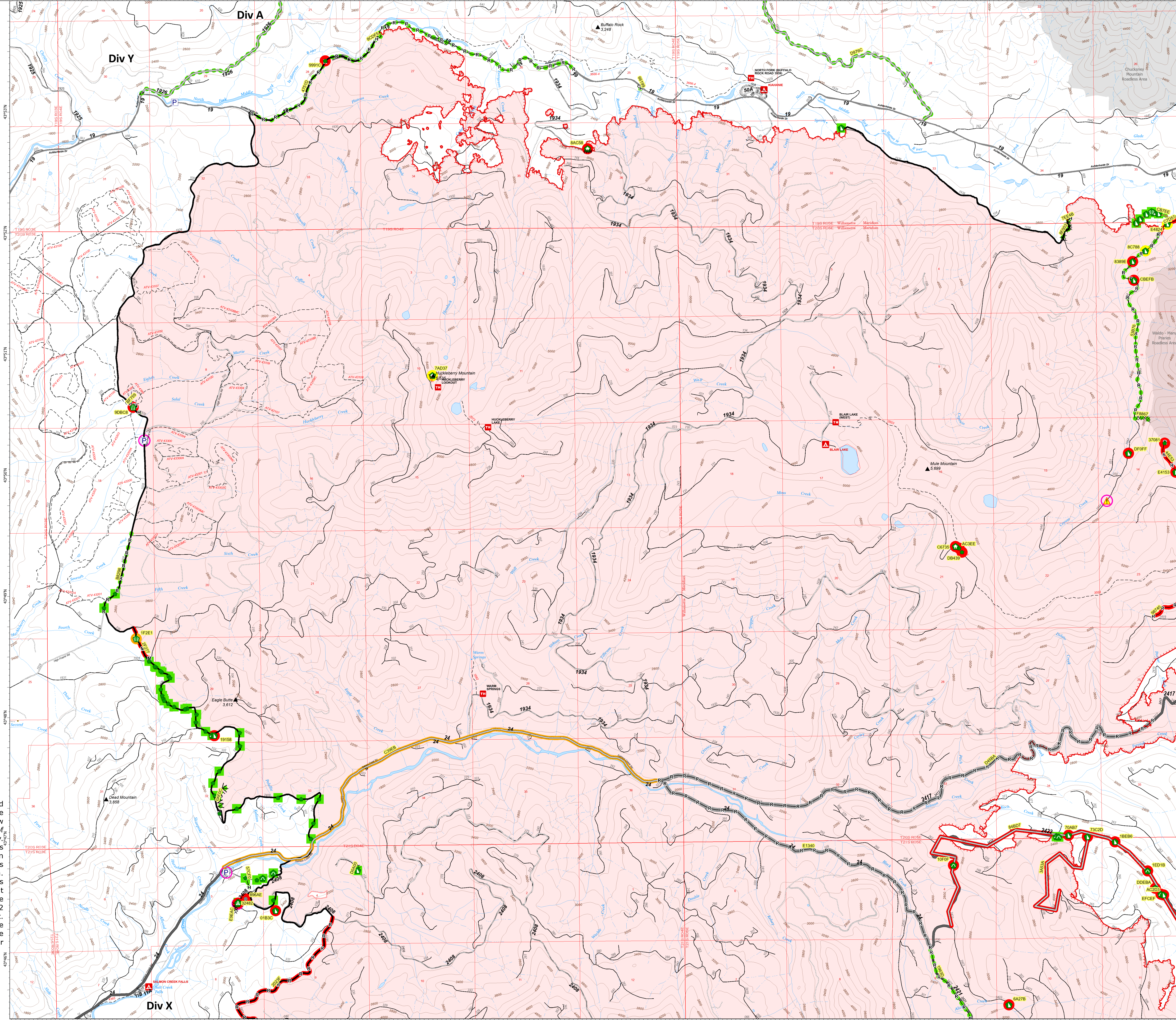
- Accountable Property - Repair Status
- In Use - Fire Management (2)
  - Pump (3)
- Accountable Property
- In Use - Fire Management (2)
  - Repair Needed (24)
  - In Progress (1)
  - Completed - Ready for Inspection (3)
  - Completed - Inspected (46)
  - No Repair Needed (1)
- Other (1)
- Structure Wrap (3)
  - Stream Crossing (2)
  - Road Repair (1)
  - Repair Point (39)
  - Landing or Log Deck (1)
  - Dozer Push (22)
  - Culvert (10)
  - Hazard (1)
- Completed Dozer Line (5)
- Completed Fuel Break (1)
  - Completed Hand Line (8)
  - Completed Mixed Construction Line (1)
  - Completed Road as Line (10)
  - Access or Improved Road (4)
  - Road Repair (1)
- Repair Needed (7)
- In Progress (1)
  - Completed - Inspected (20)
  - Other - See Comments (2)
- Contained
- Uncertain
  - Wildfire Daily Fire Perimeter
  - Interior Roads
  - Paved Roads
  - Dirt (Not Paved)
  - Paved Road
  - Gravel Road
  - Unimproved Roads
  - Closed Roads
  - Roads
  - Roadless Area

**Note:** This map and associated tables have been filtered to only show Repair Points / Lines of Medium or High priority. There exists numerous other features or low priority repair needs throughout the fire area. The intended use of this map is to define/represent the repair work to be completed during IMT12 oversight of this incident. This map should **NOT** be considered a complete source for repair information.



## Div Y

0 0.5 Miles  
Map exported at 10/19/2022 21:10



Repair ID	Priority	Point Type	Status	Repairs Needed	Repair Comments	Latitude	Longitude
810P	High	Culvert	Repair Needed	Clear catch basin		43° 46.522' N	122° 13.049' W
810F	High	Culvert	Repair Needed	Clear catch basin		43° 46.522' N	122° 13.066' W
810K	High	Landing or Log Deck	Repair Needed	Big, dead, wet and alive dead-end area. Use riprap cut through to bank. Add live brush along top of bank. Use live brush along bottom. (8/23/22) In use as log deck. Repair after by removal REAF team 1/28		43° 46.462' N	122° 21.366' W
810M	High	Other	Repair Needed	Revised design		43° 46.462' N	122° 21.272' W
810N	High	Access Point	Repair Needed	Reopen path in tree-pile, large white rocks	Binary REAF road for primary strike zone	43° 46.502' N	122° 13.070' W
810E	High	Repair Point	Repair Needed	replace berm/grade	replace berm/grade	43° 46.524' N	122° 13.037' W
810L	High	Stream Crossing	In Progress	Full repair	REAF (8/23/22) 1/28. Check stream instead of stream crossing, open to bank, weed and clear stream bank to create 100% full repair	43° 46.524' N	122° 13.048' W
810T	High	Structure Wrap	Repair Needed	Remove shrubs, bring slope closer to stream channel, bring all dead wood up to bank, brush up to 400 ft. brush bag for glass fibers	Remove shrubs, bring slope closer to stream channel, bring all dead wood up to bank, brush up to 400 ft. brush bag for glass fibers	43° 46.540' N	122° 13.144' W
2007	High	Structure Wrap	Completed - Ready for Inspection	Full repair	Remove shrubs, bring slope closer to stream channel, bring all dead wood up to bank, brush up to 400 ft. brush bag for glass fibers	43° 50.766' N	122° 13.000' W
810J	High	Structure Wrap	Repair Needed	Remove shrubs		43° 50.688' N	122° 13.085' W
810H	Medium	Culvert	Repair Needed	Full repair		43° 46.522' N	122° 13.099' W
2007	Medium	Dozer Push	Repair Needed	Full repair		43° 46.506' N	122° 13.066' W
810A	Medium	Dozer Push	Completed - Ready for Inspection	Full repair		43° 51.922' N	122° 13.070' W
810C	Medium	Dozer Push	Completed - Ready for Inspection	Full repair		43° 51.924' N	122° 13.099' W
810G	Medium	Dozer Push	Repair Needed	Full repair		43° 51.848' N	122° 13.066' W
810R	Medium	Dozer Push	Repair Needed	Full repair		43° 51.522' N	122° 13.088' W
810W	Medium	Dozer Push	Repair Needed	Full repair		43° 51.524' N	122° 13.087' W
810V	Medium	Dozer Push	Repair Needed	Full repair		43° 46.522' N	122° 13.066' W
810X	Medium	Dozer Push	Repair Needed	Full repair		43° 46.522' N	122° 13.066' W
810Y	Medium	Dozer Push	Repair Needed	Full repair		43° 46.522' N	122° 13.066' W
810Z	Medium	Dozer Push	Repair Needed	Full repair		43° 46.522' N	122° 13.066' W
810AA	Medium	Dozer Push	Repair Needed	Full repair		43° 46.522' N	122° 13.066' W
810AB	Medium	Dozer Push	Repair Needed	Full repair		43° 46.522' N	122° 13.066' W
810AC	Medium	Dozer Push	Repair Needed	Full repair		43° 46.522' N	122° 13.066' W
810AD	Medium	Dozer Push	Repair Needed	Full repair		43° 46.522' N	122° 13.066' W
810AE	Medium	Dozer Push	Repair Needed	Full repair		43° 46.522' N	122° 13.066' W
810AF	Medium	Dozer Push	Repair Needed	Full repair		43° 46.522' N	122° 13.066' W
810AG	Medium	Dozer Push	Repair Needed	Full repair		43° 46.522' N	122° 13.066' W
810AH	Medium	Dozer Push	Repair Needed	Full repair		43° 46.522' N	122° 13.066' W
810AI	Medium	Dozer Push	Repair Needed	Full repair		43° 46.522' N	122° 13.066' W
810AJ	Medium	Dozer Push	Repair Needed	Full repair		43° 46.522' N	122° 13.066' W
810AK	Medium	Dozer Push	Repair Needed	Full repair		43° 46.522' N	122° 13.066' W
810AL	Medium	Dozer Push	Repair Needed	Full repair		43° 46.522' N	122° 13.066' W
810AM	Medium	Dozer Push	Repair Needed	Full repair		43° 46.522' N	122° 13.066' W
810AN	Medium	Dozer Push	Repair Needed	Full repair		43° 46.522' N	122° 13.066' W
810AO	Medium	Dozer Push	Repair Needed	Full repair		43° 46.522' N	122° 13.066' W
810AP	Medium	Dozer Push	Repair Needed	Full repair		43° 46.522' N	122° 13.066' W
810AQ	Medium	Dozer Push	Repair Needed	Full repair		43° 46.522' N	122° 13.066' W
810AR	Medium	Dozer Push	Repair Needed	Full repair		43° 46.522' N	122° 13.066' W
810AS	Medium	Dozer Push	Repair Needed	Full repair		43° 46.522' N	122° 13.066' W
810AT	Medium	Dozer Push	Repair Needed	Full repair		43° 46.522' N	122° 13.066' W
810AU	Medium	Dozer Push	Repair Needed	Full repair		43° 46.522' N	122° 13.066' W
810AV	Medium	Dozer Push	Repair Needed	Full repair		43° 46.522' N	122° 13.066' W
810AW	Medium	Dozer Push	Repair Needed	Full repair		43° 46.522' N	122° 13.066' W
810AX	Medium	Dozer Push	Repair Needed	Full repair		43° 46.522' N	122° 13.066' W
810AY	Medium	Dozer Push	Repair Needed	Full repair		43° 46.522' N	122° 13.066' W
810AZ	Medium	Dozer Push	Repair Needed	Full repair		43° 46.522' N	122° 13.066' W
810BA	Medium	Dozer Push	Repair Needed	Full repair		43° 46.522' N	122° 13.066' W
810BB	Medium	Dozer Push	Repair Needed	Full repair		43° 46.522' N	122° 13.066' W
810BC	Medium	Dozer Push	Repair Needed	Full repair		43° 46.522' N	122° 13.066' W
810BD	Medium	Dozer Push	Repair Needed	Full repair		43° 46.522' N	122° 13.066' W
810BE	Medium	Dozer Push	Repair Needed	Full repair		43° 46.522' N	122° 13.066' W
810BF	Medium	Dozer Push	Repair Needed	Full repair		43° 46.522' N	122° 13.066' W
810BG	Medium	Dozer Push	Repair Needed	Full repair		43° 46.522' N	122° 13.066' W
810BH	Medium	Dozer Push	Repair Needed	Full repair		43° 46.522' N	122° 13.066' W
810BI	Medium	Dozer Push	Repair Needed	Full repair		43° 46.522' N	122° 13.066' W
810BJ	Medium	Dozer Push	Repair Needed	Full repair		43° 46.522' N	122° 13.066' W
810BK	Medium	Dozer Push	Repair Needed	Full repair		43° 46.522' N	122° 13.066' W
810BL	Medium	Dozer Push	Repair Needed	Full repair		43° 46.522' N	122° 13.066' W
810BM	Medium	Dozer Push	Repair Needed	Full repair		43° 46.522' N	122° 13.066' W
810BN	Medium	Dozer Push	Repair Needed	Full repair		43° 46.522' N	122° 13.066' W
810BO	Medium	Dozer Push	Repair Needed	Full repair		43° 46.522' N	122° 13.066' W
810BP	Medium	Dozer Push	Repair Needed	Full repair		43° 46.522' N	122° 13.066' W
810BQ	Medium	Dozer Push	Repair Needed	Full repair		43° 46.522' N	122° 13.066' W
810BR	Medium	Dozer Push	Repair Needed	Full repair		43° 46.522' N	122° 13.066' W
810BS	Medium	Dozer Push	Repair Needed	Full repair		43° 46.522' N	122° 13.066' W
810BT	Medium	Dozer Push	Repair Needed	Full repair		43° 46.522' N	122° 13.066' W
810BU	Medium	Dozer Push	Repair Needed	Full repair		43° 46.522' N	122° 13.066' W
810BV	Medium	Dozer Push	Repair Needed	Full repair		43° 46.522' N	122° 13.066' W
810BW	Medium	Dozer Push	Repair Needed	Full repair		43° 46.522' N	122° 13.066' W
810BX	Medium	Dozer Push	Repair Needed	Full repair		43° 46.522' N	122° 13.066' W
810BY	Medium	Dozer Push	Repair Needed	Full repair		43° 46.522' N	122° 13.066' W
810BZ	Medium	Dozer Push	Repair Needed	Full repair		43° 46.522' N	122° 13.066' W
810CA	Medium	Dozer Push	Repair Needed	Full repair		43° 46.522' N	122° 13.066' W
810CB	Medium	Dozer Push	Repair Needed	Full repair		43° 46.522' N	122° 13.066' W
810CC	Medium	Dozer Push	Repair Needed	Full repair		43° 46.522' N	122° 13.066' W
810CD	Medium	Dozer Push	Repair Needed	Full repair		43° 46.522' N	122° 13.066' W
810CE	Medium	Dozer Push	Repair Needed	Full repair		43° 46.522' N	122° 13.066' W
810CF	Medium	Dozer Push	Repair Needed	Full repair		43° 46.522' N	122° 13.066' W
810CG	Medium	Dozer Push	Repair Needed	Full repair		43° 46.522' N	122° 13.066' W
810CH	Medium	Dozer Push	Repair Needed	Full repair		43° 46.522' N	122° 13.066' W
810CI	Medium	Dozer Push	Repair Needed	Full repair		43° 46.522' N	122° 13.066' W
810CJ	Medium	Dozer Push	Repair Needed	Full repair		43° 46.522' N	122° 13.066' W
810CK	Medium	Dozer Push	Repair Needed	Full repair		43° 46.522' N	122° 13.066' W
810CL	Medium	Dozer Push	Repair Needed	Full repair		43° 46.522' N	122° 13.066' W
810CM	Medium	Dozer Push	Repair Needed	Full repair		43° 46.522' N	122° 13.066' W
810CN	Medium	Dozer Push	Repair Needed	Full repair		43° 46.522' N	122° 13.066' W
810CO	Medium	Dozer Push	Repair Needed	Full repair		43° 46.522' N	122° 13.066' W
810CP	Medium	Dozer Push	Repair Needed	Full repair		43° 46.522' N	122° 13.066' W
810CQ	Medium	Dozer Push	Repair Needed	Full repair		43° 46.522' N	122° 13.066' W
810CR	Medium	Dozer Push	Repair Needed	Full repair		43° 46.522' N	122° 13.066' W
810CS	Medium	Dozer Push	Repair Needed	Full repair		43° 46.522' N	122° 13.066' W
810CT	Medium	Dozer Push	Repair Needed	Full repair		43° 46.522' N	122° 13.066' W
810CU	Medium	Dozer Push	Repair Needed	Full repair		43° 46.522' N	122° 13.066' W
810CV	Medium	Dozer Push	Repair Needed	Full repair		43° 46.522' N	122° 13.066' W
810CW	Medium	Dozer Push	Repair Needed	Full repair		43° 46.522' N	122° 13.066' W
810CX	Medium	Dozer Push	Repair Needed	Full repair		43° 46.522' N	122° 13.066' W
810CY	Medium	Dozer Push	Repair Needed	Full repair		43° 46.522' N	122° 13.066' W
810CZ	Medium	Dozer Push	Repair Needed	Full repair		43° 46.522' N	122° 13.066' W
810DA	Medium	Dozer Push	Repair Needed	Full repair		43° 46.522' N	122° 13.066' W
810DB	Medium	Dozer Push	Repair Needed	Full repair		43° 46.522' N	122° 13.066' W
810DC	Medium	Dozer Push	Repair Needed	Full repair		43° 46.522' N	122° 13.066' W
810DD	Medium	Dozer Push	Repair Needed	Full repair		43° 46.522' N	122° 13.066' W
810DE	Medium	Dozer Push	Repair Needed	Full repair		43° 46.522' N	122° 13.066' W
810DF	Medium	Dozer Push	Repair Needed	Full repair		43° 46.522' N	122° 13.066' W
810DG	Medium	Dozer Push	Repair Needed	Full repair		43° 46.522' N	122° 13.066' W
810DH	Medium	Dozer Push	Repair Needed	Full repair		43° 46.522' N	122° 13.066' W
810DI	Medium	Dozer Push	Repair Needed	Full repair		43° 46.522' N	122° 13.066' W
810DJ	Medium	Dozer Push	Repair Needed	Full repair		43° 46.522' N	122° 13.066' W
810DK	Medium	Dozer Push	Repair Needed	Full repair		43° 46.522' N	122° 13.066' W
810DL	Medium	Dozer Push	Repair Needed	Full repair		43° 46.522' N	122° 13.066' W
810DM	Medium	Dozer Push	Repair Needed	Full repair		43° 46.522' N	122° 13.066' W
810DN	Medium	Dozer Push	Repair Needed	Full repair		43° 46.522' N	122° 13.066' W
810DO	Medium	Dozer Push	Repair Needed	Full repair		43° 46.522' N	122° 13.066' W
810DP	Medium	Dozer Push	Repair Needed	Full repair		43° 46.522' N	122° 13.066' W
810DQ	Medium	Dozer Push	Repair Needed	Full repair		43° 46.522' N	122° 13.066' W
810DR	Medium	Dozer Push	Repair Needed	Full repair		43° 46.522' N	122° 13.066' W
810DS	Medium	Dozer Push	Repair Needed	Full repair		43° 46.522' N	122° 13.066' W
810DT	Medium	Dozer Push	Repair Needed	Full repair		43° 46.522' N	122° 13.066' W
810DU	Medium	Dozer Push	Repair Needed	Full repair		43° 46.522' N	122° 13.066' W
810DV	Medium	Dozer Push	Repair Needed	Full repair		43° 46.522' N	122° 13.066' W
810DW	Medium	Dozer Push					