

Critical Values at Risk:

- Oakridge, West Fir and High Prairie
- Hwy. 58 and Forest Road 19
- Union Pacific Railroad corridor
- Waldo Lake and associated recreational investments
- Private infrastructure and recreational investment within surrounding Cascade Lakes Highway

Condition: Fire is predicted to reach or has reached the following MAP HVRAs:
 Affected
 • Oakridge Community
 • HWY 58
 Actions: Consider the following (based on predicted fire growth).
 • Recommend Level 3 - Red Evacuation
 • Initiate Unified Command
 • Notify Oregon State Policy/State Fire Marshall
 • Notify Oregon Dept. of Transportation
 • Notify Union Pacific Railroad
 • Request traffic control car operations on HWY 58
 • Keep fire north of Union Pacific railroad and East of Heedtooth Mountain.
 Resources:
 • 1-TFLD
 • 2-CRW1/2IA
 • 2-ENCS
 • 2-DOZ3
 • 1-WT12
 • Local Law Enforcement and county emergency management personnel

Condition: Fire is predicted to reach or has reached the following MAP HVRAs:
 Affected
 • Odell Lake Area
 Actions: Consider the following (based on predicted fire growth).
 • Upgrade Odell Lake to a Level 2 (Get Set) evacuation status
 • Request traffic control car operations on HWY 58
 • Notify Oregon State Policy/State Fire Marshall
 • Notify Oregon Department of Transportation
 • Notify Union Pacific Railroad
 • Initiate Structure Protection Plans
 • Install Hose Lay along Fuji Mountain Trail
 • Structure Wrap Fuji Shelter
 • Keep the fire as close to the trail from DP 89 to DP105 (Fuji Mountain Trail).
 Resources:
 • 1-TFLD
 • 4-CRW1/2IA
 • 1-STEN T3-T6
 • 2-WT12
 • Local Law Enforcement and county emergency management personnel

Condition: Fire is predicted to cross and become established South of Eagle Creek Rd.
 Actions: Consider the following (based on predicted fire growth).
 • Request traffic control car operations on HWY 58
 • Notify Oregon State Policy/State Fire Marshall
 • Notify Oregon Department of Transportation
 • Notify Union Pacific Railroad
 • Keep the fire north of Highway 58
 Resources:
 • 2-TFLD
 • 6-CRW1/2IA
 • 2-STEN T3-T6
 • 4-WT12

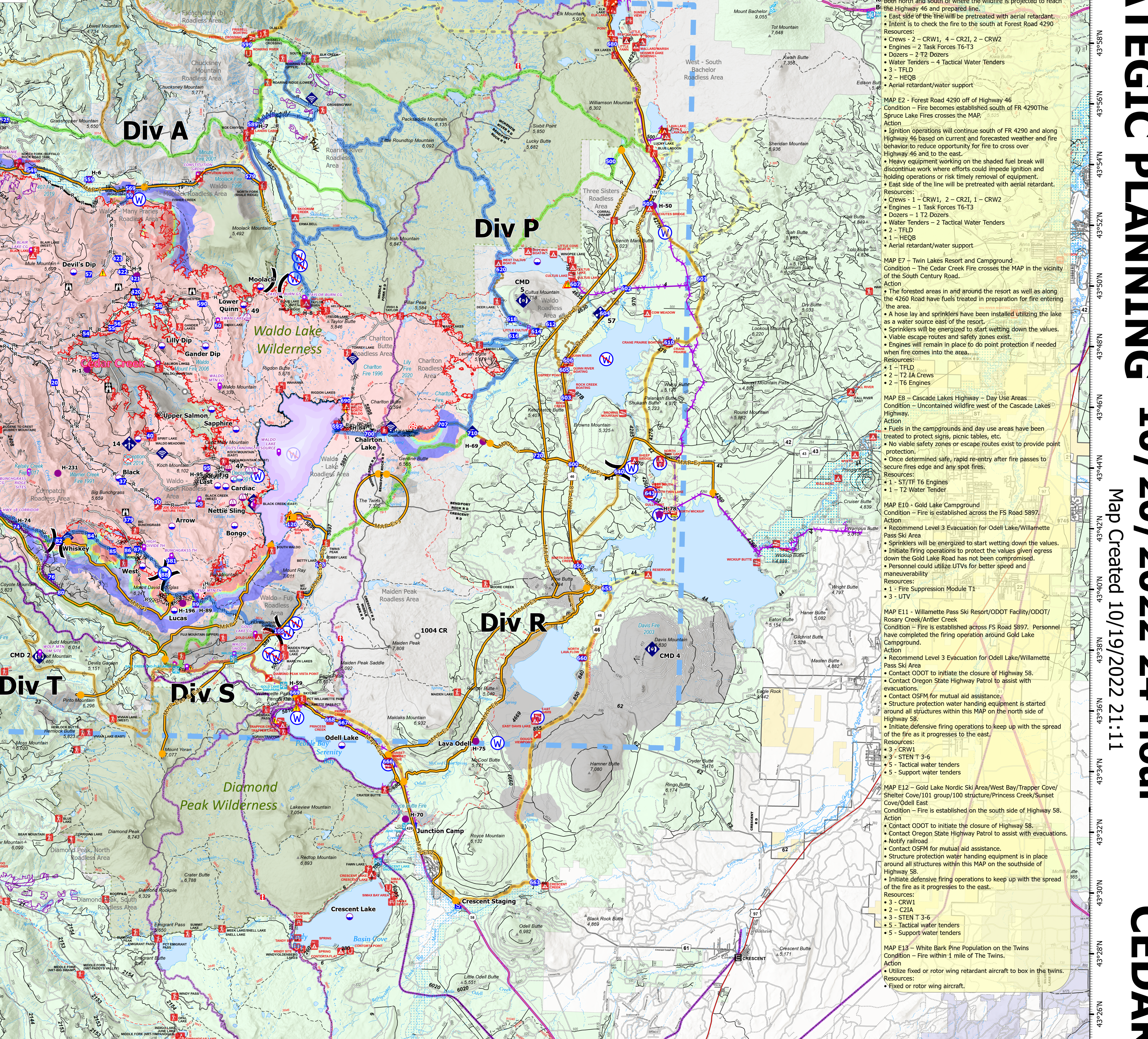
MAP 4
 Condition: Fire is predicted to reach or has reached the Wolf Creek communication site.
 Action: Consider the following (based on predicted fire growth).
 • Implement structure protection plans at Wolf Mountain com site
 • Keep the fire north of Salt Creek.
 Resources:
 • 2-TFLD
 • 2-HEC8
 • 8-CRW1/2IA
 • 2-STEN T3-T6
 • 4-WT12
 • 2-DOZ3

MAP 5
 Condition: Fire is predicted to reach or has reached the following MAP HVRAs:
 Affected
 • Hill Creek Lake Dam infrastructure (dam, power generating equipment and transmission lines)
 Actions: Consider the following (based on predicted fire growth).
 • Implement structure protection plans for Hill Creek Lake area
 • Notify and Coordinate with Hill Dam management personnel
 • Notify and Coordinate with Oregon Department of Forestry and industrial land owners (Sierra Pacific Timber Company).
 • Keep the fire north of Kitson Ridge.
 Resources:
 • Appropriate operational resources needed to implement structure protection plans
 • 4-TFLD
 • 8-CRW1/2IA
 • 2-STEN T3-T6
 • 4-WT12
 • 4-DOZ3

MAP 6
 Condition: Fire is predicted to reach or has reached the MAP HVRAs:
 Affected
 • Auferheide Road values at risk
 Actions: Consider (based on predicted fire growth).
 • Consider developing structure protection plans for Auferheide Road values at risk
 Resources:
 • Strategic Dept., SOPL, LTAN

MAP 7
 Condition: Fire is predicted to reach or has reached the following MAP HVRAs:
 Affected
 • Auferheide Road values at risk
 Actions: Consider (based on predicted fire growth).
 • Consider developing structure protection plans for Auferheide Road values at risk
 Resources:
 • Strategic Dept., SOPL, LTAN

MAP 8
 Condition: Fire is predicted to reach or has reached the following MAP HVRAs:
 Affected
 • Auferheide Road values at risk
 Actions: Consider (based on predicted fire growth).
 • Consider developing structure protection plans for Auferheide Road values at risk
 Resources:
 • Strategic Dept., SOPL, LTAN



| | | | | | | | |
|--|---|--|---|---|---|--|--|
| <p>Wildfire Daily Fire Perimeter</p> <ul style="list-style-type: none"> Contained Uncontained <p>Planning Strategy</p> <ul style="list-style-type: none"> P - Primary A - Alternate C - Contingency Management Action Points | <p>Fire Spread Probability (14 day)</p> <ul style="list-style-type: none"> <0.2% 0.2-4.9% 5-19% 20-39% 40-59% 60-79% 80-100% | <p>Values at Risk</p> <ul style="list-style-type: none"> Aviation Check Point Dip Site Hotspot Helibase Sling Site Unimproved Landing Area Division Break Incident Command Post | <p>Drop Point</p> <ul style="list-style-type: none"> Camp Staging Area Lookout Hot Spot - Spot Fire Fire Origin Landmark Gate Bridge | <p>Mobile Weather Unit</p> <ul style="list-style-type: none"> Internet Access Repeater Safety Zone Hazard Water Source Restricted Water Source Completed Dozer Line Completed Fuel Break | <p>Completed Hand Line</p> <ul style="list-style-type: none"> Completed Mixed Construction Line Completed Road as Construction Line Planned Dozer Line Planned Hand Line Planned Road as Line Access or Improved Road Gate Road Repair Escape Route | <p>Aerial Hazard</p> <ul style="list-style-type: none"> UAS Launch and Recovery Zone Temporary Flight Restriction Initial Attack Boundary Wilderness Roadless Area Wild and Scenic River Historic Fire Perimeter 2012 - 2021 | <p>2022 Active Timber Sales</p> <ul style="list-style-type: none"> Box TS Contract Units |
|--|---|--|---|---|---|--|--|

CEDAR CREEK Strategic Planning
 OR-WIF-220180
 10/20/2022 24 Hour

126,222 acres
 10/18/2022 @ 1815
 Acres determined from IR

NAD 1983 USFS R6 Albers

Map Created 10/19/2022 21:11

0 0.5 1 2 3 Miles