

Critical Values at Risk:

- Oakridge, West Fir and High Prairie
- Hwy. 58 and Forest Road 19
- Union Pacific Railroad corridor
- Waldo Lake and associated recreational investments
- Private infrastructure and recreational investment within surrounding Cascade Lakes Highway

Condition: Fire is predicted to reach or has reached the following MAP HVRAs:
 Affected
 • Oakridge Community
 • HWY 58
 Actions: Consider the following (based on predicted fire growth).
 • Recommendation Level 3 - Red Evacuation
 • Initiate Unified Command
 • Notify Oregon State Policy/State Fire Marshall
 • Notify Oregon Dept. of Transportation
 • Notify Union Pacific Railroad
 • Request traffic control car operations on HWY 58
 • Keep fire north of Union Pacific railroad and East of Heedtooth Mountain.
 Resources:
 • 1-TFLD
 • 2-CRW1/2IA
 • 2-HEC3
 • 2-DOZ3
 • 1-WT12
 Local Law Enforcement and county emergency management personnel

Condition: Fire is predicted to reach or has reached the following MAP HVRAs:
 Affected
 • Odell Lake Area
 Actions: Consider the following (based on predicted fire growth).
 • Upgrade Odell Lake to a Level 2 (Get Set) evacuation status
 • Request traffic control car operations on HWY 58
 • Notify Oregon State Policy/State Fire Marshall
 • Notify Oregon Department of Transportation
 • Notify Union Pacific Railroad
 • Initiate Structure Protection Plans
 • Install Hose Lay along Fuji Mountain Trail
 • Structure Wrap Fuji Shelter
 • Keep the fire as close to the trail from DP 89 to DP105 (Fuji Mountain Trail).
 Resources:
 • 1-TFLD
 • 4-CRW1/2IA
 • 1-STEN T3-T6
 • 2-WT12
 Local Law Enforcement and county emergency management personnel

Condition: Fire is predicted to cross and become established South of Eagle Creek Rd.
 Actions: Consider the following (based on predicted fire growth).
 • Request traffic control car operations on HWY 58
 • Notify Oregon State Policy/State Fire Marshall
 • Notify Oregon Department of Transportation
 • Notify Union Pacific Railroad
 • Keep the fire north of Highway 58
 Resources:
 • 2-TFLD
 • 6-CRW1/2IA
 • 2-STEN T3-T6
 • 4-WT12

MAP 4
 Condition: Fire is predicted to reach or has reached the Wolf Creek communication site.
 Action: Consider the following (based on predicted fire growth).
 • Implement structure protection plans at Wolf Mountain com site
 • Keep the fire north of Salt Creek.
 Resources:
 • 2-TFLD
 • 2-HEC3
 • 8-CRW1/2IA
 • 2-STEN T3-T6
 • 4-WT12
 • 2-DOZ3

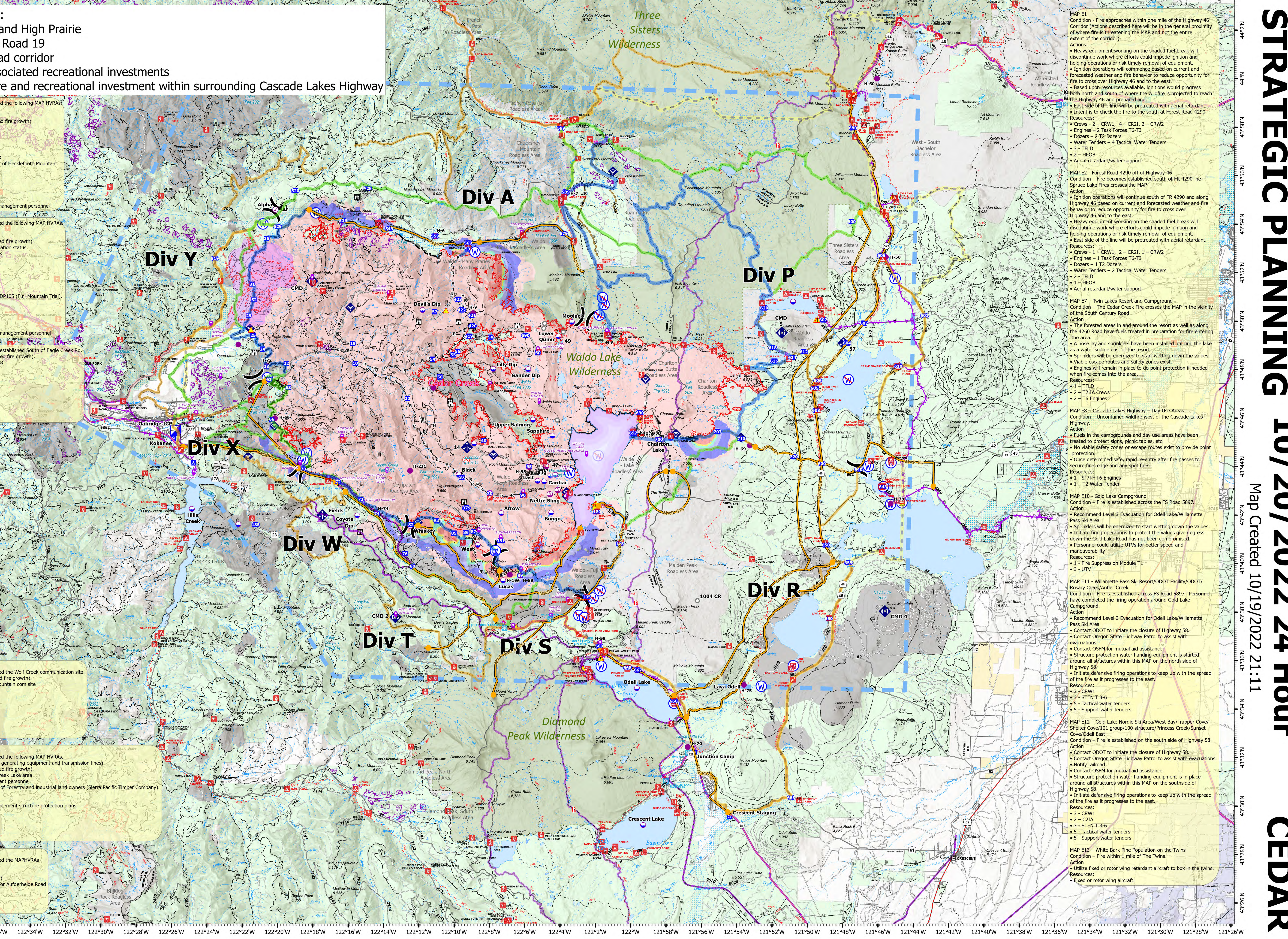
MAP 5
 Condition: Fire is predicted to reach or has reached the following MAP HVRAs:
 Affected
 • Hill Creek Lake Dam infrastructure (dam, power generating equipment and transmission lines)
 Actions: Consider the following (based on predicted fire growth).
 • Implement structure protection plans for Hill Creek Lake area
 • Notify and Coordinate with Hill Dam management personnel
 • Notify and Coordinate with Oregon Department of Forestry and industrial land owners (Sierra Pacific Timber Company).
 • Keep the fire north of Kitson Ridge.
 Resources:
 • Appropriate operational resources needed to implement structure protection plans
 • 4-TFLD
 • 8-CRW1/2IA
 • 2-STEN T3-T6
 • 4-WT12
 • 4-DOZ3

MAP 6
 Condition: Fire is predicted to reach or has reached the MAP HVRAs:
 Affected
 • Auferheide Road values at risk
 Actions: Consider (based on predicted fire growth).
 • Consider developing structure protection plans for Auferheide Road values at risk
 Resources:
 • Strategic Operations, SOPL, LTAN

MAP 7
 Condition: Fire is predicted to reach or has reached the following MAP HVRAs:
 Affected
 • Auferheide Road values at risk
 Actions: Consider (based on predicted fire growth).
 • Consider developing structure protection plans for Auferheide Road values at risk
 Resources:
 • Strategic Operations, SOPL, LTAN

MAP 8
 Condition: Fire is predicted to reach or has reached the following MAP HVRAs:
 Affected
 • Auferheide Road values at risk
 Actions: Consider (based on predicted fire growth).
 • Consider developing structure protection plans for Auferheide Road values at risk
 Resources:
 • Strategic Operations, SOPL, LTAN

MAP 9
 Condition: Fire is predicted to reach or has reached the following MAP HVRAs:
 Affected
 • Auferheide Road values at risk
 Actions: Consider (based on predicted fire growth).
 • Consider developing structure protection plans for Auferheide Road values at risk
 Resources:
 • Strategic Operations, SOPL, LTAN



MAP E1
 Condition - Fire approaches within one mile of the Highway 46 Corridor (Actions described here will be in the general proximity of where fire is threatening the MAP and not the entire extent of the corridor).
 Actions:
 • Heavy equipment working on the shaded fuel break will discontinue work where efforts could impede ignition and holding operations or risk timely removal of equipment.
 • Ignition operations will commence based on current and forecasted weather and fire behavior to reduce opportunity for fire to cross over Highway 46 and to the east.
 • Based upon resources available, ignitions would progress both north and south of where the wildfire is projected to reach the Highway 46 and prepared line.
 • East side of the line will be pretreated with aerial retardant.
 • Intent is to check the fire to the south at Forest Road 4290
 Resources:
 • Crews - 2 - CRW1, 4 - CR21, 2 - CRW2
 • Engines - 1 Task Forces T6-T3
 • Dozers - 2 T2 Dozers
 • Water Tenders - 4 Tactical Water Tenders
 • 3 - TFLD
 • 2 - HEQB
 • Aerial retardant/water support

MAP E2 - Forest Road 4290 off of Highway 46
 Condition - Fire becomes established south of FR 4290The Spruce Lake Fires crosses the MAP.
 Action
 • Ignition operations will continue south of FR 4290 and along Highway 46 based on current and forecasted weather and fire behavior to reduce opportunity for fire to cross over Highway 46 and to the east.
 • Heavy equipment working on the shaded fuel break will discontinue work where efforts could impede ignition and holding operations or risk timely removal of equipment.
 • East side of the line will be pretreated with aerial retardant.
 Resources:
 • Crews - 1 - CRW1, 2 - CR21, 1 - CRW2
 • Engines - 1 Task Forces T6-T3
 • Dozers - 1 T2 Dozers
 • Water Tenders - 2 Tactical Water Tenders
 • 1 - TFLD
 • 1 - HEQB
 • Aerial retardant/water support

MAP E7 - Twin Lakes Resort and Campground
 Condition - The Cedar Creek Fire crosses the MAP in the vicinity of the South Century Road.
 Action
 • The forested areas in and around the resort as well as along the 4260 Road have fuels treated in preparation for fire entering the area.
 • A hose lay and sprinklers have been installed utilizing the lake as a water source east of the resort.
 • Sprinklers will be energized to start wetting down the values.
 • Viable escape routes and safety zones exist.
 • Engines will remain in place to do point protection if needed when fire comes into the area.
 Resources:
 • 1 - TFLD
 • 2 - T2 IA Crews
 • 2 - T6 Engines

MAP E8 - Cascade Lakes Highway - Day Use Areas
 Condition - Uncontained wildfire west of the Cascade Lakes Highway.
 Action
 • Fuels in the campgrounds and day use areas have been treated to protect signs, picnic tables, etc.
 • No viable safety zones or escape routes exist to provide point protection.
 • Once determined safe, rapid re-entry after fire passes to secure fires edge and any spot fires.
 Resources:
 • 1 - ST/TF T6 Engines
 • 1 - T2 Water Tender

MAP E10 - Gold Lake Campground
 Condition - Fire is established across the FS Road 5897.
 Action
 • Recommend Level 3 Evacuation for Odell Lake/Willamette Pass Ski Area
 • Sprinklers will be energized to start wetting down the values.
 • Initiate firing operations to protect the values given egress down the Gold Lake Road has not been compromised.
 • Personnel could utilize LTVs for better speed and maneuverability
 Resources:
 • 1 - Fire Suppression Module T1
 • 1 - LTV

MAP E11 - Willamette Pass Ski Resort/ODOT Facility/ODOT/Rosary Creek/Anlier Creek
 Condition - Fire is established across FS Road 5897. Personnel have completed the firing operation around Gold Lake Campground.
 Action
 • Recommend Level 3 Evacuation for Odell Lake/Willamette Pass Ski Area
 • Contact ODOT to initiate the closure of Highway 58.
 • Contact Oregon State Highway Patrol to assist with evacuations.
 • Contact OSFM for mutual aid assistance.
 • Structure protection water handling equipment is started around all structures within this MAP on the north side of Highway 58.
 • Initiate defensive firing operations to keep up with the spread of the fire as it progresses to the east.
 Resources:
 • 3 - CRW1
 • 3 - STEN T 3-6
 • 5 - Tactical water tenders
 • 5 - Support water tenders

MAP E12 - Gold Lake Nordic Ski Area/West Bay/Trapper Cove/Shelter Cove/101 group/100 structure/Princess Creek/Sunset Cove/Odell East
 Condition - Fire is established on the south side of Highway 58.
 Action
 • Contact ODOT to initiate the closure of Highway 58.
 • Contact Oregon State Highway Patrol to assist with evacuations.
 • Contact OSFM for mutual aid assistance.
 • Structure protection water handling equipment is in place around all structures within this MAP on the south side of Highway 58.
 • Initiate defensive firing operations to keep up with the spread of the fire as it progresses to the east.
 Resources:
 • 3 - CRW1
 • 2 - C2IA
 • 3 - STEN T 3-6
 • 5 - Tactical water tenders
 • 5 - Support water tenders

MAP E13 - White Bark Pine Population on the Twins
 Condition - Fire within 1 mile of The Twins.
 Action
 • Utilize fixed or rotor wing retardant aircraft to box in the twins.
 Resources:
 • Fixed or rotor wing aircraft.

CEDAR CREEK
 Strategic Planning
 OR-WIF-220180
 10/20/2022 24 Hour

126,222 acres
 10/18/2022 @ 1815
 Acres determined
 from IR

NAD 1983 USFS R6 Albers

<ul style="list-style-type: none"> Wildfire Daily Fire Perimeter Contained Uncontained Planning Strategy A - Primary A - Alternate C - Contingency Management Action Points 	<ul style="list-style-type: none"> Fire Spread Probability (14 day) <0.2% 0.2-4.9% 5-19% 20-39% 40-59% 60-79% 80-100% 	<ul style="list-style-type: none"> Values at Risk Aviation Check Point Dip Site Helispot Helibase Sling Site Unimproved Landing Area Division Break Incident Command Post 	<ul style="list-style-type: none"> Drop Point Camp Staging Area Lookout Hot Spot - Spot Fire Fire Origin Landmark Gate Bridge 	<ul style="list-style-type: none"> Mobile Weather Unit Internet Access Repeater Safety Zone Hazard Water Source Restricted Water Source Completed Dozer Line Completed Fuel Break 	<ul style="list-style-type: none"> Completed Hand Line Completed Mixed Construction Line Completed Road as Construction Planned Dozer Line Planned Hand Line Planned Road as Line Access or Improved Road Gate Road Repair Escape Route 	<ul style="list-style-type: none"> Aerial Hazard UAS Launch and Recovery Zone Temporary Flight Restriction Initial Attack Boundary Planned Hand Line Wilderness Roadless Area Wild and Scenic River Historic Fire Perimeter 2012 - 2021 Pacific Crest Trail 	<ul style="list-style-type: none"> 2022 Active Timber Sales Box TS Contract Units
-----------------------------------------------------------------------------------------------------------------------------------------------------------------------------------------------------------------------------------------------------------	--------------------------------------------------------------------------------------------------------------------------------------------------------------------------------------------------------	------------------------------------------------------------------------------------------------------------------------------------------------------------------------------------------------------------------------------------------------------------------	----------------------------------------------------------------------------------------------------------------------------------------------------------------------------------------------------------------------	--------------------------------------------------------------------------------------------------------------------------------------------------------------------------------------------------------------------------------------------------------------------------	-----------------------------------------------------------------------------------------------------------------------------------------------------------------------------------------------------------------------------------------------------------------------------------------------------------------------------------------	-------------------------------------------------------------------------------------------------------------------------------------------------------------------------------------------------------------------------------------------------------------------------------------------------------------------------------------------------------------	-----------------------------------------------------------------------------------------------------------