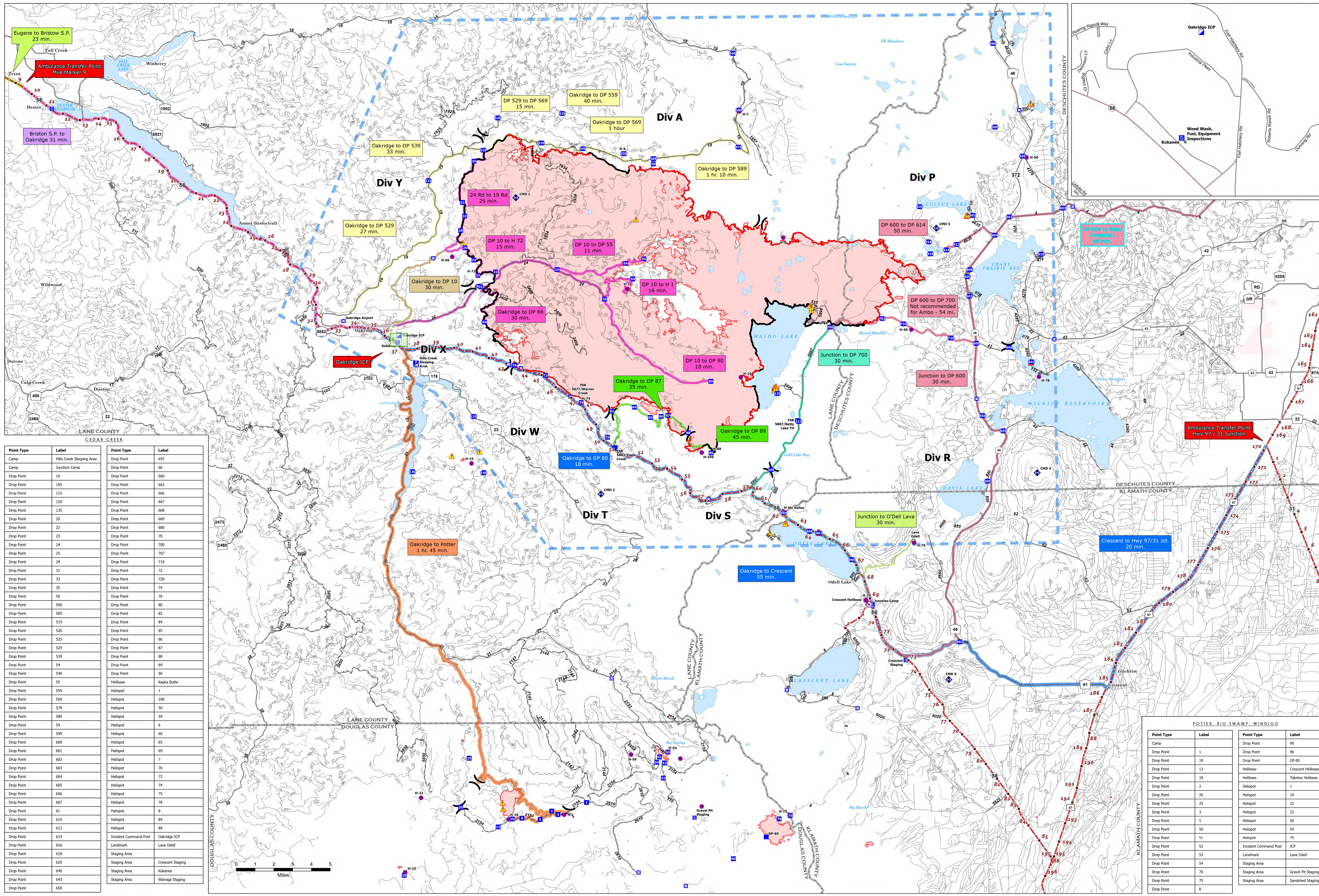


Map Created 10/19/2022 21:10



Point Type	Label	Point Type	Label
Camp	Hills Creek Sleeping Area	Drop Point	655
Camp	Junction Camp	Drop Point	66
Drop Point	10	Drop Point	660
Drop Point	105	Drop Point	663
Drop Point	115	Drop Point	666
Drop Point	120	Drop Point	667
Drop Point	135	Drop Point	668
Drop Point	20	Drop Point	669
Drop Point	22	Drop Point	680
Drop Point	23	Drop Point	70
Drop Point	24	Drop Point	700
Drop Point	25	Drop Point	707
Drop Point	29	Drop Point	710
Drop Point	31	Drop Point	72
Drop Point	32	Drop Point	720
Drop Point	35	Drop Point	74
Drop Point	50	Drop Point	76
Drop Point	500	Drop Point	80
Drop Point	505	Drop Point	82
Drop Point	519	Drop Point	84
Drop Point	520	Drop Point	85
Drop Point	525	Drop Point	86
Drop Point	529	Drop Point	87
Drop Point	539	Drop Point	88
Drop Point	54	Drop Point	89
Drop Point	549	Drop Point	90
Drop Point	55	Helibase	Kapka Butte
Drop Point	559	Helispot	1
Drop Point	569	Helispot	196
Drop Point	579	Helispot	50
Drop Point	589	Helispot	59
Drop Point	59	Helispot	6
Drop Point	599	Helispot	60
Drop Point	600	Helispot	65
Drop Point	601	Helispot	69
Drop Point	602	Helispot	70
Drop Point	603	Helispot	7
Drop Point	604	Helispot	72
Drop Point	605	Helispot	74
Drop Point	606	Helispot	75
Drop Point	607	Helispot	78
Drop Point	61	Helispot	8
Drop Point	610	Helispot	84
Drop Point	612	Helispot	89
Drop Point	614	Incident Command Post	Oakridge ICP
Drop Point	616	Landmark	Lava Odell
Drop Point	618	Staging Area	
Drop Point	620	Staging Area	Crescent Staging
Drop Point	640	Staging Area	Kokanee
Drop Point	643	Staging Area	Winogga Staging
Drop Point	650		

Point Type	Label	Point Type	Label
Drop Point	1	Drop Point	90
Drop Point	10	Drop Point	96
Drop Point	13	Helibase	Crescent Helibase
Drop Point	18	Helibase	Toketee Helibase
Drop Point	2	Helispot	1
Drop Point	20	Helispot	10
Drop Point	25	Helispot	22
Drop Point	3	Helispot	23
Drop Point	5	Helispot	50
Drop Point	50	Helispot	54
Drop Point	51	Helispot	75
Drop Point	52	Incident Command Post	ICP
Drop Point	53	Landmark	Lava Odell
Drop Point	54	Staging Area	
Drop Point	70	Staging Area	Gravel Pit Staging
Drop Point	75	Staging Area	Sandshed Staging
Drop Point	8		

**MEDICAL TRANSPORT**  
 Cedar Creek  
 OR-WIF-220180  
 10/20/2022 24 Hour  
 126,222 acres at 10/18/2022 @  
 1815 Acres from IR & Field

- Eugene ICP to Bristow State Park - 23 min.
- Bristow State Park to Oakridge - 31 min.
- Oakridge to DP 10 - 30 min.
- Oakridge to DP 66 - 30 min.
- 24 Rd to 19 Rd - 25 min.
- DP 10 to H 72 - 15 min.
- DP 10 to DP 55 - 11 min.
- DP 10 to H 1 - 16 min.
- DP 10 to DP 90 - 18 min.
- Oakridge to DP 589 - 1 hr. 10 min.
- Oakridge to DP 87 - 35 min.
- Oakridge to DP 89 - 45 min.
- Oakridge to Crescent - 55 min.
- Oakridge to Potter - 1 hr. 45 min.
- Junction to DP 700 30 min.
- DP 600 to DP 614 - 50 min.
- DP 600 to DP 700 - 54 min.
- Wildfire Perimeter
- Paved Road
- Gravel Road
- Dirt Roads
- Unimproved Roads
- Closed Roads
- Temporary Flight Restriction
- Helispot
- Helibase
- Division Break
- Incident Command Post
- Drop Point
- Closure
- Camp
- Staging Area
- Landmark
- Repeater
- Hazard

