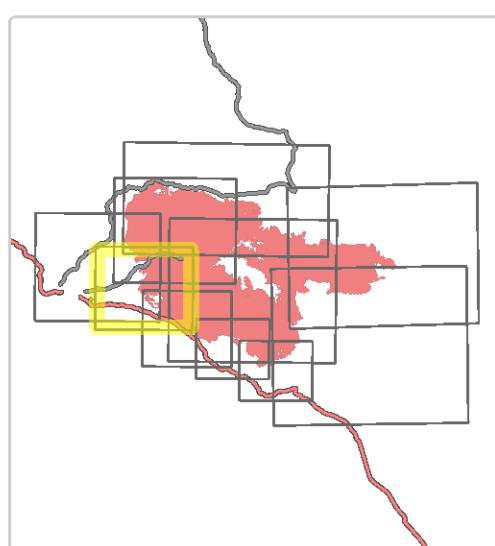


Div X2

Cedar Creek
OR-WIF-220180
10/21/2022 24 Hour

126,690 acres at 10/19/2022 @ 1948

- Dip Site
- Helispot
- Division Break
- Incident Command Post
- Drop Point
- Closure
- Camp
- Staging Area
- Lookout
- Value at Risk
- Other
- Landmark
- Gate
- Internet Access
- Hazard
- Water Source
- Completed Dozer Line
- Completed Fuel Break
- Completed Hand Line
- Completed Mixed Construction Line
- Completed Road as Line
- Planned Dozer Line
- Access or Improved Road
- Other
- Paved Road
- Gravel Road
- Unimproved Roads
- Closed Roads
- Interior Roads
- Contained
- Uncontained
- Wildfire Daily Fire Perimeter
- Forest Service Land
- Roadless Area



0 1:32,000 1
Miles

map exported at 10/20/2022 2204 hrs

