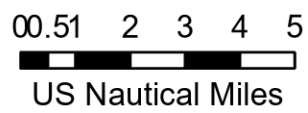


Pilot Map

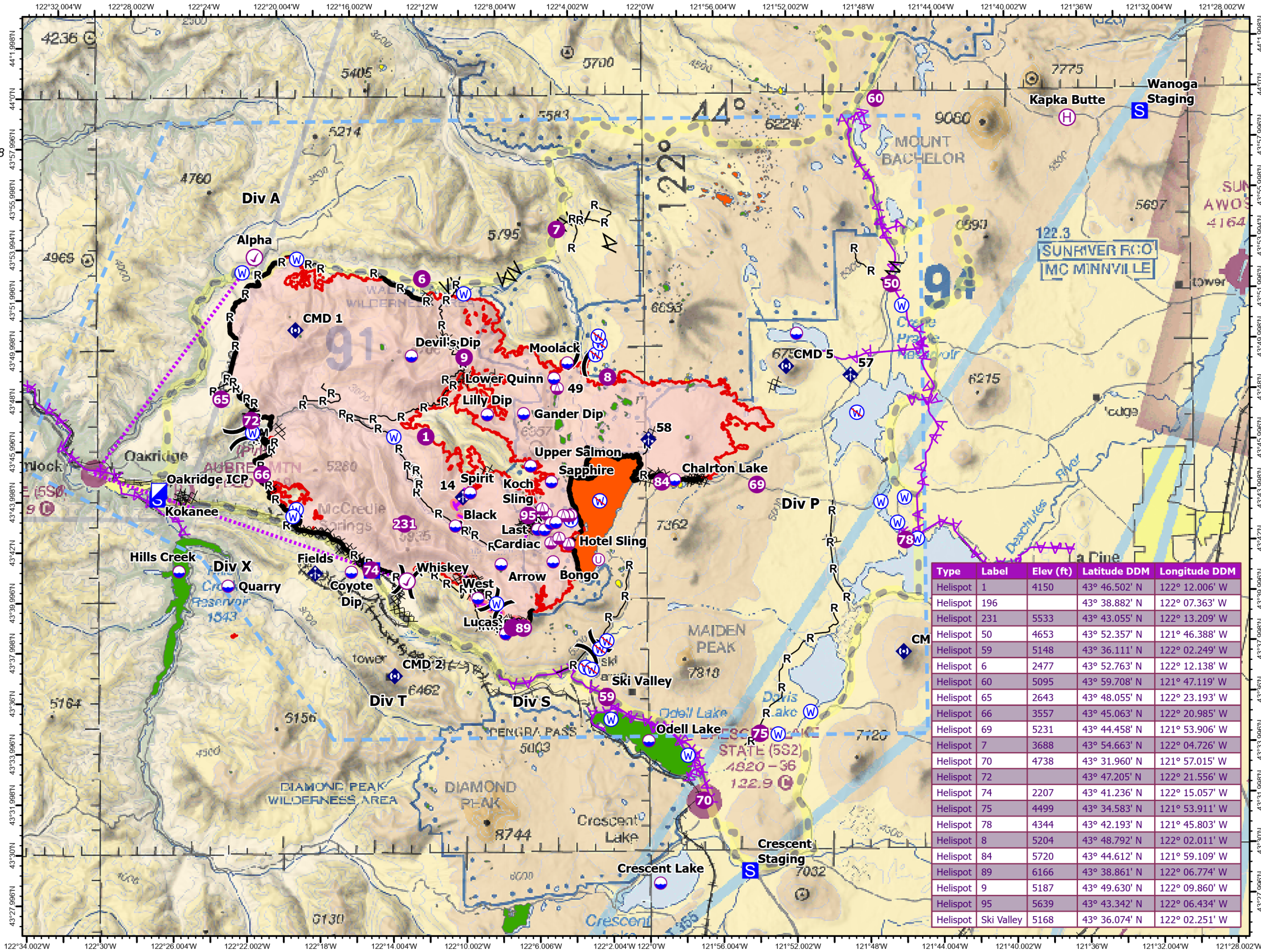
Cedar Creek
OR-WIF-220180
10/21/2022 24 Hour

126,690 acres at 10/19/2022 @ 1948

- Okay to dip?
- NO
 - READ approval required
 - YES
 - Aviation Check Point
 - Dip Site
 - Helispot
 - Helibase
 - Sling Site
 - Unimproved Landing Area
 - Division Break
 - Incident Command Post
 - Staging Area
 - Mobile Weather Unit
 - Repeater
 - Water Source
 - Restricted Water Source
 - Completed Dozer Line
 - Completed Fuel Break
 - Completed Mixed Construction Line
 - Completed Road as Line
 - Aerial Hazard
 - Retardant Drop
 - Aviation Route
 - UAS Launch and Recovery Zone
 - Temporary Flight Restriction
 - Wildfire Daily Fire Perimeter



10/20/2022 2200
Acres from IR & Field
North American 1983 Datum.
LatLong Grid



Type	Label	Elev (ft)	Latitude DDM	Longitude DDM
Helispot	1	4150	43° 46.502' N	122° 12.006' W
Helispot	196		43° 38.882' N	122° 07.363' W
Helispot	231	5533	43° 43.055' N	122° 13.209' W
Helispot	50	4653	43° 52.357' N	121° 46.388' W
Helispot	59	5148	43° 36.111' N	122° 02.249' W
Helispot	6	2477	43° 52.763' N	122° 12.138' W
Helispot	60	5095	43° 59.708' N	121° 47.119' W
Helispot	65	2643	43° 48.055' N	122° 23.193' W
Helispot	66	3557	43° 45.063' N	122° 20.985' W
Helispot	69	5231	43° 44.458' N	121° 53.906' W
Helispot	7	3688	43° 54.663' N	122° 04.726' W
Helispot	70	4738	43° 31.960' N	121° 57.015' W
Helispot	72		43° 47.205' N	122° 21.556' W
Helispot	74	2207	43° 41.236' N	122° 15.057' W
Helispot	75	4499	43° 34.583' N	121° 53.911' W
Helispot	78	4344	43° 42.193' N	121° 45.803' W
Helispot	8	5204	43° 48.792' N	122° 02.011' W
Helispot	84	5720	43° 44.612' N	121° 59.109' W
Helispot	89	6166	43° 38.861' N	122° 06.774' W
Helispot	9	5187	43° 49.630' N	122° 09.860' W
Helispot	95	5639	43° 43.342' N	122° 06.434' W
Helispot	Ski Valley	5168	43° 36.074' N	122° 02.251' W