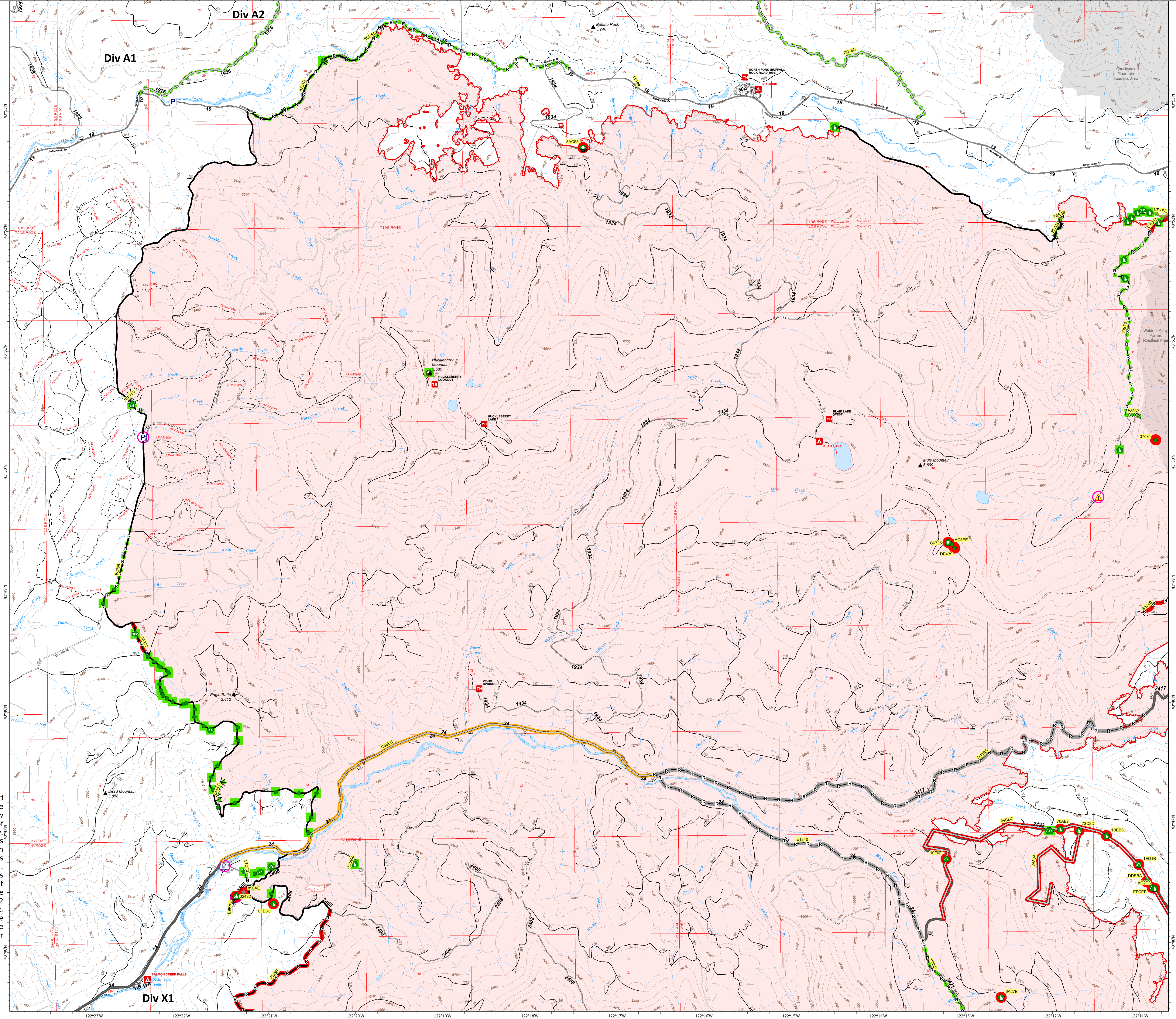
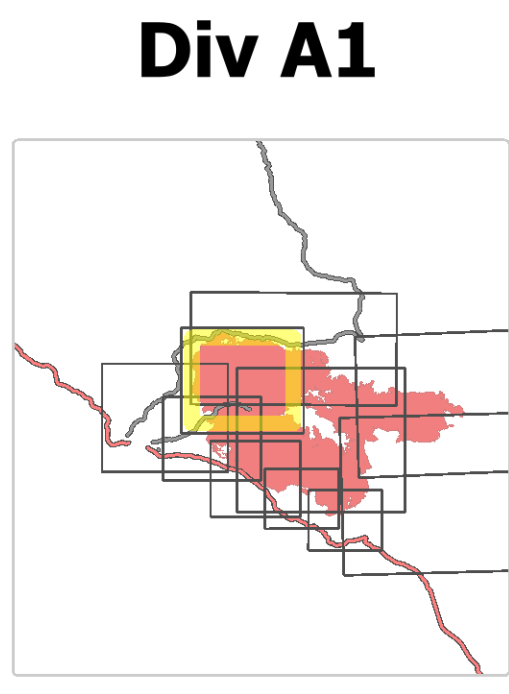


# Suppression Repair Tiles

Cedar Creek  
OR-WF-220180  
10/21/2022 24 Hour  
126,800 acres as of 10/19/2022 @ 1948  
1:1,100,000

- Accountable Property - Repair Status
- In Use - Fire Management (2)
  - Pump (3)
  - In Use - Fire Management (2)
- Accountable Property
- Repair Needed (17)
  - Completed - Inspected (56)
  - No Repair Needed (1)
  - Other (1)
  - Structure Wrap (3)
  - Stream Crossing (2)
  - Road Repair (1)
  - Repair Point (39)
  - Landing or Log Deck (1)
  - Dozer Push (19)
  - Culvert (10)
  - Hazard (1)
  - Completed Dozer Line (5)
  - Completed Fuel Break (1)
  - Completed Hand Line (9)
  - Completed Mead Construction Line (1)
  - Completed Road as Line (9)
  - Access or Improved Road (4)
  - Road Repair (1)
  - Repair Needed (6)
  - In Progress (1)
  - Completed - Inspected (21)
  - Other - See Comments (2)
  - Contained
  - Uncontained
  - Wildfire Daily Fire Perimeter
  - Interior/Roads
  - Powered Roads
  - Dirt (Not Powered)
  - Powered Road
  - Gravel Road
  - Unimproved Roads
  - Closed Roads
  - Roads
  - Roadless Area

**Note:** This map and associated tables have been filtered to only show Repair Points / Lines of Medium or High priority. There exists numerous other features of unknown or low priority repair needs throughout the fire area. The intended use of this map is to define/represent the repair work to be completed during IMT12 oversight of this incident. This map should **NOT** be considered a complete source for repair information.



| Repair ID | Priority | Point Type          | Status        | Repairs Needed   | Repair Comments                              | Latitude     | Longitude     |
|-----------|----------|---------------------|---------------|--|--|--------------|---------------|
| 1810P     | High     | Culvert             | Repair Needed | Clear catch basin  |  | 42°46.250' N | 122°15.000' W |
| 1810F     | High     | Culvert             | Repair Needed | Clear catch basin  |  | 42°46.218' N | 122°15.000' W |
| 1810K     | High     | Landing or Log Deck | Repair Needed | Fix, work, level and shore dislodged area. Use riprap or stone to back up to creek. Inspect 200' up the creek to see if riprap is needed. 10/19/2022 |  | 42°46.452' N | 122°15.000' W |
| 1810L     | High     | Other               | Repair Needed | Reconstruct stream   |  | 42°46.367' N | 122°15.072' W |
| 1810M     | High     | Road Point          | Repair Needed | Reconstruct stream   | Salvage BMP. Road for present during season  | 42°46.367' N | 122°15.072' W |
| 1810N     | High     | Road Point          | Repair Needed | Reconstruct stream   | Reconstruct stream                           | 42°46.248' N | 122°15.072' W |
| 1810O     | High     | Structure Wash      | Repair Needed | Remove debris along bank, make paths to remove debris, bring in fuel and riprap to back up to creek. 10/19/2022                                      | 4 riprap piles to back up creek, 100' riprap | 42°46.348' N | 122°15.000' W |
| 1810P     | High     | Structure Wash      | Repair Needed | Remove debris  |  | 42°46.348' N | 122°15.000' W |
| 1810Q     | Medium   | Culvert             | Repair Needed | Full repair  |  | 42°46.022' N | 122°15.064' W |
| 1810R     | Medium   | Door Path           | Repair Needed | Full repair  |  | 42°46.022' N | 122°15.064' W |
| 1810S     | Medium   | Door Path           | Repair Needed | Full repair  |  | 42°46.022' N | 122°15.064' W |
| 1810T     | Medium   | Door Path           | Repair Needed | Full repair  |  | 42°46.022' N | 122°15.064' W |
| 1810U     | Medium   | Door Path           | Repair Needed | Full repair  |  | 42°46.022' N | 122°15.064' W |
| 1810V     | Medium   | Door Path           | Repair Needed | Full repair  |  | 42°46.022' N | 122°15.064' W |
| 1810W     | Medium   | Door Path           | Repair Needed | Full repair  |  | 42°46.022' N | 122°15.064' W |
| 1810X     | Medium   | Door Path           | Repair Needed | Full repair  |  | 42°46.022' N | 122°15.064' W |
| 1810Y     | Medium   | Door Path           | Repair Needed | Full repair  |  | 42°46.022' N | 122°15.064' W |
| 1810Z     | Medium   | Door Path           | Repair Needed | Full repair  |  | 42°46.022' N | 122°15.064' W |
| 1810A     | Medium   | Door Path           | Repair Needed | Full repair  |  | 42°46.022' N | 122°15.064' W |
| 1810B     | Medium   | Door Path           | Repair Needed | Full repair  |  | 42°46.022' N | 122°15.064' W |
| 1810C     | Medium   | Door Path           | Repair Needed | Full repair  |  | 42°46.022' N | 122°15.064' W |
| 1810D     | Medium   | Door Path           | Repair Needed | Full repair  |  | 42°46.022' N | 122°15.064' W |
| 1810E     | Medium   | Door Path           | Repair Needed | Full repair  |  | 42°46.022' N | 122°15.064' W |
| 1810F     | Medium   | Door Path           | Repair Needed | Full repair  |  | 42°46.022' N | 122°15.064' W |
| 1810G     | Medium   | Door Path           | Repair Needed | Full repair  |  | 42°46.022' N | 122°15.064' W |
| 1810H     | Medium   | Door Path           | Repair Needed | Full repair  |  | 42°46.022' N | 122°15.064' W |
| 1810I     | Medium   | Door Path           | Repair Needed | Full repair  |  | 42°46.022' N | 122°15.064' W |
| 1810J     | Medium   | Door Path           | Repair Needed | Full repair  |  | 42°46.022' N | 122°15.064' W |
| 1810K     | Medium   | Door Path           | Repair Needed | Full repair  |  | 42°46.022' N | 122°15.064' W |
| 1810L     | Medium   | Door Path           | Repair Needed | Full repair  |  | 42°46.022' N | 122°15.064' W |
| 1810M     | Medium   | Door Path           | Repair Needed | Full repair  |  | 42°46.022' N | 122°15.064' W |
| 1810N     | Medium   | Door Path           | Repair Needed | Full repair  |  | 42°46.022' N | 122°15.064' W |
| 1810O     | Medium   | Door Path           | Repair Needed | Full repair  |  | 42°46.022' N | 122°15.064' W |
| 1810P     | Medium   | Door Path           | Repair Needed | Full repair  |  | 42°46.022' N | 122°15.064' W |
| 1810Q     | Medium   | Door Path           | Repair Needed | Full repair  |  | 42°46.022' N | 122°15.064' W |
| 1810R     | Medium   | Door Path           | Repair Needed | Full repair  |  | 42°46.022' N | 122°15.064' W |
| 1810S     | Medium   | Door Path           | Repair Needed | Full repair  |  | 42°46.022' N | 122°15.064' W |
| 1810T     | Medium   | Door Path           | Repair Needed | Full repair  |  | 42°46.022' N | 122°15.064' W |
| 1810U     | Medium   | Door Path           | Repair Needed | Full repair  |  | 42°46.022' N | 122°15.064' W |
| 1810V     | Medium   | Door Path           | Repair Needed | Full repair  |  | 42°46.022' N | 122°15.064' W |
| 1810W     | Medium   | Door Path           | Repair Needed | Full repair  |  | 42°46.022' N | 122°15.064' W |
| 1810X     | Medium   | Door Path           | Repair Needed | Full repair  |  | 42°46.022' N | 122°15.064' W |
| 1810Y     | Medium   | Door Path           | Repair Needed | Full repair  |  | 42°46.022' N | 122°15.064' W |
| 1810Z     | Medium   | Door Path           | Repair Needed | Full repair  |  | 42°46.022' N | 122°15.064' W |
| 1810A     | Medium   | Door Path           | Repair Needed | Full repair  |  | 42°46.022' N | 122°15.064' W |
| 1810B     | Medium   | Door Path           | Repair Needed | Full repair  |  | 42°46.022' N | 122°15.064' W |
| 1810C     | Medium   | Door Path           | Repair Needed | Full repair  |  | 42°46.022' N | 122°15.064' W |
| 1810D     | Medium   | Door Path           | Repair Needed | Full repair  |  | 42°46.022' N | 122°15.064' W |
| 1810E     | Medium   | Door Path           | Repair Needed | Full repair  |  | 42°46.022' N | 122°15.064' W |
| 1810F     | Medium   | Door Path           | Repair Needed | Full repair  |  | 42°46.022' N | 122°15.064' W |
| 1810G     | Medium   | Door Path           | Repair Needed | Full repair  |  | 42°46.022' N | 122°15.064' W |
| 1810H     | Medium   | Door Path           | Repair Needed | Full repair  |  | 42°46.022' N | 122°15.064' W |
| 1810I     | Medium   | Door Path           | Repair Needed | Full repair  |  | 42°46.022' N | 122°15.064' W |
| 1810J     | Medium   | Door Path           | Repair Needed | Full repair  |  | 42°46.022' N | 122°15.064' W |
| 1810K     | Medium   | Door Path           | Repair Needed | Full repair  |  | 42°46.022' N | 122°15.064' W |
| 1810L     | Medium   | Door Path           | Repair Needed | Full repair  |  | 42°46.022' N | 122°15.064' W |
| 1810M     | Medium   | Door Path           | Repair Needed | Full repair  |  | 42°46.022' N | 122°15.064' W |
| 1810N     | Medium   | Door Path           | Repair Needed | Full repair  |  | 42°46.022' N | 122°15.064' W |
| 1810O     | Medium   | Door Path           | Repair Needed | Full repair  |  | 42°46.022' N | 122°15.064' W |
| 1810P     | Medium   | Door Path           | Repair Needed | Full repair  |  | 42°46.022' N | 122°15.064' W |
| 1810Q     | Medium   | Door Path           | Repair Needed | Full repair  |  | 42°46.022' N | 122°15.064' W |
| 1810R     | Medium   | Door Path           | Repair Needed | Full repair  |  | 42°46.022' N | 122°15.064' W |
| 1810S     | Medium   | Door Path           | Repair Needed | Full repair  |  | 42°46.022' N | 122°15.064' W |
| 1810T     | Medium   | Door Path           | Repair Needed | Full repair  |  | 42°46.022' N | 122°15.064' W |
| 1810U     | Medium   | Door Path           | Repair Needed | Full repair  |  | 42°46.022' N | 122°15.064' W |
| 1810V     | Medium   | Door Path           | Repair Needed | Full repair  |  | 42°46.022' N | 122°15.064' W |
| 1810W     | Medium   | Door Path           | Repair Needed | Full repair  |  | 42°46.022' N | 122°15.064' W |
| 1810X     | Medium   | Door Path           | Repair Needed | Full repair  |  | 42°46.022' N | 122°15.064' W |
| 1810Y     | Medium   | Door Path           | Repair Needed | Full repair  |  | 42°46.022' N | 122°15.064' W |
| 1810Z     | Medium   | Door Path           | Repair Needed | Full repair  |  | 42°46.022' N | 122°15.064' W |
| 1810A     | Medium   | Door Path           | Repair Needed | Full repair  |  | 42°46.022' N | 122°15.064' W |
| 1810B     | Medium   | Door Path           | Repair Needed | Full repair  |  | 42°46.022' N | 122°15.064' W |
| 1810C     | Medium   | Door Path           | Repair Needed | Full repair  |  | 42°46.022' N | 122°15.064' W |
| 1810D     | Medium   | Door Path           | Repair Needed | Full repair  |  | 42°46.022' N | 122°15.064' W |
| 1810E     | Medium   | Door Path           | Repair Needed | Full repair  |  | 42°46.022' N | 122°15.064' W |
| 1810F     | Medium   | Door Path           | Repair Needed | Full repair  |  | 42°46.022' N | 122°15.064' W |
| 1810G     | Medium   | Door Path           | Repair Needed | Full repair  |  | 42°46.022' N | 122°15.064' W |
| 1810H     | Medium   | Door Path           | Repair Needed | Full repair  |  | 42°46.022' N | 122°15.064' W |
| 1810I     | Medium   | Door Path           | Repair Needed | Full repair  |  | 42°46.022' N | 122°15.064' W |
| 1810J     | Medium   | Door Path           | Repair Needed | Full repair  |  | 42°46.022' N | 122°15.064' W |
| 1810K     | Medium   | Door Path           | Repair Needed | Full repair  |  | 42°46.022' N | 122°15.064' W |
| 1810L     | Medium   | Door Path           | Repair Needed | Full repair  |  | 42°46.022' N | 122°15.064' W |
| 1810M     | Medium   | Door Path           | Repair Needed | Full repair  |  | 42°46.022' N | 122°15.064' W |
| 1810N     | Medium   | Door Path           | Repair Needed | Full repair  |  | 42°46.022' N | 122°15.064' W |
| 1810O     | Medium   | Door Path           | Repair Needed | Full repair  |  | 42°46.022' N | 122°15.064' W |
| 1810P     | Medium   | Door Path           | Repair Needed | Full repair  |  | 42°46.022' N | 122°15.064' W |
| 1810Q     | Medium   | Door Path           | Repair Needed | Full repair  |  | 42°46.022' N | 122°15.064' W |
| 1810R     | Medium   | Door Path           | Repair Needed | Full repair  |  | 42°46.022' N | 122°15.064' W |
| 1810S     | Medium   | Door Path           | Repair Needed | Full repair  |  | 42°46.022' N | 122°15.064' W |
| 1810T     | Medium   | Door Path           | Repair Needed | Full repair  |  | 42°46.022' N | 122°15.064' W |
| 1810U     | Medium   | Door Path           | Repair Needed | Full repair  |  | 42°46.022' N | 122°15.064' W |
| 1810V     | Medium   | Door Path           | Repair Needed | Full repair  |  | 42°46.022' N | 122°15.064' W |
| 1810W     | Medium   | Door Path           | Repair Needed | Full repair  |  | 42°46.022' N | 122°15.064' W |
| 1810X     | Medium   | Door Path           | Repair Needed | Full repair  |  | 42°46.022' N | 122°15.064' W |
| 1810Y     | Medium   | Door Path           | Repair Needed | Full repair  |  | 42°46.022' N | 122°15.064' W |
| 1810Z     | Medium   | Door Path           | Repair Needed | Full repair  |  | 42°46.022' N | 122°15.064' W |
| 1810A     | Medium   | Door Path           | Repair Needed | Full repair  |  | 42°46.022' N | 122°15.064' W |
| 1810B     | Medium   | Door Path           | Repair Needed | Full repair  |  | 42°46.022' N | 122°15.064' W |
| 1810C     | Medium   | Door Path           | Repair Needed | Full repair  |  | 42°46.022' N | 122°15.064' W |
| 1810D     | Medium   | Door Path           | Repair Needed | Full repair  |  | 42°46.022' N | 122°15.064' W |
| 1810E     | Medium   | Door Path           | Repair Needed | Full repair  |  | 42°46.022' N | 122°15.064' W |
| 1810F     | Medium   | Door Path           | Repair Needed | Full repair  |  | 42°46.022' N | 122°15.064' W |
| 1810G     | Medium   | Door Path           | Repair Needed | Full repair  |  | 42°46.022' N | 122°15.064' W |
| 1810H     | Medium   | Door Path           | Repair Needed | Full repair  |  | 42°46.022' N | 122°15.064' W |
| 1810I     | Medium   | Door Path           | Repair Needed | Full repair  |  | 42°46.022' N | 122°15.064' W |
| 1810J     | Medium   | Door Path           | Repair Needed | Full repair  |  | 42°46.022' N | 122°15.064' W |
| 1810K     | Medium   | Door Path           | Repair Needed | Full repair  |  | 42°46.022' N | 122°15.064' W |
| 1810L     | Medium   | Door Path           | Repair Needed | Full repair  |  | 42°46.022' N | 122°15.064' W |
| 1810M     | Medium   | Door Path           | Repair Needed | Full repair  |  | 42°46.022' N | 122°15.064' W |
| 1810N     | Medium   | Door Path           | Repair Needed | Full repair  |  | 42°46.022' N | 122°15.064' W |
| 1810O     | Medium   | Door Path           | Repair Needed | Full repair  |  | 42°46.022' N | 122°15.064' W |
| 1810P     | Medium   | Door Path           | Repair Needed | Full repair  |  | 42°46.022' N | 122°15.064' W |
| 1810Q     | Medium   | Door Path           | Repair Needed | Full repair  |  | 42°46.022' N | 122°15.064' W |
| 1810R     | Medium   | Door Path           | Repair Needed | Full repair  |  | 42°46.022' N | 122°15.064' W |
| 1810S     | Medium   | Door Path           | Repair Needed | Full repair  |  | 42°46.022' N | 122°15.064' W |
| 1810T     | Medium   | Door Path           | Repair Needed | Full repair  |  | 42°46.022' N | 122°15.064' W |
| 1810U     | Medium   | Door Path           | Repair Needed | Full repair  |  | 42°46.022' N | 122°15.064' W |
| 1810V     | Medium   | Door Path           | Repair Needed | Full repair  |  | 42°46.022' N | 122°15.064' W |
| 1810W     | Medium   | Door Path           | Repair Needed | Full repair  |  | 42°46.022' N | 122°15.064' W |
| 1810X     | Medium   | Door Path           | Repair Needed | Full repair  |  | 42°46.022' N | 122°15.064' W |
| 1810Y     | Medium   | Door Path           | Repair Needed | Full repair  |  | 42°46.022' N | 122°15.064' W |
| 1810Z     | Medium   | Door Path           | Repair Needed | Full repair  |  | 42°46.022' N | 122°15.064' W |
| 1810A     | Medium   | Door Path           | Repair Needed | Full repair  |  | 42°46.022' N | 122°15.064' W |
| 1810B     | Medium   | Door Path           | Repair Needed | Full repair  |  | 42°46.022' N | 122°15.064' W |
| 1810C     | Medium   | Door Path           | Repair Needed | Full repair  |  | 42°46.022' N | 122°15.064' W |
| 1810D     | Medium   |                     |               |  |  |              |               |