

# Suppression Repair Tiles

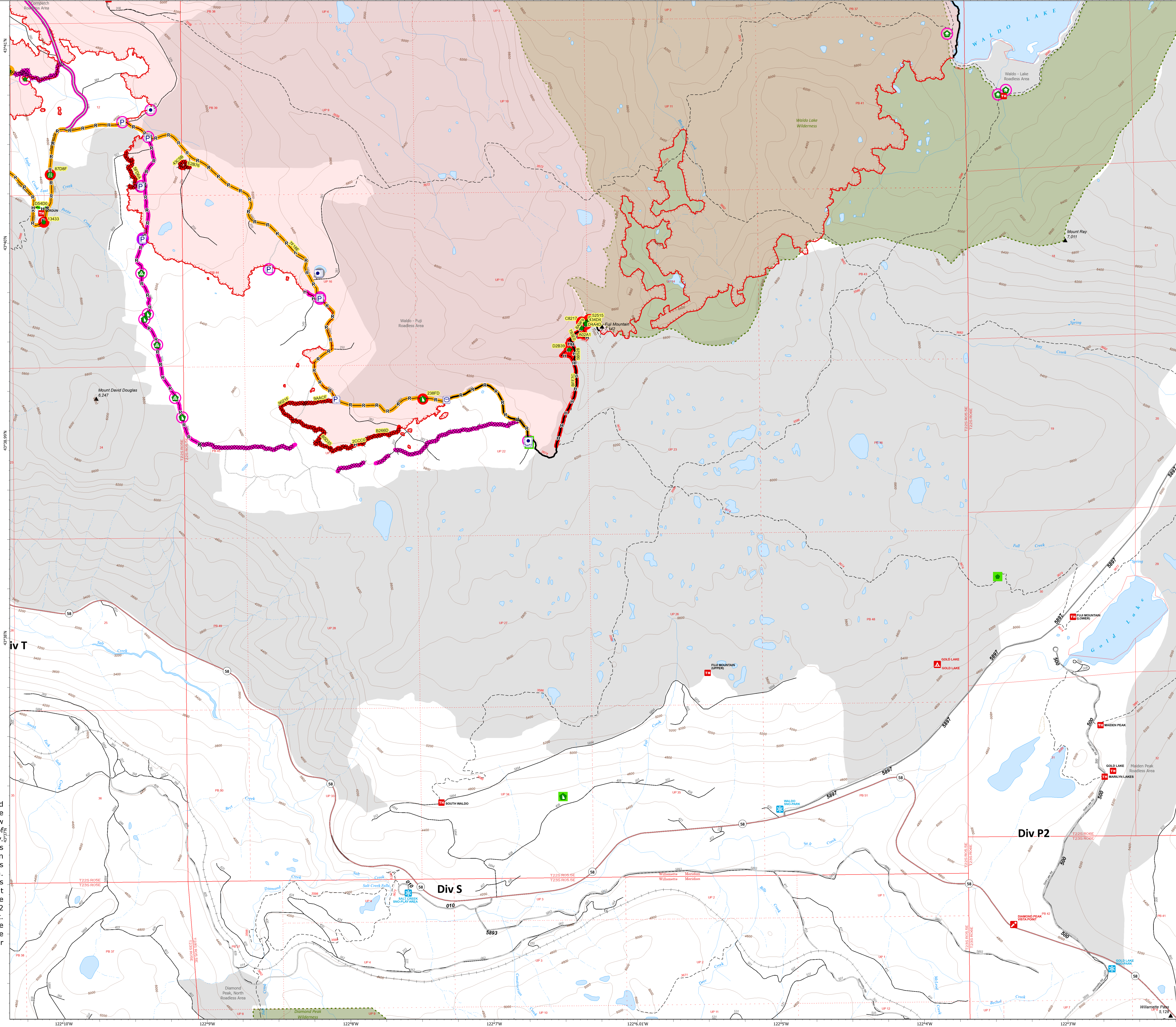
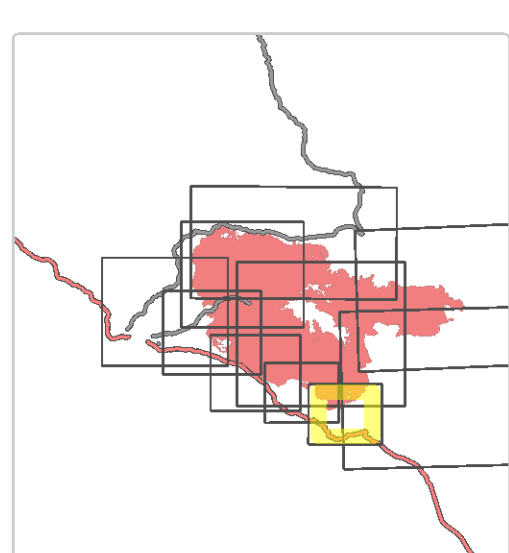
Cedar Creek  
OR-WF-220180  
10/21/2022 24 Hour  
126,890 acres as of 10/19/2022 © 1948  
1:1,100,000

- Accountable Property - Repair Status
- In Use - Fire Management (12)
  - Needs Assessment (2)
  - Completed - Inspected (2)
  - Other - See Comments (1)
- Accountable Property
- Other Property (5)
  - Pump (14)
  - Water Tank (9)
  - In Use - Fire Management (11)
  - Repair Needed (10)
  - In Progress (2)
  - Completed - Inspected (2)
  - Water Development or Draft Site (1)
  - Structure Wrap (3)
  - Road Repair (1)
  - Repair Point (12)
  - Landing or Log Deck (4)
  - Dozer Run (5)
  - Completed Dozer Line (13)
  - Completed Hand Line (8)
  - Completed Road as Line (2)
  - Access or Improved Road (1)
  - In Use - Fire Management (9)
  - Repair Needed (13)
  - In Progress (1)
  - Completed - Inspected (1)
- Containment
- Contained
  - Uncontained
  - Wildfire Daily Fire Perimeter
- Roads
- Secondary Highway
  - Paved Roads
  - Dirt (Not Paved)
  - Paved Road
  - Gravel Road
  - Unimproved Roads
  - Closed Roads
- Wilderness
- Wilderness
  - Roadless Area

**Note:** This map and associated tables have been filtered to only show Repair Points / Lines of Medium or High priority. There exists numerous other features of unknown or low priority repair needs throughout the fire area. The intended use of this map is to define/represent the repair work to be completed during IMT12 oversight of this incident. This map should **NOT** be considered a complete source for repair information.



## Div S



Repair ID	Priority	Point Type	Status	Repairs Needed	Repair Comments	Latitude	Longitude
AD04	High	Repair Point	Repair Needed	Full in berms, fill berms, dig out entrances, cover with slash, water bar as needed		43° 36' 54.1" N	122° 06' 23" W
AD05	High	Repair Point	Repair Needed	Full in berms, cover in slash, dig out entrances (200' observation 107)		43° 36' 51.7" N	122° 06' 24" W
AD06	High	Repair Point	Repair Needed	Full in berms, fill in berms, cover in slash, dig out entrances, water bar as needed (100' observation 107)		43° 36' 54.8" N	122° 06' 24" W
AD07	High	Repair Point	Repair Needed	Full in berms, fill in berms, cover in slash, dig out entrances, water bar as needed (100' observation 107)		43° 36' 58.2" N	122° 06' 23" W
AD08	High	Repair Point	Repair Needed	Full in berms, fill in berms, cover in slash, dig out entrances, water bar as needed (100' observation 107)		43° 36' 52.2" N	122° 06' 23" W
AD09	Medium	Dozer Run	Repair Needed		Full in berms, fill in berms, cover in slash, dig out entrances, water bar as needed. Run available (100' observation 107)	43° 36' 58.8" N	122° 07' 45.2" W
AD10	Medium	Repair Point	Repair Needed	100' observation 107	Run back berms to trail and water bar.	43° 36' 57.1" N	122° 06' 21" W
AD11	Medium	Repair Point	Repair Needed	Full in berms, cover in slash, dig out entrances (200' observation 107)		43° 36' 52.7" N	122° 06' 24" W
AD12	Medium	Repair Point	Repair Needed	Full in berms, cover in slash, dig out entrances, water bar as needed (100' observation 107)		43° 36' 52.0" N	122° 06' 24" W
AD13	Medium	Road Repair	Repair Needed	100' observation 107		43° 36' 52.0" N	122° 06' 24" W

Divs ID	Priority	Line Type	Status	Repairs Needed	Repair Comments	Len (ft)
1236	High	Completed Dozer Line	Repair Needed	F141 107438	Full in berms into contact, water bar and slash 30' (100' obs)	272
1237	High	Completed Dozer Line	Repair Needed	F141 107438	Full in berms into contact, water bar and slash 30' (100' obs)	427
1238	High	Completed Dozer Line	Repair Needed	F141 107438	Full in berms into contact, water bar and slash 30' (100' obs)	1140
1239	High	Completed Dozer Line	Repair Needed	F141 107438		108
1240	High	Completed Dozer Line	Repair Needed	F141 107438		1140
1241	High	Completed Dozer Line	Repair Needed	F141 107438		1140
1242	High	Completed Dozer Line	Completed - Inspected	100' observation 107		362
1243	High	Completed Dozer Line	Repair Needed	100' observation 107	100' observation 107	660
1244	High	Completed Dozer Line	Repair Needed	F141 107438	Full in berms, fill in berms, cover with slash, dig out entrances, water bar as needed	410
1245	High	Completed Dozer Line	Repair Needed	F141 107438	Full in berms, fill in berms, cover with slash, dig out entrances, water bar as needed	221
1246	High	Completed Dozer Line	Repair Needed	F141 107438	Full in berms, fill in berms, cover with slash, dig out entrances, water bar as needed	496
1247	High	Completed Dozer Line	Repair Needed	F141 107438	Full in berms, fill in berms, cover with slash, dig out entrances, water bar as needed	362
1248	Medium	Completed Dozer Line	Repair Needed	F141 107438	Full in berms, fill in berms, cover with slash, dig out entrances, water bar as needed	1144
1249	Medium	Completed Dozer Line	Repair Needed	F141 107438	Full in berms, fill in berms, cover with slash, dig out entrances, water bar as needed	1144
1250	Medium	Completed Dozer Line	In Progress	None		1144