

# Suppression Repair Tiles

Cedar Creek  
OR-WF-220180  
10/21/2022 24 Hour  
126,890 acres at 10/19/2022 © 1948  
1:1,100,000

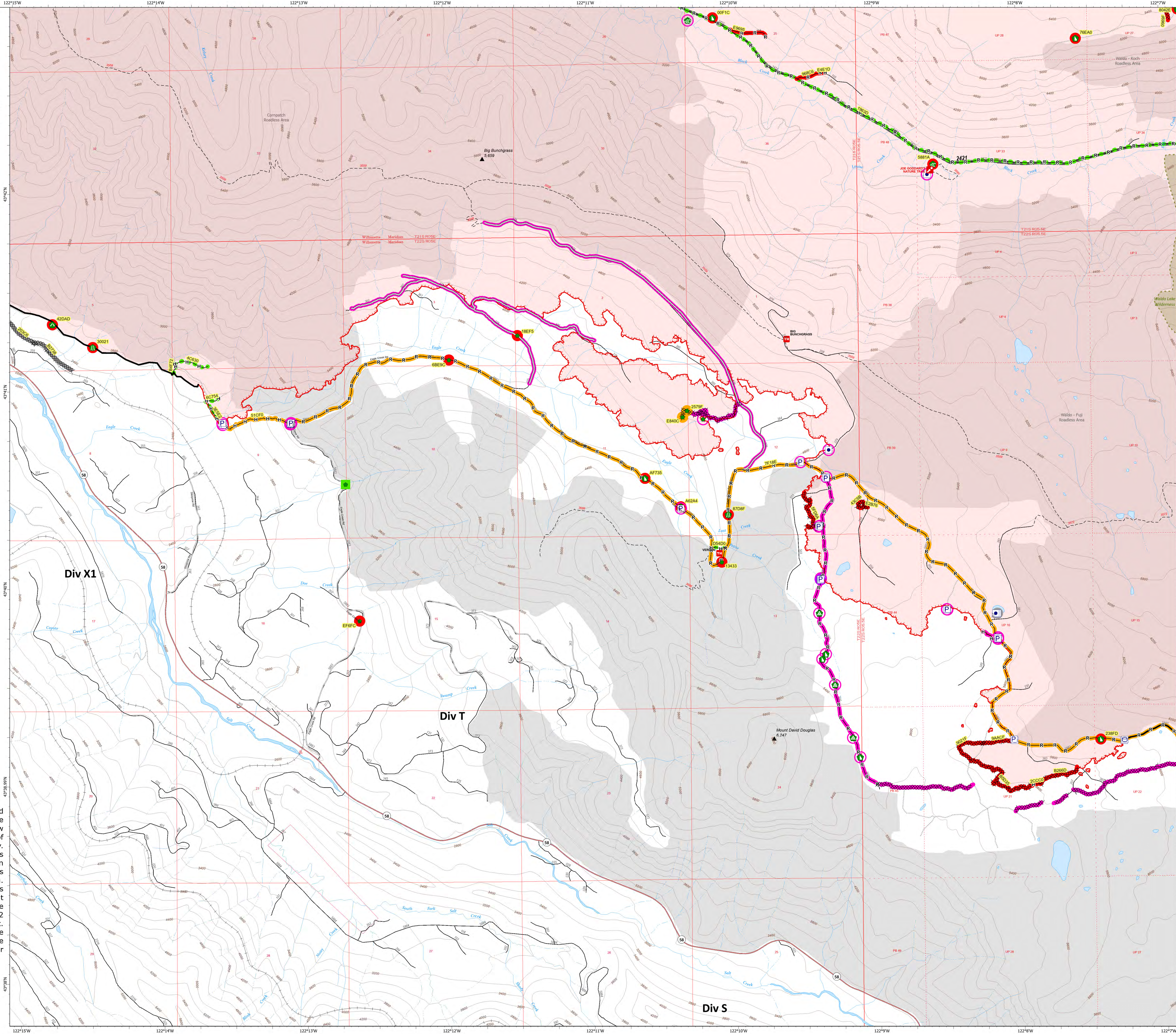
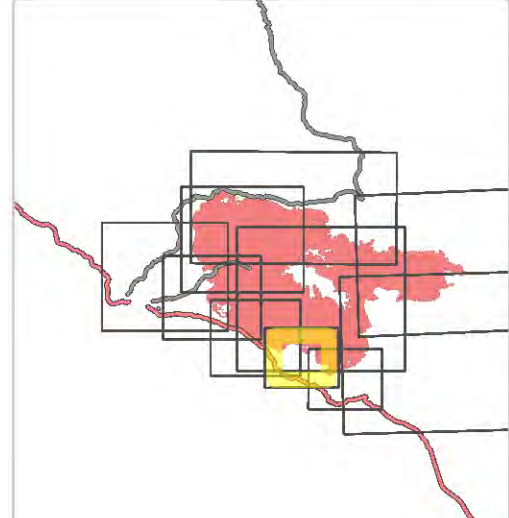
## Div T

- Accountable Property - Repair Status
- In Use - Fire Management (19)
  - Needs Assessment (2)
  - Other - See Comments (1)
- Accountable Property
- Other Property (5)
  - Pump (17)
  - Water Tank (9)
  - In Use - Fire Management (9)
  - Repair Needed (14)
  - In Progress (2)
  - Completed - Inspected (1)
  - Water Development or Draft Site (3)
  - Road Repair (2)
  - Repair Point (8)
  - Landing or Log Deck (4)
  - Dozer Push (8)
  - Culvert (1)
  - Completed Dozer Line (17)
  - Completed Hand Line (19)
  - Completed Road as Line (5)
  - Access or Improved Road (4)
  - In Use - Fire Management (12)
  - Repair Needed (13)
  - In Progress (2)
  - Completed - Inspected (6)
  - Other - See Comments (2)
- Containment
- Contained
  - Uncontained
  - Wildfire Daily Fire Perimeter
- Roads
- Interior Roads
  - Secondary Highway
  - Dirt (Not Paved)
  - Unimproved Roads
  - Closed Roads
- Wilderness
- Wilderness Area
  - Roadless Area

**Note:** This map and associated tables have been filtered to only show Repair Points / Lines of Medium or High priority. There exists numerous other features of unknown or low priority repair needs throughout the fire area. The intended use of this map is to define/represent the repair work to be completed during IMT12 oversight of this incident. This map should **NOT** be considered a complete source for repair information.



## Div T



Repair ID	Priority	Point Type	Status	Repairs Needed	Repair Comments	Latitude	Longitude
209P	High	Repair Point	In Progress	PULL REPAIR	Area is of unimproved material and requires of...	43°46'07.7" N	122°16'10.0" W
209H	High	Repair Point	Repair Needed	PULL REPAIR, culvert blocked	Area is of unimproved material and requires of...	43°46'07.7" N	122°16'10.0" W
209A	High	Water Development or Draft Site	Repair Needed	Water tank to be replaced with 1000 gal tank...	Area is of unimproved material and requires of...	43°46'07.7" N	122°16'10.0" W
209B	High	Water Tank	Repair Needed	Water tank to be replaced with 1000 gal tank...	Area is of unimproved material and requires of...	43°46'07.7" N	122°16'10.0" W
209C	High	Water Tank	Repair Needed	Water tank to be replaced with 1000 gal tank...	Area is of unimproved material and requires of...	43°46'07.7" N	122°16'10.0" W
209D	High	Water Tank	Repair Needed	Water tank to be replaced with 1000 gal tank...	Area is of unimproved material and requires of...	43°46'07.7" N	122°16'10.0" W
209E	High	Water Tank	Repair Needed	Water tank to be replaced with 1000 gal tank...	Area is of unimproved material and requires of...	43°46'07.7" N	122°16'10.0" W
209F	High	Water Tank	Repair Needed	Water tank to be replaced with 1000 gal tank...	Area is of unimproved material and requires of...	43°46'07.7" N	122°16'10.0" W
209G	High	Water Tank	Repair Needed	Water tank to be replaced with 1000 gal tank...	Area is of unimproved material and requires of...	43°46'07.7" N	122°16'10.0" W
209I	High	Water Tank	Repair Needed	Water tank to be replaced with 1000 gal tank...	Area is of unimproved material and requires of...	43°46'07.7" N	122°16'10.0" W
209J	High	Water Tank	Repair Needed	Water tank to be replaced with 1000 gal tank...	Area is of unimproved material and requires of...	43°46'07.7" N	122°16'10.0" W
209K	High	Water Tank	Repair Needed	Water tank to be replaced with 1000 gal tank...	Area is of unimproved material and requires of...	43°46'07.7" N	122°16'10.0" W
209L	High	Water Tank	Repair Needed	Water tank to be replaced with 1000 gal tank...	Area is of unimproved material and requires of...	43°46'07.7" N	122°16'10.0" W
209M	High	Water Tank	Repair Needed	Water tank to be replaced with 1000 gal tank...	Area is of unimproved material and requires of...	43°46'07.7" N	122°16'10.0" W
209N	High	Water Tank	Repair Needed	Water tank to be replaced with 1000 gal tank...	Area is of unimproved material and requires of...	43°46'07.7" N	122°16'10.0" W
209O	High	Water Tank	Repair Needed	Water tank to be replaced with 1000 gal tank...	Area is of unimproved material and requires of...	43°46'07.7" N	122°16'10.0" W
209P	High	Water Tank	Repair Needed	Water tank to be replaced with 1000 gal tank...	Area is of unimproved material and requires of...	43°46'07.7" N	122°16'10.0" W
209Q	High	Water Tank	Repair Needed	Water tank to be replaced with 1000 gal tank...	Area is of unimproved material and requires of...	43°46'07.7" N	122°16'10.0" W
209R	High	Water Tank	Repair Needed	Water tank to be replaced with 1000 gal tank...	Area is of unimproved material and requires of...	43°46'07.7" N	122°16'10.0" W
209S	High	Water Tank	Repair Needed	Water tank to be replaced with 1000 gal tank...	Area is of unimproved material and requires of...	43°46'07.7" N	122°16'10.0" W
209T	High	Water Tank	Repair Needed	Water tank to be replaced with 1000 gal tank...	Area is of unimproved material and requires of...	43°46'07.7" N	122°16'10.0" W
209U	High	Water Tank	Repair Needed	Water tank to be replaced with 1000 gal tank...	Area is of unimproved material and requires of...	43°46'07.7" N	122°16'10.0" W
209V	High	Water Tank	Repair Needed	Water tank to be replaced with 1000 gal tank...	Area is of unimproved material and requires of...	43°46'07.7" N	122°16'10.0" W
209W	High	Water Tank	Repair Needed	Water tank to be replaced with 1000 gal tank...	Area is of unimproved material and requires of...	43°46'07.7" N	122°16'10.0" W
209X	High	Water Tank	Repair Needed	Water tank to be replaced with 1000 gal tank...	Area is of unimproved material and requires of...	43°46'07.7" N	122°16'10.0" W
209Y	High	Water Tank	Repair Needed	Water tank to be replaced with 1000 gal tank...	Area is of unimproved material and requires of...	43°46'07.7" N	122°16'10.0" W
209Z	High	Water Tank	Repair Needed	Water tank to be replaced with 1000 gal tank...	Area is of unimproved material and requires of...	43°46'07.7" N	122°16'10.0" W

Repair ID	Priority	Line Type	Status	Repairs Needed	Repair Comments	Len (ft)
209A	High	Completed Dozer Line	Repair Needed	PULL REPAIR	pull beam into contour, stabilize, spread slash and seed. 10/22/22 24	372
209B	High	Completed Dozer Line	Repair Needed	PULL REPAIR	pull beam into contour, stabilize, spread slash and seed. 10/22/22 24	427
209C	High	Completed Dozer Line	Repair Needed	PULL REPAIR	pull beam into contour, stabilize, spread slash and seed. 10/22/22 24	454
209D	High	Completed Dozer Line	Repair Needed	PULL REPAIR	pull beam into contour, stabilize, spread slash and seed. 10/22/22 24	498
209E	High	Completed Dozer Line	Repair Needed	PULL REPAIR	pull beam into contour, stabilize, spread slash and seed. 10/22/22 24	545
209F	High	Completed Dozer Line	Repair Needed	PULL REPAIR	pull beam into contour, stabilize, spread slash and seed. 10/22/22 24	600
209G	High	Completed Dozer Line	Repair Needed	PULL REPAIR	pull beam into contour, stabilize, spread slash and seed. 10/22/22 24	660
209H	High	Completed Dozer Line	Repair Needed	PULL REPAIR	pull beam into contour, stabilize, spread slash and seed. 10/22/22 24	720
209I	High	Completed Dozer Line	Repair Needed	PULL REPAIR	pull beam into contour, stabilize, spread slash and seed. 10/22/22 24	780
209J	High	Completed Dozer Line	Repair Needed	PULL REPAIR	pull beam into contour, stabilize, spread slash and seed. 10/22/22 24	840
209K	High	Completed Dozer Line	Repair Needed	PULL REPAIR	pull beam into contour, stabilize, spread slash and seed. 10/22/22 24	900
209L	High	Completed Dozer Line	Repair Needed	PULL REPAIR	pull beam into contour, stabilize, spread slash and seed. 10/22/22 24	960
209M	High	Completed Dozer Line	Repair Needed	PULL REPAIR	pull beam into contour, stabilize, spread slash and seed. 10/22/22 24	1020
209N	High	Completed Dozer Line	Repair Needed	PULL REPAIR	pull beam into contour, stabilize, spread slash and seed. 10/22/22 24	1080
209O	High	Completed Dozer Line	Repair Needed	PULL REPAIR	pull beam into contour, stabilize, spread slash and seed. 10/22/22 24	1140
209P	High	Completed Dozer Line	Repair Needed	PULL REPAIR	pull beam into contour, stabilize, spread slash and seed. 10/22/22 24	1200
209Q	High	Completed Dozer Line	Repair Needed	PULL REPAIR	pull beam into contour, stabilize, spread slash and seed. 10/22/22 24	1260
209R	High	Completed Dozer Line	Repair Needed	PULL REPAIR	pull beam into contour, stabilize, spread slash and seed. 10/22/22 24	1320
209S	High	Completed Dozer Line	Repair Needed	PULL REPAIR	pull beam into contour, stabilize, spread slash and seed. 10/22/22 24	1380
209T	High	Completed Dozer Line	Repair Needed	PULL REPAIR	pull beam into contour, stabilize, spread slash and seed. 10/22/22 24	1440
209U	High	Completed Dozer Line	Repair Needed	PULL REPAIR	pull beam into contour, stabilize, spread slash and seed. 10/22/22 24	1500
209V	High	Completed Dozer Line	Repair Needed	PULL REPAIR	pull beam into contour, stabilize, spread slash and seed. 10/22/22 24	1560
209W	High	Completed Dozer Line	Repair Needed	PULL REPAIR	pull beam into contour, stabilize, spread slash and seed. 10/22/22 24	1620
209X	High	Completed Dozer Line	Repair Needed	PULL REPAIR	pull beam into contour, stabilize, spread slash and seed. 10/22/22 24	1680
209Y	High	Completed Dozer Line	Repair Needed	PULL REPAIR	pull beam into contour, stabilize, spread slash and seed. 10/22/22 24	1740
209Z	High	Completed Dozer Line	Repair Needed	PULL REPAIR	pull beam into contour, stabilize, spread slash and seed. 10/22/22 24	1800