

Suppression Repair Tiles

Cedar Creek
OR-WF-220180
10/21/2022 24 Hour
126,890 acres as of 10/19/2022 © 1948
1:1,100,000

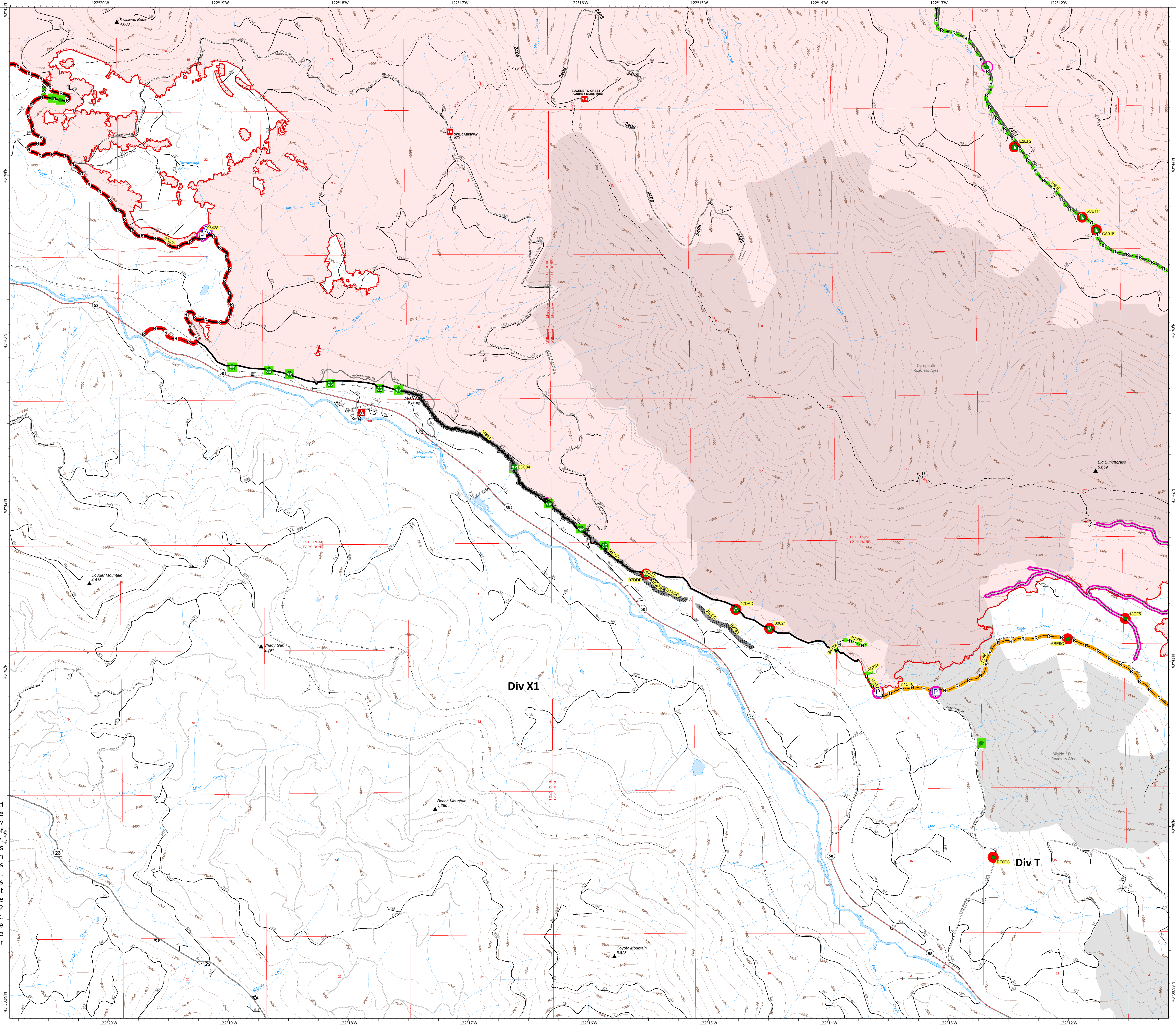
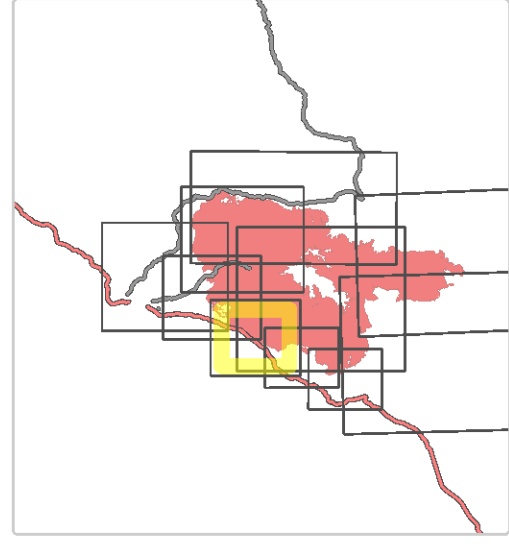
Div X1

- Accountable Property - Repair Status
- In Use - Fire Management (7)
- Accountable Property
- Other Property (1)
 - Pump (4)
 - Water Tank (2)
 - In Use - Fire Management (3)
 - Repair Needed (10)
 - Completed - Inspected (13)
 - Other - See Comments (1)
- Water Development or Draft Site (1)
- Stream Crossing (11)
 - Road Repair (1)
 - Repair Point (9)
 - Dozer Push (3)
 - Culvert (1)
 - Water Source (1)
- Completed Dozer Line (9)
- Completed Hand Line (6)
 - Completed Road as Line (3)
 - Access or Improved Road (4)
 - In Use - Fire Management (5)
 - Repair Needed (1)
 - In Progress (2)
 - Completed - Inspected (6)
 - Other - See Comments (7)
- Contained
- Uncountained
- Wildfire Daily Fire Perimeter
- Interior Roads
- Secondary Highway
 - Paved Roads
 - Dirt (Not Paved)
 - Paved Road
 - Gravel Road
 - Unimproved Roads
 - Closed Roads
 - Roadless Area

Note: This map and associated tables have been filtered to only show Repair Points / Lines of Medium or High priority. There exists numerous other features of unknown or low priority repair needs throughout the fire area. The intended use of this map is to define/represent the repair work to be completed during IMT12 oversight of this incident. This map should **NOT** be considered a complete source for repair information.



Div X1



Repair ID	Priority	Point Type	Status	Repairs Needed	Repair Comments	Latitude	Longitude
EXF01	High	Road Repair	Repair Needed	Full Repair, Culvert replacement	Full Repair, Culvert replacement	43° 41.222' N	122° 14.422' W
EXF02	Medium	Culvert	Repair Needed	Full Repair	Full Repair, Culvert replacement	43° 41.222' N	122° 14.422' W
EXF03	Medium	Door Push	Repair Needed	Full Repair	Full Repair, Culvert replacement	43° 41.222' N	122° 14.422' W
EXF04	Medium	Door Push	Repair Needed	Full Repair	Full Repair, Culvert replacement	43° 41.222' N	122° 14.422' W
EXF05	Medium	Door Push	Repair Needed	Full Repair	Full Repair, Culvert replacement	43° 41.222' N	122° 14.422' W
EXF06	Medium	Repair Point	Repair Needed	Full Repair	Full Repair, Culvert replacement	43° 41.222' N	122° 14.422' W
EXF07	Medium	Repair Point	Repair Needed	Full Repair	Full Repair, Culvert replacement	43° 41.222' N	122° 14.422' W
EXF08	Medium	Repair Point	Repair Needed	Full Repair	Full Repair, Culvert replacement	43° 41.222' N	122° 14.422' W
EXF09	Medium	Repair Point	Repair Needed	Full Repair	Full Repair, Culvert replacement	43° 41.222' N	122° 14.422' W
EXF10	Medium	Stream Crossing	Repair Needed	Full Repair	Full Repair, Culvert replacement	43° 41.222' N	122° 14.422' W
EXF11	Medium	Stream Crossing	Repair Needed	Full Repair	Full Repair, Culvert replacement	43° 41.222' N	122° 14.422' W

Divide ID	Priority	Line Type	Status	Repairs Needed	Repair Comments	Len (ft)
EXF01	High	Completed Dozer Line	Completed	Full repair door line, water bar and full back berm, spread stone, digline and reservoir enhanced, clear and reshape ditch NEP Data 10/1	door full repair 10.10.22, 10/10/2022 10/1	127
EXF02	High	Completed Dozer Line	Completed	Stone, clear stream	Clear ditch, reshaped and covered berm	4500
EXF03	High	Completed Dozer Line	Repair Needed	Clear ditch and culvert independently, 1/2 in	1/2 in culvert around dip, low drainage and open. Clear ditch and culverts, 750 to spot rock. Grate and cul. RCP at 50 yds. RCP of Multiple broken weirs along road. CTRK, SIDA, BIRD, VEDU, WIR	4076
EXF04	Medium	Completed Dozer Line	Other - See Comments	As of 10/21 - subunit will take responsibility of dozer line. This location annually, just FIRE MANAGEMENT 10/21 REPAIR	road to clear wash, pull fire, weed and trash (discarded) and replaced out. BP 8/27	18611
EXF05	Medium	Completed Dozer Line	Other - See Comments	None needed	As of 10/21 - subunit will take responsibility of dozer line. This location annually, just FIRE MANAGEMENT 10/21 REPAIR	1468
EXF06	Medium	Completed Dozer Line	Other - See Comments	None needed	As of 10/21 - subunit will take responsibility of dozer line. This location annually, just FIRE MANAGEMENT 10/21 REPAIR	1114
EXF07	Medium	Completed Dozer Line	Other - See Comments	None needed	As of 10/21 - subunit will take responsibility of dozer line. This location annually, just FIRE MANAGEMENT 10/21 REPAIR	2028
EXF08	Medium	Completed Dozer Line	Other - See Comments	None needed	As of 10/21 - subunit will take responsibility of dozer line. This location annually, just FIRE MANAGEMENT 10/21 REPAIR	2463
EXF09	Medium	Completed Dozer Line	Other - See Comments	None needed	As of 10/21 - subunit will take responsibility of dozer line. This location annually, just FIRE MANAGEMENT 10/21 REPAIR	1124
EXF10	Medium	Completed Dozer Line	Other - See Comments	None needed	As of 10/21 - subunit will take responsibility of dozer line. This location annually, just FIRE MANAGEMENT 10/21 REPAIR	475
EXF11	Medium	Completed Dozer Line	Other - See Comments	None needed	As of 10/21 - subunit will take responsibility of dozer line. This location annually, just FIRE MANAGEMENT 10/21 REPAIR	1076
EXF12	Medium	Completed Dozer Line	Other - See Comments	None needed	As of 10/21 - subunit will take responsibility of dozer line. This location annually, just FIRE MANAGEMENT 10/21 REPAIR	136
EXF13	Medium	Completed Dozer Line	Other - See Comments	None needed	As of 10/21 - subunit will take responsibility of dozer line. This location annually, just FIRE MANAGEMENT 10/21 REPAIR	1897
EXF14	Medium	Completed Dozer Line	Other - See Comments	None needed	As of 10/21 - subunit will take responsibility of dozer line. This location annually, just FIRE MANAGEMENT 10/21 REPAIR	414
EXF15	Medium	Completed Dozer Line	Other - See Comments	None needed	As of 10/21 - subunit will take responsibility of dozer line. This location annually, just FIRE MANAGEMENT 10/21 REPAIR	2389
EXF16	Medium	Completed Dozer Line	Other - See Comments	None needed	As of 10/21 - subunit will take responsibility of dozer line. This location annually, just FIRE MANAGEMENT 10/21 REPAIR	4281