

Suppression Repair Tiles

Cedar Creek
OR-WF-220180
10/21/2022 24 Hour
126,890 acres at 10/19/2022 @ 1948
1:1,100,000

Div X2

- Accountable Property - Repair Status
In Use - Fire Management (3)
Accountable Property
Pump (2)
Water Tank (1)
In Use - Fire Management (3)
Repair Needed (4)
Completed - Inspected (50)
No Repair Needed (1)
Other - See Comments (1)
Other (1)
Water Development or Draft Site (1)
Stream Crossing (10)
Repair Point (38)
Landing or Log Deck (1)
Dozer Path (2)
Culvert (5)
Water Source (1)
Completed Dozer Line (7)
Completed Fuel Break (1)
Completed Hand Line (1)
Completed Mixed Construction Line (1)
Completed Road as Line (3)
Access or Improved Road (1)
In Use - Fire Management (1)
Repair Needed (2)
In Progress (1)
Completed - Inspected (6)
Other - See Comments (4)
Contained
Uncountained
Wildfire Daily Fire Perimeter
Interior Roads
Secondary Highway
Paved Roads
Dirt (Not Paved)
Paved Road
Gravel Road
Unimproved Roads
Closed Roads
Roadless Area

Note: This map and associated tables have been filtered to only show Repair Points / Lines of Medium or High priority. There exists numerous other features of unknown or low priority repair needs throughout the fire area. The intended use of this map is to define/represent the repair work to be completed during IMT12 oversight of this incident. This map should NOT be considered a complete source for repair information.



Div X2

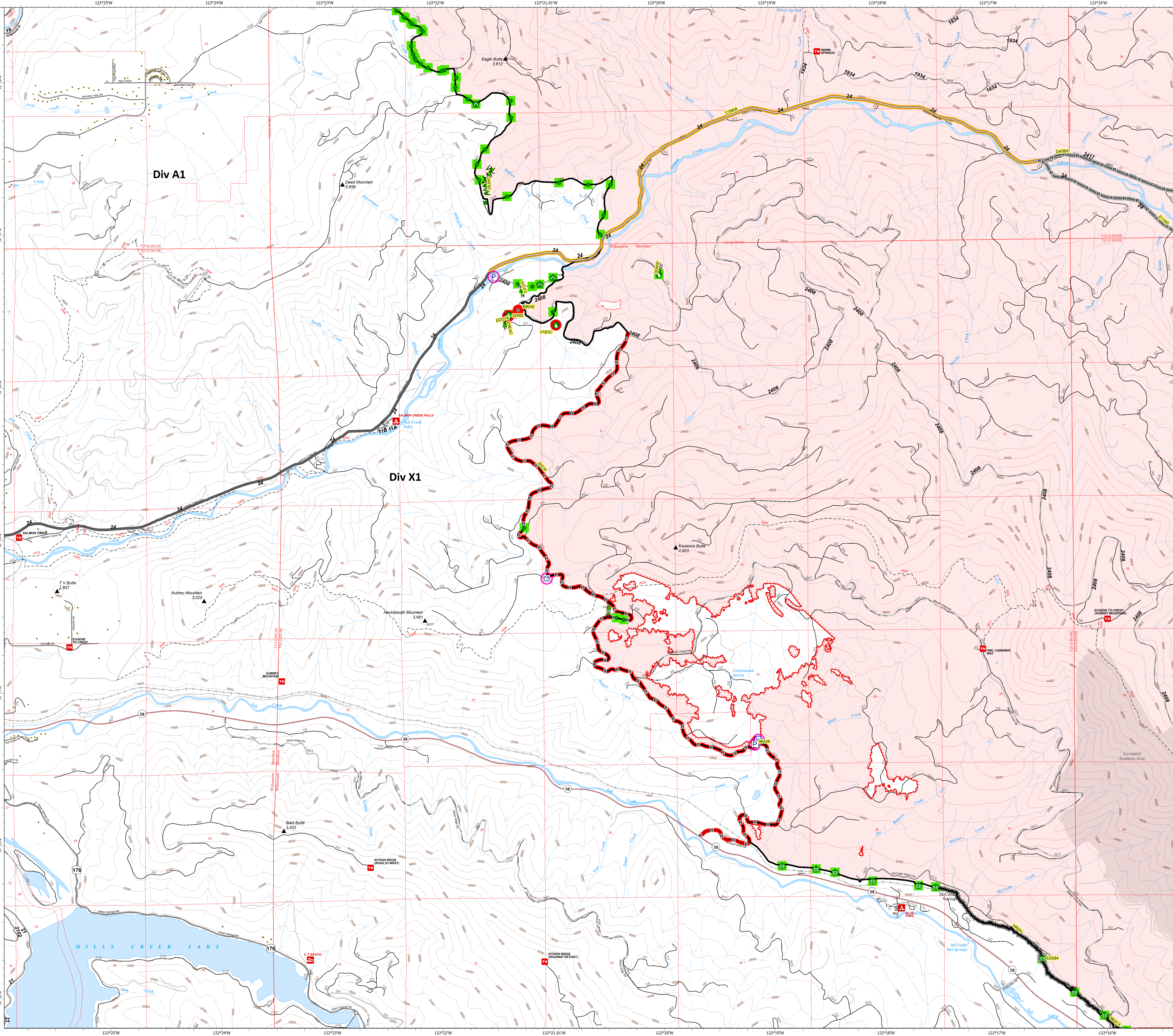
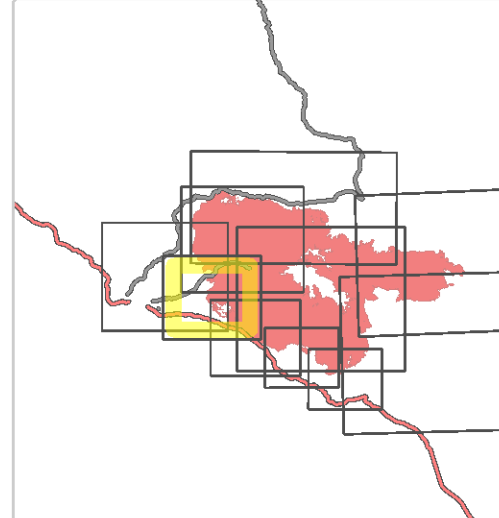


Table with 6 columns: Repair ID, Priority, Point Type, Status, Repairs Needed, Repair Comments. Contains detailed notes for specific repair points.

Table with 6 columns: Repair ID, Priority, Line Type, Status, Repairs Needed, Repair Comments, Len (ft). Contains a list of repair points with their respective details and lengths.