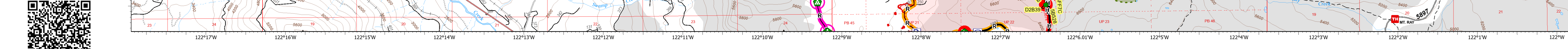


**Suppression Repair Tiles**  
 Cedar Creek  
 OR-WF-220180  
 10/27/2022 24 Hour  
 126,890 acres as of 10/19/2022 @ 1948  
 1:11,100,000  
**Interior**

- Accountable Property - Repair Status**
- In Use - Fire Management (22)
  - Needs Assessment (2)
  - Other - See Comments (1)
- Accountable Property**
- Other Property (7)
  - Pump (7)
  - Water Tank (9)
  - In Use - Fire Management (31)
  - Repair Needed (80)
  - In Progress (2)
  - Completed - Inspected (10)
  - Other - See Comments (1)
- Helispot (2)**
- Sling Site (4)
  - Value at Risk (3)
  - Water Development or Draft Site (3)
  - Structure Wrap (20)
  - Stream Crossing (7)
  - Road Repair (2)
  - Road Point (2)
  - Landing or Log Deck (5)
  - Door Path (50)
  - Culvert (8)
  - Hazard (1)
- Completed Doser Line (34)**
- Completed Hand Line (45)**
- Access or Improved Road (8)**
- In Use - Fire Management (9)**
- Needs Assessment (5)**
- Repair Needed (59)**
- In Progress (3)**
- Completed - Ready for Inspection (1)**
- Completed - Inspected (11)**
- Other - See Comments (9)**
- Contained**
- Uncounted**
- Wildfire Daily Fire Perimeter**
- Interior/Roads**
- Secondary Highway
  - Paved Roads
  - Dirt (Not Paved)
  - Paved Road
  - Gravel Road
  - Unimproved Roads
  - Closed Roads
  - Wilderness
  - Roadless Area

**Note:** This map and associated tables have been filtered to only show Repair Points / Lines of Medium or High priority. There exists numerous other features of low priority repair needs throughout the fire area. The intended use of this map is to define/represent the repair work to be completed during IMT12 oversight of this incident. This map should **NOT** be considered a complete source for repair information.



**Interior**

Repair ID	Priority	Line Type	Status	Repairs Needed	Repair Comments	Len (ft)
1288	High	Access or Improved Road	In Progress	Clear debris	Clear debris from road	2075
1289	High	Access or Improved Road	Repair Needed	Clear debris	Clear debris from road	8003
1290	High	Access or Improved Road	Repair Needed	Clear debris	Clear debris from road	2534
1291	High	Completed Doser Line	Completed - Inspected	None	None	534
1292	High	Completed Doser Line	Repair Needed	None	None	750
1293	High	Completed Doser Line	Repair Needed	None	None	455
1294	High	Completed Doser Line	Repair Needed	None	None	96
1295	High	Completed Doser Line	Repair Needed	None	None	367
1296	High	Completed Doser Line	Repair Needed	None	None	1014
1297	High	Completed Doser Line	Repair Needed	None	None	240
1298	High	Completed Doser Line	Repair Needed	None	None	330
1299	High	Completed Doser Line	Repair Needed	None	None	185
1300	High	Completed Doser Line	Repair Needed	None	None	750
1301	High	Completed Doser Line	Repair Needed	None	None	455
1302	High	Completed Doser Line	Repair Needed	None	None	96
1303	High	Completed Doser Line	Repair Needed	None	None	367
1304	High	Completed Doser Line	Repair Needed	None	None	1014
1305	High	Completed Doser Line	Repair Needed	None	None	240
1306	High	Completed Doser Line	Repair Needed	None	None	330
1307	High	Completed Doser Line	Repair Needed	None	None	185
1308	High	Completed Doser Line	Repair Needed	None	None	750
1309	High	Completed Doser Line	Repair Needed	None	None	455
1310	High	Completed Doser Line	Repair Needed	None	None	96
1311	High	Completed Doser Line	Repair Needed	None	None	367
1312	High	Completed Doser Line	Repair Needed	None	None	1014
1313	High	Completed Doser Line	Repair Needed	None	None	240
1314	High	Completed Doser Line	Repair Needed	None	None	330
1315	High	Completed Doser Line	Repair Needed	None	None	185
1316	High	Completed Doser Line	Repair Needed	None	None	750
1317	High	Completed Doser Line	Repair Needed	None	None	455
1318	High	Completed Doser Line	Repair Needed	None	None	96
1319	High	Completed Doser Line	Repair Needed	None	None	367
1320	High	Completed Doser Line	Repair Needed	None	None	1014
1321	High	Completed Doser Line	Repair Needed	None	None	240
1322	High	Completed Doser Line	Repair Needed	None	None	330
1323	High	Completed Doser Line	Repair Needed	None	None	185
1324	High	Completed Doser Line	Repair Needed	None	None	750
1325	High	Completed Doser Line	Repair Needed	None	None	455
1326	High	Completed Doser Line	Repair Needed	None	None	96
1327	High	Completed Doser Line	Repair Needed	None	None	367
1328	High	Completed Doser Line	Repair Needed	None	None	1014
1329	High	Completed Doser Line	Repair Needed	None	None	240
1330	High	Completed Doser Line	Repair Needed	None	None	330
1331	High	Completed Doser Line	Repair Needed	None	None	185
1332	High	Completed Doser Line	Repair Needed	None	None	750
1333	High	Completed Doser Line	Repair Needed	None	None	455
1334	High	Completed Doser Line	Repair Needed	None	None	96
1335	High	Completed Doser Line	Repair Needed	None	None	367
1336	High	Completed Doser Line	Repair Needed	None	None	1014
1337	High	Completed Doser Line	Repair Needed	None	None	240
1338	High	Completed Doser Line	Repair Needed	None	None	330
1339	High	Completed Doser Line	Repair Needed	None	None	185
1340	High	Completed Doser Line	Repair Needed	None	None	750
1341	High	Completed Doser Line	Repair Needed	None	None	455
1342	High	Completed Doser Line	Repair Needed	None	None	96
1343	High	Completed Doser Line	Repair Needed	None	None	367
1344	High	Completed Doser Line	Repair Needed	None	None	1014
1345	High	Completed Doser Line	Repair Needed	None	None	240
1346	High	Completed Doser Line	Repair Needed	None	None	330
1347	High	Completed Doser Line	Repair Needed	None	None	185
1348	High	Completed Doser Line	Repair Needed	None	None	750
1349	High	Completed Doser Line	Repair Needed	None	None	455
1350	High	Completed Doser Line	Repair Needed	None	None	96
1351	High	Completed Doser Line	Repair Needed	None	None	367
1352	High	Completed Doser Line	Repair Needed	None	None	1014
1353	High	Completed Doser Line	Repair Needed	None	None	240
1354	High	Completed Doser Line	Repair Needed	None	None	330
1355	High	Completed Doser Line	Repair Needed	None	None	185
1356	High	Completed Doser Line	Repair Needed	None	None	750
1357	High	Completed Doser Line	Repair Needed	None	None	455
1358	High	Completed Doser Line	Repair Needed	None	None	96
1359	High	Completed Doser Line	Repair Needed	None	None	367
1360	High	Completed Doser Line	Repair Needed	None	None	1014
1361	High	Completed Doser Line	Repair Needed	None	None	240
1362	High	Completed Doser Line	Repair Needed	None	None	330
1363	High	Completed Doser Line	Repair Needed	None	None	185
1364	High	Completed Doser Line	Repair Needed	None	None	750
1365	High	Completed Doser Line	Repair Needed	None	None	455
1366	High	Completed Doser Line	Repair Needed	None	None	96
1367	High	Completed Doser Line	Repair Needed	None	None	367
1368	High	Completed Doser Line	Repair Needed	None	None	1014
1369	High	Completed Doser Line	Repair Needed	None	None	240
1370	High	Completed Doser Line	Repair Needed	None	None	330
1371	High	Completed Doser Line	Repair Needed	None	None	185
1372	High	Completed Doser Line	Repair Needed	None	None	750
1373	High	Completed Doser Line	Repair Needed	None	None	455
1374	High	Completed Doser Line	Repair Needed	None	None	96
1375	High	Completed Doser Line	Repair Needed	None	None	367
1376	High	Completed Doser Line	Repair Needed	None	None	1014
1377	High	Completed Doser Line	Repair Needed	None	None	240
1378	High	Completed Doser Line	Repair Needed	None	None	330
1379	High	Completed Doser Line	Repair Needed	None	None	185
1380	High	Completed Doser Line	Repair Needed	None	None	750
1381	High	Completed Doser Line	Repair Needed	None	None	455
1382	High	Completed Doser Line	Repair Needed	None	None	96
1383	High	Completed Doser Line	Repair Needed	None	None	367
1384	High	Completed Doser Line	Repair Needed	None	None	1014
1385	High	Completed Doser Line	Repair Needed	None	None	240
1386	High	Completed Doser Line	Repair Needed	None	None	330
1387	High	Completed Doser Line	Repair Needed	None	None	185
1388	High	Completed Doser Line	Repair Needed	None	None	750
1389	High	Completed Doser Line	Repair Needed	None	None	455
1390	High	Completed Doser Line	Repair Needed	None	None	96
1391	High	Completed Doser Line	Repair Needed	None	None	367
1392	High	Completed Doser Line	Repair Needed	None	None	1014
1393	High	Completed Doser Line	Repair Needed	None	None	240
1394	High	Completed Doser Line	Repair Needed	None	None	330
1395	High	Completed Doser Line	Repair Needed	None	None	185
1396	High	Completed Doser Line	Repair Needed	None	None	750
1397	High	Completed Doser Line	Repair Needed	None	None	455
1398	High	Completed Doser Line	Repair Needed	None	None	96
1399	High	Completed Doser Line	Repair Needed	None	None	367
1400	High	Completed Doser Line	Repair Needed	None	None	1014
1401	High	Completed Doser Line	Repair Needed	None	None	240
1402	High	Completed Doser Line	Repair Needed	None	None	330
1403	High	Completed Doser Line	Repair Needed	None	None	185
1404	High	Completed Doser Line	Repair Needed	None	None	750
1405	High	Completed Doser Line	Repair Needed	None	None	455
1406	High	Completed Doser Line	Repair Needed	None	None	96
1407	High	Completed Doser Line	Repair Needed	None	None	367
1408	High	Completed Doser Line	Repair Needed	None	None	1014
1409	High	Completed Doser Line	Repair Needed	None	None	240
1410	High	Completed Doser Line	Repair Needed	None	None	330
1411	High	Completed Doser Line	Repair Needed	None	None	185
1412	High	Completed Doser Line	Repair Needed	None	None	750
1413	High	Completed Doser Line	Repair Needed	None	None	455
1414	High	Completed Doser Line	Repair Needed	None	None	96
1415	High	Completed Doser Line	Repair Needed	None	None	367
1416	High	Completed Doser Line	Repair Needed	None	None	1014
1417	High	Completed Doser Line	Repair Needed	None	None	240
1418	High	Completed Doser Line	Repair Needed	None	None	330
1419	High	Completed Doser Line	Repair Needed	None	None	185
1420	High	Completed Doser Line	Repair Needed	None	None	750
1421	High	Completed Doser Line	Repair Needed	None	None	455
1422	High	Completed Doser Line	Repair Needed	None	None	96
1423	High	Completed Doser Line	Repair Needed	None	None	367
1424	High	Completed Doser Line	Repair Needed	None	None	1014
1425	High	Completed Doser Line	Repair Needed	None	None	240
1426	High	Completed Doser Line	Repair Needed	None	None	330
1427	High	Completed Doser Line	Repair Needed	None	None	185
1428	High	Completed Doser Line	Repair Needed	None	None	750
1429	High	Completed Doser Line	Repair Needed	None	None	455
1430	High	Completed Doser Line	Repair Needed	None	None	96
1431	High	Completed Doser Line	Repair Needed	None	None	367
1432	High	Completed Doser Line	Repair Needed	None	None	1014
1433	High	Completed Doser Line	Repair Needed	None	None	240
1434	High	Completed Doser Line	Repair Needed	None	None	330
1435	High	Completed Doser Line	Repair Needed	None	None	185
1436	High	Completed Doser Line	Repair Needed	None	None	750
1437	High	Completed Doser Line	Repair Needed	None	None	455
1438	High	Completed Doser Line	Repair Needed	None	None	96
1439	High	Completed Doser Line	Repair Needed	None	None	367
1440	High	Completed Doser Line	Repair Needed	None	None	1014
1441	High	Completed Doser Line	Repair Needed	None	None	240
1442	High	Completed Doser Line	Repair Needed	None	None	330
1443	High	Completed Doser Line	Repair Needed	None	None	185
1444	High	Completed Doser Line	Repair Needed	None	None	750
1445	High	Completed Doser Line	Repair Needed	None	None	455
1446	High	Completed Doser Line	Repair Needed	None	None	96
1447	High	Completed Doser Line	Repair Needed	None	None	367
1448	High	Completed Doser Line	Repair Needed	None	None	1014
1449	High	Completed Doser Line	Repair Needed	None	None	240
1450	High	Completed Doser Line	Repair Needed	None	None	330
1451	High	Completed Doser Line	Repair Needed	None	None	185
1452	High	Completed Doser Line	Repair Needed	None	None	750
1453	High	Completed Doser Line	Repair Needed	None	None	455
1454	High	Completed Doser Line	Repair Needed	None	None	96
1455	High	Completed Doser Line	Repair Needed	None	None	367
1456	High	Completed Doser Line	Repair Needed	None	None	1014
1457	High	Completed Doser Line	Repair Needed	None	None	240
1458	High	Completed Doser Line	Repair Needed	None	None	330
1459	High	Completed Doser Line	Repair Needed	None	None	185