

Suppression Repair Tiles

Cedar Creek
OR-WF-220180
10/21/2022 24 Hour
126,890 acres at 10/19/2022 @ 1948
1:1,100,000

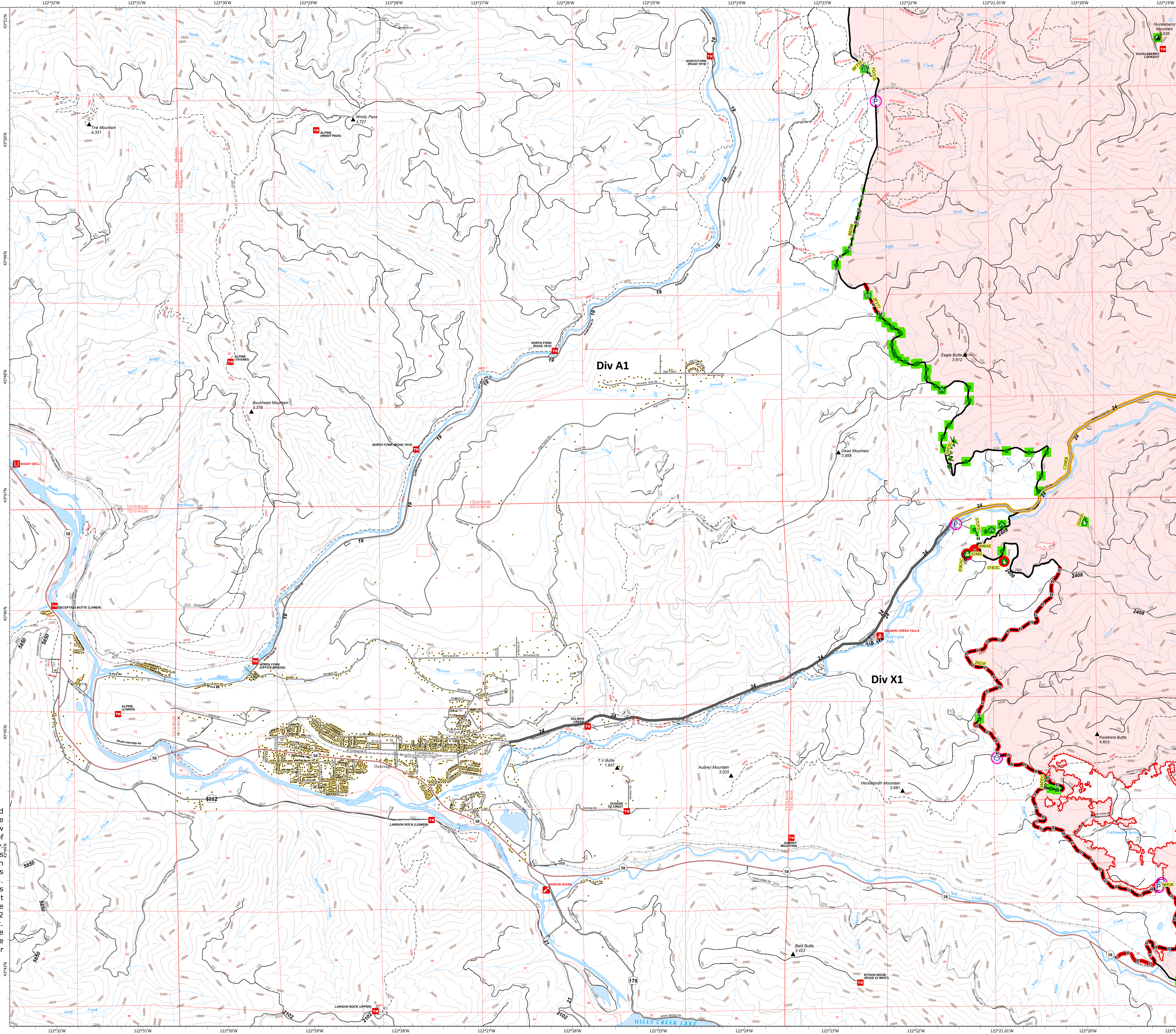
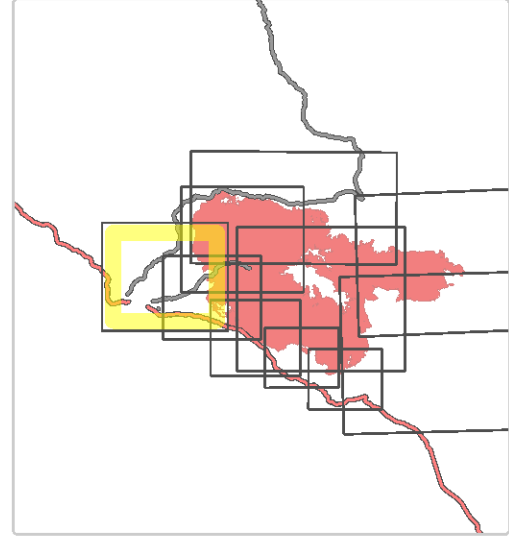
Oakridge

- Accountable Property - Repair Status
- In Use - Fire Management (4)
- Accountable Property
- Pump (3)
 - Water Tank (1)
 - In Use - Fire Management (3)
 - Repair Needed (4)
 - Completed - Inspected (46)
 - No Repair Needed (1)
- Other (1)
- Water Development or Draft Site (1)
 - Structure Wrap (1)
 - Stream Crossing (2)
 - Road Repair (1)
 - Repair Point (39)
 - Landing or Log Deck (1)
 - Dozer Push (2)
 - Culvert (5)
 - Water Source (1)
- Completed Doser Line (4)
- Completed Fuel Blank (2)
 - Completed Hand Line (6)
 - Completed Mixed Construction Line (1)
 - Completed Road as Line (2)
 - Access or Improved Road (1)
- Repair Needed (2)
- In Progress (1)
 - Completed - Inspected (12)
- Contained
- Uncontained
- Wildfire Daily Fire Perimeter
- Interior Roads
- Secondary Highway
 - Paved Roads
 - Dirt (Not Paved)
 - Paved Road
 - Gravel Road
 - Unimproved Roads
 - Closed Roads
 - Roads

Note: This map and associated tables have been filtered to only show Repair Points / Lines of Medium or High priority. There exists numerous other features of unknown or low priority repair needs throughout the fire area. The intended use of this map is to define/represent the repair work to be completed during IMT12 oversight of this incident. This map should **NOT** be considered a complete source for repair information.



Oakridge



Repair ID	Priority	Point Type	Status	Repairs Needed	Repair Comments	Latitude	Longitude
1268	High	Landing or Log Deck	Repair Needed	Fill with wood and other debris to create a safe landing area for heavy machinery. Use 100% wood chips or straw. Do not use rocks or other debris. Use 100% wood chips or straw. Do not use rocks or other debris.		43° 46.452' N	122° 21.360' W
1269	High	Other	Repair Needed	Reinforce clearing		43° 46.467' N	122° 21.077' W
1270	Medium	Dozer Push	Repair Needed	Push in berm, cover in slash, with water bar at entrance		43° 46.389' N	122° 20.014' W
1271	Medium	Repair Point	Repair Needed	Push back berm on edge of slash and back up berm of material from slash. Push back berm on edge of slash and back up berm of material from slash. Push back berm on edge of slash and back up berm of material from slash.		43° 46.468' N	122° 21.918' W

Divide ID	Priority	Line Type	Status	Repairs Needed	Repair Comments	Len (ft)
1268	High	Access or Improved Road	In Progress	Cut Gravel Truss, Clear Obvious	Needed to access other repair work on 2452, 2453, 2454, 2455. Inspects TIS High Road and Priority for Diesel/Tractor access.	2055
1269	High	Completed Hand Line	Completed - Inspected	Full back berm line, water bar and full back berm, spread slash, digger and tractor entrance, clear and install 100% DCP Cover 100%	Clear full back berm 2012, 2452, 2453, 2454, 2455. Clear full back berm 2012, 2452, 2453, 2454, 2455. Clear full back berm 2012, 2452, 2453, 2454, 2455.	1247
1270	High	Completed Hand Line	Completed - Inspected	Full back any berms and/or installed, water bar using hand tools every 50 feet to vehicle line. Cover with what slash can be found, weed and slash bottom 100% tractor and clear ditch line at end, pull back material and back entrance	100% slash, water bar, full back berm, weed and slash, 100% cover, full back berm, weed and slash, 100% cover, full back berm, weed and slash.	736
1271	High	Completed Hand Line	Completed - Inspected	berm, pullback, digger entrance to 8 down berm to line 100% (100% berm)		14
1272	High	Completed Hand Line	Completed - Inspected	Full back	Full back berm, cover with slash, water bar, 100% cover, full back berm, weed and slash.	31
1273	High	Completed Hand Line	Completed - Inspected	berm, pullback	berm, pullback	31
1274	High	Completed Hand Line	Completed - Inspected	Full back berm, cover in slash, digger entrance (2454 - 2455)	Full back berm, cover in slash, digger entrance to prevent rain DCP fuel collector (2454 - 2455)	81
1275	High	Completed Hand Line	Completed - Inspected	Full back berm, digger entrance	Full back berm, digger entrance	36
1276	High	Completed Hand Construction Line	Repair Needed	Light repair line is meant to be left for future use.	Light repair line is meant to be left for future use.	1075
1277	High	Completed Road as Line	Repair Needed	Clear 100% and collect debris/brush, 100% DCP	Clear 100% and collect debris/brush, 100% DCP	1075
1278	Medium	Completed Hand Line	Completed - Inspected	Full back berm and material removal, digger and tractor entrance from public access (2454 - 2455)	Full back berm and material removal, digger and tractor entrance from public access (2454 - 2455)	107
1279	Medium	Completed Hand Line	Completed - Inspected	Full back berm, water bar to open, spread slash and back entrance (2454 - 2455)	Full back berm, water bar to open, spread slash and back entrance (2454 - 2455)	107
1280	Medium	Completed Hand Line	Completed - Inspected	Full back berm, cover in slash, digger entrance (2454 - 2455)	Full back berm, cover in slash, digger entrance (2454 - 2455)	107
1281	Medium	Completed Hand Line	Completed - Inspected	Full back berm, cover in slash, digger entrance (2454 - 2455)	Full back berm, cover in slash, digger entrance (2454 - 2455)	107
1282	Medium	Completed Hand Line	Completed - Inspected	Full back berm, cover in slash, digger entrance (2454 - 2455)	Full back berm, cover in slash, digger entrance (2454 - 2455)	107
1283	Medium	Completed Hand Line	Completed - Inspected	Full back berm, cover in slash, digger entrance (2454 - 2455)	Full back berm, cover in slash, digger entrance (2454 - 2455)	107
1284	Medium	Completed Hand Line	Completed - Inspected	Full back berm, cover in slash, digger entrance (2454 - 2455)	Full back berm, cover in slash, digger entrance (2454 - 2455)	107
1285	Medium	Completed Hand Line	Completed - Inspected	Full back berm, cover in slash, digger entrance (2454 - 2455)	Full back berm, cover in slash, digger entrance (2454 - 2455)	107
1286	Medium	Completed Hand Line	Completed - Inspected	Full back berm, cover in slash, digger entrance (2454 - 2455)	Full back berm, cover in slash, digger entrance (2454 - 2455)	107
1287	Medium	Completed Hand Line	Completed - Inspected	Full back berm, cover in slash, digger entrance (2454 - 2455)	Full back berm, cover in slash, digger entrance (2454 - 2455)	107
1288	Medium	Completed Hand Line	Completed - Inspected	Full back berm, cover in slash, digger entrance (2454 - 2455)	Full back berm, cover in slash, digger entrance (2454 - 2455)	107
1289	Medium	Completed Hand Line	Completed - Inspected	Full back berm, cover in slash, digger entrance (2454 - 2455)	Full back berm, cover in slash, digger entrance (2454 - 2455)	107
1290	Medium	Completed Hand Line	Completed - Inspected	Full back berm, cover in slash, digger entrance (2454 - 2455)	Full back berm, cover in slash, digger entrance (2454 - 2455)	107