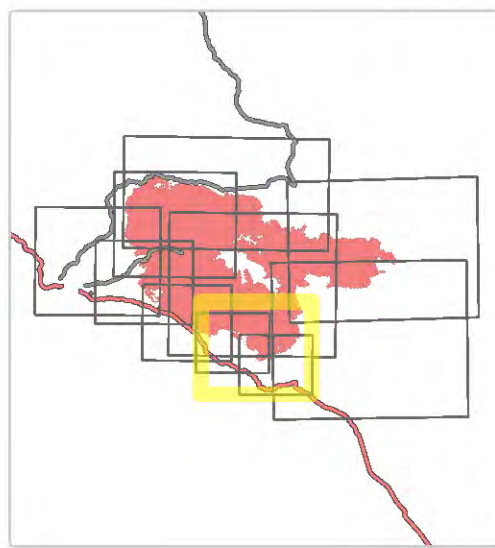


# Div S

Cedar Creek  
OR-WIF-220180  
10/23/2022 24 Hour

127.283 acres at 10/20/2022 @ 2027

- Dip Site
- Helispot
- Sling Site
- Division Break
- Drop Point
- Closure
- Staging Area
- Lookout
- Hot Spot - Spot Fire
- Fire Origin
- Value at Risk
- Other
- Mobile Weather Unit
- Internet Access
- Repeater
- Hazard
- Water Source
- Restricted Water Source
- Completed Dozer Line
- Completed Hand Line
- Completed Mixed Construction Line
- Completed Road as Line
- Access or Improved Road
- Other
- Escape Route
- Paved Road
- Gravel Road
- Unimproved Roads
- Closed Roads
- Interior Roads
- Contained
- Uncontained
- Wildfire Daily Fire Perimeter
- Forest Service Land
- Wilderness
- Roadless Area



0 1:37,000 1  
Miles

map exported at 10/22/2022 1935 hrs

