

# Suppression Repair Tiles

Cedar Creek  
OR-WF-220180  
10/23/2022 24 Hour  
127,283 acres at 10/20/2022 @ 2027  
1:1,100,000

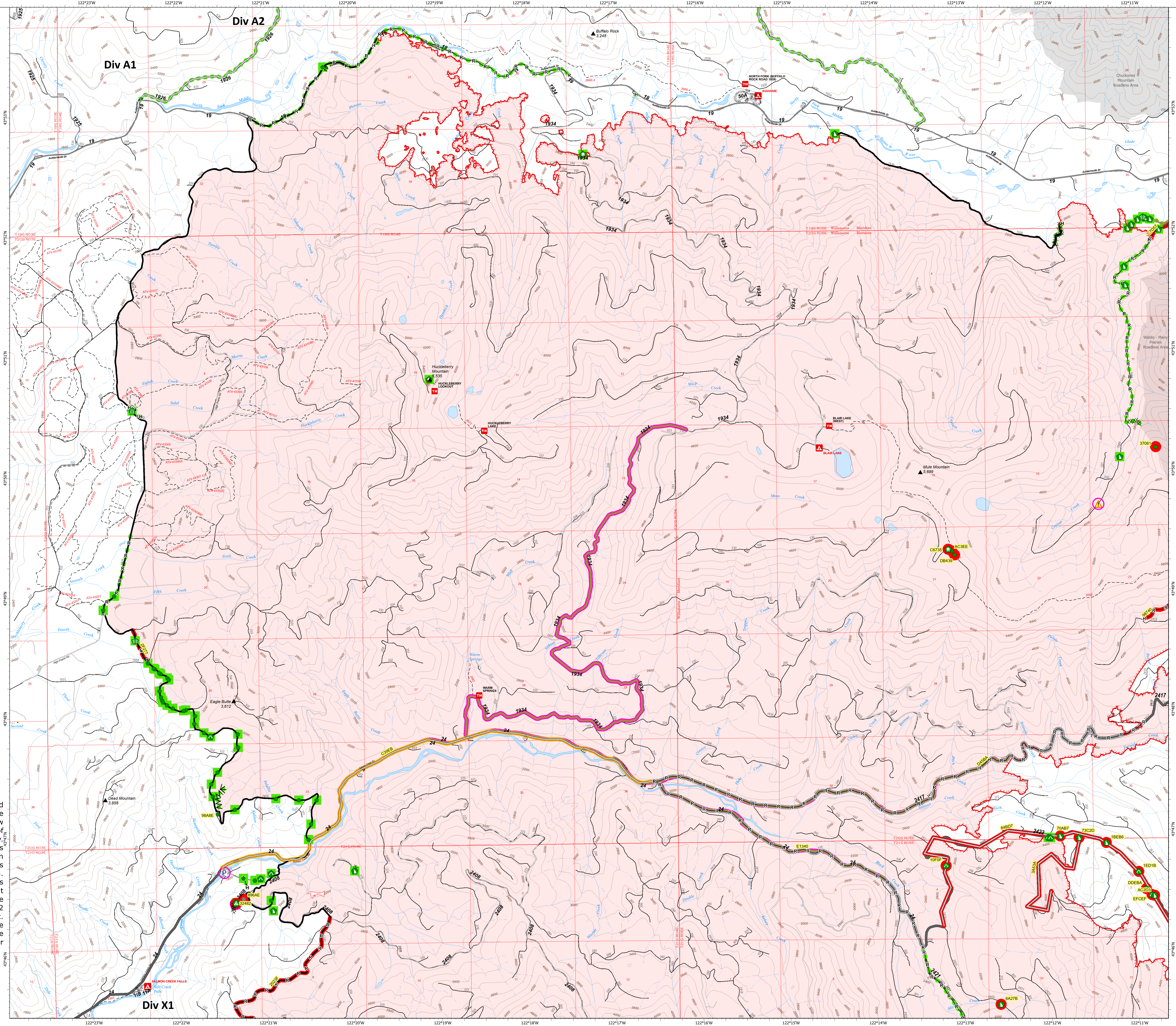
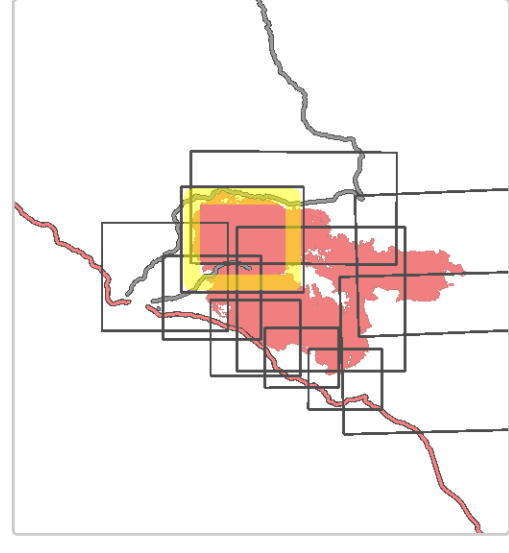
## DIV A1

- Accountable Property - Repair Status
- In Use - Fire Management (1)
- Accountable Property
- Pump (1)
  - In Use - Fire Management (2)
  - Repair Needed (15)
  - Completed - Inspected (56)
  - No Repair Needed (1)
  - Other (1)
  - Structure Wrap (3)
  - Stream Crossing (2)
  - Road Repair (1)
  - Repair Point (39)
  - Landing or Log Deck (1)
  - Dozer Push (19)
  - Culvert (10)
  - Hazard (1)
- Completed Dozer Line (5)
- Completed Fuel Break (1)
- Completed Hand Line (9)
- Completed Mixed Construction Line (1)
- Completed Road as Line (9)
- Access or Improved Road (4)
- Repair Line (3)
- Road Repair (1)
- In Use - Fire Management (3)
- Repair Needed (6)
- In Progress (1)
- Completed - Inspected (21)
- Other - See Comments (2)
- Contained
- Uncountained
- Wildfire Daily Fire Perimeter
- Interior Roads
- Paved Roads
- Dirt (Not Paved)
- Paved Road
- Gravel Road
- Unimproved Roads
- Closed Roads
- Roads
- Roadless Area

**Note:** This map and associated tables have been filtered to only show Repair Points / Lines of Medium or High priority. There exists numerous other features of unknown or low priority repair needs throughout the fire area. The intended use of this map is to define/represent the repair work to be completed during IMT12 oversight of this incident. This map should **NOT** be considered a complete source for repair information.



## DIV A1



Repair ID	Priority	Point Type	Status	Repairs Needed	Repair Comments	Latitude	Longitude
2828P	High	Culvert	Repair Needed	Clear catch basin		47° 46.459' N	122° 13.844' W
2828R	High	Culvert	Repair Needed	Clear catch basin		47° 46.722' N	122° 13.862' W
2828S	High	Other	Repair Needed	Remove debris from fire fighting equipment area	Remove debris from fire fighting equipment area	47° 46.467' N	122° 13.272' W
2828T	High	Repair Point	Repair Needed	Remove debris from fire fighting equipment area	Remove debris from fire fighting equipment area	47° 46.301' N	122° 13.074' W
2828U	High	Repair Point	Repair Needed	Remove debris from fire fighting equipment area	Remove debris from fire fighting equipment area	47° 46.248' N	122° 13.077' W
2828V	High	Structure Wrap	Repair Needed	Remove debris from fire fighting equipment area	Remove debris from fire fighting equipment area	47° 46.348' N	122° 13.146' W
2828W	Medium	Culvert	Repair Needed	Clear catch basin		47° 46.637' N	122° 13.068' W
2828X	High	Dozer Push	Repair Needed	Remove debris from fire fighting equipment area	Remove debris from fire fighting equipment area	47° 46.637' N	122° 13.068' W
2828Y	Medium	Dozer Push	Repair Needed	Remove debris from fire fighting equipment area	Remove debris from fire fighting equipment area	47° 46.637' N	122° 13.068' W
2828Z	Medium	Dozer Push	Repair Needed	Remove debris from fire fighting equipment area	Remove debris from fire fighting equipment area	47° 46.637' N	122° 13.068' W
2829A	Medium	Dozer Push	Repair Needed	Remove debris from fire fighting equipment area	Remove debris from fire fighting equipment area	47° 46.637' N	122° 13.068' W
2829B	Medium	Dozer Push	Repair Needed	Remove debris from fire fighting equipment area	Remove debris from fire fighting equipment area	47° 46.637' N	122° 13.068' W
2829C	Medium	Dozer Push	Repair Needed	Remove debris from fire fighting equipment area	Remove debris from fire fighting equipment area	47° 46.637' N	122° 13.068' W
2829D	Medium	Dozer Push	Repair Needed	Remove debris from fire fighting equipment area	Remove debris from fire fighting equipment area	47° 46.637' N	122° 13.068' W
2829E	Medium	Dozer Push	Repair Needed	Remove debris from fire fighting equipment area	Remove debris from fire fighting equipment area	47° 46.637' N	122° 13.068' W
2829F	Medium	Dozer Push	Repair Needed	Remove debris from fire fighting equipment area	Remove debris from fire fighting equipment area	47° 46.637' N	122° 13.068' W
2829G	Medium	Dozer Push	Repair Needed	Remove debris from fire fighting equipment area	Remove debris from fire fighting equipment area	47° 46.637' N	122° 13.068' W
2829H	Medium	Dozer Push	Repair Needed	Remove debris from fire fighting equipment area	Remove debris from fire fighting equipment area	47° 46.637' N	122° 13.068' W
2829I	Medium	Dozer Push	Repair Needed	Remove debris from fire fighting equipment area	Remove debris from fire fighting equipment area	47° 46.637' N	122° 13.068' W
2829J	Medium	Dozer Push	Repair Needed	Remove debris from fire fighting equipment area	Remove debris from fire fighting equipment area	47° 46.637' N	122° 13.068' W
2829K	Medium	Dozer Push	Repair Needed	Remove debris from fire fighting equipment area	Remove debris from fire fighting equipment area	47° 46.637' N	122° 13.068' W
2829L	Medium	Dozer Push	Repair Needed	Remove debris from fire fighting equipment area	Remove debris from fire fighting equipment area	47° 46.637' N	122° 13.068' W
2829M	Medium	Dozer Push	Repair Needed	Remove debris from fire fighting equipment area	Remove debris from fire fighting equipment area	47° 46.637' N	122° 13.068' W
2829N	Medium	Dozer Push	Repair Needed	Remove debris from fire fighting equipment area	Remove debris from fire fighting equipment area	47° 46.637' N	122° 13.068' W
2829O	Medium	Dozer Push	Repair Needed	Remove debris from fire fighting equipment area	Remove debris from fire fighting equipment area	47° 46.637' N	122° 13.068' W
2829P	Medium	Dozer Push	Repair Needed	Remove debris from fire fighting equipment area	Remove debris from fire fighting equipment area	47° 46.637' N	122° 13.068' W
2829Q	Medium	Dozer Push	Repair Needed	Remove debris from fire fighting equipment area	Remove debris from fire fighting equipment area	47° 46.637' N	122° 13.068' W
2829R	Medium	Dozer Push	Repair Needed	Remove debris from fire fighting equipment area	Remove debris from fire fighting equipment area	47° 46.637' N	122° 13.068' W
2829S	Medium	Dozer Push	Repair Needed	Remove debris from fire fighting equipment area	Remove debris from fire fighting equipment area	47° 46.637' N	122° 13.068' W
2829T	Medium	Dozer Push	Repair Needed	Remove debris from fire fighting equipment area	Remove debris from fire fighting equipment area	47° 46.637' N	122° 13.068' W
2829U	Medium	Dozer Push	Repair Needed	Remove debris from fire fighting equipment area	Remove debris from fire fighting equipment area	47° 46.637' N	122° 13.068' W
2829V	Medium	Dozer Push	Repair Needed	Remove debris from fire fighting equipment area	Remove debris from fire fighting equipment area	47° 46.637' N	122° 13.068' W
2829W	Medium	Dozer Push	Repair Needed	Remove debris from fire fighting equipment area	Remove debris from fire fighting equipment area	47° 46.637' N	122° 13.068' W
2829X	Medium	Dozer Push	Repair Needed	Remove debris from fire fighting equipment area	Remove debris from fire fighting equipment area	47° 46.637' N	122° 13.068' W
2829Y	Medium	Dozer Push	Repair Needed	Remove debris from fire fighting equipment area	Remove debris from fire fighting equipment area	47° 46.637' N	122° 13.068' W
2829Z	Medium	Dozer Push	Repair Needed	Remove debris from fire fighting equipment area	Remove debris from fire fighting equipment area	47° 46.637' N	122° 13.068' W

Divide ID	Priority	Line Type	Status	Repairs Needed	Repair Comments	Len (ft)
2828	High	Access or Improved Road	In Progress	Clear Debris Trees, Clear Obstacles	Needed to access all other repair work on 2815, 2816, 2817, 2822. Inspects 2815 fuel material and Ready for District Public access.	26751
2829	High	Access or Improved Road	Repair Needed	Clear Obstacles	Full debris and slash cleanup. Reduce approach that hasn't been completed back into road grade.	9623
2830	High	Access or Improved Road	Repair Needed	Clear Obstacles	High potential for debris during winter 22. Water will not be able to reach in distribution. Clean out debris and culvert.	20293
2831	High	Completed Road Construction Line	Repair Needed	Light issue. Use is meant to be left for future fire use.	ROAD COMMENTS: 282222: Full in clear berms, weed and slash. Spread slash on sides of the road. Do not put into line. No vegetation needed. Consider utilizing larger down trees to block entrance at the 2840 and 1810 road junctions.	1871
2832	High	Completed Road as Line	Repair Needed	Clear Obstacles and culverts of slash and debris.		9761
2833	High	Completed Road as Line	Repair Needed	Clear Obstacles and culverts of slash and debris.		8779
2834	High	Completed Road as Line	Repair Needed	Clear Obstacles and culverts of slash and debris.		1244
2835	High	Completed Road as Line	Repair Needed	Clear Obstacles and culverts of slash and debris.		3080
2836	High	Completed Road as Line	Repair Needed	Clear Obstacles and culverts of slash and debris.		1759