

Suppression Repair Tiles

Cedar Creek  
OR-WF-220180  
10/23/2022 24 Hour  
1:1,100,000  
DIV A2

- Accountable Property - Repair Status
In Use - Fire Management (1)
Accountable Property
Pump (1)
In Use - Fire Management (9)
Repair Needed (41)
Completed - Ready for Inspection (1)
Completed - Inspected (88)
No Repair Needed (2)
Hotspot (1)
Value at Risk (1)
Other (1)
Structure Wrap (19)
Stream Crossing (3)
Road Repair (3)
Repair Point (48)
Landing or Log Deck (2)
Dozer Push (52)
Culvert (23)
Hazard (1)
Completed Dozer Line (9)
Completed Fuel Break (2)
Completed Hand Line (15)
Completed Mixed Construction Line (1)
Completed Road as Line (9)
Access or Improved Road (5)
Repair Line (4)
Road Repair (5)
In Use - Fire Management (3)
Repair Needed (17)
In Progress (1)
Completed - Inspected (26)
Other - See Comments (2)
Contained
Uncontained
Wildfire Daily Fire Perimeter
Interior Roads
Paved Roads
Dirt (Not Paved)
Paved Road
Gravel Road
Unimproved Roads
Closed Roads
Roads
Wilderness
Roadless Area

Note: This map and associated tables have been filtered to only show Repair Points / Lines of Medium or High priority. There exists numerous other features of unknown or low priority repair needs throughout the fire area. The intended use of this map is to define/represent the repair work to be completed during IMT12 oversight of this incident. This map should NOT be considered a complete source for repair information.

Div A2

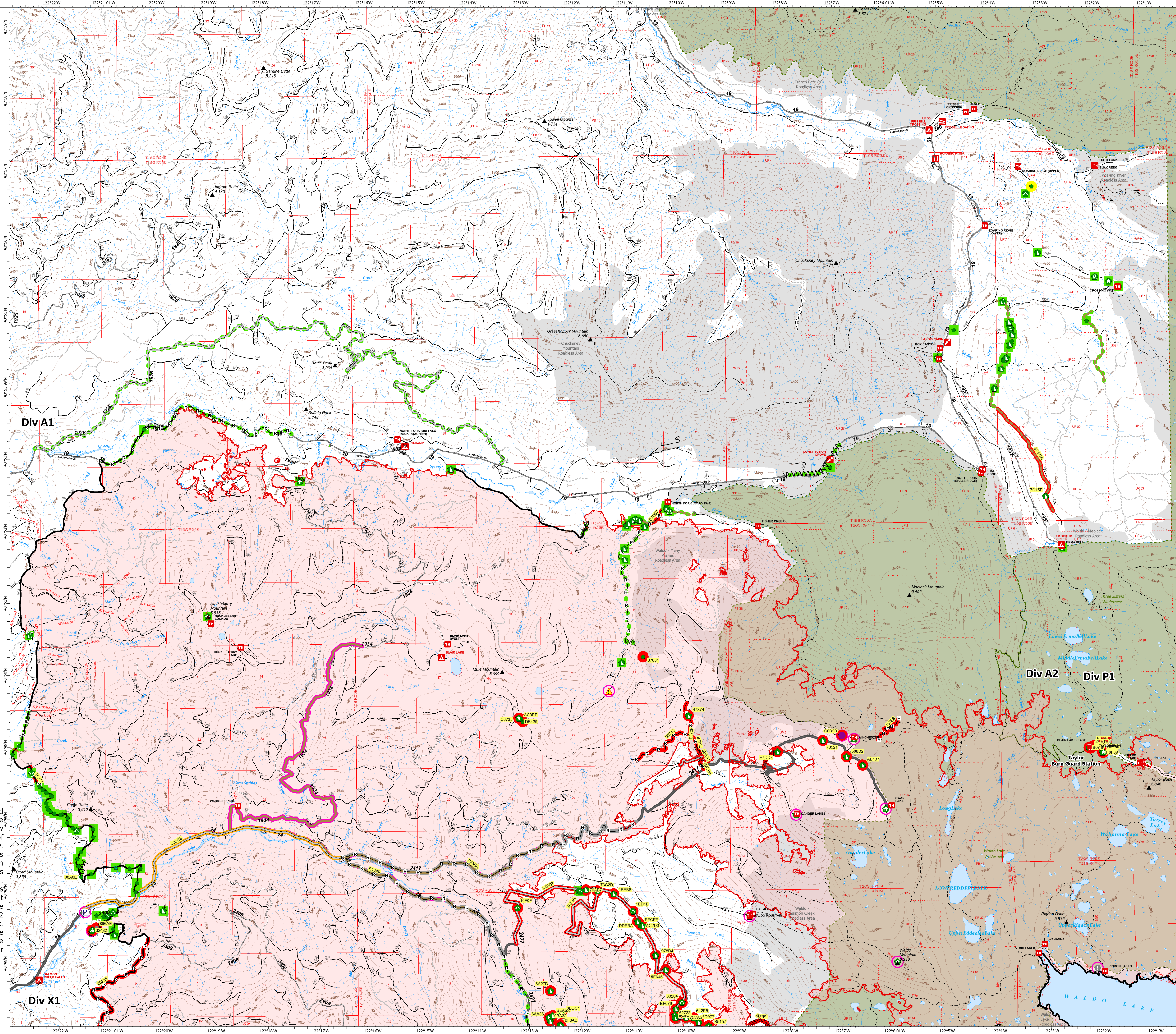
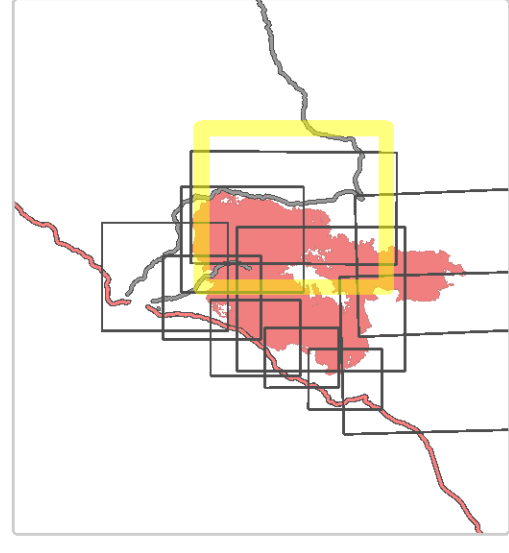


Table with columns: Repair ID, Priority, Point Type, Status, Repair Needed, Repair Comments, Latitude, Longitude. Contains detailed data for specific repair points.

Table with columns: Division ID, Priority, Line Type, Status, Repair Needed, Repair Comments, Len (ft). Contains detailed data for various repair lines.

