

Suppression Repair Tiles

Cedar Creek
OR-WF-220180
10/23/2022 24 Hour
127,283 acres as of 10/20/2022 © 2022
1:1,100,000

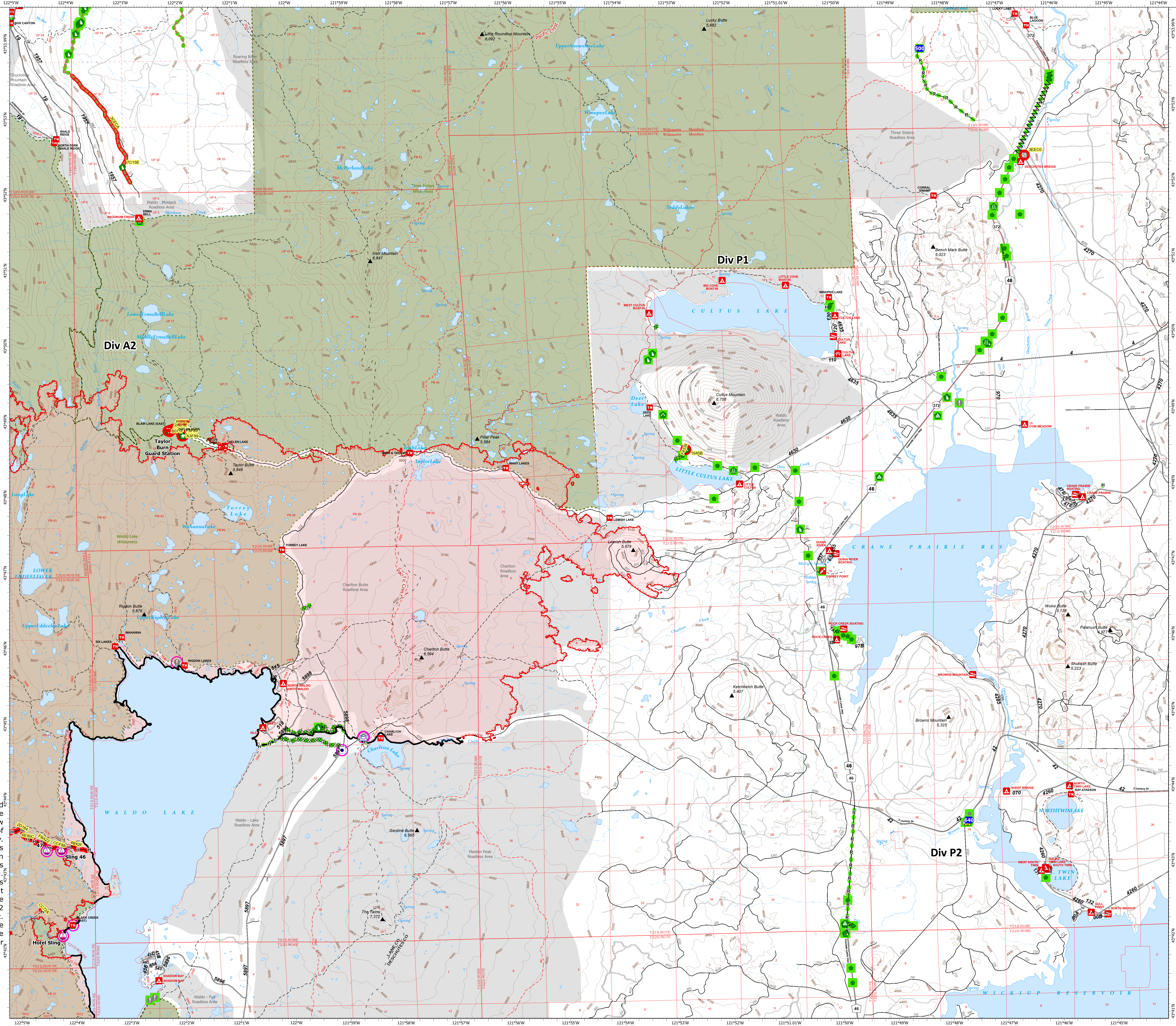
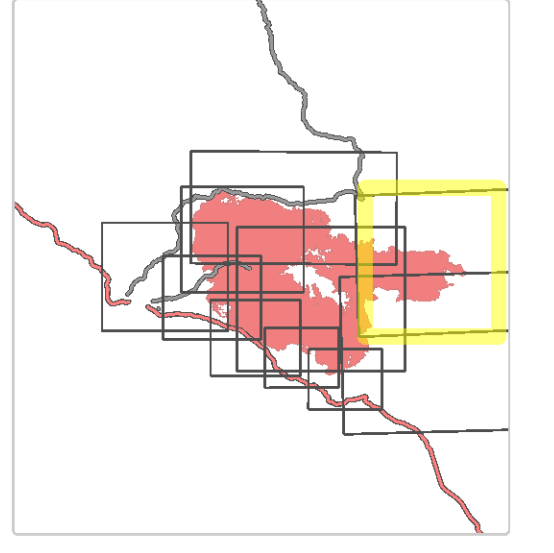
Div P1

- Accountable Property - Repair Status
- In Use - Fire Management (5)
- Accountable Property
- Other Property (2)
 - Pump (1)
 - Water Tank (2)
- In Use - Fire Management (5)
- Repair Needed (9)
 - Completed - Inspected (74)
 - No Repair Needed (1)
- Sling Site (3)
- Drop Point (2)
 - Value at Risk (4)
 - Other (1)
 - Gate (2)
- Structure Wrap (11)
- Road Repair (3)
 - Repair Point (42)
 - Landing or Log Deck (6)
 - Dozer Push (14)
 - Culvert (2)
 - Safety Zone (1)
- Completed Dozer Line (6)
- Completed Fuel Break (1)
 - Completed Hand Line (14)
 - Completed Road as Line (2)
 - Road Repair (4)
 - Repair Needed (11)
 - Completed - Inspected (16)
- Contained
- Uncontained
 - Wildfire Daily Fire Perimeter
 - Secondary Highway
 - Paved Roads
 - Dirt (Not Paved)
 - Paved Road
 - Gravel Road
 - Dirt Roads
 - Unimproved Roads
 - Closed Roads
 - Roads
 - Wilderness
 - Roadless Area

Note: This map and associated tables have been filtered to only show Repair Points / Lines of Medium or High priority. There exists numerous other features of unknown or low priority repair needs throughout the fire area. The intended use of this map is to define/represent the repair work to be completed during IMT12 oversight of this incident. This map should **NOT** be considered a complete source for repair information.



Div P1



Repair ID	Priority	Point Type	Status	Repairs Needed	Repair Comments	Latitude	Longitude
3803	High	Gate	Repair Needed	Gate lock to be fixed. Gate requires attention. When all done gate lock and lock on one or repair point. High priority repair on the gate. High priority for repair to prevent with chain. ROP: Admin 10/20/2022	47° 52.258' N	121° 48.492' W	
0401	High	Structure Wrap	Repair Needed	Remove shelter wrap. Using staple puller to remove staples. 1/2" of staple wire exposed. 20' to 40'. 1/2" staple for glass fibers. 2' jansen cover 2 hours to finish.	47° 48.867' N	121° 51.967' W	
1909	High	Structure Wrap	Repair Needed	Remove shelter wrap. Using staple puller to remove staples. 1/2" of staple wire exposed. 20' to 40'. 1/2" staple for glass fibers. 2' jansen cover 2 hours to finish.	47° 48.799' N	121° 51.942' W	
4299	High	Structure Wrap	Repair Needed	Remove shelter wrap. Using staple puller to remove staples. 1/2" of staple wire exposed. 20' to 40'. 1/2" staple for glass fibers. 2' jansen cover 2 hours to finish.	47° 48.799' N	121° 51.940' W	
6048	High	Structure Wrap	Repair Needed	Remove shelter wrap. Using staple puller to remove staples. 1/2" of staple wire exposed. 20' to 40'. 1/2" staple for glass fibers. 2' jansen cover 2 hours to finish.	47° 48.867' N	121° 51.115' W	
1017	High	Structure Wrap	Repair Needed	Remove shelter wrap. Using staple puller to remove staples. 1/2" of staple wire exposed. 20' to 40'. 1/2" staple for glass fibers. 2' jansen cover 2 hours to finish.	47° 48.867' N	121° 52.218' W	
4800	High	Structure Wrap	Repair Needed	Remove shelter wrap. Using staple puller to remove staples. 1/2" of staple wire exposed. 20' to 40'. 1/2" staple for glass fibers. 2' jansen cover 2 hours to finish.	47° 48.867' N	121° 52.189' W	
1042	High	Structure Wrap	Repair Needed	Remove shelter wrap. Using staple puller to remove staples. 1/2" of staple wire exposed. 20' to 40'. 1/2" staple for glass fibers. 2' jansen cover 2 hours to finish.	47° 48.866' N	121° 52.172' W	
1908	Medium	Culvert	Repair Needed	Replacement. Check complete. Checkpoint	47° 48.208' N	121° 52.706' W	
7432	Medium	Door Push	No Repair Needed	Light Issue	ROAD SIGN 01032 ROAD SIGN 01032 Replacement and another shield. Sand and brush.	47° 52.200' N	121° 52.996' W

Repair ID	Priority	Line Type	Status	Repairs Needed	Repair Comments	Len (ft)
804P	High	Completed Road Line	Repair Needed	Full flagging and hose lay. (shower large pile of staples low standing, pull back berries and oak, (shower) green marked across scrub)		2807
1279	High	Completed Road Line	Repair Needed	Full flagging and hose lay. (shower large pile of staples low standing, pull back berries and oak, (shower) green marked across scrub)		2807
1942	High	Completed Road Line	Repair Needed	Full flagging and hose lay. (shower large pile of staples low standing, pull back berries and oak, (shower) green marked across scrub)		2023
1287	High	Completed Road Line	Repair Needed	Full flagging and hose lay. (shower large pile of staples low standing, pull back berries and oak, (shower) green marked across scrub)		176
1285	High	Road Repair	Repair Needed	Area with other clips? (shower) to get rubber clips in due to lack of burnstand		1558
1275	Medium	Completed Road Line	Repair Needed	Full flagging and hose lay. (shower large pile of staples low standing, pull back berries and oak, (shower) green marked across scrub)		204
1286	Medium	Completed Road Line	Repair Needed	Full flagging and hose lay. (shower large pile of staples low standing, pull back berries and oak, (shower) green marked across scrub)		174
1909	Medium	Road Repair	Repair Needed	Reinforce bridge to road by knocking back berries and cutting large woody debris		7