

Suppression Repair Tiles

Cedar Creek
OR-WF-220180
10/23/2022 24 Hour
127,283 acres as of 10/20/2022 @ 2027
1:1,100,000
Div P1

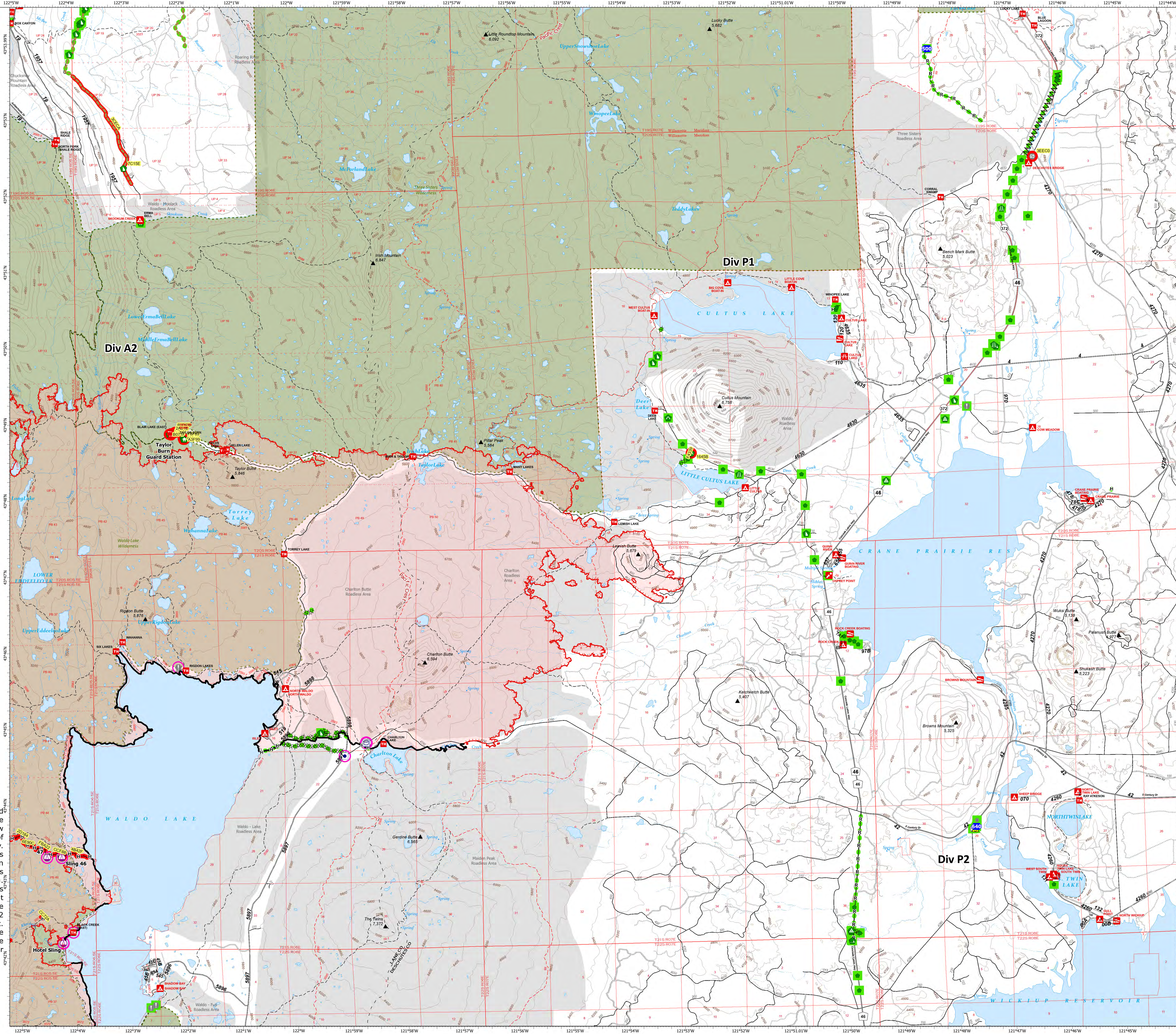
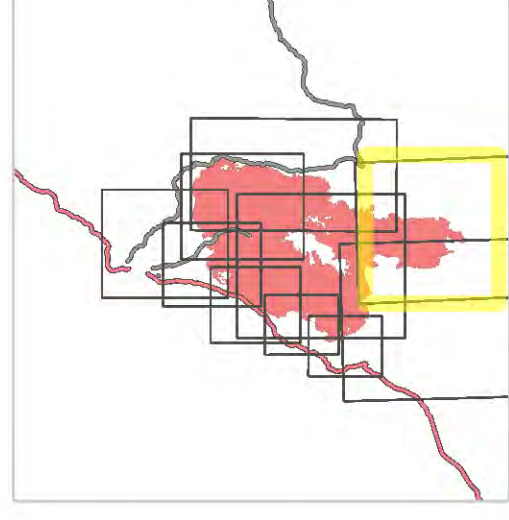
- Accountable Property - Repair Status
- In Use - Fire Management (5)
- Accountable Property
- Other Property (2)
 - Pump (1)
 - Water Tank (2)
 - In Use - Fire Management (5)
 - Repair Needed (9)
 - Completed - Inspected (74)
 - No Repair Needed (1)
- Other
- Sling Site (3)
 - Drop Point (2)
 - Value at Risk (4)
 - Other (1)
 - Gate (2)
 - Structure Wrap (11)
 - Road Repair (3)
 - Repair Point (42)
 - Landing or Log Deck (6)
 - Dozer Push (14)
 - Culvert (2)
 - Safety Zone (1)
- Completed
- Completed Dozer Line (6)
 - Completed Fuel Break (1)
 - Completed Hand Line (14)
 - Completed Road as Line (2)
 - Road Repair (4)
 - Repair Needed (11)
 - Completed - Inspected (16)

- Contained
- Uncontained
- Wildfire Daily Fire Perimeter
- Secondary Highway
- Paved Roads
- Dirt (Not Paved)
- Paved Road
- Gravel Road
- Dirt Roads
- Unimproved Roads
- Closed Roads
- Roads
- Wilderness
- Roadless Area

Note: This map and associated tables have been filtered to only show Repair Points / Lines of Medium or High priority. There exists numerous other features of unknown or low priority repair needs throughout the fire area. The intended use of this map is to define/represent the repair work to be completed during IMT12 oversight of this incident. This map should **NOT** be considered a complete source for repair information.



Div P1



Repair ID	Priority	Point Type	Status	Repairs Needed	Repair Comments	Latitude	Longitude
3800	High	Gate	Repair Needed	Gate lock to be fixed during suppression activities. After all heavy equipment and staff are out on site, gate will be closed and locked. High priority repair on the gate. High priority repair on the gate. High priority repair on the gate.	47° 52.258' N	121° 48.492' W	
4001	High	Structure Wrap	Repair Needed	Remove debris wrap, bring debris piles to remove debris, bring of fuel one wrapable bundle 20' to 40', slash bags for glass fibers, 2 person crew 2 hours to slash.	47° 48.867' N	121° 51.967' W	
4100	High	Structure Wrap	Repair Needed	Remove debris wrap, bring debris piles to remove debris, bring of fuel one wrapable bundle 20' to 40', slash bags for glass fibers, 2 person crew 2 hours to slash.	47° 48.799' N	121° 51.942' W	
4200	High	Structure Wrap	Repair Needed	Remove debris wrap, bring debris piles to remove debris, bring of fuel one wrapable bundle 20' to 40', slash bags for glass fibers, 2 person crew 2 hours to slash.	47° 48.799' N	121° 51.942' W	
4300	High	Structure Wrap	Repair Needed	Remove debris wrap, bring debris piles to remove debris, bring of fuel one wrapable bundle 20' to 40', slash bags for glass fibers, 2 person crew 2 hours to slash.	47° 48.867' N	121° 51.917' W	
4400	High	Structure Wrap	Repair Needed	Remove debris wrap, bring debris piles to remove debris, bring of fuel one wrapable bundle 20' to 40', slash bags for glass fibers, 2 person crew 2 hours to slash.	47° 48.867' N	121° 51.917' W	
4500	High	Structure Wrap	Repair Needed	Remove debris wrap, bring debris piles to remove debris, bring of fuel one wrapable bundle 20' to 40', slash bags for glass fibers, 2 person crew 2 hours to slash.	47° 48.867' N	121° 51.917' W	
4600	High	Structure Wrap	Repair Needed	Remove debris wrap, bring debris piles to remove debris, bring of fuel one wrapable bundle 20' to 40', slash bags for glass fibers, 2 person crew 2 hours to slash.	47° 48.867' N	121° 51.917' W	
4700	High	Structure Wrap	Repair Needed	Remove debris wrap, bring debris piles to remove debris, bring of fuel one wrapable bundle 20' to 40', slash bags for glass fibers, 2 person crew 2 hours to slash.	47° 48.867' N	121° 51.917' W	
4800	High	Structure Wrap	Repair Needed	Remove debris wrap, bring debris piles to remove debris, bring of fuel one wrapable bundle 20' to 40', slash bags for glass fibers, 2 person crew 2 hours to slash.	47° 48.867' N	121° 51.917' W	
4900	Medium	Culvert	Repair Needed	Replacement: Check complete inspection	47° 48.208' N	121° 52.796' W	
5000	Medium	Door Push	No Repair Needed	Light House	47° 52.258' N	121° 48.492' W	

Repair ID	Priority	Line Type	Status	Repairs Needed	Repair Comments	Len (ft)
184P	High	Completed Road Line	Repair Needed	Full flagging and base for - improve large pile of debris low standing, full back berm and cap, debris - green material across swath		2807
127W	High	Completed Road Line	Repair Needed	Full flagging and base for - improve large pile of debris low standing, full back berm and cap, debris - green material across swath		2807
1942	High	Completed Road Line	Repair Needed	Full flagging and base for - improve large pile of debris low standing, full back berm and cap, debris - green material across swath		2023
128T	High	Completed Road Line	Repair Needed	Full flagging and base for - improve large pile of debris low standing, full back berm and cap, debris - green material across swath		176
128S	High	Road Repair	Repair Needed	Remove debris wrap, bring debris piles to remove debris, bring of fuel one wrapable bundle 20' to 40', slash bags for glass fibers, 2 person crew 2 hours to slash.		1558
127A	Medium	Completed Road Line	Repair Needed	Full flagging and base for - improve large pile of debris low standing, full back berm and cap, debris - green material across swath		204
128W	Medium	Completed Road Line	Repair Needed	Full flagging and base for - improve large pile of debris low standing, full back berm and cap, debris - green material across swath		176
128P	Medium	Road Repair	Repair Needed	Remove debris wrap, bring debris piles to remove debris, bring of fuel one wrapable bundle 20' to 40', slash bags for glass fibers, 2 person crew 2 hours to slash.		7