

Suppression Repair Tiles

Cedar Creek
OR-WF-220180
10/23/2022 24 Hour
127,283 acres at 10/20/2022 @ 2027
1:11,100,000
Div P2

- Accountable Property - Repair Status
In Use - Fire Management (8)
Completed - Inspected (2)
Accountable Property
Other Property (6)
Pump (1)
Water Tank (3)
In Use - Fire Management (10)
Repair Needed (19)
Completed - Ready for Inspection (1)
Completed - Inspected (43)
Slings (4)
Drop Point (1)
Value at Risk (3)
Other (1)
Gate (2)
Structure Wrap (9)
Road Repair (4)
Repair Point (29)
Landing or Log Deck (3)
Dozer Push (15)
Culvert (1)
Safety Zone (1)
Completed Dozer Line (16)
Completed Hand Line (33)
Completed Road as Line (5)
Road Repair (3)
Needs Assessment (5)
Repair Needed (37)
In Progress (1)
Completed - Ready for Inspection (1)
Completed - Inspected (13)
Contained
Uncontained
Wildfire Daily Fire Perimeter
Interior Roads
Secondary Highway
Paved Roads
Dirt (Not Paved)
Paved Road
Gravel Road
Dirt Road
Unimproved Roads
Closed Roads
Wilderness
Roadless Area

Note: This map and associated tables have been filtered to only show Repair Points / Lines of Medium or High priority. There exists numerous other features or low priority repair needs throughout the fire area. The intended use of this map is to define/represent the repair work to be completed during IMT12 oversight of this incident. This map should NOT be considered a complete source for repair information.



Div P2

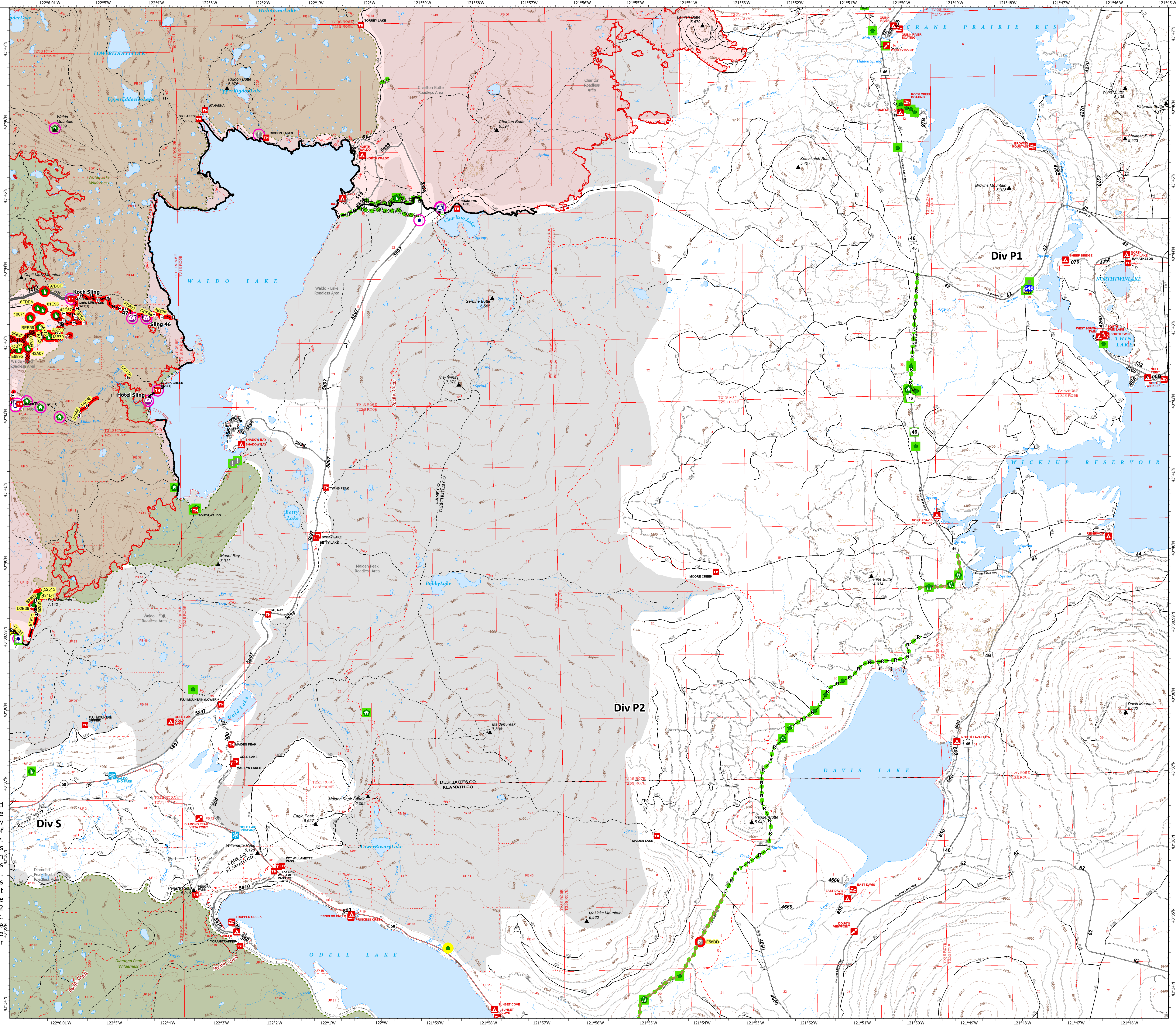


Table with 12 columns: Repair ID, Priority, Point Type, Status, Repairs Needed, Repair Comments, Latitude, Longitude. Contains detailed data for specific repair points.

Table with 5 columns: Repair ID, Priority, Line Type, Status, Repairs Needed, Repair Comments, Len (ft). Contains data for repair lines and their associated comments.

Table with 5 columns: Repair ID, Priority, Line Type, Status, Repairs Needed, Repair Comments, Len (ft). Contains data for repair lines and their associated comments.