

Suppression Repair Tiles

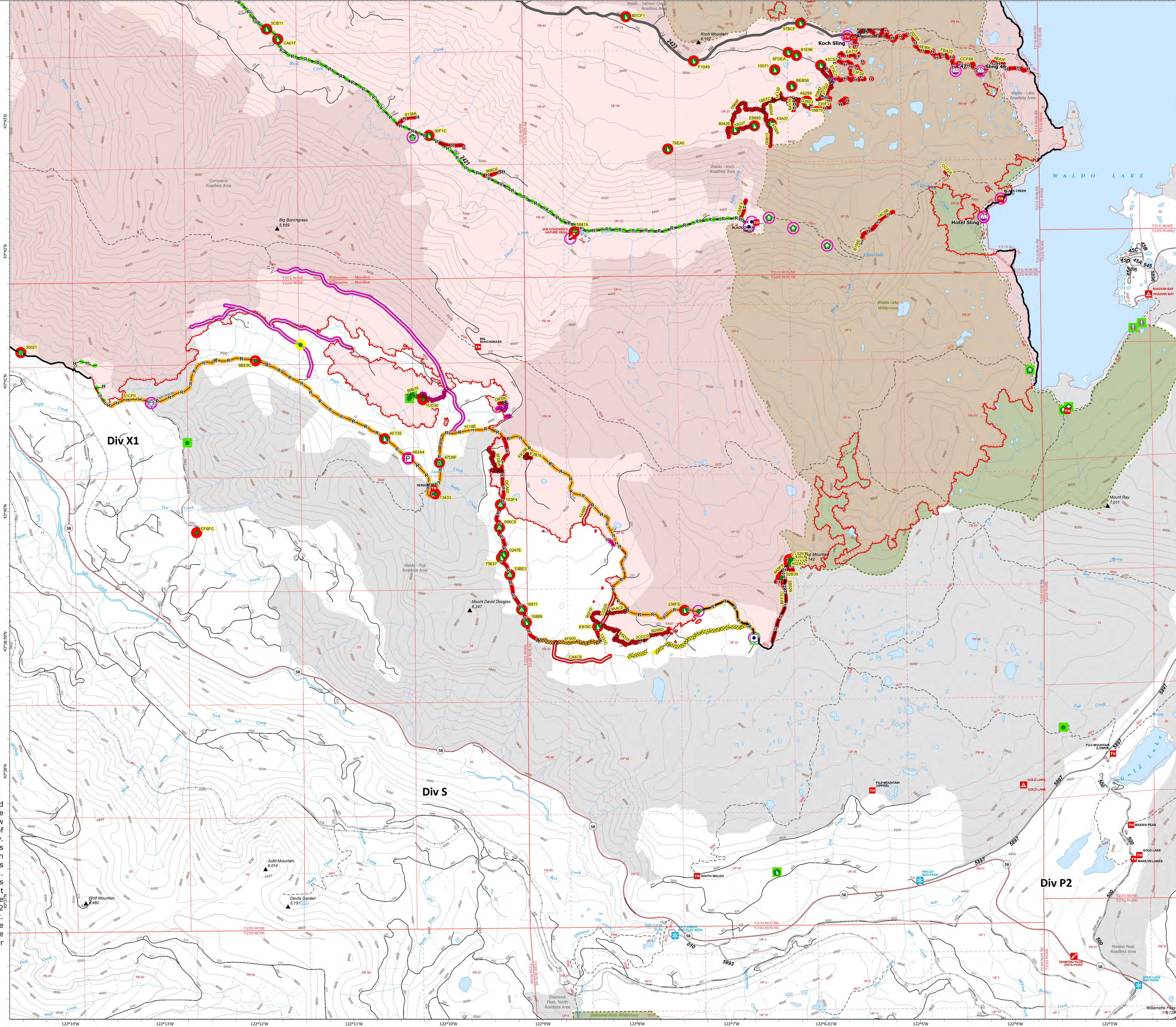
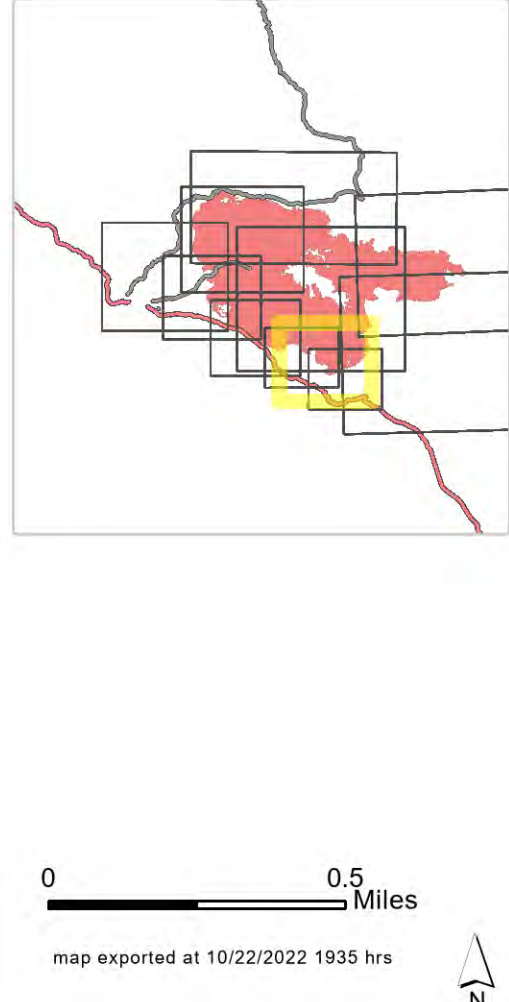
Cedar Creek
OR-WF-2022-24 Hour
10/23/2022 24 Hour
1:11,100,000
Div S
1:11,100,000

- Accountable Property - Repair Status**
- In Use - Fire Management (8)
 - Completed - Inspected (2)
- Accountable Property**
- Owner Property (6)
 - Pure (1)
 - Water Tank (2)
 - In Use - Fire Management (11)
 - Repair Needed (42)
 - Completed - Ready for Inspection (1)
 - Completed - Inspected (10)
 - Sling Site (4)
 - Value at Risk (2)
 - Water Development or Draft Site (3)
 - Structure Wap (7)
 - Road Repair (2)
 - Repair Point (18)
 - Landing or Log Deck (4)
 - Dozer Push (24)
 - Completed Dozer Line (27)
 - Completed Hand Line (40)
 - Completed Road as Line (8)
 - Access or Improved Road (7)
 - In Use - Fire Management (8)
 - Needs Assessment (5)
 - Repair Needed (36)
 - In Progress (3)
 - Completed - Ready for Inspection (3)
 - Completed - Inspected (6)
- Legend**
- Contained
 - Uncontained
 - Wildfire Daily Fire Perimeter
 - Interior Roads
 - Secondary Highway
 - Paved Road
 - Dirt (Not Paved)
 - Paved Road
 - Gravel Road
 - Unimproved Road
 - Closed Roads
 - Wilderness
 - Roadless Area

Note: This map and associated tables have been filtered to only show Repair Points / Lines of Medium or High priority. There exists numerous other features of unknown or low priority repair needs throughout the fire area. The intended use of this map is to define/represent the repair work to be completed during IMT12 oversight of this incident. This map should **NOT** be considered a complete source for repair information.



Div S



Repair ID	Priority	Point Type	Status	Repairs Needed	Repair Comments	Latitude	Longitude
R001	High	Dozer Push	Repair Needed	FILL REPAIR	R001 REPAIR: FILL IN BRN, TUNE IN DIRT, (Slopes entrance, water bar as needed)	43°30.587' N	122°09.267' W
R002	High	Dozer Push	Repair Needed	FILL REPAIR	R002 REPAIR: FILL IN BRN, TUNE IN DIRT, (Slopes entrance, water bar as needed)	43°30.587' N	122°09.267' W
R003	High	Dozer Push	Repair Needed	FILL REPAIR	R003 REPAIR: FILL IN BRN, TUNE IN DIRT, (Slopes entrance, water bar as needed)	43°30.587' N	122°09.267' W
R004	High	Dozer Push	Repair Needed	FILL REPAIR	R004 REPAIR: FILL IN BRN, TUNE IN DIRT, (Slopes entrance, water bar as needed)	43°30.587' N	122°09.267' W
R005	High	Dozer Push	Repair Needed	FILL REPAIR	R005 REPAIR: FILL IN BRN, TUNE IN DIRT, (Slopes entrance, water bar as needed)	43°30.587' N	122°09.267' W

Repair ID	Priority	Line Type	Status	Repairs Needed	Repair Comments	Len (ft)
R006	High	Access or Improved Road	Repair Needed	FILL REPAIR	R006 REPAIR: FILL IN BRN, TUNE IN DIRT, (Slopes entrance, water bar as needed)	100
R007	High	Access or Improved Road	Repair Needed	FILL REPAIR	R007 REPAIR: FILL IN BRN, TUNE IN DIRT, (Slopes entrance, water bar as needed)	100
R008	High	Access or Improved Road	Repair Needed	FILL REPAIR	R008 REPAIR: FILL IN BRN, TUNE IN DIRT, (Slopes entrance, water bar as needed)	100

Repair ID	Priority	Line Type	Status	Repairs Needed	Repair Comments	Len (ft)
R009	High	Access or Improved Road	Repair Needed	FILL REPAIR	R009 REPAIR: FILL IN BRN, TUNE IN DIRT, (Slopes entrance, water bar as needed)	100
R010	High	Access or Improved Road	Repair Needed	FILL REPAIR	R010 REPAIR: FILL IN BRN, TUNE IN DIRT, (Slopes entrance, water bar as needed)	100
R011	High	Access or Improved Road	Repair Needed	FILL REPAIR	R011 REPAIR: FILL IN BRN, TUNE IN DIRT, (Slopes entrance, water bar as needed)	100