

Incident Action Plan

Cedar Creek

Potter & Big Swamp



Operational Period

October 9-10, 2022

Dayshift - 0700 to 2000

Nightshift - 1730 to 0700



SCAN QR CODE

For
BRIEFING LINK
DOWNLOAD IAP
DOWNLOAD MAPS
Send in PHOTOS
CHECK-IN
Submit TIME to FINANCE

Cedar Creek - OR-WIF-220180 – P6PYP6 (0618)

Cedar Creek – WA DNR – 221-IWA

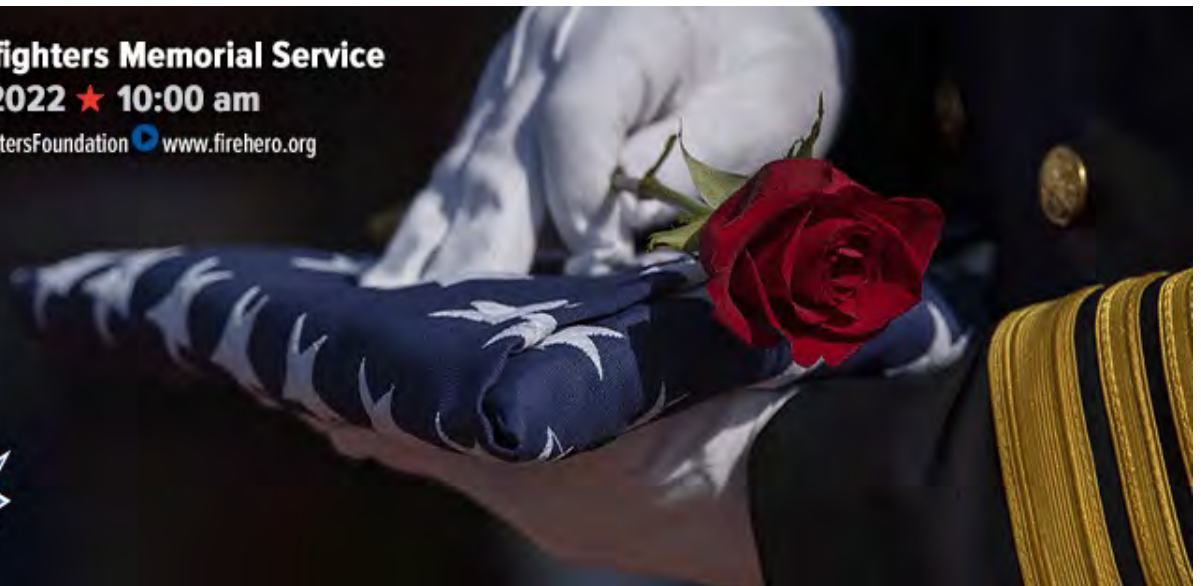
Potter – OR-WIF-220170 – P6PX6A (0618)

Big Swamp – OR-WIF-220189 – P6PY6M (0618)

National Fallen Firefighters Memorial Service

October 9, 2022 ★ 10:00 am


[@NationalFallenFirefightersFoundation](#) www.firehero.org



INCIDENT OBJECTIVES (ICS 202)

1. Incident Name:	2. Operational Period: DAY	
CEDAR CREEK	Date/Time From: 10/09/2022 0700 SUN	Date/Time To: 10/10/2022 0700 MON
3. Objective(s):		
<p>Provide for firefighter and public safety; specifically manage risk to firefighters by ensuring hazards are identified, assessed and where possible mitigated. Be prepared to accept residual risk when exposure is commensurate with values threatened and the probability of achieving objectives is high.</p> <p>Implement operational plans to keep fire within established primary control lines to protect identified values at risk including:</p> <ul style="list-style-type: none"> • Oakridge, Westfir, and High Prairie, • Highway 58 and Forest Road 19, • Union Pacific railroad corridor and • Waldo Lake and associated recreational investments • Private infrastructure and recreational investments within surrounding Cascade Lakes Highway. • Willamette Pass Ski-Area; Private infrastructure, and Forest Recreational Investments. <p>Promote coordination and partnership by developing clear dialogue and providing timely information between the IMT, affected agencies, and the public. Engage in effective communication with Agency Administrators and cooperators.</p> <p>Coordinate with Resource Advisors to complete fire suppression and approved repair work to protect natural and cultural values.</p>		
4. Operational Period Command Emphasis:		
Be prepared for receptive fuel conditions and active fire behavior throughout the entire burn period. Ensure a seamless transfer of command by adding additional focus to communications.		
General Situational Awareness:		
5. Site Safety Plan Required? Yes <input checked="" type="checkbox"/> No <input type="checkbox"/>		
Approved Site Safety Plan(s) Located ICP		
6. Incident Action Plan (the items checked below are included in this Incident Action Plan):		
<input checked="" type="checkbox"/> ICS 202 <input checked="" type="checkbox"/> ICS 203 <input checked="" type="checkbox"/> ICS 204 <input checked="" type="checkbox"/> ICS 205 <input type="checkbox"/> ICS 205A <input checked="" type="checkbox"/> ICS 206	<input checked="" type="checkbox"/> ICS 207 <input type="checkbox"/> ICS 208 <input checked="" type="checkbox"/> ICS 220 <input checked="" type="checkbox"/> Map/Chart <input checked="" type="checkbox"/> Weather Forecast/Tides/Currents	Other Attachments: <input checked="" type="checkbox"/> FIRE BEHAVIOR, SAFETY MESSAGE <input checked="" type="checkbox"/> HR MESSAGE, FINANCE <input checked="" type="checkbox"/> LOGISTICS INFO, PHONE LISTS <input checked="" type="checkbox"/> UNIT LOG, CHECK-IN / DEMOB
7. Prepared by: JILL JOHNSON	Position/Title: PSC2	Signature: <i>Jill Johnson</i>
8. Approved by Incident Commander:	Name: JEFF DIMKE	Signature: <i>Jeff Dimke</i>
ICS 202	IAP Page	Date/Time: 10/08/2022/2009

ORGANIZATION ASSIGNMENT LIST (ICS 203)

1. Incident Name:		2. Operational Period: DAY	
CEDAR CREEK		Date/Time From: 10/09/2022 0700 SUN	Date/Time To: 10/10/2022 0700 MON
3. Incident Commander(s) and Command Staff:		SUPPLY UNIT	JOHN KAUPA
IC/UC	BOB SHINDELAR	FACILITIES UNIT	TOM BOYD WHIT SPENCER
DEPUTY	JEFF DIMKE	GROUND SUPPORT UNIT	DAVE HARSH (ICP) JON KAUTT (JUNCTION CAMP)
SAFETY OFFICER	JACK CATES TROY CORN	COMMUNICATIONS UNIT	MISSY PARKER
INFORMATION OFFICER	JOEL BRUMM LIV STECKER	FOOD UNIT	LAURA MILLER
LIAISON OFFICER	SCOTT CRAWFORD JEFF SEVIGNEY		
HUMAN RESOURCES	SUSIE MANEZES DEBRA PACKARD		
		7. Operations Section:	
		FIELD OPS	AARON ROWE MIKE DAVIS (T)
		PLANNING OPS	TONY ENGEL TOMMY MENTZER (T)
		Branch	WEST
		BRANCH DIRECTOR	AARON ROWE HECTOR MEDRANO (T)
		DIVISION/GROUP	A ISAIAH SALSKY
		DIVISION/GROUP	T SAM STEINSHOUER
		DIVISION/GROUP	W PHIL GRAHAM
		DIVISION/GROUP	X DENNIS MAWHINNEY
		DIVISION/GROUP	Y BOB HINDS
		DIVISION/GROUP	P JOE HARRIS
		DIVISION/GROUP	POTTER/BIG SWAMP QUINLAN ANDERSON
		DIVISION/GROUP	R JEREMY KOLAKS
		DIVISION/GROUP	NIGHT MICHAEL SCHINSTOCK
		7b. Air Operations Branch:	
		AIR OPS BRANCH DIRECTOR	PAUL BALFOUR
		AIR SUPPORT SUPERVISOR	ALBERT FARIA
		8. Finance/Administration Section:	
		CHIEF	CHERI FULLER
		DEPUTY	CHRISTINA GOEBEL
		TIME UNIT	STEVE CROW
		PROCUREMENT UNIT	MARK BOHNET
		COST UNIT	KAY HIGH (VIRTUAL)
		ICPI	ROB HECHINGER
6. Logistics Section:			
CHIEF		KEVIN HAUGHTON	
DEPUTY		RANDY SPIERING (JUNCTION CAMP)	
9. Prepared By:		Name: JILL JOHNSON	Position/Title: PSC
		Date/Time: 10/08/2022 2000	Signature: 
ICS 203	IAP Page		

FIRE WEATHER FORECAST

FORECAST NO:	65	NAME OF FIRE:	Cedar Creek
PREDICTION FOR:	Sunday, Oct 09, 2022	UNIT:	OR-WIF-220180
ISSUED:	1900 PDT, Oct 08, 2022	Incident Meteorologist:	Bob Tobin

*** NEAR CRITICAL WEATHER CONDITIONS THROUGH THE WEEK ***

DISCUSSION: High pressure will begin to bend down today in response to an incoming cold front on Monday. Conditions will continue to be warm and dry with a strong inversion and poor mixing. The cold front will help to mix out the inversion with cooler temperatures and higher relative humidity. Then the region will go into an extended period of mainly easterly winds each night. This will result in lower relative humidity...poor recoveries and increased fire activity through the remainder of the week.

SUNDAY: WARM DRY AND UNSTABLE

WEATHER:	Mostly sunny. Widespread smoke and haze	MAX TEMPS:	West: 75-83 East: 73-80
WIND (EYE LEVEL, MPH):	Sheltered areas: VRB 2-5 mph through 1200, then upslope 3-6 mph. Ridges, unsheltered areas, wind-aligned drainages: ESE 3-8 through 1200 then shifting to NW 5-10 gust 15. East of the Crest: VRB 3-6 becoming NW-N 5-10 after 1400.	MIN RH:	West: 15-30% East: 14-20%
HAINES (HIGH LEVEL):	5 (Stability 3, moisture 2)	CWR:	0%
PEAK MIXING HEIGHT/WIND:	8,500 ft AGL/N-NW 5-15 mph	Rain Amount:	0.00
INVERSION:	Strong, mid-slope, mixing out after 1400	LAL:	1

SUNDAY NIGHT: LIGHT EAST-SOUTHEAST WIND AND POOR TO MODERATE RECOVERIES ON RIDGES

WEATHER:	Mostly clear	CWR:	0%
WIND (EYE LEVEL, MPH):	Sheltered areas, mid-slopes, and valley bottoms: Becoming drainage 3-6. Ridges: Becoming E-SE 5-10 gust 15. East Side: SE-S 3-5.	Rain Amount:	0.00
MIN TEMPS:	Ridges: 50-60, Midslope and below: 50-55, East: 45-55.		
MAX RH:	Ridges to mid-slope: 35-50%, Mid-slope and below: 50-60%, East of the crest: 55-65%		
INVERSION:	Moderate to strong developing mid-slope after 2000.		

MONDAY: DRY COLD FRONT PASSAGE

WEATHER:	Partly cloudy, cooler and breezy.	MAX TEMPS:	West: 70-76 East: 65-72
WIND (EYE LEVEL, MPH):	Sheltered areas: VRB 2-5 mph through 1000, then NW 5-10. Ridges, unsheltered areas, wind-aligned drainages: NW 8-12 gusts 20. East of the Crest: NW 10-12 gust 20.	MIN RH:	West: 30-40% East: 25-35%
HAINES (HIGH LEVEL):	4 (Stability 4, moisture 2)	CWR:	0%
PEAK MIXING HEIGHT/WIND:	6,500 ft AGL/N-NW 5-15 mph	Rain Amount:	0.00
INVERSION:	Moderate, mid-slope, mixing out after 1200	LAL:	1

EXTENDED OUTLOOK:

TUESDAY:	Mostly cloudy then clearing. Highs high 50s to mid 60s....Min RH 45-55%...NW general winds 5-10 gust 15 mph....winds NW-NE 8-12 gusts 15 mph.
WEDNESDAY:	Sunny and warmer. Poor RH recoveries. Highs low 60s-low 70s...Min RH 20-30%...E-SE winds 8-12 gust 20 mph.
THURSDAY:	sunny, warmer, and drier. Highs mid-60s to mid-70s....Min RH 20-30%....E-SE winds early becoming NW with gusts up to 15 mph after 1400.

FIRE BEHAVIOR FORECAST

FORECAST NUMBER: 65	TYPE OF FIRE: Wildland Fire
FIRE NAME: Cedar Creek	OPERATIONAL PERIOD: 10/9-10/2022, 0700-0700
DATE ISSUED: 10/8/2022	TIME ISSUED: 1900
UNIT: USFS-OR-WIF	SIGNED: Don Strand, FBAN

INPUTS

WEATHER SUMMARY: **Mostly Sunny-** Temp 83° Relative Humidity 14 (east) -15% (west) 5000 ft Wind afternoon NW 5 to 10 with gusts to 15 mph. Haines 5 unstable)

See Weather Forecast for detailed information

Fire Behavior Summary

GENERAL: West Branch: Primary fuel types are TL5 and TU5. **TL5** is compact short needle conifer litter, found primarily in 2nd growth Douglas fir plantations. **TU5** is timber overstory with very high surface fuel load- short needle conifer with heavy brush and down log fuel loading in mature or old growth stands. Lichen is present across the landscape and spots readily. East Branch: Timber stands with needle litter (**TL3**), dominated by Fir, Hemlock, or Lodgepole Pine. **TL8** is timber stands with needle litter dominated by Ponderosa Pine. **TU5** is timber overstory with very high surface fuel load- short needle conifer with heavy brush and down log fuel loading.

Fuel Type- Branch	Head ROS	Head FL	Spot Distance
Timber litter (TL5)	Up to 7 ch/hr. West	Up to 3 feet	Up to 0.3 mile
Timber understory (TU5)	Up to 7 ch/hr. Both	Up to 7 feet	Up to 0.3-mile W; 0.2 mi E
Timber litter, short needle (TL3)	Up to 2 ch/hr. East	Up to 2 feet	Up to 0.2 mile
Timber litter, long needle (TL8)	Up to 7 ch/hr. East	Up to 4 feet	Up to 0.2 mile

Persistent warm and dry conditions with an unstable environment will result in another day of **critical burning conditions today**. Expect moderate fire behavior with an increase in ROS and flame lengths. Expect a longer burn period today on the west branch due to the cumulative low Rh's with poor overnight recoveries. Expect islands of unburned fuel to burn with moderate intensity. Smoldering, backing, and group torching is expected.

Haines: 5 **LAL:** 1 **POI:** 60-90%: **FDFM:** 3-6%,
Local Thresholds for increased fire behavior on West Branch: 20' Wind Speed over 10 MPH, RH less than 25% , Temperature above 85 degrees, 10-hr fuel moisture less than 4%

Today's Fire Behavior

West Branch

DIV A, Y: Pockets of unburned fuels will continue to consume, especially in Div. A at both ends of the division. Expect mostly smoldering and creeping and isolated torching due to heavy fuels under sheltered canopy.

DIV W, X: Unburned islands of fuels above 4000' will continue to exhibit increased rates of spread today with single tree torching and short uphill runs. Expect smoldering in compact needle litter especially in riparian areas.

DIV T: Fuels are exceptionally dry and receptive to spotting. Moderate to high rates of spread and high flame lengths are expected if the smoke clears out. Alignment of east winds with terrain will push fire towards Eagle Creek to the west yet not push upslope to Mt. David Douglas. Moderate to active fire behavior is expected over the entire operational period, especially at higher elevations. With NW wind, smoke drift may impact fire activity.

East Branch, DIV R and P: Smoldering and creeping with isolated torching in lichen ladder fuels, especially on south aspects with slope. With NW wind, smoke drift may impact fire activity.

AIR OPERATIONS: Aviation will be impacted by limited visibility due to smoke and morning inversion until 1400. With afternoon NW winds, eastern portions of the fire may have limited visibility.

SAFETY

Reburn potential exists under heat treated conifer reproduction in areas of dirty burn.

Fire damaged snags and green trees near fire edges have potential to become overhead hazards.



SAFETY MESSAGE

9 October 2022

INCIDENT: CEDAR CREEK

OPERATIONAL PERIOD: 0700-0700

TOPICS:

TRANSFER OF COMMAND

NW12 has assumed command of the incident. Transition of Overhead and personnel will continue through the duration of the incident. Transition is a time that can be marred by extreme success or failure. Ensure positive relationship building and open lines of communications. Take a few extra minutes to get to know new personnel and provide a good briefing of actions taken up to the transition. Thank you to NW9 for all the great and safe work!

INCIDENT MEDICAL PLAN

Take a few moments before you engage to review the NW12 Incident Medical Plan along with the MIR located on page 119 in the IRPG. Identify those personnel within your division that are certified EMS responders.

DELIBERATE RISK ASSESSMENT SUMMARY

NW12 utilizes a hazard summary to show the hazards, risk level and mitigations from the Deliberate Risk Assessment Process. You will find this summary in the IAP. Be sure to review and provide feedback to your DIVS and Line Safety.

SAFETY OFFICER: Troy Corn, Jack Cates

DEBILITATE RISK ASSESSMENT-HAZARD SUMMARY

9 OCT 2022

Hazard	Mitigation	Post Risk
Extraction Time	Identify medivac sites and helispots. Initiate ground transport to accident site for transport capability. Identify EMT/EMTP from resources assigned to division. Provide line qualified paramedics to each division as available. Review IWI protocol to ensure familiarity. Utilize agency and civilian medivac as treatment/timing dictates. Evaluate on-going need for repositioning medical personnel. Provide Dust abatement on Helispots as needed.	HIGH
Aircraft	Utilize Air Attack. Ensure all resources are a safe distance from all bucket and retardant drops. Establish LCES. Utilize air to ground primary for fixed wing, air to ground 2 for bucket work as needed. Reference IRPG (Safe aircraft operations pg. 61-62). Ensure IA resources have coordination with unassigned local air resources to provide deconfliction.	HIGH
Hazard Trees	Use avoidance to limit exposure time. Fall ahead to avoid exposure. Use qualified fallers or alternate methods if needed. Conduct on- going risk analysis of all work areas. Follow Hazard Tree Safety Guidelines (IRPG page 20-21).	HIGH
Heavy Equipment	Post lookouts around equipment work areas. Establish communications with equipment boss and operator. Do not work down slope from equipment. Follow agency guidelines for chipping operations.	HIGH
Physical Factors	Maintain hydration schedule. Closely monitor work rate and implement rest periods. Maintain nutrition. Ensure adequate work/rest.	MODERATE
Fire Behavior	Be aware of burn windows and weather impacts and min/max RH for flashy fuels/local conditions. Report changes to FBAN and IMET. Establish MAP for disengagement to provide for an orderly retreat given lack of safety zones. Have a plan for disengagement that establishes a designated meeting point and maintains personnel accountability.	MODERATE
Steep Terrain/Gravity	Establish LCES. Do not work crews above or below each other. Post lookouts for rolling material. Watch footing in loose soil, rock and around vegetation. Do not work below heavy equipment. Scout and identify travel routes.	MODERATE
Transportation	Sign all incident roads that provide access to divisions. Provide daily updated travel plan maps. Practice defensive driving. In local communities obey the posted speed limits. Use reader boards to provide advanced warning and control entry to base camp as needed. Identify and evaluate contingency and alternate escape and travel routes. Provide dust abatement and grading as needed. Provide advanced scouting for transport access and bridge weight restrictions.	MODERATE
Unburned Fuels/Firing Ops	Establish LCES. Ensure management action points are implemented and followed. Weather updates as needed during burning operations. Locate indirect firelines to minimize unburned fuels. Follow Interagency Ignition Guide. Ensure communications between all firing operations. Establish road security at all firing sites. Follow approved firing plan for unburned fuels.	MODERATE
Environmental Factors	Assign medical personnel to camp. Assess for known allergies and report to medical personnel. Obtain Bee Bopper/wasp spray and yellow jacket traps. Maintain an awareness wildlife and poison oak. Identify and report allergies to your chain of command.	MODERATE
Communication	Evaluate for dead zones prior to engagement. Utilize human repeaters as needed. Ensure accountability of resources in problem areas. Spiking resources must have communication coverage.	LOW
Viral Transmission Mitigations, Communicable Disease	Maintain awareness of health, perform self checks, maintain social distancing, wear face coverings in accordance with CDC recommendations. Report and isolate if not feeling well. Use remote briefings, spike camps and logistical layouts that provide for social distancing as necessary. Establish liaison with Lane County Public Health.	LOW
Public Interaction	Implement area and road closures as necessary. Maintain a lookout for hunters in and out of closure areas. Maintain awareness of evacuation areas and provide accurate information dissemination.	LOW
Initial Attack	Ensure identified IA resources are briefed of expectations and ensure communication plan is provided. Ensure resources are briefed on IA command structure. Provide identified crews with area maps.	LOW

Division/Group Assignment List (ICS 204 WF)

Controlled Unclassified Information//Basic

1. Incident Name:				3.			
CEDAR CREEK				Branch: WEST		Division/Group A	
2. Operational Period: DAY							
Date/Time From: 10/09/2022 0700 SUN		Date/Time To: 10/09/2022 2000 SUN					
4. Operations Personnel							
FIELD OPERATIONS		AARON ROWE MIKE DAVIS (T)		BRANCH DIRECTOR		AARON ROWE HECTOR MEDRANO (T)	
DIVISION/GROUP SUPERVISOR		ISAAH SALSKY		AIR OPERATIONS BRANCH DIRECTOR		PAUL BALFOUR	
SAFETY OFFICER		TROY CORN JACK CATES					
5. Resources Assigned this Period							
Strike Team / Task Force / Resource Designator		LWD	Leader	Number Persons	Drop Off PT./Time	Pick Up PT./Time	
O-982 HEQB		10/13	TOBY BAKOS	1	ICP/0700	ICP/2000	
O-1008 HEQB		10/15	SETH POWELL	1	ICP/0700	ICP/2000	
O-1006 HEQB (T)		10/14	DAN O'NEAL	1	ICP/0700	ICP/2000	
E-553 WTT2 COASTAL RANGE FIRE SUPPORT		10/19	SEAN BOEHLJE	1	ICP/0700	ICP/2000	
E-554 WTT2 PARAGON WATER TENDERS		10/23	BILL POTTS	1	ICP/0700	ICP/2000	
E-567 ENG6 FIRST STRIKE		10/16	SPENCER BERLIER	3	ICP/0700	ICP/2000	
E-5523 ENG6 FIRST STRIKE ENVIRONMENTAL		10/09	ED FOOTE	3	ICP/0700	ICP/2000	
E-551 GRD2 STATEWIDE CONTRACT SERVICES		10/20	AUSTIN PARRETT	2	ICP/0700	ICP/2000	
E-558 EXC3 V WORKS, INC		10/14	JEREMY LINDSTROM	2	ICP/0700	ICP/2000	
E-526 LOGT PACIFIC RIDGELINE		10/18	MARK TRIPP	1	ICP/0700	ICP/2000	
O-1039 REAF		10/18	TARA INCE-JOHANNSEN (T)	1	ICP/0700	ICP/2000	
O-1060 REAF		10/16	MARK LEHNER	1	ICP/0700	ICP/2000	
S-1333 ALS 34		10/14	CHANDLER LEFEVER	2	ICP/0700	ICP/2000	
E-99 AMBULANCE 1		10/21	GEORGE DUARTE	2	ICP/0700	ICP/2000	
8. Division/Group Communication Summary							
Function	Channel	RX Frequency N/W	RX Tone/NAC	TX Frequency N/W	TX Tone/NAC	Mode	
COMMAND	1	170.0000 N	136.5	166.6750 N	136.5	A	
COMMAND	4	171.9000 N	136.5	165.9875 N	136.5	A	
TACTICAL	8	168.6000 N	136.5	168.6000 N	136.5	A	
AIR TO GROUND	13	168.3375 N		168.3375 N		A	
AIR TO GROUND	14	169.4625 N		169.4625 N		A	
9. Prepared By (Resource Unit Leader)			Approved By (Planning Section Chief)			Date	Time
TERI PARVIN			JILL JOHNSON			10/08/2022	2000

Division/Group Assignment List (ICS 204 WF)

Controlled Unclassified Information//Basic

1. Incident Name:				3.			
CEDAR CREEK				Branch: WEST		Division/Group A	
2. Operational Period: DAY							
Date/Time From: 10/09/2022 0700 SUN		Date/Time To: 10/09/2022 2000 SUN					
4. Operations Personnel							
FIELD OPERATIONS		AARON ROWE MIKE DAVIS (T)		BRANCH DIRECTOR		AARON ROWE HECTOR MEDRANO (T)	
DIVISION/GROUP SUPERVISOR		ISAAH SALSKY		AIR OPERATIONS BRANCH DIRECTOR		PAUL BALFOUR	
SAFETY OFFICER		TROY CORN JACK CATES					
5. Resources Assigned this Period							
Strike Team / Task Force / Resource Designator		LWD	Leader	Number Persons	Drop Off PT./Time	Pick Up PT./Time	
6. Control Operations/Work Assignments:							
<p>Task: Conduct suppression repair on the 1958 and 19 roads. Conduct point protection on Constitution Grove.</p> <p>Purpose: Return roads to previous maintenance standard. Secure fire edge on 19 road.</p> <p>End State: Roads are returned to pre-fire conditions.</p>							
7. Special Instructions:							
<ul style="list-style-type: none"> Be IA ready. Area to be avoided are marked with either black/yellow or red dot on white flagging. Consult resource advisors if you have any questions. Backhaul all excess equipment. <p>The Division Frequencies are shown on the Communication Plan (ICS 205) in the IAP.</p>							
8. Division/Group Communication Summary							
Function	Channel	RX Frequency N/W	RX Tone/NAC	TX Frequency N/W	TX Tone/NAC	Mode	
COMMAND	1	170.0000 N	136.5	166.6750 N	136.5	A	
COMMAND	4	171.9000 N	136.5	165.9875 N	136.5	A	
TACTICAL	8	168.6000 N	136.5	168.6000 N	136.5	A	
AIR TO GROUND	13	168.3375 N		168.3375 N		A	
AIR TO GROUND	14	169.4625 N		169.4625 N		A	
9. Prepared By (Resource Unit Leader)			Approved By (Planning Section Chief)			Date	Time
TERI PARVIN			JILL JOHNSON			10/08/2022	2000

Division/Group Assignment List (ICS 204 WF)
Controlled Unclassified Information//Basic

1. Incident Name:				3.		
CEDAR CREEK				Branch: WEST	Division/Group T	
2. Operational Period: DAY						
Date/Time From: 10/09/2022 0700 SUN		Date/Time To: 10/09/2022 2000 SUN				
4. Operations Personnel						
FIELD OPERATIONS	AARON ROWE MIKE DAVIS (T)			BRANCH DIRECTOR	AARON ROWE HECTOR MEDRANO (T)	
DIVISION/GROUP SUPERVISOR	SAM STEINSHOUER			AIR OPERATIONS BRANCH DIRECTOR	PAUL BALFOUR	
SAFETY OFFICER	TROY CORN JACK CATES					
5. Resources Assigned this Period						
Strike Team / Task Force / Resource Designator	LWD	Leader	Number Persons	Drop Off PT./Time	Pick Up PT./Time	
O-905 TFLD	10/12	TED PIEHL	1	**SWING SHIFT**/		
O-983 TFLD	10/12	PAUL BASYE	1	ICP/0700	ICP/2000	
O-1086 STEN	10/22	ERIC KIEHN	1	ICP/0700	ICP/2000	
C-116 CRW1 GRAYBACK FORESTRY 17B	10/09	GAVIN SAEMAN	20	ICP/0700	ICP/2000	
C-123 CRW1 PLUMAS IHC	10/20	MIKE SHERMAN	18	ICP/0700	ICP/2000	
C-125 CRW1 ENTIAT IHC	10/16	DANIEL PICKARD	23	ICP/0700	ICP/2000	
C-126 CRW1 FEATHER RIVER IHC				ICP/0700	ICP/2000	
C-127 CR2I PATRICK ENV	10/21	DUSTIN DUFFY	20	ICP/0700	ICP/2000	
C-5033 CRW2 PACIFIC OASIS 6	10/13	GEOFFERY ANDERSON	20	ICP/0700	ICP/2000	
O-1046 FMOD PACIFIC RIDGELINE	10/18	ADAM MILLER	2	ICP/0700	ICP/2000	
O-1075 FMOD TIRY TUDOR	10/21	JOSH TUDOR	1	ICP/0700	ICP/2000	
O-1076 FMOD TIMBER TIPPER	10/21	BRANDON DANVILLE	2	ICP/0700	ICP/2000	
O-5057 FMOD TIMBER TIPPER	10/09	GERALD FLOYD	2	ICP/0700	ICP/2000	
E-573 ENG3 CA-CNF E328	10/20	ARTHUR BUONAURO	5	ICP/0700	ICP/2000	
E-592 ENG3 FIREMOG	10/21	MIKE PARENT	6	ICP/0700	ICP/2000	
8. Division/Group Communication Summary						
Function	Channel	RX Frequency N/W	RX Tone/NAC	TX Frequency N/W	TX Tone/NAC	Mode
COMMAND	3	171.0625 N	136.5	162.8125 N	136.5	A
COMMAND	2	170.6875 N	136.5	166.5750 N	136.5	A
TACTICAL	9	166.7250 N	136.5	166.7250 N	136.5	A
AIR TO GROUND	13	168.3375 N		168.3375 N		A
AIR TO GROUND	14	169.4625 N		169.4625 N		A
9. Prepared By (Resource Unit Leader)			Approved By (Planning Section Chief)		Date	Time
TERI PARVIN			JILL JOHNSON		10/08/2022	2000

Division/Group Assignment List (ICS 204 WF)
Controlled Unclassified Information//Basic

1. Incident Name:				3.		
CEDAR CREEK				Branch: WEST	Division/Group T	
2. Operational Period: DAY						
Date/Time From: 10/09/2022 0700 SUN		Date/Time To: 10/09/2022 2000 SUN				
4. Operations Personnel						
FIELD OPERATIONS	AARON ROWE MIKE DAVIS (T)			BRANCH DIRECTOR	AARON ROWE HECTOR MEDRANO (T)	
DIVISION/GROUP SUPERVISOR	SAM STEINSHOUER			AIR OPERATIONS BRANCH DIRECTOR	PAUL BALFOUR	
SAFETY OFFICER	TROY CORN JACK CATES					
5. Resources Assigned this Period						
Strike Team / Task Force / Resource Designator	LWD	Leader	Number Persons	Drop Off PT./Time	Pick Up PT./Time	
E-569 ENG6 FRANCO REFORESTATION	10/13	HUMBERTO CHOY	3	ICP/0700	ICP/2000	
E-589 ENG6 FENIX FORESTRY	10/21	SUZANNE FLYNN	3	ICP/0700	ICP/2000	
E-591 ENG6 C & K WILDLAND FIRE	10/21	GREG NELSON	3	ICP/0700	ICP/2000	
E-593 ENG3 J3 CONTRACTING	10/21	STEWART NICHOLS	3	ICP/0700	ICP/2000	
E-5058 ENG6 DB JET ENTERPRISES	10/11	MAT BLEDSOE	3	ICP/0700	ICP/2000	
ENG4 452 WIF MFRD (L/L)		BRIAN BRADBURY	4	ICP/0700	ICP/2000	
ENG4 454 WIL MFRD (L/L)		JOHN CAROON	4	ICP/0700	ICP/2000	
E-159 WTT2 BELLOIR & SONS	10/18	ROGER BELLOIR	1	ICP/0700	ICP/2000	
E-5008 WTS2 TUB SPRINGS EQUIPMENT	10/13	JOHN MACNAMEE	1	ICP/0700	ICP/2000	
E-5109 WTS2 WILLOW CANYON TRUCKING	10/21	JOHN BARRETT	1	ICP/0700	ICP/2000	
E-5518 WTS2 R25 ENTERPRISES	10/13	RON HAGENAUER	1	ICP/0700	ICP/2000	
DOZ3 NEWBERRY DES NF (L/L)			1	ICP/0700	ICP/2000	
E-586 DOZ3 ROBERT MURRAY	10/21	KENNY MURRAY	2	ICP/0700	ICP/2000	
E-570 SKD2 BREEZE BY FIRE	10/17	CALEB JOCK	2	ICP/0700	ICP/2000	
E-5019 FEL1 TJS CUTTING	10/10	AUSTIN SEEKINS	2	ICP/0700	ICP/2000	
8. Division/Group Communication Summary						
Function	Channel	RX Frequency N/W	RX Tone/NAC	TX Frequency N/W	TX Tone/NAC	Mode
COMMAND	3	171.0625 N	136.5	162.8125 N	136.5	A
COMMAND	2	170.6875 N	136.5	166.5750 N	136.5	A
TACTICAL	9	166.7250 N	136.5	166.7250 N	136.5	A
AIR TO GROUND	13	168.3375 N		168.3375 N		A
AIR TO GROUND	14	169.4625 N		169.4625 N		A
9. Prepared By (Resource Unit Leader)			Approved By (Planning Section Chief)		Date	Time
TERI PARVIN			JILL JOHNSON		10/08/2022	2000

Division/Group Assignment List (ICS 204 WF)
Controlled Unclassified Information//Basic

1. Incident Name:				3.			
CEDAR CREEK				Branch:		Division/Group	
2. Operational Period: DAY				WEST		T	
Date/Time From: 10/09/2022 0700 SUN		Date/Time To: 10/09/2022 2000 SUN					
4. Operations Personnel							
FIELD OPERATIONS		AARON ROWE MIKE DAVIS (T)		BRANCH DIRECTOR		AARON ROWE HECTOR MEDRANO (T)	
DIVISION/GROUP SUPERVISOR		SAM STEINSHOUER		AIR OPERATIONS BRANCH DIRECTOR		PAUL BALFOUR	
SAFETY OFFICER		TROY CORN JACK CATES					
5. Resources Assigned this Period							
Strike Team / Task Force / Resource Designator		LWD	Leader	Number Persons	Drop Off PT./Time	Pick Up PT./Time	
O-893 ARCH I		10/21	ALICIA BONSKOWSK	1	ICP/0700	ICP/2000	
O-960 REAF		10/11	JASON MCINTEER	1	ICP/0700	ICP/2000	
S-1334 ALS 35		10/10	SAVION SOLEIL	2	ICP/0700	ICP/2000	
O-987 BLS 55		10/14	SAGE LYFORD	1	ICP/0700	ICP/2000	
E-257 AMBULANCE 3		10/10	AYALA RAHM	2	ICP/0700	ICP/2000	
6. Control Operations/Work Assignments:							
<p>Task: Hold and secure control line. Monitor area northeast of Mt. Fuji and Eagle Creek. Secure spot fire south of 5883 road.</p> <p>Purpose: To protect values at risk in the community of Oakridge and HWY 58.</p> <p>End State: Keep fire north of 5883 road. Ensure threat from fire is minimized.</p>							
7. Special Instructions:							
<ul style="list-style-type: none"> • Be IA ready. • Area to be avoided are marked with either black/yellow or red dot on white flagging. • Consult resource advisors if you have any questions. • Backhaul all excess equipment. <p>The Division Frequencies are shown on the Communication Plan (ICS 205) in the IAP.</p>							
8. Division/Group Communication Summary							
Function	Channel	RX Frequency N/W	RX Tone/NAC	TX Frequency N/W	TX Tone/NAC	Mode	
COMMAND	3	171.0625 N	136.5	162.8125 N	136.5	A	
COMMAND	2	170.6875 N	136.5	166.5750 N	136.5	A	
TACTICAL	9	166.7250 N	136.5	166.7250 N	136.5	A	
AIR TO GROUND	13	168.3375 N		168.3375 N		A	
AIR TO GROUND	14	169.4625 N		169.4625 N		A	
9. Prepared By (Resource Unit Leader)			Approved By (Planning Section Chief)			Date	Time
TERI PARVIN			JILL JOHNSON			10/08/2022	2000

Division/Group Assignment List (ICS 204 WF)
Controlled Unclassified Information//Basic

1. Incident Name:			3.			
CEDAR CREEK			Branch:		Division/Group	
2. Operational Period: DAY			WEST		W	
Date/Time From: 10/09/2022 0700 SUN		Date/Time To: 10/09/2022 2000 SUN				
4. Operations Personnel						
FIELD OPERATIONS		AARON ROWE MIKE DAVIS (T)		BRANCH DIRECTOR		AARON ROWE HECTOR MEDRANO (T)
DIVISION/GROUP SUPERVISOR		PHILLIP GRAHAM		AIR OPERATIONS BRANCH DIRECTOR		PAUL BALFOUR
SAFETY OFFICER		TROY CORN JACK CATES				
5. Resources Assigned this Period						
Strike Team / Task Force / Resource Designator		LWD	Leader	Number Persons	Drop Off PT./Time	Pick Up PT./Time
O-984 TFLD		10/12	DREW DINGMANN	1	ICP/0700	ICP/2000
E-576 ENG6 J.C. OROZCO		10/19	JAVIER OROZCO	3	ICP/0700	ICP/2000
E-587 ENG6 WINSTON, ROBIN DBA C & R REFORESTATION		10/21	JAY FLORA	3	ICP/0700	ICP/2000
E-581 EXC3 HUGHES, PATRICK		10/21	PATRICK HUGHES	2	ICP/0700	ICP/2000
O-977 REAF		10/10	NICHOLAS GRANT	1	ICP/0700	ICP/2000
S-279 REMS 1		10/21	TIM MCDANIEL	4	ICP/0700	ICP/2000
6. Control Operations/Work Assignments:						
Task: Continue to secure control lines.						
Purpose: To protect values at risk in community of Oakridge and HWY 58.						
End State: Keep fire north of railroad and the 352 and 353 roads.						
7. Special Instructions:						
<ul style="list-style-type: none"> • Be IA ready • Area to be avoided are marked with either black/yellow or red dot on white flagging. • Consult resource advisors if you have any questions. • Backhaul all excess equipment. <p>The Division Frequencies are shown on the Communication Plan (ICS 205) in the IAP.</p>						
8. Division/Group Communication Summary						
Function	Channel	RX Frequency N/W	RX Tone/NAC	TX Frequency N/W	TX Tone/NAC	Mode
COMMAND	2	170.6875 N	136.5	166.5750 N	136.5	A
TACTICAL	10	166.7750 N	136.5	166.7750 N	136.5	A
AIR TO GROUND	13	168.3375 N		168.3375 N		A
AIR TO GROUND	14	169.4625 N		169.4625 N		A
9. Prepared By (Resource Unit Leader)			Approved By (Planning Section Chief)		Date	Time
TERI PARVIN			JILL JOHNSON		10/08/2022	2000

Division/Group Assignment List (ICS 204 WF)
Controlled Unclassified Information//Basic

1. Incident Name:				3.		
CEDAR CREEK				Branch: WEST	Division/Group X	
2. Operational Period: DAY						
Date/Time From: 10/09/2022 0700 SUN		Date/Time To: 10/09/2022 2000 SUN				
4. Operations Personnel						
FIELD OPERATIONS	AARON ROWE MIKE DAVIS (T)			BRANCH DIRECTOR	AARON ROWE HECTOR MEDRANO (T)	
DIVISION/GROUP SUPERVISOR	DENNIS MAWHINNEY			AIR OPERATIONS BRANCH DIRECTOR	PAUL BALFOUR	
SAFETY OFFICER	TROY CORN JACK CATES					
5. Resources Assigned this Period						
Strike Team / Task Force / Resource Designator	LWD	Leader	Number Persons	Drop Off PT./Time	Pick Up PT./Time	
O-1021 TFLD	10/18	COLIN GUNDLE	1	ICP/0700	ICP/2000	
O-1036 TFLD (T)	10/18	MICHAEL GREGORY	1	ICP/0700	ICP/2000	
O-5257 HEQB	10/09	DANIEL CHAVEZ	1	ICP/0700	ICP/2000	
O-1038 HEQB (T)	10/17	STUART SMITH-BLOCKLEY	1	ICP/0700	ICP/2000	
FELB (T) WIF		MATT WITTREY	1	ICP/0700	ICP/2000	
O-841 FMOD TIMBER TIPPER	10/14	SKYLAR GARDNER	2	ICP/0700	ICP/2000	
C-115 CRW2 WEST COAST REFORESTATION	10/09	ABEL ANGULO	20	ICP/0700	ICP/2000	
C-120 CRW2 LOMAKSTSI ECOLOGICAL	10/21	BRAUILO MAYA	20	ICP/0700	ICP/2000	
C-5033 CRW2 PACIFIC OASIS 6	10/13	GEOFFERY ANDERSON	20	ICP/0700	ICP/2000	
E-548 ENG6 FIRST STRIKE ENVIRONMENT.	10/09	JERMAH SLIFER	3	ICP/0700	ICP/2000	
E-566 ENG6 NORTH PACIFIC FORESTRY	10/17	COLLIN FICCADENTI	3	ICP/0700	ICP/2000	
E-568 ENG6 FIRST STRIKE #19	10/16	GERALD COATS	3	ICP/0700	ICP/2000	
E-575 ENG6 J.C. OROZCO	10/19	SCOTT HANEY	3	ICP/0700	ICP/2000	
E-559 EXC3 OWENS FREIGHT LINES	10/14	LEVI HARDWICK	2	ICP/0700	ICP/2000	
E-580 EXC3 OWENS FREIGHT LINES	10/21	RANDY HUSTED	2	ICP/0700	ICP/2000	
8. Division/Group Communication Summary						
Function	Channel	RX Frequency N/W	RX Tone/NAC	TX Frequency N/W	TX Tone/NAC	Mode
COMMAND	2	170.6875 N	136.5	166.5750 N	136.5	A
TACTICAL	11	168.2500 N	136.5	168.2500 N	136.5	A
AIR TO GROUND	13	168.3375 N		168.3375 N		A
AIR TO GROUND	14	169.4625 N		169.4625 N		A
9. Prepared By (Resource Unit Leader)			Approved By (Planning Section Chief)		Date	Time
TERI PARVIN			JILL JOHNSON		10/08/2022	2000

Division/Group Assignment List (ICS 204 WF)
Controlled Unclassified Information//Basic

1. Incident Name:			3.			
CEDAR CREEK			Branch:		Division/Group	
2. Operational Period: DAY			WEST		X	
Date/Time From: 10/09/2022 0700 SUN		Date/Time To: 10/09/2022 2000 SUN				
4. Operations Personnel						
FIELD OPERATIONS		AARON ROWE MIKE DAVIS (T)		BRANCH DIRECTOR		AARON ROWE HECTOR MEDRANO (T)
DIVISION/GROUP SUPERVISOR		DENNIS MAWHINNEY		AIR OPERATIONS BRANCH DIRECTOR		PAUL BALFOUR
SAFETY OFFICER		TROY CORN JACK CATES				
5. Resources Assigned this Period						
Strike Team / Task Force / Resource Designator		LWD	Leader	Number Persons	Drop Off PT./Time	Pick Up PT./Time
E-321 CHSL ATLAS		10/16	JILLIAN FALGE	2	ICP/0700	ICP/2000
E-487 CHSL ATLAS TREE SURGERY INC		10/09	JASON MARTIN	2	ICP/0700	ICP/2000
O-390 REAF		10/11	THOMAS DAVIS	1	ICP/0700	ICP/2000
S-1127 RAT 2		10/20	ROBERT ABERLE	2	ICP/0700	ICP/2000
6. Control Operations/Work Assignments:						
Task: Hold and secure control line.						
Purpose: To protect values at risk in community of Oakridge.						
End State: Keep fire North of 58 road and east of the 5871 road.						
7. Special Instructions:						
<ul style="list-style-type: none"> • Be IA ready • Area to be avoided are marked with either black/yellow or red dot on white flagging. • Consult resource advisors if you have any questions. • Backhaul all excess equipment. <p>The Division Frequencies are shown on the Communication Plan (ICS 205) in the IAP.</p>						
8. Division/Group Communication Summary						
Function	Channel	RX Frequency N/W	RX Tone/NAC	TX Frequency N/W	TX Tone/NAC	Mode
COMMAND	2	170.6875 N	136.5	166.5750 N	136.5	A
TACTICAL	11	168.2500 N	136.5	168.2500 N	136.5	A
AIR TO GROUND	13	168.3375 N		168.3375 N		A
AIR TO GROUND	14	169.4625 N		169.4625 N		A
9. Prepared By (Resource Unit Leader)			Approved By (Planning Section Chief)		Date	Time
TERI PARVIN			JILL JOHNSON		10/08/2022	2000

Division/Group Assignment List (ICS 204 WF)
Controlled Unclassified Information//Basic

1. Incident Name:				3.		
CEDAR CREEK				Branch: WEST	Division/Group Y	
2. Operational Period: DAY						
Date/Time From: 10/09/2022 0700 SUN		Date/Time To: 10/09/2022 2000 SUN				
4. Operations Personnel						
FIELD OPERATIONS	AARON ROWE MIKE DAVIS (T)			BRANCH DIRECTOR	AARON ROWE HECTOR MEDRANO (T)	
DIVISION/GROUP SUPERVISOR	BOB HINDS			AIR OPERATIONS BRANCH DIRECTOR	PAUL BALFOUR	
SAFETY OFFICER	TROY CORN JACK CATES					
5. Resources Assigned this Period						
Strike Team / Task Force / Resource Designator	LWD	Leader	Number Persons	Drop Off PT./Time	Pick Up PT./Time	
O-959 TFLD	10/12	ANDREW SCHAFFRAN	1	ICP/0700	ICP/2000	
O-1028 TFLD	10/17	DAVID MAYNARD	1	ICP/0700	ICP/2000	
O-1029 HEQB	10/17	ETHAN CAMARENA (T)	1	ICP/0700	ICP/2000	
O-1022 HEQB	10/19	KYLE CRANMER	1	ICP/0700	ICP/2000	
O-868 FMOD PACIFIC RIDGELINE	10/15	SAM HOLSTAD	2	ICP/0700	ICP/2000	
O-1045 FMOD GOODSON LOGGING	10/18	NATHANIEL ZELLER	2	ICP/0700	ICP/2000	
E-547 ENG6 FIRST STRIKE	10/09	JUAN RENTERIA	3	ICP/0700	ICP/2000	
E-596 ENG3 TORRES CONTRACTING	10/20	CHAD CORWIN	3	ICP/0700	ICP/2000	
E-571 EXC3 MARK JONES TRUCKING	10/18	CHAD BROWN	2	ICP/0700	ICP/2000	
E-5077 SKD2 HOFBAUER	10/10	ALEX HOMER	2	ICP/0700	ICP/2000	
E-355 FEL1 DUKE	10/18	JUSTIN DARSTIN	2	ICP/0700	ICP/2000	
E-5358 FEL2 IDAHO WEST LLC	10/11	RUSS GRANT	2	ICP/0700	ICP/2000	
O-1013 REAF	10/14	CHRIS MARTIN	1	ICP/0700	ICP/2000	
O-1025 REAF	10/17	ADAM BUCHER	1	ICP/0700	ICP/2000	
8. Division/Group Communication Summary						
Function	Channel	RX Frequency N/W	RX Tone/NAC	TX Frequency N/W	TX Tone/NAC	Mode
COMMAND	1	170.0000 N	136.5	166.6750 N	136.5	A
TACTICAL	12	171.1125 N	136.5	171.1125 N	136.5	A
AIR TO GROUND	13	168.3375 N		168.3375 N		A
AIR TO GROUND	14	169.4625 N		169.4625 N		A
9. Prepared By (Resource Unit Leader)			Approved By (Planning Section Chief)		Date	Time
TERI PARVIN			JILL JOHNSON		10/08/2022	2000

Division/Group Assignment List (ICS 204 WF)
Controlled Unclassified Information//Basic

1. Incident Name:			3.			
CEDAR CREEK			Branch:		Division/Group	
2. Operational Period: DAY			WEST		Y	
Date/Time From: 10/09/2022 0700 SUN		Date/Time To: 10/09/2022 2000 SUN				
4. Operations Personnel						
FIELD OPERATIONS		AARON ROWE MIKE DAVIS (T)		BRANCH DIRECTOR		AARON ROWE HECTOR MEDRANO (T)
DIVISION/GROUP SUPERVISOR		BOB HINDS		AIR OPERATIONS BRANCH DIRECTOR		PAUL BALFOUR
SAFETY OFFICER		TROY CORN JACK CATES				
5. Resources Assigned this Period						
Strike Team / Task Force / Resource Designator		LWD	Leader	Number Persons	Drop Off PT./Time	Pick Up PT./Time
S-5428 REMS 12		10/13	MARCOS GARCIA	4	ICP/0700	ICP/2000
E-5405 AMBULANCE 7		10/18	ALVIN HORN	2	ICP/0700	ICP/2000
6. Control Operations/Work Assignments:						
<p>Task: Secure perimeter along FS road 2409. Purpose: To protect values at risk in the community of Oakridge and High Prairie. End State: Fire remains inside current containment lines.</p>						
7. Special Instructions:						
<ul style="list-style-type: none"> • Be IA ready. • Areas to be avoided are marked with either black/yellow or red dot on white flagging. • Consult Resource Advisors if you have any questions. • Backhaul all excess equipment. <p>For interior USFS 24 road system</p> <ul style="list-style-type: none"> • Limit the number of resources that are used to only what is necessary and remain in the area only as long as needed. • Fell immediate hazards, leave trees in place unless you must get them off the roadway. • Evaluate winds during site operations and shut down operations when 20-foot winds exceed 10 mph. • Shut down operations if participation of 1.5 inches in 24 hours over a 48-hour period occurs. • Utilized local hazard tree experts to properly evaluate trees that need to be felled. <p>The Division Frequencies are shown on the Communication Plan (ICS 205) in the IAP.</p>						
8. Division/Group Communication Summary						
Function	Channel	RX Frequency N/W	RX Tone/NAC	TX Frequency N/W	TX Tone/NAC	Mode
COMMAND	1	170.0000 N	136.5	166.6750 N	136.5	A
TACTICAL	12	171.1125 N	136.5	171.1125 N	136.5	A
AIR TO GROUND	13	168.3375 N		168.3375 N		A
AIR TO GROUND	14	169.4625 N		169.4625 N		A
9. Prepared By (Resource Unit Leader)			Approved By (Planning Section Chief)		Date	Time
TERI PARVIN			JILL JOHNSON		10/08/2022	2000

Division/Group Assignment List (ICS 204 WF)
Controlled Unclassified Information//Basic

1. Incident Name:				3.		
CEDAR CREEK				Branch:	Division/Group P	
2. Operational Period: DAY						
Date/Time From: 10/09/2022 0700 SUN		Date/Time To: 10/09/2022 2000 SUN				
4. Operations Personnel						
FIELD OPERATIONS		AARON ROWE MIKE DAVIS (T)		DIVISION/GROUP SUPERVISOR		JOE HARRIS
AIR OPERATIONS BRANCH DIRECTOR		PAUL BALFOUR		SAFETY OFFICER		TROY CORN JACK CATES
5. Resources Assigned this Period						
Strike Team / Task Force / Resource Designator		LWD	Leader	Number Persons	Drop Off PT./Time	Pick Up PT./Time
O-937 SOF2		10/09	ROB POYNER	1	JUNCTION CAMP/0700	JUNCTION CAMP/2000
O-5338 TFLD		10/13	ERIC BADER	1	JUNCTION CAMP/0700	JUNCTION CAMP/2000
O-5408 TFLD		10/13	PAUL MANCUSO	1	JUNCTION CAMP/0700	JUNCTION CAMP/2000
C-5037 CRW2 MR CONTRACTING CREW 1		10/11	TOMAS GUZMAN	20	JUNCTION CAMP/0700	JUNCTION CAMP/2000
C-5038 CRW2 TABLE ROCK FORESTRY		10/11	TOMAS GOMEZ	20	JUNCTION CAMP/0700	JUNCTION CAMP/2000
E-574 ENG6 OR-MAF 44		10/19	MITCHELL FORTE	4	JUNCTION CAMP/0700	JUNCTION CAMP/2000
E-5522 ENG6 RUE FOREST CONTRACTING		10/12	ANTHONY CUNIAL	3	JUNCTION CAMP/0700	JUNCTION CAMP/2000
E-5007 WTS2 PATRICK HUGHES TRUCKING		10/12	GARY HUGHES	1	JUNCTION CAMP/0700	JUNCTION CAMP/2000
E-5527 CHSL MILLER TIMBER		10/21	BRIAN TAYLOR	2	JUNCTION CAMP/0700	JUNCTION CAMP/2000
E-5529 EXC3 RUNDSELL		10/18	BRIAN SHAW	2	JUNCTION CAMP/0700	JUNCTION CAMP/2000
O-5125 READ		10/08	JASON WILCOX	1	JUNCTION CAMP/0700	JUNCTION CAMP/2000
O-5403 REAF		10/11	JEFF JACKSON	1	JUNCTION CAMP/0700	JUNCTION CAMP/2000
O-5412 REAF (T)		10/11	WESLEY BURTON	1	JUNCTION CAMP/0700	JUNCTION CAMP/2000
8. Division/Group Communication Summary						
Function	Channel	RX Frequency N/W	RX Tone/NAC	TX Frequency N/W	TX Tone/NAC	Mode
COMMAND	4	171.9000 N	136.5	165.9875 N	136.5	A
COMMAND	6	170.2625 N	136.5	165.8125 N	136.5	A
TACTICAL	12	171.1125 N	136.5	171.1125 N	136.5	A
AIR TO GROUND	13	168.3375 N		168.3375 N		A
AIR TO GROUND	14	169.4625 N		169.4625 N		A
9. Prepared By (Resource Unit Leader)			Approved By (Planning Section Chief)		Date	Time
TERI PARVIN			JILL JOHNSON		10/08/2022	2000

Division/Group Assignment List (ICS 204 WF)
Controlled Unclassified Information//Basic

1. Incident Name:			3.			
CEDAR CREEK			Branch:		Division/Group	
2. Operational Period: DAY			P			
Date/Time From: 10/09/2022 0700 SUN		Date/Time To: 10/09/2022 2000 SUN				
4. Operations Personnel						
FIELD OPERATIONS		AARON ROWE MIKE DAVIS (T)		DIVISION/GROUP SUPERVISOR		JOE HARRIS
AIR OPERATIONS BRANCH DIRECTOR		PAUL BALFOUR		SAFETY OFFICER		TROY CORN JACK CATES
5. Resources Assigned this Period						
Strike Team / Task Force / Resource Designator		LWD	Leader	Number Persons	Drop Off PT./Time	Pick Up PT./Time
S-449 MEDIC 7		10/16	FISHER / HAVER	2	JUNCTION CAMP/0700	JUNCTION CAMP/2000
S-5052 MEDIC 3		10/14	BRODZIK / JASPER	2	JUNCTION CAMP/0700	JUNCTION CAMP/2000
E-5465 AMBULANCE 9		10/18	SANDS / BENETT	2	JUNCTION CAMP/0700	JUNCTION CAMP/2000
6. Control Operations/Work Assignments:						
<p>Task: Conduct suppression repair and keep the fire north of the 4290 road.</p> <p>Purpose: Protect values at risk on the east side of Waldo Lake while minimizing additional resource damage.</p> <p>End State: Control lines are repaired to suppression repair standards while minimizing the threat of the fire to values at risk.</p>						
7. Special Instructions:						
<p>Waldo Lake should not be used as a water source.</p> <p>Continue Repair work:</p> <ul style="list-style-type: none"> • Repair handlines • Repair machine lines • Pull slash • Recon and scout if other repair work is needed <p>The Division Frequencies are shown on the Communication Plan (ICS 205) in the IAP.</p>						
8. Division/Group Communication Summary						
Function	Channel	RX Frequency N/W	RX Tone/NAC	TX Frequency N/W	TX Tone/NAC	Mode
COMMAND	4	171.9000 N	136.5	165.9875 N	136.5	A
COMMAND	6	170.2625 N	136.5	165.8125 N	136.5	A
TACTICAL	12	171.1125 N	136.5	171.1125 N	136.5	A
AIR TO GROUND	13	168.3375 N		168.3375 N		A
AIR TO GROUND	14	169.4625 N		169.4625 N		A
9. Prepared By (Resource Unit Leader)			Approved By (Planning Section Chief)		Date	Time
TERI PARVIN			JILL JOHNSON		10/08/2022	2000

Division/Group Assignment List (ICS 204 WF)
Controlled Unclassified Information//Basic

1. Incident Name:				3.		
CEDAR CREEK				Branch:	Division/Group R	
2. Operational Period: DAY						
Date/Time From: 10/09/2022 0700 SUN		Date/Time To: 10/09/2022 2000 SUN				
4. Operations Personnel						
FIELD OPERATIONS		AARON ROWE MIKE DAVIS (T)		DIVISION/GROUP SUPERVISOR		JEREMY KOLAKS
AIR OPERATIONS BRANCH DIRECTOR		PAUL BALFOUR		SAFETY OFFICER		TROY CORN JACK CATES
5. Resources Assigned this Period						
Strike Team / Task Force / Resource Designator		LWD	Leader	Number Persons	Drop Off PT./Time	Pick Up PT./Time
O-1055 SOF2		10/19	MITCH WILSON	1	JUNCTION CAMP/0700	JUNCTION CAMP/2000
O-963 TFLD		10/11	JEREMY D BRYANT	1	JUNCTION CAMP/0700	JUNCTION CAMP/2000
O-5407 TFLD		10/14	KADELL DEASON	1	JUNCTION CAMP/0700	JUNCTION CAMP/2000
O-5409 TFLD		10/13	JUSTEN JOHANSEN	1	JUNCTION CAMP/0700	JUNCTION CAMP/2000
O-5414 TFLD		10/14	KYLE THATCHER (T)	1	JUNCTION CAMP/0700	JUNCTION CAMP/2000
O-5398 HEQB		10/11	RODNEY KENYON (T)	1	JUNCTION CAMP/0700	JUNCTION CAMP/2000
O-5410 HEQB		10/14	SETH GREENE	1	JUNCTION CAMP/0700	JUNCTION CAMP/2000
C-5034 CRW2 PACIFIC OASIS 10		10/09	DONTE MARQUEZ	20	JUNCTION CAMP/0700	JUNCTION CAMP/2000
E-5230 WTS2 K & R CONTRACTING, LLC		10/22	JONATHAN MONROE	1	JUNCTION CAMP/0700	JUNCTION CAMP/2000
E-5231 WTS2 TABLE MOUNTAIN		10/26	TOM WHITING	1	JUNCTION CAMP/0700	JUNCTION CAMP/2000
E-5519 WTS2 CLAY'S FAB & REPAIR		10/12	CLAY ALVERNAZ	1	JUNCTION CAMP/0700	JUNCTION CAMP/2000
E-5520 WTS2 MILLER TIMBER		10/16	STEVE ROBERTSON	1	JUNCTION CAMP/0700	JUNCTION CAMP/2000
E-5078 SKD2 RIM ROCK		10/10	MATTHEW PAINTER	2	JUNCTION CAMP/0700	JUNCTION CAMP/2000
E-5079 SKD2 STATEWIDE CONTRACT		10/09	RYAN STEPP	1	JUNCTION CAMP/0700	JUNCTION CAMP/2000
8. Division/Group Communication Summary						
Function	Channel	RX Frequency N/W	RX Tone/NAC	TX Frequency N/W	TX Tone/NAC	Mode
COMMAND	3	171.0625 N	136.5	162.8125 N	136.5	A
COMMAND	6	170.2625 N	136.5	165.8125 N	136.5	A
TACTICAL	8	168.6000 N	136.5	168.6000 N	136.5	A
AIR TO GROUND	13	168.3375 N		168.3375 N		A
AIR TO GROUND	14	169.4625 N		169.4625 N		A
9. Prepared By (Resource Unit Leader)			Approved By (Planning Section Chief)		Date	Time
TERI PARVIN			JILL JOHNSON		10/08/2022	2000

Division/Group Assignment List (ICS 204 WF)
Controlled Unclassified Information//Basic

1. Incident Name:				3.		
CEDAR CREEK				Branch:	Division/Group R	
2. Operational Period: DAY						
Date/Time From: 10/09/2022 0700 SUN		Date/Time To: 10/09/2022 2000 SUN				
4. Operations Personnel						
FIELD OPERATIONS		AARON ROWE MIKE DAVIS (T)		DIVISION/GROUP SUPERVISOR		JEREMY KOLAKS
AIR OPERATIONS BRANCH DIRECTOR		PAUL BALFOUR		SAFETY OFFICER		TROY CORN JACK CATES
5. Resources Assigned this Period						
Strike Team / Task Force / Resource Designator		LWD	Leader	Number Persons	Drop Off PT./Time	Pick Up PT./Time
E-5376 GRD2 TABLE MOUNTAIN FORESTRY		10/12	FRANCIS READY	2	JUNCTION CAMP/0700	JUNCTION CAMP/2000
E-341 EXC2 HATFIELD TRUCKING		10/09	TROY WISBEY	2	JUNCTION CAMP/0700	JUNCTION CAMP/2000
E-5458 EXC2 SANTUCCI RANCH TURF LLC		10/25	BRAD SANTUCCI	2	JUNCTION CAMP/0700	JUNCTION CAMP/2000
E-5501 EXC2 OWENS FREIGHT		10/10	TYLER HARGIS	2	JUNCTION CAMP/0700	JUNCTION CAMP/2000
E-5502 EXC2 OWENS FREIGHT LINES		10/11	KEVIN DEHEART	2	JUNCTION CAMP/0700	JUNCTION CAMP/2000
E-5227 FORW CHILTON LOGGING		10/13	AUSTIN MILLER	2	JUNCTION CAMP/0700	JUNCTION CAMP/2000
E-552 VROL SCOTT MARSHALL		10/24	FRANK HAYES	2	JUNCTION CAMP/0700	JUNCTION CAMP/2000
E-5275 DUMP BAR SEVEN		10/11	STEPHEN FIELDS	1	JUNCTION CAMP/0700	JUNCTION CAMP/2000
E-5505 DUMP IDAHO WEST		10/11	CHARLES SHIELDS	1	JUNCTION CAMP/0700	JUNCTION CAMP/2000
E-5014 LOG BOB MURRAY LOGGING		10/11	DONOVAN JANSSEN	1	JUNCTION CAMP/0700	JUNCTION CAMP/2000
E-5098 LOG BOB MURRAY LOGGING		10/11	JESSE BASSETT	1	JUNCTION CAMP/0700	JUNCTION CAMP/2000
E-5100 LOG JSW LOGGING, LLC		10/16	LEVI HOLIDAY	1	JUNCTION CAMP/0700	JUNCTION CAMP/2000
E-5101 LOG JSW LOGGING, LLC		10/10	JAKE SHARROCK	1	JUNCTION CAMP/0700	JUNCTION CAMP/2000
E-5104 LOG JSW LOGGING, LLC		10/12	BRENT LEE	1	JUNCTION CAMP/0700	JUNCTION CAMP/2000
E-5508 LOGL MARK JONES TRUCKING		10/11	JAKE BROWN	2	JUNCTION CAMP/0700	JUNCTION CAMP/2000
8. Division/Group Communication Summary						
Function	Channel	RX Frequency N/W	RX Tone/NAC	TX Frequency N/W	TX Tone/NAC	Mode
COMMAND	3	171.0625 N	136.5	162.8125 N	136.5	A
COMMAND	6	170.2625 N	136.5	165.8125 N	136.5	A
TACTICAL	8	168.6000 N	136.5	168.6000 N	136.5	A
AIR TO GROUND	13	168.3375 N		168.3375 N		A
AIR TO GROUND	14	169.4625 N		169.4625 N		A
9. Prepared By (Resource Unit Leader)			Approved By (Planning Section Chief)		Date	Time
TERI PARVIN			JILL JOHNSON		10/08/2022	2000

Division/Group Assignment List (ICS 204 WF)
Controlled Unclassified Information//Basic

1. Incident Name:				3.			
CEDAR CREEK				Branch:		Division/Group	
2. Operational Period: DAY				R			
Date/Time From: 10/09/2022 0700 SUN		Date/Time To: 10/09/2022 2000 SUN					
4. Operations Personnel							
FIELD OPERATIONS		AARON ROWE MIKE DAVIS (T)		DIVISION/GROUP SUPERVISOR		JEREMY KOLAKS	
AIR OPERATIONS BRANCH DIRECTOR		PAUL BALFOUR		SAFETY OFFICER		TROY CORN JACK CATES	
5. Resources Assigned this Period							
Strike Team / Task Force / Resource Designator		LWD	Leader	Number Persons	Drop Off PT./Time	Pick Up PT./Time	
E-5509 LOGL MARK JONES TRUCKING		10/11	ROBERT SHEWEY	2	JUNCTION CAMP/0700	JUNCTION CAMP/2000	
E-5234 LOGL MILLER TIMBER		10/09	DUSTIN FORTADO	2	JUNCTION CAMP/0700	JUNCTION CAMP/2000	
E-5235 LOGL BRUCE YOUNG LOGGING		10/16	CALEB JOHNSON	2	JUNCTION CAMP/0700	JUNCTION CAMP/2000	
E-5237 LOGL J & D LOGGING & CON		10/18	SAWER LOGAN	2	JUNCTION CAMP/0700	JUNCTION CAMP/2000	
O-1059 REAF		10/18	JASON BERNARDS	1	JUNCTION CAMP/0700	JUNCTION CAMP/2000	
S-5049 MEDIC 1		10/12	CROWE / VANIS	2	JUNCTION CAMP/0700	JUNCTION CAMP/2000	
S-5051 MEDIC 2		10/20	LAPEARL / LAWLER	2	JUNCTION CAMP/0700	JUNCTION CAMP/2000	
E-5115 AMBULANCE 6		10/11	NEWMAN / MCDONNELL	2	JUNCTION CAMP/0700	JUNCTION CAMP/2000	
6. Control Operations/Work Assignments:							
<p>Task: Continue shaded fuel break on roads 4668, 4660, and HWY 46 to specifications developed by the local unit to ensure any fire stays west of these road systems.</p> <p>Purpose: Protect values at risk at Twin Lakes Lodge, Wickiup Reservoir, Davis Lake, and the community of Crescent.</p> <p>End State: Fire remains inside current containment lines.</p>							
7. Special Instructions:							
<ul style="list-style-type: none"> Waldo Lake should not be used as a water source. The Division Frequencies are shown on the Communication Plan (ICS 205) in the IAP. 							
8. Division/Group Communication Summary							
Function	Channel	RX Frequency N/W	RX Tone/NAC	TX Frequency N/W	TX Tone/NAC	Mode	
COMMAND	3	171.0625 N	136.5	162.8125 N	136.5	A	
COMMAND	6	170.2625 N	136.5	165.8125 N	136.5	A	
TACTICAL	8	168.6000 N	136.5	168.6000 N	136.5	A	
AIR TO GROUND	13	168.3375 N		168.3375 N		A	
AIR TO GROUND	14	169.4625 N		169.4625 N		A	
9. Prepared By (Resource Unit Leader)			Approved By (Planning Section Chief)			Date	Time
TERI PARVIN			JILL JOHNSON			10/08/2022	2000

Division/Group Assignment List (ICS 204 WF)
Controlled Unclassified Information//Basic

1. Incident Name:			3.			
CEDAR CREEK			Branch:		Division/Group	
2. Operational Period: DAY			POTTER-SWAMP			
Date/Time From: 10/09/2022 0700 SUN		Date/Time To: 10/09/2022 2000 SUN				
4. Operations Personnel						
FIELD OPERATIONS		AARON ROWE MIKE DAVIS (T)		DIVISION/GROUP SUPERVISOR		QUINLAN ANDERSON
AIR OPERATIONS BRANCH DIRECTOR		PAUL BALFOUR		SAFETY OFFICER		TROY CORN JACK CATES
5. Resources Assigned this Period						
Strike Team / Task Force / Resource Designator		LWD	Leader	Number Persons	Drop Off PT./Time	Pick Up PT./Time
HEQB (L/L)			JAIME MARISCAL	1	ICP/0700	ICP/2000
HEQB (T) (L/L)			ADAM VROON	1	ICP/0700	ICP/2000
C2IA WIL HAND CREW #501 (L/L)			JESUS SARAZ	16	ICP/0700	ICP/2000
E-561 EXC2 JERRY SWEARINGEN CONSTRUCTION		10/17	JERRY SWEARINGEN	2	ICP/0700	ICP/2000
E-582 EXC2 ROBERT MURRAY		10/21	CHARLOTTE KAME	1	ICP/0700	ICP/2000
E-563 DUMP LEE ROY BELLOIR & SONS		10/17	LEE ROY BELLOIR	1	ICP/0700	ICP/2000
E-564 DUMP RUSSELS MGNT SERVICES		10/19	WILLY AUSTIN	1	ICP/0700	ICP/2000
E-176 AMBU2		10/10	CHARLIE GEER	2	ICP/0700	ICP/2000
6. Control Operations/Work Assignments:						
Continue Repair work:						
<ul style="list-style-type: none"> • Repair handlines • Repair machine lines • Pull slash • Recon and scout if other repair work is needed 						
7. Special Instructions:						
The Division Frequencies are shown on the Communication Plan (ICS 205) in the IAP.						
8. Division/Group Communication Summary						
Function	Channel	RX Frequency N/W	RX Tone/NAC	TX Frequency N/W	TX Tone/NAC	Mode
COMMAND	5	170.0125 N	136.5	165.2500 N	136.5	A
COMMAND	7	170.4625 N	103.5	164.8250 N	103.5	A
TACTICAL	11	168.2500 N	136.5	168.2500 N	136.5	A
AIR TO GROUND	13	168.3375 N		168.3375 N		A
AIR TO GROUND	14	169.4625 N		169.4625 N		A
9. Prepared By (Resource Unit Leader)			Approved By (Planning Section Chief)		Date	Time
TERI PARVIN			JILL JOHNSON		10/08/2022	2000

Division/Group Assignment List (ICS 204 WF)
Controlled Unclassified Information//Basic

1. Incident Name:			3.			
CEDAR CREEK			Branch:		Division/Group	
2. Operational Period: DAY			STAGING			
Date/Time From: 10/09/2022 0700 SUN		Date/Time To: 10/09/2022 2000 SUN				
4. Operations Personnel						
FIELD OPERATIONS		AARON ROWE MIKE DAVIS (T)		DIVISION/GROUP SUPERVISOR		
AIR ATTACK SUPERVISOR		PAUL BALFOUR		SAFETY OFFICER		TROY CORN JACK CATES
5. Resources Assigned this Period						
Strike Team / Task Force / Resource Designator		LWD	Leader	Number Persons	Drop Off PT./Time	Pick Up PT./Time
E-5462 SMM1 BRINK BROTHERS INC.		10/19	MATT SAYLES	1	STAGING AREA/0700	STAGING AREA/2000
E-5238 SMM3 HACKER MACHINES		10/14	CHRIS HACKER	2	STAGING AREA/0700	STAGING AREA/2000
E-5371 CHP2 HI COUNTRY		10/15	JOHN CONGER	3	STAGING AREA/0700	STAGING AREA/2000
6. Control Operations/Work Assignments:						
Park in Staging area for next assignment or instructions.						
7. Special Instructions:						
The Division Frequencies are shown on the Communication Plan (ICS 205) in the IAP.						
8. Division/Group Communication Summary						
Function	Channel	RX Frequency N/W	RX Tone/NAC	TX Frequency N/W	TX Tone/NAC	Mode
COMMAND	2	170.6875 N	136.5	166.5750 N	136.5	A
TACTICAL	8	168.6000 N	136.5	168.6000 N	136.5	A
AIR TO GROUND	13	168.3375 N		168.3375 N		A
AIR TO GROUND	14	169.4625 N		169.4625 N		A
9. Prepared By (Resource Unit Leader)			Approved By (Planning Section Chief)		Date	Time
TERI PARVIN			JILL JOHNSON		10/08/2022	2000

Controlled Unclassified Information/Basic

AIR OPERATIONS SUMMARY CEDAR CREEK	Prepared By: Paul Balfour AOB	Prepared: 10/08/2022	Prepared Time: 1800 hrs.		
	2. OPERATIONAL PERIOD 10/09/2022	START TIME: 0700	END TIME: 1800	SUNRISE: 0716	SUNSET: 1837

<p>HIGH, SHIFTING, ERRATIC WINDS WILL AFFECT AIRCRAFT PERFORMANCE AND AVAILABILITY.</p> <p>TRACK WATER SOURCE USE ON COST SUMMARIES FOR EACH HELICOPTER.</p> <p>*LEND/LEASE TO NEW IA OUTSIDE THE DELEGATION *</p> <p>REQUEST FOR AERIAL DELIVERY OF LINE ORDERS THROUGH <u>COMMUNICATIONS</u>.</p> <p>REQUEST FOR AA OR HELICOPTERS THROUGH <u>HELIBASE ON COMMAND</u></p> <p>SCHEDULE FLIGHTS AT EARLIEST POSSIBLE TIME THROUGH 503-551-3973</p>	<p>4. MEDICAL A/C:</p> <p>Short Haul Helicopter Located in Sunriver</p> <p>Follow IWI protocols in case of an emergency.</p>	<p>TFR 2/2874 (A-164)</p> <p>Freq. 126.5250</p> <p>Ceiling 11,000 MSL</p> <p>0700-2400</p> <p>[Check FAA Website for Updates]</p>
--	---	---

6. PERSONNEL			7. FREQUENCIES			8. FIXED-WING Avail/ Type/ Make-Model/ N#/ Base							
AOBD	Paul Balfour	509-993-8739	A/A TFR		126.5250	ATGS Platforms: Available as needed from Pool							
ASGS	Albert Faria	907-419-5415	A/A (Fixed Wing) A-28		132.4750								
ASGS(t)	Dan Seborn	970-210-1798	A/A (Rotor Wing) A-53		120.0250								
ATGS (Pool)	Joe Cochran	541-699-2280				Airtankers: Order thru ATGS							
ATGS (Pool)	Danny Williams	406-853-5746	A/G West Primary A- 29		168.3375	UAS – UR-31 (A-171) Ed Yue 304-906-9065							
HEBM	Natalie Bench	928-358-0963	A/G West Secondary A-30		169.4625	Crescent Airport (5S2) Elevation 4819' 43 ° 31.967402N 121 ° 57.015535W AIS Hotsy at helibase for bucket/tank rinsing							
			A/G West Firing A-65		171.8375								
Oakridge Helibase		503-551-3973											
UAO Willamette	Justin Vernon	541-224-3627				Email addresses:							
						Finance: 2022.cedarcreek.finance@firenet.gov							
						Helibase: 2022.cedarcreek.helibase@gmail.com							
Oakridge Helibase	Primary Contact Number	503-551-3973	CTAF/UNICOM		122.9	OAKRIDGE AIRPORT: N°43 45.16 X W 122° 30.28 (1393')							
			DECK		163.100 (Tone) rx/tx 136.5								
FAA N#	TY	MAKE/ MODEL	BASE	START	AVAIL	REMARKS	FAA N#	TY	MAKE/ MODEL	BASE	START	AVAIL	REMARKS
N804PJ	1	UH-60	Oakridge	0700	0900	Bucket A-12	HT1048Y	1	S-61A	Sunriver	0700	0900	H20/On Loan A-190
N635CK	1	S-61	Oakridge	0700	0900	Bucket A-188	N350HQ	3	AS 350 B3	Sunriver	0700	0900	Short Haul
N611CK	1	S-61	Sunriver	0700	0900	Bucket A-187	N854H	3	Bell 407	Oakridge	0700	0900	PSD/PAX/H20 A-162
N805RA	1	K-MAX	Crescent	0700	0900	Bucket A-197	N171PL	1	K-MAX	Crescent	0700	0900	Bucket A-35

INCIDENT RADIO COMMUNICATIONS PLAN (ICS 205)

Controlled Unclassified Information//Basic

1. Incident Name:	2. Date/Time Prepared:	3. Operational Period: DAY	
CEDAR CREEK	Date: 10/08/2022 Time: 2000	Date/Time From: 10/09/2022 0700 SUN	Date/Time To: 10/10/2022 0700 MON

4. Basic Radio Channel Use:

Zone Group	Ch #	Function	Channel Name/Trunked Radio System Talkgroup	Assignment	RX Freq	RX Tone/NAC	TX Freq	TX Tone/NAC	Mode (A,D, or M)	Remarks
	1	COMMAND	CMD 1	NW AREA OF FIRE	170.0000 N	136.5	166.6750 N	136.5	A	LOCATED - HUCKLEBERRY MTN
	2	COMMAND	CMD 2	SOUTH AREA OF FIRE	170.6875 N	136.5	166.5750 N	136.5	A	LOCATED - WOLF MT
	3	COMMAND	CMD 3	SE AREA OF FIRE	171.0625 N	136.5	162.8125 N	136.5	A	LOCATED - THE TWINS
	4	COMMAND	CMD 4	NORTH AREA OF FIRE	171.9000 N	136.5	165.9875 N	136.5	A	LOCATED - NE OF BOX CANYON
	5	COMMAND	CMD 5	POTTER/BIG SWAMP	170.0125 N	136.5	165.2500 N	136.5	A	LOCATED - WARNER MTN
	6	COMMAND	CMD6	NE AREA OF FIRE	170.2625 N	136.5	165.8125 N	136.5	A	LOCATED - CULTUS MTN
	7	COMMAND	HUCKLEBERRY	WIF FOREST NET	170.4625 N	103.5	164.8250 N	103.5	A	POTTER/BIG SWAMP FIRES
	8	TACTICAL	TAC 8	DIV A/R AND STAGING	168.6000 N	136.5	168.6000 N	136.5	A	SHARED TACTICAL
	9	TACTICAL	TAC 9	DIV T	166.7250 N	136.5	166.7250 N	136.5	A	
	10	TACTICAL	TAC 10	DIV W	166.7750 N	136.5	166.7750 N	136.5	A	
	11	TACTICAL	TAC 11	DIV X / POTTER;BIG SWAMP	168.2500 N	136.5	168.2500 N	136.5	A	SHARED TACTICAL
	12	TACTICAL	TAC 12	DIV Y / P AND NIGHT	171.1125 N	136.5	171.1125 N	136.5	A	SHARED TACTICAL
	13	AIR TO GROUND	A/G PRI	AIR TO GROUND PRIMARY	168.3375 N		168.3375 N		A	AIR OPS PRIMARY
	14	AIR TO GROUND	A/G SEC	AIR TO GROUND SECONDARY	169.4625 N		169.4625 N		A	AIR OPS SECONDARY
	15	AIR TO GROUND	VMED 29	EMERGENCY USE	155.3475 N		155.3475 N	156.7	A	STATE INTEROP FOR MED FLIGHTS
	16	AIR GUARD	AIRGUARD	AIR GUARD	168.6250 N		168.6250 N	110.9	A	EMERGENCY AIR CONTACT

5. Special Instructions:

6. Prepared By (Communications Unit Leader)	Name: MISSY PARKER	Signature: <i>Missy Parker</i>
ICS 205	IAP Page	Date/Time: 10/08/2022 2000

DEMOB INSTRUCTIONS

Cedar Creek, Junction Camp, Big Swamp & Potter

AIR TRAVEL – All resources requiring air travel to their home unit must call DEMOB 72 hours in advance of departure date to make travel arrangements.

DEMOB LOCATIONS: All demobs will occur at the resource current locations (Oakridge Camp or Junction Camp). Please follow the steps in this order.

1. **IAP:** Refer to the Tentative Demob list for your assigned Demob date/time.
2. **WEED WASH:** All OFF-ROAD resources need to complete a weed wash before leaving. Weed wash is located at Kokanee Staging near Oakridge Camp and Pit Staging near Junction Camp.
3. **GROUND SUPPORT:** Equipment contractors need to pick up inspection forms at Ground Support. If damage or claims are reported an inspection may be performed. Ground Support will inform Demob when completed.
4. **COMMUNICATIONS AND SUPPLY:** Turn in all checked out items to the respective units. As items are returned, Demob will be notified.
5. **FINANCE:** Report to Finance and close out all final paperwork.
6. **DEMOB:** Once closed out in Finance, call Demob at 541-482-1331. If no answer, try again in a few minutes. If still no answer, then leave a message with the following information:
 - a. Your Resource Order Number
 - b. Name of Resource/Company
 - c. City/State you are traveling to
 - d. Estimate time of departure and arrival
 - i. Rest overnight (RON) location if applicable.

This is the last step before you start your travel.

Demob: 541-482-1331

2022.cedarcreek.demob@firenet.gov



Cedar Creek Fire - 2022

Tentative Demob List

**Assigned
Finance
Time**

10/9/2022 (Sunday)

0800	C-107	SRC - CAMP CREW #6	CRWC
0815	C-110	SRC - CAMP CREW #7	CRWC
0830	C-113	ZIG ZAG IHC	CRW1
0845	C-117	WIF SANTIAM RIVER	CR2I
0800	E-561	JERRY SWEARINGEN	EXC2
0815	E-5137	WOLFE TRUCK & EQUIPMENT	STMH
0830	E-5224	CHILTON LOGGING	LOGT
0830	E-5225	CHILTON LOGGING	LOGT
0845	E-5276	WESTERN HEAVY HAUL	DUMP
0900	E-5503	BOULDER RIDGE	LOGT
	O-479	NOSLER, KAILEE	EQTR
	O-830	GU, YIQIANG	EQTR
	O-884	HOTTLE, KATHY	PTRC
	O-920	LLOYD, RICHARD	SEC1
	O-921	WRIGHT, MATHEW W	SEC1
	O-922	HANSON, MICHELLE ZETTEL	PIOF
	O-939	IMDT - TEAM - INCIDENT -	FFT2
	O-958	WRIGHT, THOMAS RUSSELL	IMET
	O-996	DUNN, KEITH	OSC2
	O-5125	WILCOX, JASON	READ

AIR TRAVEL

Please contact DMOB 72 hours in advance of your scheduled departure date to make travel arrangements.

**Assigned
Finance
Time**

10/10/2022 (Monday)

0800	C-114	TJ FORESTRY CONTRACTING	CRW2
0815	C-115	WEST COAST REFORESTATION	CRW2
0830	C-116	GRAYBACK FORESTRY 17B	CRW1
0845	C-5034	PACIFIC OASIS 10	CRW2
0800	E-75	M&M RESOURCES	STK2
0800	E-383	ATLAS TREE SURGERY	CHSL
0815	E-487	ATLAS TREE SURGERY	CHSL
0830	E-547	FIRST STRIKE ENVIRONMENTAL	ENG6
0830	E-548	FIRST STRIKE ENVIRONMENTAL	ENG6
0845	E-5079	STATEWIDE CONTRACT	SKD2
0900	E-5234	MILLER TIMBER	LOGL
0915	E-5490	LADYBUG WORKS	HNDW
	O-888	LEONARD, VICKIE	COMT
	O-902	KATHRINER, CHRIS	SECG
	O-917.57	SIMLER, DOUGLAS	BCMG
	O-937	POYNER, ROB	SOF2
	O-941	MORRIS-TITUS, MARIAH RAE	INBA
	O-942	HOOPER, ELIZABETH	PIOT
	O-974	SHEPARD, ELIZABETH	ITSS
	O-5053	CISNEROS, GUADALUPE R	EQPM
	O-5057	TIMBER TIPPER	FMOD
	O-5257	CHAVEZ, DANIEL	HEQB
	O-5309	ADVENTURE MEDICS	EMPF
	O-5323	SUSCHA, LARA K	PIOF
	O-5376	MACIAS, MIGUEL	EQPM
	O-5378	ALLEN, SAMUEL R	GSUL
	O-5384	WESSELS, KRISTOFER	PIOT

10/11/2022 (Tuesday)

A-162	HE3S - N854H - B407	HE3S
C-5036	NW-MHF TLJC #4	CRWC
E-257	WILDERNESS MEDICS	AMB2
E-461	KING	HND1
E-5019	TJS CUTTING	FEL1
E-5077	HOFBAUER	SKD2
E-5078	RIM ROCK	SKD2
E-5100	JSW LOGGING, LLC	LOG
E-5101	JSW LOGGING, LLC	LOG
E-5180	PARAGON WATER TENDERS	HND1
E-5358	IDAHO WEST LLC	FEL2
E-5501	OWENS FREIGHT	EXC2
O-875	BOSWELL, GRADY	RADO
O-898	PRIEST, HEATHER	RADO
O-917.29	VAN NOSTRAND, HALA MAE	SEC2
O-917.45	MARSHALL, KRISTEN	SITL
O-917.46	LACEY, ANDREW	DMOB
O-927	FOX-HUMPHREYS	RADO
O-968	HOEFS, AIMEE	INCM
O-971	BAKER, JORDAN	ICPI
O-977	GRANT, NICHOLAS	REAF
O-5316.72	NEWBY, TWYLA MARIE	COMT
O-5382	MARTIN, NATHAN	BCMG

10/12/2022 (Wednesday)

C-5037	MR CONTRACTING CREW 1	CRW2
C-5038	TABLE ROCK FORESTRY	CRW2
E-12	ALLIED WATER SERVICE	GW2
E-15	PREMIER SERVICES & EQUIPMENT	HNDW
E-16	BUCKS SANITARY SERVICE	HNDW
E-70	HANNA, GLENN	PUP1
E-419	FINE	WTT2
E-5014	BOB MURRAY LOGGING	LOG
E-5058	DB JET ENTERPRISES	ENG6
E-5098	BOB MURRAY LOGGING	LOG
E-5115	EMERGENCY RESPONSE	AMB1
E-5275	BAR SEVEN	DUMP
E-5502	OWENS FREIGHT LINES	EXC2
E-5505	IDAHO WEST	DUMP
E-5508	MARK JONES TRUCKING	LOGL
E-5509	MARK JONES TRUCKING	LOGL
O-910	ESPARZA, RUDY	SECG
O-911	BARTLETT, MATTHEW	SECG
O-943	WOOD, CLAIRE LOUISE	EQTR
O-960	MCINTEER, JASON	REAF
O-963	BRYANT, JEREMY D	TFLD
O-978	LIGHTSEY, ARIEL	PIOF
O-5311	KOEHLER, BRANDON JAMES	HMGB
O-5383	LIPP, KELSEY ELIZABETH	BCMG
O-5389	COLBY, DARIN	FSC3
O-5391	HOGG, BARBARA JANE	PTRC
O-5397	OETKEN, BRANDON	DRIV
O-5398	KENYON, RODNEY	HEQB
O-5401	ALLEN, LACIE RENEE	SEC2
O-5403	JACKSON, JEFF	REAF
O-5412	BURTON, WESLEY	REAF
S-1334	ALS 35 - BLACKWOODS EMERGENCY RESOURCES	SMED

TRAINING MESSAGE

Training Specialist Check-in – If you have a position task book (PTB), please scan the QR code below to initiate the check-in process with the Incident Training Specialist. Please complete the form in its entirety. Upon completion, at your earliest convenience, email a copy of your qualification card and position task book cover (see below for email address).

For your convenience, an electronic ICS-225 or ICS-226, Evaluation Record, and other appropriate assignment documentation will be sent to you after you complete the check-in process.



[CEDAR CREEK TRAINEE CHECK IN](#)

Incident Assignment Requirements –

1. Ensure your trainer(s)/evaluator(s) has/have initialed completed tasks in your PTB,
2. Obtain an Incident Performance Rating,
3. Obtain an Evaluation Record,
4. If evaluator initialed #1 on your Evaluation Record, ensure he/she signs as final evaluator (located on the backside of your PTB cover page),
5. Email all documentation (including item #4), when appropriate,
6. Complete Exit Interview (form will be provided via email).

Training Specialist

Debra Packard, 559-623-2983

Email: debra_packard@firenet.gov

NOTE: If you previously checked in with the RIST training specialist assigned to this incident, you do not need to check in again. The RIST training specialist, JoAnne Ware, will continue working with you to close out your training assignment.



Human Resource Message



Cedar Creek, October 9, 2022

Hello Cedar Creek Fire Team! Your NW Team 12 Human Resource Specialists for the Cedar Creek Fire are:

**Susie Manezes – 602-571-9327 and
Debra Packard – 559-623-2983.**

Susie's office location is in Oakridge at the Incident Command Post (ICP) and Debra's office location is at the Junction Fire Camp. We are available to provide information, facilitate communications, help you deal with conflict and serve as contacts for all actions related to Civil Rights.



In celebration of the 41st Annual National Fallen Firefighters' Memorial Weekend, please take a moment today and pause in tribute to all firefighters who have died in the line of duty. Thank you all for your service. Stay safe.



LOGISTICS (Hours of Operation & Information)**OAKRIDGE BASE CAMP**

Kitchen/Meals	0530 - 0900 1730 - 2030	Breakfast Dinner
Showers	0530 - 1200 and 1400 - 2200	
Laundry	0500 - 1200 and 1700 - 2200	1.5 hour turn around

KOKANEE STAGING

Ground Support	0530 - 2100	
Mechanic	0600 - 2100	
Inspections	0530 - 2100	
Weed Wash	0700 - 2100	
Supply	0530 - 2100	Email to 2022.cedarcreek.supply@gmail.com
Ordering**	0600 - 2100	Email to 2022.cedarcreek.ordering@firenet.gov
Fuel	0600 - 1100 1300 - 1800 1830 - 2100	Please fill locally if you have capabilities **Note: Please don't mix any fuel until ready to use. If you do mix it, remember to label it with mix ratio.

JUNCTION CAMP

20111 Crescent Lake Hwy, Crescent OR 97733

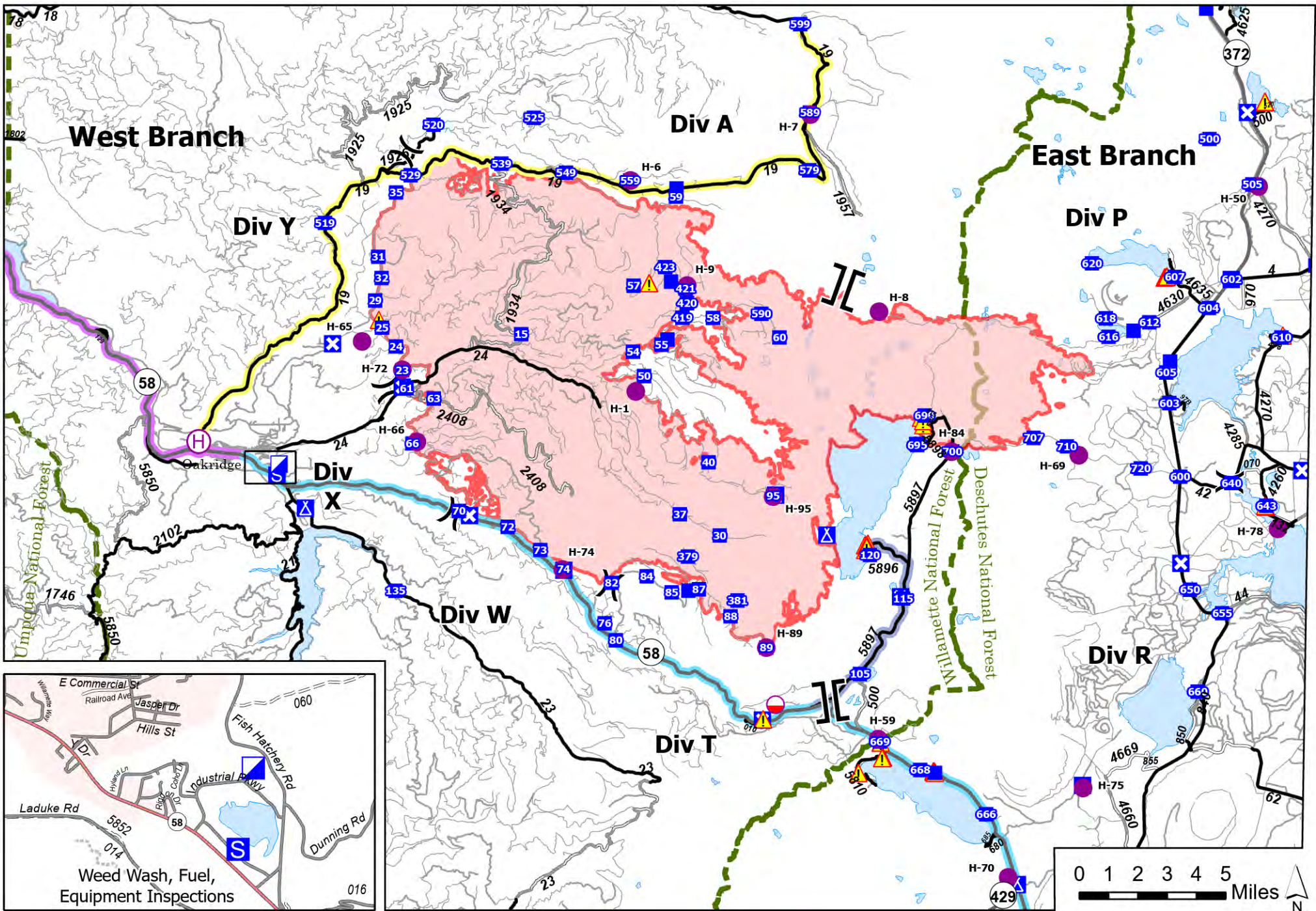
Kitchen/Meals	0530 - 0900, 1730 - 2030	Breakfast Dinner
Showers	0530 - 1200, 1400 - 2200	
Supply	0530 - 2100	

LAVA ODELL STAGING

Ground Support	0530 - 2100	
Fuel	0600 - 1100, 1300 - 1800 1830 - 2100	
Weed Wash	0700 - 2100	

Ordering Instructions:

1. You must give a date and time needed with a minimum of 48 hours in the future, you can add in the comments "Or sooner if possible".
2. You must your contact information on the 213.
3. Put both Ordering and Supply (in the "To" block) on your 213 so when it arrives at supply they know who to contact.



Transportation

Cedar Creek
OR-WIF-220180
10/08/2022 24 Hour

- | | | | | |
|-----------------------|-----------------------|--------------|------------------|--|
| Mobile Retardant Base | Branch Break | Camp | Paved Road | Oakridge to Crescent - 55 min. |
| Helispot | Incident Command Post | Staging Area | Gravel Road | Oakridge to DP 599 - 1 hr. 35 min. |
| Helibase | Drop Point | Hazard | Dirt Roads | Bristow State Park to Oakridge - 31 min. |
| Division Break | Closure | Highway | Unimproved Roads | OR-58 to DP 120 - 26 min. |



COVID-19 Mitigations for Cedar Creek Fire

- Masks are not required indoors unless working in a county with a HIGH COVID-19 community level. Currently, Lane County community level is LOW (masking indoors is optional).
- Conduct daily verbal screening checks within crews, report any COVID-like symptoms to your direct supervisor. Supervisors should report any positive symptoms to the Medical Unit for next steps.
- Observe social distancing standards while waiting in line for food and limit contact with others outside of your crew in the food service line. If possible, send crew representatives to pick up meals.
- Practice good personal hygiene, wash hands frequently and disinfect high-traffic areas on a regular basis.
- Limit close contact between firefighters and the public as much as possible to prevent exposure and spread.





EMERGENCY PLAN INCIDENT WITHIN AN INCIDENT

ON SCENE INCIDENT COMMANDER

In the event of an accident or medical incident of any size, your primary responsibility is to ENSURE that the victim(s) receive prompt and effective Triage, Treatment, Extrication and Transport.

- **ENSURE THE MEDICAL INCIDENT REPORT IN THE INCIDENT ACTION PLAN IS BEING USED AND FOLLOWED- *IF DETERMINED TO BE A GREEN, DO NOT DECLARE EMERGENCY TRAFFIC AND ONLY COMPLETE LINE 1-4 ON MIR*.**
- Conduct size-up of the incident nature of accident, number type of resources involved, latitude and longitude location (DD°MMM.MM format): notify incident communications center and supervisor, request assistance as needed.
- Order and coordinate medical and support response to the accident.
- Evaluate special needs (law enforcement, haz mat, etc.).
- Clear the command frequency if medical emergency, coordinate with incident communications and air attack for air medical transportation needs.
- Preserve and photograph the scene for accident investigation.
- Remain aware of surroundings and the status of the main incident (delegate personnel to monitor the main fire) to ensure safety of medical treatment personnel.
- Until relieved, supervise and manage all personnel involved at the incident scene.

MEDICAL PLAN (ICS 206 WF)

Incident/Project Name		1. Operational Period						
Cedar Creek-Potter/Big Swamp		10/9/2022 0700-0700						
2. Ambulance Services								
Name	Complete Address	Phone	Advanced Life Support (ALS)					
			Yes	No				
Oakridge Fire & EMS	47592 Hwy 58 Oakridge, OR	Command Dispatch 541-682-3978	X					
Eugene Springfield Fire Dept	403 Main St. Springfield, OR	Command 541-682-5899	X					
Sun River Fire & Rescue	57475 Abbott Dr Sunriver, OR	Command	X					
La Pine Fire & Rescue	51590 Huntington Rd La Pine, OR	Command	X					
3. Air Ambulance Services								
Name	Phone	Location						
Emergency Air Transport	Command Secondary 911	Varies based on Availability Use VMED 29 air to ground						
Short Haul	Command Secondary 911	Crescent, OR AS 350 N350HQ						
4. Hospitals								
Name Complete Address	Coordinate Standard Degrees Decimal Minutes DD° MM.MMM' N - Lat DD° MM.MMM' W - Long		Travel Time From ICP Air Gnd		Phone	Helipad Yes No		Level of Care Facility
	Lat:	44°04.881' N	15 mins	1 hr		541-222-6931	X	
Sacred Heart Medical Center 1255 Hilyard St Eugene, OR	Long:	123°01.588' W						
Legacy Emanuel 2801 N Gantenbien Portland, OR	Lat:	45°32.59' N	30 mins	3 hrs	503-413-2200	X		Level 1 Trauma Burn Center
St Charles Medical Center 2500 NE Neff Rd Bend, OR	Long:	122°40.16' W						
	Lat:	44°04.102' N	45 mins	1.45 hrs	541-706-7777	X		Level 2
	Long:	121°16.053' W						
5. Division Branch Group	Capability				Personnel			
Div. A					Ambo 1 (E-99) ALS 34 (S-1333)			
Div. T					Ambo 3 (E-257) ALS 35 (S-1334) BLS 55 (O-987)			
Div. W					REMS 1 (S-279)			
Div. X					RAT 2 -ALS – UTV (S-1127)			
Div. Y					Ambo 7 (E-5405) REMS 12 (S-5428)			
Div. P					Ambo 9 (E-5465) Medic 3 (S-5052) Medic 7 (S-449)			

MEDICAL PLAN (ICS 206 WF)

Div. R	Ambo 6 (E-5115) Medic 1 (S-5049) Medic 2 (S-5051)		
Night Shift	Command/911		
Junction Spike	Lee Venning MEDL Mariann Turley MEDLt		
Potter/Big Swamp	Ambo 2 (E-176)		
Oakridge Camp	(N) John Nokes – MEDL & Necole Ontko – MEDLt, (D) Diana Braun MEDL		
Oakridge Heli-Base	ALS 29 Noah Metzler – EMPF		
6. Prepared By (Medical Unit Leader)	7. Date/Time	8. Reviewed By (Safety Officer)	9. Date/Time
Diana Braun	10/08/2022 1800	Jack Cates <i>Jack Cates</i>	10/08/2022 1800

Short-Haul Operations

CAPABILITIES

- During an operational Short-Haul the helicopter is capable of inserting Short-Haulers into an area with tight canopy cover and/or technical terrain.
- Haul line lengths range from 100 feet to 350 feet.
- Short hauler and/or medical gear can be delivered to the medical scene even if extraction by short-haul is not necessary.

ORDERING

- EMT or Medical Incident IC determines medical extraction is required.
- Follow local established procedures and/or Medical Incident Report (MIR) in the IRPG.
- Confirm aircraft type, call sign, estimated time of arrival and frequency.
- Give site selection information when ordering: hazards (i.e. ash, smoke, snags, aerial), tree height, terrain, and patient transport configuration (supine or seated position). Repeat hazards and give updated weather conditions as well as brief patient update to responding helicopter.

PROCESS: The helicopter will fly to the coordinates provided. They will make contact with ground personnel on scene with the patient using an identified air-to-ground frequency. The helicopter will complete a short-haul recon and size up, gather patient update information and then fly to a landing zone (LZ) to configure for short-haul operations. The helicopter will be monitoring the appropriate air-to-ground, air guard and victor frequencies. From this point, ground resources should only contact the helicopter in case of an emergency. During the insertion and extraction process ground personnel must be clear of the area.

ON SCENE: EXPECT THE FOLLOWING

- 1 or 2 rescuers (at least one qualified as an EMT or higher)
- Backboard (if needed and not already on scene)
- All equipment necessary for patient extraction

The Patient Extraction Bag accommodates most backboards.
-A patient on a backboard, TRS, SKED or litter will be inserted into the bag.



The Seat Harness is used for patients not requiring the use of a backboard.



IAP INSERT

MEDICAL PLAN (ICS 206 WF)

Controlled Unclassified Information//Basic

Medical Incident Report

FOR A NON-EMERGENCY INCIDENT, WORK THROUGH CHAIN OF COMMAND TO REPORT AND TRANSPORT INJURED PERSONNEL AS NECESSARY.

FOR A MEDICAL EMERGENCY: IDENTIFY ON SCENE INCIDENT COMMANDER BY NAME AND POSITION AND ANNOUNCE "MEDICAL EMERGENCY" TO INITIATE RESPONSE FROM IMT COMMUNICATIONS/DISPATCH.

Use the following items to communicate situation to communications/dispatch.

1. CONTACT COMMUNICATIONS / DISPATCH (**Verify correct frequency prior to starting report**)

Ex: "Communications, Div. Alpha. Stand-by for Emergency Traffic."

2. INCIDENT STATUS: *Provide incident summary (including number of patients) and command structure.*

Ex: "Communications, I have a Red priority patient, unconscious, struck by a falling tree. Requesting air ambulance to Forest Road 1 at (Lat./Long.) This will be the Trout Meadow Medical, IC is TFLD Jones. EMT Smith is providing medical care."

Severity of Emergency / Transport Priority	<input type="checkbox"/> RED / PRIORITY 1 Life or limb threatening injury or illness. Evacuation need is IMMEDIATE <i>Ex: Unconscious, difficulty breathing, bleeding severely, 2° – 3° burns more than 4 palm sizes, heat stroke, disoriented.</i> <input type="checkbox"/> YELLOW / PRIORITY 2 Serious Injury or illness. Evacuation may be DELAYED if necessary. <i>Ex: Significant trauma, unable to walk, 2° – 3° burns not more than 1-3 palm sizes.</i> <input type="checkbox"/> GREEN / PRIORITY 3 Minor Injury or illness. Non-Emergency transport <i>Ex: Sprains, strains, minor heat-related illness.</i>	
Nature of Injury or Illness & Mechanism of Injury		<i>Brief Summary of Injury or Illness (Ex: Unconscious, Struck by Falling Tree)</i>
Transport Request		<i>Air Ambulance / Short Haul/Hoist Ground Ambulance / Other</i>
Patient Location		<i>Descriptive Location & Lat. / Long. (WGS84)</i>
Incident Name		<i>Geographic Name + "Medical" (Ex: Trout Meadow Medical)</i>
On-Scene Incident Commander		<i>Name of on-scene IC of Incident within an Incident (Ex: TFLD Jones)</i>
Patient Care		<i>Name of Care Provider (Ex: EMT Smith)</i>

3. INITIAL PATIENT ASSESSMENT: *Complete this section for each patient as applicable (start with the most severe patient)*

Patient Assessment: See IRPG page 106

Treatment:

4. TRANSPORT PLAN:

Evacuation Location (if different): *(Descriptive Location (drop point, intersection, etc.) or Lat. / Long.)* Patient's ETA to Evacuation Location:

Helispot / Extraction Site Size and Hazards:

5. ADDITIONAL RESOURCES / EQUIPMENT NEEDS:

Example: Paramedic/EMT, Crews, Immobilization Devices, AED, Oxygen, Trauma Bag, IV/Fluid(s), Splints, Rope rescue, Wheeled litter, HAZMAT, Extrication

6. COMMUNICATIONS: Identify State Air/Ground EMS Frequencies and Hospital Contacts as applicable

Function	Channel Name/Number	Receive (RX)	Tone/NAC *	Transmit (TX)	Tone/NAC *
COMMAND					
AIR-TO-GRND					
TACTICAL					

7. CONTINGENCY: **Considerations:** *If primary options fail, what actions can be implemented in conjunction with primary evacuation method? Be thinking ahead.*

8. ADDITIONAL INFORMATION: *Updates/Changes, etc.*

REMEMBER: Confirm ETA's of resources ordered. Act according to your level of training. Be Alert. Keep Calm. Think Clearly. Act Decisively.

Controlled Unclassified Information//Basic