

# INCIDENT ACTION PLAN

# CEDAR CREEK

# POTTER & BIG SWAMP



SCAN QR CODE

For  
BRIEFING LINK  
DOWNLOAD IAP  
DOWNLOAD MAPS  
Send in PHOTOS  
CHECK-IN  
Submit TIME to FINANCE

Operational Period

October 10-11, 2022

Dayshift - 0700 to 2000

Nightshift - 1730 to 0700



*Cedar Creek - OR-WIF-220180 – P6PYP6 (0618)*

*Cedar Creek – WA DNR – 221-IWA*

*Potter – OR-WIF-220170 – P6PX6A (0618)*

*Big Swamp – OR-WIF-220189 – P6PY6M (0618)*

This page intentionally left blank.



## INCIDENT OBJECTIVES (ICS 202)

<b>1. Incident Name:</b>	<b>2. Operational Period: DAY</b>	
CEDAR CREEK	Date/Time From: 10/10/2022 0700      MON	Date/Time To: 10/11/2022 0700      TUE
<b>3. Objective(s):</b>		
<p>Provide for firefighter and public safety; specifically manage risk to firefighters by ensuring hazards are identified, assessed and where possible mitigated. Be prepared to accept residual risk when exposure is commensurate with values threatened and the probability of achieving objectives is high.</p> <p>Implement operational plans to keep fire within established primary control lines to protect identified values at risk including:</p> <ul style="list-style-type: none"> <li>• Oakridge, Westfir, and High Prairie,</li> <li>• Highway 58 and Forest Road 19,</li> <li>• Union Pacific railroad corridor and</li> <li>• Waldo Lake and associated recreational investments</li> <li>• Private infrastructure and recreational investments within surrounding Cascade Lakes Highway.</li> <li>• Willamette Pass Ski-Area; Private infrastructure, and Forest Recreational Investments.</li> </ul> <p>Promote coordination and partnership by developing clear dialogue and providing timely information between the IMT, affected agencies, and the public. Engage in effective communication with Agency Administrators and cooperators.</p> <p>Coordinate with Resource Advisors to complete fire suppression and approved repair work to protect natural and cultural values.</p>		
<b>4. Operational Period Command Emphasis:</b>		
Be prepared for receptive fuel conditions and active fire behavior throughout the entire burn period.		
<b>General Situational Awareness:</b>		
<b>5. Site Safety Plan Required?</b> Yes <input checked="" type="checkbox"/> No <input type="checkbox"/>		
<b>Approved Site Safety Plan(s) Located</b> ICP		
<b>6. Incident Action Plan</b> (the items checked below are included in this Incident Action Plan):		
<input checked="" type="checkbox"/> ICS 202 <input checked="" type="checkbox"/> ICS 203 <input checked="" type="checkbox"/> ICS 204 <input checked="" type="checkbox"/> ICS 205 <input type="checkbox"/> ICS 205A <input checked="" type="checkbox"/> ICS 206	<input checked="" type="checkbox"/> ICS 207 <input type="checkbox"/> ICS 208 <input checked="" type="checkbox"/> ICS 220 <input checked="" type="checkbox"/> Map/Chart <input checked="" type="checkbox"/> Weather Forecast/Tides/Currents	<b>Other Attachments:</b> <input checked="" type="checkbox"/> FIRE BEHAVIOR, SAFETY MESSAGE <input checked="" type="checkbox"/> HR MESSAGE, FINANCE <input checked="" type="checkbox"/> LOGISTICS INFO, PHONE LISTS <input checked="" type="checkbox"/> UNIT LOG, CHECK-IN / DEMOB
<b>7. Prepared by:</b> JILL JOHNSON	<b>Position/Title:</b> PSC2	<b>Signature:</b> <i>Jill Johnson</i>
<b>8. Approved by Incident Commander:</b>	<b>Name:</b> BOB SHINDELAR	<b>Signature:</b> <i>Bob Shindelar</i>
<b>ICS 202</b>	<b>IAP Page</b>	<b>Date/Time:</b> 10/09/2022 2000

## ORGANIZATION ASSIGNMENT LIST (ICS 203)

<b>1. Incident Name:</b>		<b>2. Operational Period: DAY</b>	
CEDAR CREEK		Date/Time From: 10/10/2022 0700 MON	Date/Time To: 10/11/2022 0700 TUE
<b>3. Incident Commander(s) and Command Staff:</b>		<b>CHIEF</b> KAREN ZIRKLE (T)	
IC/UC	BOB SHINDELAR	<b>DEPUTY</b>	RANDY SPIERING (JUNCTION CAMP)
<b>DEPUTY</b>		<b>SUPPLY UNIT</b>	JOHN KAUPA
<b>SAFETY OFFICER</b>	JACK CATES TROY CORN	<b>FACILITIES UNIT</b>	TOM BOYD WHIT SPENCER
<b>INFORMATION OFFICER</b>	JOEL BRUMM LIV STECKER	<b>GROUND SUPPORT UNIT</b>	DAVE HARSH (ICP) JON KAUTT (JUNCTION CAMP)
<b>LIAISON OFFICER</b>	SCOTT CRAWFORD JEFF SEVIGNEY	<b>MEDICAL UNIT</b>	DIANA BRAUN (ICP) LEE VENNING (JUNCTION CAMP)
<b>HUMAN RESOURCES</b>	SUSIE MANEZES DEBRA PACKARD	<b>COMMUNICATIONS UNIT</b>	MISSY PARKER
		<b>FOOD UNIT</b>	LAURA MILLER
		<b>SECURITY UNIT</b>	KEIRSTEN FORBEY (ICP) RICK SHUE (JUNCTION CAMP)
<b>4. Agency/Organization Representative(s):</b>			
<b>Agency/Organization</b>	<b>Name</b>		
WILAMETTE NF - AA	DARREN CROSS	<b>7. Operations Section:</b>	
DESCHUTES NF - AREP	ROBERT GENTRY	<b>FIELD OPS</b>	AARON ROWE MIKE DAVIS (T)
MIDDLE FORK DIST RANGER	MOLLY JUILLERANT	<b>PLANNING OPS</b>	TONY ENGEL TOMMY MENTZER (T)
MIDDLE FORK DIST FMO	JIMMER HUNT	<b>Branch</b>	<b>WEST</b>
WILLAMETTE NF - FOREST SUP	DUANE BISHOP	<b>BRANCH DIRECTOR</b>	AARON ROWE HECTOR MEDRANO (T)
LEAD READ	KAILEY GUERRANT	<b>DIVISION/GROUP</b> A	ISAIAH SALSKY
<b>5. Planning Section:</b>		<b>DIVISION/GROUP</b> T	SAM STEINSHOUER
<b>CHIEF</b>	JILL JOHNSON	<b>DIVISION/GROUP</b> W	BOB HINDS
<b>DEPUTY</b>	HOWARD JOHNSON (VIRTUAL)	<b>DIVISION/GROUP</b> X	DENNIS MAWHINNEY
<b>RESOURCES UNIT</b>	MARGE HUTCHINSON TERI PARVIN	<b>DIVISION/GROUP</b> Y	PHIL GRAHAM
<b>SITUATION UNIT</b>	KRISTEN MARSHALL SCOTT BLISS	<b>DIVISION/GROUP</b> P	JOE HARRIS
<b>DOCUMENTATION UNIT</b>	DEIDRE SMITH (VIRTUAL) LT PRATT (RIST)	<b>DIVISION/GROUP</b> R	JEREMY KOLAKS
<b>DEMOBILIZATION UNIT</b>	MIKE HESTON	<b>DIVISION/GROUP</b> POTTER/BIG SWAMP	QUINLAN ANDERSON
<b>FIRE BEHAVIOR ANALYST</b>	DON STRAND	<b>DIVISION/GROUP</b> NIGHT	MICHAEL SCHINSTOCK
<b>TRAINING SPECIALIST</b>	DEBRA PACKARD JOANNE WARE (RIST)	<b>7b. Air Operations Branch:</b>	
<b>GIS SPECIALIST</b>	SHAWN BUSHNELL MIKE TONKEL	<b>AIR OPS BRANCH DIRECTOR</b>	PAUL BALFOUR
<b>IT SPECIALIST</b>	GEORGE JENKINS CHARLENE JUMPER	<b>AIR SUPPORT SUPERVISOR</b>	ALBERT FARIA
<b>INCIDENT METEOROLOGIST</b>	BOB TOBIN	<b>8. Finance/Administration Section:</b>	
		<b>CHIEF</b>	CHERI FULLER
		<b>DEPUTY</b>	CHRISTINA GOEBEL
		<b>TIME UNIT</b>	STEVE CROW
		<b>PROCUREMENT UNIT</b>	MARK BOHNET
		<b>COST UNIT</b>	KAY HIGH (VIRTUAL)
		<b>ICPI</b>	ROB HECHINGER
<b>6. Logistics Section:</b>			
<b>CHIEF</b>	KEVIN HAUGHTON		
<b>9. Prepared By:</b>	<b>Name:</b> JILL JOHNSON	<b>Position/Title:</b> PSC	<b>Signature:</b> 
<b>ICS 203</b>	<b>IAP Page</b>	<b>Date/Time:</b> 10/09/2022 2000	

# FIRE WEATHER FORECAST

<b>FORECAST NO:</b>	66	<b>NAME OF FIRE:</b>	Cedar Creek
<b>PREDICTION FOR:</b>	Monday, Oct 10, 2022	<b>UNIT:</b>	OR-WIF-220180
<b>ISSUED:</b>	1900 PDT, Oct 09, 2022	<b>Incident Meteorologist:</b>	Bob Tobin

### \*\*\* NEAR CRITICAL WEATHER CONDITIONS THROUGH THE WEEK \*\*\*

**DISCUSSION:** A weakening cold front will move through the region Monday afternoon. This will result in much cooler temperatures and increased northwest winds. Cooler temperatures and higher relative humidity will linger into Tuesday as high pressure rebounds over the Pac NW. Offshore flow will then develop over the region. This will result in warming temperatures, low relative humidity and poor overnight recoveries through Saturday.

#### MONDAY: DRY COLD FRONT PASSAGE THIS AFTERNOON

<b>WEATHER:</b>	Smoke and haze early, then increasing clouds in the afternoon.	<b>MAX TEMPS:</b>	West: 65-75 East: 62-72
<b>WIND (EYE LEVEL, MPH):</b>	<b>Sheltered areas:</b> VRB 2-5 mph through 1200, then NW 5-10 mph. <b>Ridges, unsheltered areas, wind-aligned drainages:</b> VRB 5-10 mph...then NW 10-12 gusts 15-20 mph. <b>East of the Crest:</b> VRB 5-10 becoming NW-N 10-15 gusts 20mph.	<b>MIN RH:</b>	West: 25-35% East: 25-35%
<b>HAINES (HIGH LEVEL):</b>	4(Stability 2, moisture 2)	<b>CWR:</b>	0%
<b>PEAK MIXING HEIGHT/WIND:</b>	4,000 ft AGL/NW 10-15 mph	<b>Rain Amount:</b>	0.00
<b>INVERSION:</b>	Strong, midslope, mixing out after 1200	<b>LAL:</b>	1

#### MONDAY NIGHT: MODERATE RECOVERIES ON RIDGES...GOOD RECOVERIES VALLEY BOTTOMS

<b>WEATHER:</b>	Partly to mostly cloudy, smoke and fog.	<b>CWR:</b>	0%
<b>WIND (EYE LEVEL, MPH):</b>	<b>Sheltered areas, mid-slopes, and valley bottoms:</b> Becoming drainage 3-6. <b>Ridges:</b> NW 10-15 mph becoming VRB 5-10 mph. East Side: NW 5-15 mph.	<b>Rain Amount:</b>	0.00
<b>MIN TEMPS:</b>	<b>Ridges:</b> 45-50, <b>Midslope and below:</b> 45-50, <b>East:</b> 40-50.		
<b>MAX RH:</b>	<b>Ridges to mid-slope:</b> 70-80%, <b>Mid-slope and below:</b> 80-90%, <b>East of the crest:</b> 75-85%		
<b>INVERSION:</b>	Moderate developing mid-slope after 2000.		

#### TUESDAY:

<b>WEATHER:</b>	Partly to Mostly cloudy, morning fog. Afternoon clearing.	<b>MAX TEMPS:</b>	West: 62-72 East: 60-70
<b>WIND (EYE LEVEL, MPH):</b>	<b>Sheltered areas:</b> VRB 2-5 mph through 1000, then NW 5-10. <b>Ridges, unsheltered areas, wind-aligned drainages:</b> VRB 5-10 mph becoming E-SE 5-10 mph. <b>East of the Crest:</b> E-SE 5-10 mph.	<b>MIN RH:</b>	West: 30-40% East: 25-35%
<b>HAINES (HIGH LEVEL):</b>	4 (Stability 2, moisture 2)	<b>CWR:</b>	0%
<b>PEAK MIXING HEIGHT/WIND:</b>	3,500 ft AGL/N-NW 5-15 mph	<b>Rain Amount:</b>	0.00
<b>INVERSION:</b>	Weak-Moderate, midslope, mixing out after 1200	<b>LAL:</b>	1

#### EXTENDED OUTLOOK:

<b>WEDNESDAY:</b>	Mostly sunny. Highs upper 60s to mid 70s...Min RH 20-30%...E-S general winds 8-12 gust 15 mph.
<b>THURSDAY:</b>	Sunny and warmer. Poor RH recoveries. Highs mid 70s to lower 80s...Min RH 20-30%...E-SE winds 8-12 gust 20 mph...Becoming W-NW 5-10 mph after 1300..
<b>FRIDAY:</b>	Sunny and warm. Highs mid-60s to mid-70s...Min RH 25-35%...E-SE winds early becoming NW 5-10 mph with gusts up to 15 mph after 1400.

## FIRE BEHAVIOR FORECAST

<b>FORECAST NUMBER:</b> 66	<b>TYPE OF FIRE:</b> Wildland Fire
<b>FIRE NAME:</b> Cedar Creek	<b>OPERATIONAL PERIOD:</b> 10/10-11/2022, 0700-0700
<b>DATE ISSUED:</b> 10/9/2022	<b>TIME ISSUED:</b> 1900
<b>UNIT:</b> USFS-OR-WIF	<b>SIGNED:</b> Don Strand, FBAN

### INPUTS

**WEATHER SUMMARY:** Dry Cold Front Passage this afternoon. Partly cloudy- Temp 75° Relative Humidity 25% (east) -25% (west) 5000 ft Wind s afternoon NW 10 to 15 mph with gusts to 20 mph. Haines 4 stable)  
**\*\*\*See Weather Forecast for detailed information\*\*\***

### Fire Behavior Summary

**GENERAL:** Primary fuel types are TL5 and TU5. **TL5** is compact short needle conifer litter, found primarily in 2nd growth Douglas fir plantations. **TU5** is timber overstory with very high surface fuel load- short needle conifer with heavy brush and down log fuel loading in mature or old growth stands. Lichen is present across the landscape and spots readily. Timber stands with needle litter (**TL3**), dominated by Fir, Hemlock, or Lodgepole Pine. **TL8** is timber stands with needle litter dominated by Ponderosa Pine.

Fuel Type- Branch	Head ROS	Head FL	Spot Distance with gusts
Timber litter (TL5)	Up to 7 ch/hr. West	Up to 3 feet	Up to 0.5 mile
Timber understory (TU5)	Up to 7 ch/hr. Both	Up to 7 feet	Up to 0.5-mile
Timber litter, short needle (TL3)	Up to 2 ch/hr. East	Up to 2 feet	Up to 0.5 mile
Timber litter, long needle (TL8)	Up to 7 ch/hr. East	Up to 4 feet	Up to 0.5 mile

Dry Cold Front passage this afternoon. A little cooler with slightly higher humidity. Live and dead fuels remain dry and available to carry fire. 1-hr and 10-hr dead fuels will see slight increase in moisture content. Continued fire spread in heavy surface fuels with torching and spotting. Expect islands of unburned fuel to burn with moderate intensity. Smoldering, backing, and group torching is expected. Potential for short upslope runs exists. Where active fire has wind/slope alignment, expect greater fire intensity with increased group torching and short runs.

**Haines:** 4      **LAL:** 1      **POI:** 60-70%:      **FDFM:** 5-8%,  
**Local Thresholds for increased fire behavior on West side:** 20' Wind Speed over 10 MPH, RH less than 25% , Temperature above 85 degrees, 10-hr fuel moisture less than 4%

### Today's Fire Behavior

**DIV A, Y:** Pockets of unburned fuels will continue to consume, especially in Div. A at both ends of the division. Expect mostly smoldering and creeping and isolated torching due to heavy fuels under sheltered canopy.

**DIV W, X:** Unburned islands of fuels above 4000' will continue spread today in areas with available fuels with single tree torching and potential for short uphill runs. Expect smoldering in compact needle litter especially in riparian areas.

**DIV T:** Fuels are dry and receptive to spotting. Moderate rates of spread are expected. Surface fire spread in heavy fuels with single and group torching. Potential for short upslope runs exists. Potential for spotting from rolling material in areas with steeper slopes. With NW wind, smoke drift may impact fire activity.

**DIV R and P:** Smoldering and creeping with isolated torching in lichen ladder fuels, especially on south aspects with slope. With NW wind, smoke drift may impact fire activity.

**AIR OPERATIONS:** Aviation will be impacted by limited visibility due to smoke and morning inversion until 1400. With afternoon NW winds, eastern portions of the fire may have limited visibility.

### SAFETY

**In areas with steeper slopes, potential for spotting from burning rolling debris exists.**

**Increased wind gusts with dry cold front, fire weakened green trees and snags are overhead risks.**



## SAFETY MESSAGE

10-11 October 2022

INCIDENT: CEDAR CREEK

OPERATIONAL PERIOD: 0700-0700

### TOPICS:



#### **HIGHWAY 58**

Driving may be one of most taken for granted activities we engage in. Traffic accidents are rapidly becoming one of top causes for firefighter injuries and fatalities. Obey the speed limit, anticipate vehicles on blind curves, maintain a following distance and lane positioning to maximize your reaction time.

#### **FIRE BEHAVIOR AND DISENGAGEMENT**

Winds may be on the increase later this afternoon. Establish MAP for disengagement to provide for an orderly retreat given lack of safety zones. Have a plan for disengagement that establishes a designated meeting point and maintains personnel accountability.

#### **EXTRACTION METHODS/OPTIONS**

Review extraction routes and methods. Identify equipment on hand and needed to facilitate extraction over rough terrain. Recognize precautions that need to be taken for different types of injuries. Review your options for transport while keeping the "Golden Hour" as your objective. Close the window between triage and arrival at definitive care.

*Don't ever create a plan that is so complex that you can't explain it to those that have to carry it out.*

SAFETY OFFICER: Troy Corn, Jack Cates

# Deliberate Risk Assessment-Hazard Summary

10-11 OCT 2022

Hazard	Mitigation	Post Risk
Extraction Time	Identify medivac sites and helispots. Initiate ground transport to accident site for transport capability. Identify EMT/EMTP from resources assigned to division. Provide line qualified paramedics to each division as available. Review IWI protocol to ensure familiarity. Utilize agency and civilian medivac as treatment/timing dictates. Evaluate on-going need for repositioning medical personnel. Provide Dust abatement on Helispots as needed.	HIGH
Aircraft	Utilize Air Attack. Ensure all resources are a safe distance from all bucket and retardant drops. Establish LCES. Utilize air to ground primary for fixed wing, air to ground 2 for bucket work as needed. Reference IRPG (Safe aircraft operations pg. 61-62). Ensure IA resources have coordination with unassigned local air resources to provide deconfliction.	HIGH
Hazard Trees	Use avoidance to limit exposure time. Fall ahead to avoid exposure. Use qualified fallers or alternate methods if needed. Conduct on- going risk analysis of all work areas. Follow Hazard Tree Safety Guidelines (IRPG page 20-21).	HIGH
Heavy Equipment	Post lookouts around equipment work areas. Establish communications with equipment boss and operator. Do not work down slope from equipment. Follow agency guidelines for chipping operations.	HIGH
Physical Factors	Maintain hydration schedule. Closely monitor work rate and implement rest periods. Maintain nutrition. Ensure adequate work/rest.	MODERATE
Fire Behavior	Be aware of burn windows and weather impacts and min/max RH for flashy fuels/local conditions. Report changes to FBAN and IMET. Establish MAP for disengagement to provide for an orderly retreat given lack of safety zones. <b>Have a plan for disengagement that establishes a designated meeting point and maintains personnel accountability.</b>	MODERATE
Steep Terrain/Gravity	Establish LCES. Do not work crews above or below each other. Post lookouts for rolling material. Watch footing in loose soil, rock and around vegetation. Do not work below heavy equipment. Scout and identify travel routes.	MODERATE
Transportation	Sign all incident roads that provide access to divisions. Provide daily updated travel plan maps. Practice defensive driving. In local communities obey the posted speed limits. Use reader boards to provide advanced warning and control entry to base camp as needed. Identify and evaluate contingency and alternate escape and travel routes. Provide dust abatement and grading as needed. Provide advanced scouting for transport access and bridge weight restrictions.	MODERATE
Unburned Fuels/Firing Ops	Establish LCES. Ensure management action points are implemented and followed. Weather updates as needed during burning operations. Locate indirect firelines to minimize unburned fuels. Follow Interagency Ignition Guide. Ensure communications between all firing operations. Establish road security at all firing sites. Follow approved firing plan for unburned fuels.	MODERATE
Environmental Factors	Assign medical personnel to camp. Assess for known allergies and report to medical personnel. Obtain Bee Bopper/wasp spray and yellow jacket traps. Maintain an awareness wildlife and poison oak. Identify and report allergies to your chain of command.	MODERATE
Communication	Evaluate for dead zones prior to engagement. Utilize human repeaters as needed. Ensure accountability of resources in problem areas. Spiking resources must have communication coverage.	LOW
Viral Transmission Mitigations, Communicable Disease	Maintain awareness of health, perform self checks, maintain social distancing, wear face coverings in accordance with CDC recommendations. Report and isolate if not feeling well. Use remote briefings, spike camps and logistical layouts that provide for social distancing as necessary. Establish liaison with Lane County Public Health.	LOW
Public Interaction	Implement area and road closures as necessary. Maintain a lookout for hunters in and out of closure areas. Maintain awareness of evacuation areas and provide accurate information dissemination.	LOW
Initial Attack	Ensure identified IA resources are briefed of expectations and ensure communication plan is provided. Ensure resources are briefed on IA command structure. Provide identified crews with area maps.	LOW



**Division/Group Assignment List (ICS 204 WF)**  
**Controlled Unclassified Information//Basic**

<b>1. Incident Name:</b>				<b>3.</b>		
CEDAR CREEK				<b>Branch:</b>  WEST	<b>Division/Group</b>  A	
<b>2. Operational Period: DAY</b>						
Date/Time From: 10/10/2022 0700 MON		Date/Time To: 10/10/2022 2000 MON				
<b>4. Operations Personnel</b>						
<b>FIELD OPERATIONS</b>	AARON ROWE MIKE DAVIS (T)			<b>BRANCH DIRECTOR</b>	AARON ROWE HECTOR MEDRANO (T)	
<b>DIVISION/GROUP SUPERVISOR</b>	ISAIAH SALSKY			<b>AIR OPERATIONS BRANCH DIRECTOR</b>	PAUL BALFOUR	
<b>SAFETY OFFICER</b>	TROY CORN JACK CATES					
<b>5. Resources Assigned this Period</b>						
Strike Team / Task Force / Resource Designator	LWD	Leader	Number Persons	Drop Off PT./Time	Pick Up PT./Time	
O-1054 SOF2	10/21	PAUL BRNA	1	ICP/0700	ICP/2000	
O-1008 HEQB	10/15	SETH POWELL	1	ICP/0700	ICP/2000	
C-122 CR2I SRV #12	10/22	JAY JACOBO	21	ICP/0700	ICP/2000	
E-567 ENG6 FIRST STRIKE	10/16	SPENCER BERLIER	3	ICP/0700	ICP/2000	
E-590 ENG6 DIAMOND ROAD MAINTENANCE	10/21	TYLER DWER	3	ICP/0700	ICP/2000	
E-554 WTT2 PARAGON WATER TENDERS	10/23	BILL POTTS	1	ICP/0700	ICP/2000	
E-558 EXC3 V WORKS, INC	10/14	JEREMY LINDSTROM	2	ICP/0700	ICP/2000	
O-1039 REAF	10/18	TARA INCE-JOHANNSEN (T)	1	ICP/0700	ICP/2000	
O-1060 REAF	10/16	MARK LEHNER	1	ICP/0700	ICP/2000	
S-1333 MEDIC 35	10/14	CHANDLER LEFEVER	2	ICP/0700	ICP/2000	
E-99 AMBULANCE 1	10/21	SHELBY WHITE	2	ICP/0700	ICP/2000	
<b>8. Division/Group Communication Summary</b>						
Function	Channel	RX Frequency N/W	RX Tone/NAC	TX Frequency N/W	TX Tone/NAC	Mode
COMMAND	1	170.0000 N	136.5	166.6750 N	136.5	A
COMMAND	4	171.9000 N	136.5	165.9875 N	136.5	A
TACTICAL	8	168.6000 N	136.5	168.6000 N	136.5	A
AIR TO GROUND	13	168.3375 N		168.3375 N		A
AIR TO GROUND	14	169.4625 N		169.4625 N		A
<b>9. Prepared By (Resource Unit Leader)</b>			<b>Approved By (Planning Section Chief)</b>		<b>Date</b>	<b>Time</b>
TERI PARVIN			JILL JOHNSON		10/09/2022	2000

## Division/Group Assignment List (ICS 204 WF)

Controlled Unclassified Information//Basic

<b>1. Incident Name:</b>				<b>3.</b>			
CEDAR CREEK				<b>Branch:</b>  WEST		<b>Division/Group</b>  A	
<b>2. Operational Period:</b> DAY							
Date/Time From: 10/10/2022 0700 MON		Date/Time To: 10/10/2022 2000 MON					
<b>4. Operations Personnel</b>							
<b>FIELD OPERATIONS</b>		AARON ROWE MIKE DAVIS (T)		<b>BRANCH DIRECTOR</b>		AARON ROWE HECTOR MEDRANO (T)	
<b>DIVISION/GROUP SUPERVISOR</b>		ISAAH SALSKY		<b>AIR OPERATIONS BRANCH DIRECTOR</b>		PAUL BALFOUR	
<b>SAFETY OFFICER</b>		TROY CORN JACK CATES					
<b>5. Resources Assigned this Period</b>							
Strike Team / Task Force / Resource Designator		LWD	Leader	Number Persons	Drop Off PT./Time	Pick Up PT./Time	
<b>6. Control Operations/Work Assignments:</b>							
Task: Conduct suppression repair on the 305, 310, and 750 roads. Monitor, patrol, and mop up both direct and indirect primary control lines.							
Purpose: Return roads to previous maintenance standard. Secure fire edge on the 19 and 1938 roads.							
End State: Roads are returned to pre-fire conditions. 50ft of mop-up complete where clean black exists.							
<b>7. Special Instructions:</b>							
<ul style="list-style-type: none"> <li>Be IA ready.</li> <li>Area to be avoided are marked with either black/yellow or red dot on white flagging.</li> <li>Consult resource advisors if you have any questions.</li> <li>Backhaul all excess equipment.</li> </ul>							
<b>8. Division/Group Communication Summary</b>							
Function	Channel	RX Frequency N/W	RX Tone/NAC	TX Frequency N/W	TX Tone/NAC	Mode	
COMMAND	1	170.0000 N	136.5	166.6750 N	136.5	A	
COMMAND	4	171.9000 N	136.5	165.9875 N	136.5	A	
TACTICAL	8	168.6000 N	136.5	168.6000 N	136.5	A	
AIR TO GROUND	13	168.3375 N		168.3375 N		A	
AIR TO GROUND	14	169.4625 N		169.4625 N		A	
<b>9. Prepared By (Resource Unit Leader)</b>			<b>Approved By (Planning Section Chief)</b>			<b>Date</b>	<b>Time</b>
TERI PARVIN			JILL JOHNSON			10/09/2022	2000

**Division/Group Assignment List (ICS 204 WF)**  
**Controlled Unclassified Information//Basic**

<b>1. Incident Name:</b>				<b>3.</b>		
CEDAR CREEK				<b>Branch:</b>  WEST	<b>Division/Group</b>  T	
<b>2. Operational Period: DAY</b>						
Date/Time From: 10/10/2022 0700 MON		Date/Time To: 10/10/2022 2000 MON				
<b>4. Operations Personnel</b>						
<b>FIELD OPERATIONS</b>		AARON ROWE MIKE DAVIS (T)		<b>BRANCH DIRECTOR</b>		AARON ROWE HECTOR MEDRANO (T)
<b>DIVISION/GROUP SUPERVISOR</b>		SAM STEINSHOUER		<b>AIR OPERATIONS BRANCH DIRECTOR</b>		PAUL BALFOUR
<b>SAFETY OFFICER</b>		TROY CORN JACK CATES				
<b>5. Resources Assigned this Period</b>						
Strike Team / Task Force / Resource Designator		LWD	Leader	Number Persons	Drop Off PT./Time	Pick Up PT./Time
O-1055 SOF2		10/19	MITCH WILSON	1	ICP/0700	ICP/2000
O-905 TFLD		10/12	TED PIEHL	1	**SWING SHIFT**/	
O-983 TFLD		10/12	PAUL BASYE	1	ICP/0700	ICP/2000
O-1086 STEN		10/22	ERIC KIEHN	1	ICP/0700	ICP/2000
O-1046 FMOD PACIFIC RIDGELINE		10/18	ADAM MILLER	2	ICP/0700	ICP/2000
O-1075 FMOD TIRY TUDOR		10/21	JOSH TUDOR	1	ICP/0700	ICP/2000
O-1076 FMOD TIMBER TIPPER		10/21	BRANDON DANVILLE	2	ICP/0700	ICP/2000
O-5057 FMOD TIMBER TIPPER		10/19	GERALD FLOYD	2	ICP/0700	ICP/2000
C-123 CRW1 PLUMAS IHC		10/20	MIKE SHERMAN	18	ICP/0700	ICP/2000
C-125 CRW1 ENTIAT IHC		10/15	DANIEL PICKARD	23	ICP/0700	ICP/2000
C-126 CRW1 FEATHER RIVER IHC		10/22	MATT CLEMINS	23	ICP/0700	ICP/2000
C-127 CR2I PATRICK ENV		10/21	DUSTIN DUFFY	20	ICP/0700	ICP/2000
C-5033 CRW2 PACIFIC OASIS 6		10/13	GEOFFERY ANDERSON	20	ICP/0700	ICP/2000
E-573 ENG3 CA-CNF E328		10/20	ARTHUR BUONAURO	5	ICP/0700	ICP/2000
E-592 ENG3 FIREMOG		10/21	MIKE PARENT	6	ICP/0700	ICP/2000
<b>8. Division/Group Communication Summary</b>						
Function	Channel	RX Frequency N/W	RX Tone/NAC	TX Frequency N/W	TX Tone/NAC	Mode
COMMAND	3	171.0625 N	136.5	162.8125 N	136.5	A
COMMAND	2	170.6875 N	136.5	166.5750 N	136.5	A
TACTICAL	9	166.7250 N	136.5	166.7250 N	136.5	A
AIR TO GROUND	13	168.3375 N		168.3375 N		A
AIR TO GROUND	14	169.4625 N		169.4625 N		A
<b>9. Prepared By (Resource Unit Leader)</b>			<b>Approved By (Planning Section Chief)</b>		<b>Date</b>	<b>Time</b>
TERI PARVIN			JILL JOHNSON		10/09/2022	2000

## Division/Group Assignment List (ICS 204 WF)

Controlled Unclassified Information//Basic

<b>1. Incident Name:</b>				<b>3.</b>			
CEDAR CREEK				<b>Branch:</b>  <b>WEST</b>	<b>Division/Group</b>  <b>T</b>		
<b>2. Operational Period:</b> <b>DAY</b>							
Date/Time From: 10/10/2022 0700                      MON		Date/Time To: 10/10/2022 2000                      MON					
<b>4. Operations Personnel</b>							
<b>FIELD OPERATIONS</b>		AARON ROWE MIKE DAVIS (T)		<b>BRANCH DIRECTOR</b>		AARON ROWE HECTOR MEDRANO (T)	
<b>DIVISION/GROUP SUPERVISOR</b>		SAM STEINSHOUER		<b>AIR OPERATIONS BRANCH DIRECTOR</b>		PAUL BALFOUR	
<b>SAFETY OFFICER</b>		TROY CORN JACK CATES					
<b>5. Resources Assigned this Period</b>							
Strike Team / Task Force / Resource Designator		LWD	Leader	Number Persons	Drop Off PT./Time	Pick Up PT./Time	
E-569 ENG6 FRANCO REFORESTATION		10/13	HUMBERTO CHOY	3	ICP/0700	ICP/2000	
E-589 ENG6 FENIX FORESTRY		10/21	SUZANNE FLYNN	3	ICP/0700	ICP/2000	
E-591 ENG6 C & K WILDLAND FIRE		10/21	GREG NELSON	3	ICP/0700	ICP/2000	
E-593 ENG3 J3 CONTRACTING		10/21	STEWART NICHOLS	3	ICP/0700	ICP/2000	
E-5058 ENG6 DB JET ENTERPRISES		10/11	MAT BLEDSOE	3	ICP/0700	ICP/2000	
ENG4 452 WIF MFRD (L/L)			BRIAN BRADBURY	4	ICP/0700	ICP/2000	
ENG4 454 WIL MFRD (L/L)			JOHN CAROON	4	ICP/0700	ICP/2000	
E-159 WTT2 BELLOIR & SONS		10/18	ROGER BELLOIR	1	ICP/0700	ICP/2000	
E-5008 WTS2 TUB SPRINGS EQUIPMENT		10/13	JOHN MACNAMEE	1	ICP/0700	ICP/2000	
E-5109 WTS2 WILLOW CANYON TRUCKING		10/21	JOHN BARRETT	1	ICP/0700	ICP/2000	
E-5518 WTS2 R25 ENTERPRISES		10/23	RON HAGENAUER	1	ICP/0700	ICP/2000	
DOZ3 NEWBERRY DES NF (L/L)				1	ICP/0700	ICP/2000	
E-586 DOZ3 ROBERT MURRAY		10/21	KENNY MURRAY	2	ICP/0700	ICP/2000	
E-570 SKD2 BREEZE BY FIRE		10/17	CALEB JOCK	2	ICP/0700	ICP/2000	
E-5019 FEL1 TJS CUTTING		10/17	AUSTIN SEEKINS	2	ICP/0700	ICP/2000	
<b>8. Division/Group Communication Summary</b>							
Function	Channel	RX Frequency N/W	RX Tone/NAC	TX Frequency N/W	TX Tone/NAC	Mode	
COMMAND	3	171.0625 N	136.5	162.8125 N	136.5	A	
COMMAND	2	170.6875 N	136.5	166.5750 N	136.5	A	
TACTICAL	9	166.7250 N	136.5	166.7250 N	136.5	A	
AIR TO GROUND	13	168.3375 N		168.3375 N		A	
AIR TO GROUND	14	169.4625 N		169.4625 N		A	
<b>9. Prepared By (Resource Unit Leader)</b>			<b>Approved By (Planning Section Chief)</b>			<b>Date</b>	<b>Time</b>
TERI PARVIN			JILL JOHNSON			10/09/2022	2000

**Division/Group Assignment List (ICS 204 WF)**  
**Controlled Unclassified Information//Basic**

<b>1. Incident Name:</b>				<b>3.</b>			
CEDAR CREEK				<b>Branch:</b>		<b>Division/Group</b>	
<b>2. Operational Period: DAY</b>				<b>WEST</b>		<b>T</b>	
Date/Time From: 10/10/2022 0700      MON		Date/Time To: 10/10/2022 2000      MON					
<b>4. Operations Personnel</b>							
<b>FIELD OPERATIONS</b>		AARON ROWE MIKE DAVIS (T)		<b>BRANCH DIRECTOR</b>		AARON ROWE HECTOR MEDRANO (T)	
<b>DIVISION/GROUP SUPERVISOR</b>		SAM STEINSHOUER		<b>AIR OPERATIONS BRANCH DIRECTOR</b>		PAUL BALFOUR	
<b>SAFETY OFFICER</b>		TROY CORN JACK CATES					
<b>5. Resources Assigned this Period</b>							
Strike Team / Task Force / Resource Designator		LWD	Leader	Number Persons	Drop Off PT./Time	Pick Up PT./Time	
O-960 ARCH		10/11	JASON MCINTEER	1	ICP/0700	ICP/2000	
S-1334 MEDIC 35		10/10	SAVION SOLEIL	2	ICP/0700	ICP/2000	
O-987 BLS 55		10/14	SAGE LYFORD	1	ICP/0700	ICP/2000	
E-257 AMBULANCE 3		10/17	AYALA RAHM	2	ICP/0700	ICP/2000	
<b>6. Control Operations/Work Assignments:</b>							
<p>Task: Continue to hold and secure control lines. Secure fire edge south of DP87 and DP89. Recon for potential control areas northwest of Fuji and Eagle Creek.</p> <p>Purpose: To protect values at risk in the community of Oakridge and Hwy 58 corridor.</p> <p>End State: Keep fire north of the Hwy 58, east of Mount David Douglas, and west of Fuji Mountain</p>							
<b>7. Special Instructions:</b>							
<ul style="list-style-type: none"> <li>• Be IA ready.</li> <li>• Area to be avoided are marked with either black/yellow or red dot on white flagging.</li> <li>• Consult resource advisors if you have any questions.</li> <li>• Backhaul all excess equipment.</li> </ul>							
<b>8. Division/Group Communication Summary</b>							
Function	Channel	RX Frequency N/W	RX Tone/NAC	TX Frequency N/W	TX Tone/NAC	Mode	
COMMAND	3	171.0625 N	136.5	162.8125 N	136.5	A	
COMMAND	2	170.6875 N	136.5	166.5750 N	136.5	A	
TACTICAL	9	166.7250 N	136.5	166.7250 N	136.5	A	
AIR TO GROUND	13	168.3375 N		168.3375 N		A	
AIR TO GROUND	14	169.4625 N		169.4625 N		A	
<b>9. Prepared By (Resource Unit Leader)</b>			<b>Approved By (Planning Section Chief)</b>			<b>Date</b>	<b>Time</b>
TERI PARVIN			JILL JOHNSON			10/09/2022	2000

**Division/Group Assignment List (ICS 204 WF)**  
**Controlled Unclassified Information//Basic**

<b>1. Incident Name:</b>			<b>3.</b>			
CEDAR CREEK			<b>Branch:</b>		<b>Division/Group</b>	
<b>2. Operational Period: DAY</b>			<b>WEST</b>		<b>W</b>	
Date/Time From: 10/10/2022 0700      MON		Date/Time To: 10/10/2022 2000      MON				
<b>4. Operations Personnel</b>						
<b>FIELD OPERATIONS</b>		AARON ROWE MIKE DAVIS (T)		<b>BRANCH DIRECTOR</b>		AARON ROWE HECTOR MEDRANO (T)
<b>DIVISION/GROUP SUPERVISOR</b>		BOB HINDS		<b>AIR OPERATIONS BRANCH DIRECTOR</b>		PAUL BALFOUR
<b>SAFETY OFFICER</b>		TROY CORN JACK CATES				
<b>5. Resources Assigned this Period</b>						
Strike Team / Task Force / Resource Designator		LWD	Leader	Number Persons	Drop Off PT./Time	Pick Up PT./Time
O-1054 SOF2		10/21	PAUL BRNA	1	ICP/0700	ICP/2000
O-984 TFLD		10/12	DREW DINGMANN	1	ICP/0700	ICP/2000
C-128 CR2I PACIFIC OASIS 14A		10/22	JASON MAZA	20	ICP/0700	ICP/2000
E-576 ENG6 J.C. OROZCO		10/19	JAVIER OROZCO	3	ICP/0700	ICP/2000
E-587 ENG6 C & R REFORESTATION		10/21	JAY FLORA	3	ICP/0700	ICP/2000
E-581 EXC3 HUGHES, PATRICK		10/21	PATRICK HUGHES	2	ICP/0700	ICP/2000
O-977 REAF		10/10	NICHOLAS GRANT	1	ICP/0700	ICP/2000
S-279 REMS 1		10/21	TIM MCDANIEL	4	ICP/0700	ICP/2000
<b>6. Control Operations/Work Assignments:</b>						
<b>Task:</b> Continue to secure control lines.						
<b>Purpose:</b> To protect values at risk in community of Oakridge and HWY 58.						
<b>End State:</b> Keep fire north of railroad and the 352 and 353 roads.						
<b>7. Special Instructions:</b>						
<ul style="list-style-type: none"> <li>• Be IA ready</li> <li>• Area to be avoided are marked with either black/yellow or red dot on white flagging.</li> <li>• Consult resource advisors if you have any questions.</li> <li>• Backhaul all excess equipment.</li> </ul>						
<b>8. Division/Group Communication Summary</b>						
Function	Channel	RX Frequency N/W	RX Tone/NAC	TX Frequency N/W	TX Tone/NAC	Mode
COMMAND	2	170.6875 N	136.5	166.5750 N	136.5	A
TACTICAL	10	166.7750 N	136.5	166.7750 N	136.5	A
AIR TO GROUND	13	168.3375 N		168.3375 N		A
AIR TO GROUND	14	169.4625 N		169.4625 N		A
<b>9. Prepared By (Resource Unit Leader)</b>			<b>Approved By (Planning Section Chief)</b>		<b>Date</b>	<b>Time</b>
TERI PARVIN			JILL JOHNSON		10/09/2022	2000

**Division/Group Assignment List (ICS 204 WF)**  
**Controlled Unclassified Information//Basic**

<b>1. Incident Name:</b>			<b>3.</b>			
CEDAR CREEK			<b>Branch:</b>		<b>Division/Group</b>	
<b>2. Operational Period: DAY</b>			<b>WEST</b>		<b>X</b>	
Date/Time From: 10/10/2022 0700 MON		Date/Time To: 10/10/2022 2000 MON				
<b>4. Operations Personnel</b>						
<b>FIELD OPERATIONS</b>		AARON ROWE MIKE DAVIS (T)		<b>BRANCH DIRECTOR</b>		AARON ROWE HECTOR MEDRANO (T)
<b>DIVISION/GROUP SUPERVISOR</b>		DENNIS MAWHINNEY		<b>AIR OPERATIONS BRANCH DIRECTOR</b>		PAUL BALFOUR
<b>SAFETY OFFICER</b>		TROY CORN JACK CATES				
<b>5. Resources Assigned this Period</b>						
Strike Team / Task Force / Resource Designator		LWD	Leader	Number Persons	Drop Off PT./Time	Pick Up PT./Time
O-1054 SOF2		10/21	PAUL BRNA	1	ICP/0700	ICP/2000
O-1021 TFLD		10/18	COLIN GUNDLE	1	ICP/0700	ICP/2000
O-1036 TFLD (T)		10/18	MICHAEL GREGORY	1	ICP/0700	ICP/2000
O-982 HEQB		10/13	TOBY BAKOS	1	ICP/0700	ICP/2000
O-1006 HEQB (T)		10/14	DAN O'NEAL	1	ICP/0700	ICP/2000
O-1038 HEQB (T)		10/17	STUART SMITH-BLOCKLEY	1	ICP/0700	ICP/2000
FELB (T) WIF		10/10	MATT WITTREY	1	ICP/0700	ICP/2000
O-841 FMOD TIMBER TIPPER		10/14	SKYLAR GARDNER	2	ICP/0700	ICP/2000
C-120 CRW2 LOMAKSTSI ECOLOGICAL		10/21	BRAUILO MAYA	20	ICP/0700	ICP/2000
C-5033 CRW2 PACIFIC OASIS 6		10/13	GEOFFERY ANDERSON	20	ICP/0700	ICP/2000
E-566 ENG6 NORTH PACIFIC FORESTRY		10/17	COLLIN FICCADENTI	3	ICP/0700	ICP/2000
E-568 ENG6 FIRST STRIKE #19		10/16	GERALD COATS	3	ICP/0700	ICP/2000
E-575 ENG6 J.C. OROZCO		10/19	SCOTT HANEY	3	ICP/0700	ICP/2000
E-559 EXC3 OWENS FREIGHT LINES		10/14	LEVI HARDWICK	2	ICP/0700	ICP/2000
E-580 EXC3 OWENS FREIGHT LINES		10/21	RANDY HUSTED	2	ICP/0700	ICP/2000
<b>8. Division/Group Communication Summary</b>						
Function	Channel	RX Frequency N/W	RX Tone/NAC	TX Frequency N/W	TX Tone/NAC	Mode
COMMAND	2	170.6875 N	136.5	166.5750 N	136.5	A
TACTICAL	11	168.2500 N	136.5	168.2500 N	136.5	A
AIR TO GROUND	13	168.3375 N		168.3375 N		A
AIR TO GROUND	14	169.4625 N		169.4625 N		A
<b>9. Prepared By (Resource Unit Leader)</b>			<b>Approved By (Planning Section Chief)</b>		<b>Date</b>	<b>Time</b>
TERI PARVIN			JILL JOHNSON		10/09/2022	2000

**Division/Group Assignment List (ICS 204 WF)**  
**Controlled Unclassified Information//Basic**

<b>1. Incident Name:</b>				<b>3.</b>		
CEDAR CREEK				<b>Branch:</b>  WEST	<b>Division/Group</b>  X	
<b>2. Operational Period: DAY</b>						
Date/Time From: 10/10/2022 0700 MON		Date/Time To: 10/10/2022 2000 MON				
<b>4. Operations Personnel</b>						
<b>FIELD OPERATIONS</b>	AARON ROWE MIKE DAVIS (T)			<b>BRANCH DIRECTOR</b>	AARON ROWE HECTOR MEDRANO (T)	
<b>DIVISION/GROUP SUPERVISOR</b>	DENNIS MAWHINNEY			<b>AIR OPERATIONS BRANCH DIRECTOR</b>	PAUL BALFOUR	
<b>SAFETY OFFICER</b>	TROY CORN JACK CATES					
<b>5. Resources Assigned this Period</b>						
Strike Team / Task Force / Resource Designator		LWD	Leader	Number Persons	Drop Off PT./Time	Pick Up PT./Time
E-321 CHSL ATLAS		10/16	JILLIAN FALGE	2	ICP/0700	ICP/2000
O-390 REAF		10/11	THOMAS DAVIS	1	ICP/0700	ICP/2000
S-1127 RAT 2		10/20	ROBERT ABERLE	2	ICP/0700	ICP/2000
<b>6. Control Operations/Work Assignments:</b>						
<p><b>Task:</b> Hold and secure control line.  <b>Purpose:</b> To protect values at risk in community of Oakridge.  <b>End State:</b> Keep fire North of 58 road and east of the 5871 road.</p>						
<b>7. Special Instructions:</b>						
<ul style="list-style-type: none"> <li>• Be IA ready</li> <li>• Area to be avoided are marked with either black/yellow or red dot on white flagging.</li> <li>• Consult resource advisors if you have any questions.</li> <li>• Backhaul all excess equipment.</li> </ul>						
<b>8. Division/Group Communication Summary</b>						
Function	Channel	RX Frequency N/W	RX Tone/NAC	TX Frequency N/W	TX Tone/NAC	Mode
COMMAND	2	170.6875 N	136.5	166.5750 N	136.5	A
TACTICAL	11	168.2500 N	136.5	168.2500 N	136.5	A
AIR TO GROUND	13	168.3375 N		168.3375 N		A
AIR TO GROUND	14	169.4625 N		169.4625 N		A
<b>9. Prepared By (Resource Unit Leader)</b>			<b>Approved By (Planning Section Chief)</b>		<b>Date</b>	<b>Time</b>
TERI PARVIN			JILL JOHNSON		10/09/2022	2000



**Division/Group Assignment List (ICS 204 WF)**  
**Controlled Unclassified Information//Basic**

<b>1. Incident Name:</b>				<b>3.</b>		
CEDAR CREEK				<b>Branch:</b>  WEST	<b>Division/Group</b>  Y	
<b>2. Operational Period: DAY</b>						
Date/Time From: 10/10/2022 0700 MON		Date/Time To: 10/10/2022 2000 MON				
<b>4. Operations Personnel</b>						
<b>FIELD OPERATIONS</b>		AARON ROWE MIKE DAVIS (T)		<b>BRANCH DIRECTOR</b>		AARON ROWE HECTOR MEDRANO (T)
<b>DIVISION/GROUP SUPERVISOR</b>		ANDREW SCHAFFFRAN		<b>AIR OPERATIONS BRANCH DIRECTOR</b>		PAUL BALFOUR
<b>SAFETY OFFICER</b>		TROY CORN JACK CATES				
<b>5. Resources Assigned this Period</b>						
Strike Team / Task Force / Resource Designator		LWD	Leader	Number Persons	Drop Off PT./Time	Pick Up PT./Time
O-1054 SOF2		10/21	PAUL BRNA	1	ICP/0700	ICP/2000
O-1028 TFLD		10/17	DAVID MAYNARD	1	ICP/0700	ICP/2000
O-1029 HEQB (T)		10/17	ETHAN CAMARENA	1	ICP/0700	ICP/2000
O-1022 HEQB		10/19	KYLE CRANMER	1	ICP/0700	ICP/2000
O-868 FMOD PACIFIC RIDGELINE		10/15	SAM HOLSTAD	2	ICP/0700	ICP/2000
O-1045 FMOD GOODSON LOGGING		10/18	NATHANIEL ZELLER	2	ICP/0700	ICP/2000
E-596 ENG3 TORRES CONTRACTING		10/20	CHAD CORWIN	3	ICP/0700	ICP/2000
E-571 EXC3 MARK JONES TRUCKING		10/18	CHAD BROWN	2	ICP/0700	ICP/2000
E-5077 SKD2 HOFBAUER		10/10	ALEX HOMER	2	ICP/0700	ICP/2000
E-355 FEL1 DUKE		10/18	JUSTIN DARSTIN	2	ICP/0700	ICP/2000
E-395 FEL2 MILLER TIMBER		10/12	TREVEN OAKES	1	ICP/0700	ICP/2000
E-5358 FEL2 IDAHO WEST LLC		10/11	RUSS GRANT	2	ICP/0700	ICP/2000
O-1013 REAF		10/14	CHRIS MARTIN	1	ICP/0700	ICP/2000
O-1025 REAF		10/17	ADAM BUCHER	1	ICP/0700	ICP/2000
<b>8. Division/Group Communication Summary</b>						
Function	Channel	RX Frequency N/W	RX Tone/NAC	TX Frequency N/W	TX Tone/NAC	Mode
COMMAND	1	170.0000 N	136.5	166.6750 N	136.5	A
TACTICAL	12	171.1125 N	136.5	171.1125 N	136.5	A
AIR TO GROUND	13	168.3375 N		168.3375 N		A
AIR TO GROUND	14	169.4625 N		169.4625 N		A
<b>9. Prepared By (Resource Unit Leader)</b>			<b>Approved By (Planning Section Chief)</b>		<b>Date</b>	<b>Time</b>
TERI PARVIN			JILL JOHNSON		10/09/2022	2000

**Division/Group Assignment List (ICS 204 WF)**  
**Controlled Unclassified Information//Basic**

<b>1. Incident Name:</b>			<b>3.</b>			
CEDAR CREEK			<b>Branch:</b>		<b>Division/Group</b>	
<b>2. Operational Period: DAY</b>			WEST		Y	
Date/Time From: 10/10/2022 0700 MON		Date/Time To: 10/10/2022 2000 MON				
<b>4. Operations Personnel</b>						
<b>FIELD OPERATIONS</b>		AARON ROWE MIKE DAVIS (T)		<b>BRANCH DIRECTOR</b>		AARON ROWE HECTOR MEDRANO (T)
<b>DIVISION/GROUP SUPERVISOR</b>		ANDREW SCHAFFFRAN		<b>AIR OPERATIONS BRANCH DIRECTOR</b>		PAUL BALFOUR
<b>SAFETY OFFICER</b>		TROY CORN JACK CATES				
<b>5. Resources Assigned this Period</b>						
Strike Team / Task Force / Resource Designator		LWD	Leader	Number Persons	Drop Off PT./Time	Pick Up PT./Time
S-5428 REMS 12		10/13	MARCOS GARCIA	4	ICP/0700	ICP/2000
E-5405 AMBULANCE 7		10/18	ALVIN HORN	2	ICP/0700	ICP/2000
<b>6. Control Operations/Work Assignments:</b>						
<p><b>Task:</b> Secure perimeter along FS road 2409.</p> <p><b>Purpose:</b> To protect values at risk in the community of Oakridge and High Prairie.</p> <p><b>End State:</b> Fire remains inside current containment lines.</p>						
<b>7. Special Instructions:</b>						
<ul style="list-style-type: none"> <li>• Be IA ready.</li> <li>• Areas to be avoided are marked with either black/yellow or red dot on white flagging.</li> <li>• Consult Resource Advisors if you have any questions.</li> <li>• Backhaul all excess equipment.</li> </ul> <p>For interior USFS 24 road system</p> <ul style="list-style-type: none"> <li>• Limit the number of resources that are used to only what is necessary and remain in the area only as long as needed.</li> <li>• Fell immediate hazards, leave trees in place unless you must get them off the roadway.</li> <li>• Evaluate winds during site operations and shut down operations when 20-foot winds exceed 10 mph.</li> <li>• Shut down operations if participation of 1.5 inches in 24 hours over a 48-hour period occurs.</li> <li>• Utilized local hazard tree experts to properly evaluate trees that need to be felled.</li> </ul>						
<b>8. Division/Group Communication Summary</b>						
Function	Channel	RX Frequency N/W	RX Tone/NAC	TX Frequency N/W	TX Tone/NAC	Mode
COMMAND	1	170.0000 N	136.5	166.6750 N	136.5	A
TACTICAL	12	171.1125 N	136.5	171.1125 N	136.5	A
AIR TO GROUND	13	168.3375 N		168.3375 N		A
AIR TO GROUND	14	169.4625 N		169.4625 N		A
<b>9. Prepared By (Resource Unit Leader)</b>			<b>Approved By (Planning Section Chief)</b>		<b>Date</b>	<b>Time</b>
TERI PARVIN			JILL JOHNSON		10/09/2022	2000

**Division/Group Assignment List (ICS 204 WF)**  
**Controlled Unclassified Information//Basic**

<b>1. Incident Name:</b>				<b>3.</b>		
CEDAR CREEK				<b>Branch:</b>	<b>Division/Group</b>  P	
<b>2. Operational Period: DAY</b>						
Date/Time From: 10/10/2022 0700 MON		Date/Time To: 10/10/2022 2000 MON				
<b>4. Operations Personnel</b>						
<b>FIELD OPERATIONS</b>		AARON ROWE MIKE DAVIS (T)		<b>DIVISION/GROUP SUPERVISOR</b>		JOE HARRIS
<b>AIR OPERATIONS BRANCH DIRECTOR</b>		PAUL BALFOUR		<b>SAFETY OFFICER</b>		TROY CORN JACK CATES
<b>5. Resources Assigned this Period</b>						
Strike Team / Task Force / Resource Designator		LWD	Leader	Number Persons	Drop Off PT./Time	Pick Up PT./Time
O-1037.61 SOFR		10/21	PHIL GRAHAM	1	JUNCTION CAMP/0700	JUNCTION CAMP/2000
O-5338 TFLD		10/13	ERIC BADER	1	JUNCTION CAMP/0700	JUNCTION CAMP/2000
O-5408 TFLD		10/13	PAUL MANCUSO	1	JUNCTION CAMP/0700	JUNCTION CAMP/2000
C-5037 CRW2 MR CONTRACTING CREW 1		10/11	TOMAS GUZMAN	20	JUNCTION CAMP/0700	JUNCTION CAMP/2000
C-5038 CRW2 TABLE ROCK FORESTRY		10/11	TOMAS GOMEZ	20	JUNCTION CAMP/0700	JUNCTION CAMP/2000
E-574 ENG6 OR-MAF 44		10/19	MITCHELL FORTE	4	JUNCTION CAMP/0700	JUNCTION CAMP/2000
E-595 ENG3 ENG3 FIREMOG		10/21	KEVIN STULTZ	6	JUNCTION CAMP/0700	JUNCTION CAMP/2000
E-5522 ENG6 RUE FOREST CONTRACTING		10/12	ANTHONY CUNIAL	3	JUNCTION CAMP/0700	JUNCTION CAMP/2000
E-5007 WTS2 PATRICK HUGHES TRUCKING		10/12	GARY HUGHES	1	JUNCTION CAMP/0700	JUNCTION CAMP/2000
E-5371 CHP2 HI COUNTRY		10/15	JOHN CONGER	3	JUNCTION CAMP/0700	JUNCTION CAMP/2000
E-5527 CHSL MILLER TIMBER		10/21	BRIAN TAYLOR	2	JUNCTION CAMP/0700	JUNCTION CAMP/2000
O-5403 REAF		10/11	JEFF JACKSON	1	JUNCTION CAMP/0700	JUNCTION CAMP/2000
O-5412 REAF (T)		10/11	WESLEY BURTON	1	JUNCTION CAMP/0700	JUNCTION CAMP/2000
<b>8. Division/Group Communication Summary</b>						
Function	Channel	RX Frequency N/W	RX Tone/NAC	TX Frequency N/W	TX Tone/NAC	Mode
COMMAND	4	171.9000 N	136.5	165.9875 N	136.5	A
COMMAND	5	170.0125 N	136.5	165.2500 N	136.5	A
TACTICAL	12	171.1125 N	136.5	171.1125 N	136.5	A
AIR TO GROUND	13	168.3375 N		168.3375 N		A
AIR TO GROUND	14	169.4625 N		169.4625 N		A
<b>9. Prepared By (Resource Unit Leader)</b>			<b>Approved By (Planning Section Chief)</b>		<b>Date</b>	<b>Time</b>
TERI PARVIN			JILL JOHNSON		10/09/2022	2000

**Division/Group Assignment List (ICS 204 WF)**  
**Controlled Unclassified Information//Basic**

<b>1. Incident Name:</b>			<b>3.</b>			
CEDAR CREEK			<b>Branch:</b>		<b>Division/Group</b>	
<b>2. Operational Period: DAY</b>			P			
Date/Time From: 10/10/2022 0700 MON		Date/Time To: 10/10/2022 2000 MON				
<b>4. Operations Personnel</b>						
<b>FIELD OPERATIONS</b>		AARON ROWE MIKE DAVIS (T)		<b>DIVISION/GROUP SUPERVISOR</b>		JOE HARRIS
<b>AIR OPERATIONS BRANCH DIRECTOR</b>		PAUL BALFOUR		<b>SAFETY OFFICER</b>		TROY CORN JACK CATES
<b>5. Resources Assigned this Period</b>						
Strike Team / Task Force / Resource Designator		LWD	Leader	Number Persons	Drop Off PT./Time	Pick Up PT./Time
S-449 MEDIC 7		10/16	FISHER / HAVER	2	JUNCTION CAMP/0700	JUNCTION CAMP/2000
S-5052 MEDIC 3		10/14	BRODZIK / JASPER	2	JUNCTION CAMP/0700	JUNCTION CAMP/2000
E-5465 AMBULANCE 4		10/18	SANDS / BENETT	2	JUNCTION CAMP/0700	JUNCTION CAMP/2000
<b>6. Control Operations/Work Assignments:</b>						
<p><b>Task:</b> Conduct suppression repair and keep the fire north of the 4290 road.</p> <p><b>Purpose:</b> Protect values at risk on the east side of Waldo Lake while minimizing additional resource damage.</p> <p><b>End State:</b> Control lines are repaired to suppression repair standards while minimizing the threat of the fire to values at risk.</p>						
<b>7. Special Instructions:</b>						
Waldo Lake should not be used as a water source.						
Continue Repair work:						
<ul style="list-style-type: none"> <li>• Repair handlines</li> <li>• Repair machine lines</li> <li>• Pull slash</li> <li>• Recon and scout if other repair work is needed</li> </ul>						
<b>8. Division/Group Communication Summary</b>						
Function	Channel	RX Frequency N/W	RX Tone/NAC	TX Frequency N/W	TX Tone/NAC	Mode
COMMAND	4	171.9000 N	136.5	165.9875 N	136.5	A
COMMAND	5	170.0125 N	136.5	165.2500 N	136.5	A
TACTICAL	12	171.1125 N	136.5	171.1125 N	136.5	A
AIR TO GROUND	13	168.3375 N		168.3375 N		A
AIR TO GROUND	14	169.4625 N		169.4625 N		A
<b>9. Prepared By (Resource Unit Leader)</b>			<b>Approved By (Planning Section Chief)</b>		<b>Date</b>	<b>Time</b>
TERI PARVIN			JILL JOHNSON		10/09/2022	2000

**Division/Group Assignment List (ICS 204 WF)**  
**Controlled Unclassified Information//Basic**

<b>1. Incident Name:</b>				<b>3.</b>		
CEDAR CREEK				<b>Branch:</b>	<b>Division/Group</b>  R	
<b>2. Operational Period: DAY</b>						
Date/Time From: 10/10/2022 0700 MON		Date/Time To: 10/10/2022 2000 MON				
<b>4. Operations Personnel</b>						
<b>FIELD OPERATIONS</b>		AARON ROWE MIKE DAVIS (T)		<b>DIVISION/GROUP SUPERVISOR</b>		JEREMY KOLAKS
<b>AIR OPERATIONS BRANCH DIRECTOR</b>		PAUL BALFOUR		<b>SAFETY OFFICER</b>		TROY CORN JACK CATES
<b>5. Resources Assigned this Period</b>						
Strike Team / Task Force / Resource Designator		LWD	Leader	Number Persons	Drop Off PT./Time	Pick Up PT./Time
O-1037.61 SOFR		10/21	PHIL GRAHAM	1	JUNCTION CAMP/0700	JUNCTION CAMP/2000
O-963 TFLD		10/11	JEREMY D BRYANT	1	JUNCTION CAMP/0700	JUNCTION CAMP/2000
O-5407 TFLD		10/14	KADELL DEASON	1	JUNCTION CAMP/0700	JUNCTION CAMP/2000
O-5409 TFLD		10/13	JUSTEN JOHANSEN	1	JUNCTION CAMP/0700	JUNCTION CAMP/2000
O-5414 TFLD		10/14	KYLE THATCHER (T)	1	JUNCTION CAMP/0700	JUNCTION CAMP/2000
O-5398 HEQB		10/11	RODNEY KENYON (T)	1	JUNCTION CAMP/0700	JUNCTION CAMP/2000
O-5410 HEQB		10/14	SETH GREENE	1	JUNCTION CAMP/0700	JUNCTION CAMP/2000
C-5034 CRW2 PACIFIC OASIS 10		10/16	DONTE MARQUEZ	20	JUNCTION CAMP/0700	JUNCTION CAMP/2000
E-5163 WTT2 PIERCE FIRE		10/15	ZACK SCHWEMER	2	JUNCTION CAMP/0700	JUNCTION CAMP/2000
E-5230 WTS2 K & R CONTRACTING, LLC		10/22	JONATHAN MONROE	1	JUNCTION CAMP/0700	JUNCTION CAMP/2000
E-5231 WTS2 TABLE MOUNTAIN		10/26	TOM WHITING	1	JUNCTION CAMP/0700	JUNCTION CAMP/2000
E-5519 WTS2 CLAY'S FAB & REPAIR		10/12	CLAY ALVERNAZ	1	JUNCTION CAMP/0700	JUNCTION CAMP/2000
E-5520 WTS2 MILLER TIMBER		10/16	STEVE ROBERTSON	1	JUNCTION CAMP/0700	JUNCTION CAMP/2000
E-5376 GRD2 TABLE MOUNTAIN FORESTRY		10/12	FRANCIS READY	2	JUNCTION CAMP/0700	JUNCTION CAMP/2000
E-341 EXC2 HATFIELD TRUCKING		10/20	TODD WISBEY	2	JUNCTION CAMP/0700	JUNCTION CAMP/2000
<b>8. Division/Group Communication Summary</b>						
Function	Channel	RX Frequency N/W	RX Tone/NAC	TX Frequency N/W	TX Tone/NAC	Mode
COMMAND	3	171.0625 N	136.5	162.8125 N	136.5	A
COMMAND	5	170.0125 N	136.5	165.2500 N	136.5	A
TACTICAL	8	168.6000 N	136.5	168.6000 N	136.5	A
AIR TO GROUND	13	168.3375 N		168.3375 N		A
AIR TO GROUND	14	169.4625 N		169.4625 N		A
<b>9. Prepared By (Resource Unit Leader)</b>			<b>Approved By (Planning Section Chief)</b>		<b>Date</b>	<b>Time</b>
TERI PARVIN			JILL JOHNSON		10/09/2022	2000

**Division/Group Assignment List (ICS 204 WF)**  
**Controlled Unclassified Information//Basic**

<b>1. Incident Name:</b>				<b>3.</b>			
CEDAR CREEK				<b>Branch:</b>		<b>Division/Group</b>	
<b>2. Operational Period:</b> DAY				R			
Date/Time From: 10/10/2022 0700 MON		Date/Time To: 10/10/2022 2000 MON					
<b>4. Operations Personnel</b>							
<b>FIELD OPERATIONS</b>		AARON ROWE MIKE DAVIS (T)		<b>DIVISION/GROUP SUPERVISOR</b>		JEREMY KOLAKS	
<b>AIR OPERATIONS BRANCH DIRECTOR</b>		PAUL BALFOUR		<b>SAFETY OFFICER</b>		TROY CORN JACK CATES	
<b>5. Resources Assigned this Period</b>							
Strike Team / Task Force / Resource Designator		LWD	Leader	Number Persons	Drop Off PT./Time	Pick Up PT./Time	
E-5458 EXC2 SANTUCCI RANCH TURF LLC		10/25	BRAD SANTUCCI	2	JUNCTION CAMP/0700	JUNCTION CAMP/2000	
E-5501 EXC2 OWENS FREIGHT		10/10	TYLER HARGIS	2	JUNCTION CAMP/0700	JUNCTION CAMP/2000	
E-5502 EXC2 OWENS FREIGHT LINES		10/23	JOHN WAMPLER	2	JUNCTION CAMP/0700	JUNCTION CAMP/2000	
E-552 VROL SCOTT MARSHALL		10/24	FRANK HAYES	2	JUNCTION CAMP/0700	JUNCTION CAMP/2000	
E-5505 DUMP IDAHO WEST		10/11	CHARLES SHIELDS	1	JUNCTION CAMP/0700	JUNCTION CAMP/2000	
O-1059 REAF		10/18	JASON BERNARDS	1	JUNCTION CAMP/0700	JUNCTION CAMP/2000	
S-5049 MEDIC 1		10/12	CROWE / VANIS	2	JUNCTION CAMP/0700	JUNCTION CAMP/2000	
S-5051 MEDIC 2		10/20	LAPEARL / LAWLER	2	JUNCTION CAMP/0700	JUNCTION CAMP/2000	
E-5115 AMBULANCE 6		10/11	NEWMAN / MCDONNELL	2	JUNCTION CAMP/0700	JUNCTION CAMP/2000	
<b>6. Control Operations/Work Assignments:</b>							
<p>Task: Continue shaded fuel break on roads 4668, 4660, and Hwy 46 to specifications by the local unit to ensure fire stays west of these road systems. Repair as appropriate for projected stage of fire suppression.</p> <p>Purpose: Protect values at risk at Twin Lakes Lodge, Wickiup Reservoir, Davis Lake, and the community of Crescent.</p> <p>End State: Fire remains inside current containment lines, and resource values are protected.</p>							
<b>7. Special Instructions:</b>							
Waldo Lake should not be used as a water source.							
<b>8. Division/Group Communication Summary</b>							
Function	Channel	RX Frequency N/W	RX Tone/NAC	TX Frequency N/W	TX Tone/NAC	Mode	
COMMAND	3	171.0625 N	136.5	162.8125 N	136.5	A	
COMMAND	5	170.0125 N	136.5	165.2500 N	136.5	A	
TACTICAL	8	168.6000 N	136.5	168.6000 N	136.5	A	
AIR TO GROUND	13	168.3375 N		168.3375 N		A	
AIR TO GROUND	14	169.4625 N		169.4625 N		A	
<b>9. Prepared By (Resource Unit Leader)</b>			<b>Approved By (Planning Section Chief)</b>			<b>Date</b>	<b>Time</b>
TERI PARVIN			JILL JOHNSON			10/09/2022	2000

**Division/Group Assignment List (ICS 204 WF)**  
**Controlled Unclassified Information//Basic**

<b>1. Incident Name:</b>			<b>3.</b>			
CEDAR CREEK			<b>Branch:</b>		<b>Division/Group</b>	
<b>2. Operational Period: DAY</b>			POTTER-SWAMP			
Date/Time From: 10/10/2022 0700 MON		Date/Time To: 10/10/2022 2000 MON				
<b>4. Operations Personnel</b>						
<b>FIELD OPERATIONS</b>		AARON ROWE MIKE DAVIS (T)		<b>DIVISION/GROUP SUPERVISOR</b>		QUINLAN ANDERSON
<b>AIR OPERATIONS BRANCH DIRECTOR</b>		PAUL BALFOUR		<b>SAFETY OFFICER</b>		TROY CORN JACK CATES
<b>5. Resources Assigned this Period</b>						
Strike Team / Task Force / Resource Designator		LWD	Leader	Number Persons	Drop Off PT./Time	Pick Up PT./Time
HEQB (L/L)			JAIME MARISCAL	1	ICP/0700	ICP/2000
HEQB (T) (L/L)			ADAM VROON	1	ICP/0700	ICP/2000
C2IA WIL HAND CREW #501 (L/L)			JESUS SARAZ	16	ICP/0700	ICP/2000
E-561 EXC2 JERRY SWEARINGEN CONSTRUCTION		10/17	JERRY SWEARINGEN	2	ICP/0700	ICP/2000
E-582 EXC2 ROBERT MURRAY		10/21	CHARLOTTE KAME	1	ICP/0700	ICP/2000
E-563 DUMP LEE ROY BELLOIR & SONS		10/17	LEE ROY BELLOIR	1	ICP/0700	ICP/2000
E-564 DUMP RUSSELS MGNT SERVICES		10/19	WILLY AUSTIN	1	ICP/0700	ICP/2000
E-5275 DUMP BAR SEVEN		10/11	STEPHEN FIELDS	1	ICP/0700	ICP/2000
E-176 AMBU2		10/24	NATHAN GEER	2	ICP/0700	ICP/2000
<b>6. Control Operations/Work Assignments:</b>						
Task: Continue suppression repair work. Purpose: Maintain the integrity of infrastructure and protect natural resources. End State: Return roads and suppression control features to pre-fire conditions per the Willamette NF suppression repair guidelines.						
<b>7. Special Instructions:</b>						
<b>8. Division/Group Communication Summary</b>						
Function	Channel	RX Frequency N/W	RX Tone/NAC	TX Frequency N/W	TX Tone/NAC	Mode
COMMAND	6	170.2625 N	136.5	165.8125 N	136.5	A
COMMAND	7	170.4625 N	103.5	164.8250 N	103.5	A
TACTICAL	11	168.2500 N	136.5	168.2500 N	136.5	A
AIR TO GROUND	13	168.3375 N		168.3375 N		A
AIR TO GROUND	14	169.4625 N		169.4625 N		A
<b>9. Prepared By (Resource Unit Leader)</b>			<b>Approved By (Planning Section Chief)</b>		<b>Date</b>	<b>Time</b>
TERI PARVIN			JILL JOHNSON		10/09/2022	2000

**Division/Group Assignment List (ICS 204 WF)**  
**Controlled Unclassified Information//Basic**

<b>1. Incident Name:</b>				<b>3.</b>		
CEDAR CREEK				<b>Branch:</b>	<b>Division/Group</b>	
<b>2. Operational Period: DAY</b>						
Date/Time From: 10/10/2022 0700 MON		Date/Time To: 10/10/2022 2000 MON		<b>STAGING</b>		
<b>4. Operations Personnel</b>						
<b>FIELD OPERATIONS</b>		AARON ROWE MIKE DAVIS (T)		<b>DIVISION/GROUP SUPERVISOR</b>		
<b>AIR OPERATIONS BRANCH DIRECTOR</b>		PAUL BALFOUR		<b>SAFETY OFFICER</b> TROY CORN JACK CATES		
<b>5. Resources Assigned this Period</b>						
Strike Team / Task Force / Resource Designator		LWD	Leader	Number Persons	Drop Off PT./Time	Pick Up PT./Time
E-5462 SMM1 BRINK BROTHERS INC.		10/19	MATT SAYLES	1	STAGING AREA/0700	STAGING AREA/2000
E-5238 SMM3 HACKER MACHINES		10/14	CHRIS HACKER	2	STAGING AREA/0700	STAGING AREA/2000
E-487 CHSL ATLAS (R&R 10/10 & 10/11)		10/25	JASON MARTIN	2	STAGING AREA/0700	STAGING AREA/2000
E-5371 CHP2 HI COUNTRY		10/15	JOHN CONGER	3	STAGING AREA/0700	STAGING AREA/2000
E-5078 SKD2 RIM ROCK		10/11	MATTHEW PAINTER	2	STAGING AREA/0700	STAGING AREA/2000
E-5079 SKD2 STATEWIDE CONTRACT SERVICES, LLC		10/11	RYAN STEPP	1	STAGING AREA/0700	STAGING AREA/2000
E-551 GRD2 STATEWIDE CONTRACT SERVICES		10/20	AUSTIN PARRETT	2	STAGING AREA/0700	STAGING AREA/2000
<b>6. Control Operations/Work Assignments:</b>						
Park in Staging area for next assignment or instructions.						
<b>7. Special Instructions:</b>						
<b>8. Division/Group Communication Summary</b>						
Function	Channel	RX Frequency N/W	RX Tone/NAC	TX Frequency N/W	TX Tone/NAC	Mode
COMMAND	2	170.6875 N	136.5	166.5750 N	136.5	A
TACTICAL	8	168.6000 N	136.5	168.6000 N	136.5	A
AIR TO GROUND	13	168.3375 N		168.3375 N		A
AIR TO GROUND	14	169.4625 N		169.4625 N		A
<b>9. Prepared By (Resource Unit Leader)</b>			<b>Approved By (Planning Section Chief)</b>		<b>Date</b>	<b>Time</b>
TERI PARVIN			JILL JOHNSON		10/09/2022	2000



**Division/Group Assignment List (ICS 204 WF)**  
**Controlled Unclassified Information//Basic**

<b>1. Incident Name:</b>				<b>3.</b>		
CEDAR CREEK				<b>Branch:</b>	<b>Division/Group</b>	
<b>2. Operational Period: NIGHT</b>						
Date/Time From: 10/10/2022 1730      MON		Date/Time To: 10/11/2022 0700      TUE		<b>NIGHT</b>		
<b>4. Operations Personnel</b>						
<b>FIELD OPERATIONS</b>		AARON ROWE MIKE DAVIS (T)		<b>DIVISION/GROUP SUPERVISOR</b>		MICHAEL SCHINSTOCK
<b>AIR OPERATIONS BRANCH DIRECTOR</b>		PAUL BALFOUR		<b>SAFETY OFFICER</b>		TROY CORN JACK CATES
<b>5. Resources Assigned this Period</b>						
Strike Team / Task Force / Resource Designator		LWD	Leader	Number Persons	Drop Off PT./Time	Pick Up PT./Time
E-5058 ENG6 DB JET ENTERPRISES		10/11	MAT BLEDSOE	3	ICP/1730	ICP/0700
<b>6. Control Operations/Work Assignments:</b>						
Task: Monitor fire on highway 58 corridor and DIVS T. Purpose: Provide intelligence on fire movement and location to day shift resources. End State: Day DIVS T is informed on fire location prior to engaging resources.						
<b>7. Special Instructions:</b>						
<b>8. Division/Group Communication Summary</b>						
Function	Channel	RX Frequency N/W	RX Tone/NAC	TX Frequency N/W	TX Tone/NAC	Mode
COMMAND	1	170.0000 N	136.5	166.6750 N	136.5	A
COMMAND	2	170.6875 N	136.5	166.5750 N	136.5	A
COMMAND	3	171.0625 N	136.5	162.8125 N	136.5	A
COMMAND	4	171.9000 N	136.5	165.9875 N	136.5	A
COMMAND	5	170.0125 N	136.5	165.2500 N	136.5	A
TACTICAL	12	171.1125 N	136.5	171.1125 N	136.5	A
<b>9. Prepared By (Resource Unit Leader)</b>			<b>Approved By (Planning Section Chief)</b>		<b>Date</b>	<b>Time</b>
TERI PARVIN			JILL JOHNSON		10/09/2022	2000

Controlled Unclassified Information/Basic

<b>AIR OPERATIONS SUMMARY CEDAR CREEK</b>	Prepared By: Paul Balfour AOB	Prepared: 10/09/2022	Prepared Time: 1800 hrs.		
	<b>2. OPERATIONAL PERIOD</b> 10/10/2022	<b>START TIME:</b> 0700	<b>END TIME:</b> 1800	<b>SUNRISE:</b> 0717	<b>SUNSET:</b> 1835

<p><b>HIGH, SHIFTING, ERRATIC WINDS WILL AFFECT AIRCRAFT PERFORMANCE AND AVAILABILITY.</b></p> <p>TRACK WATER SOURCE USE ON COST SUMMARIES FOR EACH HELICOPTER.</p> <p>*LEND/LEASE TO NEW IA OUTSIDE THE DELEGATION *</p> <p><b>REQUEST FOR AERIAL DELIVERY OF LINE ORDERS THROUGH <u>COMMUNICATIONS</u>.</b></p> <p><b>REQUEST FOR AA OR HELICOPTERS THROUGH <u>HELIBASE ON COMMAND</u></b></p> <p><b>SCHEDULE FLIGHTS AT EARLIEST POSSIBLE TIME THROUGH 503-551-3973</b></p>	<p><b>4. MEDICAL A/C:</b></p> <p><b>Short Haul Helicopter Located in Sunriver</b></p> <p><b>Follow IWI protocols in case of an emergency.</b></p>	<p><b>TFR 2/2874 (A-164)</b></p> <p><b>Freq. 126.5250</b></p> <p>Ceiling 11,000 MSL</p> <p>0700-2400</p> <p>[Check FAA Website for Updates]</p>
--	---	---

6. PERSONNEL			7. FREQUENCIES			8. FIXED-WING Avail/ Type/ Make-Model/ N#/ Base							
AOBD	Paul Balfour	509-993-8739	A/A TFR		126.5250	ATGS Platforms: Available as needed from Pool							
ASGS	Albert Faria	907-419-5415	A/A (Fixed Wing) A-28		132.4750								
ASGS(t)	Dan Sebern	970-210-1798	A/A (Rotor Wing) A-53		120.0250								
ATGS (Pool)	Joe Cochran	541-699-2280				Airtankers: Order thru ATGS UAS – UR-31 (A-171) Ed Yue 304-906-9065							
ATGS (Pool)	Danny Williams	406-853-5746	A/G West Primary A- 29		168.3375								
HEBM	Steve Spellberg	781-789-1561	A/G West Secondary A-30		169.4625	Crescent Airport (5S2) Elevation 4819' 43 ° 31.967402N 121 ° 57.015535W AIS Hotsy at helibase for bucket/tank rinsing							
			A/G West Firing A-65		171.8375								
Oakridge Helibase		503-551-3973											
UAO Willamette	Justin Vernon	541-224-3627				Email addresses: Finance: <a href="mailto:2022.cedarcreek.finance@firenet.gov">2022.cedarcreek.finance@firenet.gov</a> Helibase: <a href="mailto:2022.cedarcreek.helibase@gmail.com">2022.cedarcreek.helibase@gmail.com</a>							
Oakridge Helibase	Primary Contact Number	503-551-3973	CTAF/UNICOM		122.9	OAKRIDGE AIRPORT: N°43 45.16 X W 122° 30.28 (1393')							
			DECK		163.100 (Tone) rx/tx 136.5								
FAA N#	TY	MAKE/ MODEL	BASE	START	AVAIL	REMARKS	FAA N#	TY	MAKE/ MODEL	BASE	START	AVAIL	REMARKS
N804PJ	1	UH-60	Oakridge	0700	0900	Bucket A-12	HT1048Y	1	S-61A	Sunriver	0700	0900	H20/On Loan A-190
N635CK	1	S-61	Oakridge	0700	0900	Bucket A-188	N350HQ	3	AS 350 B3	Sunriver	0700	0900	Short Haul
N611CK	1	S-61	Sunriver	0700	0900	Bucket A-187	N854H	3	Bell 407	Oakridge	0700	0900	PSD/PAX/H20 A-162
N805RA	1	K-MAX	Crescent	0700	0900	Bucket A-197	N171PL	1	K-MAX	Crescent	0700	0900	Bucket A-35

# INCIDENT RADIO COMMUNICATIONS PLAN (ICS 205)

Controlled Unclassified Information//Basic

<b>1. Incident Name:</b>	<b>2. Date/Time Prepared:</b>	<b>3. Operational Period: DAY</b>	
CEDAR CREEK	Date: 10/09/2022 Time: 2000	Date/Time From: 10/10/2022 0700      MON	Date/Time To: 10/11/2022 0700      TUE

4. Basic Radio Channel Use:										
Zone Group	Ch #	Function	Channel Name/Trunked Radio System Talkgroup	Assignment	RX Freq	RX Tone/NAC	TX Freq	TX Tone/NAC	Mode (A,D, or M)	Remarks
	1	COMMAND	CMD 1	NW AREA OF FIRE	170.0000 N	136.5	166.6750 N	136.5	A	LOCATED - HUCKLEBERRY MTN
	2	COMMAND	CMD 2	SOUTH AREA OF FIRE	170.6875 N	136.5	166.5750 N	136.5	A	LOCATED - WOLF MT
	3	COMMAND	CMD 3	SE AREA OF FIRE	171.0625 N	136.5	162.8125 N	136.5	A	LOCATED - THE TWINS
	4	COMMAND	CMD 4	NORTH AREA OF FIRE	171.9000 N	136.5	165.9875 N	136.5	A	LOCATED - NE OF BOX CANYON
	5	COMMAND	CMD 5	NE AREA OF FIRE	170.0125 N	136.5	165.2500 N	136.5	A	LOCATED - CULTUS MTN
	6	COMMAND	CMD 6	POTTER/BIG SWAMP	170.2625 N	136.5	165.8125 N	136.5	A	LOCATED - WARNER MTN
	7	COMMAND	HUCKLEBERRY	WIF FOREST NET	170.4625 N	103.5	164.8250 N	103.5	A	POTTER/BIG SWAMP FIRES
	8	TACTICAL	TAC 8	DIV A/R AND STAGING	168.6000 N	136.5	168.6000 N	136.5	A	SHARED TACTICAL
	9	TACTICAL	TAC 9	DIV T	166.7250 N	136.5	166.7250 N	136.5	A	
	10	TACTICAL	TAC 10	DIV W	166.7750 N	136.5	166.7750 N	136.5	A	
	11	TACTICAL	TAC 11	DIV X / POTTER;BIG SWAMP	168.2500 N	136.5	168.2500 N	136.5	A	SHARED TACTICAL
	12	TACTICAL	TAC 12	DIV Y / P AND NIGHT	171.1125 N	136.5	171.1125 N	136.5	A	SHARED TACTICAL
	13	AIR TO GROUND	A/G PRI	AIR TO GROUND PRIMARY	168.3375 N		168.3375 N		A	AIR OPS PRIMARY
	14	AIR TO GROUND	A/G SEC	AIR TO GROUND SECONDARY	169.4625 N		169.4625 N		A	AIR OPS SECONDARY
	15	AIR TO GROUND	VMED 29	EMERGENCY USE	155.3475 N		155.3475 N	156.7	A	STATE INTEROP FOR MED FLIGHTS
	16	AIR GUARD	AIRGUARD	AIR GUARD	168.6250 N		168.6250 N	110.9	A	EMERGENCY AIR CONTACT

**5. Special Instructions:** COMMUNICATION PHONE: (971) 240-0689 24-Hours

<b>6. Prepared By</b> (Communications Unit Leader)	Name: MISSY PARKER	Signature: <i>Missy Parker</i>
ICS 205	IAP Page	Date/Time: 10/09/2022 2000

Controlled Unclassified Information//Basic

# Resource Advisor Message

Cedar Creek Fire

Kailey Guerrant, Lead READ, 503-580-5387, [kailey.guerrant@usda.gov](mailto:kailey.guerrant@usda.gov)

## Suppression Repair Standards

### Waterbars

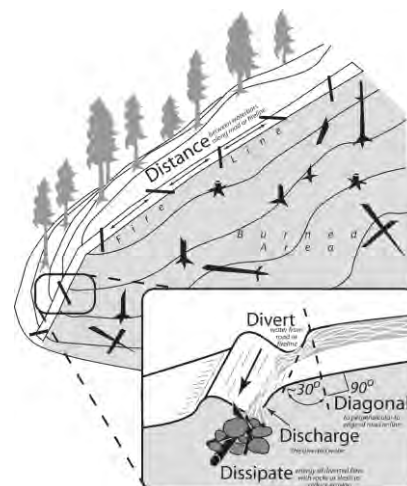
Height of water bar for handlines should average 6-12 inches. Height of machine-constructed water bars not to exceed 18 inches on slopes less than 40%. Height of machine-constructed water bars not to exceed 30 inches on slopes greater than 40%.

- Cut in the water bar – do not simply push up loose soil.
- Water bars should direct runoff away from the burned area where possible.
- Assure that the down slope end of the water bar is open and has adequate length to allow free flow of water off the fire line.
- Logs can be incorporated into water bars as long as they are embedded or anchored in a trench. Ensure fire end of log does not contact any organic material.
- Place slash below outlets of water bars to help slow runoff and collect sediment.

In selecting areas for establishing water bars the following should be considered:

- Locate bars at natural slope breaks. The idea is to move water off the fire line before it can build up enough energy to erode soil.
- When possible, locate bars where the outlet empties onto a resistant surface (i.e. rock or log debris).
- Locate bar outlets to provide maximum buffer distance to stream channel.
- Angle of water bars should be 20-45 degrees to the line.

Fire Line Slope %	Maximum Water Bar Spacing (feet)
2-5	300
6-10	200
11-15	150
16-20	100
21-35	75
36+	50



### Dozer Line Repair

- Pull in berms and woody debris developed in construction of fireline. Distribute this material over the surface of the fire line, similar to the density of the surrounding area.
- Blockade lines at intersect with roads by placing logs and slash across the lines for 300 feet or site distance to minimize motorized use. Take extra care to return the entry points to a natural appearance that blends in with the surrounding landscape to the extent possible.
- At some line intersections with roads, it may be necessary to block access by constructing earthen berms and/or place boulders, heavy logs, slash, and other large vegetative material at the beginning of dozer line. These sites will be identified in Field Maps.
- Other blockage may be identified if lines exposed sensitive areas to future human intrusion.
- Lines requiring native seeding or weed-free mulching will **be identified in the Field Maps. If there isn't enough debris to achieve 50% ground cover, REAFs may identify areas where weed free straw, or wood mulch is needed. Work with a resource advisor to implement seeding where necessary.**

### Chipping Standards

- Provide a 30- foot buffer of no chipping at water crossings or culverts.
- Do not place chips into road ditch.
- Do not chip onto a steep slope where chips will slide back into the ditch.
- Broadcast chipped material, ensuring that chips are no more than 4" deep.

## 640 Road: Cutting and Piling Specifications

- Within the wildlife habitat area: Load and transport piled log rounds from both sides of road and remove outside the core. Pile this material OUTSIDE the wildlife area at designated locations to be later burned following the specs below (NO burn piles within the wildlife habitat area).

### Pile Specifications:

- Okay to fell a few trees <12" DBH within the current fuel break (West) side of road to accommodate the following burn pile specs, as coordinated with onsite READs.
- Min dimensions: 6 ft. W x 6 ft. H with brush and small debris at base;
- Max dimensions: Can NOT encroach into a 25 ft. buffer around adjacent leave trees;
- Chip and broadcast spray material on either side of the road but keep outside of any stream channels

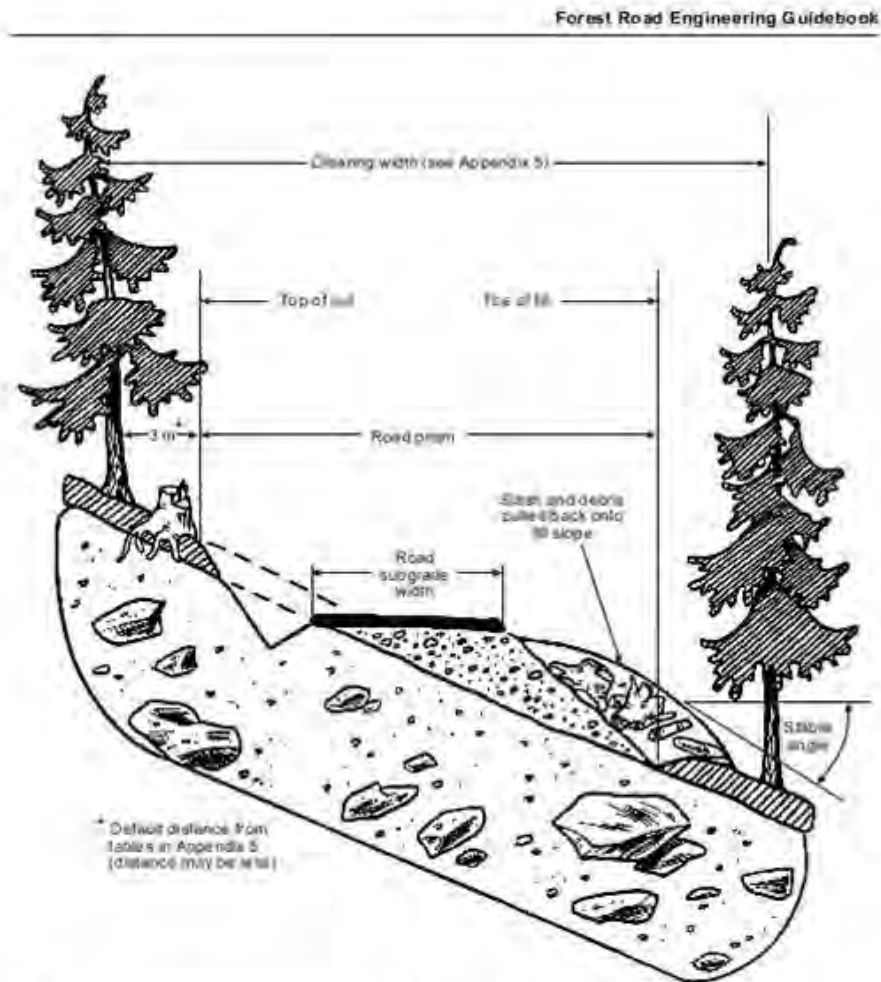


Figure 2. Typical roadway on moderate slopes with no additional clearing.

Please reach out to the REAF assigned to your division with any questions or concerns.

# DEMOB INSTRUCTIONS

## *Cedar Creek, Junction Camp, Big Swamp & Potter*

**AIR TRAVEL – All resources requiring air travel to their home unit must call DEMOB 72 hours in advance of departure date to make travel arrangements.**

**DEMOB LOCATIONS:** All demobs will occur at the resource current locations (Oakridge Camp or Junction Camp). Please follow the steps in this order.

1. **IAP:** Refer to the Tentative Demob list for your assigned Demob date/time.
2. **WEED WASH:** All OFF-ROAD resources need to complete a weed wash before leaving. Weed wash is located at Kokanee Staging near Oakridge Camp and Pit Staging near Junction Camp.
3. **GROUND SUPPORT:** Equipment contractors need to pick up inspection forms at Ground Support. If damage or claims are reported an inspection may be performed. Ground Support will inform Demob when completed.
4. **COMMUNICATIONS AND SUPPLY:** Turn in all checked out items to the respective units. As items are returned, Demob will be notified.
5. **FINANCE:** Report to Finance and close out all final paperwork.
6. **DEMOB:** Once closed out in Finance, call Demob at 541-482-1331. If no answer, try again in a few minutes. If still no answer, then leave a message with the following information:
  - a. Your Resource Order Number
  - b. Name of Resource/Company
  - c. City/State you are traveling to
  - d. Estimate time of departure and arrival
    - i. Rest overnight (RON) location if applicable.

**This is the last step before you start your travel.**

\*\*\*\*\*

**Demob: 541-482-1331                      [2022.cedarcreek.demob@firenet.gov](mailto:2022.cedarcreek.demob@firenet.gov)**

# Cedar Creek Fire

## Tentative Demob List

**Time** **Monday 10/10/2022**

700	C-113	ZIG ZAG IHC	CRW1
700	C-115	WEST COAST REFOR	CRW2
730	C-116	GRAYBACK FORESTRY	CRW1
700	E-75	M&M RESOURCES	STK2
715	E-383	ATLAS TREE SURGERY	CHSL
730	E-547	FIRST STRIKE ENV	ENG6
745	E-548	FIRST STRIKE ENV	ENG6
800	E-5523	FIRST STRIKE ENV	ENG6
830	E-526	PACIFIC RIDGELINE	LOGT
	O-888	LEONARD, VICKIE	COMT
	O-941	MORRIS-TITUS, MARIAH	INBA
	O-942	HOOPER, ELIZABETH	PIOT
	O-974	SHEPARD, ELIZABETH	ITSS
	O-5309	ADVENTURE MEDICS	EMPF
	O-5376	MACIAS, MIGUEL	EQPM
	O-5378	ALLEN, SAMUEL R	GSUL

**Time** **Tuesday 10/11/2022**

800	C-5036	NW-MHF TLJC #4	CRWC
830	E-461	KING	HND1
900	E-5358	IDAHO WEST LLC	FEL2
	O-875	BOSWELL, GRADY	RADO
	O-898	PRIEST, HEATHER	RADO
	O-917.29	VAN NOSTRAND, HALA	SEC2
	O-917.45	MARSHALL, KRISTEN	SITL
	O-927	FOX-HUMPHREYS, L	RADO
	O-968	HOEFS, AIMEE	INCM
	O-971	BAKER, JORDAN	ICPI
	O-977	GRANT, NICHOLAS	REAF

**Time** **Wednesday 10/12/2022**

700	E-5058	DB JET ENTERPRISES	ENG6
900	E-70	HANNA, GLENN	PUP1
	O-910	ESPARZA, RUDY	SECG
	O-943	WOOD, CLAIRE LOUISE	EQTR
	O-960	MCINTEER, JASON	REAF
	O-978	LIGHTSEY, ARIEL	PIOF
	O-5389	COLBY, DARIN	FSC3
	O-5391	HOGG, BARBARA JANE	PTRC

# TRAINING MESSAGE

**Training Specialist Check-in** – If you have a position task book (PTB), please scan the QR code below to initiate the check-in process with the Incident Training Specialist. Please complete the form in its entirety. Upon completion, at your earliest convenience, email a copy of your qualification card and position task book cover (see below for email address).

For your convenience, an electronic ICS-225 or ICS-226, Evaluation Record, and other appropriate assignment documentation will be sent to you after you complete the check-in process.



## [CEDAR CREEK TRAINEE CHECK IN](#)

### **Incident Assignment Requirements –**

1. Ensure your trainer(s)/evaluator(s) has/have initialed completed tasks in your PTB,
2. Obtain an Incident Performance Rating,
3. Obtain an Evaluation Record,
4. If evaluator initialed #1 on your Evaluation Record, ensure he/she signs as final evaluator (located on the backside of your PTB cover page),
5. Email all documentation (including item #4), when appropriate,
6. Complete Exit Interview (form will be provided via email).

### **Training Specialist**

Debra Packard, 559-623-2983

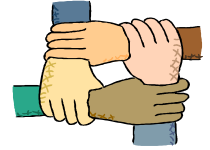
Email: [debra\\_packard@firenet.gov](mailto:debra_packard@firenet.gov)

**NOTE: If you previously checked in with the RIST training specialist assigned to this incident, you do not need to check in again. The RIST training specialist, JoAnne Ware, will continue working with you to close out your training assignment.**





# Human Resource Message



**Cedar Creek Fire – October 10-11, 2022**

## **MUTUAL RESPECT**

**This has been a long fire season and folks may be feeling a bit stressed for many reasons. As a gentle reminder, try to be a good neighbor, act in a professional manner and treat everyone with dignity and respect.**

**Here are some simple ways to show respect to others:**

- **Put down the toilet seat after using the Porta John**
- **Don't talk on cell phones in the sleeping area**
- **Drive slowly while in camp or when driving through the local community**
- **Be respectful, tolerant, and kind.**

**Thank you for respectfully, listening. Stay safe and enjoy your day!**



**HRSP Contacts: Susie Manezes -602-571-9327 and Debra Packard -559-623-2983**

**LOGISTICS (Hours of Operation & Information)****OAKRIDGE BASE CAMP**

Kitchen/Meals	0530 - 0900 1730 - 2030	Breakfast Dinner
Showers	0530 - 1200 and 1400 - 2200	
Laundry	0500 - 1200 and 1700 - 2200	1.5 hour turn around

**KOKANEE STAGING**

Ground Support	0530 - 2100	
Mechanic	0600 - 2100	
Inspections	0530 - 2100	
Weed Wash	0700 - 2100	
Supply	0530 - 2100	Email to <a href="mailto:2022.cedarcreek.supply@gmail.com">2022.cedarcreek.supply@gmail.com</a>
Ordering**	0600 - 2100	Email to <a href="mailto:2022.cedarcreek.ordering@firenet.gov">2022.cedarcreek.ordering@firenet.gov</a>
Fuel	0600 - 1100  1300 - 1800 1830 - 2100	Please fill locally if you have capabilities  <b>**Note:</b> Please don't mix any fuel until ready to use. If you do mix it, remember to label it with mix ratio.

**JUNCTION CAMP**

20111 Crescent Lake Hwy, Crescent OR 97733

Kitchen/Meals	0615 - 0900, 1830 - 2130	Breakfast Dinner
Showers	0600 - 1200, 1400 - 2200	
Supply	0600 - 2130	

**LAVA ODELL STAGING**

Ground Support	0530 - 2100	
Fuel	0600 - 1100, 1300 - 1800 1830 - 2100	
Weed Wash	0700 - 2100	

## Ordering Instructions:

1. You must give a date and time needed with a minimum of 48 hours in the future, you can add in the comments "Or sooner if possible".
2. You must your put contact information on the 213.
3. Put both Ordering and Supply (in the "To" block) on your 213 so when it arrives at supply, so they know who to contact.
4. All orders must be approved and signed by Division or higher in Operations or Unit Leader or higher in other sections.



# Finance Message



Finance Email: [2022.cedarcreek.finance@firenet.gov](mailto:2022.cedarcreek.finance@firenet.gov)

SUBJECT: *Include Key Word* **TIME** for Overhead, Crews & Cooperators

SUBJECT: *Include Key Word* **EQUIPMENT** for Contract Resources

OAKRIDGE FINANCE: 971-239-6880

Please Scan this QR code to send all required documents to finance or use the email below



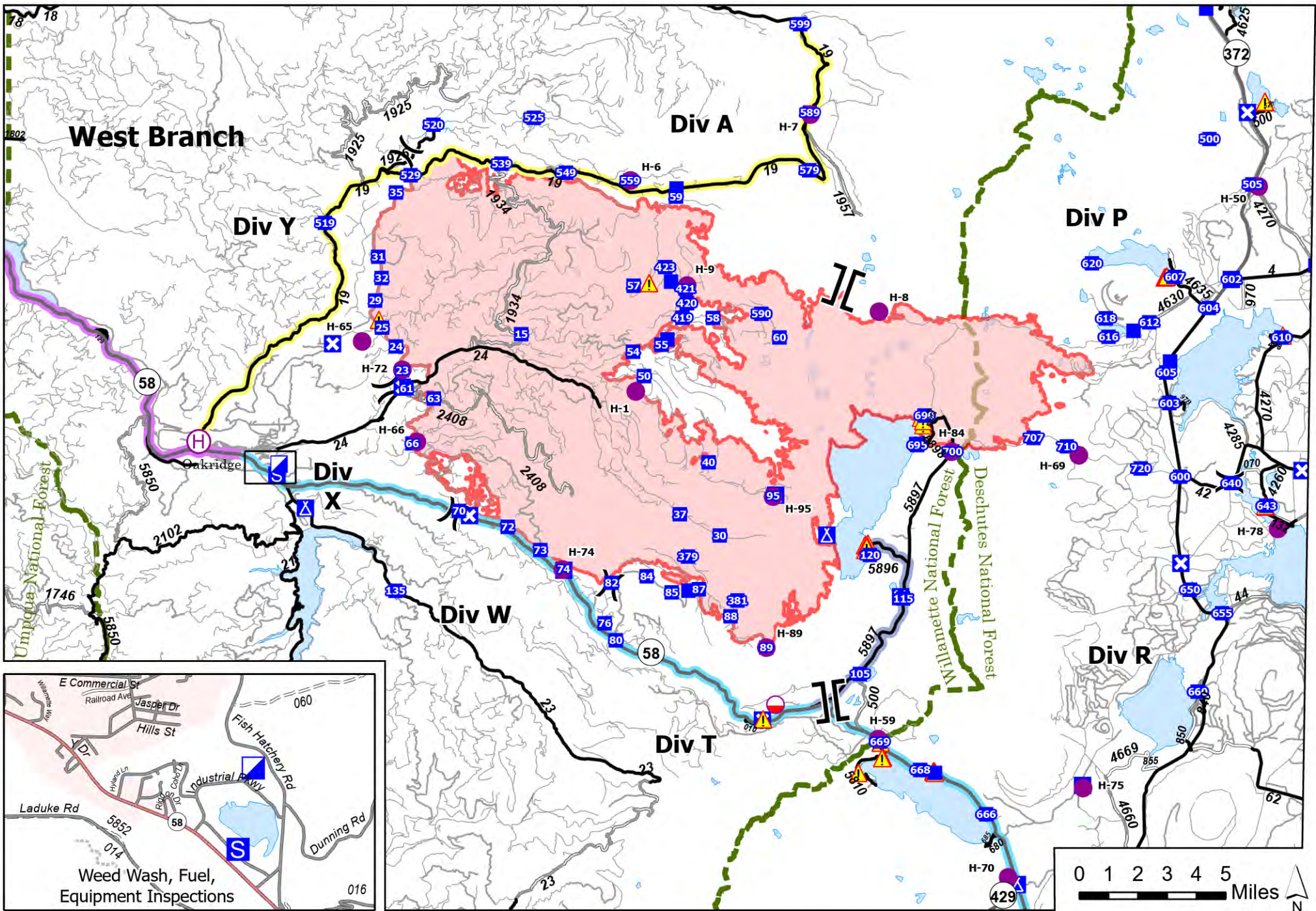
**FINANCE CHECK IN:** [2022.cedarcreek.finance@firenet.gov](mailto:2022.cedarcreek.finance@firenet.gov)

PLEASE ENSURE THE BELOW DOCUMENTS ARE EMAILED

Overhead, Crews & Cooperator Resources	Contract Resources
<ul style="list-style-type: none"> <li>• <b>Check-In:</b> Crew Manifest, Cooperative Agreement (if applies), AD Hire Letter, Resource Order</li> <li>• <b>Daily:</b> Crew Time Report (CTR), Shift Tickets</li> <li>• <b>Demob:</b> Signed OF288, Final Equipment Use Invoice (Cooperator) If you don't have a way to sign you must come to finance.</li> </ul>	<ul style="list-style-type: none"> <li>• <b>Check-In:</b> Resource Order, Contract/VIPR Agreement (make sure you have your UEI, Pre-Inspection</li> <li>• <b>Daily:</b> Shift Tickets, receipts (fuel issues, claims, etc.)</li> <li>• <b>Demob:</b> Contractor Evaluations, Final Shift Tickets and receipt(s) for Addition/Deductions, Post-Inspection, Final Signed Invoices If you don't have a way to sign you must come to finance</li> </ul>

## REMINDERS

- ★ PLEASE ENSURE YOU INCLUDE LOCATION OF WHERE YOU ARE WORKING (CEDAR CREEK DIVISION /POTTER) ON THE CTR OR SHIFT TICKET. MAKE SURE C OR E # IS ON THE CTR OR SHIFT TICKET
- ★ PLEASE SHOW YOUR LUNCH BREAK
- ★ PLEASE USE MILITARY TIME (0001-2400)
- ★ WHEN CLAIMING HAZARD PAY YOU MUST INCLUDE THE SUPPRESSION ACTION BEING PERFORMED. THIS INCLUDES OPERATIONS WHICH DIRECTLY SUPPORT CONTROL OF FIRE (E.G., ACTIVITIES TO EXTINGUISH THE FIRE, FIREFIGHTING, GROUND SCOUTING, SPOT FIRE PATROLLING, SEARCH AND RESCUE OPERATIONS, AND BACKFIRING).
- ★ WHEN SIGNING YOUR OF-288 or OF-286 PLEASE DO NOT LOCK IT or PROTECT THE SIGNATURE, WE HAVE TO BE ABLE TO SIGN IT AND SEND YOU A COPY





## COVID-19 Mitigations for Cedar Creek Fire

- Masks are not required indoors unless working in a county with a HIGH COVID-19 community level. Currently, Lane County community level is LOW (masking indoors is optional).
- Conduct daily verbal screening checks within crews, report any COVID-like symptoms to your direct supervisor. Supervisors should report any positive symptoms to the Medical Unit for next steps.
- Observe social distancing standards while waiting in line for food and limit contact with others outside of your crew in the food service line. If possible, send crew representatives to pick up meals.
- Practice good personal hygiene, wash hands frequently and disinfect high-traffic areas on a regular basis.
- Limit close contact between firefighters and the public as much as possible to prevent exposure and spread.





# EMERGENCY PLAN INCIDENT WITHIN AN INCIDENT

## ON SCENE INCIDENT COMMANDER

In the event of an accident or medical incident of any size, your primary responsibility is to ENSURE that the victim(s) receive prompt and effective Triage, Treatment, Extrication and Transport.

- **ENSURE THE MEDICAL INCIDENT REPORT IN THE INCIDENT ACTION PLAN IS BEING USED AND FOLLOWED- \*IF DETERMINED TO BE A GREEN, DO NOT DECLARE EMERGENCY TRAFFIC AND ONLY COMPLETE LINE 1-4 ON MIR\*.**
- Conduct size-up of the incident nature of accident, number type of resources involved, latitude and longitude location (DD°MMM.MM format): notify incident communications center and supervisor, request assistance as needed.
- Order and coordinate medical and support response to the accident.
- Evaluate special needs (law enforcement, haz mat, etc.).
- Clear the command frequency if medical emergency, coordinate with incident communications and air attack for air medical transportation needs.
- Preserve and photograph the scene for accident investigation.
- Remain aware of surroundings and the status of the main incident (delegate personnel to monitor the main fire) to ensure safety of medical treatment personnel.
- Until relieved, supervise and manage all personnel involved at the incident scene.

## MEDICAL PLAN (ICS 206 WF)

Incident/Project Name		1. Operational Period						
Cedar Creek-Potter/Big Swamp		October 10-11, 2022 0700-0700						
2. Ambulance Services								
Name	Complete Address	Phone	Advanced Life Support (ALS)					
			Yes	No				
Oakridge Fire & EMS	47592 Hwy 58 Oakridge, OR	Command Dispatch 541-682-3978	X					
Eugene Springfield Fire Dept	403 Main St. Springfield, OR	Command 541-682-5899	X					
Sun River Fire & Rescue	57475 Abbott Dr Sunriver, OR	Command	X					
La Pine Fire & Rescue	51590 Huntington Rd La Pine, OR	Command	X					
3. Air Ambulance Services								
Name	Phone	Location						
Emergency Air Transport	Command Secondary 911	Varies based on Availability Use VMED 29 air to ground						
Short Haul	Command Secondary 911	Crescent, OR AS 350 N350HQ						
4. Hospitals								
Name Complete Address	Coordinate Standard Degrees Decimal Minutes DD° MM.MMM' N - Lat DD° MM.MMM' W - Long		Travel Time From Crockett's Knob Air Gnd		Phone	Helipad Yes No		Level of Care Facility
	Sacred Heart Medical Center (Riverbend) 3333 Riverbend, Drive Springfield, OR	Lat: Long:	44°04.881' N 123°01.588' W	15 mins		1 hr	541-222-6931	
Legacy Emanuel 2801 N Gantenbien Portland, OR	Lat: Long:	45°32.59' N 122°40.16' W	30 mins	3 hrs	503-413-2200	X	Level 1 Trauma Burn Center	
St Charles Medical Center 2500 NE Neff Rd Bend, OR	Lat: Long:	44°04.102' N 121°16.053' W	2 hrs	5 hrs	503-413-4321	X	Level 2	
5. Division Branch Group	Capability				Personnel			
Div. A					Ambo 1 (E-99) Medic 34 (S-1333)			
Div. T					Ambo 3 (E-257) Medic 35 (S-1334) BLS 55 (O-987)			
Div. W					REMS 1 (S-279) Shared Resource W/X			



## MEDICAL PLAN (ICS 206 WF)

<b>Div. X</b>	REMS 1 (S-279) Shared Resource W/X RAT 2 -ALS – UTV (S-1127)		
<b>Div. Y</b>	Ambo 7 (E-5405) REMS 12 (S-5428)		
<b>Div. P</b>	Ambo 9 (E-5465) Medic 3 (S-5052) Medic 7 (S-449)		
<b>Div. R</b>	Ambo 6 (E-5115) Medic 1 (S-5049) Medic 2 (S-5051)		
<b>Night Shift</b>	Command/911		
<b>Junction Spike</b>	Lee Venning MEDL Mariann Turley MEDL-t		
<b>Potter/Big Swamp</b>	Ambo 2 (E-176)		
<b>Oakridge Camp</b>	(N) John Nokes – MEDL (D) Diana Braun MEDL		
<b>Oakridge Heli-Base</b>	Necole Ontko – EMPF/MEDL (t) (O-939.3)		
<b>6. Prepared By (Medical Unit Leader)</b>	<b>7. Date/Time</b>	<b>8. Reviewed By (Safety Officer)</b>	<b>9. Date/Time</b>
<b>Diana Braun</b>	<b>10/09/2022 1800</b>	<b>Jack Cates</b> <i>Jack Cates</i>	<b>10/09/2022 1800</b>

# Short-Haul Operations

## CAPABILITIES

- During an operational Short-Haul the helicopter is capable of inserting Short-Haulers into an area with tight canopy cover and/or technical terrain.
- Haul line lengths range from 100 feet to 350 feet.
- Short hauler and/or medical gear can be delivered to the medical scene even if extraction by short-haul is not necessary.

## ORDERING

- EMT or Medical Incident IC determines medical extraction is required.
- Follow local established procedures and/or Medical Incident Report (MIR) in the IRPG.
- Confirm aircraft type, call sign, estimated time of arrival and frequency.
- Give site selection information when ordering: hazards (i.e. ash, smoke, snags, aerial), tree height, terrain, and patient transport configuration (supine or seated position). Repeat hazards and give updated weather conditions as well as brief patient update to responding helicopter.

**PROCESS:** The helicopter will fly to the coordinates provided. They will make contact with ground personnel on scene with the patient using an identified air-to-ground frequency. The helicopter will complete a short-haul recon and size up, gather patient update information and then fly to a landing zone (LZ) to configure for short-haul operations. The helicopter will be monitoring the appropriate air-to-ground, air guard and victor frequencies. From this point, ground resources should only contact the helicopter in case of an emergency. During the insertion and extraction process ground personnel must be clear of the area.

## ON SCENE: EXPECT THE FOLLOWING

- 1 or 2 rescuers (at least one qualified as an EMT or higher)
- Backboard (if needed and not already on scene)
- All equipment necessary for patient extraction

The Patient Extraction Bag accommodates most backboards.  
-A patient on a backboard, TRS, SKED or litter will be inserted into the bag.



The Seat Harness is used for patients not requiring the use of a backboard.



IAP INSERT

# MEDICAL PLAN (ICS 206 WF)

Controlled Unclassified Information//Basic

## Medical Incident Report

**FOR A NON-EMERGENCY INCIDENT, WORK THROUGH CHAIN OF COMMAND TO REPORT AND TRANSPORT INJURED PERSONNEL AS NECESSARY.**

**FOR A MEDICAL EMERGENCY: IDENTIFY ON SCENE INCIDENT COMMANDER BY NAME AND POSITION AND ANNOUNCE "MEDICAL EMERGENCY" TO INITIATE RESPONSE FROM IMT COMMUNICATIONS/DISPATCH.**

Use the following items to communicate situation to communications/dispatch.

**1. CONTACT COMMUNICATIONS / DISPATCH (Verify correct frequency prior to starting report)**

*Ex: "Communications, Div. Alpha. Stand-by for Emergency Traffic."*

**2. INCIDENT STATUS: Provide incident summary (including number of patients) and command structure.**

*Ex: "Communications, I have a Red priority patient, unconscious, struck by a falling tree. Requesting air ambulance to Forest Road 1 at (Lat./Long.) This will be the Trout Meadow Medical, IC is TFLD Jones. EMT Smith is providing medical care."*

Severity of Emergency / Transport Priority	<input type="checkbox"/> RED / PRIORITY 1 Life or limb threatening injury or illness. Evacuation need is IMMEDIATE <i>Ex: Unconscious, difficulty breathing, bleeding severely, 2° – 3° burns more than 4 palm sizes, heat stroke, disoriented.</i> <input type="checkbox"/> YELLOW / PRIORITY 2 Serious Injury or illness. Evacuation may be DELAYED if necessary. <i>Ex: Significant trauma, unable to walk, 2° – 3° burns not more than 1-3 palm sizes.</i> <input type="checkbox"/> GREEN / PRIORITY 3 Minor Injury or illness. Non-Emergency transport <i>Ex: Sprains, strains, minor heat-related illness.</i>	
Nature of Injury or Illness & Mechanism of Injury		<i>Brief Summary of Injury or Illness (Ex: Unconscious, Struck by Falling Tree)</i>
Transport Request		<i>Air Ambulance / Short Haul/Hoist Ground Ambulance / Other</i>
Patient Location		<i>Descriptive Location &amp; Lat. / Long. (WGS84)</i>
Incident Name		<i>Geographic Name + "Medical" (Ex: Trout Meadow Medical)</i>
On-Scene Incident Commander		<i>Name of on-scene IC of Incident within an Incident (Ex: TFLD Jones)</i>
Patient Care		<i>Name of Care Provider (Ex: EMT Smith)</i>

**3. INITIAL PATIENT ASSESSMENT: Complete this section for each patient as applicable (start with the most severe patient)**

Patient Assessment: See IRPG page 106

Treatment:

**4. TRANSPORT PLAN:**

Evacuation Location (if different): (Descriptive Location (drop point, intersection, etc.) or Lat. / Long.) Patient's ETA to Evacuation Location:

Helispot / Extraction Site Size and Hazards:

**5. ADDITIONAL RESOURCES / EQUIPMENT NEEDS:**

*Example: Paramedic/EMT, Crews, Immobilization Devices, AED, Oxygen, Trauma Bag, IV/Fluid(s), Splints, Rope rescue, Wheeled litter, HAZMAT, Extrication*

**6. COMMUNICATIONS: Identify State Air/Ground EMS Frequencies and Hospital Contacts as applicable**

Function	Channel Name/Number	Receive (RX)	Tone/NAC *	Transmit (TX)	Tone/NAC *
COMMAND					
AIR-TO-GRND					
TACTICAL					

**7. CONTINGENCY: Considerations: If primary options fail, what actions can be implemented in conjunction with primary evacuation method? Be thinking ahead.**

**8. ADDITIONAL INFORMATION: Updates/Changes, etc.**

**REMEMBER:** Confirm ETA's of resources ordered. Act according to your level of training. Be Alert. Keep Calm. Think Clearly. Act Decisively.

Controlled Unclassified Information//Basic