



Incident Action Plan **CEDAR CREEK POTTER & BIG SWAMP**

October 11-12, 2022

Operational Period

Dayshift - 0700-2000

Nightshift - 1730-0700



SCAN QR CODE

For

BRIEFING LINK

DOWNLOAD IAP

DOWNLOAD MAPS

Send in PHOTOS

CHECK-IN

Submit TIME to FINANCE

Cedar Creek - OR-WIF-220180 – P6PYP6 (0618)

Cedar Creek – WA DNR – 221-IWA

Potter – OR-WIF-220170 – P6PX6A (0618)

Big Swamp – OR-WIF-220189 – P6PY6M (0618)

INCIDENT OBJECTIVES (ICS 202)

1. Incident Name:	2. Operational Period: DAY	
CEDAR CREEK	Date/Time From: 10/11/2022 0700 TUE	Date/Time To: 10/12/2022 0700 WED
3. Objective(s):		
<p>Provide for firefighter and public safety; specifically manage risk to firefighters by ensuring hazards are identified, assessed and where possible mitigated. Be prepared to accept residual risk when exposure is commensurate with values threatened and the probability of achieving objectives is high.</p> <p>Implement operational plans to keep fire within established primary control lines to protect identified values at risk including:</p> <ul style="list-style-type: none"> • Oakridge, Westfir, and High Prairie, • Highway 58 and Forest Road 19, • Union Pacific railroad corridor and • Waldo Lake and associated recreational investments • Private infrastructure and recreational investments within surrounding Cascade Lakes Highway. • Willamette Pass Ski-Area; Private infrastructure, and Forest Recreational Investments. <p>Promote coordination and partnership by developing clear dialogue and providing timely information between the IMT, affected agencies, and the public. Engage in effective communication with Agency Administrators and cooperators.</p> <p>Coordinate with Resource Advisors to complete fire suppression and approved repair work to protect natural and cultural values.</p>		
4. Operational Period Command Emphasis:		
Complete operational assignments and tasks as directed in the IAP and by your Division Supervisor.		
General Situational Awareness:		
Avoid mission creep and unnecessary exposure to hazards in your Division.		
5. Site Safety Plan Required? Yes <input checked="" type="checkbox"/> No <input type="checkbox"/>		
Approved Site Safety Plan(s) Located ICP		
6. Incident Action Plan (the items checked below are included in this Incident Action Plan):		
<input checked="" type="checkbox"/> ICS 202 <input checked="" type="checkbox"/> ICS 203 <input checked="" type="checkbox"/> ICS 204 <input checked="" type="checkbox"/> ICS 205 <input type="checkbox"/> ICS 205A <input checked="" type="checkbox"/> ICS 206	<input checked="" type="checkbox"/> ICS 207 <input type="checkbox"/> ICS 208 <input checked="" type="checkbox"/> ICS 220 <input checked="" type="checkbox"/> Map/Chart <input checked="" type="checkbox"/> Weather Forecast/Tides/Currents	Other Attachments: <input checked="" type="checkbox"/> FIRE BEHAVIOR, SAFETY MESSAGE <input checked="" type="checkbox"/> HR MESSAGE, FINANCE <input checked="" type="checkbox"/> LOGISTICS INFO, PHONE LISTS <input checked="" type="checkbox"/> UNIT LOG, CHECK-IN / DEMOB
7. Prepared by: JILL JOHNSON	Position/Title: PSC2	Signature: <i>Jill Johnson</i>
8. Approved by Incident Commander:	Name: BOB SHINDELAR	Signature: <i>Bob Shindelar</i>
ICS 202	IAP Page	Date/Time: 10/10/2022 2000

ORGANIZATION ASSIGNMENT LIST (ICS 203)

1. Incident Name:		2. Operational Period: DAY	
CEDAR CREEK		Date/Time From: 10/11/2022 0700 TUE	Date/Time To: 10/12/2022 0700 WED
3. Incident Commander(s) and Command Staff:		DEPUTY	RANDY SPIERING (JUNCTION CAMP)
IC/UC	BOB SHINDELAR	SUPPLY UNIT	JOHN KAUPA
DEPUTY		FACILITIES UNIT	TOM BOYD WHIT SPENCER
SAFETY OFFICER	JACK CATES TROY CORN	GROUND SUPPORT UNIT	DAVE HARSH (ICP) JON KAUTT (JUNCTION CAMP)
INFORMATION OFFICER	JOEL BRUMM LIV STECKER	MEDICAL UNIT	DIANA BRAUN (ICP) LEE VENNING (JUNCTION CAMP)
LIAISON OFFICER	SCOTT CRAWFORD JEFF SEVIGNEY	COMMUNICATIONS UNIT	MISSY PARKER
HUMAN RESOURCES	SUSIE MANEZES (ICP) DEBRA PACKARD (JUNCTION CAMP)	FOOD UNIT	LAURA MILLER
		SECURITY UNIT	KEIRSTEN FORBEY (ICP) RICK SHUE (JUNCTION CAMP)
4. Agency/Organization Representative(s):		7. Operations Section:	
Agency/Organization	Name	FIELD OPS	AARON ROWE MIKE DAVIS (T)
WILAMETTE NF - AA	DARREN CROSS	PLANNING OPS	TONY ENGEL TOMMY MENTZER (T)
DESCHUTES NF - AREP	ROBERT GENTRY	Branch	WEST
MIDDLE FORK DIST RANGER	MOLLY JUILLERANT	BRANCH DIRECTOR	AARON ROWE HECTOR MEDRANO (T)
MIDDLE FORK DIST FMO	JIMMER HUNT	DIVISION/GROUP	A ISAAH SALSKY
WILLAMETTE NF - FOREST SUP	DUANE BISHOP	DIVISION/GROUP	T SAM STEINSHOUER
DESCHUTES NF - FOREST SUP	HOLLY JEWKES	DIVISION/GROUP	W BOB HINDS
LEAD READ	KAILEY GUERRANT	DIVISION/GROUP	X DENNIS MAWHINNEY
		DIVISION/GROUP	Y PHIL GRAHAM
5. Planning Section:			
CHIEF	JILL JOHNSON	DIVISION/GROUP	P JOE HARRIS
DEPUTY	HOWARD JOHNSON (VIRTUAL)	DIVISION/GROUP	POTTER/BIG SWAMP QUINLAN ANDERSON
RESOURCES UNIT	MARGE HUTCHINSON TERI PARVIN	DIVISION/GROUP	R JEREMY KOLAKS
SITUATION UNIT	KRISTEN MARSHALL SCOTT BLISS	DIVISION/GROUP	NIGHT MICHAEL SCHINSTOCK
DOCUMENTATION UNIT	DEIDRE SMITH (VIRTUAL) LT PRATT (RIST)	7b. Air Operations Branch:	
DEMOBILIZATION UNIT	MIKE HESTON (VIRTUAL)	AIR OPS BRANCH DIRECTOR	PAUL BALFOUR
FIRE BEHAVIOR ANALYST	DON STRAND	AIR SUPPORT SUPERVISOR	ALBERT FARIA
TRAINING SPECIALIST	DEBRA PACKARD	8. Finance/Administration Section:	
GIS SPECIALIST	SHAWN BUSHNELL MIKE TONKEL	CHIEF	CHERI FULLER
IT SPECIALIST	GEORGE JENKINS CHARLENE JUMPER	DEPUTY	CHRISTINA GOEBEL
INCIDENT METEOROLOGIST	BOB TOBIN	TIME UNIT	STEVE CROW
		PROCUREMENT UNIT	MARK BOHNET
		COST UNIT	KAY HIGH (VIRTUAL)
		ICPI	ROB HECHINGER
6. Logistics Section:			
CHIEF	KEVIN HAUGHTON KAREN ZIRKLE (T)		
9. Prepared By:	Name: JILL JOHNSON	Position/Title: PSC	Signature: 
ICS 203	IAP Page	Date/Time: 10/10/2022 2000	

FIRE WEATHER FORECAST

FORECAST NO:	67	NAME OF FIRE:	Cedar Creek
PREDICTION FOR:	Monday, Oct 11, 2022	UNIT:	OR-WIF-220180
ISSUED:	1900 PDT, Oct 10, 2022	Incident Meteorologist:	Bob Tobin

*** NEAR CRITICAL WEATHER CONDITIONS THROUGH THE WEEK ***

DISCUSSION: High pressure will quickly build back into the region today and remain over the region through the extended period. This will result in a warming and drying trend the remainder of the week. This weather pattern is the perfect set-up for a dry offshore flow and very low relative humidity. Overnight recoveries on mid-slopes and ridgetops will be poor at best. This will promote active burning both day and night.

TUESDAY: OFFSHORE FLOW WITH WARM AND DRY CONDITIONS

WEATHER:	Partly to Mostly cloudy, morning fog. Afternoon clearing.	MAX TEMPS:	West: 62-72 East: 60-70
WIND (EYE LEVEL, MPH):	Sheltered areas: VRB 2-5 mph through 1200, then NE-E 5-10 mph. Ridges, unsheltered areas, wind-aligned drainages: NW-NE 5-7 mph...then E-SE 5-10 mph. 15-20 mph. East of the Crest: E-SE 5-10 mph.	MIN RH:	West: 30-40% East: 28-38%
HAINES (HIGH LEVEL):	4(Stability 2, moisture 2)	CWR:	0%
PEAK MIXING HEIGHT/WIND:	2500 ft AGL/NW 5-10 mph	Rain Amount:	0.00
INVERSION:	Moderate, mixing out after 1200	LAL:	1

TUESDAY NIGHT: POOR RECOVERIES ON RIDGES...MODERATE RECOVERIES VALLEY BOTTOMS

WEATHER:	Clear, smoke and haze.	CWR:	0%
WIND (EYE LEVEL, MPH):	Sheltered areas, mid-slopes, and valley bottoms: E-SE 5-7 mph. Ridges: SE 8-12 gusts 20-25 mph. East Side: E-SE 10-12 gust 20 mph.	Rain Amount:	0.00
MIN TEMPS:	Ridges: 45-50, Mid-slope and below: 45-50, East: 40-50.		
MAX RH:	Ridges to mid-slope: 25-30%, Mid-slope and below: 35-45%, East of the crest: 25-35%		
INVERSION:	Strong developing mid-slope after 2000.		

WEDNESDAY:

WEATHER:	Sunny, smoke and haze.	MAX TEMPS:	West: 70-80 East: 65-78
WIND (EYE LEVEL, MPH):	Sheltered areas: VRB 2-5 mph through 1000, then NW 5-7 mph. Ridges, unsheltered areas, wind-aligned drainages: E-SE 10-12 mph gusts to 20 mph...becoming NW-5-10 mph after 1400. East of the Crest: E-SE 10-12 mph gusts to 20 mph...becoming VRB 5-10 mph.	MIN RH:	West: 20-30% East: 20-30%
HAINES (HIGH LEVEL):	4 (Stability 2, moisture 2)	CWR:	0%
PEAK MIXING HEIGHT/WIND:	4,500 ft AGL/NW 5-10 mph	Rain Amount:	0.00
INVERSION:	Strong, mid-slope, mixing out after 1400	LAL:	1

EXTENDED OUTLOOK:

THURSDAY:	Sunny, smoke and haze. Highs upper 60s to around 80...Min RH 20-35%...E-SE winds 8-12 gust 20 mph...Becoming W-NW 5-10 mph after 1500.
THURSDAY:	Sunny and warm. Poor RH recoveries. Highs 70 to 80...Min RH 20-30%...E-SE winds 8-12 gust 20 mph...Becoming W-NW 5-10 mph after 1400.
FRIDAY:	Sunny and warm. Highs 72 to 82...Min RH 20-30%...E-SE winds early becoming NW 5-10 mph after 1400.

FIRE BEHAVIOR FORECAST

FORECAST NUMBER: 67	TYPE OF FIRE: Wildland Fire
FIRE NAME: Cedar Creek	OPERATIONAL PERIOD: 10/11-12/2022, 0700-0700
DATE ISSUED: 10/10/2022	TIME ISSUED: 1900
UNIT: USFS-OR-WIF	SIGNED: Don Strand, FBAN

INPUTS

WEATHER SUMMARY: Partly cloudy- Temp 72° Relative Humidity 28% (east): 30% (west) 5000 ft Winds, afternoon Easterly 5 to 10 mph with gusts 15 to 20 mph. Haines 4 (stable)

See Weather Forecast for detailed information

Fire Behavior Summary

GENERAL: Primary fuel types are TL5 and TU5. **TL5** is compact short needle conifer litter, found primarily in 2nd growth Douglas fir plantations. **TU5** is timber overstory with very high surface fuel load- short needle conifer with heavy brush and down log fuel loading in mature or old growth stands. Lichen is present across the landscape and spots readily. Timber stands with needle litter (**TL3**), dominated by Fir, Hemlock, or Lodgepole Pine. **TL8** is timber stands with needle litter dominated by Ponderosa Pine.

Fuel Type- Branch	Head ROS	Head FL	Spot Distance with gusts
Timber litter (TL5)	Up to 3 ch/hr. West	Up to 2 feet	Up to 0.2 mile
Timber understory (TU5)	Up to 6ch/hr. Both	Up to 6 feet	Up to 0.2-mile
Timber litter, short needle (TL3)	Up to 1 ch/hr. East	Up to 1 feet	Up to 0.2 mile
Timber litter, long needle (TL8)	Up to 3 ch/hr. East	Up to 3 feet	Up to 0.2 mile

Cooler with slightly higher humidity will moderate fire behavior potential as compared to the last couple of days. Live and dead fuels remain dry and available to carry fire. 1-hr and 10-hr dead fuels will see slight increase in moisture content. Continued slow fire spread in heavy surface fuels with torching and short-range spotting. Lichen reacts quickly to changes in humidity and contributes to short-range spotting. Potential still exists for short upslope runs.

Haines: 4 **LAL:** 1 **POI:** 50% **DFM:** 6-10%,
Local Thresholds for increased fire behavior on West side: 20' Wind Speed over 10 MPH, RH less than 25%, Temperature above 85 degrees, 10-hr fuel moisture less than 4%

Today's Fire Behavior

DIV A, Y: Pockets of unburned fuels will continue to consume, especially in Div. A at both ends of the division. Expect mostly smoldering and creeping and isolated torching due to heavy fuels under sheltered canopy.

DIV W, X: Expect smoldering and creeping fire spread in interior unburned islands of fuels. Potential for single tree torching. In areas with steeper slopes with heavy surface loading, potential exists for short uphill runs. Expect smoldering in compact needle litter especially in riparian areas.

DIV T: Lower rates of spread are expected today as compared to the last couple of days. Surface fire spread in heavy fuels with single and group torching. Potential for short upslope runs exists. Potential for spotting from rolling material in areas with steeper slopes. With variable wind direction, smoke drift may impact fire activity.

DIV R and P: Smoldering and creeping with isolated torching in ladder fuels, especially on south aspects with slope. With variable wind direction, smoke drift may impact fire activity.

Night Shift: Expect to see areas of visible flame in the mid to upper elevations. Chance of isolated torching. Upper elevation humidity will decrease overnight but shouldn't affect the 1-hr and 10-hr time lag fuels.

AIR OPERATIONS: Expect limited visibility due to smoke.

SAFETY

In areas with steeper slopes, potential for spotting from burning rolling debris exists.

In areas of dirty burns where heat treated ladder fuels exists, potential for rapid flare ups/reburn exist.



SAFETY MESSAGE

11-12 October 2022

INCIDENT: CEDAR CREEK

OPERATIONAL PERIOD: 0700-0700

TOPICS:



Unburned fuel exists with the indirect strategy with areas of open line. Maintain good SA of fire activity and location. Ensure lookouts are in place with positive communication. Ensure positive communications within division and adjacent divisions during firing operations. Develop trigger points for orderly retreat given the lack of safety zones. Have a plan for disengagement that establishes a designated meeting point and maintains accountability of resources.

PROPER MINDSET



A fixed mental attitude or disposition that predetermines a person's responses to and interpretations of situations. What is the Mission at Cedar Creek/Big Swamp/Potter? Our missions here are numerous, the full spectrum from suppression to repair. Resiliency and flexibility are the order of the day, with both being extremely difficult in the late season. Lean on each other to remain focused and establish a good mindset as a team to maintain an effective and safe operation.

Don't add resources to a non-plan.

SAFETY OFFICER: Troy Corn, Jack Cates

Deliberate Risk Assessment-Hazard Summary

11-12 OCT 2022

Hazard	Mitigation	Post Risk
Extraction Time	Identify medivac sites and helispots. Initiate ground transport to accident site for transport capability. Identify EMT/EMTP from resources assigned to division. Provide line qualified paramedics to each division as available. Review IWI protocol to ensure familiarity. Utilize agency and civilian medivac as treatment/timing dictates. Evaluate on-going need for repositioning medical personnel. Provide Dust abatement on Helispots as needed.	HIGH
Aircraft	Utilize Air Attack. Ensure all resources are a safe distance from all bucket and retardant drops. Establish LCES. Utilize air to ground primary for fixed wing, air to ground 2 for bucket work as needed. Reference IRPG (Safe aircraft operations pg. 61-62). Ensure IA resources have coordination with unassigned local air resources to provide deconfliction.	HIGH
Hazard Trees	Use avoidance to limit exposure time. Fall ahead to avoid exposure. Use qualified fallers or alternate methods if needed. Conduct on- going risk analysis of all work areas. Follow Hazard Tree Safety Guidelines (IRPG page 20-21).	HIGH
Heavy Equipment	Post lookouts around equipment work areas. Establish communications with equipment boss and operator. Do not work down slope from equipment. Follow agency guidelines for chipping operations.	HIGH
Physical Factors	Maintain hydration schedule. Closely monitor work rate and implement rest periods. Maintain nutrition. Ensure adequate work/rest.	MODERATE
Fire Behavior	Be aware of burn windows and weather impacts and min/max RH for flashy fuels/local conditions. Report changes to FBAN and IMET. Establish MAP for disengagement to provide for an orderly retreat given lack of safety zones. Have a plan for disengagement that establishes a designated meeting point and maintains personnel accountability.	MODERATE
Steep Terrain/Gravity	Establish LCES. Do not work crews above or below each other. Post lookouts for rolling material. Watch footing in loose soil, rock and around vegetation. Do not work below heavy equipment. Scout and identify travel routes.	MODERATE
Transportation	Coordinate with ODOT for construction windows and areas of one lane traffic along HWY58. Sign all incident roads that provide access to divisions. Provide daily updated travel plan maps. Practice defensive driving. In local communities obey the posted speed limits. Use reader boards to provide advanced warning and control entry to base camp as needed. Identify and evaluate contingency and alternate escape and travel routes. Provide dust abatement and grading as needed. Provide advanced scouting for transport access and bridge weight restrictions.	MODERATE
Unburned Fuels/Firing Ops	Establish LCES. Ensure management action points are implemented and followed. Weather updates as needed during burning operations. Locate indirect firelines to minimize unburned fuels. Follow Interagency Ignition Guide. Ensure communications between all firing operations. Establish road security at all firing sites. Follow approved firing plan for unburned fuels.	MODERATE
Environmental Factors	Assign medical personnel to camp. Assess for known allergies and report to medical personnel. Obtain Bee Bopper/wasp spray and yellow jacket traps. Maintain an awareness wildlife and poison oak. Identify and report allergies to your chain of command.	MODERATE
Communication	Evaluate for dead zones prior to engagement. Utilize human repeaters as needed. Ensure accountability of resources in problem areas. Spiking resources must have communication coverage.	LOW
Viral Transmission Mitigations, Communicable Disease	Maintain awareness of health, perform self checks, maintain social distancing, wear face coverings in accordance with CDC recommendations. Report and isolate if not feeling well. Use remote briefings, spike camps and logistical layouts that provide for social distancing as necessary. Establish liaison with Lane County Public Health.	LOW
Public Interaction	Implement area and road closures as necessary. Maintain a lookout for hunters in and out of closure areas. Maintain awareness of evacuation areas and provide accurate information dissemination.	LOW
Initial Attack	Ensure identified IA resources are briefed of expectations and ensure communication plan is provided. Ensure resources are briefed on IA command structure. Provide identified crews with area maps.	LOW

Division/Group Assignment List (ICS 204 WF)

Controlled Unclassified Information//Basic

1. Incident Name:				3.			
CEDAR CREEK				Branch: WEST		Division/Group A	
2. Operational Period: DAY							
Date/Time From: 10/11/2022 0700 TUE		Date/Time To: 10/11/2022 2000 TUE					
4. Operations Personnel							
FIELD OPERATIONS		AARON ROWE MIKE DAVIS (T)		BRANCH DIRECTOR		AARON ROWE HECTOR MEDRANO (T)	
DIVISION/GROUP SUPERVISOR		ISAAH SALSKY		AIR OPERATIONS BRANCH DIRECTOR		PAUL BALFOUR	
SAFETY OFFICER		TROY CORN JACK CATES					
5. Resources Assigned this Period							
Strike Team / Task Force / Resource Designator		LWD	Leader	Number Persons	Drop Off PT./Time	Pick Up PT./Time	
O-1054 SOF2		10/21	PAUL BRNA	1	ICP/0700	ICP/2000	
O-1008 HEQB		10/15	SETH POWELL	1	ICP/0700	ICP/2000	
E-567 ENG6 FIRST STRIKE		10/16	SPENCER BERLIER	3	ICP/0700	ICP/2000	
E-590 ENG6 DIAMOND ROAD MAINTENANCE		10/21	TYLER DWER	3	ICP/0700	ICP/2000	
E-554 WTT2 PARAGON WATER TENDERS		10/23	BILL POTTS	1	ICP/0700	ICP/2000	
E-558 EXC3 V WORKS, INC		10/14	JEREMY LINDSTROM	2	ICP/0700	ICP/2000	
O-1039 REAF		10/18	TARA INCE-JOHANNSEN (T)	1	ICP/0700	ICP/2000	
O-1060 REAF		10/16	MARK LEHNER	1	ICP/0700	ICP/2000	
S-1333 MEDIC 34		10/14	CHANDLER LEFEVER	2	ICP/0700	ICP/2000	
E-99 AMBULANCE 1		10/21	SHELBY WHITE	2	ICP/0700	ICP/2000	
8. Division/Group Communication Summary							
Function	Channel	RX Frequency N/W	RX Tone/NAC	TX Frequency N/W	TX Tone/NAC	Mode	
COMMAND	1	170.0000 N	136.5	166.6750 N	136.5	A	
COMMAND	4	171.9000 N	136.5	165.9875 N	136.5	A	
TACTICAL	8	168.6000 N	136.5	168.6000 N	136.5	A	
AIR TO GROUND	13	168.3375 N		168.3375 N		A	
AIR TO GROUND	14	169.4625 N		169.4625 N		A	
9. Prepared By (Resource Unit Leader)			Approved By (Planning Section Chief)			Date	Time
TERI PARVIN			JILL JOHNSON			10/10/2022	2000

Division/Group Assignment List (ICS 204 WF)

Controlled Unclassified Information//Basic

1. Incident Name:				3.			
CEDAR CREEK				Branch: WEST		Division/Group A	
2. Operational Period: DAY							
Date/Time From: 10/11/2022 0700 TUE		Date/Time To: 10/11/2022 2000 TUE					
4. Operations Personnel							
FIELD OPERATIONS		AARON ROWE MIKE DAVIS (T)		BRANCH DIRECTOR		AARON ROWE HECTOR MEDRANO (T)	
DIVISION/GROUP SUPERVISOR		ISAAH SALSKY		AIR OPERATIONS BRANCH DIRECTOR		PAUL BALFOUR	
SAFETY OFFICER		TROY CORN JACK CATES					
5. Resources Assigned this Period							
Strike Team / Task Force / Resource Designator		LWD	Leader	Number Persons	Drop Off PT./Time	Pick Up PT./Time	
6. Control Operations/Work Assignments:							
<p>Task: Conduct suppression repair on the 305, 310, and 750 roads. Monitor, patrol, and mop up both direct and indirect primary control lines.</p> <p>Purpose: Return roads to previous maintenance standard. Secure fire edge on the 19 and 1938 roads.</p> <p>End State: Roads are returned to pre-fire conditions. Fifty feet of mop-up complete where clean black exists.</p>							
7. Special Instructions:							
<ul style="list-style-type: none"> Be IA ready. Areas to be avoided are marked with either black/yellow or red dot on white flagging. Consult Resource Advisors if you have any questions. Backhaul all excess equipment. 							
8. Division/Group Communication Summary							
Function	Channel	RX Frequency N/W	RX Tone/NAC	TX Frequency N/W	TX Tone/NAC	Mode	
COMMAND	1	170.0000 N	136.5	166.6750 N	136.5	A	
COMMAND	4	171.9000 N	136.5	165.9875 N	136.5	A	
TACTICAL	8	168.6000 N	136.5	168.6000 N	136.5	A	
AIR TO GROUND	13	168.3375 N		168.3375 N		A	
AIR TO GROUND	14	169.4625 N		169.4625 N		A	
9. Prepared By (Resource Unit Leader)			Approved By (Planning Section Chief)			Date	Time
TERI PARVIN			JILL JOHNSON			10/10/2022	2000

Division/Group Assignment List (ICS 204 WF)
Controlled Unclassified Information//Basic

1. Incident Name:				3.		
CEDAR CREEK				Branch: WEST	Division/Group T	
2. Operational Period: DAY						
Date/Time From: 10/11/2022 0700 TUE		Date/Time To: 10/11/2022 2000 TUE				
4. Operations Personnel						
FIELD OPERATIONS		AARON ROWE MIKE DAVIS (T)		BRANCH DIRECTOR		AARON ROWE HECTOR MEDRANO (T)
DIVISION/GROUP SUPERVISOR		SAM STEINSHOUER		AIR OPERATIONS BRANCH DIRECTOR		PAUL BALFOUR
SAFETY OFFICER		TROY CORN JACK CATES				
5. Resources Assigned this Period						
Strike Team / Task Force / Resource Designator		LWD	Leader	Number Persons	Drop Off PT./Time	Pick Up PT./Time
O-1055 SOF2		10/19	MITCH WILSON	1	ICP/0700	ICP/2000
O-905 TFLD		10/12	TED PIEHL	1	ICP/0700	ICP/2000
O-983 TFLD		10/12	PAUL BASYE	1	ICP/0700	ICP/2000
O-1086 STEN		10/22	ERIC KIEHN	1	ICP/0700	ICP/2000
O-1077 FELB		10/22	MIKE HENDERSON	1	ICP/0700	ICP/2000
O-1046 FMOD PACIFIC RIDGELINE		10/18	ADAM MILLER	2	ICP/0700	ICP/2000
O-1075 FMOD TIRY TUDOR		10/21	JOSH TUDOR	1	ICP/0700	ICP/2000
O-1076 FMOD TIMBER TIPPER		10/21	BRANDON DANVILLE	2	ICP/0700	ICP/2000
O-5057 FMOD TIMBER TIPPER		10/19	GERALD FLOYD	2	ICP/0700	ICP/2000
C-123 CRW1 PLUMAS IHC		10/20	MIKE SHERMAN	18	ICP/0700	ICP/2000
C-125 CRW1 ENTIAT IHC		10/15	DANIEL PICKARD	23	ICP/0700	ICP/2000
C-126 CRW1 FEATHER RIVER IHC		10/22	MATT CLEMINS	23	ICP/0700	ICP/2000
C-120A CRW2 LOMAKSTSI ECOLOGICAL		10/21	BRAULIO MAYA	20	ICP/0700	ICP/2000
C-121 CRW2 WILL VALLEY REFORES. CREW 3		10/23	LAZARO MONTANO	20	ICP/0700	ICP/2000
C-122 CR2I SRV #12		10/22	JULIAN I JACOBO	21	ICP/0700	ICP/2000
C-127 CR2I PATRICK ENV		10/21	DUSTIN DUFFY	20	ICP/0700	ICP/2000
8. Division/Group Communication Summary						
Function	Channel	RX Frequency N/W	RX Tone/NAC	TX Frequency N/W	TX Tone/NAC	Mode
COMMAND	3	171.0625 N	136.5	162.8125 N	136.5	A
COMMAND	2	170.6875 N	136.5	166.5750 N	136.5	A
TACTICAL	9	166.7250 N	136.5	166.7250 N	136.5	A
AIR TO GROUND	13	168.3375 N		168.3375 N		A
AIR TO GROUND	14	169.4625 N		169.4625 N		A
9. Prepared By (Resource Unit Leader)			Approved By (Planning Section Chief)		Date	Time
TERI PARVIN			JILL JOHNSON		10/10/2022	2000

Division/Group Assignment List (ICS 204 WF)
Controlled Unclassified Information//Basic

1. Incident Name:				3.		
CEDAR CREEK				Branch: WEST	Division/Group T	
2. Operational Period: DAY						
Date/Time From: 10/11/2022 0700 TUE		Date/Time To: 10/11/2022 2000 TUE				
4. Operations Personnel						
FIELD OPERATIONS		AARON ROWE MIKE DAVIS (T)		BRANCH DIRECTOR		AARON ROWE HECTOR MEDRANO (T)
DIVISION/GROUP SUPERVISOR		SAM STEINSHOUER		AIR OPERATIONS BRANCH DIRECTOR		PAUL BALFOUR
SAFETY OFFICER		TROY CORN JACK CATES				
5. Resources Assigned this Period						
Strike Team / Task Force / Resource Designator		LWD	Leader	Number Persons	Drop Off PT./Time	Pick Up PT./Time
C-128 CR2I PACIFIC OASIS 14A		10/22	JASON MAZA	20	ICP/0700	ICP/2000
E-573 ENG3 CA-CNF E328		10/20	ARTHUR BUONAURO	5	ICP/0700	ICP/2000
E-592 ENG3 FIREMOG		10/21	MIKE PARENT	6	ICP/0700	ICP/2000
E-588 ENG6 MILLER TIMBER		10/22	STEVE ROBERTSON	3	ICP/0700	ICP/2000
E-569 ENG6 FRANCO REFORESTATION		10/13	HUMBERTO CHOY	3	ICP/0700	ICP/2000
E-589 ENG6 FENIX FORESTRY		10/21	SUZANNE FLYNN	3	ICP/0700	ICP/2000
E-591 ENG6 C & K WILDLAND FIRE		10/21	GREG NELSON	3	ICP/0700	ICP/2000
E-593 ENG3 J3 CONTRACTING		10/21	STEWART NICHOLS	3	ICP/0700	ICP/2000
ENG4 452 WIF MFRD (L/L)			BRIAN BRADBURY	4	ICP/0700	ICP/2000
ENG4 454 WIL MFRD (L/L)			JOHN CAROON	4	ICP/0700	ICP/2000
E-553 WTT2 COASTAL RANGE FIRE SUPPORT		10/19	SEAN BOEHLJE	1	ICP/0700	ICP/2000
E-159 WTT2 BELLOIR & SONS		10/18	ROGER BELLOIR	1	ICP/0700	ICP/2000
E-5008 WTS2 TUB SPRINGS EQUIPMENT		10/13	JOHN MACNAMEE	1	ICP/0700	ICP/2000
E-5109 WTS2 WILLOW CANYON TRUCKING		10/21	JOHN BARRETT	1	ICP/0700	ICP/2000
E-5518 WTS2 R25 ENTERPRISES		10/23	RON HAGENAUER	1	ICP/0700	ICP/2000
8. Division/Group Communication Summary						
Function	Channel	RX Frequency N/W	RX Tone/NAC	TX Frequency N/W	TX Tone/NAC	Mode
COMMAND	3	171.0625 N	136.5	162.8125 N	136.5	A
COMMAND	2	170.6875 N	136.5	166.5750 N	136.5	A
TACTICAL	9	166.7250 N	136.5	166.7250 N	136.5	A
AIR TO GROUND	13	168.3375 N		168.3375 N		A
AIR TO GROUND	14	169.4625 N		169.4625 N		A
9. Prepared By (Resource Unit Leader)			Approved By (Planning Section Chief)		Date	Time
TERI PARVIN			JILL JOHNSON		10/10/2022	2000

Division/Group Assignment List (ICS 204 WF)
Controlled Unclassified Information//Basic

1. Incident Name:				3.			
CEDAR CREEK				Branch:		Division/Group	
2. Operational Period: DAY				WEST		T	
Date/Time From: 10/11/2022 0700 TUE		Date/Time To: 10/11/2022 2000 TUE					
4. Operations Personnel							
FIELD OPERATIONS		AARON ROWE MIKE DAVIS (T)		BRANCH DIRECTOR		AARON ROWE HECTOR MEDRANO (T)	
DIVISION/GROUP SUPERVISOR		SAM STEINSHOUER		AIR OPERATIONS BRANCH DIRECTOR		PAUL BALFOUR	
SAFETY OFFICER		TROY CORN JACK CATES					
5. Resources Assigned this Period							
Strike Team / Task Force / Resource Designator			LWD	Leader	Number Persons	Drop Off PT./Time	Pick Up PT./Time
DOZ3 NEWBERRY DES NF (L/L)					1	ICP/0700	ICP/2000
E-586 DOZ3 ROBERT MURRAY			10/21	KENNY MURRAY	2	ICP/0700	ICP/2000
E-606 DZR2 BARRY BROWN INC			10/23	BARRY BROWN	2	ICP/0700	ICP/2000
E-5462 SMM1 BRINK BROTHERS INC.			10/19	MATT SAYLES	1	ICP/0700	ICP/2000
E-5238 SMM3 HACKER MACHINES			10/14	CHRIS HACKER	2	ICP/0700	ICP/2000
E-608 SKG1 MILLER TIMBER SERVICES			10/24	MARK BOND	1	ICP/0700	ICP/2000
E-570 SKD2 BREEZE BY FIRE			10/17	CALEB JOCK	2	ICP/0700	ICP/2000
E-5078 SKD2 RIM ROCK			10/11	MATTHEW PAINTER	2	ICP/0700	ICP/2000
E-5079 SKD2 STATEWIDE CONTRACT SERV			10/11	RYAN STEPP	1	ICP/0700	ICP/2000
E-355 FEL1 DUKE			10/18	JUSTIN DARSTIN	2	ICP/0700	ICP/2000
E-5019 FEL1 TJS CUTTING			10/17	AUSTIN SEEKINS	2	ICP/0700	ICP/2000
O-960 ARCH			10/11	JASON MCINTEER	1	ICP/0700	ICP/2000
O-267 REAF			09/29	BRESA MARTIN (T)	1	ICP/0700	ICP/2000
S-1334 MEDIC 35			10/17	SAVION SOLEIL	2	ICP/0700	ICP/2000
O-939.3 MEDIC ONTKO			10/16	NECOLE ONTKO (T)	1	ICP/0700	ICP/2000
8. Division/Group Communication Summary							
Function	Channel	RX Frequency N/W	RX Tone/NAC	TX Frequency N/W	TX Tone/NAC	Mode	
COMMAND	3	171.0625 N	136.5	162.8125 N	136.5	A	
COMMAND	2	170.6875 N	136.5	166.5750 N	136.5	A	
TACTICAL	9	166.7250 N	136.5	166.7250 N	136.5	A	
AIR TO GROUND	13	168.3375 N		168.3375 N		A	
AIR TO GROUND	14	169.4625 N		169.4625 N		A	
9. Prepared By (Resource Unit Leader)			Approved By (Planning Section Chief)			Date	Time
TERI PARVIN			JILL JOHNSON			10/10/2022	2000

Division/Group Assignment List (ICS 204 WF)

Controlled Unclassified Information//Basic

1. Incident Name:				3.			
CEDAR CREEK				Branch: WEST		Division/Group T	
2. Operational Period: DAY							
Date/Time From: 10/11/2022 0700 TUE		Date/Time To: 10/11/2022 2000 TUE					
4. Operations Personnel							
FIELD OPERATIONS		AARON ROWE MIKE DAVIS (T)		BRANCH DIRECTOR		AARON ROWE HECTOR MEDRANO (T)	
DIVISION/GROUP SUPERVISOR		SAM STEINSHOUER		AIR OPERATIONS BRANCH DIRECTOR		PAUL BALFOUR	
SAFETY OFFICER		TROY CORN JACK CATES					
5. Resources Assigned this Period							
Strike Team / Task Force / Resource Designator		LWD	Leader	Number Persons	Drop Off PT./Time	Pick Up PT./Time	
O-987 BLS 55		10/14	SAGE LYFORD	1	ICP/0700	ICP/2000	
E-257 AMBULANCE 3		10/17	AYALA RAHM	2	ICP/0700	ICP/2000	
6. Control Operations/Work Assignments:							
<p>Task: Continue to hold and secure control lines. Secure fire edge south of DP87 and DP89. Recon for potential control areas northwest of Fuji and Eagle Creek.</p> <p>Purpose: To protect values at risk in the community of Oakridge and Hwy 58 corridor.</p> <p>End State: Keep fire north of the Hwy 58, east of Mount David Douglas, and west of Fuji Mountain</p>							
7. Special Instructions:							
<ul style="list-style-type: none"> Be IA ready. Areas to be avoided are marked with either black/yellow or red dot on white flagging. Consult Resource Advisors if you have any questions. Backhaul all excess equipment. 							
8. Division/Group Communication Summary							
Function	Channel	RX Frequency N/W	RX Tone/NAC	TX Frequency N/W	TX Tone/NAC	Mode	
COMMAND	3	171.0625 N	136.5	162.8125 N	136.5	A	
COMMAND	2	170.6875 N	136.5	166.5750 N	136.5	A	
TACTICAL	9	166.7250 N	136.5	166.7250 N	136.5	A	
AIR TO GROUND	13	168.3375 N		168.3375 N		A	
AIR TO GROUND	14	169.4625 N		169.4625 N		A	
9. Prepared By (Resource Unit Leader)			Approved By (Planning Section Chief)			Date	Time
TERI PARVIN			JILL JOHNSON			10/10/2022	2000

Division/Group Assignment List (ICS 204 WF)

Controlled Unclassified Information//Basic

1. Incident Name:			3.			
CEDAR CREEK			Branch: WEST		Division/Group W	
2. Operational Period: DAY						
Date/Time From: 10/11/2022 0700 TUE		Date/Time To: 10/11/2022 2000 TUE				
4. Operations Personnel						
FIELD OPERATIONS		AARON ROWE MIKE DAVIS (T)		BRANCH DIRECTOR		AARON ROWE HECTOR MEDRANO (T)
DIVISION/GROUP SUPERVISOR		BOB HINDS		AIR OPERATIONS BRANCH DIRECTOR		PAUL BALFOUR
SAFETY OFFICER		TROY CORN JACK CATES				
5. Resources Assigned this Period						
Strike Team / Task Force / Resource Designator		LWD	Leader	Number Persons	Drop Off PT./Time	Pick Up PT./Time
O-1054 SOF2		10/21	PAUL BRNA	1	ICP/0700	ICP/2000
O-984 TFLD		10/12	DREW DINGMANN	1	ICP/0700	ICP/2000
E-576 ENG6 J.C. OROZCO		10/19	JAVIER OROZCO	3	ICP/0700	ICP/2000
E-587 ENG6 C & R REFORESTATION		10/21	JAY FLORA	3	ICP/0700	ICP/2000
O-1080 REAF		10/24	RYAN MURDOFF	1	ICP/0700	ICP/2000
O-1031 THSP		10/15	JUSTIN GEERTSEN	1	ICP/0700	ICP/2000
S-279 REMS 1		10/21	TIM MCDANIEL	4	ICP/0700	ICP/2000
6. Control Operations/Work Assignments:						
<p>Task: Continue to secure control lines.</p> <p>Purpose: To protect values at risk in community of Oakridge and HWY 58.</p> <p>End State: Keep fire north of railroad and the 352 and 353 roads.</p>						
7. Special Instructions:						
<ul style="list-style-type: none"> • Be IA ready • Areas to be avoided are marked with either black/yellow or red dot on white flagging. • Consult Resource Advisors if you have any questions. • Backhaul all excess equipment. 						
8. Division/Group Communication Summary						
Function	Channel	RX Frequency N/W	RX Tone/NAC	TX Frequency N/W	TX Tone/NAC	Mode
COMMAND	2	170.6875 N	136.5	166.5750 N	136.5	A
TACTICAL	10	166.7750 N	136.5	166.7750 N	136.5	A
AIR TO GROUND	13	168.3375 N		168.3375 N		A
AIR TO GROUND	14	169.4625 N		169.4625 N		A
9. Prepared By (Resource Unit Leader)			Approved By (Planning Section Chief)		Date	Time
TERI PARVIN			JILL JOHNSON		10/10/2022	2000

Division/Group Assignment List (ICS 204 WF)
Controlled Unclassified Information//Basic

1. Incident Name:				3.		
CEDAR CREEK				Branch: WEST	Division/Group X	
2. Operational Period: DAY						
Date/Time From: 10/11/2022 0700 TUE		Date/Time To: 10/11/2022 2000 TUE				
4. Operations Personnel						
FIELD OPERATIONS		AARON ROWE MIKE DAVIS (T)		BRANCH DIRECTOR		AARON ROWE HECTOR MEDRANO (T)
DIVISION/GROUP SUPERVISOR		DENNIS MAWHINNEY		AIR OPERATIONS BRANCH DIRECTOR		PAUL BALFOUR
SAFETY OFFICER		TROY CORN JACK CATES				
5. Resources Assigned this Period						
Strike Team / Task Force / Resource Designator		LWD	Leader	Number Persons	Drop Off PT./Time	Pick Up PT./Time
O-1054 SOF2		10/21	PAUL BRNA	1	ICP/0700	ICP/2000
O-1021 TFLD		10/18	COLIN GUNDLE	1	ICP/0700	ICP/2000
O-1036 TFLD (T)		10/18	MICHAEL GREGORY	1	ICP/0700	ICP/2000
O-982 HEQB		10/13	TOBY BAKOS	1	ICP/0700	ICP/2000
O-1006 HEQB (T)		10/14	DAN O'NEAL	1	ICP/0700	ICP/2000
O-1038 HEQB (T)		10/17	STUART SMITH-BLOCKLEY	1	ICP/0700	ICP/2000
O-841 FMOD TIMBER TIPPER		10/30	SKYLAR GARDNER	2	ICP/0700	ICP/2000
C-120B CRW2 LOMAKSTSI ECOLOGICAL		10/21	BRAUILO MAYA	20	ICP/0700	ICP/2000
C-5033 CRW2 PACIFIC OASIS 6		10/13	GEOFFERY ANDERSON	20	ICP/0700	ICP/2000
E-566 ENG6 NORTH PACIFIC FORESTRY		10/17	COLLIN FICCADENTI	3	ICP/0700	ICP/2000
E-568 ENG6 FIRST STRIKE #19		10/16	GERALD COATS	3	ICP/0700	ICP/2000
E-575 ENG6 J.C. OROZCO		10/19	SCOTT HANEY	3	ICP/0700	ICP/2000
E-594 ENG3 OUTBACK FIREFIGHTING		10/23	CHUCK MCCONNELL	3	ICP/0700	ICP/2000
E-559 EXC3 OWENS FREIGHT LINES		10/14	LEVI HARDWICK	2	ICP/0700	ICP/2000
E-580 EXC3 OWENS FREIGHT LINES		10/21	RANDY HUSTED	2	ICP/0700	ICP/2000
8. Division/Group Communication Summary						
Function	Channel	RX Frequency N/W	RX Tone/NAC	TX Frequency N/W	TX Tone/NAC	Mode
COMMAND	2	170.6875 N	136.5	166.5750 N	136.5	A
TACTICAL	11	168.2500 N	136.5	168.2500 N	136.5	A
AIR TO GROUND	13	168.3375 N		168.3375 N		A
AIR TO GROUND	14	169.4625 N		169.4625 N		A
9. Prepared By (Resource Unit Leader)			Approved By (Planning Section Chief)		Date	Time
TERI PARVIN			JILL JOHNSON		10/10/2022	2000

Division/Group Assignment List (ICS 204 WF)
Controlled Unclassified Information//Basic

1. Incident Name:			3.			
CEDAR CREEK			Branch:		Division/Group	
2. Operational Period: DAY			WEST		X	
Date/Time From: 10/11/2022 0700 TUE	Date/Time To: 10/11/2022 2000 TUE					
4. Operations Personnel						
FIELD OPERATIONS		AARON ROWE MIKE DAVIS (T)		BRANCH DIRECTOR		AARON ROWE HECTOR MEDRANO (T)
DIVISION/GROUP SUPERVISOR		DENNIS MAWHINNEY		AIR OPERATIONS BRANCH DIRECTOR		PAUL BALFOUR
SAFETY OFFICER		TROY CORN JACK CATES				
5. Resources Assigned this Period						
Strike Team / Task Force / Resource Designator		LWD	Leader	Number Persons	Drop Off PT./Time	Pick Up PT./Time
E-321 CHSL ATLAS		10/16	JILLIAN FALGE	2	ICP/0700	ICP/2000
O-390 REAF		10/11	THOMAS DAVIS	1	ICP/0700	ICP/2000
O-1103 REAF		10/24	MARK RICHARDSON	1	ICP/0700	ICP/2000
S-1127 RAT 2		10/20	ROBERT ABERLE	2	ICP/0700	ICP/2000
6. Control Operations/Work Assignments:						
<p>Task: Hold and secure control line. Purpose: To protect values at risk in community of Oakridge. End State: Keep fire North of 58 road and east of the 5871 road.</p>						
7. Special Instructions:						
<ul style="list-style-type: none"> • Be IA ready • Areas to be avoided are marked with either black/yellow or red dot on white flagging. • Consult Resource Advisors if you have any questions. • Backhaul all excess equipment. 						
8. Division/Group Communication Summary						
Function	Channel	RX Frequency N/W	RX Tone/NAC	TX Frequency N/W	TX Tone/NAC	Mode
COMMAND	2	170.6875 N	136.5	166.5750 N	136.5	A
TACTICAL	11	168.2500 N	136.5	168.2500 N	136.5	A
AIR TO GROUND	13	168.3375 N		168.3375 N		A
AIR TO GROUND	14	169.4625 N		169.4625 N		A
9. Prepared By (Resource Unit Leader)			Approved By (Planning Section Chief)		Date	Time
TERI PARVIN			JILL JOHNSON		10/10/2022	2000

Division/Group Assignment List (ICS 204 WF)
Controlled Unclassified Information//Basic

1. Incident Name:				3.		
CEDAR CREEK				Branch: WEST	Division/Group Y	
2. Operational Period: DAY						
Date/Time From: 10/11/2022 0700 TUE		Date/Time To: 10/11/2022 2000 TUE				
4. Operations Personnel						
FIELD OPERATIONS	AARON ROWE MIKE DAVIS (T)			BRANCH DIRECTOR	AARON ROWE HECTOR MEDRANO (T)	
DIVISION/GROUP SUPERVISOR	ANDREW SCHAFFFRAN			AIR OPERATIONS BRANCH DIRECTOR	PAUL BALFOUR	
SAFETY OFFICER	TROY CORN JACK CATES					
5. Resources Assigned this Period						
Strike Team / Task Force / Resource Designator	LWD	Leader	Number Persons	Drop Off PT./Time	Pick Up PT./Time	
O-1054 SOF2	10/21	PAUL BRNA	1	ICP/0700	ICP/2000	
O-1028 TFLD	10/17	DAVID MAYNARD	1	ICP/0700	ICP/2000	
O-1022 HEQB	10/19	KYLE CRANMER	1	ICP/0700	ICP/2000	
O-1029 HEQB (T)	10/17	ETHAN CAMARENA	1	ICP/0700	ICP/2000	
O-868 FMOD PACIFIC RIDGELINE	10/15	SAM HOLSTAD	2	ICP/0700	ICP/2000	
O-1045 FMOD GOODSON LOGGING	10/18	NATHANIEL ZELLER	2	ICP/0700	ICP/2000	
E-596 ENG3 TORRES CONTRACTING	10/20	CHAD CORWIN	3	ICP/0700	ICP/2000	
E-571 EXC3 MARK JONES TRUCKING	10/18	CHAD BROWN	2	ICP/0700	ICP/2000	
E-5077 SKD2 HOFBAUER	10/25	ALEX HOMER	2	ICP/0700	ICP/2000	
E-395 FEL2 MILLER TIMBER	10/12	TREVEN OAKES	1	ICP/0700	ICP/2000	
E-5358 FEL2 IDAHO WEST LLC	10/27	RUSS GRANT	2	ICP/0700	ICP/2000	
O-1013 REAF	10/14	CHRIS MARTIN	1	ICP/0700	ICP/2000	
O-1025 REAF	10/17	ADAM BUCHER	1	ICP/0700	ICP/2000	
S-5428 REMS 12	10/13	MARCOS GARCIA	4	ICP/0700	ICP/2000	
8. Division/Group Communication Summary						
Function	Channel	RX Frequency N/W	RX Tone/NAC	TX Frequency N/W	TX Tone/NAC	Mode
COMMAND	1	170.0000 N	136.5	166.6750 N	136.5	A
TACTICAL	12	171.1125 N	136.5	171.1125 N	136.5	A
AIR TO GROUND	13	168.3375 N		168.3375 N		A
AIR TO GROUND	14	169.4625 N		169.4625 N		A
9. Prepared By (Resource Unit Leader)		Approved By (Planning Section Chief)		Date	Time	
TERI PARVIN		JILL JOHNSON		10/10/2022	2000	

Division/Group Assignment List (ICS 204 WF)
Controlled Unclassified Information//Basic

1. Incident Name:			3.			
CEDAR CREEK			Branch:		Division/Group	
2. Operational Period: DAY			WEST		Y	
Date/Time From: 10/11/2022 0700 TUE	Date/Time To: 10/11/2022 2000 TUE					
4. Operations Personnel						
FIELD OPERATIONS		AARON ROWE MIKE DAVIS (T)		BRANCH DIRECTOR		AARON ROWE HECTOR MEDRANO (T)
DIVISION/GROUP SUPERVISOR		ANDREW SCHAFFFRAN		AIR OPERATIONS BRANCH DIRECTOR		PAUL BALFOUR
SAFETY OFFICER		TROY CORN JACK CATES				
5. Resources Assigned this Period						
Strike Team / Task Force / Resource Designator		LWD	Leader	Number Persons	Drop Off PT./Time	Pick Up PT./Time
E-5405 AMBULANCE 7		10/18	ALVIN HORN	2	ICP/0700	ICP/2000
6. Control Operations/Work Assignments:						
<p>Task: Secure perimeter along FS road 2409. Purpose: To protect values at risk in the community of Oakridge and High Prairie. End State: Fire remains inside current containment lines.</p>						
7. Special Instructions:						
<ul style="list-style-type: none"> • Be IA ready. • Areas to be avoided are marked with either black/yellow or red dot on white flagging. • Consult Resource Advisors if you have any questions. • Backhaul all excess equipment. <p>For interior USFS 24 road system</p> <ul style="list-style-type: none"> • Limit the number of resources that are used to only what is necessary and remain in the area only as long as needed. • Fell immediate hazards, leave trees in place unless you must get them off the roadway. • Evaluate winds during site operations and shut down operations when 20-foot winds exceed 10 mph. • Shut down operations if participation of 1.5 inches in 24 hours over a 48-hour period occurs. • Utilized local hazard tree experts to properly evaluate trees that need to be felled. 						
8. Division/Group Communication Summary						
Function	Channel	RX Frequency N/W	RX Tone/NAC	TX Frequency N/W	TX Tone/NAC	Mode
COMMAND	1	170.0000 N	136.5	166.6750 N	136.5	A
TACTICAL	12	171.1125 N	136.5	171.1125 N	136.5	A
AIR TO GROUND	13	168.3375 N		168.3375 N		A
AIR TO GROUND	14	169.4625 N		169.4625 N		A
9. Prepared By (Resource Unit Leader)			Approved By (Planning Section Chief)		Date	Time
TERI PARVIN			JILL JOHNSON		10/10/2022	2000

Division/Group Assignment List (ICS 204 WF)
Controlled Unclassified Information//Basic

1. Incident Name:				3.		
CEDAR CREEK				Branch:	Division/Group P	
2. Operational Period: DAY						
Date/Time From: 10/11/2022 0700 TUE		Date/Time To: 10/11/2022 2000 TUE				
4. Operations Personnel						
FIELD OPERATIONS		AARON ROWE MIKE DAVIS (T)		DIVISION/GROUP SUPERVISOR		JOE HARRIS
AIR OPERATIONS BRANCH DIRECTOR		PAUL BALFOUR		SAFETY OFFICER		TROY CORN JACK CATES
5. Resources Assigned this Period						
Strike Team / Task Force / Resource Designator		LWD	Leader	Number Persons	Drop Off PT./Time	Pick Up PT./Time
O-1114 SOFR		10/23	ALEC MCAFFEE	1	JUNCTION CAMP/0700	JUNCTION CAMP/2000
O-5338 TFLD		10/13	ERIC BADER	1	JUNCTION CAMP/0700	JUNCTION CAMP/2000
O-5408 TFLD		10/13	PAUL MANCUSO	1	JUNCTION CAMP/0700	JUNCTION CAMP/2000
C-5037 CRW2 MR CONTRACTING CREW 1		10/11	TOMAS GUZMAN	20	JUNCTION CAMP/0700	JUNCTION CAMP/2000
C-5038 CRW2 TABLE ROCK FORESTRY		10/11	TOMAS GOMEZ	20	JUNCTION CAMP/0700	JUNCTION CAMP/2000
E-574 ENG6 OR-MAF 44		10/19	MITCHELL FORTE	4	JUNCTION CAMP/0700	JUNCTION CAMP/2000
E-595 ENG3 ENG3 FIREMOG		10/21	KEVIN STULTZ	6	JUNCTION CAMP/0700	JUNCTION CAMP/2000
E-5522 ENG6 RUE FOREST CONTRACTING		10/12	ANTHONY CUNIAL	3	JUNCTION CAMP/0700	JUNCTION CAMP/2000
E-5007 WTS2 PATRICK HUGHES TRUCKING		10/12	GARY HUGHES	1	JUNCTION CAMP/0700	JUNCTION CAMP/2000
E-383 CHSL ATLAS TREE		10/25	CHAD LATHEM	2	R&R 10/11-12/	
E-5371 CHP2 HI COUNTRY		10/15	JOHN CONGER	3	JUNCTION CAMP/0700	JUNCTION CAMP/2000
E-5527 CHSL MILLER TIMBER		10/21	BRIAN TAYLOR	2	JUNCTION CAMP/0700	JUNCTION CAMP/2000
O-5403 REAF		10/14	JEFF JACKSON	1	JUNCTION CAMP/0700	JUNCTION CAMP/2000
O-5412 REAF (T)		10/11	WESLEY BURTON	1	JUNCTION CAMP/0700	JUNCTION CAMP/2000
8. Division/Group Communication Summary						
Function	Channel	RX Frequency N/W	RX Tone/NAC	TX Frequency N/W	TX Tone/NAC	Mode
COMMAND	4	171.9000 N	136.5	165.9875 N	136.5	A
COMMAND	5	170.0125 N	136.5	165.2500 N	136.5	A
TACTICAL	12	171.1125 N	136.5	171.1125 N	136.5	A
AIR TO GROUND	13	168.3375 N		168.3375 N		A
AIR TO GROUND	14	169.4625 N		169.4625 N		A
9. Prepared By (Resource Unit Leader)			Approved By (Planning Section Chief)		Date	Time
TERI PARVIN			JILL JOHNSON		10/10/2022	2000

Division/Group Assignment List (ICS 204 WF)
Controlled Unclassified Information//Basic

1. Incident Name:			3.			
CEDAR CREEK			Branch:		Division/Group	
2. Operational Period: DAY			P			
Date/Time From: 10/11/2022 0700 TUE		Date/Time To: 10/11/2022 2000 TUE				
4. Operations Personnel						
FIELD OPERATIONS		AARON ROWE MIKE DAVIS (T)		DIVISION/GROUP SUPERVISOR		JOE HARRIS
AIR OPERATIONS BRANCH DIRECTOR		PAUL BALFOUR		SAFETY OFFICER		TROY CORN JACK CATES
5. Resources Assigned this Period						
Strike Team / Task Force / Resource Designator		LWD	Leader	Number Persons	Drop Off PT./Time	Pick Up PT./Time
REAF		10/24	CASEY SCHUDER	1	JUNCTION CAMP/0700	JUNCTION CAMP/2000
S-449 MEDIC 7		10/16	FISHER / HAVER	2	JUNCTION CAMP/0700	JUNCTION CAMP/2000
S-5052 MEDIC 3		10/14	BRODZIK / JASPER	2	JUNCTION CAMP/0700	JUNCTION CAMP/2000
E-5465 AMBULANCE 9		10/18	SANDS / BENETT	2	JUNCTION CAMP/0700	JUNCTION CAMP/2000
6. Control Operations/Work Assignments:						
<p>Task: Conduct suppression repair and keep the fire north of the 4290 road.</p> <p>Purpose: Protect values at risk on the east side of Waldo Lake while minimizing additional resource damage.</p> <p>End State: Control lines are repaired to suppression repair standards while minimizing the threat of the fire to values at risk.</p>						
7. Special Instructions:						
Waldo Lake should not be used as a water source.						
Continue Repair work:						
<ul style="list-style-type: none"> • Repair handlines • Repair machine lines • Pull slash • Recon and scout if other repair work is needed 						
8. Division/Group Communication Summary						
Function	Channel	RX Frequency N/W	RX Tone/NAC	TX Frequency N/W	TX Tone/NAC	Mode
COMMAND	4	171.9000 N	136.5	165.9875 N	136.5	A
COMMAND	5	170.0125 N	136.5	165.2500 N	136.5	A
TACTICAL	12	171.1125 N	136.5	171.1125 N	136.5	A
AIR TO GROUND	13	168.3375 N		168.3375 N		A
AIR TO GROUND	14	169.4625 N		169.4625 N		A
9. Prepared By (Resource Unit Leader)			Approved By (Planning Section Chief)		Date	Time
TERI PARVIN			JILL JOHNSON		10/10/2022	2000

Division/Group Assignment List (ICS 204 WF)
Controlled Unclassified Information//Basic

1. Incident Name:				3.		
CEDAR CREEK				Branch:	Division/Group R	
2. Operational Period: DAY						
Date/Time From: 10/11/2022 0700 TUE		Date/Time To: 10/11/2022 2000 TUE				
4. Operations Personnel						
FIELD OPERATIONS		AARON ROWE MIKE DAVIS (T)		DIVISION/GROUP SUPERVISOR		JEREMY KOLAKS
AIR OPERATIONS BRANCH DIRECTOR		PAUL BALFOUR		SAFETY OFFICER		TROY CORN JACK CATES
5. Resources Assigned this Period						
Strike Team / Task Force / Resource Designator		LWD	Leader	Number Persons	Drop Off PT./Time	Pick Up PT./Time
O-1037.61 SOFR		10/21	PHIL GRAHAM	1	JUNCTION CAMP/0700	JUNCTION CAMP/2000
O-963 TFLD		10/11	JEREMY D BRYANT	1	JUNCTION CAMP/0700	JUNCTION CAMP/2000
O-5407 TFLD		10/11	KADELL DEASON	1	JUNCTION CAMP/0700	JUNCTION CAMP/2000
O-5409 TFLD		10/13	JUSTEN JOHANSEN	1	JUNCTION CAMP/0700	JUNCTION CAMP/2000
O-5414 TFLD		10/14	KYLE THATCHER (T)	1	JUNCTION CAMP/0700	JUNCTION CAMP/2000
O-5398 HEQB		10/11	RODNEY KENYON (T)	1	JUNCTION CAMP/0700	JUNCTION CAMP/2000
O-5410 HEQB		10/14	SETH GREENE	1	JUNCTION CAMP/0700	JUNCTION CAMP/2000
C-5034 CRW2 PACIFIC OASIS 10		10/16	DONTE MARQUEZ	20	JUNCTION CAMP/0700	JUNCTION CAMP/2000
E-5163 WTT2 PIERCE FIRE		10/15	ZACK SCHWEMER	2	JUNCTION CAMP/0700	JUNCTION CAMP/2000
E-5230 WTS2 K & R CONTRACTING, LLC		10/24	RAMA WOOD	1	JUNCTION CAMP/0700	JUNCTION CAMP/2000
E-5231 WTS2 TABLE MOUNTAIN		10/26	TOM WHITING	1	JUNCTION CAMP/0700	JUNCTION CAMP/2000
E-5519 WTS2 CLAY'S FAB & REPAIR		10/12	CLAY ALVERNAZ	1	JUNCTION CAMP/0700	JUNCTION CAMP/2000
E-5520 WTS2 MILLER TIMBER		10/16	WAYNE ENGESETH	1	JUNCTION CAMP/0700	JUNCTION CAMP/2000
E-5376 GRD2 TABLE MOUNTAIN FORESTRY		10/26	FRANCIS READY	2	JUNCTION CAMP/0700	JUNCTION CAMP/2000
E-341 EXC2 HATFIELD TRUCKING		10/20	TODD WISBEY	2	JUNCTION CAMP/0700	JUNCTION CAMP/2000
8. Division/Group Communication Summary						
Function	Channel	RX Frequency N/W	RX Tone/NAC	TX Frequency N/W	TX Tone/NAC	Mode
COMMAND	3	171.0625 N	136.5	162.8125 N	136.5	A
COMMAND	5	170.0125 N	136.5	165.2500 N	136.5	A
TACTICAL	8	168.6000 N	136.5	168.6000 N	136.5	A
AIR TO GROUND	13	168.3375 N		168.3375 N		A
AIR TO GROUND	14	169.4625 N		169.4625 N		A
9. Prepared By (Resource Unit Leader)			Approved By (Planning Section Chief)		Date	Time
TERI PARVIN			JILL JOHNSON		10/10/2022	2000

Division/Group Assignment List (ICS 204 WF)
Controlled Unclassified Information//Basic

1. Incident Name:				3.			
CEDAR CREEK				Branch:		Division/Group	
2. Operational Period: DAY				R			
Date/Time From: 10/11/2022 0700 TUE		Date/Time To: 10/11/2022 2000 TUE					
4. Operations Personnel							
FIELD OPERATIONS		AARON ROWE MIKE DAVIS (T)		DIVISION/GROUP SUPERVISOR		JEREMY KOLAKS	
AIR OPERATIONS BRANCH DIRECTOR		PAUL BALFOUR		SAFETY OFFICER		TROY CORN JACK CATES	
5. Resources Assigned this Period							
Strike Team / Task Force / Resource Designator		LWD	Leader	Number Persons	Drop Off PT./Time	Pick Up PT./Time	
E-5458 EXC2 SANTUCCI RANCH TURF LLC		10/25	CABE GOEHRING	2	JUNCTION CAMP/0700	JUNCTION CAMP/2000	
E-5501 EXC2 OWENS FREIGHT		10/21	TALON COLLINS	2	JUNCTION CAMP/0700	JUNCTION CAMP/2000	
E-5502 EXC2 OWENS FREIGHT LINES		10/23	JOHN WAMPLER	2	JUNCTION CAMP/0700	JUNCTION CAMP/2000	
E-552 VROL SCOTT MARSHALL		10/24	FRANK HAYES	2	JUNCTION CAMP/0700	JUNCTION CAMP/2000	
E-5275 DUMP BAR SEVEN		10/11	STEPHEN FIELDS	1	JUNCTION CAMP/0700	JUNCTION CAMP/2000	
E-5505 DUMP IDAHO WEST		10/11	CHARLES SHIELDS	1	JUNCTION CAMP/0700	JUNCTION CAMP/2000	
O-1059 REAF		10/18	JASON BERNARDS	1	JUNCTION CAMP/0700	JUNCTION CAMP/2000	
S-5049 MEDIC 1		10/12	CROWE / VANIS	2	JUNCTION CAMP/0700	JUNCTION CAMP/2000	
S-5051 MEDIC 2		10/20	LAPEARL / LAWLER	2	JUNCTION CAMP/0700	JUNCTION CAMP/2000	
E-5115 AMBULANCE 6		10/17	NEWMAN / MCDONNELL	2	JUNCTION CAMP/0700	JUNCTION CAMP/2000	
6. Control Operations/Work Assignments:							
<p>Task: Continue shaded fuel break on roads 4668, 4660, and Hwy 46 to specifications by the local unit to ensure fire stays west of these road systems. Repair as appropriate for projected stage of fire suppression.</p> <p>Purpose: Protect values at risk at Twin Lakes Lodge, Wickiup Reservoir, Davis Lake, and the community of Crescent.</p> <p>End State: Fire remains inside current containment lines, and resource values are protected.</p>							
7. Special Instructions:							
Waldo Lake should not be used as a water source.							
8. Division/Group Communication Summary							
Function	Channel	RX Frequency N/W	RX Tone/NAC	TX Frequency N/W	TX Tone/NAC	Mode	
COMMAND	3	171.0625 N	136.5	162.8125 N	136.5	A	
COMMAND	5	170.0125 N	136.5	165.2500 N	136.5	A	
TACTICAL	8	168.6000 N	136.5	168.6000 N	136.5	A	
AIR TO GROUND	13	168.3375 N		168.3375 N		A	
AIR TO GROUND	14	169.4625 N		169.4625 N		A	
9. Prepared By (Resource Unit Leader)			Approved By (Planning Section Chief)			Date	Time
TERI PARVIN			JILL JOHNSON			10/10/2022	2000

Division/Group Assignment List (ICS 204 WF)
Controlled Unclassified Information//Basic

1. Incident Name:			3.			
CEDAR CREEK			Branch:		Division/Group	
2. Operational Period: DAY			POTTER-SWAMP			
Date/Time From: 10/11/2022 0700 TUE		Date/Time To: 10/11/2022 2000 TUE				
4. Operations Personnel						
FIELD OPERATIONS		AARON ROWE MIKE DAVIS (T)		DIVISION/GROUP SUPERVISOR		QUINLAN ANDERSON
AIR OPERATIONS BRANCH DIRECTOR		PAUL BALFOUR		SAFETY OFFICER		TROY CORN JACK CATES
5. Resources Assigned this Period						
Strike Team / Task Force / Resource Designator		LWD	Leader	Number Persons	Drop Off PT./Time	Pick Up PT./Time
HEQB (L/L)			JAIME MARISCAL	1	ICP/0700	ICP/2000
HEQB (T) (L/L)			ADAM VROON	1	ICP/0700	ICP/2000
C2IA WIL HAND CREW #501 (L/L)			JESUS SARAZ	16	ICP/0700	ICP/2000
E-561 EXC2 JERRY SWEARINGEN CONSTRUCTION		10/17	JERRY SWEARINGEN	2	ICP/0700	ICP/2000
E-582 EXC2 ROBERT MURRAY		10/21	CHARLOTTE KAME	1	ICP/0700	ICP/2000
E-563 DUMP LEE ROY BELLOIR & SONS		10/17	LEE ROY BELLOIR	1	ICP/0700	ICP/2000
E-564 DUMP RUSSELS MGNT SERVICES		10/19	WILLY AUSTIN	1	ICP/0700	ICP/2000
E-176 AMBU2		10/24	JARED GRISSOM	2	ICP/0700	ICP/2000
6. Control Operations/Work Assignments:						
Task: Continue suppression repair work. Purpose: Maintain the integrity of infrastructure and protect natural resources. End State: Return roads and suppression control features to pre-fire conditions per the Willamette NF suppression repair guidelines.						
7. Special Instructions:						
8. Division/Group Communication Summary						
Function	Channel	RX Frequency N/W	RX Tone/NAC	TX Frequency N/W	TX Tone/NAC	Mode
COMMAND	6	170.2625 N	136.5	165.8125 N	136.5	A
COMMAND	7	170.4625 N	103.5	164.8250 N	103.5	A
TACTICAL	11	168.2500 N	136.5	168.2500 N	136.5	A
AIR TO GROUND	13	168.3375 N		168.3375 N		A
AIR TO GROUND	14	169.4625 N		169.4625 N		A
9. Prepared By (Resource Unit Leader)			Approved By (Planning Section Chief)		Date	Time
TERI PARVIN			JILL JOHNSON		10/10/2022	2000

Division/Group Assignment List (ICS 204 WF)

Controlled Unclassified Information//Basic

1. Incident Name:			3.			
CEDAR CREEK			Branch:	Division/Group STAGING		
2. Operational Period: DAY						
Date/Time From: 10/11/2022 0700 TUE		Date/Time To: 10/11/2022 2000 TUE				
4. Operations Personnel						
FIELD OPERATIONS		AARON ROWE MIKE DAVIS (T)		DIVISION/GROUP SUPERVISOR		
AIR OPERATIONS BRANCH DIRECTOR		PAUL BALFOUR		SAFETY OFFICER		TROY CORN JACK CATES
5. Resources Assigned this Period						
Strike Team / Task Force / Resource Designator		LWD	Leader	Number Persons	Drop Off PT./Time	Pick Up PT./Time
E-487 CHSL ATLAS (R&R 10/10 & 10/11)		10/25	JASON MARTIN	2	STAGING AREA/0700	STAGING AREA/2000
E-551 GRD2 STATEWIDE CONTRACT SERVICES		10/24	PAUL BRUINGTON	2	STAGING AREA/0700	STAGING AREA/2000
E-581 EXC3 HUGHES, PATRICK		10/21	PATRICK HUGHES	2	STAGING AREA/0700	STAGING AREA/2000
6. Control Operations/Work Assignments:						
Park in Staging area for next assignment or instructions.						
7. Special Instructions:						
8. Division/Group Communication Summary						
Function	Channel	RX Frequency N/W	RX Tone/NAC	TX Frequency N/W	TX Tone/NAC	Mode
COMMAND	2	170.6875 N	136.5	166.5750 N	136.5	A
TACTICAL	8	168.6000 N	136.5	168.6000 N	136.5	A
AIR TO GROUND	13	168.3375 N		168.3375 N		A
AIR TO GROUND	14	169.4625 N		169.4625 N		A
9. Prepared By (Resource Unit Leader)			Approved By (Planning Section Chief)		Date	Time
TERI PARVIN			JILL JOHNSON		10/10/2022	2000

Division/Group Assignment List (ICS 204 WF)
Controlled Unclassified Information//Basic

1. Incident Name:				3.		
CEDAR CREEK				Branch:	Division/Group	
2. Operational Period: NIGHT						
Date/Time From: 10/11/2022 1730 TUE		Date/Time To: 10/12/2022 0700 WED		NIGHT		
4. Operations Personnel						
FIELD OPERATIONS		AARON ROWE MIKE DAVIS (T)		DIVISION/GROUP SUPERVISOR		MICHAEL SCHINSTOCK
AIR OPERATIONS BRANCH DIRECTOR		PAUL BALFOUR		SAFETY OFFICER		TROY CORN JACK CATES
5. Resources Assigned this Period						
Strike Team / Task Force / Resource Designator		LWD	Leader	Number Persons	Drop Off PT./Time	Pick Up PT./Time
E-5058 ENG6 DB JET ENTERPRISES		10/11	MAT BLEDSOE	3	ICP/1730	ICP/0700
6. Control Operations/Work Assignments:						
<p>Task: Monitor fire on highway 58 corridor and DIVS T. Purpose: Provide intelligence on fire movement and location to day shift resources. End State: Day DIVS T is informed on fire location prior to engaging resources.</p>						
7. Special Instructions:						
8. Division/Group Communication Summary						
Function	Channel	RX Frequency N/W	RX Tone/NAC	TX Frequency N/W	TX Tone/NAC	Mode
COMMAND	1	170.0000 N	136.5	166.6750 N	136.5	A
COMMAND	2	170.6875 N	136.5	166.5750 N	136.5	A
COMMAND	3	171.0625 N	136.5	162.8125 N	136.5	A
COMMAND	4	171.9000 N	136.5	165.9875 N	136.5	A
COMMAND	5	170.0125 N	136.5	165.2500 N	136.5	A
TACTICAL	12	171.1125 N	136.5	171.1125 N	136.5	A
9. Prepared By (Resource Unit Leader)			Approved By (Planning Section Chief)		Date	Time
TERI PARVIN			JILL JOHNSON		10/10/2022	1310

Controlled Unclassified Information/Basic

AIR OPERATIONS SUMMARY CEDAR CREEK	Prepared By: Paul Balfour AOBD	Prepared: 10/10/2022	Prepared Time: 1800 hrs.		
	2. OPERATIONAL PERIOD 10/11/2022	START TIME: 0700	END TIME: 1800	SUNRISE: 0718	SUNSET: 1834

<p>HIGH, SHIFTING, ERRATIC WINDS WILL AFFECT AIRCRAFT PERFORMANCE AND AVAILABILITY.</p> <p>TRACK WATER SOURCE USE ON COST SUMMARIES FOR EACH HELICOPTER.</p> <p>*LEND/LEASE TO NEW IA OUTSIDE THE DELEGATION *</p> <p>REQUEST FOR AERIAL DELIVERY OF LINE ORDERS THROUGH <u>COMMUNICATIONS</u>.</p> <p>REQUEST FOR AA OR HELICOPTERS THROUGH <u>HELIBASE ON COMMAND</u></p> <p>SCHEDULE FLIGHTS AT EARLIEST POSSIBLE TIME THROUGH 503-551-3973</p>	<p>4. MEDICAL A/C:</p> <p>Short Haul Helicopter Located in Sunriver</p> <p>Follow IWI protocols in case of an emergency.</p>	<p>TFR 2/2874 (A-164)</p> <p>Freq. 126.5250</p> <p>Ceiling 11,000 MSL</p> <p>0700-2400</p> <p>[Check FAA Website for Updates]</p>
--	---	---

6. PERSONNEL	NAME	PHONE #	7. FREQUENCIES	AM	FM	8. FIXED-WING Avail/ Type/ Make-Model/ N#/ Base
AOBD	Paul Balfour	509-993-8739	A/A TFR	126.5250		ATGS Platforms: Available as needed from Pool
ASGS	Albert Faria	907-419-5415	A/A (Fixed Wing) A-28	132.4750		
ASGS(t)	Dan Sebern	970-210-1798	A/A (Rotor Wing) A-53	120.0250		
ATGS (Pool)	Amanda Hickman	541-892-0854				Airtankers: Order thru ATGS UAS – UR-31/32 (A-171) Ed Yue 304-906-9065
ATGS (Pool)	Justin Wood	541-420-2890	A/G West Primary A- 29		168.3375	
HEBM	Steve Spellberg	781-789-1561	A/G West Secondary A-30		169.4625	Crescent Airport (5S2) Elevation 4819' 43 ° 31.967402N 121 ° 57.015535W AIS Hotsy at helibase for bucket/tank rinsing
			A/G West Firing A-65		171.8375	
Oakridge Helibase		503-551-3973				
UAO Willamette	Justin Vernon	541-224-3627				
						Email addresses: Finance: 2022.cedarcreek.finance@firenet.gov Helibase: 2022.cedarcreek.helibase@gmail.com
Oakridge Helibase	Primary Contact Number	503-551-3973	CTAF/UNICOM	122.9		
			DECK	163.100 (Tone) rx/tx	136.5	OAKRIDGE AIRPORT: N°43 45.16 X W 122° 30.28 (1393')

FAA N#	TY	MAKE/ MODEL	BASE	START	AVAIL	REMARKS	FAA N#	TY	MAKE/ MODEL	BASE	START	AVAIL	REMARKS
N804PJ	1	UH-60	Sunriver	0700	0900	Bucket A-12	HT1048Y	1	S-61A	Sunriver	0700	0900	H20/On Loan A-190
N635CK	1	S-61	Sunriver	0700	0900	Bucket A-188	N350HQ	3	AS 350 B3	Sunriver	0700	0900	Short Haul
N611CK	1	S-61	Sunriver	0700	0900	Bucket A-187	N854H	3	Bell 407	Sunriver	0700	0900	PSD/PAX/H20 A-162
N805RA	1	K-MAX	Crescent	0700	0900	Bucket A-197	N171PL	1	K-MAX	Crescent	0700	0900	Bucket A-35

INCIDENT RADIO COMMUNICATIONS PLAN (ICS 205)

Controlled Unclassified Information//Basic

1. Incident Name:	2. Date/Time Prepared:	3. Operational Period: DAY	
CEDAR CREEK	Date: 10/10/2022 Time: 2000	Date/Time From: 10/11/2022 0700 TUE	Date/Time To: 10/12/2022 0700 WED

4. Basic Radio Channel Use:

Zone Group	Ch #	Function	Channel Name/Trunked Radio System Talkgroup	Assignment	RX Freq	RX Tone/NAC	TX Freq	TX Tone/NAC	Mode (A,D, or M)	Remarks
	1	COMMAND	CMD 1	DIV A / Y AND NIGHT	170.0000 N	136.5	166.6750 N	136.5	A	LOCATED - HUCKLEBERRY MTN
	2	COMMAND	CMD 2	DIV T / W / X AND NIGHT	170.6875 N	136.5	166.5750 N	136.5	A	LOCATED - WOLF MT
	3	COMMAND	CMD 3	DIV R / T AND NIGHT	171.0625 N	136.5	162.8125 N	136.5	A	LOCATED - THE TWINS
	4	COMMAND	CMD 4	DIV A / P AND NIGHT	171.9000 N	136.5	165.9875 N	136.5	A	LOCATED - NE OF BOX CANYON
	5	COMMAND	CMD 5	DIV P / R AND NIGHT	170.0125 N	136.5	165.2500 N	136.5	A	LOCATED - CULTUS MTN
	6	COMMAND	CMD 6	POTTER/BIG SWAMP	170.2625 N	136.5	165.8125 N	136.5	A	LOCATED - WARNER MTN
	7	COMMAND	HUCKLEBERRY	WIF FOREST NET	170.4625 N	103.5	164.8250 N	103.5	A	POTTER/BIG SWAMP FIRES
	8	TACTICAL	TAC 8	DIV A/R AND STAGING	168.6000 N	136.5	168.6000 N	136.5	A	SHARED TACTICAL
	9	TACTICAL	TAC 9	DIV T	166.7250 N	136.5	166.7250 N	136.5	A	
	10	TACTICAL	TAC 10	DIV W	166.7750 N	136.5	166.7750 N	136.5	A	
	11	TACTICAL	TAC 11	DIV X / POTTER;BIG SWAMP	168.2500 N	136.5	168.2500 N	136.5	A	SHARED TACTICAL
	12	TACTICAL	TAC 12	DIV Y / P AND NIGHT	171.1125 N	136.5	171.1125 N	136.5	A	SHARED TACTICAL
	13	AIR TO GROUND	A/G PRI	AIR TO GROUND PRIMARY	168.3375 N		168.3375 N		A	AIR OPS PRIMARY
	14	AIR TO GROUND	A/G SEC	AIR TO GROUND SECONDARY	169.4625 N		169.4625 N		A	AIR OPS SECONDARY
	15	AIR TO GROUND	VMED 29	EMERGENCY USE	155.3475 N		155.3475 N	156.7	A	STATE INTEROP FOR MED FLIGHTS
	16	AIR GUARD	AIRGUARD	AIR GUARD	168.6250 N		168.6250 N	110.9	A	EMERGENCY AIR CONTACT

5. Special Instructions: COMMUNICATION PHONE: (208) 891-8093 24-Hours

6. Prepared By (Communications Unit Leader)	Name: MISSY PARKER	Signature: <i>Missy Parker</i>
ICS 205	IAP Page	Date/Time: 10/10/2022 2000

Controlled Unclassified Information//Basic

Resource Advisor Message

Cedar Creek Fire

Kailey Guerrant, Lead READ, 503-580-5387, kailey.guerrant@usda.gov

Suppression Repair Standards

Waterbars

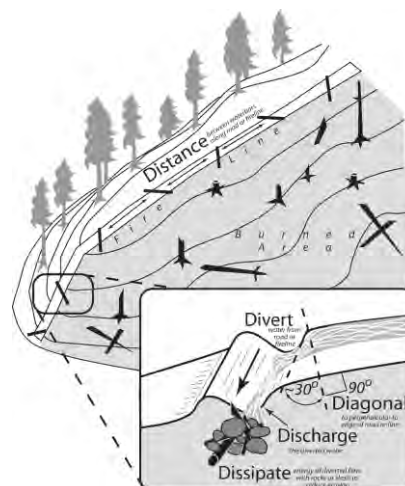
Height of water bar for handlines should average 6-12 inches. Height of machine-constructed water bars not to exceed 18 inches on slopes less than 40%. Height of machine-constructed water bars not to exceed 30 inches on slopes greater than 40%.

- Cut in the water bar – do not simply push up loose soil.
- Water bars should direct runoff away from the burned area where possible.
- Assure that the down slope end of the water bar is open and has adequate length to allow free flow of water off the fire line.
- Logs can be incorporated into water bars as long as they are embedded or anchored in a trench. Ensure fire end of log does not contact any organic material.
- Place slash below outlets of water bars to help slow runoff and collect sediment.

In selecting areas for establishing water bars the following should be considered:

- Locate bars at natural slope breaks. The idea is to move water off the fire line before it can build up enough energy to erode soil.
- When possible, locate bars where the outlet empties onto a resistant surface (i.e. rock or log debris).
- Locate bar outlets to provide maximum buffer distance to stream channel.
- Angle of water bars should be 20-45 degrees to the line.

Fire Line Slope %	Maximum Water Bar Spacing (feet)
2-5	300
6-10	200
11-15	150
16-20	100
21-35	75
36+	50



Dozer Line Repair

- Pull in berms and woody debris developed in construction of fireline. Distribute this material over the surface of the fire line, similar to the density of the surrounding area.
- Blockade lines at intersect with roads by placing logs and slash across the lines for 300 feet or site distance to minimize motorized use. Take extra care to return the entry points to a natural appearance that blends in with the surrounding landscape to the extent possible.
- At some line intersections with roads, it may be necessary to block access by constructing earthen berms and/or place boulders, heavy logs, slash, and other large vegetative material at the beginning of dozer line. These sites will be identified in Field Maps.
- Other blockage may be identified if lines exposed sensitive areas to future human intrusion.
- Lines requiring native seeding or weed-free mulching will **be identified in the Field Maps. If there isn't enough debris to achieve 50% ground cover, REAFs may identify areas where weed free straw, or wood mulch is needed. Work with a resource advisor to implement seeding where necessary.**

Chipping Standards

- Provide a 30- foot buffer of no chipping at water crossings or culverts.
- Do not place chips into road ditch.
- Do not chip onto a steep slope where chips will slide back into the ditch.
- Broadcast chipped material, ensuring that chips are no more than 4" deep.

640 Road: Cutting and Piling Specifications

- Within the wildlife habitat area: Load and transport piled log rounds from both sides of road and remove outside the core. Pile this material OUTSIDE the wildlife area at designated locations to be later burned following the specs below (NO burn piles within the wildlife habitat area).

Pile Specifications:

- Okay to fell a few trees <12" DBH within the current fuel break (West) side of road to accommodate the following burn pile specs, as coordinated with onsite READs.
- Min dimensions: 6 ft. W x 6 ft. H with brush and small debris at base;
- Max dimensions: Can NOT encroach into a 25 ft. buffer around adjacent leave trees;
- Chip and broadcast spray material on either side of the road but keep outside of any stream channels

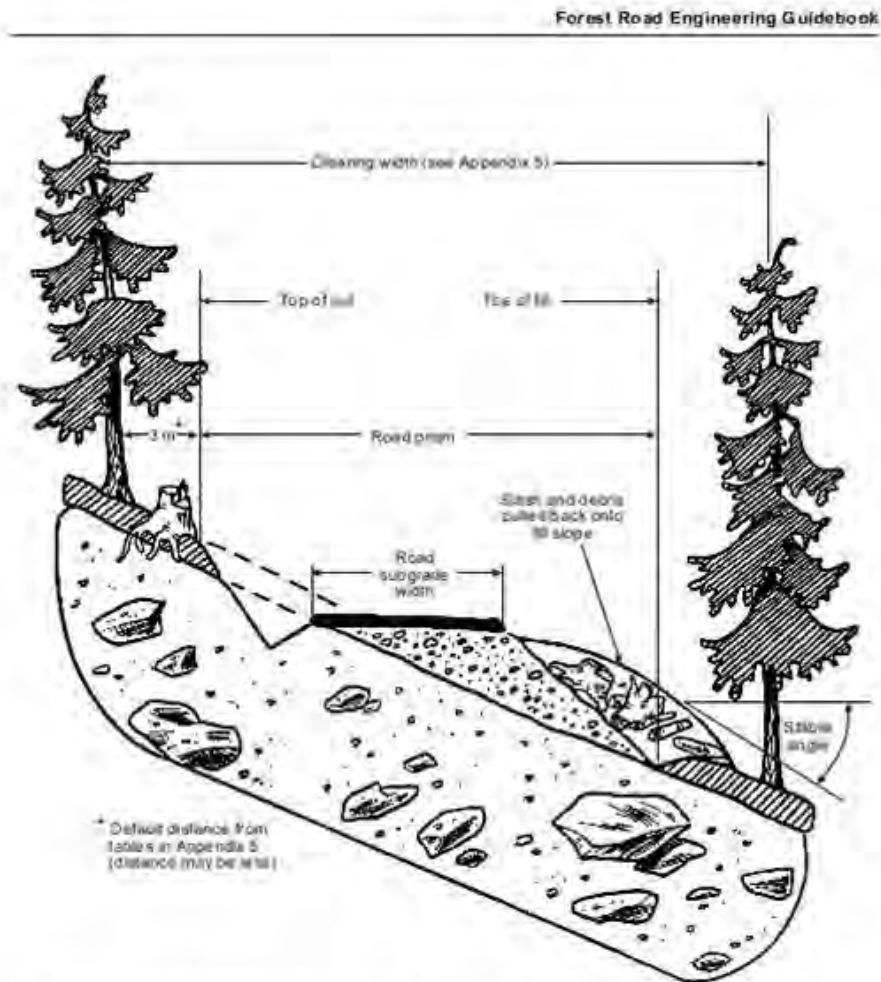


Figure 2. Typical roadway on moderate slopes with no additional clearing.

Please reach out to the REAF assigned to your division with any questions or concerns.

DEMOB INSTRUCTIONS

Cedar Creek, Junction Camp, Big Swamp & Potter

AIR TRAVEL – All resources requiring air travel to their home unit must call DEMOB 72 hours in advance of departure date to make travel arrangements.

DEMOB LOCATIONS: All demobs will occur at the resource current locations (Oakridge ICP or Junction Camp). Please follow the steps in this order.

1. **IAP:** Refer to the Tentative Demob list for your assigned Demob date/time.
2. **WEED WASH:** All OFF-ROAD resources need to complete a weed wash before leaving. Weed wash is located at Kokanee Staging near Oakridge ICP and Pit Staging near Junction Camp.
3. **GROUND SUPPORT:** Equipment contractors need to pick up inspection forms at Ground Support. If damage or claims are reported an inspection may be performed. Ground Support will inform Demob when completed.
4. **COMMUNICATIONS AND SUPPLY:** Turn in all checked out items to the respective units. As items are returned, Demob will be notified.
5. **FINANCE:** Report to Finance and close out all final paperwork.
6. **DEMOB:** Once closed out in Finance, call Demob at 541-482-1331. If no answer, try again in a few minutes. If still no answer, then leave a message with the following information:
 - a. Your Resource Order Number
 - b. Name of Resource/Company
 - c. City/State you are traveling to
 - d. Estimate time of departure and arrival
 - i. Rest overnight (RON) location if applicable.

This is the last step before you start your travel.

Demob: 541-482-1331 2022.cedarcreek.demob@firenet.gov

Cedar Creek Fire

Tentative Demob List

Time **Tuesday 10/11/2022**

700	C-5036	NW-MHF TLJC #4	CRWC
	O-898	PRIEST, HEATHER	RADO
	O-917.29	VAN NOSTRAND, HALA	SEC2
	O-917.45	MARSHALL, KRISTEN	SITL
	O-968	HOEFS, AIMEE	INCM
	O-971	BAKER, JORDAN	ICPI

Time **Wednesday 10/12/2022**

700	E-5058	DB JET ENTERPRISES	ENG6
	E-70	HANNA, GLENN	PUP1
	O-910	ESPARZA, RUDY	SECG
	O-955	KRECKLAU, JOSHUA	SEC2
	O-960	MCINTEER, JASON	REAF
	O-978	LIGHTSEY, ARIEL	PIOF
	O-984	DINGMAN, DREW	TFLD
	O-5405	KOLAKS, JEREMY	DIVS
	S-1334	ALS 35 - BLACKWOODS	SMED

Time **Thursday 10/13/2022**

800	E-5104	JSW LOGGING	LOG
830	E-5519	CLAY'S FAB & REPAIR	WTS2
	O-412	ROLSING, LAURA	REAF
	O-905	PIEHL, TED	TFLD
	O-959	SCHAFFRAN, ANDREW	DIVS
	O-972	RAMBO, CHRISTY	TIME
	O-973	BLASINGAME, SABRINA	EQTR
	O-982	BAKOS, TOBY	HEQB
	O-983	BASYE, PAUL	TFLD

TRAINING MESSAGE

Training Specialist Check-in – If you have a position task book (PTB), please scan the QR code below to initiate the check-in process with the Incident Training Specialist. Please complete the form in its entirety. Upon completion, at your earliest convenience, email a copy of your qualification card and position task book cover (see below for email address).

For your convenience, an electronic ICS-225 or ICS-226, Evaluation Record, and other appropriate assignment documentation will be sent to you after you complete the check-in process.



[CEDAR CREEK TRAINEE CHECK IN](#)

Incident Assignment Requirements –

1. Ensure your trainer(s)/evaluator(s) has/have initialed completed tasks in your PTB,
2. Obtain an Incident Performance Rating,
3. Obtain an Evaluation Record,
4. If evaluator initialed #1 on your Evaluation Record, ensure he/she signs as final evaluator (located on the backside of your PTB cover page),
5. Email all documentation (including item #4), when appropriate,
6. Complete Exit Interview (form will be provided via email).

Training Specialist

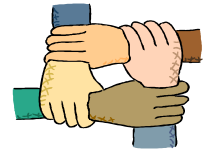
Debra Packard, 559-623-2983

Email: debra_packard@firenet.gov

NOTE: If you previously checked in with the RIST training specialist assigned to this incident, you do not need to check in again. The RIST training specialist, JoAnne Ware, will continue working with you to close out your training assignment.



Human Resource Message



GOT BLISTERS?



© Can Stock Photo - csp13250774

We have all had a blister. The longer the blister is allowed to fester, the worse it gets. However, with preventative measures, we can mitigate blisters.

Interpersonal problems and issues are like blisters. Whether they involve lack of mutual respect, inappropriate behavior, harassment or discrimination, we can all contribute to mitigating and resolving these issues and not allow them to fester and escalate.

Please be proactive and contact your HRSP when a work related problem or issue first arises and we will gladly help you mitigate it so it won't become an ugly blister!

Susie Manezes, HRSP
208-739-0255

Debra Packard, HRSP
559-623-2983

LOGISTICS (Hours of Operation & Information)**OAKRIDGE BASE CAMP**

Kitchen/Meals	0530 - 0900 1730 – 2030	Breakfast Dinner
Showers	0530 – 1200 and 1430 - 2200	
Laundry	0500 - 1200 and 1700 - 2200	1.5 hour turn around

KOKANEE STAGING

Ground Support	0530 - 2100	
Mechanic	0600 - 2100	
Inspections	0530 - 2100	
Weed Wash	0700 - 2100	
Supply	0530 - 2100	Email to 2022.cedarcreek.supply@gmail.com
Ordering**	0600 - 2100	Email to 2022.cedarcreek.ordering@firenet.gov
Fuel	0600 - 1100 1300 - 1800 1830 - 2100	Please fill locally if you have capabilities **Note: Please don't mix any fuel until ready to use. If you do mix it, remember to label it with mix ratio.

JUNCTION CAMP

20111 Crescent Lake Hwy, Crescent OR 97733

Kitchen/Meals	0615 – 0900, 1830 - 2130	Breakfast Dinner
Showers	0600 – 1200, 1400 - 2200	
Supply	0600 - 2130	

LAVA ODELL STAGING

Ground Support	0530 – 2100	
Fuel	0600 -1100, 1300 – 1800 1830 - 2100	
Weed Wash	0700 - 2100	

Ordering Instructions:

1. You must give a date and time needed with a minimum of 48 hours in the future, you can add in the comments "Or sooner if possible".
2. You must your put contact information on the 213.
3. Put both Ordering and Supply (in the "To" block) on your 213 so when it arrives at supply, so they know who to contact.
4. All orders must be approved and signed by Division or higher in Operations or Unit Leader or higher in other sections.



Finance Message



Finance Email: 2022.cedarcreek.finance@firenet.gov

SUBJECT: *Include Key Word* **TIME** for Overhead, Crews & Cooperators

SUBJECT: *Include Key Word* **EQUIPMENT** for Contract Resources

OAKRIDGE FINANCE: 971-239-6880

Please Scan this QR code to send all required documents to finance or use the email below



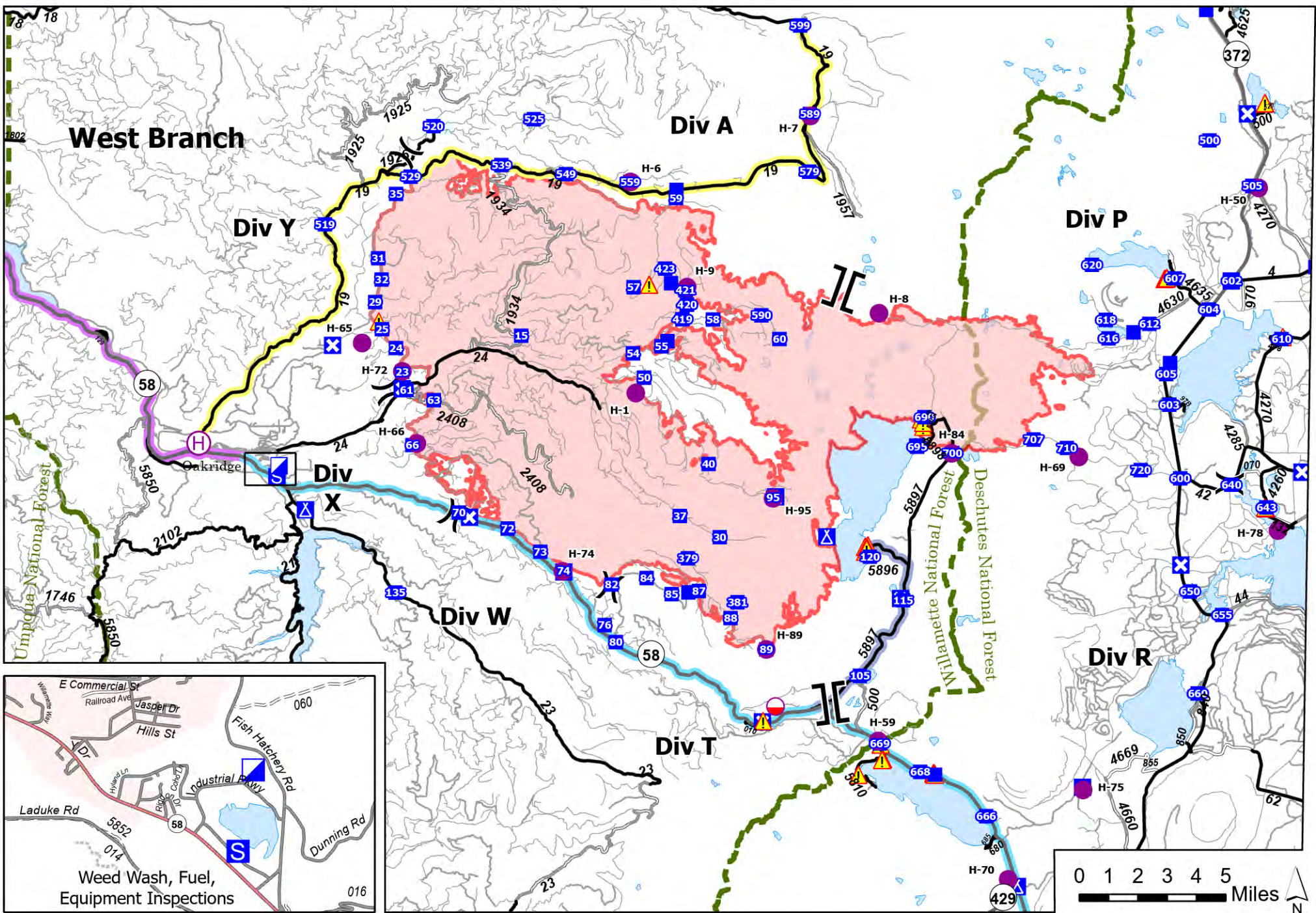
FINANCE CHECK IN: 2022.cedarcreek.finance@firenet.gov

PLEASE ENSURE THE BELOW DOCUMENTS ARE EMAILED

Overhead, Crews & Cooperator Resources	Contract Resources
<ul style="list-style-type: none"> • Check-In: Crew Manifest, Cooperative Agreement (if applies), AD Hire Letter, Resource Order • Daily: Crew Time Report (CTR), Shift Tickets • Demob: Signed OF288, Final Equipment Use Invoice (Cooperator) If you don't have a way to sign you must come to finance. 	<ul style="list-style-type: none"> • Check-In: Resource Order, Contract/VIPR Agreement (make sure you have your UEI, Pre-Inspection • Daily: Shift Tickets, receipts (fuel issues, claims, etc.) • Demob: Contractor Evaluations, Final Shift Tickets and receipt(s) for Addition/Deductions, Post-Inspection, Final Signed Invoices If you don't have a way to sign you must come to finance

REMINDERS

- ★ PLEASE ENSURE YOU INCLUDE LOCATION OF WHERE YOU ARE WORKING (CEDAR CREEK DIVISION /POTTER) ON THE CTR OR SHIFT TICKET. MAKE SURE C OR E # IS ON THE CTR OR SHIFT TICKET
- ★ PLEASE SHOW YOUR LUNCH BREAK
- ★ PLEASE USE MILITARY TIME (0001-2400)
- ★ WHEN CLAIMING HAZARD PAY YOU MUST INCLUDE THE SUPPRESSION ACTION BEING PERFORMED. THIS INCLUDES OPERATIONS WHICH DIRECTLY SUPPORT CONTROL OF FIRE (E.G., ACTIVITIES TO EXTINGUISH THE FIRE, FIREFIGHTING, GROUND SCOUTING, SPOT FIRE PATROLLING, SEARCH AND RESCUE OPERATIONS, AND BACKFIRING).
- ★ WHEN SIGNING YOUR OF-288 or OF-286 PLEASE DO NOT LOCK IT or PROTECT THE SIGNATURE, WE HAVE TO BE ABLE TO SIGN IT AND SEND YOU A COPY



Transportation

Cedar Creek
OR-WIF-220180
10/11/2022 24 Hour

- | | | | | |
|-------------------------|-------------------------|----------------|--------------------|--|
| ● Mobile Retardant Base | ⌋ Branch Break | ▲ Camp | — Paved Road | ● Oakridge to Crescent - 55 min. |
| ● Helispot | ■ Incident Command Post | ■ Staging Area | — Gravel Road | ● Oakridge to DP 599 - 1 hr. 35 min. |
| ⊕ Helibase | ■ Drop Point | ▲ Hazard | — Dirt Roads | ● Bristow State Park to Oakridge - 31 min. |
| ⌘ Division Break | ■ Closure | — Highway | — Unimproved Roads | ● OR-58 to DP 120 - 26 min. |



COVID-19 Mitigations for Cedar Creek Fire

- Masks are not required indoors unless working in a county with a HIGH COVID-19 community level. Currently, Lane County community level is LOW (masking indoors is optional).
- Conduct daily verbal screening checks within crews, report any COVID-like symptoms to your direct supervisor. Supervisors should report any positive symptoms to the Medical Unit for next steps.
- Observe social distancing standards while waiting in line for food and limit contact with others outside of your crew in the food service line. If possible, send crew representatives to pick up meals.
- Practice good personal hygiene, wash hands frequently and disinfect high-traffic areas on a regular basis.
- Limit close contact between firefighters and the public as much as possible to prevent exposure and spread.





EMERGENCY PLAN INCIDENT WITHIN AN INCIDENT

ON SCENE INCIDENT COMMANDER

In the event of an accident or medical incident of any size, your primary responsibility is to ENSURE that the victim(s) receive prompt and effective Triage, Treatment, Extrication and Transport.

- **ENSURE THE MEDICAL INCIDENT REPORT IN THE INCIDENT ACTION PLAN IS BEING USED AND FOLLOWED- *IF DETERMINED TO BE A GREEN, DO NOT DECLARE EMERGENCY TRAFFIC AND ONLY COMPLETE LINE 1-4 ON MIR*.**
- Conduct size-up of the incident nature of accident, number type of resources involved, latitude and longitude location (DD°MMM.MM format): notify incident communications center and supervisor, request assistance as needed.
- Order and coordinate medical and support response to the accident.
- Evaluate special needs (law enforcement, haz mat, etc.).
- Clear the command frequency if medical emergency, coordinate with incident communications and air attack for air medical transportation needs.
- Preserve and photograph the scene for accident investigation.
- Remain aware of surroundings and the status of the main incident (delegate personnel to monitor the main fire) to ensure safety of medical treatment personnel.
- Until relieved, supervise and manage all personnel involved at the incident scene.

MEDICAL PLAN (ICS 206 WF)

Incident/Project Name		1. Operational Period						
Cedar Creek-Potter/Big Swamp		October 11-12, 2022 0700-0700						
2. Ambulance Services								
Name	Complete Address	Phone	Advanced Life Support (ALS)					
			Yes	No				
Oakridge Fire & EMS	47592 Hwy 58 Oakridge, OR	Command Dispatch 541-682-3978	X					
Eugene Springfield Fire Dept	403 Main St. Springfield, OR	Command 541-682-5899	X					
Sun River Fire & Rescue	57475 Abbott Dr Sunriver, OR	Command	X					
La Pine Fire & Rescue	51590 Huntington Rd La Pine, OR	Command	X					
3. Air Ambulance Services								
Name	Phone	Location						
Emergency Air Transport	Command Secondary 911	Varies based on Availability Use VMED 29 air to ground						
Short Haul	Command Secondary 911	Crescent, OR AS 350 N350HQ						
4. Hospitals								
Name Complete Address	Coordinate Standard Degrees Decimal Minutes DD° MM.MMM' N - Lat DD° MM.MMM' W - Long		Travel Time From ICP Air Gnd		Phone	Helipad Yes No		Level of Care Facility
Sacred Heart Medical Center (Riverbend) 3333 Riverbend, Drive Springfield, OR	Lat:	44°04.881' N	15 mi ns	1 hr	541-222-6931	X		Level 3
	Long:	123°01.588' W						
Legacy Emanuel 2801 N Gantenbien Portland, OR	Lat:	45°32.59' N	30 mi ns	3 hrs	503-413-2200	X		Level 1 Trauma Burn Center
	Long:	122°40.16' W						
St Charles Medical Center 2500 NE Neff Rd Bend, OR	Lat:	44°04.102' N	45 mi ns	1.45 hrs	541-706-7777	X		Level 2
	Long:	121°16.053' W						
5. Division Branch Group	Capability			Personnel				
Div. A	ALS Ambulance EMPF, EMTF, UTV			Ambo 1 (E-99) Medic 34 (S-1333)				
Div. T	ALS Ambulance EMPF, EMTF, UTV EMPF EMTF			Ambo 3 (E-257) Medic 35 (S-1334) Medic Ontko Necole Ontko (O-939.3) BLS 55 (O-987)				
Div. W	EMPF, (3) EMTF, Side by side, High Angle Rope Extraction			REMS 1 (S-279)				
Div. X	EMPF, EMTF, UTV			RAT 2 (S-1127)				

MEDICAL PLAN (ICS 206 WF)

Div. Y	ALS Ambulance EMPF, (3) EMTF, Side by side, High Angle Rope Extraction	Ambo 7 (E-5405) REMS 12 (S-5428)	
Div. P	ALS Ambulance EMPF, EMTF, UTV EMPF, EMTF, UTV	Ambo 9 (E-5465) Medic 3 (S-5052) Medic 7 (S-449)	
Div. R	ALS Ambulance EMPF, EMTF, UTV EMPF, EMTF, UTV	Ambo 6 (E-5115) Medic 1 (S-5049) Medic 2 (S-5051)	
Night Shift	Command/911		
Junction Spike	Lee Venning MEDL Mariann Turley MEDL-t		
Potter/Big Swamp	ALS Ambulance	Ambo 2 (E-176)	
Oakridge Camp	(D) Diana Braun MEDL Edna Flores MEDL (N) John Nokes – MEDL		
6. Prepared By (Medical Unit Leader)	7. Date/Time	8. Reviewed By (Safety Officer)	9. Date/Time
Diana Braun	10/10/2022 1800	Jack Cates <i>Jack Cates</i>	10/10/2022 1800

Short-Haul Operations

CAPABILITIES

- During an operational Short-Haul the helicopter is capable of inserting Short-Haulers into an area with tight canopy cover and/or technical terrain.
- Haul line lengths range from 100 feet to 350 feet.
- Short hauler and/or medical gear can be delivered to the medical scene even if extraction by short-haul is not necessary.

ORDERING

- EMT or Medical Incident IC determines medical extraction is required.
- Follow local established procedures and/or Medical Incident Report (MIR) in the IRPG.
- Confirm aircraft type, call sign, estimated time of arrival and frequency.
- Give site selection information when ordering: hazards (i.e. ash, smoke, snags, aerial), tree height, terrain, and patient transport configuration (supine or seated position). Repeat hazards and give updated weather conditions as well as brief patient update to responding helicopter.

PROCESS: The helicopter will fly to the coordinates provided. They will make contact with ground personnel on scene with the patient using an identified air-to-ground frequency. The helicopter will complete a short-haul recon and size up, gather patient update information and then fly to a landing zone (LZ) to configure for short-haul operations. The helicopter will be monitoring the appropriate air-to-ground, air guard and victor frequencies. From this point, ground resources should only contact the helicopter in case of an emergency. During the insertion and extraction process ground personnel must be clear of the area.

ON SCENE: EXPECT THE FOLLOWING

- 1 or 2 rescuers (at least one qualified as an EMT or higher)
- Backboard (if needed and not already on scene)
- All equipment necessary for patient extraction

The Patient Extraction Bag accommodates most backboards.
-A patient on a backboard, TRS, SKED or litter will be inserted into the bag.



The Seat Harness is used for patients not requiring the use of a backboard.



IAP INSERT

MEDICAL PLAN (ICS 206 WF)

Controlled Unclassified Information//Basic

Medical Incident Report

FOR A NON-EMERGENCY INCIDENT, WORK THROUGH CHAIN OF COMMAND TO REPORT AND TRANSPORT INJURED PERSONNEL AS NECESSARY.

FOR A MEDICAL EMERGENCY: IDENTIFY ON SCENE INCIDENT COMMANDER BY NAME AND POSITION AND ANNOUNCE "MEDICAL EMERGENCY" TO INITIATE RESPONSE FROM IMT COMMUNICATIONS/DISPATCH.

Use the following items to communicate situation to communications/dispatch.

1. CONTACT COMMUNICATIONS / DISPATCH (**Verify correct frequency prior to starting report**)

Ex: "Communications, Div. Alpha. Stand-by for Emergency Traffic."

2. INCIDENT STATUS: *Provide incident summary (including number of patients) and command structure.*

Ex: "Communications, I have a Red priority patient, unconscious, struck by a falling tree. Requesting air ambulance to Forest Road 1 at (Lat./Long.) This will be the Trout Meadow Medical, IC is TFLD Jones. EMT Smith is providing medical care."

Severity of Emergency / Transport Priority	<input type="checkbox"/> RED / PRIORITY 1 Life or limb threatening injury or illness. Evacuation need is IMMEDIATE <i>Ex: Unconscious, difficulty breathing, bleeding severely, 2° – 3° burns more than 4 palm sizes, heat stroke, disoriented.</i> <input type="checkbox"/> YELLOW / PRIORITY 2 Serious Injury or illness. Evacuation may be DELAYED if necessary. <i>Ex: Significant trauma, unable to walk, 2° – 3° burns not more than 1-3 palm sizes.</i> <input type="checkbox"/> GREEN / PRIORITY 3 Minor Injury or illness. Non-Emergency transport <i>Ex: Sprains, strains, minor heat-related illness.</i>	
Nature of Injury or Illness & Mechanism of Injury		<i>Brief Summary of Injury or Illness (Ex: Unconscious, Struck by Falling Tree)</i>
Transport Request		<i>Air Ambulance / Short Haul/Hoist Ground Ambulance / Other</i>
Patient Location		<i>Descriptive Location & Lat. / Long. (WGS84)</i>
Incident Name		<i>Geographic Name + "Medical" (Ex: Trout Meadow Medical)</i>
On-Scene Incident Commander		<i>Name of on-scene IC of Incident within an Incident (Ex: TFLD Jones)</i>
Patient Care		<i>Name of Care Provider (Ex: EMT Smith)</i>

3. INITIAL PATIENT ASSESSMENT: *Complete this section for each patient as applicable (start with the most severe patient)*

Patient Assessment: See IRPG page 106

Treatment:

4. TRANSPORT PLAN:

Evacuation Location (if different): *(Descriptive Location (drop point, intersection, etc.) or Lat. / Long.)* Patient's ETA to Evacuation Location:

Helispot / Extraction Site Size and Hazards:

5. ADDITIONAL RESOURCES / EQUIPMENT NEEDS:

Example: Paramedic/EMT, Crews, Immobilization Devices, AED, Oxygen, Trauma Bag, IV/Fluid(s), Splints, Rope rescue, Wheeled litter, HAZMAT, Extrication

6. COMMUNICATIONS: Identify State Air/Ground EMS Frequencies and Hospital Contacts as applicable

Function	Channel Name/Number	Receive (RX)	Tone/NAC *	Transmit (TX)	Tone/NAC *
COMMAND					
AIR-TO-GRND					
TACTICAL					

7. CONTINGENCY: **Considerations:** *If primary options fail, what actions can be implemented in conjunction with primary evacuation method? Be thinking ahead.*

8. ADDITIONAL INFORMATION: *Updates/Changes, etc.*

REMEMBER: Confirm ETA's of resources ordered. Act according to your level of training. Be Alert. Keep Calm. Think Clearly. Act Decisively.

Controlled Unclassified Information//Basic