

# Incident Action Plan **CEDAR CREEK POTTER & BIG SWAMP**

**October 12-13, 2022**

**Operational Period**

*Dayshift - 0700-2000*

*Nightshift - 1730-0700*



**SCAN QR CODE**

*For*

**BRIEFING LINK**

**DOWNLOAD IAP**

**DOWNLOAD MAPS**

*Send in PHOTOS*

**CHECK-IN**

*Submit TIME to FINANCE*

*Cedar Creek - OR-WIF-220180 – P6PYP6 (0618)*

*Cedar Creek – WA DNR – 221-IWA*

*Potter – OR-WIF-220170 – P6PX6A (0618)*

*Big Swamp – OR-WIF-220189 – P6PY6M (0618)*




This page intentionally left blank.



## INCIDENT OBJECTIVES (ICS 202)

|                                                                                                                                                                                                                                                                                                                                                                                                                                                                                                                                                                                                                                                                                                                                                                                                                                                                                                                                                                                                                                                                                                                                                                                                                                                                                                    |                                                                                                                                                                                                                                                        |                                                                                                                                                                                                                                                                                                |
|----------------------------------------------------------------------------------------------------------------------------------------------------------------------------------------------------------------------------------------------------------------------------------------------------------------------------------------------------------------------------------------------------------------------------------------------------------------------------------------------------------------------------------------------------------------------------------------------------------------------------------------------------------------------------------------------------------------------------------------------------------------------------------------------------------------------------------------------------------------------------------------------------------------------------------------------------------------------------------------------------------------------------------------------------------------------------------------------------------------------------------------------------------------------------------------------------------------------------------------------------------------------------------------------------|--------------------------------------------------------------------------------------------------------------------------------------------------------------------------------------------------------------------------------------------------------|------------------------------------------------------------------------------------------------------------------------------------------------------------------------------------------------------------------------------------------------------------------------------------------------|
| <b>1. Incident Name:</b>                                                                                                                                                                                                                                                                                                                                                                                                                                                                                                                                                                                                                                                                                                                                                                                                                                                                                                                                                                                                                                                                                                                                                                                                                                                                           | <b>2. Operational Period: DAY</b>                                                                                                                                                                                                                      |                                                                                                                                                                                                                                                                                                |
| CEDAR CREEK                                                                                                                                                                                                                                                                                                                                                                                                                                                                                                                                                                                                                                                                                                                                                                                                                                                                                                                                                                                                                                                                                                                                                                                                                                                                                        | Date/Time From:<br>10/12/2022 0700      WED                                                                                                                                                                                                            | Date/Time To:<br>10/13/2022 0700      THU                                                                                                                                                                                                                                                      |
| <b>3. Objective(s):</b>                                                                                                                                                                                                                                                                                                                                                                                                                                                                                                                                                                                                                                                                                                                                                                                                                                                                                                                                                                                                                                                                                                                                                                                                                                                                            |                                                                                                                                                                                                                                                        |                                                                                                                                                                                                                                                                                                |
| <p>Provide for firefighter and public safety; specifically manage risk to firefighters by ensuring hazards are identified, assessed and where possible mitigated. Be prepared to accept residual risk when exposure is commensurate with values threatened and the probability of achieving objectives is high.</p> <p>Implement operational plans to keep fire within established primary control lines to protect identified values at risk including:</p> <ul style="list-style-type: none"> <li>• Oakridge, Westfir, and High Prairie</li> <li>• Highway 58 and Forest Road 19</li> <li>• Union Pacific railroad corridor</li> <li>• Waldo Lake and associated recreational investments</li> <li>• Private infrastructure and recreational investments within surrounding Cascade Lakes Highway</li> <li>• Willamette Pass Ski-Area; Private infrastructure, and Forest Recreational Investments</li> </ul> <p>Promote coordination and partnership by developing clear dialogue and providing timely information between the IMT, affected agencies, and the public. Engage in effective communication with Agency Administrators and cooperators.</p> <p>Coordinate with Resource Advisors to complete fire suppression and approved repair work to protect natural and cultural values.</p> |                                                                                                                                                                                                                                                        |                                                                                                                                                                                                                                                                                                |
| <b>4. Operational Period Command Emphasis:</b>                                                                                                                                                                                                                                                                                                                                                                                                                                                                                                                                                                                                                                                                                                                                                                                                                                                                                                                                                                                                                                                                                                                                                                                                                                                     |                                                                                                                                                                                                                                                        |                                                                                                                                                                                                                                                                                                |
| Complete operational assignments and tasks as directed in the IAP and by your Division Supervisor to avoid mission creep.                                                                                                                                                                                                                                                                                                                                                                                                                                                                                                                                                                                                                                                                                                                                                                                                                                                                                                                                                                                                                                                                                                                                                                          |                                                                                                                                                                                                                                                        |                                                                                                                                                                                                                                                                                                |
| <b>General Situational Awareness:</b>                                                                                                                                                                                                                                                                                                                                                                                                                                                                                                                                                                                                                                                                                                                                                                                                                                                                                                                                                                                                                                                                                                                                                                                                                                                              |                                                                                                                                                                                                                                                        |                                                                                                                                                                                                                                                                                                |
| Monitor the weather, especially wind. Ensure overhead hazards are mitigated and L.C.E.S. is in place.                                                                                                                                                                                                                                                                                                                                                                                                                                                                                                                                                                                                                                                                                                                                                                                                                                                                                                                                                                                                                                                                                                                                                                                              |                                                                                                                                                                                                                                                        |                                                                                                                                                                                                                                                                                                |
| <b>5. Site Safety Plan Required?</b> Yes <input checked="" type="checkbox"/> No <input type="checkbox"/>                                                                                                                                                                                                                                                                                                                                                                                                                                                                                                                                                                                                                                                                                                                                                                                                                                                                                                                                                                                                                                                                                                                                                                                           |                                                                                                                                                                                                                                                        |                                                                                                                                                                                                                                                                                                |
| <b>Approved Site Safety Plan(s) Located</b> ICP                                                                                                                                                                                                                                                                                                                                                                                                                                                                                                                                                                                                                                                                                                                                                                                                                                                                                                                                                                                                                                                                                                                                                                                                                                                    |                                                                                                                                                                                                                                                        |                                                                                                                                                                                                                                                                                                |
| <b>6. Incident Action Plan</b> (the items checked below are included in this Incident Action Plan):                                                                                                                                                                                                                                                                                                                                                                                                                                                                                                                                                                                                                                                                                                                                                                                                                                                                                                                                                                                                                                                                                                                                                                                                |                                                                                                                                                                                                                                                        |                                                                                                                                                                                                                                                                                                |
| <input checked="" type="checkbox"/> ICS 202<br><input checked="" type="checkbox"/> ICS 203<br><input checked="" type="checkbox"/> ICS 204<br><input checked="" type="checkbox"/> ICS 205<br><input type="checkbox"/> ICS 205A<br><input checked="" type="checkbox"/> ICS 206                                                                                                                                                                                                                                                                                                                                                                                                                                                                                                                                                                                                                                                                                                                                                                                                                                                                                                                                                                                                                       | <input checked="" type="checkbox"/> ICS 207<br><input type="checkbox"/> ICS 208<br><input checked="" type="checkbox"/> ICS 220<br><input checked="" type="checkbox"/> Map/Chart<br><input checked="" type="checkbox"/> Weather Forecast/Tides/Currents | <b>Other Attachments:</b><br><input checked="" type="checkbox"/> FIRE BEHAVIOR, SAFETY MESSAGE<br><input checked="" type="checkbox"/> HR MESSAGE, FINANCE<br><input checked="" type="checkbox"/> LOGISTICS INFO, PHONE LISTS<br><input checked="" type="checkbox"/> UNIT LOG, CHECK-IN / DEMOB |
| <b>7. Prepared by:</b> JILL JOHNSON                                                                                                                                                                                                                                                                                                                                                                                                                                                                                                                                                                                                                                                                                                                                                                                                                                                                                                                                                                                                                                                                                                                                                                                                                                                                | <b>Position/Title:</b> PSC2                                                                                                                                                                                                                            | <b>Signature:</b> <i>Jill Johnson</i>                                                                                                                                                                                                                                                          |
| <b>8. Approved by Incident Commander:</b>                                                                                                                                                                                                                                                                                                                                                                                                                                                                                                                                                                                                                                                                                                                                                                                                                                                                                                                                                                                                                                                                                                                                                                                                                                                          | <b>Name:</b> BOB SHINDELAR                                                                                                                                                                                                                             | <b>Signature:</b> <i>Bob Shindelar</i>                                                                                                                                                                                                                                                         |
| <b>ICS 202</b>                                                                                                                                                                                                                                                                                                                                                                                                                                                                                                                                                                                                                                                                                                                                                                                                                                                                                                                                                                                                                                                                                                                                                                                                                                                                                     | <b>IAP Page</b>                                                                                                                                                                                                                                        | <b>Date/Time:</b> 10/11/2022 2000                                                                                                                                                                                                                                                              |

## ORGANIZATION ASSIGNMENT LIST (ICS 203)

|                                                    |                                                      |                                                    |                                                                                       |
|----------------------------------------------------|------------------------------------------------------|----------------------------------------------------|---------------------------------------------------------------------------------------|
| <b>1. Incident Name:</b>                           |                                                      | <b>2. Operational Period:</b> DAY                  |                                                                                       |
| CEDAR CREEK                                        |                                                      | Date/Time From:<br>10/12/2022 0700 WED             | Date/Time To:<br>10/13/2022 0700 THU                                                  |
| <b>3. Incident Commander(s) and Command Staff:</b> |                                                      | <b>FACILITIES UNIT</b>                             |                                                                                       |
| IC/UC                                              | BOB SHINDELAR                                        | TOM BOYD<br>WHIT SPENCER                           |                                                                                       |
| DEPUTY                                             |                                                      | <b>GROUND SUPPORT UNIT</b>                         |                                                                                       |
| SAFETY OFFICER                                     | JACK CATES<br>TROY CORN                              | DAVE HARSH (ICP)<br>JON KAUTT (JUNCTION CAMP)      |                                                                                       |
| INFORMATION OFFICER                                | JOEL BRUMM<br>LIV STECKER                            | <b>MEDICAL UNIT</b>                                |                                                                                       |
| LIAISON OFFICER                                    | SCOTT CRAWFORD<br>JEFF SEVIGNEY                      | DIANA BRAUN (ICP)<br>LEE VENNING (JUNCTION CAMP)   |                                                                                       |
| HUMAN RESOURCES                                    | SUSIE MANEZES (ICP)<br>DEBRA PACKARD (JUNCTION CAMP) | <b>COMMUNICATIONS UNIT</b>                         |                                                                                       |
|                                                    |                                                      | MISSY PARKER                                       |                                                                                       |
|                                                    |                                                      | <b>FOOD UNIT</b>                                   |                                                                                       |
|                                                    |                                                      | LAURA MILLER                                       |                                                                                       |
|                                                    |                                                      | <b>SECURITY UNIT</b>                               |                                                                                       |
|                                                    |                                                      | KEIRSTEN FORBEY (ICP)<br>RICK SHUE (JUNCTION CAMP) |                                                                                       |
|                                                    |                                                      | <b>7. Operations Section:</b>                      |                                                                                       |
|                                                    |                                                      | <b>FIELD OPS</b>                                   |                                                                                       |
|                                                    |                                                      | AARON ROWE<br>MIKE DAVIS (T)                       |                                                                                       |
|                                                    |                                                      | <b>PLANNING OPS</b>                                |                                                                                       |
|                                                    |                                                      | TONY ENGEL<br>TOMMY MENTZER (T)                    |                                                                                       |
|                                                    |                                                      | <b>Branch</b>                                      |                                                                                       |
|                                                    |                                                      | <b>WEST</b>                                        |                                                                                       |
|                                                    |                                                      | <b>BRANCH DIRECTOR</b>                             |                                                                                       |
|                                                    |                                                      | AARON ROWE<br>HECTOR MEDRANO (T)                   |                                                                                       |
|                                                    |                                                      | <b>DIVISION/GROUP</b>                              | A                                                                                     |
|                                                    |                                                      |                                                    | ISAIAH SALSKY                                                                         |
|                                                    |                                                      | <b>DIVISION/GROUP</b>                              | T                                                                                     |
|                                                    |                                                      |                                                    | SAM STEINSHOUER                                                                       |
|                                                    |                                                      | <b>DIVISION/GROUP</b>                              | W                                                                                     |
|                                                    |                                                      |                                                    | BOB HINDS                                                                             |
|                                                    |                                                      | <b>DIVISION/GROUP</b>                              | X                                                                                     |
|                                                    |                                                      |                                                    | DENNIS MAWHINNEY                                                                      |
|                                                    |                                                      | <b>DIVISION/GROUP</b>                              | Y                                                                                     |
|                                                    |                                                      |                                                    | ANDREW SCHAFFRAN                                                                      |
|                                                    |                                                      | <b>DIVISION/GROUP</b>                              | P                                                                                     |
|                                                    |                                                      |                                                    | JOE HARRIS                                                                            |
|                                                    |                                                      | <b>DIVISION/GROUP</b>                              | R                                                                                     |
|                                                    |                                                      |                                                    | JEREMY KOLAKS                                                                         |
|                                                    |                                                      | <b>DIVISION/GROUP</b>                              | POTTER/BIG SWAMP                                                                      |
|                                                    |                                                      |                                                    | QUINLAN ANDERSON                                                                      |
|                                                    |                                                      | <b>DIVISION/GROUP</b>                              | NIGHT                                                                                 |
|                                                    |                                                      |                                                    | MICHAEL SCHINSTOCK                                                                    |
|                                                    |                                                      | <b>7b. Air Operations Branch:</b>                  |                                                                                       |
|                                                    |                                                      | <b>AIR OPS BRANCH DIRECTOR</b>                     |                                                                                       |
|                                                    |                                                      | PAUL BALFOUR                                       |                                                                                       |
|                                                    |                                                      | <b>AIR SUPPORT SUPERVISOR</b>                      |                                                                                       |
|                                                    |                                                      | ALBERT FARIA                                       |                                                                                       |
|                                                    |                                                      | <b>8. Finance/Administration Section:</b>          |                                                                                       |
|                                                    |                                                      | <b>CHIEF</b>                                       |                                                                                       |
|                                                    |                                                      | CHERI FULLER                                       |                                                                                       |
|                                                    |                                                      | <b>DEPUTY</b>                                      |                                                                                       |
|                                                    |                                                      | CHRISTINA GOEBEL                                   |                                                                                       |
|                                                    |                                                      | <b>TIME UNIT</b>                                   |                                                                                       |
|                                                    |                                                      | STEVE CROW                                         |                                                                                       |
|                                                    |                                                      | <b>PROCUREMENT UNIT</b>                            |                                                                                       |
|                                                    |                                                      | MARK BOHNET                                        |                                                                                       |
|                                                    |                                                      | <b>COST UNIT</b>                                   |                                                                                       |
|                                                    |                                                      | KAY HIGH (VIRTUAL)                                 |                                                                                       |
|                                                    |                                                      | <b>ICPI</b>                                        |                                                                                       |
|                                                    |                                                      | ROB HECHINGER                                      |                                                                                       |
|                                                    |                                                      |                                                    |                                                                                       |
| <b>6. Logistics Section:</b>                       |                                                      |                                                    |                                                                                       |
|                                                    |                                                      | <b>CHIEF</b>                                       |                                                                                       |
|                                                    |                                                      | KEVIN HAUGHTON<br>KAREN ZIRKLE (T)                 |                                                                                       |
|                                                    |                                                      | <b>DEPUTY</b>                                      |                                                                                       |
|                                                    |                                                      | RANDY SPIERING (JUNCTION CAMP)                     |                                                                                       |
|                                                    |                                                      | <b>SUPPLY UNIT</b>                                 |                                                                                       |
|                                                    |                                                      | JOHN KAUPA                                         |                                                                                       |
| <b>9. Prepared By:</b>                             | <b>Name:</b> JILL JOHNSON                            | <b>Position/Title:</b> PSC                         | <b>Signature:</b>                                                                     |
| ICS 203                                            | IAP Page                                             | Date/Time: 10/11/2022 2000                         |  |

# FIRE WEATHER FORECAST

|                        |                         |                                |               |
|------------------------|-------------------------|--------------------------------|---------------|
| <b>FORECAST NO:</b>    | 68                      | <b>NAME OF FIRE:</b>           | Cedar Creek   |
| <b>PREDICTION FOR:</b> | Wednesday, Oct 12, 2022 | <b>UNIT:</b>                   | OR-WIF-220180 |
| <b>ISSUED:</b>         | 1900 PDT, Oct 11, 2022  | <b>Incident Meteorologist:</b> | Bob Tobin     |

### \*\*\* NEAR CRITICAL WEATHER CONDITIONS THROUGH THE WEEK \*\*\*

**DISCUSSION:** High pressure will be over the fire area the remainder of the week. This will result in a warming and drying trend. Temperatures will be 5-10 degrees above average if not more. Offshore flow will result in poor overnight relative humidity recoveries on mid-slopes and ridges each night. There is the possibility of some gusty ridgetop winds as well.

#### WEDNESDAY: ABOVE AVERAGE TEMPERATURES AND DRY CONDITIONS

|                                 |                                                                                                                                                                                                                                                                                     |                     |                              |
|---------------------------------|-------------------------------------------------------------------------------------------------------------------------------------------------------------------------------------------------------------------------------------------------------------------------------------|---------------------|------------------------------|
| <b>WEATHER:</b>                 | Smoke and haze at the lower elevation. Some afternoon clearing. Sunny on mid-slopes and ridges.                                                                                                                                                                                     | <b>MAX TEMPS:</b>   | West: 70-80<br>East: 70-80   |
| <b>WIND (EYE LEVEL, MPH):</b>   | <b>Sheltered areas:</b> VRB 2-5 mph through 1200, then upslope 4-7 mph.<br><b>Ridges, unsheltered areas, wind-aligned drainages:</b> E-SE 7-12 gusts to 20 mph...then NW 5-10 mph after 1400.<br><b>East of the Crest:</b> E-SE 7-12 gusts to 20 mph...then NW 5-10 mph after 1400. | <b>MIN RH:</b>      | West: 20-30%<br>East: 20-25% |
| <b>HAINES (HIGH LEVEL):</b>     | 4(Stability 2, moisture 2)                                                                                                                                                                                                                                                          | <b>CWR:</b>         | 0%                           |
| <b>PEAK MIXING HEIGHT/WIND:</b> | 3500 ft AGL/NW 5-10 mph                                                                                                                                                                                                                                                             | <b>Rain Amount:</b> | 0.00                         |
| <b>INVERSION:</b>               | Strong, mixing out after 1400                                                                                                                                                                                                                                                       | <b>LAL:</b>         | 1                            |

#### WEDNESDAY NIGHT: POOR RECOVERIES ON RIDGES...MODERATE RECOVERIES VALLEY BOTTOMS

|                               |                                                                                                                                                         |                     |      |
|-------------------------------|---------------------------------------------------------------------------------------------------------------------------------------------------------|---------------------|------|
| <b>WEATHER:</b>               | Clear, heavy smoke and haze under the inversion.                                                                                                        | <b>CWR:</b>         | 0%   |
| <b>WIND (EYE LEVEL, MPH):</b> | <b>Sheltered areas, mid-slopes, and valley bottoms:</b> Drainage 3-5 mph after 1900. <b>Ridges:</b> SE 8-12 gusts to 15 mph. East Side: E-SE 10-12 mph. | <b>Rain Amount:</b> | 0.00 |
| <b>MIN TEMPS:</b>             | <b>Ridges: 55-60, Mid-slope and below: 40-50, East: 30-40.</b>                                                                                          |                     |      |
| <b>MAX RH:</b>                | <b>Ridges to mid-slope: 25-35%, Mid-slope and below: 35-45%, East of the crest: 45-55%</b>                                                              |                     |      |
| <b>INVERSION:</b>             | Strong developing mid-slope after 1900.                                                                                                                 |                     |      |

#### THURSDAY:

|                                 |                                                                                                                                                                                                                                                                                          |                     |                              |
|---------------------------------|------------------------------------------------------------------------------------------------------------------------------------------------------------------------------------------------------------------------------------------------------------------------------------------|---------------------|------------------------------|
| <b>WEATHER:</b>                 | Smoke and haze. Afternoon clearing                                                                                                                                                                                                                                                       | <b>MAX TEMPS:</b>   | West: 70-80<br>East: 65-78   |
| <b>WIND (EYE LEVEL, MPH):</b>   | <b>Sheltered areas:</b> up-slope 3-6 mph through 1300, then NW 5-7 mph.<br><b>Ridges, unsheltered areas, wind-aligned drainages:</b> E-SE 10-12 mph gusts to 20 mph...becoming NW-5-10 mph after 1400. <b>East of the Crest:</b> E-SE 10-12 mph gusts to 20 mph...becoming VRB 5-10 mph. | <b>MIN RH:</b>      | West: 20-30%<br>East: 18-24% |
| <b>HAINES (HIGH LEVEL):</b>     | 4 (Stability 2, moisture 2)                                                                                                                                                                                                                                                              | <b>CWR:</b>         | 0%                           |
| <b>PEAK MIXING HEIGHT/WIND:</b> | 6,000 ft AGL/NW 5-10 mph                                                                                                                                                                                                                                                                 | <b>Rain Amount:</b> | 0.00                         |
| <b>INVERSION:</b>               | Strong, mid-slope, mixing out after 1400                                                                                                                                                                                                                                                 | <b>LAL:</b>         | 1                            |

#### EXTENDED OUTLOOK:

|                  |                                                                                                                                        |
|------------------|----------------------------------------------------------------------------------------------------------------------------------------|
| <b>FRIDAY:</b>   | Sunny, smoke and haze. Highs upper 60s to lower 80s...Min RH 20-30%...E-SE winds 8-12 gust 20 mph...Becoming W-NW 5-10 mph after 1500. |
| <b>SATURDAY:</b> | Sunny and warm. Highs upper 60s to lower 80s...Min RH 20-30%...E-SE winds 8-12 gust 20 mph...Becoming W-NW 5-10 mph after 1400.        |
| <b>SUNDAY:</b>   | Sunny and warm. Highs upper 60s to lower 80s...Min RH 20-30%...E-SE winds early becoming NW 5-10 mph after 1400.                       |

## FIRE BEHAVIOR FORECAST

|                                |                                                     |
|--------------------------------|-----------------------------------------------------|
| <b>FORECAST NUMBER:</b> 68     | <b>TYPE OF FIRE:</b> Wildland Fire                  |
| <b>FIRE NAME:</b> Cedar Creek  | <b>OPERATIONAL PERIOD:</b> 10/12-13/2022, 0700-0700 |
| <b>DATE ISSUED:</b> 10/11/2022 | <b>TIME ISSUED:</b> 1900                            |
| <b>UNIT:</b> USFS-OR-WIF       | <b>SIGNED:</b> Don Strand, FBAN                     |

### INPUTS

**WEATHER SUMMARY:** Partly cloudy- Temp **80°** Relative Humidity **20% (east): 20% (west)** Winds: ridges, unsheltered areas, & wind-aligned areas; E-SE 7-12 gusts to 20 mph...then NW 5-10 after 1400. Winds: East of Crest; E-SE 7-12 gusts to 20 mph.... then NW 5-10 after 1400. **Haines 4 (stable)**  
**\*\*\*See Weather Forecast for detailed information\*\*\***

### Fire Behavior Summary

**GENERAL:** Primary fuel types are TL5 and TU5. **TL5** is compact short needle conifer litter, found primarily in 2nd growth Douglas fir plantations. **TU5** is timber overstory with very high surface fuel load- short needle conifer with heavy brush and down log fuel loading in mature or old growth stands. Lichen is present across the landscape and spots readily. Timber stands with needle litter (**TL3**), dominated by Fir, Hemlock, or Lodgepole Pine. **TL8** is timber stands with needle litter dominated by Ponderosa Pine.

| Fuel Type- Branch                 | Head ROS            | Head FL      | Spot Distance  |
|-----------------------------------|---------------------|--------------|----------------|
| Timber litter (TL5)               | Up to 3 ch/hr. West | Up to 2 feet | Up to 0.2 mile |
| Timber understory (TU5)           | Up to 5 ch/hr. Both | Up to 6 feet | Up to 0.2-mile |
| Timber litter, short needle (TL3) | Up to 1 ch/hr. East | Up to 1 feet | Up to 0.2 mile |
| Timber litter, long needle (TL8)  | Up to 3 ch/hr. East | Up to 3 feet | Up to 0.2 mile |

Warmer and drier with poor nighttime humidity recovery. Elevated fire behavior potential. Live and dead fuels are dry and available to carry fire. Continued slow fire spread in heavy surface fuels with torching and short-range spotting. The slow to moderate fire spread is smoldering, creeping, backing and flanking fire behavior. Fire spread is also through short-range spotting, Lichen reacts quickly to changes in humidity and contributes to short-range spotting. Potential still exists for short upslope runs. Areas of thick smoke may effect fire intensity.

**Haines:** 4      **LAL:** 1      **POI:** 50- 80%:      **DFDM:** 4-8%,  
**Local Thresholds for increased fire behavior on West side:** 20' Wind Speed over 10 MPH, RH less than 25%, Temperature above 85 degrees, 10-hr fuel moisture less than 4%

### Today's Fire Behavior

**DIV A, Y:** Pockets of unburned fuels will continue to consume, especially in Div. A at both ends of the division. Expect mostly smoldering and creeping and isolated torching due to heavy fuels under sheltered canopy. Potential for short upslope runs exists.

**DIV W, X:** Expect smoldering and creeping fire spread in interior unburned islands of fuels. Potential for single tree torching. In areas with steeper slopes with heavy surface loading, potential exists for short uphill runs. Expect smoldering in compact needle litter especially in riparian areas.

**DIV T:** Surface fire spread in heavy fuels with single and group torching. Potential for short upslope runs exists. Potential for spotting from rolling material in areas with steeper slopes. Potential for easterly winds to channel down Eagle Creek drainage.

**DIV R and P:** Smoldering and creeping with isolated torching in ladder fuels, especially on south aspects with slope. With variable wind direction, smoke drift may impact fire activity.

**Night Shift:** Poor nighttime humidity recovery so expect to see areas of visible flame in the mid to upper elevations. Chance of isolated torching.

**AIR OPERATIONS:** Expect limited visibility due to smoke. Strong inversion, mixing out after 1400.

### SAFETY

**Periodically take weather observations to help maintain Situational Awareness.**

**In areas of dirty burns where heat treated ladder fuels exists, potential for rapid flare ups/reburn exist.**



# SAFETY MESSAGE

12-13 October 2022

INCIDENT: CEDAR CREEK OPERATIONAL PERIOD: 0700-0700

## TOPICS:



### Highway 58 Construction

Construction continues on HWY58 between MP56 and MP70. Traffic will be reduced to one way with a pilot car throughout the day. Specific areas today include..... If you are turning onto HWY58 from a crossroad, wait for the pilot car to approach. We want to avoid driving against the one-way traffic. IF YOU SEE CONES, YOU ARE IN A ONE-WAY CONSTRUCTION ZONE.

### Extraction: SHORT HAUL

Short Haul is available to the incident. This resource is but one in your/our toolbox to provide timely extraction. Remember your number one objective is to provide treatment to a patient and get them to definitive care in an hour. Evaluate patient condition and formulate the best plan to get them to definitive care in under an hour using all the tools in the toolbox. Aviation resources are a tool, but never the center of a plan.



*The things that lead up to accidents happen slowly-The accident happens fast.*

SAFETY OFFICER: Troy Corn, Jack Cates

# Deliberate Risk Assessment-Hazard Summary

## 12-13 OCT 2022

| Hazard                                               | Mitigation                                                                                                                                                                                                                                                                                                                                                                                                                                                                                                                                                                                                                      | Post Risk |
|------------------------------------------------------|---------------------------------------------------------------------------------------------------------------------------------------------------------------------------------------------------------------------------------------------------------------------------------------------------------------------------------------------------------------------------------------------------------------------------------------------------------------------------------------------------------------------------------------------------------------------------------------------------------------------------------|-----------|
| Extraction Time                                      | Identify medivac sites and helispots. Initiate ground transport to accident site for transport capability. Identify EMT/EMTP from resources assigned to division. Provide line qualified paramedics to each division as available. Review IWI protocol to ensure familiarity. Utilize agency and civilian medivac as treatment/timing dictates. Evaluate on-going need for repositioning medical personnel. Provide Dust abatement on Helispots as needed.                                                                                                                                                                      | HIGH      |
| Aircraft                                             | Utilize Air Attack. Ensure all resources are a safe distance from all bucket and retardant drops. Establish LCES. Utilize air to ground primary for fixed wing, air to ground 2 for bucket work as needed. Reference IRPG (Safe aircraft operations pg. 61-62). Ensure IA resources have coordination with unassigned local air resources to provide deconfliction.                                                                                                                                                                                                                                                             | HIGH      |
| <b>Railroad Right-of-Way</b>                         | <b>Implement work windows/slow orders with Union Pacific when personnel are working near the right-of-way. Post lookouts at each end of work zones.</b>                                                                                                                                                                                                                                                                                                                                                                                                                                                                         | HIGH      |
| Hazard Trees                                         | Use avoidance to limit exposure time. Fall ahead to avoid exposure. Use qualified fallers or alternate methods if needed. Conduct on- going risk analysis of all work areas. Follow Hazard Tree Safety Guidelines (IRPG page 20-21).                                                                                                                                                                                                                                                                                                                                                                                            | HIGH      |
| Heavy Equipment                                      | Post lookouts around equipment work areas. Establish communications with equipment boss and operator. Do not work down slope from equipment. Follow agency guidelines for chipping operations.                                                                                                                                                                                                                                                                                                                                                                                                                                  | HIGH      |
| Physical Factors                                     | Maintain hydration schedule. Closely monitor work rate and implement rest periods. Maintain nutrition. Ensure adequate work/rest.                                                                                                                                                                                                                                                                                                                                                                                                                                                                                               | MODERATE  |
| Fire Behavior                                        | Be aware of burn windows and weather impacts and min/max RH for flashy fuels/local conditions. Report changes to FBAN and IMET. Establish MAP for disengagement to provide for an orderly retreat given lack of safety zones. Have a plan for disengagement that establishes a designated meeting point and maintains personnel accountability.                                                                                                                                                                                                                                                                                 | MODERATE  |
| Steep Terrain/Gravity                                | Establish LCES. Do not work crews above or below each other. Post lookouts for rolling material. Watch footing in loose soil, rock and around vegetation. Do not work below heavy equipment. Scout and identify travel routes.                                                                                                                                                                                                                                                                                                                                                                                                  | MODERATE  |
| Transportation                                       | <b>Coordinate with ODOT for construction windows and areas of one lane traffic along HWY58. Provide daily updates of construction progress.</b> Sign all incident roads that provide access to divisions. Provide daily updated travel plan maps. Practice defensive driving. In local communities obey the posted speed limits. Use reader boards to provide advanced warning and control entry to base camp as needed. Identify and evaluate contingency and alternate escape and travel routes. Provide dust abatement and grading as needed. Provide advanced scouting for transport access and bridge weight restrictions. | MODERATE  |
| Unburned Fuels/Firing Ops                            | Establish LCES. Ensure management action points are implemented and followed. Weather updates as needed during burning operations. Locate indirect firelines to minimize unburned fuels. Follow Interagency Ignition Guide. Ensure communications between all firing operations. Establish road security at all firing sites. Follow approved firing plan for unburned fuels.                                                                                                                                                                                                                                                   | MODERATE  |
| Environmental Factors                                | Assign medical personnel to camp. Assess for known allergies and report to medical personnel. Obtain Bee Bopper/wasp spray and yellow jacket traps. Maintain an awareness wildlife and poison oak. Identify and report allergies to your chain of command.                                                                                                                                                                                                                                                                                                                                                                      | MODERATE  |
| Communication                                        | Evaluate for dead zones prior to engagement. Utilize human repeaters as needed. Ensure accountability of resources in problem areas. Spiking resources must have communication coverage.                                                                                                                                                                                                                                                                                                                                                                                                                                        | LOW       |
| Viral Transmission Mitigations, Communicable Disease | Maintain awareness of health, perform self checks, maintain social distancing, wear face coverings in accordance with CDC recommendations. Report and isolate if not feeling well. Use remote briefings, spike camps and logistical layouts that provide for social distancing as necessary. Establish liaison with Lane County Public Health.                                                                                                                                                                                                                                                                                  | LOW       |
| Public Interaction                                   | Implement area and road closures as necessary. Maintain a lookout for hunters in and out of closure areas. Maintain awareness of evacuation areas and provide accurate information dissemination.                                                                                                                                                                                                                                                                                                                                                                                                                               | LOW       |
| Initial Attack                                       | Ensure identified IA resources are briefed of expectations and ensure communication plan is provided. Ensure resources are briefed on IA command structure. Provide identified crews with area maps.                                                                                                                                                                                                                                                                                                                                                                                                                            | LOW       |



**Division/Group Assignment List (ICS 204 WF)**  
**Controlled Unclassified Information//Basic**

|                                                                                                                                                                                                                                                                                                                            |         |                                      |                                             |                                       |                       |                                  |
|----------------------------------------------------------------------------------------------------------------------------------------------------------------------------------------------------------------------------------------------------------------------------------------------------------------------------|---------|--------------------------------------|---------------------------------------------|---------------------------------------|-----------------------|----------------------------------|
| <b>1. Incident Name:</b>                                                                                                                                                                                                                                                                                                   |         |                                      | <b>3.</b>                                   |                                       |                       |                                  |
| CEDAR CREEK                                                                                                                                                                                                                                                                                                                |         |                                      | <b>Branch:</b>                              |                                       | <b>Division/Group</b> |                                  |
| <b>2. Operational Period: DAY</b>                                                                                                                                                                                                                                                                                          |         |                                      | <b>WEST</b>                                 |                                       | <b>A</b>              |                                  |
| Date/Time From:<br>10/12/2022 0700 WED                                                                                                                                                                                                                                                                                     |         | Date/Time To:<br>10/12/2022 2000 WED |                                             |                                       |                       |                                  |
| <b>4. Operations Personnel</b>                                                                                                                                                                                                                                                                                             |         |                                      |                                             |                                       |                       |                                  |
| <b>FIELD OPERATIONS</b>                                                                                                                                                                                                                                                                                                    |         | AARON ROWE<br>MIKE DAVIS (T)         |                                             | <b>BRANCH DIRECTOR</b>                |                       | AARON ROWE<br>HECTOR MEDRANO (T) |
| <b>DIVISION/GROUP SUPERVISOR</b>                                                                                                                                                                                                                                                                                           |         | ISAAH SALSKY                         |                                             | <b>AIR OPERATIONS BRANCH DIRECTOR</b> |                       | PAUL BALFOUR                     |
| <b>SAFETY OFFICER</b>                                                                                                                                                                                                                                                                                                      |         | TROY CORN<br>JACK CATES              |                                             |                                       |                       |                                  |
| <b>5. Resources Assigned this Period</b>                                                                                                                                                                                                                                                                                   |         |                                      |                                             |                                       |                       |                                  |
| Strike Team / Task Force /<br>Resource Designator                                                                                                                                                                                                                                                                          |         | LWD                                  | Leader                                      | Number<br>Persons                     | Drop Off PT./Time     | Pick Up PT./Time                 |
| O-1054 SOF2                                                                                                                                                                                                                                                                                                                |         | 10/21                                | PAUL BRNA                                   | 1                                     | ICP/0700              | ICP/2000                         |
| O-1008 HEQB                                                                                                                                                                                                                                                                                                                |         | 10/15                                | SETH POWELL                                 | 1                                     | ICP/0700              | ICP/2000                         |
| E-567 ENG6 FIRST STRIKE                                                                                                                                                                                                                                                                                                    |         | 10/16                                | SPENCER BERLIER                             | 3                                     | ICP/0700              | ICP/2000                         |
| E-590 ENG6 DIAMOND ROAD MAINTENANCE                                                                                                                                                                                                                                                                                        |         | 10/21                                | TYLER DWER                                  | 3                                     | ICP/0700              | ICP/2000                         |
| E-554 WTT2 PARAGON WATER TENDERS                                                                                                                                                                                                                                                                                           |         | 10/23                                | BILL POTTS                                  | 1                                     | ICP/0700              | ICP/2000                         |
| E-558 EXC3 V WORKS, INC                                                                                                                                                                                                                                                                                                    |         | 10/14                                | JEREMY LINDSTROM                            | 2                                     | ICP/0700              | ICP/2000                         |
| O-1039 REAF (T)                                                                                                                                                                                                                                                                                                            |         | 10/18                                | SUNYA INCE-JOHANNSEN                        | 1                                     | ICP/0700              | ICP/2000                         |
| O-1060 REAF                                                                                                                                                                                                                                                                                                                |         | 10/16                                | MARK LEHNER                                 | 1                                     | ICP/0700              | ICP/2000                         |
| S-1333 MEDIC 34                                                                                                                                                                                                                                                                                                            |         | 10/14                                | CHANDLER LEFEVER                            | 2                                     | ICP/0700              | ICP/2000                         |
| E-99 AMBULANCE 1                                                                                                                                                                                                                                                                                                           |         | 10/21                                | SHELBY WHITE                                | 2                                     | ICP/0700              | ICP/2000                         |
| <b>6. Control Operations/Work Assignments:</b>                                                                                                                                                                                                                                                                             |         |                                      |                                             |                                       |                       |                                  |
| Task: Conduct suppression repair on the 305, 310, and 750 roads. Monitor, patrol, and mop up both direct and indirect primary control lines.                                                                                                                                                                               |         |                                      |                                             |                                       |                       |                                  |
| Purpose: Return roads to previous maintenance standard. Secure fire edge on the 19 and 1938 roads.                                                                                                                                                                                                                         |         |                                      |                                             |                                       |                       |                                  |
| End State: Roads are returned to pre-fire conditions. Fifty feet of mop-up complete where clean black exists.                                                                                                                                                                                                              |         |                                      |                                             |                                       |                       |                                  |
| <b>7. Special Instructions:</b>                                                                                                                                                                                                                                                                                            |         |                                      |                                             |                                       |                       |                                  |
| <ul style="list-style-type: none"> <li>• Be IA ready - See IA Communication Plan for Initial Attack.</li> <li>• Areas to be avoided are marked with either black/yellow or red dot on white flagging.</li> <li>• Consult Resource Advisors if you have any questions.</li> <li>• Backhaul all excess equipment.</li> </ul> |         |                                      |                                             |                                       |                       |                                  |
| <b>8. Division/Group Communication Summary</b>                                                                                                                                                                                                                                                                             |         |                                      |                                             |                                       |                       |                                  |
| Function                                                                                                                                                                                                                                                                                                                   | Channel | RX Frequency N/W                     | RX Tone/NAC                                 | TX Frequency N/W                      | TX Tone/NAC           | Mode                             |
| COMMAND                                                                                                                                                                                                                                                                                                                    | 1       | 170.0000 N                           | 136.5                                       | 166.6750 N                            | 136.5                 | A                                |
| COMMAND                                                                                                                                                                                                                                                                                                                    | 4       | 171.9000 N                           | 136.5                                       | 165.9875 N                            | 136.5                 | A                                |
| TACTICAL                                                                                                                                                                                                                                                                                                                   | 8       | 168.6000 N                           | 136.5                                       | 168.6000 N                            | 136.5                 | A                                |
| AIR TO GROUND                                                                                                                                                                                                                                                                                                              | 13      | 168.3375 N                           |                                             | 168.3375 N                            |                       | A                                |
| AIR TO GROUND                                                                                                                                                                                                                                                                                                              | 14      | 169.4625 N                           |                                             | 169.4625 N                            |                       | A                                |
| <b>9. Prepared By (Resource Unit Leader)</b>                                                                                                                                                                                                                                                                               |         |                                      | <b>Approved By (Planning Section Chief)</b> |                                       | <b>Date</b>           | <b>Time</b>                      |
| TERI PARVIN                                                                                                                                                                                                                                                                                                                |         |                                      | JILL JOHNSON                                |                                       | 10/11/2022            | 2000                             |

**Division/Group Assignment List (ICS 204 WF)**  
**Controlled Unclassified Information//Basic**

|                                                |                              |                                      |                                             |                                       |                                  |             |
|------------------------------------------------|------------------------------|--------------------------------------|---------------------------------------------|---------------------------------------|----------------------------------|-------------|
| <b>1. Incident Name:</b>                       |                              |                                      |                                             | <b>3.</b>                             |                                  |             |
| CEDAR CREEK                                    |                              |                                      |                                             | <b>Branch:</b><br><br>WEST            | <b>Division/Group</b><br><br>T   |             |
| <b>2. Operational Period: DAY</b>              |                              |                                      |                                             |                                       |                                  |             |
| Date/Time From:<br>10/12/2022 0700 WED         |                              | Date/Time To:<br>10/12/2022 2000 WED |                                             |                                       |                                  |             |
| <b>4. Operations Personnel</b>                 |                              |                                      |                                             |                                       |                                  |             |
| <b>FIELD OPERATIONS</b>                        | AARON ROWE<br>MIKE DAVIS (T) |                                      |                                             | <b>BRANCH DIRECTOR</b>                | AARON ROWE<br>HECTOR MEDRANO (T) |             |
| <b>DIVISION/GROUP SUPERVISOR</b>               | SAM STEINSHOUER              |                                      |                                             | <b>AIR OPERATIONS BRANCH DIRECTOR</b> | PAUL BALFOUR                     |             |
| <b>SAFETY OFFICER</b>                          | TROY CORN<br>JACK CATES      |                                      |                                             |                                       |                                  |             |
| <b>5. Resources Assigned this Period</b>       |                              |                                      |                                             |                                       |                                  |             |
| Strike Team / Task Force / Resource Designator | LWD                          | Leader                               | Number Persons                              | Drop Off PT./Time                     | Pick Up PT./Time                 |             |
| O-1055 SOF2                                    | 10/19                        | MITCH WILSON                         | 1                                           | ICP/0700                              | ICP/2000                         |             |
| O-905 TFLD                                     | 10/12                        | TED PIEHL                            | 1                                           | ICP/0700                              | ICP/2000                         |             |
| O-983 TFLD                                     | 10/12                        | PAUL BASYE                           | 1                                           | ICP/0700                              | ICP/2000                         |             |
| O-1086 STEN                                    | 10/22                        | ERIC KIEHN                           | 1                                           | ICP/0700                              | ICP/2000                         |             |
| O-1077 FELB                                    | 10/22                        | MIKE HENDERSON                       | 1                                           | ICP/0700                              | ICP/2000                         |             |
| O-1046 FMOD PACIFIC RIDGELINE                  | 10/18                        | ADAM MILLER                          | 2                                           | ICP/0700                              | ICP/2000                         |             |
| O-1075 FMOD TIRY TUDOR                         | 10/21                        | JOSH TUDOR                           | 1                                           | ICP/0700                              | ICP/2000                         |             |
| O-1076 FMOD TIMBER TIPPER                      | 10/21                        | BRANDON DANVILLE                     | 2                                           | ICP/0700                              | ICP/2000                         |             |
| O-5057 FMOD TIMBER TIPPER                      | 10/19                        | GERALD FLOYD                         | 2                                           | ICP/0700                              | ICP/2000                         |             |
| C-123 CRW1 PLUMAS IHC                          | 10/20                        | MIKE SHERMAN                         | 18                                          | ICP/0700                              | ICP/2000                         |             |
| C-125 CRW1 ENTIAT IHC                          | 10/15                        | DANIEL PICKARD                       | 23                                          | ICP/0700                              | ICP/2000                         |             |
| C-126 CRW1 FEATHER RIVER IHC                   | 10/22                        | MATT CLEMINS                         | 23                                          | ICP/0700                              | ICP/2000                         |             |
| C-120 CRW2 LOMAKSTSI ECOLOGICAL                | 10/21                        | BRAULIO MAYA                         | 20                                          | ICP/0700                              | ICP/2000                         |             |
| C-121 CRW2 WILL VALLEY REFORES. CREW 3         | 10/23                        | LAZARO MONTANO                       | 20                                          | ICP/0700                              | ICP/2000                         |             |
| C-122 CR2I SRV #12                             | 10/22                        | JULIAN I JACOBO                      | 21                                          | ICP/0700                              | ICP/2000                         |             |
| C-127 CR2I PATRICK ENV                         | 10/21                        | DUSTIN DUFFY                         | 20                                          | ICP/0700                              | ICP/2000                         |             |
| <b>8. Division/Group Communication Summary</b> |                              |                                      |                                             |                                       |                                  |             |
| Function                                       | Channel                      | RX Frequency N/W                     | RX Tone/NAC                                 | TX Frequency N/W                      | TX Tone/NAC                      | Mode        |
| COMMAND                                        | 2                            | 170.6875 N                           | 136.5                                       | 166.5750 N                            | 136.5                            | A           |
| COMMAND                                        | 3                            | 171.0625 N                           | 136.5                                       | 162.8125 N                            | 136.5                            | A           |
| TACTICAL                                       | 9                            | 166.7250 N                           | 136.5                                       | 166.7250 N                            | 136.5                            | A           |
| AIR TO GROUND                                  | 13                           | 168.3375 N                           |                                             | 168.3375 N                            |                                  | A           |
| AIR TO GROUND                                  | 14                           | 169.4625 N                           |                                             | 169.4625 N                            |                                  | A           |
| <b>9. Prepared By (Resource Unit Leader)</b>   |                              |                                      | <b>Approved By (Planning Section Chief)</b> |                                       | <b>Date</b>                      | <b>Time</b> |
| TERI PARVIN                                    |                              |                                      | JILL JOHNSON                                |                                       | 10/11/2022                       | 2000        |

**Division/Group Assignment List (ICS 204 WF)**  
**Controlled Unclassified Information//Basic**

|                                                |                              |                                      |                                             |                                       |                                  |             |
|------------------------------------------------|------------------------------|--------------------------------------|---------------------------------------------|---------------------------------------|----------------------------------|-------------|
| <b>1. Incident Name:</b>                       |                              |                                      |                                             | <b>3.</b>                             |                                  |             |
| CEDAR CREEK                                    |                              |                                      |                                             | <b>Branch:</b><br><br>WEST            | <b>Division/Group</b><br><br>T   |             |
| <b>2. Operational Period: DAY</b>              |                              |                                      |                                             |                                       |                                  |             |
| Date/Time From:<br>10/12/2022 0700 WED         |                              | Date/Time To:<br>10/12/2022 2000 WED |                                             |                                       |                                  |             |
| <b>4. Operations Personnel</b>                 |                              |                                      |                                             |                                       |                                  |             |
| <b>FIELD OPERATIONS</b>                        | AARON ROWE<br>MIKE DAVIS (T) |                                      |                                             | <b>BRANCH DIRECTOR</b>                | AARON ROWE<br>HECTOR MEDRANO (T) |             |
| <b>DIVISION/GROUP SUPERVISOR</b>               | SAM STEINSHOUER              |                                      |                                             | <b>AIR OPERATIONS BRANCH DIRECTOR</b> | PAUL BALFOUR                     |             |
| <b>SAFETY OFFICER</b>                          | TROY CORN<br>JACK CATES      |                                      |                                             |                                       |                                  |             |
| <b>5. Resources Assigned this Period</b>       |                              |                                      |                                             |                                       |                                  |             |
| Strike Team / Task Force / Resource Designator | LWD                          | Leader                               | Number Persons                              | Drop Off PT./Time                     | Pick Up PT./Time                 |             |
| C-128 CR2I PACIFIC OASIS 14A                   | 10/22                        | JASON MAZA                           | 20                                          | ICP/0700                              | ICP/2000                         |             |
| C-134 CR2I GRAYBACK FORESTRY NCC 16A           | 10/25                        | CHRIS UNIACK                         | 20                                          | ICP/0700                              | ICP/2000                         |             |
| E-573 ENG3 CA-CNF E328                         | 10/20                        | ARTHUR BUONAURO                      | 5                                           | ICP/0700                              | ICP/2000                         |             |
| E-592 ENG3 FIREMOG                             | 10/21                        | MIKE PARENT                          | 6                                           | ICP/0700                              | ICP/2000                         |             |
| E-588 ENG6 MILLER TIMBER                       | 10/22                        | STEVE ROBERTSON                      | 3                                           | ICP/0700                              | ICP/2000                         |             |
| E-569 ENG6 FRANCO REFORESTATION                | 10/13                        | HUMBERTO CHOY                        | 3                                           | ICP/0700                              | ICP/2000                         |             |
| E-589 ENG6 FENIX FORESTRY                      | 10/21                        | SUZANNE FLYNN                        | 3                                           | ICP/0700                              | ICP/2000                         |             |
| E-591 ENG6 C & K WILDLAND FIRE                 | 10/21                        | GREG NELSON                          | 3                                           | ICP/0700                              | ICP/2000                         |             |
| E-593 ENG3 J3 CONTRACTING                      | 10/21                        | STEWART NICHOLS                      | 3                                           | ICP/0700                              | ICP/2000                         |             |
| ENG4 452 WIF MFRD (L/L)                        |                              | BRIAN BRADBURY                       | 4                                           | ICP/0700                              | ICP/2000                         |             |
| ENG4 454 WIL MFRD (L/L)                        |                              | JOHN CAROON                          | 4                                           | ICP/0700                              | ICP/2000                         |             |
| E-553 WTT2 COASTAL RANGE FIRE SUPPORT          | 10/26                        | SEAN BOEHLJE                         | 1                                           | R&R 10/11-12/                         |                                  |             |
| E-159 WTT2 BELLOIR & SONS                      | 10/18                        | ROGER BELLOIR                        | 1                                           | ICP/0700                              | ICP/2000                         |             |
| E-5008 WTS2 TUB SPRINGS EQUIPMENT              | 10/13                        | JOHN MACNAMEE                        | 1                                           | ICP/0700                              | ICP/2000                         |             |
| E-5109 WTS2 WILLOW CANYON TRUCKING             | 10/21                        | JOHN BARRETT                         | 1                                           | ICP/0700                              | ICP/2000                         |             |
| E-5518 WTS2 R25 ENTERPRISES                    | 10/23                        | RON HAGENAUER                        | 1                                           | ICP/0700                              | ICP/2000                         |             |
| <b>8. Division/Group Communication Summary</b> |                              |                                      |                                             |                                       |                                  |             |
| Function                                       | Channel                      | RX Frequency N/W                     | RX Tone/NAC                                 | TX Frequency N/W                      | TX Tone/NAC                      | Mode        |
| COMMAND                                        | 2                            | 170.6875 N                           | 136.5                                       | 166.5750 N                            | 136.5                            | A           |
| COMMAND                                        | 3                            | 171.0625 N                           | 136.5                                       | 162.8125 N                            | 136.5                            | A           |
| TACTICAL                                       | 9                            | 166.7250 N                           | 136.5                                       | 166.7250 N                            | 136.5                            | A           |
| AIR TO GROUND                                  | 13                           | 168.3375 N                           |                                             | 168.3375 N                            |                                  | A           |
| AIR TO GROUND                                  | 14                           | 169.4625 N                           |                                             | 169.4625 N                            |                                  | A           |
| <b>9. Prepared By (Resource Unit Leader)</b>   |                              |                                      | <b>Approved By (Planning Section Chief)</b> |                                       | <b>Date</b>                      | <b>Time</b> |
| TERI PARVIN                                    |                              |                                      | JILL JOHNSON                                |                                       | 10/11/2022                       | 2000        |

**Division/Group Assignment List (ICS 204 WF)**  
**Controlled Unclassified Information//Basic**

|                                                |         |                              |                                             |                                       |                |                                  |                  |
|------------------------------------------------|---------|------------------------------|---------------------------------------------|---------------------------------------|----------------|----------------------------------|------------------|
| <b>1. Incident Name:</b>                       |         |                              |                                             | <b>3.</b>                             |                |                                  |                  |
| CEDAR CREEK                                    |         |                              |                                             | <b>Branch:</b>                        |                | <b>Division/Group</b>            |                  |
| <b>2. Operational Period: DAY</b>              |         |                              |                                             | <b>WEST</b>                           |                | <b>T</b>                         |                  |
| Date/Time From:<br>10/12/2022 0700             |         | WED                          |                                             | Date/Time To:<br>10/12/2022 2000      |                | WED                              |                  |
| <b>4. Operations Personnel</b>                 |         |                              |                                             |                                       |                |                                  |                  |
| <b>FIELD OPERATIONS</b>                        |         | AARON ROWE<br>MIKE DAVIS (T) |                                             | <b>BRANCH DIRECTOR</b>                |                | AARON ROWE<br>HECTOR MEDRANO (T) |                  |
| <b>DIVISION/GROUP SUPERVISOR</b>               |         | SAM STEINSHOUER              |                                             | <b>AIR OPERATIONS BRANCH DIRECTOR</b> |                | PAUL BALFOUR                     |                  |
| <b>SAFETY OFFICER</b>                          |         | TROY CORN<br>JACK CATES      |                                             |                                       |                |                                  |                  |
| <b>5. Resources Assigned this Period</b>       |         |                              |                                             |                                       |                |                                  |                  |
| Strike Team / Task Force / Resource Designator |         |                              | LWD                                         | Leader                                | Number Persons | Drop Off PT./Time                | Pick Up PT./Time |
| DOZ3 NEWBERRY DES NF (L/L)                     |         |                              |                                             |                                       | 1              | ICP/0700                         | ICP/2000         |
| E-586 DOZ3 ROBERT MURRAY                       |         |                              | 10/21                                       | KENNY MURRAY                          | 2              | ICP/0700                         | ICP/2000         |
| E-606 DZR2 BARRY BROWN INC                     |         |                              | 10/23                                       | BARRY BROWN                           | 2              | ICP/0700                         | ICP/2000         |
| E-607 DZR2 MILLER TIMBER SERVICES              |         |                              | 10/25                                       | DUSTIN FORTADO                        | 2              | ICP/0700                         | ICP/2000         |
| E-5462 SMM1 BRINK BROTHERS INC.                |         |                              | 10/19                                       | MATT SAYLES                           | 1              | ICP/0700                         | ICP/2000         |
| E-5238 SMM3 HACKER MACHINES                    |         |                              | 10/14                                       | CHRIS HACKER                          | 2              | ICP/0700                         | ICP/2000         |
| E-608 SKG1 MILLER TIMBER SERVICES              |         |                              | 10/24                                       | MARK BOND                             | 1              | ICP/0700                         | ICP/2000         |
| E-609 SKG2 OUTBACK WILDFIRE                    |         |                              | 10/25                                       | TODD HALEY                            | 2              | ICP/0700                         | ICP/2000         |
| E-570 SKD2 BREEZE BY FIRE                      |         |                              | 10/17                                       | CALEB JOCK                            | 2              | ICP/0700                         | ICP/2000         |
| E-5078 SKD2 RIM ROCK                           |         |                              | 10/26                                       | MATTHEW PAINTER                       | 2              | ICP/0700                         | ICP/2000         |
| E-5079 SKD2 STATEWIDE CONTRACT SERV            |         |                              | 10/24                                       | RYAN STEPP                            | 1              | ICP/0700                         | ICP/2000         |
| E-355 FEL1 DUKE                                |         |                              | 10/18                                       | JUSTIN DARSTIN                        | 2              | ICP/0700                         | ICP/2000         |
| E-5019 FEL1 TJS CUTTING                        |         |                              | 10/17                                       | AUSTIN SEEKINS                        | 2              | ICP/0700                         | ICP/2000         |
| O-267 REAF (T)                                 |         |                              | 10/24                                       | BRESA MARTIN                          | 1              | ICP/0700                         | ICP/2000         |
| O-1132 ARCH                                    |         |                              | 10/25                                       | MOLLY A RAY                           | 1              | ICP/0700                         | ICP/2000         |
| <b>8. Division/Group Communication Summary</b> |         |                              |                                             |                                       |                |                                  |                  |
| Function                                       | Channel | RX Frequency N/W             | RX Tone/NAC                                 | TX Frequency N/W                      | TX Tone/NAC    | Mode                             |                  |
| COMMAND                                        | 2       | 170.6875 N                   | 136.5                                       | 166.5750 N                            | 136.5          | A                                |                  |
| COMMAND                                        | 3       | 171.0625 N                   | 136.5                                       | 162.8125 N                            | 136.5          | A                                |                  |
| TACTICAL                                       | 9       | 166.7250 N                   | 136.5                                       | 166.7250 N                            | 136.5          | A                                |                  |
| AIR TO GROUND                                  | 13      | 168.3375 N                   |                                             | 168.3375 N                            |                | A                                |                  |
| AIR TO GROUND                                  | 14      | 169.4625 N                   |                                             | 169.4625 N                            |                | A                                |                  |
| <b>9. Prepared By (Resource Unit Leader)</b>   |         |                              | <b>Approved By (Planning Section Chief)</b> |                                       |                | <b>Date</b>                      | <b>Time</b>      |
| TERI PARVIN                                    |         |                              | JILL JOHNSON                                |                                       |                | 10/11/2022                       | 2000             |



**Division/Group Assignment List (ICS 204 WF)**  
**Controlled Unclassified Information//Basic**

|                                                                                                                                                                                                                                                                                                                            |         |                                      |                                             |                                       |                       |                                  |
|----------------------------------------------------------------------------------------------------------------------------------------------------------------------------------------------------------------------------------------------------------------------------------------------------------------------------|---------|--------------------------------------|---------------------------------------------|---------------------------------------|-----------------------|----------------------------------|
| <b>1. Incident Name:</b>                                                                                                                                                                                                                                                                                                   |         |                                      | <b>3.</b>                                   |                                       |                       |                                  |
| CEDAR CREEK                                                                                                                                                                                                                                                                                                                |         |                                      | <b>Branch:</b>                              |                                       | <b>Division/Group</b> |                                  |
| <b>2. Operational Period: DAY</b>                                                                                                                                                                                                                                                                                          |         |                                      | WEST                                        |                                       | T                     |                                  |
| Date/Time From:<br>10/12/2022 0700 WED                                                                                                                                                                                                                                                                                     |         | Date/Time To:<br>10/12/2022 2000 WED |                                             |                                       |                       |                                  |
| <b>4. Operations Personnel</b>                                                                                                                                                                                                                                                                                             |         |                                      |                                             |                                       |                       |                                  |
| <b>FIELD OPERATIONS</b>                                                                                                                                                                                                                                                                                                    |         | AARON ROWE<br>MIKE DAVIS (T)         |                                             | <b>BRANCH DIRECTOR</b>                |                       | AARON ROWE<br>HECTOR MEDRANO (T) |
| <b>DIVISION/GROUP SUPERVISOR</b>                                                                                                                                                                                                                                                                                           |         | SAM STEINSHOUER                      |                                             | <b>AIR OPERATIONS BRANCH DIRECTOR</b> |                       | PAUL BALFOUR                     |
| <b>SAFETY OFFICER</b>                                                                                                                                                                                                                                                                                                      |         | TROY CORN<br>JACK CATES              |                                             |                                       |                       |                                  |
| <b>5. Resources Assigned this Period</b>                                                                                                                                                                                                                                                                                   |         |                                      |                                             |                                       |                       |                                  |
| Strike Team / Task Force / Resource Designator                                                                                                                                                                                                                                                                             |         | LWD                                  | Leader                                      | Number Persons                        | Drop Off PT./Time     | Pick Up PT./Time                 |
| S-1334 MEDIC 35                                                                                                                                                                                                                                                                                                            |         | 10/17                                | SAVION SOLEIL                               | 2                                     | ICP/0700              | ICP/2000                         |
| O-939.3 MEDIC ONTKO                                                                                                                                                                                                                                                                                                        |         | 10/16                                | NECOLE ONTKO (T)                            | 1                                     | ICP/0700              | ICP/2000                         |
| O-987 BLS 55                                                                                                                                                                                                                                                                                                               |         | 10/14                                | SAGE LYFORD                                 | 1                                     | ICP/0700              | ICP/2000                         |
| E-257 AMBULANCE 3                                                                                                                                                                                                                                                                                                          |         | 10/17                                | AYALA RAHM                                  | 2                                     | ICP/0700              | ICP/2000                         |
| <b>6. Control Operations/Work Assignments:</b>                                                                                                                                                                                                                                                                             |         |                                      |                                             |                                       |                       |                                  |
| Task: Continue to hold and secure control lines. Secure fire edge south of DP87 and DP89. Recon for potential control areas northwest of Fuji and Eagle Creek.                                                                                                                                                             |         |                                      |                                             |                                       |                       |                                  |
| Purpose: To protect values at risk in the community of Oakridge and Hwy 58 corridor.                                                                                                                                                                                                                                       |         |                                      |                                             |                                       |                       |                                  |
| End State: Keep fire north of the Hwy 58, east of Mount David Douglas, and west of Fuji Mountain                                                                                                                                                                                                                           |         |                                      |                                             |                                       |                       |                                  |
| <b>7. Special Instructions:</b>                                                                                                                                                                                                                                                                                            |         |                                      |                                             |                                       |                       |                                  |
| <ul style="list-style-type: none"> <li>• Be IA ready - See IA Communication Plan for Initial Attack.</li> <li>• Areas to be avoided are marked with either black/yellow or red dot on white flagging.</li> <li>• Consult Resource Advisors if you have any questions.</li> <li>• Backhaul all excess equipment.</li> </ul> |         |                                      |                                             |                                       |                       |                                  |
| <b>8. Division/Group Communication Summary</b>                                                                                                                                                                                                                                                                             |         |                                      |                                             |                                       |                       |                                  |
| Function                                                                                                                                                                                                                                                                                                                   | Channel | RX Frequency N/W                     | RX Tone/NAC                                 | TX Frequency N/W                      | TX Tone/NAC           | Mode                             |
| COMMAND                                                                                                                                                                                                                                                                                                                    | 2       | 170.6875 N                           | 136.5                                       | 166.5750 N                            | 136.5                 | A                                |
| COMMAND                                                                                                                                                                                                                                                                                                                    | 3       | 171.0625 N                           | 136.5                                       | 162.8125 N                            | 136.5                 | A                                |
| TACTICAL                                                                                                                                                                                                                                                                                                                   | 9       | 166.7250 N                           | 136.5                                       | 166.7250 N                            | 136.5                 | A                                |
| AIR TO GROUND                                                                                                                                                                                                                                                                                                              | 13      | 168.3375 N                           |                                             | 168.3375 N                            |                       | A                                |
| AIR TO GROUND                                                                                                                                                                                                                                                                                                              | 14      | 169.4625 N                           |                                             | 169.4625 N                            |                       | A                                |
| <b>9. Prepared By (Resource Unit Leader)</b>                                                                                                                                                                                                                                                                               |         |                                      | <b>Approved By (Planning Section Chief)</b> |                                       | <b>Date</b>           | <b>Time</b>                      |
| TERI PARVIN                                                                                                                                                                                                                                                                                                                |         |                                      | JILL JOHNSON                                |                                       | 10/11/2022            | 2000                             |

**Division/Group Assignment List (ICS 204 WF)**  
**Controlled Unclassified Information//Basic**

|                                                                                                                                                                                                                                                                                                                            |         |                                      |                                             |                                       |                       |                                  |
|----------------------------------------------------------------------------------------------------------------------------------------------------------------------------------------------------------------------------------------------------------------------------------------------------------------------------|---------|--------------------------------------|---------------------------------------------|---------------------------------------|-----------------------|----------------------------------|
| <b>1. Incident Name:</b>                                                                                                                                                                                                                                                                                                   |         |                                      | <b>3.</b>                                   |                                       |                       |                                  |
| CEDAR CREEK                                                                                                                                                                                                                                                                                                                |         |                                      | <b>Branch:</b>                              |                                       | <b>Division/Group</b> |                                  |
| <b>2. Operational Period: DAY</b>                                                                                                                                                                                                                                                                                          |         |                                      | <b>WEST</b>                                 |                                       | <b>W</b>              |                                  |
| Date/Time From:<br>10/12/2022 0700 WED                                                                                                                                                                                                                                                                                     |         | Date/Time To:<br>10/12/2022 2000 WED |                                             |                                       |                       |                                  |
| <b>4. Operations Personnel</b>                                                                                                                                                                                                                                                                                             |         |                                      |                                             |                                       |                       |                                  |
| <b>FIELD OPERATIONS</b>                                                                                                                                                                                                                                                                                                    |         | AARON ROWE<br>MIKE DAVIS (T)         |                                             | <b>BRANCH DIRECTOR</b>                |                       | AARON ROWE<br>HECTOR MEDRANO (T) |
| <b>DIVISION/GROUP SUPERVISOR</b>                                                                                                                                                                                                                                                                                           |         | BOB HINDS                            |                                             | <b>AIR OPERATIONS BRANCH DIRECTOR</b> |                       | PAUL BALFOUR                     |
| <b>SAFETY OFFICER</b>                                                                                                                                                                                                                                                                                                      |         | TROY CORN<br>JACK CATES              |                                             |                                       |                       |                                  |
| <b>5. Resources Assigned this Period</b>                                                                                                                                                                                                                                                                                   |         |                                      |                                             |                                       |                       |                                  |
| Strike Team / Task Force / Resource Designator                                                                                                                                                                                                                                                                             |         | LWD                                  | Leader                                      | Number Persons                        | Drop Off PT./Time     | Pick Up PT./Time                 |
| O-1054 SOF2                                                                                                                                                                                                                                                                                                                |         | 10/21                                | PAUL BRNA                                   | 1                                     | ICP/0700              | ICP/2000                         |
| O-984 TFLD                                                                                                                                                                                                                                                                                                                 |         | 10/12                                | DREW DINGMANN                               | 1                                     | ICP/0700              | ICP/2000                         |
| E-576 ENG6 J.C. OROZCO                                                                                                                                                                                                                                                                                                     |         | 10/19                                | JAVIER OROZCO                               | 3                                     | ICP/0700              | ICP/2000                         |
| O-1080 REAF                                                                                                                                                                                                                                                                                                                |         | 10/24                                | RYAN MURDOFF                                | 1                                     | ICP/0700              | ICP/2000                         |
| O-1031 THSP                                                                                                                                                                                                                                                                                                                |         | 10/15                                | JUSTIN GEERTSEN                             | 1                                     | ICP/0700              | ICP/2000                         |
| S-279 REMS 1                                                                                                                                                                                                                                                                                                               |         | 10/21                                | TIM MCDANIEL                                | 4                                     | ICP/0700              | ICP/2000                         |
| <b>6. Control Operations/Work Assignments:</b>                                                                                                                                                                                                                                                                             |         |                                      |                                             |                                       |                       |                                  |
| <p><b>Task:</b> Continue to secure control lines.</p> <p><b>Purpose:</b> To protect values at risk in community of Oakridge and HWY 58.</p> <p><b>End State:</b> Keep fire north of railroad and the 352 and 353 roads.</p>                                                                                                |         |                                      |                                             |                                       |                       |                                  |
| <b>7. Special Instructions:</b>                                                                                                                                                                                                                                                                                            |         |                                      |                                             |                                       |                       |                                  |
| <ul style="list-style-type: none"> <li>• Be IA ready - See IA Communication Plan for Initial Attack.</li> <li>• Areas to be avoided are marked with either black/yellow or red dot on white flagging.</li> <li>• Consult Resource Advisors if you have any questions.</li> <li>• Backhaul all excess equipment.</li> </ul> |         |                                      |                                             |                                       |                       |                                  |
| <b>8. Division/Group Communication Summary</b>                                                                                                                                                                                                                                                                             |         |                                      |                                             |                                       |                       |                                  |
| Function                                                                                                                                                                                                                                                                                                                   | Channel | RX Frequency N/W                     | RX Tone/NAC                                 | TX Frequency N/W                      | TX Tone/NAC           | Mode                             |
| COMMAND                                                                                                                                                                                                                                                                                                                    | 2       | 170.6875 N                           | 136.5                                       | 166.5750 N                            | 136.5                 | A                                |
| TACTICAL                                                                                                                                                                                                                                                                                                                   | 10      | 166.7750 N                           | 136.5                                       | 166.7750 N                            | 136.5                 | A                                |
| AIR TO GROUND                                                                                                                                                                                                                                                                                                              | 13      | 168.3375 N                           |                                             | 168.3375 N                            |                       | A                                |
| AIR TO GROUND                                                                                                                                                                                                                                                                                                              | 14      | 169.4625 N                           |                                             | 169.4625 N                            |                       | A                                |
| <b>9. Prepared By (Resource Unit Leader)</b>                                                                                                                                                                                                                                                                               |         |                                      | <b>Approved By (Planning Section Chief)</b> |                                       | <b>Date</b>           | <b>Time</b>                      |
| TERI PARVIN                                                                                                                                                                                                                                                                                                                |         |                                      | JILL JOHNSON                                |                                       | 10/11/2022            | 2000                             |

**Division/Group Assignment List (ICS 204 WF)**  
**Controlled Unclassified Information//Basic**

|                                                |                              |                                      |                                             |                                       |                                  |             |
|------------------------------------------------|------------------------------|--------------------------------------|---------------------------------------------|---------------------------------------|----------------------------------|-------------|
| <b>1. Incident Name:</b>                       |                              |                                      |                                             | <b>3.</b>                             |                                  |             |
| CEDAR CREEK                                    |                              |                                      |                                             | <b>Branch:</b><br><br>WEST            | <b>Division/Group</b><br><br>X   |             |
| <b>2. Operational Period: DAY</b>              |                              |                                      |                                             |                                       |                                  |             |
| Date/Time From:<br>10/12/2022 0700 WED         |                              | Date/Time To:<br>10/12/2022 2000 WED |                                             |                                       |                                  |             |
| <b>4. Operations Personnel</b>                 |                              |                                      |                                             |                                       |                                  |             |
| <b>FIELD OPERATIONS</b>                        | AARON ROWE<br>MIKE DAVIS (T) |                                      |                                             | <b>BRANCH DIRECTOR</b>                | AARON ROWE<br>HECTOR MEDRANO (T) |             |
| <b>DIVISION/GROUP SUPERVISOR</b>               | DENNIS MAWHINNEY             |                                      |                                             | <b>AIR OPERATIONS BRANCH DIRECTOR</b> | PAUL BALFOUR                     |             |
| <b>SAFETY OFFICER</b>                          | TROY CORN<br>JACK CATES      |                                      |                                             |                                       |                                  |             |
| <b>5. Resources Assigned this Period</b>       |                              |                                      |                                             |                                       |                                  |             |
| Strike Team / Task Force / Resource Designator | LWD                          | Leader                               | Number Persons                              | Drop Off PT./Time                     | Pick Up PT./Time                 |             |
| O-1054 SOF2                                    | 10/21                        | PAUL BRNA                            | 1                                           | ICP/0700                              | ICP/2000                         |             |
| O-1021 TFLD                                    | 10/18                        | COLIN GUNDLE                         | 1                                           | ICP/0700                              | ICP/2000                         |             |
| O-1036 TFLD (T)                                | 10/18                        | MICHAEL GREGORY                      | 1                                           | ICP/0700                              | ICP/2000                         |             |
| O-982 HEQB                                     | 10/13                        | TOBY BAKOS                           | 1                                           | ICP/0700                              | ICP/2000                         |             |
| O-1006 HEQB (T)                                | 10/14                        | DAN O'NEAL                           | 1                                           | ICP/0700                              | ICP/2000                         |             |
| O-1038 HEQB (T)                                | 10/17                        | STUART SMITH-BLOCKLEY                | 1                                           | ICP/0700                              | ICP/2000                         |             |
|                                                |                              |                                      |                                             |                                       |                                  |             |
| O-841 FMOD TIMBER TIPPER                       | 10/30                        | SKYLAR GARDNER                       | 2                                           | ICP/0700                              | ICP/2000                         |             |
| C-133 CR2I NORTH PACIFIC                       | 10/25                        | ALEX GALICIA                         | 20                                          | ICP/0700                              | ICP/2000                         |             |
| C-5033 CRW2 PACIFIC OASIS 6                    | 10/13                        | GEOFFERY ANDERSON                    | 20                                          | ICP/0700                              | ICP/2000                         |             |
|                                                |                              |                                      |                                             |                                       |                                  |             |
| E-566 ENG6 NORTH PACIFIC FORESTRY              | 10/17                        | COLLIN FICCADENTI                    | 3                                           | ICP/0700                              | ICP/2000                         |             |
| E-568 ENG6 FIRST STRIKE #19                    | 10/16                        | GERALD COATS                         | 3                                           | ICP/0700                              | ICP/2000                         |             |
| E-575 ENG6 J.C. OROZCO                         | 10/19                        | SCOTT HANEY                          | 3                                           | ICP/0700                              | ICP/2000                         |             |
| E-594 ENG3 OUTBACK FIREFIGHTING                | 10/23                        | CHUCK MCCONNELL                      | 3                                           | ICP/0700                              | ICP/2000                         |             |
|                                                |                              |                                      |                                             |                                       |                                  |             |
| E-559 EXC3 OWENS FREIGHT LINES                 | 10/14                        | LEVI HARDWICK                        | 2                                           | ICP/0700                              | ICP/2000                         |             |
| E-580 EXC3 OWENS FREIGHT LINES                 | 10/21                        | RANDY HUSTED                         | 2                                           | ICP/0700                              | ICP/2000                         |             |
| E-321 CHSL ATLAS                               | 10/16                        | JILLIAN FALGE                        | 2                                           | ICP/0700                              | ICP/2000                         |             |
| <b>8. Division/Group Communication Summary</b> |                              |                                      |                                             |                                       |                                  |             |
| Function                                       | Channel                      | RX Frequency N/W                     | RX Tone/NAC                                 | TX Frequency N/W                      | TX Tone/NAC                      | Mode        |
| COMMAND                                        | 2                            | 170.6875 N                           | 136.5                                       | 166.5750 N                            | 136.5                            | A           |
| TACTICAL                                       | 11                           | 168.2500 N                           | 136.5                                       | 168.2500 N                            | 136.5                            | A           |
| AIR TO GROUND                                  | 13                           | 168.3375 N                           |                                             | 168.3375 N                            |                                  | A           |
| AIR TO GROUND                                  | 14                           | 169.4625 N                           |                                             | 169.4625 N                            |                                  | A           |
| <b>9. Prepared By (Resource Unit Leader)</b>   |                              |                                      | <b>Approved By (Planning Section Chief)</b> |                                       | <b>Date</b>                      | <b>Time</b> |
| TERI PARVIN                                    |                              |                                      | JILL JOHNSON                                |                                       | 10/11/2022                       | 2000        |

**Division/Group Assignment List (ICS 204 WF)**  
**Controlled Unclassified Information//Basic**

|                                                                                                                                                                                                                                                                                                                            |                              |                                      |                                             |                                       |                                  |                  |
|----------------------------------------------------------------------------------------------------------------------------------------------------------------------------------------------------------------------------------------------------------------------------------------------------------------------------|------------------------------|--------------------------------------|---------------------------------------------|---------------------------------------|----------------------------------|------------------|
| <b>1. Incident Name:</b>                                                                                                                                                                                                                                                                                                   |                              |                                      |                                             | <b>3.</b>                             |                                  |                  |
| CEDAR CREEK                                                                                                                                                                                                                                                                                                                |                              |                                      |                                             | <b>Branch:</b><br><br>WEST            | <b>Division/Group</b><br><br>X   |                  |
| <b>2. Operational Period: DAY</b>                                                                                                                                                                                                                                                                                          |                              |                                      |                                             |                                       |                                  |                  |
| Date/Time From:<br>10/12/2022 0700 WED                                                                                                                                                                                                                                                                                     |                              | Date/Time To:<br>10/12/2022 2000 WED |                                             |                                       |                                  |                  |
| <b>4. Operations Personnel</b>                                                                                                                                                                                                                                                                                             |                              |                                      |                                             |                                       |                                  |                  |
| <b>FIELD OPERATIONS</b>                                                                                                                                                                                                                                                                                                    | AARON ROWE<br>MIKE DAVIS (T) |                                      |                                             | <b>BRANCH DIRECTOR</b>                | AARON ROWE<br>HECTOR MEDRANO (T) |                  |
| <b>DIVISION/GROUP SUPERVISOR</b>                                                                                                                                                                                                                                                                                           | DENNIS MAWHINNEY             |                                      |                                             | <b>AIR OPERATIONS BRANCH DIRECTOR</b> | PAUL BALFOUR                     |                  |
| <b>SAFETY OFFICER</b>                                                                                                                                                                                                                                                                                                      | TROY CORN<br>JACK CATES      |                                      |                                             |                                       |                                  |                  |
| <b>5. Resources Assigned this Period</b>                                                                                                                                                                                                                                                                                   |                              |                                      |                                             |                                       |                                  |                  |
| Strike Team / Task Force / Resource Designator                                                                                                                                                                                                                                                                             |                              | LWD                                  | Leader                                      | Number Persons                        | Drop Off PT./Time                | Pick Up PT./Time |
| O-1103 REAF                                                                                                                                                                                                                                                                                                                |                              | 10/24                                | MARK RICHARDSON                             | 1                                     | ICP/0700                         | ICP/2000         |
| S-1127 RAT 2                                                                                                                                                                                                                                                                                                               |                              | 10/20                                | ROBERT ABERLE                               | 2                                     | ICP/0700                         | ICP/2000         |
| <b>6. Control Operations/Work Assignments:</b>                                                                                                                                                                                                                                                                             |                              |                                      |                                             |                                       |                                  |                  |
| <p><b>Task:</b> Hold and secure control line.<br/> <b>Purpose:</b> To protect values at risk in community of Oakridge.<br/> <b>End State:</b> Keep fire North of 58 road and east of the 5871 road.</p>                                                                                                                    |                              |                                      |                                             |                                       |                                  |                  |
| <b>7. Special Instructions:</b>                                                                                                                                                                                                                                                                                            |                              |                                      |                                             |                                       |                                  |                  |
| <ul style="list-style-type: none"> <li>• Be IA ready - See IA Communication Plan for Initial Attack.</li> <li>• Areas to be avoided are marked with either black/yellow or red dot on white flagging.</li> <li>• Consult Resource Advisors if you have any questions.</li> <li>• Backhaul all excess equipment.</li> </ul> |                              |                                      |                                             |                                       |                                  |                  |
| <b>8. Division/Group Communication Summary</b>                                                                                                                                                                                                                                                                             |                              |                                      |                                             |                                       |                                  |                  |
| Function                                                                                                                                                                                                                                                                                                                   | Channel                      | RX Frequency N/W                     | RX Tone/NAC                                 | TX Frequency N/W                      | TX Tone/NAC                      | Mode             |
| COMMAND                                                                                                                                                                                                                                                                                                                    | 2                            | 170.6875 N                           | 136.5                                       | 166.5750 N                            | 136.5                            | A                |
| TACTICAL                                                                                                                                                                                                                                                                                                                   | 11                           | 168.2500 N                           | 136.5                                       | 168.2500 N                            | 136.5                            | A                |
| AIR TO GROUND                                                                                                                                                                                                                                                                                                              | 13                           | 168.3375 N                           |                                             | 168.3375 N                            |                                  | A                |
| AIR TO GROUND                                                                                                                                                                                                                                                                                                              | 14                           | 169.4625 N                           |                                             | 169.4625 N                            |                                  | A                |
| <b>9. Prepared By (Resource Unit Leader)</b>                                                                                                                                                                                                                                                                               |                              |                                      | <b>Approved By (Planning Section Chief)</b> |                                       | <b>Date</b>                      | <b>Time</b>      |
| TERI PARVIN                                                                                                                                                                                                                                                                                                                |                              |                                      | JILL JOHNSON                                |                                       | 10/11/2022                       | 2000             |



## Division/Group Assignment List (ICS 204 WF)

Controlled Unclassified Information//Basic

|                                                             |         |                                                           |                                             |                                       |                   |                                  |             |
|-------------------------------------------------------------|---------|-----------------------------------------------------------|---------------------------------------------|---------------------------------------|-------------------|----------------------------------|-------------|
| <b>1. Incident Name:</b>                                    |         |                                                           |                                             | <b>3.</b>                             |                   |                                  |             |
| CEDAR CREEK                                                 |         |                                                           |                                             | <b>Branch:</b><br><br>WEST            |                   | <b>Division/Group</b><br><br>Y   |             |
| <b>2. Operational Period:</b> <b>DAY</b>                    |         |                                                           |                                             |                                       |                   |                                  |             |
| Date/Time From:<br>10/12/2022 0700                      WED |         | Date/Time To:<br>10/12/2022 2000                      WED |                                             |                                       |                   |                                  |             |
| <b>4. Operations Personnel</b>                              |         |                                                           |                                             |                                       |                   |                                  |             |
| <b>FIELD OPERATIONS</b>                                     |         | AARON ROWE<br>MIKE DAVIS (T)                              |                                             | <b>BRANCH DIRECTOR</b>                |                   | AARON ROWE<br>HECTOR MEDRANO (T) |             |
| <b>DIVISION/GROUP SUPERVISOR</b>                            |         | ANDREW SCHAFFFRAN                                         |                                             | <b>AIR OPERATIONS BRANCH DIRECTOR</b> |                   | PAUL BALFOUR                     |             |
| <b>SAFETY OFFICER</b>                                       |         | TROY CORN<br>JACK CATES                                   |                                             |                                       |                   |                                  |             |
| <b>5. Resources Assigned this Period</b>                    |         |                                                           |                                             |                                       |                   |                                  |             |
| Strike Team / Task Force /<br>Resource Designator           |         | LWD                                                       | Leader                                      | Number<br>Persons                     | Drop Off PT./Time | Pick Up PT./Time                 |             |
| O-1054 SOF2                                                 |         | 10/21                                                     | PAUL BRNA                                   | 1                                     | ICP/0700          | ICP/2000                         |             |
| O-1028 TFLD                                                 |         | 10/17                                                     | DAVID MAYNARD                               | 1                                     | ICP/0700          | ICP/2000                         |             |
| O-1022 HEQB                                                 |         | 10/19                                                     | KYLE CRANMER                                | 1                                     | ICP/0700          | ICP/2000                         |             |
| O-1029 HEQB (T)                                             |         | 10/17                                                     | ETHAN CAMARENA                              | 1                                     | ICP/0700          | ICP/2000                         |             |
| O-868 FMOD PACIFIC RIDGELINE                                |         | 10/15                                                     | SAM HOLSTAD                                 | 2                                     | ICP/0700          | ICP/2000                         |             |
| O-1045 FMOD GOODSON LOGGING                                 |         | 10/18                                                     | NATHANIEL ZELLER                            | 2                                     | ICP/0700          | ICP/2000                         |             |
| E-596 ENG3 TORRES CONTRACTING                               |         | 10/20                                                     | CHAD CORWIN                                 | 3                                     | ICP/0700          | ICP/2000                         |             |
| E-571 EXC3 MARK JONES TRUCKING                              |         | 10/18                                                     | CHAD BROWN                                  | 2                                     | ICP/0700          | ICP/2000                         |             |
| E-5077 SKD2 HOFBAUER                                        |         | 10/25                                                     | DARON BLAIR                                 | 2                                     | ICP/0700          | ICP/2000                         |             |
| E-395 FEL2 MILLER TIMBER                                    |         | 10/19                                                     | TREVEN OAKES                                | 1                                     | ICP/0700          | ICP/2000                         |             |
| E-5358 FEL2 IDAHO WEST LLC                                  |         | 10/27                                                     | RUSS GRANT                                  | 2                                     | ICP/0700          | ICP/2000                         |             |
| O-1013 REAF                                                 |         | 10/14                                                     | CHRIS MARTIN                                | 1                                     | ICP/0700          | ICP/2000                         |             |
| O-1025 REAF                                                 |         | 10/17                                                     | ADAM BUCHER                                 | 1                                     | ICP/0700          | ICP/2000                         |             |
| S-5428 REMS 12                                              |         | 10/13                                                     | MARCOS GARCIA                               | 4                                     | ICP/0700          | ICP/2000                         |             |
| E-5405 AMBULANCE 7                                          |         | 10/18                                                     | ALVIN HORN                                  | 2                                     | ICP/0700          | ICP/2000                         |             |
| <b>8. Division/Group Communication Summary</b>              |         |                                                           |                                             |                                       |                   |                                  |             |
| Function                                                    | Channel | RX Frequency N/W                                          | RX Tone/NAC                                 | TX Frequency N/W                      | TX Tone/NAC       | Mode                             |             |
| COMMAND                                                     | 1       | 170.0000 N                                                | 136.5                                       | 166.6750 N                            | 136.5             | A                                |             |
| TACTICAL                                                    | 12      | 171.1125 N                                                | 136.5                                       | 171.1125 N                            | 136.5             | A                                |             |
| AIR TO GROUND                                               | 13      | 168.3375 N                                                |                                             | 168.3375 N                            |                   | A                                |             |
| AIR TO GROUND                                               | 14      | 169.4625 N                                                |                                             | 169.4625 N                            |                   | A                                |             |
| <b>9. Prepared By (Resource Unit Leader)</b>                |         |                                                           | <b>Approved By (Planning Section Chief)</b> |                                       |                   | <b>Date</b>                      | <b>Time</b> |
| TERI PARVIN                                                 |         |                                                           | JILL JOHNSON                                |                                       |                   | 10/11/2022                       | 2000        |

**Division/Group Assignment List (ICS 204 WF)**  
**Controlled Unclassified Information//Basic**

|                                                                                                                                                                                                                                                                                                                            |         |                                      |             |                                             |                   |                                  |                  |
|----------------------------------------------------------------------------------------------------------------------------------------------------------------------------------------------------------------------------------------------------------------------------------------------------------------------------|---------|--------------------------------------|-------------|---------------------------------------------|-------------------|----------------------------------|------------------|
| <b>1. Incident Name:</b>                                                                                                                                                                                                                                                                                                   |         |                                      |             | <b>3.</b>                                   |                   |                                  |                  |
| CEDAR CREEK                                                                                                                                                                                                                                                                                                                |         |                                      |             | <b>Branch:</b>                              |                   | <b>Division/Group</b>            |                  |
| <b>2. Operational Period: DAY</b>                                                                                                                                                                                                                                                                                          |         |                                      |             | WEST                                        |                   | Y                                |                  |
| Date/Time From:<br>10/12/2022 0700 WED                                                                                                                                                                                                                                                                                     |         | Date/Time To:<br>10/12/2022 2000 WED |             |                                             |                   |                                  |                  |
| <b>4. Operations Personnel</b>                                                                                                                                                                                                                                                                                             |         |                                      |             |                                             |                   |                                  |                  |
| <b>FIELD OPERATIONS</b>                                                                                                                                                                                                                                                                                                    |         | AARON ROWE<br>MIKE DAVIS (T)         |             | <b>BRANCH DIRECTOR</b>                      |                   | AARON ROWE<br>HECTOR MEDRANO (T) |                  |
| <b>DIVISION/GROUP SUPERVISOR</b>                                                                                                                                                                                                                                                                                           |         | ANDREW SCHAFFFRAN                    |             | <b>AIR OPERATIONS BRANCH DIRECTOR</b>       |                   | PAUL BALFOUR                     |                  |
| <b>SAFETY OFFICER</b>                                                                                                                                                                                                                                                                                                      |         | TROY CORN<br>JACK CATES              |             |                                             |                   |                                  |                  |
| <b>5. Resources Assigned this Period</b>                                                                                                                                                                                                                                                                                   |         |                                      |             |                                             |                   |                                  |                  |
| Strike Team / Task Force /<br>Resource Designator                                                                                                                                                                                                                                                                          |         |                                      | LWD         | Leader                                      | Number<br>Persons | Drop Off PT./Time                | Pick Up PT./Time |
|                                                                                                                                                                                                                                                                                                                            |         |                                      |             |                                             |                   |                                  |                  |
| <b>6. Control Operations/Work Assignments:</b>                                                                                                                                                                                                                                                                             |         |                                      |             |                                             |                   |                                  |                  |
| <p><b>Task:</b> Secure perimeter along FS road 2409.</p> <p><b>Purpose:</b> To protect values at risk in the community of Oakridge and High Prairie.</p> <p><b>End State:</b> Fire remains inside current containment lines.</p>                                                                                           |         |                                      |             |                                             |                   |                                  |                  |
| <b>7. Special Instructions:</b>                                                                                                                                                                                                                                                                                            |         |                                      |             |                                             |                   |                                  |                  |
| <ul style="list-style-type: none"> <li>• Be IA ready - See IA Communication Plan for Initial Attack.</li> <li>• Areas to be avoided are marked with either black/yellow or red dot on white flagging.</li> <li>• Consult Resource Advisors if you have any questions.</li> <li>• Backhaul all excess equipment.</li> </ul> |         |                                      |             |                                             |                   |                                  |                  |
| <b>8. Division/Group Communication Summary</b>                                                                                                                                                                                                                                                                             |         |                                      |             |                                             |                   |                                  |                  |
| Function                                                                                                                                                                                                                                                                                                                   | Channel | RX Frequency N/W                     | RX Tone/NAC | TX Frequency N/W                            | TX Tone/NAC       | Mode                             |                  |
| COMMAND                                                                                                                                                                                                                                                                                                                    | 1       | 170.0000 N                           | 136.5       | 166.6750 N                                  | 136.5             | A                                |                  |
| TACTICAL                                                                                                                                                                                                                                                                                                                   | 12      | 171.1125 N                           | 136.5       | 171.1125 N                                  | 136.5             | A                                |                  |
| AIR TO GROUND                                                                                                                                                                                                                                                                                                              | 13      | 168.3375 N                           |             | 168.3375 N                                  |                   | A                                |                  |
| AIR TO GROUND                                                                                                                                                                                                                                                                                                              | 14      | 169.4625 N                           |             | 169.4625 N                                  |                   | A                                |                  |
| <b>9. Prepared By (Resource Unit Leader)</b>                                                                                                                                                                                                                                                                               |         |                                      |             | <b>Approved By (Planning Section Chief)</b> |                   | <b>Date</b>                      | <b>Time</b>      |
| TERI PARVIN                                                                                                                                                                                                                                                                                                                |         |                                      |             | JILL JOHNSON                                |                   | 10/11/2022                       | 2000             |

**Division/Group Assignment List (ICS 204 WF)**  
**Controlled Unclassified Information//Basic**

|                                                |         |                                             |                |                                  |                                |                         |
|------------------------------------------------|---------|---------------------------------------------|----------------|----------------------------------|--------------------------------|-------------------------|
| <b>1. Incident Name:</b>                       |         |                                             |                | <b>3.</b>                        |                                |                         |
| CEDAR CREEK                                    |         |                                             |                | <b>Branch:</b>                   | <b>Division/Group</b><br><br>P |                         |
| <b>2. Operational Period: DAY</b>              |         |                                             |                |                                  |                                |                         |
| Date/Time From:<br>10/12/2022 0700 WED         |         | Date/Time To:<br>10/12/2022 2000 WED        |                |                                  |                                |                         |
| <b>4. Operations Personnel</b>                 |         |                                             |                |                                  |                                |                         |
| <b>FIELD OPERATIONS</b>                        |         | AARON ROWE<br>MIKE DAVIS (T)                |                | <b>DIVISION/GROUP SUPERVISOR</b> |                                | JOE HARRIS              |
| <b>AIR OPERATIONS BRANCH DIRECTOR</b>          |         | PAUL BALFOUR                                |                | <b>SAFETY OFFICER</b>            |                                | TROY CORN<br>JACK CATES |
| <b>5. Resources Assigned this Period</b>       |         |                                             |                |                                  |                                |                         |
| Strike Team / Task Force / Resource Designator | LWD     | Leader                                      | Number Persons | Drop Off PT./Time                | Pick Up PT./Time               |                         |
| O-1114 SOFR                                    | 10/23   | ALEC MCAFFEE                                | 1              | JUNCTION CAMP/0700               | JUNCTION CAMP/2000             |                         |
| O-5338 TFLD                                    | 10/13   | ERIC BADER                                  | 1              | JUNCTION CAMP/0700               | JUNCTION CAMP/2000             |                         |
| O-5408 TFLD                                    | 10/13   | PAUL MANCUSO                                | 1              | JUNCTION CAMP/0700               | JUNCTION CAMP/2000             |                         |
| C-5037 CRW2 MR CONTRACTING CREW 1              | 10/18   | TOMAS GUZMAN                                | 20             | JUNCTION CAMP/0700               | JUNCTION CAMP/2000             |                         |
| E-574 ENG6 OR-MAF 44                           | 10/19   | MITCHELL FORTE                              | 4              | JUNCTION CAMP/0700               | JUNCTION CAMP/2000             |                         |
| E-595 ENG3 ENG3 FIREMOG                        | 10/21   | KEVIN STULTZ                                | 6              | JUNCTION CAMP/0700               | JUNCTION CAMP/2000             |                         |
| E-5522 ENG6 RUE FOREST CONTRACTING             | 10/12   | ANTHONY CUNIAL                              | 3              | JUNCTION CAMP/0700               | JUNCTION CAMP/2000             |                         |
| E-5007 WTS2 PATRICK HUGHES TRUCKING            | 10/19   | GARY HUGHES                                 | 1              | JUNCTION CAMP/0700               | JUNCTION CAMP/2000             |                         |
| E-383 CHSL ATLAS TREE                          | 10/25   | CHAD LATHEM                                 | 2              | R&R 10/11-12/                    |                                |                         |
| E-487 CHSL ATLAS TREE SURGERY                  | 10/25   | JASON MARTIN                                | 2              | JUNCTION CAMP/0700               | JUNCTION CAMP/2000             |                         |
| O-5403 REAF                                    | 10/14   | JEFF JACKSON                                | 1              | JUNCTION CAMP/0700               | JUNCTION CAMP/2000             |                         |
| O-1153 REAF                                    | 10/24   | CASEY SCHUDER                               | 1              | JUNCTION CAMP/0700               | JUNCTION CAMP/2000             |                         |
| S-449 MEDIC 7                                  | 10/16   | FISHER / HAVER                              | 2              | JUNCTION CAMP/0700               | JUNCTION CAMP/2000             |                         |
| S-5052 MEDIC 3                                 | 10/14   | BRODZIK / JASPER                            | 2              | JUNCTION CAMP/0700               | JUNCTION CAMP/2000             |                         |
| E-5465 AMBULANCE 9                             | 10/18   | SANDS / BENETT                              | 2              | JUNCTION CAMP/0700               | JUNCTION CAMP/2000             |                         |
| <b>8. Division/Group Communication Summary</b> |         |                                             |                |                                  |                                |                         |
| Function                                       | Channel | RX Frequency N/W                            | RX Tone/NAC    | TX Frequency N/W                 | TX Tone/NAC                    | Mode                    |
| COMMAND                                        | 4       | 171.9000 N                                  | 136.5          | 165.9875 N                       | 136.5                          | A                       |
| COMMAND                                        | 5       | 170.0125 N                                  | 136.5          | 165.2500 N                       | 136.5                          | A                       |
| TACTICAL                                       | 12      | 171.1125 N                                  | 136.5          | 171.1125 N                       | 136.5                          | A                       |
| AIR TO GROUND                                  | 13      | 168.3375 N                                  |                | 168.3375 N                       |                                | A                       |
| AIR TO GROUND                                  | 14      | 169.4625 N                                  |                | 169.4625 N                       |                                | A                       |
| <b>9. Prepared By (Resource Unit Leader)</b>   |         | <b>Approved By (Planning Section Chief)</b> |                | <b>Date</b>                      | <b>Time</b>                    |                         |
| TERI PARVIN                                    |         | JILL JOHNSON                                |                | 10/11/2022                       | 2000                           |                         |

**Division/Group Assignment List (ICS 204 WF)**  
**Controlled Unclassified Information//Basic**

|                                                                                                                                                                                                                                                                                                                                                                                    |         |                                      |                                             |                                  |                       |                         |
|------------------------------------------------------------------------------------------------------------------------------------------------------------------------------------------------------------------------------------------------------------------------------------------------------------------------------------------------------------------------------------|---------|--------------------------------------|---------------------------------------------|----------------------------------|-----------------------|-------------------------|
| <b>1. Incident Name:</b>                                                                                                                                                                                                                                                                                                                                                           |         |                                      | <b>3.</b>                                   |                                  |                       |                         |
| CEDAR CREEK                                                                                                                                                                                                                                                                                                                                                                        |         |                                      | <b>Branch:</b>                              |                                  | <b>Division/Group</b> |                         |
| <b>2. Operational Period: DAY</b>                                                                                                                                                                                                                                                                                                                                                  |         |                                      | P                                           |                                  |                       |                         |
| Date/Time From:<br>10/12/2022 0700 WED                                                                                                                                                                                                                                                                                                                                             |         | Date/Time To:<br>10/12/2022 2000 WED |                                             |                                  |                       |                         |
| <b>4. Operations Personnel</b>                                                                                                                                                                                                                                                                                                                                                     |         |                                      |                                             |                                  |                       |                         |
| <b>FIELD OPERATIONS</b>                                                                                                                                                                                                                                                                                                                                                            |         | AARON ROWE<br>MIKE DAVIS (T)         |                                             | <b>DIVISION/GROUP SUPERVISOR</b> |                       | JOE HARRIS              |
| <b>AIR OPERATIONS BRANCH DIRECTOR</b>                                                                                                                                                                                                                                                                                                                                              |         | PAUL BALFOUR                         |                                             | <b>SAFETY OFFICER</b>            |                       | TROY CORN<br>JACK CATES |
| <b>5. Resources Assigned this Period</b>                                                                                                                                                                                                                                                                                                                                           |         |                                      |                                             |                                  |                       |                         |
| Strike Team / Task Force /<br>Resource Designator                                                                                                                                                                                                                                                                                                                                  |         | LWD                                  | Leader                                      | Number<br>Persons                | Drop Off PT./Time     | Pick Up PT./Time        |
|                                                                                                                                                                                                                                                                                                                                                                                    |         |                                      |                                             |                                  |                       |                         |
| <b>6. Control Operations/Work Assignments:</b>                                                                                                                                                                                                                                                                                                                                     |         |                                      |                                             |                                  |                       |                         |
| <p><b>Task:</b> Conduct suppression repair and keep the fire north of the 4290 road.</p> <p><b>Purpose:</b> Protect values at risk on the east side of Waldo Lake while minimizing additional resource damage.</p> <p><b>End State:</b> Control lines are repaired to suppression repair standards while minimizing the threat of the fire to values at risk.</p>                  |         |                                      |                                             |                                  |                       |                         |
| <b>7. Special Instructions:</b>                                                                                                                                                                                                                                                                                                                                                    |         |                                      |                                             |                                  |                       |                         |
| <p>Waldo Lake should not be used as a water source.</p> <ul style="list-style-type: none"> <li>• Be IA ready - See IA Communication Plan for Initial Attack.</li> <li>• Areas to be avoided are marked with either black/yellow or red dot on white flagging.</li> <li>• Consult Resource Advisors if you have any questions.</li> <li>• Backhaul all excess equipment.</li> </ul> |         |                                      |                                             |                                  |                       |                         |
| <b>8. Division/Group Communication Summary</b>                                                                                                                                                                                                                                                                                                                                     |         |                                      |                                             |                                  |                       |                         |
| Function                                                                                                                                                                                                                                                                                                                                                                           | Channel | RX Frequency N/W                     | RX Tone/NAC                                 | TX Frequency N/W                 | TX Tone/NAC           | Mode                    |
| COMMAND                                                                                                                                                                                                                                                                                                                                                                            | 4       | 171.9000 N                           | 136.5                                       | 165.9875 N                       | 136.5                 | A                       |
| COMMAND                                                                                                                                                                                                                                                                                                                                                                            | 5       | 170.0125 N                           | 136.5                                       | 165.2500 N                       | 136.5                 | A                       |
| TACTICAL                                                                                                                                                                                                                                                                                                                                                                           | 12      | 171.1125 N                           | 136.5                                       | 171.1125 N                       | 136.5                 | A                       |
| AIR TO GROUND                                                                                                                                                                                                                                                                                                                                                                      | 13      | 168.3375 N                           |                                             | 168.3375 N                       |                       | A                       |
| AIR TO GROUND                                                                                                                                                                                                                                                                                                                                                                      | 14      | 169.4625 N                           |                                             | 169.4625 N                       |                       | A                       |
| <b>9. Prepared By (Resource Unit Leader)</b>                                                                                                                                                                                                                                                                                                                                       |         |                                      | <b>Approved By (Planning Section Chief)</b> |                                  | <b>Date</b>           | <b>Time</b>             |
| TERI PARVIN                                                                                                                                                                                                                                                                                                                                                                        |         |                                      | JILL JOHNSON                                |                                  | 10/11/2022            | 2000                    |



**Division/Group Assignment List (ICS 204 WF)**  
**Controlled Unclassified Information//Basic**

|                                                |         |                                      |                                             |                                  |                                |                         |
|------------------------------------------------|---------|--------------------------------------|---------------------------------------------|----------------------------------|--------------------------------|-------------------------|
| <b>1. Incident Name:</b>                       |         |                                      |                                             | <b>3.</b>                        |                                |                         |
| CEDAR CREEK                                    |         |                                      |                                             | <b>Branch:</b>                   | <b>Division/Group</b><br><br>R |                         |
| <b>2. Operational Period: DAY</b>              |         |                                      |                                             |                                  |                                |                         |
| Date/Time From:<br>10/12/2022 0700 WED         |         | Date/Time To:<br>10/12/2022 2000 WED |                                             |                                  |                                |                         |
| <b>4. Operations Personnel</b>                 |         |                                      |                                             |                                  |                                |                         |
| <b>FIELD OPERATIONS</b>                        |         | AARON ROWE<br>MIKE DAVIS (T)         |                                             | <b>DIVISION/GROUP SUPERVISOR</b> |                                | JEREMY KOLAKS           |
| <b>AIR OPERATIONS BRANCH DIRECTOR</b>          |         | PAUL BALFOUR                         |                                             | <b>SAFETY OFFICER</b>            |                                | TROY CORN<br>JACK CATES |
| <b>5. Resources Assigned this Period</b>       |         |                                      |                                             |                                  |                                |                         |
| Strike Team / Task Force / Resource Designator |         | LWD                                  | Leader                                      | Number Persons                   | Drop Off PT./Time              | Pick Up PT./Time        |
| O-1037.61 SOFR                                 |         | 10/21                                | PHIL GRAHAM                                 | 1                                | JUNCTION CAMP/0700             | JUNCTION CAMP/2000      |
| O-5409 TFLD                                    |         | 10/13                                | JUSTEN JOHANSEN                             | 1                                | JUNCTION CAMP/0700             | JUNCTION CAMP/2000      |
| O-5410 HEQB                                    |         | 10/14                                | SETH GREENE                                 | 1                                | JUNCTION CAMP/0700             | JUNCTION CAMP/2000      |
| C-5034 CRW2 PACIFIC OASIS 10                   |         | 10/16                                | DONTE MARQUEZ                               | 20                               | JUNCTION CAMP/0700             | JUNCTION CAMP/2000      |
| E-587 ENG6 C & R REFORESTATION                 |         | 10/21                                | JAY FLORA                                   | 3                                | JUNCTION CAMP/0700             | JUNCTION CAMP/2000      |
| E-5163 WTT2 PIERCE FIRE                        |         | 10/15                                | ZACK SCHWEMER                               | 2                                | JUNCTION CAMP/0700             | JUNCTION CAMP/2000      |
| E-5230 WTS2 K & R CONTRACTING, LLC             |         | 10/24                                | RAMA WOOD                                   | 1                                | JUNCTION CAMP/0700             | JUNCTION CAMP/2000      |
| E-5231 WTS2 TABLE MOUNTAIN                     |         | 10/26                                | TOM WHITING                                 | 1                                | JUNCTION CAMP/0700             | JUNCTION CAMP/2000      |
| E-5519 WTS2 CLAY'S FAB & REPAIR                |         | 10/12                                | CLAY ALVERNAZ                               | 1                                | JUNCTION CAMP/0700             | JUNCTION CAMP/2000      |
| E-5520 WTS2 MILLER TIMBER                      |         | 10/16                                | WAYNE ENGESETH                              | 1                                | JUNCTION CAMP/0700             | JUNCTION CAMP/2000      |
| E-5376 GRD2 TABLE MOUNTAIN FORESTRY            |         | 10/26                                | FRANCIS READY                               | 2                                | JUNCTION CAMP/0700             | JUNCTION CAMP/2000      |
| E-341 EXC2 HATFIELD TRUCKING                   |         | 10/20                                | TODD WISBEY                                 | 2                                | JUNCTION CAMP/0700             | JUNCTION CAMP/2000      |
| E-5458 EXC2 SANTUCCI RANCH TURF LLC            |         | 10/25                                | CABE GOEHRING                               | 2                                | JUNCTION CAMP/0700             | JUNCTION CAMP/2000      |
| E-5501 EXC2 OWENS FREIGHT                      |         | 10/21                                | TALON COLLINS                               | 2                                | JUNCTION CAMP/0700             | JUNCTION CAMP/2000      |
| E-5502 EXC2 OWENS FREIGHT LINES                |         | 10/23                                | JOHN WAMPLER                                | 2                                | JUNCTION CAMP/0700             | JUNCTION CAMP/2000      |
| <b>8. Division/Group Communication Summary</b> |         |                                      |                                             |                                  |                                |                         |
| Function                                       | Channel | RX Frequency N/W                     | RX Tone/NAC                                 | TX Frequency N/W                 | TX Tone/NAC                    | Mode                    |
| COMMAND                                        | 3       | 171.0625 N                           | 136.5                                       | 162.8125 N                       | 136.5                          | A                       |
| COMMAND                                        | 5       | 170.0125 N                           | 136.5                                       | 165.2500 N                       | 136.5                          | A                       |
| TACTICAL                                       | 8       | 168.6000 N                           | 136.5                                       | 168.6000 N                       | 136.5                          | A                       |
| AIR TO GROUND                                  | 13      | 168.3375 N                           |                                             | 168.3375 N                       |                                | A                       |
| AIR TO GROUND                                  | 14      | 169.4625 N                           |                                             | 169.4625 N                       |                                | A                       |
| <b>9. Prepared By (Resource Unit Leader)</b>   |         |                                      | <b>Approved By (Planning Section Chief)</b> |                                  | <b>Date</b>                    | <b>Time</b>             |
| TERI PARVIN                                    |         |                                      | JILL JOHNSON                                |                                  | 10/11/2022                     | 2000                    |

**Division/Group Assignment List (ICS 204 WF)**  
**Controlled Unclassified Information//Basic**

|                                                                                                                                                                                                                                                                                                                                                                                                                                                           |         |                                      |                                             |                                  |                    |                         |             |
|-----------------------------------------------------------------------------------------------------------------------------------------------------------------------------------------------------------------------------------------------------------------------------------------------------------------------------------------------------------------------------------------------------------------------------------------------------------|---------|--------------------------------------|---------------------------------------------|----------------------------------|--------------------|-------------------------|-------------|
| <b>1. Incident Name:</b>                                                                                                                                                                                                                                                                                                                                                                                                                                  |         |                                      |                                             | <b>3.</b>                        |                    |                         |             |
| CEDAR CREEK                                                                                                                                                                                                                                                                                                                                                                                                                                               |         |                                      |                                             | <b>Branch:</b>                   |                    | <b>Division/Group</b>   |             |
| <b>2. Operational Period: DAY</b>                                                                                                                                                                                                                                                                                                                                                                                                                         |         |                                      |                                             | R                                |                    |                         |             |
| Date/Time From:<br>10/12/2022 0700 WED                                                                                                                                                                                                                                                                                                                                                                                                                    |         | Date/Time To:<br>10/12/2022 2000 WED |                                             |                                  |                    |                         |             |
| <b>4. Operations Personnel</b>                                                                                                                                                                                                                                                                                                                                                                                                                            |         |                                      |                                             |                                  |                    |                         |             |
| <b>FIELD OPERATIONS</b>                                                                                                                                                                                                                                                                                                                                                                                                                                   |         | AARON ROWE<br>MIKE DAVIS (T)         |                                             | <b>DIVISION/GROUP SUPERVISOR</b> |                    | JEREMY KOLAKS           |             |
| <b>AIR OPERATIONS BRANCH DIRECTOR</b>                                                                                                                                                                                                                                                                                                                                                                                                                     |         | PAUL BALFOUR                         |                                             | <b>SAFETY OFFICER</b>            |                    | TROY CORN<br>JACK CATES |             |
| <b>5. Resources Assigned this Period</b>                                                                                                                                                                                                                                                                                                                                                                                                                  |         |                                      |                                             |                                  |                    |                         |             |
| Strike Team / Task Force / Resource Designator                                                                                                                                                                                                                                                                                                                                                                                                            |         | LWD                                  | Leader                                      | Number Persons                   | Drop Off PT./Time  | Pick Up PT./Time        |             |
| E-552 VROL SCOTT MARSHALL                                                                                                                                                                                                                                                                                                                                                                                                                                 |         | 10/24                                | FRANK HAYES                                 | 2                                | JUNCTION CAMP/0700 | JUNCTION CAMP/2000      |             |
| E-5275 DUMP BAR SEVEN                                                                                                                                                                                                                                                                                                                                                                                                                                     |         | 10/13                                | STEPHEN FIELDS                              | 1                                | JUNCTION CAMP/0700 | JUNCTION CAMP/2000      |             |
| O-1059 REAF                                                                                                                                                                                                                                                                                                                                                                                                                                               |         | 10/18                                | JASON BERNARDS                              | 1                                | JUNCTION CAMP/0700 | JUNCTION CAMP/2000      |             |
| S-5049 MEDIC 1                                                                                                                                                                                                                                                                                                                                                                                                                                            |         | 10/12                                | CROWE / VANIS                               | 2                                | JUNCTION CAMP/0700 | JUNCTION CAMP/2000      |             |
| S-5051 MEDIC 2                                                                                                                                                                                                                                                                                                                                                                                                                                            |         | 10/20                                | LAPEARL / LAWLER                            | 2                                | JUNCTION CAMP/0700 | JUNCTION CAMP/2000      |             |
| E-5115 AMBULANCE 6                                                                                                                                                                                                                                                                                                                                                                                                                                        |         | 10/17                                | NEWMAN / MCDONNELL                          | 2                                | JUNCTION CAMP/0700 | JUNCTION CAMP/2000      |             |
| <b>6. Control Operations/Work Assignments:</b>                                                                                                                                                                                                                                                                                                                                                                                                            |         |                                      |                                             |                                  |                    |                         |             |
| <p>Task: Continue shaded fuel break on roads 4668, 4660, and Hwy 46 to specifications by the local unit to ensure fire stays west of these road systems. Repair as appropriate for projected stage of fire suppression.</p> <p>Purpose: Protect values at risk at Twin Lakes Lodge, Wickiup Reservoir, Davis Lake, and the community of Crescent.</p> <p>End State: Fire remains inside current containment lines, and resource values are protected.</p> |         |                                      |                                             |                                  |                    |                         |             |
| <b>7. Special Instructions:</b>                                                                                                                                                                                                                                                                                                                                                                                                                           |         |                                      |                                             |                                  |                    |                         |             |
| <p>Waldo Lake should not be used as a water source.</p> <ul style="list-style-type: none"> <li>• Be IA ready - See IA Communication Plan for Initial Attack.</li> <li>• Areas to be avoided are marked with either black/yellow or red dot on white flagging.</li> <li>• Consult Resource Advisors if you have any questions.</li> <li>• Backhaul all excess equipment.</li> </ul>                                                                        |         |                                      |                                             |                                  |                    |                         |             |
| <b>8. Division/Group Communication Summary</b>                                                                                                                                                                                                                                                                                                                                                                                                            |         |                                      |                                             |                                  |                    |                         |             |
| Function                                                                                                                                                                                                                                                                                                                                                                                                                                                  | Channel | RX Frequency N/W                     | RX Tone/NAC                                 | TX Frequency N/W                 | TX Tone/NAC        | Mode                    |             |
| COMMAND                                                                                                                                                                                                                                                                                                                                                                                                                                                   | 3       | 171.0625 N                           | 136.5                                       | 162.8125 N                       | 136.5              | A                       |             |
| COMMAND                                                                                                                                                                                                                                                                                                                                                                                                                                                   | 5       | 170.0125 N                           | 136.5                                       | 165.2500 N                       | 136.5              | A                       |             |
| TACTICAL                                                                                                                                                                                                                                                                                                                                                                                                                                                  | 8       | 168.6000 N                           | 136.5                                       | 168.6000 N                       | 136.5              | A                       |             |
| AIR TO GROUND                                                                                                                                                                                                                                                                                                                                                                                                                                             | 13      | 168.3375 N                           |                                             | 168.3375 N                       |                    | A                       |             |
| AIR TO GROUND                                                                                                                                                                                                                                                                                                                                                                                                                                             | 14      | 169.4625 N                           |                                             | 169.4625 N                       |                    | A                       |             |
| <b>9. Prepared By (Resource Unit Leader)</b>                                                                                                                                                                                                                                                                                                                                                                                                              |         |                                      | <b>Approved By (Planning Section Chief)</b> |                                  |                    | <b>Date</b>             | <b>Time</b> |
| TERI PARVIN                                                                                                                                                                                                                                                                                                                                                                                                                                               |         |                                      | JILL JOHNSON                                |                                  |                    | 10/11/2022              | 2000        |

**Division/Group Assignment List (ICS 204 WF)**  
**Controlled Unclassified Information//Basic**

|                                                                                                                                                                                                                                                                     |         |                                      |                                             |                                  |                       |                         |
|---------------------------------------------------------------------------------------------------------------------------------------------------------------------------------------------------------------------------------------------------------------------|---------|--------------------------------------|---------------------------------------------|----------------------------------|-----------------------|-------------------------|
| <b>1. Incident Name:</b>                                                                                                                                                                                                                                            |         |                                      | <b>3.</b>                                   |                                  |                       |                         |
| CEDAR CREEK                                                                                                                                                                                                                                                         |         |                                      | <b>Branch:</b>                              |                                  | <b>Division/Group</b> |                         |
| <b>2. Operational Period: DAY</b>                                                                                                                                                                                                                                   |         |                                      | POTTER-SWAMP                                |                                  |                       |                         |
| Date/Time From:<br>10/12/2022 0700 WED                                                                                                                                                                                                                              |         | Date/Time To:<br>10/12/2022 2000 WED |                                             |                                  |                       |                         |
| <b>4. Operations Personnel</b>                                                                                                                                                                                                                                      |         |                                      |                                             |                                  |                       |                         |
| <b>FIELD OPERATIONS</b>                                                                                                                                                                                                                                             |         | AARON ROWE<br>MIKE DAVIS (T)         |                                             | <b>DIVISION/GROUP SUPERVISOR</b> |                       | QUINLAN ANDERSON        |
| <b>AIR OPERATIONS BRANCH DIRECTOR</b>                                                                                                                                                                                                                               |         | PAUL BALFOUR                         |                                             | <b>SAFETY OFFICER</b>            |                       | TROY CORN<br>JACK CATES |
| <b>5. Resources Assigned this Period</b>                                                                                                                                                                                                                            |         |                                      |                                             |                                  |                       |                         |
| Strike Team / Task Force / Resource Designator                                                                                                                                                                                                                      |         | LWD                                  | Leader                                      | Number Persons                   | Drop Off PT./Time     | Pick Up PT./Time        |
| HEQB (L/L)                                                                                                                                                                                                                                                          |         |                                      | JAIME MARISCAL                              | 1                                | ICP/0700              | ICP/2000                |
| HEQB (T) (L/L)                                                                                                                                                                                                                                                      |         |                                      | ADAM VROON                                  | 1                                | ICP/0700              | ICP/2000                |
| C2IA WIL HAND CREW #501 (L/L)                                                                                                                                                                                                                                       |         |                                      | JESUS SARAZ                                 | 16                               | ICP/0700              | ICP/2000                |
| E-561 EXC2 JERRY SWEARINGEN CONSTR                                                                                                                                                                                                                                  |         | 10/17                                | JERRY SWEARINGEN                            | 2                                | ICP/0700              | ICP/2000                |
| E-582 EXC2 ROBERT MURRAY                                                                                                                                                                                                                                            |         | 10/21                                | CHARLOTTE KAME                              | 1                                | ICP/0700              | ICP/2000                |
| E-581 EXC3 HUGHES, PATRICK                                                                                                                                                                                                                                          |         | 10/21                                | PATRICK HUGHES                              | 2                                | ICP/0700              | ICP/2000                |
| E-563 DUMP LEE ROY BELLOIR & SONS                                                                                                                                                                                                                                   |         | 10/17                                | LEE ROY BELLOIR                             | 1                                | ICP/0700              | ICP/2000                |
| E-564 DUMP RUSSELS MGNT SERVICES                                                                                                                                                                                                                                    |         | 10/19                                | WILLY AUSTIN                                | 1                                | ICP/0700              | ICP/2000                |
| E-176 AMBU2                                                                                                                                                                                                                                                         |         | 10/24                                | JARED GRISSOM                               | 2                                | ICP/0700              | ICP/2000                |
| <b>6. Control Operations/Work Assignments:</b>                                                                                                                                                                                                                      |         |                                      |                                             |                                  |                       |                         |
| Task: Continue suppression repair work.<br>Purpose: Maintain the integrity of infrastructure and protect natural resources.<br>End State: Return roads and suppression control features to pre-fire conditions per the Willamette NF suppression repair guidelines. |         |                                      |                                             |                                  |                       |                         |
| <b>7. Special Instructions:</b>                                                                                                                                                                                                                                     |         |                                      |                                             |                                  |                       |                         |
| <br><br><br><br>                                                                                                                                                                                                                                                    |         |                                      |                                             |                                  |                       |                         |
| <b>8. Division/Group Communication Summary</b>                                                                                                                                                                                                                      |         |                                      |                                             |                                  |                       |                         |
| Function                                                                                                                                                                                                                                                            | Channel | RX Frequency N/W                     | RX Tone/NAC                                 | TX Frequency N/W                 | TX Tone/NAC           | Mode                    |
| COMMAND                                                                                                                                                                                                                                                             | 6       | 170.2625 N                           | 136.5                                       | 165.8125 N                       | 136.5                 | A                       |
| COMMAND                                                                                                                                                                                                                                                             | 7       | 170.4625 N                           | 103.5                                       | 164.8250 N                       | 103.5                 | A                       |
| TACTICAL                                                                                                                                                                                                                                                            | 11      | 168.2500 N                           | 136.5                                       | 168.2500 N                       | 136.5                 | A                       |
| AIR TO GROUND                                                                                                                                                                                                                                                       | 13      | 168.3375 N                           |                                             | 168.3375 N                       |                       | A                       |
| AIR TO GROUND                                                                                                                                                                                                                                                       | 14      | 169.4625 N                           |                                             | 169.4625 N                       |                       | A                       |
| <b>9. Prepared By (Resource Unit Leader)</b>                                                                                                                                                                                                                        |         |                                      | <b>Approved By (Planning Section Chief)</b> |                                  | <b>Date</b>           | <b>Time</b>             |
| TERI PARVIN                                                                                                                                                                                                                                                         |         |                                      | JILL JOHNSON                                |                                  | 10/11/2022            | 2000                    |





Controlled Unclassified Information/Basic

|                                               |                                         |                            |                          |                         |                        |
|-----------------------------------------------|-----------------------------------------|----------------------------|--------------------------|-------------------------|------------------------|
| <b>AIR OPERATIONS SUMMARY<br/>CEDAR CREEK</b> | Prepared By: Paul Balfour AOB           | Prepared: 10/11/2022       | Prepared Time: 1800 hrs. |                         |                        |
|                                               | <b>2. OPERATIONAL PERIOD</b> 10/12/2022 | <b>START TIME:</b><br>0700 | <b>END TIME:</b><br>1800 | <b>SUNRISE:</b><br>0718 | <b>SUNSET:</b><br>1832 |

|                                                                                                                                                                                                                                                                                                                                                                                                                                                                                |                                                                                                                                                           |                                                                                                                                                             |
|--------------------------------------------------------------------------------------------------------------------------------------------------------------------------------------------------------------------------------------------------------------------------------------------------------------------------------------------------------------------------------------------------------------------------------------------------------------------------------|-----------------------------------------------------------------------------------------------------------------------------------------------------------|-------------------------------------------------------------------------------------------------------------------------------------------------------------|
| <p><b>HIGH, SHIFTING, ERRATIC WINDS WILL AFFECT AIRCRAFT PERFORMANCE AND AVAILABILITY.</b></p> <p>TRACK WATER SOURCE USE ON COST SUMMARIES FOR EACH HELICOPTER.</p> <p>*LEND/LEASE TO NEW IA OUTSIDE THE DELEGATION *</p> <p><b>REQUEST FOR AERIAL DELIVERY OF LINE ORDERS THROUGH <u>COMMUNICATIONS</u>.</b></p> <p><b>REQUEST FOR AA OR HELICOPTERS THROUGH <u>HELIBASE ON COMMAND</u></b></p> <p><b>SCHEDULE FLIGHTS AT EARLIEST POSSIBLE TIME THROUGH 503-551-3973</b></p> | <p><b>4. MEDICAL A/C:</b></p> <p><b>Short Haul Helicopter<br/>Located in Sunriver</b></p> <p><b>Follow IWI protocols in case<br/>of an emergency.</b></p> | <p><b>TFR<br/>2/2874<br/>(A-164)</b></p> <p><b>Freq. 126.5250</b></p> <p>Ceiling 11,000 MSL</p> <p>0700-2400</p> <p>[Check FAA Website<br/>for Updates]</p> |
|--------------------------------------------------------------------------------------------------------------------------------------------------------------------------------------------------------------------------------------------------------------------------------------------------------------------------------------------------------------------------------------------------------------------------------------------------------------------------------|-----------------------------------------------------------------------------------------------------------------------------------------------------------|-------------------------------------------------------------------------------------------------------------------------------------------------------------|

| 6. PERSONNEL      | NAME                   | PHONE #      | 7. FREQUENCIES          | AM                         | FM       | 8. FIXED-WING Avail/ Type/ Make-Model/ N#/ Base                                                                                                                                                                                   |
|-------------------|------------------------|--------------|-------------------------|----------------------------|----------|-----------------------------------------------------------------------------------------------------------------------------------------------------------------------------------------------------------------------------------|
| AOBD              | Paul Balfour           | 509-993-8739 | A/A TFR                 | 126.5250                   |          | ATGS Platforms: Available as needed from Pool                                                                                                                                                                                     |
| ASGS              | Albert Faria           | 907-419-5415 | A/A (Fixed Wing) A-28   | 132.4750                   |          |                                                                                                                                                                                                                                   |
| ASGS(t)           | Dan Sebern             | 970-210-1798 | A/A (Rotor Wing) A-53   | 120.0250                   |          |                                                                                                                                                                                                                                   |
| ATGS (Pool)       | Amanda Hickman         | 541-892-0854 |                         |                            |          | Airtankers: Order thru ATGS<br>UAS – UR-31/32 (A-171) Ed Yue 304-906-9065                                                                                                                                                         |
| ATGS (Pool)       | Justin Wood            | 541-420-2890 | A/G West Primary A- 29  |                            | 168.3375 |                                                                                                                                                                                                                                   |
| HEBM              | Steve Spellberg        | 781-789-1561 | A/G West Secondary A-30 |                            | 169.4625 | Crescent Airport (5S2) Elevation 4819'<br>43 ° 31.967402N 121 ° 57.015535W<br>AIS Hotsy at helibase for bucket/tank rinsing                                                                                                       |
|                   |                        |              | A/G West Firing A-65    |                            | 171.8375 |                                                                                                                                                                                                                                   |
| Oakridge Helibase |                        | 503-551-3973 |                         |                            |          |                                                                                                                                                                                                                                   |
| UAO NW OR         | Justin Vernon          | 541-224-3627 |                         |                            |          | Email addresses:<br>Finance: <a href="mailto:2022.cedarcreek.finance@firenet.gov">2022.cedarcreek.finance@firenet.gov</a><br>Helibase: <a href="mailto:2022.cedarcreek.helibase@gmail.com">2022.cedarcreek.helibase@gmail.com</a> |
| UAO Central OR    | Jessica Sherwood       | 458-218-2649 |                         |                            |          |                                                                                                                                                                                                                                   |
| Oakridge Helibase | Primary Contact Number | 503-551-3973 | CTAF/UNICOM             | 122.9                      |          | OAKRIDGE AIRPORT: N°43 45.16 X W 122° 30.28 (1393')                                                                                                                                                                               |
|                   |                        |              | DECK                    | 163.100 (Tone) rx/tx 136.5 |          |                                                                                                                                                                                                                                   |

| FAA N# | TY | MAKE/ MODEL | BASE     | START | AVAIL | REMARKS      | FAA N#  | TY | MAKE/ MODEL | BASE     | START | AVAIL | REMARKS           |
|--------|----|-------------|----------|-------|-------|--------------|---------|----|-------------|----------|-------|-------|-------------------|
| N804PJ | 1  | UH-60       | Sunriver | 0700  | 0900  | Bucket A-12  | HT1048Y | 1  | S-61A       | Sunriver | 0700  | 0900  | H20/On Loan A-190 |
| N635CK | 1  | S-61        | Sunriver | 0700  | 0900  | Bucket A-188 | N350HQ  | 3  | AS 350 B3   | Sunriver | 0700  | 0900  | Short Haul        |
| N611CK | 1  | S-61        | Sunriver | 0700  | 0900  | Bucket A-187 | N854H   | 3  | Bell 407    | Sunriver | 0700  | 0900  | PSD/PAX/H20 A-162 |
| N805RA | 1  | K-MAX       | Crescent | 0700  | 0900  | Bucket A-197 | N171PL  | 1  | K-MAX       | Crescent | 0700  | 0900  | Bucket A-35       |

# INCIDENT RADIO COMMUNICATIONS PLAN (ICS 205)

Controlled Unclassified Information//Basic

|                          |                                |                                        |                                      |
|--------------------------|--------------------------------|----------------------------------------|--------------------------------------|
| <b>1. Incident Name:</b> | <b>2. Date/Time Prepared:</b>  | <b>3. Operational Period: DAY</b>      |                                      |
| CEDAR CREEK              | Date: 10/11/2022<br>Time: 1259 | Date/Time From:<br>10/12/2022 0700 WED | Date/Time To:<br>10/13/2022 0700 THU |

| 4. Basic Radio Channel Use: |      |               |                                             |                          |            |             |            |             |                  |                               |
|-----------------------------|------|---------------|---------------------------------------------|--------------------------|------------|-------------|------------|-------------|------------------|-------------------------------|
| Zone Group                  | Ch # | Function      | Channel Name/Trunked Radio System Talkgroup | Assignment               | RX Freq    | RX Tone/NAC | TX Freq    | TX Tone/NAC | Mode (A,D, or M) | Remarks                       |
|                             | 1    | COMMAND       | CMD 1                                       | DIV A / Y AND NIGHT      | 170.0000 N | 136.5       | 166.6750 N | 136.5       | A                | LOCATED - HUCKLEBERRY MTN     |
|                             | 2    | COMMAND       | CMD 2                                       | DIV T / W / X AND NIGHT  | 170.6875 N | 136.5       | 166.5750 N | 136.5       | A                | LOCATED - WOLF MT             |
|                             | 3    | COMMAND       | CMD 3                                       | DIV R / T AND NIGHT      | 171.0625 N | 136.5       | 162.8125 N | 136.5       | A                | LOCATED - THE TWINS           |
|                             | 4    | COMMAND       | CMD 4                                       | DIV A / P AND NIGHT      | 171.9000 N | 136.5       | 165.9875 N | 136.5       | A                | LOCATED - NE OF BOX CANYON    |
|                             | 5    | COMMAND       | CMD 5                                       | DIV P / R AND NIGHT      | 170.0125 N | 136.5       | 165.2500 N | 136.5       | A                | LOCATED - CULTUS MTN          |
|                             | 6    | COMMAND       | CMD 6                                       | POTTER/BIG SWAMP         | 170.2625 N | 136.5       | 165.8125 N | 136.5       | A                | LOCATED - WARNER MTN          |
|                             | 7    | COMMAND       | HUCKLEBERRY                                 | WIF FOREST NET           | 170.4625 N | 103.5       | 164.8250 N | 103.5       | A                | POTTER/BIG SWAMP FIRES        |
|                             | 8    | TACTICAL      | TAC 8                                       | DIV A/R AND STAGING      | 168.6000 N | 136.5       | 168.6000 N | 136.5       | A                | SHARED TACTICAL               |
|                             | 9    | TACTICAL      | TAC 9                                       | DIV T                    | 166.7250 N | 136.5       | 166.7250 N | 136.5       | A                |                               |
|                             | 10   | TACTICAL      | TAC 10                                      | DIV W                    | 166.7750 N | 136.5       | 166.7750 N | 136.5       | A                |                               |
|                             | 11   | TACTICAL      | TAC 11                                      | DIV X / POTTER;BIG SWAMP | 168.2500 N | 136.5       | 168.2500 N | 136.5       | A                | SHARED TACTICAL               |
|                             | 12   | TACTICAL      | TAC 12                                      | DIV Y / P AND NIGHT      | 171.1125 N | 136.5       | 171.1125 N | 136.5       | A                | SHARED TACTICAL               |
|                             | 13   | AIR TO GROUND | A/G PRI                                     | AIR TO GROUND PRIMARY    | 168.3375 N |             | 168.3375 N |             | A                | AIR OPS PRIMARY               |
|                             | 14   | AIR TO GROUND | A/G SEC                                     | AIR TO GROUND SECONDARY  | 169.4625 N |             | 169.4625 N |             | A                | AIR OPS SECONDARY             |
|                             | 15   | AIR TO GROUND | VMED 29                                     | EMERGENCY USE            | 155.3475 N |             | 155.3475 N | 156.7       | A                | STATE INTEROP FOR MED FLIGHTS |
|                             | 16   | AIR GUARD     | AIRGUARD                                    | AIR GUARD                | 168.6250 N |             | 168.6250 N | 110.9       | A                | EMERGENCY AIR CONTACT         |

**5. Special Instructions:** COMMUNICATION PHONE: (208) 891-8093 24-Hours

|                                                       |                    |                                |
|-------------------------------------------------------|--------------------|--------------------------------|
| <b>6. Prepared By</b><br>(Communications Unit Leader) | Name: MISSY PARKER | Signature: <i>Missy Parker</i> |
| ICS 205                                               | IAP Page           | Date/Time: 10/11/2022 1259     |

Controlled Unclassified Information//Basic

# INCIDENT RADIO COMMUNICATIONS PLAN (ICS 205)

Controlled Unclassified Information//Basic

|                          |                                |                                        |                                      |
|--------------------------|--------------------------------|----------------------------------------|--------------------------------------|
| <b>1. Incident Name:</b> | <b>2. Date/Time Prepared:</b>  | <b>3. Operational Period: DAY</b>      |                                      |
| CEDAR CREEK - IA         | Date: 10/11/2022<br>Time: 1900 | Date/Time From:<br>10/12/2022 0700 WED | Date/Time To:<br>10/13/2022 0700 THU |

| 4. Basic Radio Channel Use: |      |               |                                             |                        |            |             |            |             |                  |                                          |
|-----------------------------|------|---------------|---------------------------------------------|------------------------|------------|-------------|------------|-------------|------------------|------------------------------------------|
| Zone Group                  | Ch # | Function      | Channel Name/Trunked Radio System Talkgroup | Assignment             | RX Freq    | RX Tone/NAC | TX Freq    | TX Tone/NAC | Mode (A,D, or M) | Remarks                                  |
|                             | 1    | COMMAND       | DEF OD                                      | SOUTHEAST              | 171.2625 N | 103.5       | 164.1875 N | 146.2       | A                | DESCHUTES ODELL                          |
|                             | 2    | COMMAND       | HUCKLEBERRY                                 | NORTHWEST              | 170.4625 N | 103.5       | 164.8250 N | 103.5       | A                | WIF FOREST NET                           |
|                             | 3    | COMMAND       | WOLF                                        | SOUTHWEST              | 170.4625 N | 103.5       | 164.8250 N | 192.8       | A                | WIF WOLF                                 |
|                             | 4    | COMMAND       | DEF LO C                                    | NORTH CENTRAL          | 170.4750 N | 103.5       | 163.1625 N | 167.9       | A                | LOOKOUT CENTRAL/SOUTH                    |
|                             |      |               |                                             |                        |            |             |            |             |                  |                                          |
|                             | 6    | TACTICAL      | DEF TAC1                                    | EAST                   | 166.8875 N |             | 166.8875 N |             | A                | DESCHUTES FIRE TAC 1                     |
|                             | 7    | TACTICAL      | DEF TAC2                                    | EAST                   | 167.6500 N |             | 167.6500 N |             | A                | DESCHUTES FIRE TAC 2                     |
|                             | 8    | TACTICAL      | PROJ MDL                                    | WEST TACTICAL PRIMARY  | 168.7750 N | 103.5       | 168.7750 N | 103.5       | A                | PROJECT MIDDLE FORK                      |
|                             | 9    | TACTICAL      | PROJ MCK                                    | WEST TACTICAL          | 168.7250 N | 103.5       | 168.7250 N | 103.5       | A                | PROJECT MCKENZIE                         |
|                             | 10   | TACTICAL      | PROJ SRZ                                    | WEST TACTICAL          | 166.5625 N | 103.5       | 166.5625 N | 103.5       | A                | SANTIAM RIVER PROJECT                    |
|                             | 11   | AIR TO GROUND | A/G 61                                      | AIR TO GROUND EAST     | 169.2875 N |             | 169.2875 N |             | A                | INITIAL ATTACK AIR/GROUND PRIMARY EAST   |
|                             | 12   | AIR TO GROUND | A/G 37                                      | AIR TO GROUND WEST     | 167.3000 N |             | 167.3000 N |             | A                | INITIAL ATTACK AIR/GROUND SECONDARY EAST |
|                             | 13   | AIR TO GROUND | A/G 50                                      | AIR TO GROUND PRI WEST | 168.2875 N |             | 168.2875 N |             | A                | INITIAL ATTACK AIR/GROUND PRIMARY WEST   |
|                             | 14   | AIR TO GROUND | A/G 09                                      | AIR TO GROUND SEC WEST | 166.9125 N |             | 166.9125 N |             | A                | INITIAL ATTACK AIR/GROUND SECONDARY WEST |
|                             | 15   | AIR TO GROUND | VMED 29                                     | EMERGENCY USE          | 155.3475 N |             | 155.3475 N | 156.7       | A                | STATE INTEROP FOR MED FLIGHTS            |
|                             | 16   | AIR GUARD     | AIRGUARD                                    | AIR GUARD              | 168.6250 N |             | 168.6250 N | 110.9       | A                | EMERGENCY AIR CONTACT                    |

**5. Special Instructions: COMMUNICATIONS Phone: 208-891-8093**

|                                                       |                |                            |
|-------------------------------------------------------|----------------|----------------------------|
| <b>6. Prepared By</b><br>(Communications Unit Leader) | Name: PAUL NOA | Signature: <i>Paul Noa</i> |
| ICS 205                                               | IAP Page       | Date/Time: 10/11/2022 1900 |

Controlled Unclassified Information//Basic



# Resource Advisor Message

Cedar Creek Fire

Kailey Guerrant, Lead READ, 503-580-5387, [kailey.guerrant@usda.gov](mailto:kailey.guerrant@usda.gov)

## Suppression Repair Standards

### Waterbars

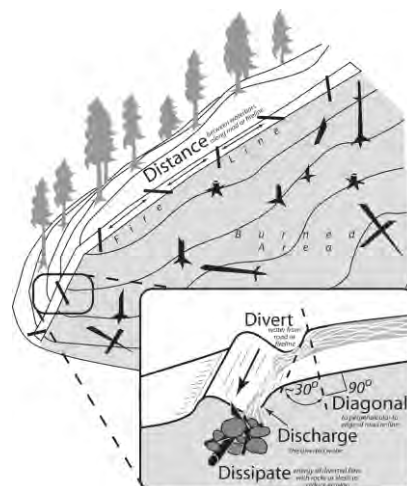
Height of water bar for handlines should average 6-12 inches. Height of machine-constructed water bars not to exceed 18 inches on slopes less than 40%. Height of machine-constructed water bars not to exceed 30 inches on slopes greater than 40%.

- Cut in the water bar – do not simply push up loose soil.
- Water bars should direct runoff away from the burned area where possible.
- Assure that the down slope end of the water bar is open and has adequate length to allow free flow of water off the fire line.
- Logs can be incorporated into water bars as long as they are embedded or anchored in a trench. Ensure fire end of log does not contact any organic material.
- Place slash below outlets of water bars to help slow runoff and collect sediment.

In selecting areas for establishing water bars the following should be considered:

- Locate bars at natural slope breaks. The idea is to move water off the fire line before it can build up enough energy to erode soil.
- When possible, locate bars where the outlet empties onto a resistant surface (i.e. rock or log debris).
- Locate bar outlets to provide maximum buffer distance to stream channel.
- Angle of water bars should be 20-45 degrees to the line.

| Fire Line Slope % | Maximum Water Bar Spacing (feet) |
|-------------------|----------------------------------|
| 2-5               | 300                              |
| 6-10              | 200                              |
| 11-15             | 150                              |
| 16-20             | 100                              |
| 21-35             | 75                               |
| 36+               | 50                               |



### Dozer Line Repair

- Pull in berms and woody debris developed in construction of fireline. Distribute this material over the surface of the fire line, similar to the density of the surrounding area.
- Blockade lines at intersect with roads by placing logs and slash across the lines for 300 feet or site distance to minimize motorized use. Take extra care to return the entry points to a natural appearance that blends in with the surrounding landscape to the extent possible.
- At some line intersections with roads, it may be necessary to block access by constructing earthen berms and/or place boulders, heavy logs, slash, and other large vegetative material at the beginning of dozer line. These sites will be identified in Field Maps.
- Other blockage may be identified if lines exposed sensitive areas to future human intrusion.
- Lines requiring native seeding or weed-free mulching will **be identified in the Field Maps. If there isn't enough debris to achieve 50% ground cover, REAFs may identify areas where weed free straw, or wood mulch is needed. Work with a resource advisor to implement seeding where necessary.**

### Chipping Standards

- Provide a 30- foot buffer of no chipping at water crossings or culverts.
- Do not place chips into road ditch.
- Do not chip onto a steep slope where chips will slide back into the ditch.
- Broadcast chipped material, ensuring that chips are no more than 4" deep.

## 640 Road: Cutting and Piling Specifications

- Within the wildlife habitat area: Load and transport piled log rounds from both sides of road and remove outside the core. Pile this material OUTSIDE the wildlife area at designated locations to be later burned following the specs below (NO burn piles within the wildlife habitat area).

### Pile Specifications:

- Okay to fell a few trees <12" DBH within the current fuel break (West) side of road to accommodate the following burn pile specs, as coordinated with onsite READs.
- Min dimensions: 6 ft. W x 6 ft. H with brush and small debris at base;
- Max dimensions: Can NOT encroach into a 25 ft. buffer around adjacent leave trees;
- Chip and broadcast spray material on either side of the road but keep outside of any stream channels

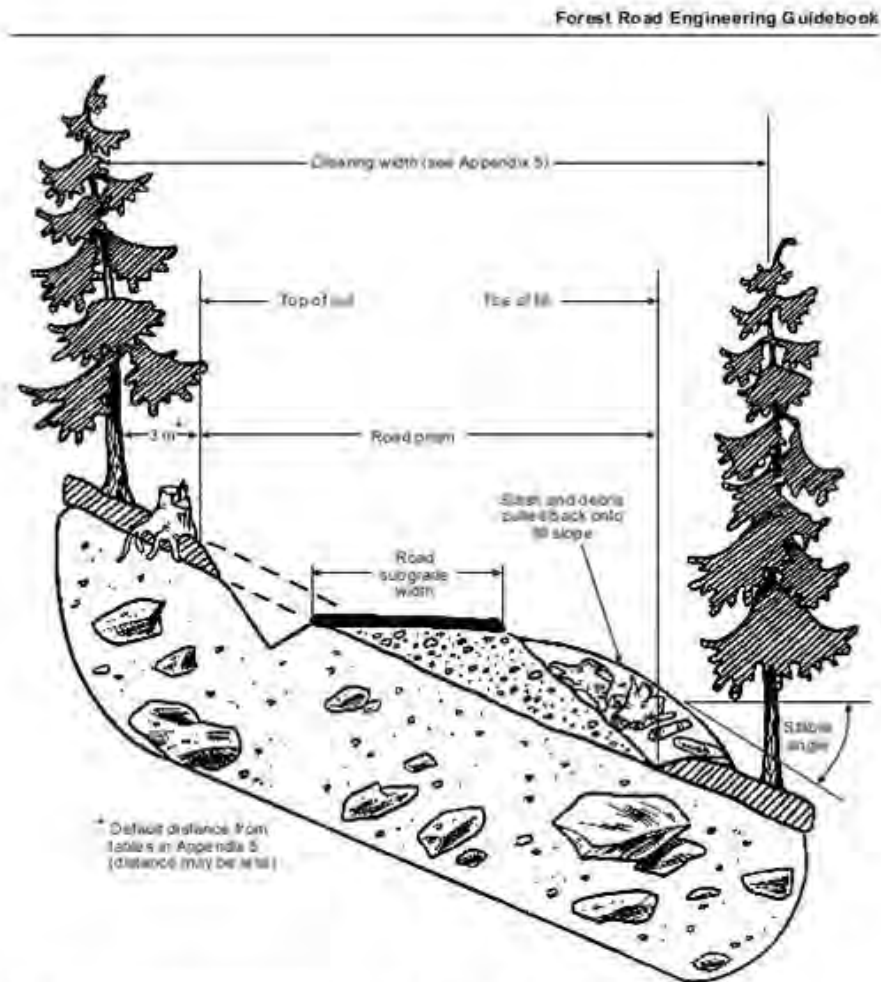


Figure 2. Typical roadway on moderate slopes with no additional clearing.

Please reach out to the REAF assigned to your division with any questions or concerns.

# DEMOB INSTRUCTIONS

## *Cedar Creek, Junction Camp, Big Swamp & Potter*

**AIR TRAVEL – All resources requiring air travel to their home unit must call DEMOB 72 hours in advance of departure date to make travel arrangements.**

**DEMOB LOCATIONS:** All demobs will occur at the resource current locations (Oakridge ICP or Junction Camp). Please follow the steps in this order.

1. **IAP:** Refer to the Tentative Demob list for your assigned Demob date/time.
2. **WEED WASH:** All OFF-ROAD resources need to complete a weed wash before leaving. Weed wash is located at Kokanee Staging near Oakridge ICP and Pit Staging near Junction Camp.
3. **GROUND SUPPORT:** Equipment contractors need to pick up inspection forms at Ground Support. If damage or claims are reported an inspection may be performed. Ground Support will inform Demob when completed.
4. **COMMUNICATIONS AND SUPPLY:** Turn in all checked out items to the respective units. As items are returned, Demob will be notified.
5. **FINANCE:** Report to Finance and close out all final paperwork.
6. **DEMOB:** Once closed out in Finance, call Demob at 541-482-1331. If no answer, try again in a few minutes. If still no answer, then leave a message with the following information:
  - a. Your Resource Order Number
  - b. Name of Resource/Company
  - c. City/State you are traveling to
  - d. Estimate time of departure and arrival
    - i. Rest overnight (RON) location if applicable.

**This is the last step before you start your travel.**

\*\*\*\*\*

**Demob: 541-482-1331                      [2022.cedarcreek.demob@firenet.gov](mailto:2022.cedarcreek.demob@firenet.gov)**



# Training Message



Sadly, many any of us can relate to this - and have the binders to prove it. Completing Position Task Books expands on what you learn in required instructor-led courses by providing an opportunity to gain experience and skills while doing the work. You get to practice what you learn on a number of assignments until you, your evaluator and your home unit training committee are confident that you can do the job on your own.

Trainees - Please make the effort to learn everything you can from your trainer. Ask questions and be open to instruction.

Trainers – Please share your knowledge and provide opportunities for your trainee to perform the duties on their own. Provide honest feedback in a constructive way.

Feel free to contact me if you have any questions or concerns about the process.

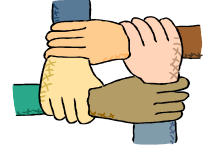
**Debra Packard, Training Specialist**  
559-623-2983 or [debra\\_packard@firenet.gov](mailto:debra_packard@firenet.gov)

[USE QR CODE BELOW TO CHECK IN WITH TRAINING](#)





# Human Resource Message



Different  
Individuals  
Valuing  
Each other  
Regardless of  
Skin  
Intellect  
Talents or  
Years

Great leaders seek to make the team stronger by encouraging participation and contribution from a variety of human beings. They recognize the value of diversity – employees with different skills and experiences can provide a new approach and fresh perspective to a problem. They understand what a boring work environment it would be if we all looked and thought the same.

Susie Manezes, HRSP  
602-571-9327

Debra Packard, HRSP  
559-623-2983

## **LOGISTICS (Hours of Operation & Information)**

### **OAKRIDGE BASE CAMP**

|               |                             |                      |
|---------------|-----------------------------|----------------------|
| Kitchen/Meals | 0530 - 0900<br>1730 – 2030  | Breakfast<br>Dinner  |
| Showers       | 0530 – 1200 and 1430 - 2200 |                      |
| Laundry       | 0500 - 1200 and 1700 - 2200 | 1.5 hour turn around |

### **KOKANEE STAGING**

|                |                                               |                                                                                                                                                                         |
|----------------|-----------------------------------------------|-------------------------------------------------------------------------------------------------------------------------------------------------------------------------|
| Ground Support | 0530 - 2100                                   |                                                                                                                                                                         |
| Mechanic       | 0600 - 2100                                   |                                                                                                                                                                         |
| Inspections    | 0530 - 2100                                   |                                                                                                                                                                         |
| Weed Wash      | 0700 - 2100                                   |                                                                                                                                                                         |
| Supply         | 0530 - 2100                                   | Email to <a href="mailto:2022.cedarcreek.supply@gmail.com">2022.cedarcreek.supply@gmail.com</a>                                                                         |
| Ordering**     | 0600 - 2100                                   | Email to <a href="mailto:2022.cedarcreek.ordering@firenet.gov">2022.cedarcreek.ordering@firenet.gov</a>                                                                 |
| Fuel           | 0600 - 1100<br><br>1300 - 1800<br>1830 - 2100 | Please fill locally if you have capabilities<br><br><b>**Note:</b> Please don't mix any fuel until ready to use. If you do mix it, remember to label it with mix ratio. |

### **JUNCTION CAMP**

20111 Crescent Lake Hwy, Crescent OR 97733

|               |                             |                     |
|---------------|-----------------------------|---------------------|
| Kitchen/Meals | 0615 – 0900,<br>1830 - 2130 | Breakfast<br>Dinner |
| Showers       | 0600 – 1200, 1400 - 2200    |                     |
| Supply        | 0600 - 2130                 |                     |

### **LAVA ODELL STAGING**

|                |                                        |  |
|----------------|----------------------------------------|--|
| Ground Support | 0530 – 2100                            |  |
| Fuel           | 0600 -1100, 1300 – 1800<br>1830 - 2100 |  |
| Weed Wash      | 0700 - 2100                            |  |

#### Ordering Instructions:

1. You must give a date and time needed with a minimum of 48 hours in the future, you can add in the comments "Or sooner if possible".
2. You must your put contact information on the 213.
3. Put both Ordering and Supply (in the "To" block) on your 213 so when it arrives at supply, so they know who to contact.
4. All orders must be approved and signed by Division or higher in Operations or Unit Leader or higher in other sections.



# Finance Message



Finance Email: [2022.cedarcreek.finance@firenet.gov](mailto:2022.cedarcreek.finance@firenet.gov)

SUBJECT: Include Key Word **TIME** for Overhead, Crews & Cooperators

SUBJECT: Include Key Word **EQUIPMENT** for Contract Resources

OAKRIDGE FINANCE: 971-239-6880

Please Scan this QR code to send all required documents to finance or use the email below



**FINANCE CHECK IN:** [2022.cedarcreek.finance@firenet.gov](mailto:2022.cedarcreek.finance@firenet.gov)

PLEASE ENSURE THE BELOW DOCUMENTS ARE EMAILED

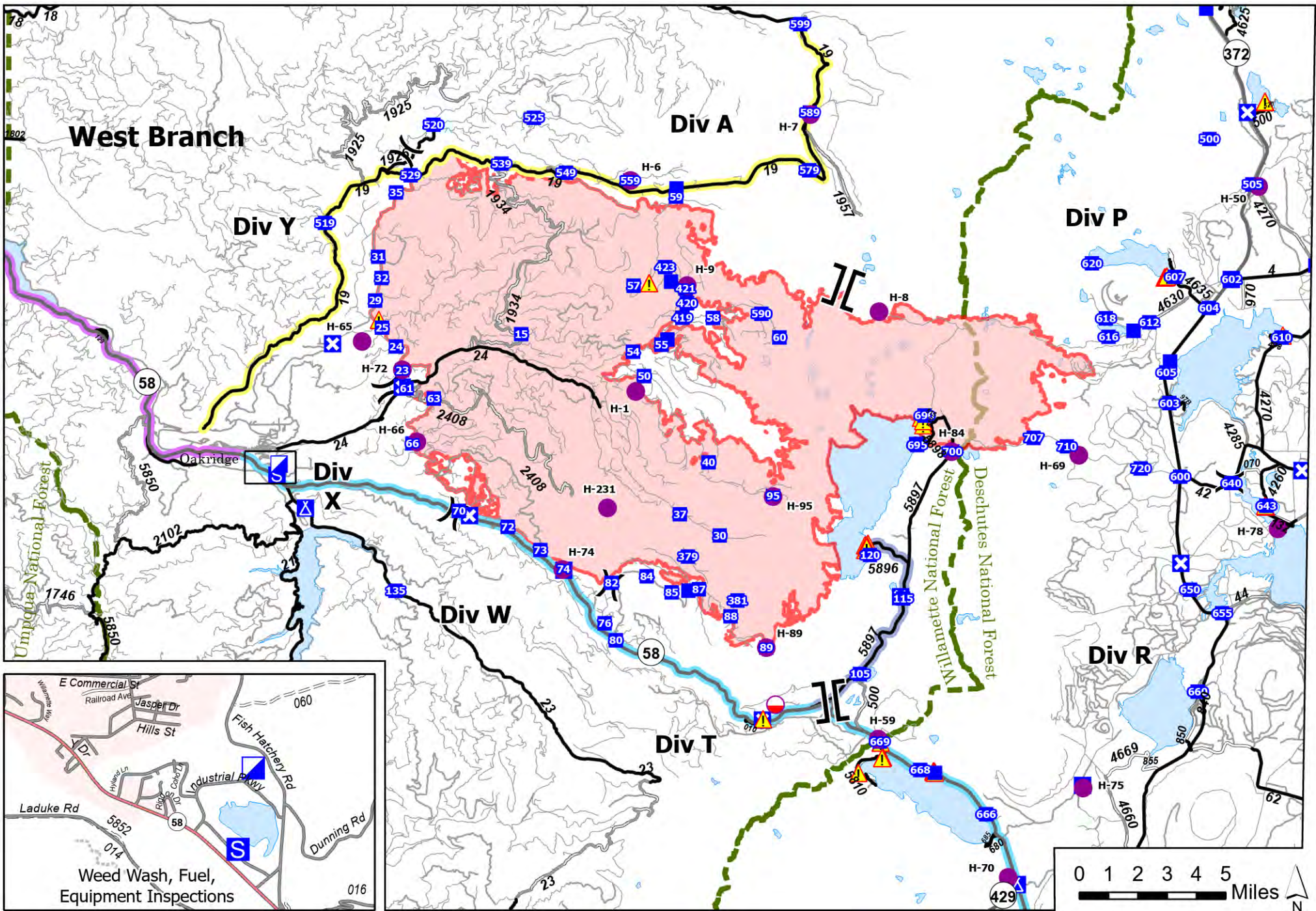
| Overhead, Crews & Cooperator Resources                                                                                                                                                                                                                                                                                                                          | Contract Resources                                                                                                                                                                                                                                                                                                                                                                                                                                   |
|-----------------------------------------------------------------------------------------------------------------------------------------------------------------------------------------------------------------------------------------------------------------------------------------------------------------------------------------------------------------|------------------------------------------------------------------------------------------------------------------------------------------------------------------------------------------------------------------------------------------------------------------------------------------------------------------------------------------------------------------------------------------------------------------------------------------------------|
| <ul style="list-style-type: none"> <li>• <b>Check-In:</b> Crew Manifest, Cooperative Agreement (if applies), AD Hire Letter, Resource Order</li> <li>• <b>Daily:</b> Crew Time Report (CTR), Shift Tickets</li> <li>• <b>Demob:</b> Signed OF288, Final Equipment Use Invoice (Cooperator) If you don't have a way to sign you must come to finance.</li> </ul> | <ul style="list-style-type: none"> <li>• <b>Check-In:</b> Resource Order, Contract/VIPR Agreement (make sure you have your UEI, Pre-Inspection</li> <li>• <b>Daily:</b> Shift Tickets, receipts (fuel issues, claims, etc.)</li> <li>• <b>Demob:</b> Contractor Evaluations, Final Shift Tickets and receipt(s) for Addition/Deductions, Post-Inspection, Final Signed Invoices If you don't have a way to sign you must come to finance.</li> </ul> |

## REMINDERS

- ★ PLEASE ENSURE YOU INCLUDE LOCATION OF WHERE YOU ARE WORKING (CEDAR CREEK DIVISION /POTTER) ON THE CTR OR SHIFT TICKET. MAKE SURE C OR E # IS ON THE CTR OR SHIFT TICKET
- ★ PLEASE SHOW YOUR LUNCH BREAK
- ★ PLEASE USE MILITARY TIME (0001-2400)
- ★ WHEN CLAIMING HAZARD PAY YOU MUST INCLUDE THE SUPPRESSION ACTION BEING PERFORMED. THIS INCLUDES OPERATIONS WHICH DIRECTLY SUPPORT CONTROL OF FIRE (E.G., ACTIVITIES TO EXTINGUISH THE FIRE, FIREFIGHTING, GROUND SCOUTING, SPOT FIRE PATROLLING, SEARCH AND RESCUE OPERATIONS, AND BACKFIRING).
- ★ WHEN SIGNING YOUR OF-288 or OF-286 PLEASE DO NOT LOCK IT or PROTECT THE SIGNATURE, WE HAVE TO BE ABLE TO SIGN IT AND SEND YOU A COPY







### Transportation

Cedar Creek  
OR-WIF-220180  
10/12/2022 24 Hour

- |                       |                       |              |                                |                                          |
|-----------------------|-----------------------|--------------|--------------------------------|------------------------------------------|
| Mobile Retardant Base | Incident Command Post | Staging Area | Gravel Road                    | Oakridge to DP 599 - 1 hr. 35 min.       |
| Helispot              | Drop Point            | Hazard       | Dirt Roads                     | Bristow State Park to Oakridge - 31 min. |
| Division Break        | Closure               | Highway      | Unimproved Roads               | OR-58 to DP 120 - 26 min.                |
| Branch Break          | Camp                  | Paved Road   | Oakridge to Crescent - 55 min. |                                          |







## COVID-19 Mitigations for Cedar Creek Fire

- Masks are not required indoors unless working in a county with a HIGH COVID-19 community level. Currently, Lane County community level is LOW (masking indoors is optional).
- Conduct daily verbal screening checks within crews, report any COVID-like symptoms to your direct supervisor. Supervisors should report any positive symptoms to the Medical Unit for next steps.
- Observe social distancing standards while waiting in line for food and limit contact with others outside of your crew in the food service line. If possible, send crew representatives to pick up meals.
- Practice good personal hygiene, wash hands frequently and disinfect high-traffic areas on a regular basis.
- Limit close contact between firefighters and the public as much as possible to prevent exposure and spread.





# EMERGENCY PLAN INCIDENT WITHIN AN INCIDENT

## ON SCENE INCIDENT COMMANDER

In the event of an accident or medical incident of any size, your primary responsibility is to ENSURE that the victim(s) receive prompt and effective Triage, Treatment, Extrication and Transport.

- **ENSURE THE MEDICAL INCIDENT REPORT IN THE INCIDENT ACTION PLAN IS BEING USED AND FOLLOWED- \*IF DETERMINED TO BE A GREEN, DO NOT DECLARE EMERGENCY TRAFFIC AND ONLY COMPLETE LINE 1-4 ON MIR\*.**
- Conduct size-up of the incident nature of accident, number type of resources involved, latitude and longitude location (DD°MMM.MM format): notify incident communications center and supervisor, request assistance as needed.
- Order and coordinate medical and support response to the accident.
- Evaluate special needs (law enforcement, haz mat, etc.).
- Clear the command frequency if medical emergency, coordinate with incident communications and air attack for air medical transportation needs.
- Preserve and photograph the scene for accident investigation.
- Remain aware of surroundings and the status of the main incident (delegate personnel to monitor the main fire) to ensure safety of medical treatment personnel.
- Until relieved, supervise and manage all personnel involved at the incident scene.

## MEDICAL PLAN (ICS 206 WF)

| Incident/Project Name                                                               |                                                                                                  | 1. Operational Period                                     |                                       |                                                                                |              |                   |  |                               |
|-------------------------------------------------------------------------------------|--------------------------------------------------------------------------------------------------|-----------------------------------------------------------|---------------------------------------|--------------------------------------------------------------------------------|--------------|-------------------|--|-------------------------------|
| Cedar Creek-Potter/Big Swamp                                                        |                                                                                                  | October 12-13, 2022<br>0700-0700                          |                                       |                                                                                |              |                   |  |                               |
| 2. Ambulance Services                                                               |                                                                                                  |                                                           |                                       |                                                                                |              |                   |  |                               |
| Name                                                                                | Complete Address                                                                                 | Phone                                                     | Advanced Life Support (ALS)           |                                                                                |              |                   |  |                               |
|                                                                                     |                                                                                                  |                                                           | Yes                                   | No                                                                             |              |                   |  |                               |
| Oakridge Fire & EMS                                                                 | 47592 Hwy 58 Oakridge, OR                                                                        | Command Dispatch 541-682-3978                             | X                                     |                                                                                |              |                   |  |                               |
| Eugene Springfield Fire Dept                                                        | 403 Main St. Springfield, OR                                                                     | Command 541-682-5899                                      | X                                     |                                                                                |              |                   |  |                               |
| Sun River Fire & Rescue                                                             | 57475 Abbott Dr Sunriver, OR                                                                     | Command                                                   | X                                     |                                                                                |              |                   |  |                               |
| La Pine Fire & Rescue                                                               | 51590 Huntington Rd La Pine, OR                                                                  | Command                                                   | X                                     |                                                                                |              |                   |  |                               |
| 3. Air Ambulance Services                                                           |                                                                                                  |                                                           |                                       |                                                                                |              |                   |  |                               |
| Name                                                                                | Phone                                                                                            | Location                                                  |                                       |                                                                                |              |                   |  |                               |
| Emergency Air Transport                                                             | Command Secondary 911                                                                            | Varies based on Availability<br>Use VMED 29 air to ground |                                       |                                                                                |              |                   |  |                               |
| Short Haul                                                                          | Command Secondary 911                                                                            | Crescent, OR<br>AS 350 N350HQ                             |                                       |                                                                                |              |                   |  |                               |
| 4. Hospitals                                                                        |                                                                                                  |                                                           |                                       |                                                                                |              |                   |  |                               |
| Name<br>Complete Address                                                            | Coordinate Standard<br>Degrees Decimal Minutes<br>DD° MM.MMM' N - Lat<br>DD° MM.MMM' W -<br>Long |                                                           | Travel<br>Time<br>From ICP<br>Air Gnd |                                                                                | Phone        | Helipad<br>Yes No |  | Level<br>of Care<br>Facility  |
|                                                                                     |                                                                                                  | Lat:                                                      |                                       |                                                                                |              |                   |  |                               |
| Sacred Heart Medical Center (Riverbend)<br>3333 Riverbend, Drive<br>Springfield, OR | Long:                                                                                            | 44°04.881' N                                              | 15<br>mi<br>ns                        | 1 hr                                                                           | 541-222-6931 | X                 |  | Level 2                       |
|                                                                                     |                                                                                                  | 123°01.588' W                                             |                                       |                                                                                |              |                   |  |                               |
| Legacy Emanuel<br>2801 N Gantenbien<br>Portland, OR                                 | Long:                                                                                            | 45°32.59' N                                               | 30<br>mi<br>ns                        | 3 hrs                                                                          | 503-413-2200 | X                 |  | Level 1 Trauma<br>Burn Center |
|                                                                                     |                                                                                                  | 122°40.16' W                                              |                                       |                                                                                |              |                   |  |                               |
| St Charles Medical Center<br>2500 NE Neff Rd<br>Bend, OR                            | Long:                                                                                            | 44°04.102' N                                              | 45<br>mi<br>ns                        | 1.45 hrs                                                                       | 541-706-7777 | X                 |  | Level 2                       |
|                                                                                     |                                                                                                  | 121°16.053' W                                             |                                       |                                                                                |              |                   |  |                               |
| 5. Division<br>Branch<br>Group                                                      | Capability                                                                                       |                                                           |                                       | Personnel                                                                      |              |                   |  |                               |
| Div. A                                                                              | ALS Ambulance<br>EMPF, EMTF, UTV                                                                 |                                                           |                                       | Ambo 1 (E-99)<br>Medic 34 (S-1333)                                             |              |                   |  |                               |
| Div. T                                                                              | ALS Ambulance<br>EMPF, EMTF, UTV<br>EMPF<br>EMTF                                                 |                                                           |                                       | Ambo 3 (E-257)<br>Medic 35 (S-1334)<br>Medic Ontko (O-939.3)<br>BLS 55 (O-987) |              |                   |  |                               |
| Div. W                                                                              | EMPF, (3) EMTF, Side by side, High<br>Angle Rope Extraction                                      |                                                           |                                       | REMS 1 (S-279)                                                                 |              |                   |  |                               |
| Div. X                                                                              | EMPF, EMTF, UTV                                                                                  |                                                           |                                       | RAT 2 (S-1127)                                                                 |              |                   |  |                               |

## MEDICAL PLAN (ICS 206 WF)

|                                             |                                                                              |                                                         |                            |
|---------------------------------------------|------------------------------------------------------------------------------|---------------------------------------------------------|----------------------------|
| <b>Div. Y</b>                               | ALS Ambulance<br>EMPF, (3) EMTF, Side by side, High<br>Angle Rope Extraction | Ambo 7 (E-5405)<br>REMS 12 (S-5428)                     |                            |
| <b>Div. P</b>                               | ALS Ambulance<br>EMPF, EMTF, UTV<br>EMPF, EMTF, UTV                          | Ambo 9 (E-5465)<br>Medic 3 (S-5052)<br>Medic 7 (S-449)  |                            |
| <b>Div. R</b>                               | ALS Ambulance<br>EMPF, EMTF, UTV<br>EMPF, EMTF, UTV                          | Ambo 6 (E-5115)<br>Medic 1 (S-5049)<br>Medic 2 (S-5051) |                            |
| <b>Night Shift</b>                          | Command/911                                                                  |                                                         |                            |
| <b>Junction Spike</b>                       | Lee Venning MEDL Mariann Turley MEDL-t                                       |                                                         |                            |
| <b>Potter/Big<br/>Swamp</b>                 | ALS Ambulance                                                                | Ambo 2 (E-176)                                          |                            |
| <b>Oakridge<br/>Camp</b>                    | (D) Diana Braun MEDL Edna Flores MEDL<br>(N) John Nokes – MEDL               |                                                         |                            |
| <b>6. Prepared By (Medical Unit Leader)</b> | <b>7. Date/Time</b>                                                          | <b>8. Reviewed By (Safety Officer)</b>                  | <b>9. Date/Time</b>        |
| <b>Diana Braun</b>                          | <b>10/11/2022<br/>1800</b>                                                   | <b>Jack Cates</b><br><i>Jack Cates</i>                  | <b>10/11/2022<br/>1800</b> |

# Short-Haul Operations

## CAPABILITIES

- During an operational Short-Haul the helicopter is capable of inserting Short-Haulers into an area with tight canopy cover and/or technical terrain.
- Haul line lengths range from 100 feet to 350 feet.
- Short hauler and/or medical gear can be delivered to the medical scene even if extraction by short-haul is not necessary.

## ORDERING

- EMT or Medical Incident IC determines medical extraction is required.
- Follow local established procedures and/or Medical Incident Report (MIR) in the IRPG.
- Confirm aircraft type, call sign, estimated time of arrival and frequency.
- Give site selection information when ordering: hazards (i.e. ash, smoke, snags, aerial), tree height, terrain, and patient transport configuration (supine or seated position). Repeat hazards and give updated weather conditions as well as brief patient update to responding helicopter.

**PROCESS:** The helicopter will fly to the coordinates provided. They will make contact with ground personnel on scene with the patient using an identified air-to-ground frequency. The helicopter will complete a short-haul recon and size up, gather patient update information and then fly to a landing zone (LZ) to configure for short-haul operations. The helicopter will be monitoring the appropriate air-to-ground, air guard and victor frequencies. From this point, ground resources should only contact the helicopter in case of an emergency. During the insertion and extraction process ground personnel must be clear of the area.

## ON SCENE: EXPECT THE FOLLOWING

- 1 or 2 rescuers (at least one qualified as an EMT or higher)
- Backboard (if needed and not already on scene)
- All equipment necessary for patient extraction

The Patient Extraction Bag accommodates most backboards.  
-A patient on a backboard, TRS, SKED or litter will be inserted into the bag.



The Seat Harness is used for patients not requiring the use of a backboard.



IAP INSERT



# MEDICAL PLAN (ICS 206 WF)

Controlled Unclassified Information//Basic

## Medical Incident Report

**FOR A NON-EMERGENCY INCIDENT, WORK THROUGH CHAIN OF COMMAND TO REPORT AND TRANSPORT INJURED PERSONNEL AS NECESSARY.**

**FOR A MEDICAL EMERGENCY: IDENTIFY ON SCENE INCIDENT COMMANDER BY NAME AND POSITION AND ANNOUNCE "MEDICAL EMERGENCY" TO INITIATE RESPONSE FROM IMT COMMUNICATIONS/DISPATCH.**

Use the following items to communicate situation to communications/dispatch.

1. CONTACT COMMUNICATIONS / DISPATCH (**Verify correct frequency prior to starting report**)

*Ex: "Communications, Div. Alpha. Stand-by for Emergency Traffic."*

2. INCIDENT STATUS: *Provide incident summary (including number of patients) and command structure.*

*Ex: "Communications, I have a Red priority patient, unconscious, struck by a falling tree. Requesting air ambulance to Forest Road 1 at (Lat./Long.) This will be the Trout Meadow Medical, IC is TFLD Jones. EMT Smith is providing medical care."*

|                                                   |                                                                                                                                                                                                                                                                                                                                                                                                                                                                                                                                                                                                                                     |                                                                                         |
|---------------------------------------------------|-------------------------------------------------------------------------------------------------------------------------------------------------------------------------------------------------------------------------------------------------------------------------------------------------------------------------------------------------------------------------------------------------------------------------------------------------------------------------------------------------------------------------------------------------------------------------------------------------------------------------------------|-----------------------------------------------------------------------------------------|
| Severity of Emergency / Transport Priority        | <input type="checkbox"/> RED / PRIORITY 1 Life or limb threatening injury or illness. Evacuation need is IMMEDIATE<br><i>Ex: Unconscious, difficulty breathing, bleeding severely, 2° – 3° burns more than 4 palm sizes, heat stroke, disoriented.</i><br><input type="checkbox"/> YELLOW / PRIORITY 2 Serious Injury or illness. Evacuation may be DELAYED if necessary.<br><i>Ex: Significant trauma, unable to walk, 2° – 3° burns not more than 1-3 palm sizes.</i><br><input type="checkbox"/> GREEN / PRIORITY 3 Minor Injury or illness. Non-Emergency transport<br><i>Ex: Sprains, strains, minor heat-related illness.</i> |                                                                                         |
| Nature of Injury or Illness & Mechanism of Injury |                                                                                                                                                                                                                                                                                                                                                                                                                                                                                                                                                                                                                                     | <i>Brief Summary of Injury or Illness<br/>(Ex: Unconscious, Struck by Falling Tree)</i> |
| Transport Request                                 |                                                                                                                                                                                                                                                                                                                                                                                                                                                                                                                                                                                                                                     | <i>Air Ambulance / Short Haul/Hoist<br/>Ground Ambulance / Other</i>                    |
| Patient Location                                  |                                                                                                                                                                                                                                                                                                                                                                                                                                                                                                                                                                                                                                     | <i>Descriptive Location &amp; Lat. / Long. (WGS84)</i>                                  |
| Incident Name                                     |                                                                                                                                                                                                                                                                                                                                                                                                                                                                                                                                                                                                                                     | <i>Geographic Name + "Medical"<br/>(Ex: Trout Meadow Medical)</i>                       |
| On-Scene Incident Commander                       |                                                                                                                                                                                                                                                                                                                                                                                                                                                                                                                                                                                                                                     | <i>Name of on-scene IC of Incident within an Incident (Ex: TFLD Jones)</i>              |
| Patient Care                                      |                                                                                                                                                                                                                                                                                                                                                                                                                                                                                                                                                                                                                                     | <i>Name of Care Provider<br/>(Ex: EMT Smith)</i>                                        |

3. INITIAL PATIENT ASSESSMENT: *Complete this section for each patient as applicable (start with the most severe patient)*

Patient Assessment: See IRPG page 106

Treatment:

4. TRANSPORT PLAN:

Evacuation Location (if different): *(Descriptive Location (drop point, intersection, etc.) or Lat. / Long.)* Patient's ETA to Evacuation Location:

Helispot / Extraction Site Size and Hazards:

5. ADDITIONAL RESOURCES / EQUIPMENT NEEDS:

*Example: Paramedic/EMT, Crews, Immobilization Devices, AED, Oxygen, Trauma Bag, IV/Fluid(s), Splints, Rope rescue, Wheeled litter, HAZMAT, Extrication*

6. COMMUNICATIONS: Identify State Air/Ground EMS Frequencies and Hospital Contacts as applicable

| Function    | Channel Name/Number | Receive (RX) | Tone/NAC * | Transmit (TX) | Tone/NAC * |
|-------------|---------------------|--------------|------------|---------------|------------|
| COMMAND     |                     |              |            |               |            |
| AIR-TO-GRND |                     |              |            |               |            |
| TACTICAL    |                     |              |            |               |            |

7. CONTINGENCY: **Considerations:** *If primary options fail, what actions can be implemented in conjunction with primary evacuation method? Be thinking ahead.*

8. ADDITIONAL INFORMATION: *Updates/Changes, etc.*

**REMEMBER:** Confirm ETA's of resources ordered. Act according to your level of training. Be Alert. Keep Calm. Think Clearly. Act Decisively.

Controlled Unclassified Information//Basic