



Incident Action Plan

CEDAR CREEK

POTTER & BIG SWAMP

October 16, 2022
Operational Period
Dayshift - 0700-2000

SCAN QR CODE

For

BRIEFING LINK
DOWNLOAD IAP
DOWNLOAD MAPS

Send in **PHOTOS**
CHECK-IN

Submit **TIME** to **FINANCE**



Cedar Creek - OR-WIF-220180 – P6PYP6 (0618)

Cedar Creek – WA DNR – 221-IWA

Potter – OR-WIF-220170 – P6PX6A (0618)

Big Swamp – OR-WIF-220189 – P6PY6M (0618)


This page intentionally left blank.



INCIDENT OBJECTIVES (ICS 202)

1. Incident Name:	2. Operational Period:	
CEDAR CREEK	Date/Time From: 10/16/2022 0700 SUN	Date/Time To: 10/16/2022 2000 SUN
3. Objective(s):		
<p>Provide for firefighter and public safety; specifically manage risk to firefighters by ensuring hazards are identified, assessed and where possible mitigated. Be prepared to accept residual risk when exposure is commensurate with values threatened and the probability of achieving objectives is high.</p> <p>Implement operational plans to keep fire within established primary control lines to protect identified values at risk including:</p> <ul style="list-style-type: none"> • Oakridge, Westfir, and High Prairie • Highway 58 and Forest Road 19 • Union Pacific railroad corridor • Waldo Lake and associated recreational investments • Private infrastructure and recreational investments within surrounding Cascade Lakes Highway • Willamette Pass Ski-Area; Private infrastructure, and Forest Recreational Investments <p>Promote coordination and partnership by developing clear dialogue and providing timely information between the IMT, affected agencies, and the public. Engage in effective communication with Agency Administrators and cooperators.</p> <p>Coordinate with Resource Advisors to complete fire suppression and approved repair work to protect natural and cultural values.</p>		
4. Operational Period Command Emphasis:		
Complete operational assignments and tasks as directed in the IAP and by your Division Supervisor to avoid mission creep.		
General Situational Awareness:		
Monitor the weather, especially wind. Ensure overhead hazards are mitigated and L.C.E.S. is in place.		
5. Site Safety Plan Required? Yes <input checked="" type="checkbox"/> No <input type="checkbox"/>		
Approved Site Safety Plan(s) Located ICP		
6. Incident Action Plan (the items checked below are included in this Incident Action Plan):		
<input checked="" type="checkbox"/> ICS 202 <input checked="" type="checkbox"/> ICS 203 <input checked="" type="checkbox"/> ICS 204 <input checked="" type="checkbox"/> ICS 205 <input type="checkbox"/> ICS 205A <input checked="" type="checkbox"/> ICS 206	<input checked="" type="checkbox"/> ICS 207 <input type="checkbox"/> ICS 208 <input checked="" type="checkbox"/> ICS 220 <input checked="" type="checkbox"/> Map/Chart <input checked="" type="checkbox"/> Weather Forecast/Tides/Currents	Other Attachments: <input checked="" type="checkbox"/> FIRE BEHAVIOR, SAFETY MESSAGE <input checked="" type="checkbox"/> HR MESSAGE, FINANCE <input checked="" type="checkbox"/> LOGISTICS INFO, PHONE LISTS <input checked="" type="checkbox"/> UNIT LOG, CHECK-IN / DEMOB
7. Prepared by: JILL JOHNSON	Position/Title: PSC2	Signature: <i>Jill Johnson</i>
8. Approved by Incident Commander:	Name: JEFF DIMKE	Signature: <i>Jeff Dimke</i>
ICS 202	IAP Page	Date/Time: 10/15/2022 2000

ORGANIZATION ASSIGNMENT LIST (ICS 203)

1. Incident Name:		2. Operational Period:	
CEDAR CREEK		Date/Time From: 10/16/2022 0700 SUN	Date/Time To: 10/16/2022 2000 SUN
3. Incident Commander(s) and Command Staff:		6. Logistics Section:	
IC/UC	BOB SHINDELAR	CHIEF	KEVIN HAUGHTON KAREN ZIRKLE (T)
DEPUTY	JEFF DIMKE	DEPUTY	RANDY SPIERING (JUNCTION CAMP)
SAFETY OFFICER	JACK CATES; TROY CORN PHIL GRAHAM (T)	SUPPLY UNIT	JOHN KAUPA
INFORMATION OFFICER	LIV STECKER	FACILITIES UNIT	TOM BOYD WHIT SPENCER
LIAISON OFFICER	SCOTT CRAWFORD JEFF SEVIGNEY	GROUND SUPPORT UNIT	DAVE HARSH (ICP) JON KAUTT (JUNCTION CAMP)
HUMAN RESOURCES	SUSIE MANEZES (ICP) DEBRA PACKARD (JUNCTION CAMP)	MEDICAL UNIT	DIANA BRAUN (ICP) LEE VENNING (JUNCTION CAMP)
		COMMUNICATIONS UNIT	MISSY PARKER PAUL NOA
4. Agency/Organization Representative(s):		FOOD UNIT	LAURA MILLER
Agency/Organization	Name	SECURITY UNIT	JIM MURRAY (OAKRIDGEICP) JAKE SCHMALZ (JUNCTION CAMP)
WILAMETTE NF - AA	DARREN CROSS	7. Operations Section:	
DESCHUTES NF - AREP	ROBERT GENTRY	FIELD OPS	AARON ROWE MIKE DAVIS (T)
MIDDLE FORK DIST RANGER	MOLLY JUILLERANT	PLANNING OPS	KURT RANTA HECTOR MEDRANO (T)
MIDDLE FORK DIST FMO	JIMMER HUNT	STRATEGIC OPS	TONY ENGEL (VIRTUAL)
WILLAMETTE NF - FOREST SUP	DUANE BISHOP		
DESCHUTES NF - FOREST SUP	HOLLY JEWKES	DIVISION/GROUP	A / Y ISAIAH SALSKY
LEAD READ	MARK RICHARDSON	DIVISION/GROUP	S JASON EMHOFF DON GALLAGHER (T)
		DIVISION/GROUP	T SAM STEINSHOUER
5. Planning Section:		DIVISION/GROUP	P / R ERIC BADER
CHIEF	JILL JOHNSON	DIVISION/GROUP	W / X BOB HINDS
DEPUTY	MARGE HUTCHINSON	DIVISION/GROUP	POTTER/BIG SWAMP QUIN ANDERSON MATT PEDERSON (T)
RESOURCES UNIT	TERI PARVIN HOWARD JOHNSON (VIRTUAL)	7b. Air Operations Branch:	
SITUATION UNIT	SCOTT BLISS	AIR OPS BRANCH DIRECTOR	PAUL BALFOUR
DOCUMENTATION UNIT	DEIDRE SMITH (VIRTUAL)	AIR SUPPORT SUPERVISOR	ALBERT FARIA
DEMOBILIZATION UNIT	MIKE HESTON (VIRTUAL)	8. Finance/Administration Section:	
FIRE BEHAVIOR ANALYST	DON STRAND	CHIEF	CHERI FULLER
TRAINING SPECIALIST	DEBRA PACKARD	DEPUTY	CHRISTINA GOEBEL
GIS SPECIALIST	SHAWN BUSHNELL MIKE TONKEL	TIME UNIT	STEVE CROW
IT SPECIALIST	GEORGE JENKINS CHARLENE JUMPER	PROCUREMENT UNIT	MARK BOHNET
INCIDENT METEOROLOGIST	BOB TOBIN	COST UNIT	KAY HIGH (VIRTUAL)
AIR RESOURCE ADVISOR	MARLENE DEPIETRO	ICPI	ROB HECHINGER
9. Prepared By:	Name: JILL JOHNSON	Position/Title: PSC	Signature: 
ICS 203	IAP Page	Date/Time: 10/15/2022 2000	

FIRE WEATHER FORECAST

FORECAST NO:	72	NAME OF FIRE:	Cedar Creek
PREDICTION FOR:	Sunday, Oct 16, 2022	UNIT:	OR-WIF-220180
ISSUED:	1900 PDT, Oct 15, 2022	Incident Meteorologist:	Bob Tobin

*** A LITTLE COOLER WITH BETTER RELATIVE HUMIDITY***

DISCUSSION: The strong ridge of high pressure will get nudged east slightly today through Tuesday. Strong and gusty offshore flow will become onshore Sunday afternoon, then southerly on Monday. This will result in cooler temperatures and higher relative humidity through Tuesday.

SUNDAY: VERY DRY WITH GUSTY MORNING WIND

WEATHER:	Sunny with areas of smoke and haze.	MAX TEMPS:	West: 72-82 East: 70-80
WIND (EYE LEVEL, MPH):	Sheltered areas: E-SE 6-10 mph. Becoming up-slope 5-7 mph after 1100 Ridges, unsheltered areas, wind-aligned drainages: E-SE 12-16 gusts to 30 mph...decreasing to SE 8-12 mph after 1200 East of the Crest: E-SE 8-12 gusts to 20 mph.	MIN RH:	West: 18-24% East: 20-26%
HAINES (HIGH LEVEL):	5 (Stability 2, moisture 3)	CWR:	0%
PEAK MIXING HEIGHT/WIND:	6,000 ft AGL/SE 5-10 mph	Rain Amount:	0.00
INVERSION:	Weak mixing out after 1200.	LAL:	1

SUNDAY NIGHT: POOR RECOVERIES ON THE RIDGES

WEATHER:	Clear, Areas of smoke and haze.	CWR:	0%
WIND (EYE LEVEL, MPH):	Sheltered areas, mid-slopes, and valley bottoms: E-SE 5-7 mph...becoming drainage 2-4 mph after 2100 Ridges: E-SE 7-10 mph. East Side: NE-SE 5-10 mph.	Rain Amount:	0.00
MIN TEMPS:	Ridges: 50-55, Mid-slope and below: 40-50%, East: 30-40.		
MAX RH:	Ridges to mid-slope: 35-45%, Mid-slope and below: 30-40%, East of the crest: 70-80%		
INVERSION:	Strong developing on mid-slope after 1900.		

MONDAY:

WEATHER:	Clear in the morning...increasing clouds in the afternoon. Widespread smoke and haze.	MAX TEMPS:	West: 65-75 East: 60-70
WIND (EYE LEVEL, MPH):	Sheltered areas: up-slope 3-6 mph after 1100. Ridges, unsheltered areas, wind-aligned drainages: NW 5-10 gusts to 12 mph. East of the Crest: VRB 5-10 mph.	MIN RH:	West: 30-40% East: 25-30%
HAINES (HIGH LEVEL):	4 (Stability 2, moisture 2)	CWR:	0%
PEAK MIXING HEIGHT/WIND:	5,500 ft AGL/W-NW 5-10 mph	Rain Amount:	0.00
INVERSION:	Strong, mid-slope, mixing out after 1200	LAL:	1

EXTENDED OUTLOOK:

TUESDAY:	Partly cloudy. Highs mid-60s to mid-70s...Min RH 25-35%...E-SE winds 5-10 mph...becoming NW 5-10 mph.
WEDNESDAY:	Mostly sunny. Highs upper 60s to 80s...Min RH 20-30%...E-SE winds 5-10mph...Becoming N 5-10 mph after 1200.
THURSDAY:	Sunny. Highs upper 60s to 80s...Min RH 20-30%...NW 5-10 mph gusts to 12 mph.

FIRE BEHAVIOR FORECAST

FORECAST NUMBER: 71	TYPE OF FIRE: Wildland Fire
FIRE NAME: Cedar Creek	OPERATIONAL PERIOD: 10/16/2022, 0700-2000
DATE ISSUED: 10/15/2022	TIME ISSUED: 1900
UNIT: USFS-OR-WIF	SIGNED: Don Strand, FBAN

INPUTS

WEATHER SUMMARY: Sunny with areas of smoke and haze. **Max Temps:** near 80. **Min RH:** Near 18%. **Winds:** Sheltered areas: E-SE 6-10 mph. Becoming up-slope 5-7 mph after 1100. **Ridges, unsheltered areas, wind-aligned drainages:** E-SE 12-16 gusts to 30 mph, decreasing to SE 8-12 mph after 1200. **East of the Crest:** E-SE 8-12 gusts to 20 mph.

See Weather Forecast for detailed information

Fire Behavior Summary

GENERAL: Primary fuel types are TL5 and TU5. **TL5** is compact short needle conifer litter, found primarily in 2nd growth Douglas fir plantations. **TU5** is timber overstory with very high surface fuel load- short needle conifer with heavy brush and down log fuel loading in mature or old growth stands. Lichen is present across the landscape and spots readily. Timber stands with needle litter (**TL3**), dominated by Fir, Hemlock, or Lodgepole Pine. **TL8** is timber stands with needle litter dominated by Ponderosa Pine.

Surface Fuel Type	Head Fire ROS	Head FL	Spot Distance
Understory and litter fuels	2 to 8 ch/hr or feet/min.	Up to 2-8 feet	Up to 0.5 mile

Haines	Probability of Ignition	Fine dead fuel moisture 1-hour	10-hour dead fuel moisture	1000- hour fuel moisture
5 (High)	60 to 90%.	3-7%	5 to 8%	12 to 15%

Elevated fire behavior potential. Live and dead fuels are dry and available to carry fire and where the fuels are exposed to winds, expect increased fire intensity with an increase in torching. Generally, fire spread will be similar to what was observed yesterday. In areas with available fuels, potential for short upslope runs exist. Lichen reacts quickly to changes in humidity and contribute to short-range spotting. Areas of thick smoke may affect fire intensity. With the lower nighttime humidity, fire may of back or flank into areas with available fuels and be in position to make short upslope runs with torching and spotting.

Today's Fire Behavior

DIV A/Y: Expect mostly smoldering and creeping with isolated torching due to heavy fuels under sheltered canopy. Expect continued backing fire spread down slope in areas of available fuels.

DIV W. X: Expect smoldering and creeping fire behavior in interior unburned islands of fuels. Potential for single tree torching. In areas with steeper slopes with heavy surface loading, potential exists for short uphill runs.

DIV T. S: Surface fire spread in heavy fuels with single and group torching. Potential for short upslope runs exists. Smoldering and creeping in needle litter under regeneration stands with very limited torching. Potential for spotting from rolling material in areas with steeper slopes. There will likely be spot fires from yesterday or even last night fire behavior.

DIV P/R: Smoldering, creeping, backing and flanking fire spread in the heavy surface fuels. Expect occasional torching with isolated short-range spotting.

AIR OPERATIONS: Expect limited visibility due to smoke. Weak inversion, mixing out after 1200.

SAFETY

Multiple areas of fire activity will require Lookouts, Communications, and Escape Routes and Safety Zones being established before engaging fire suppression. Be sure to watch for changing conditions throughout the operational period. Remember, LCES applies to all tasks we do while assigned to fires.



SAFETY MESSAGE

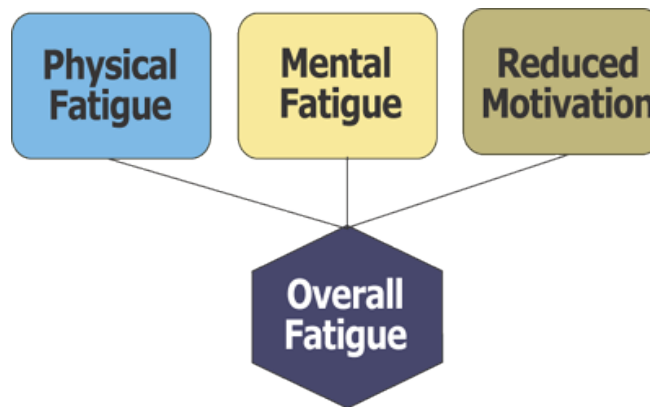
16 October 2022

INCIDENT: CEDAR CREEK

OPERATIONAL PERIOD: 0700-2000

TOPICS:

If it's predictable, it's preventable. Hone your situational awareness skills to recognize and mitigate hazards in advance.



You know when things aren't right, trust your instincts. It's been a long fire season, make sure that you are taking care of yourself. Eat right, stay hydrated, personal hygiene, rest, and most of all get your times into finance.

Highway 58 Construction

There is not supposed to be any road construction activity through the weekend. Resources should still be vigilant and drive defensively while on the Highway 58 corridor.

SAFETY OFFICER: Troy Corn, Jack Cates and Phil Graham (t)

Deliberate Risk Assessment-Hazard Summary

16 OCT 2022

Hazard	Mitigation	Post Risk
Extraction Time	Identify medivac sites and helispots. Initiate ground transport to accident site for transport capability. Identify EMT/EMTP from resources assigned to division. Provide line qualified paramedics to each division as available. Review IWI protocol to ensure familiarity. Utilize agency and civilian medivac as treatment/timing dictates. Evaluate on-going need for repositioning medical personnel. Provide Dust abatement on Helispots as needed.	HIGH
Aircraft	Utilize Air Attack. Ensure all resources are a safe distance from all bucket and retardant drops. Establish LCES. Utilize air to ground primary for fixed wing, air to ground 2 for bucket work as needed. Reference IRPG (Safe aircraft operations pg. 61-62). Ensure IA resources have coordination with unassigned local air resources to provide deconfliction.	HIGH
Railroad Right-of-Way	Implement work windows/slow orders with Union Pacific when personnel are working near the right-of-way. Post lookouts at each end of work zones.	HIGH
Hazard Trees	Use avoidance to limit exposure time. Fall ahead to avoid exposure. Use qualified fallers or alternate methods if needed. Conduct on- going risk analysis of all work areas. Follow Hazard Tree Safety Guidelines (IRPG page 20-21).	HIGH
Heavy Equipment	Post lookouts around equipment work areas. Establish communications with equipment boss and operator. Do not work down slope from equipment. Follow agency guidelines for chipping operations.	HIGH
Physical Factors	Maintain hydration schedule. Closely monitor work rate and implement rest periods. Maintain nutrition. Ensure adequate work/rest.	MODERATE
Fire Behavior	Be aware of burn windows and weather impacts and min/max RH for flashy fuels/local conditions. Report changes to FBAN and IMET. Establish MAP for disengagement to provide for an orderly retreat given lack of safety zones. Have a plan for disengagement that establishes a designated meeting point and maintains personnel accountability.	MODERATE
Steep Terrain/Gravity	Establish LCES. Do not work crews above or below each other. Post lookouts for rolling material. Watch footing in loose soil, rock and around vegetation. Do not work below heavy equipment. Scout and identify travel routes.	MODERATE
Transportation	Coordinate with ODOT for construction windows and areas of one lane traffic along HWY58. Provide daily updates of construction progress. Sign all incident roads that provide access to divisions. Provide daily updated travel plan maps. Practice defensive driving. In local communities obey the posted speed limits. Use reader boards to provide advanced warning and control entry to base camp as needed. Identify and evaluate contingency and alternate escape and travel routes. Provide dust abatement and grading as needed. Provide advanced scouting for transport access and bridge weight restrictions.	MODERATE
Unburned Fuels/Firing Ops	Establish LCES. Ensure management action points are implemented and followed. Weather updates as needed during burning operations. Locate indirect firelines to minimize unburned fuels. Follow Interagency Ignition Guide. Ensure communications between all firing operations. Establish road security at all firing sites. Follow approved firing plan for unburned fuels.	MODERATE
Environmental Factors	Assign medical personnel to camp. Assess for known allergies and report to medical personnel. Obtain Bee Bopper/wasp spray and yellow jacket traps. Maintain an awareness wildlife and poison oak. Identify and report allergies to your chain of command.	MODERATE
Communication	Evaluate for dead zones prior to engagement. Utilize human repeaters as needed. Ensure accountability of resources in problem areas. Spiking resources must have communication coverage.	LOW
Viral Transmission Mitigations, Communicable Disease	Maintain awareness of health, perform self checks, maintain social distancing, wear face coverings in accordance with CDC recommendations. Report and isolate if not feeling well. Use remote briefings, spike camps and logistical layouts that provide for social distancing as necessary. Establish liaison with Lane County Public Health.	LOW
Public Interaction	Implement area and road closures as necessary. Maintain a lookout for hunters in and out of closure areas. Maintain awareness of evacuation areas and provide accurate information dissemination.	LOW
Initial Attack	Ensure identified IA resources are briefed of expectations and ensure communication plan is provided. Ensure resources are briefed on IA command structure. Provide identified crews with area maps.	LOW

Division/Group Assignment List (ICS 204 WF)
Controlled Unclassified Information//Basic

1. Incident Name:				3.		
CEDAR CREEK				Branch:	Division/Group A / Y	
2. Operational Period:						
Date/Time From: 10/16/2022 0700 SUN		Date/Time To: 10/16/2022 2000 SUN				
4. Operations Personnel						
FIELD OPERATIONS		AARON ROWE MIKE DAVIS (T)		DIVISION/GROUP SUPERVISOR		ISAIAH SALSKY
AIR OPERATIONS BRANCH DIRECTOR		PAUL BALFOUR		SAFETY OFFICER		TROY CORN; JACK CATES PHIL GRAHAM (T)
5. Resources Assigned this Period						
Strike Team / Task Force / Resource Designator		LWD	Leader	Number Persons	Drop Off PT./Time	Pick Up PT./Time
O-1054 SOF2		10/21	PAUL BRNA	1	ICP/0700	ICP/2000
O-1028 TFLD		10/17	DAVID MAYNARD	1	ICP/0700	ICP/2000
O-1138 TFLD		10/27	HALE REDDING	1	ICP/0700	ICP/2000
O-1190 TFLD		10/27	ANDREW HASTINGS	1	ICP/0700	ICP/2000
O-1162 HEQB		10/27	LEVI SENSENIG	1	ICP/0700	ICP/2000
O-868 FMOD PACIFIC RIDGELINE		10/31	SAM HOLSTAD	2	ICP/0700	ICP/2000
O-1045 FMOD GOODSON LOGGING		10/25	NATHANIEL ZELLER	2	ICP/0700	ICP/2000
C2IA WIL HAND CREW #501 (L/L)		10/16	JESUS SARAZ	16	ICP/0700	ICP/2000
E-567 ENG6 FIRST STRIKE		10/16	SPENCER BERLIER	3	ICP/0700	ICP/2000
E-590 ENG6 DIAMOND ROAD MAINTENANCE		10/21	TYLER DWER	3	ICP/0700	ICP/2000
E-596 ENG3 TORRES CONTRACTING		10/20	CHAD CORWIN	3	ICP/0700	ICP/2000
E-554 WTT2 PARAGON WATER TENDERS		10/23	BILL POTTS	1	ICP/0700	ICP/2000
E-5077 SKD2 HOFBAUER		10/25	ALEX HOMER	2	ICP/0700	ICP/2000
E-564 DUMP RUSSEL MANAGEMENT		10/17	MASHALL MECHAIM	1	ICP/0700	ICP/2000
O-1039 REAF (T)		10/25	SUNYA INCE-JOHANNSEN	1	ICP/0700	ICP/2000
8. Division/Group Communication Summary						
Function	Channel	RX Frequency N/W	RX Tone/NAC	TX Frequency N/W	TX Tone/NAC	Mode
COMMAND	1	170.0000 N	136.5	166.6750 N	136.5	A
TACTICAL	10	166.7750 N	136.5	166.7750 N	136.5	A
AIR TO GROUND	13	168.3375 N		168.3375 N		A
AIR TO GROUND	14	169.4625 N		169.4625 N		A
9. Prepared By (Resource Unit Leader)			Approved By (Planning Section Chief)		Date	Time
TERI PARVIN			JILL JOHNSON		10/15/2022	2000

Division/Group Assignment List (ICS 204 WF)
Controlled Unclassified Information//Basic

1. Incident Name:				3.		
CEDAR CREEK				Branch:	Division/Group A / Y	
2. Operational Period:						
Date/Time From: 10/16/2022 0700 SUN		Date/Time To: 10/16/2022 2000 SUN				
4. Operations Personnel						
FIELD OPERATIONS		AARON ROWE MIKE DAVIS (T)		DIVISION/GROUP SUPERVISOR		ISAIAH SALSKY
AIR OPERATIONS BRANCH DIRECTOR		PAUL BALFOUR		SAFETY OFFICER		TROY CORN; JACK CATES PHIL GRAHAM (T)
5. Resources Assigned this Period						
Strike Team / Task Force / Resource Designator		LWD	Leader	Number Persons	Drop Off PT./Time	Pick Up PT./Time
O-1145 LINE MEDIC KEMERER		10/26	KYLE KEMERER	1	ICP/0700	ICP/2000
E-99 AMBULANCE 1		10/25	GEORGE DUARTE	2	ICP/0700	ICP/2000
E-5405 AMBULANCE 7		10/18	ALVIN HORN	2	ICP/0700	ICP/2000
6. Control Operations/Work Assignments:						
<p>Task: Keep fire south of the 19 Rd and east of the 2409 Rd. Conduct suppression repair on the 750 and 1944 roads. Secure fire edge on the 19 and 1938 roads. Monitor, patrol, and mop up both direct and indirect primary lines.</p> <p>Purpose: Protect infrastructure and values at risk in the community of Oakridge and High Prairie.</p> <p>End State: Fire remains inside current containment lines. Roads are returned to pre-fire conditions.</p>						
7. Special Instructions:						
<ul style="list-style-type: none"> • Be IA ready. • Areas to be avoided are marked with either black/yellow or red dot on white flagging. • Consult Resource Advisors if you have any questions. • Backhaul all excess equipment. 						
8. Division/Group Communication Summary						
Function	Channel	RX Frequency N/W	RX Tone/NAC	TX Frequency N/W	TX Tone/NAC	Mode
COMMAND	1	170.0000 N	136.5	166.6750 N	136.5	A
TACTICAL	10	166.7750 N	136.5	166.7750 N	136.5	A
AIR TO GROUND	13	168.3375 N		168.3375 N		A
AIR TO GROUND	14	169.4625 N		169.4625 N		A
9. Prepared By (Resource Unit Leader)			Approved By (Planning Section Chief)		Date	Time
TERI PARVIN			JILL JOHNSON		10/15/2022	2000

Division/Group Assignment List (ICS 204 WF)
Controlled Unclassified Information//Basic

1. Incident Name:				3.		
CEDAR CREEK				Branch:	Division/Group	
2. Operational Period:						
Date/Time From: 10/16/2022 0700 SUN		Date/Time To: 10/16/2022 2000 SUN		P / R		
4. Operations Personnel						
FIELD OPERATIONS		AARON ROWE MIKE DAVIS (T)		DIVISION/GROUP SUPERVISOR ERIC BADER		
AIR OPERATIONS BRANCH DIRECTOR		PAUL BALFOUR		SAFETY OFFICER TROY CORN JACK CATES; PHIL GRAHAM (T)		
5. Resources Assigned this Period						
Strike Team / Task Force / Resource Designator		LWD	Leader	Number Persons	Drop Off PT./Time	Pick Up PT./Time
O-1114 SOFR		10/23	ALEC MCAFFEE	1	JUNCTION CAMP/0700	JUNCTION CAMP/2000
O-1037.60 TFLD		10/22	MICHAEL SCHINSTOCK	1	JUNCTION CAMP/0700	JUNCTION CAMP/2000
O-1164 TFLD		10/27	JOEL BURGETT	1	JUNCTION CAMP/0700	JUNCTION CAMP/2000
O-1193 TFLD (T)		10/28	ERICA ZACEK	1	JUNCTION CAMP/0700	JUNCTION CAMP/2000
O-1160 HEQB		10/26	JORDAN OLSEN	1	JUNCTION CAMP/0700	JUNCTION CAMP/2000
O-1180 HEQB (T)		10/28	DALTON LOVELESS	1	JUNCTION CAMP/0700	JUNCTION CAMP/2000
C-5034 CRW2 PACIFIC OASIS 10		10/16	DONTE MARQUEZ	20	JUNCTION CAMP/0700	JUNCTION CAMP/2000
C-5037 CRW2 MR CONTRACTING CREW 1		10/18	TOMAS GUZMAN GARCIA	20	JUNCTION CAMP/0700	JUNCTION CAMP/2000
E-595 ENG3 FIREMOG		10/21	KEVIN STULTZ	6	JUNCTION CAMP/0700	JUNCTION CAMP/2000
E-574 ENG6 OR-MAF 44		10/19	MITCHELL FORTE	4	JUNCTION CAMP/0700	JUNCTION CAMP/2000
E-587 ENG6 C & R REFORESTATION		10/21	JAY FLORA	3	JUNCTION CAMP/0700	JUNCTION CAMP/2000
E-5007 WTS2 PATRICK HUGHES TRUCKING		10/19	GARY HUGHES	1	JUNCTION CAMP/0700	JUNCTION CAMP/2000
E-5230 WTS2 K & R CONTRACTING, LLC		10/24	RAMA WOOD	1	JUNCTION CAMP/0700	JUNCTION CAMP/2000
E-5519 WTS2 CLAY'S FAB & REPAIR		10/25	CLAY ALVERNAZ	1	JUNCTION CAMP/0700	JUNCTION CAMP/2000
8. Division/Group Communication Summary						
Function	Channel	RX Frequency N/W	RX Tone/NAC	TX Frequency N/W	TX Tone/NAC	Mode
COMMAND	3	171.0625 N	136.5	162.8125 N	136.5	A
COMMAND	4	171.9000 N	136.5	165.9875 N	136.5	A
COMMAND	5	170.0125 N	136.5	165.2500 N	136.5	A
TACTICAL	8	168.6000 N	136.5	168.6000 N	136.5	A
AIR TO GROUND	13	168.3375 N		168.3375 N		A
AIR TO GROUND	14	169.4625 N		169.4625 N		A
9. Prepared By (Resource Unit Leader)			Approved By (Planning Section Chief)		Date	Time
TERI PARVIN			JILL JOHNSON		10/15/2022	2000

Division/Group Assignment List (ICS 204 WF)
Controlled Unclassified Information//Basic

1. Incident Name:				3.			
CEDAR CREEK				Branch:		Division/Group	
2. Operational Period:				P / R			
Date/Time From: 10/16/2022 0700 SUN		Date/Time To: 10/16/2022 2000 SUN					
4. Operations Personnel							
FIELD OPERATIONS		AARON ROWE MIKE DAVIS (T)		DIVISION/GROUP SUPERVISOR		ERIC BADER	
AIR OPERATIONS BRANCH DIRECTOR		PAUL BALFOUR		SAFETY OFFICER		TROY CORN JACK CATES; PHIL GRAHAM (T)	
5. Resources Assigned this Period							
Strike Team / Task Force / Resource Designator		LWD	Leader	Number Persons	Drop Off PT./Time	Pick Up PT./Time	
E-5376 GRD2 TABLE MOUNTAIN FORESTRY		10/26	CHRIS JAMES	2			
E-5501 EXC2 OWENS FREIGHT		10/21	TALON COLLINS	2	JUNCTION CAMP/0700	JUNCTION CAMP/2000	
E-5502 EXC2 OWENS FREIGHT LINES		10/27	KEVIN DEHEART	2	JUNCTION CAMP/0700	JUNCTION CAMP/2000	
E-383 CHSL ATLAS TREE SURGERY		10/25	CHAD LATHEM	2	JUNCTION CAMP/0700	JUNCTION CAMP/2000	
E-487 CHSL ATLAS TREE SURGERY		10/25	JASON MARTIN	2	JUNCTION CAMP/0700	JUNCTION CAMP/2000	
O-1059 REAF		10/18	JASON BERNARDS	1	JUNCTION CAMP/0700	JUNCTION CAMP/2000	
O-1153 REAF		10/25	CASEY SCHUDER	1	JUNCTION CAMP/0700	JUNCTION CAMP/2000	
S-5051 MEDIC 2		10/20	LAPEARL / LAWLER	2	JUNCTION CAMP/0700	JUNCTION CAMP/2000	
O-1171 LINE MEDIC GILE		10/27	ANDREW GILE	1	JUNCTION CAMP/0700	JUNCTION CAMP/2000	
E-5115 AMBULANCE 6		10/17	NEWMAN / MCDONNELL	2	JUNCTION CAMP/0700	JUNCTION CAMP/2000	
E-5465 AMBULANCE 9		10/18	SANDS / BENETT	2	JUNCTION CAMP/0700	JUNCTION CAMP/2000	
8. Division/Group Communication Summary							
Function	Channel	RX Frequency N/W	RX Tone/NAC	TX Frequency N/W	TX Tone/NAC	Mode	
COMMAND	3	171.0625 N	136.5	162.8125 N	136.5	A	
COMMAND	4	171.9000 N	136.5	165.9875 N	136.5	A	
COMMAND	5	170.0125 N	136.5	165.2500 N	136.5	A	
TACTICAL	8	168.6000 N	136.5	168.6000 N	136.5	A	
AIR TO GROUND	13	168.3375 N		168.3375 N		A	
AIR TO GROUND	14	169.4625 N		169.4625 N		A	
9. Prepared By (Resource Unit Leader)			Approved By (Planning Section Chief)			Date	Time
TERI PARVIN			JILL JOHNSON			10/15/2022	2000

Division/Group Assignment List (ICS 204 WF)
Controlled Unclassified Information//Basic

1. Incident Name:			3.			
CEDAR CREEK			Branch:		Division/Group	
2. Operational Period:			P / R			
Date/Time From: 10/16/2022 0700 SUN		Date/Time To: 10/16/2022 2000 SUN				
4. Operations Personnel						
FIELD OPERATIONS		AARON ROWE MIKE DAVIS (T)		DIVISION/GROUP SUPERVISOR		ERIC BADER
AIR OPERATIONS BRANCH DIRECTOR		PAUL BALFOUR		SAFETY OFFICER		TROY CORN JACK CATES; PHIL GRAHAM (T)
5. Resources Assigned this Period						
Strike Team / Task Force / Resource Designator		LWD	Leader	Number Persons	Drop Off PT./Time	Pick Up PT./Time
6. Control Operations/Work Assignments:						
<p>Task: Patrol the 4290 road. Complete suppression repair on the 640 road and Drop Point 640 to specifications identified by the local unit. Monitor fire growth near Taylor Burn GS by air.</p> <p>Purpose: Protect values at risk on the east side of Waldo Lake, Twin Lakes Lodge, Wickiup Reservoir, Davis Lake, and the community of Crescent, while minimizing additional resource damage.</p> <p>End State: Fire remains inside current containment lines. Control lines are repaired to suppression repair standards while minimizing the threat of the fire to values at risk.</p>						
7. Special Instructions:						
<ul style="list-style-type: none"> • Waldo Lake should not be used as a water source. • When working on the 640 road review Resource Advisor message - 640 Road Cutting & Piling Specifications • Be IA ready - See IA Communication Plan for Initial Attack. • Areas to be avoided are marked with either black/yellow or red dot on white flagging. • Consult Resource Advisors if you have any questions. • Backhaul all excess equipment. 						
8. Division/Group Communication Summary						
Function	Channel	RX Frequency N/W	RX Tone/NAC	TX Frequency N/W	TX Tone/NAC	Mode
COMMAND	3	171.0625 N	136.5	162.8125 N	136.5	A
COMMAND	4	171.9000 N	136.5	165.9875 N	136.5	A
COMMAND	5	170.0125 N	136.5	165.2500 N	136.5	A
TACTICAL	8	168.6000 N	136.5	168.6000 N	136.5	A
AIR TO GROUND	13	168.3375 N		168.3375 N		A
AIR TO GROUND	14	169.4625 N		169.4625 N		A
9. Prepared By (Resource Unit Leader)			Approved By (Planning Section Chief)		Date	Time
TERI PARVIN			JILL JOHNSON		10/15/2022	2000

Division/Group Assignment List (ICS 204 WF)
Controlled Unclassified Information//Basic

1. Incident Name:			3.			
CEDAR CREEK			Branch:		Division/Group	
2. Operational Period:			S			
Date/Time From: 10/16/2022 0700	SUN	Date/Time To: 10/16/2022 2000				
4. Operations Personnel						
FIELD OPERATIONS		AARON ROWE MIKE DAVIS (T)		DIVISION/GROUP SUPERVISOR		JASON EMHOFF DON GALLAGHER (T)
AIR OPERATIONS BRANCH DIRECTOR		PAUL BALFOUR		SAFETY OFFICER		TROY CORN JACK CATES; PHIL GRAHAM (T)
5. Resources Assigned this Period						
Strike Team / Task Force / Resource Designator	LWD	Leader	Number Persons	Drop Off PT./Time	Pick Up PT./Time	
O-1055 SOF2	10/19	MITCH WILSON	1	ICP/0700	ICP/2000	
O-1163 TFLD	10/27	TROY SANDERS	1	ICP/0700	ICP/2000	
TFLD (WIL)		SALUSKIN	1	ICP/0700	ICP/2000	
O-1142 HEQB	10/26	ADAM MCKEITH	1	ICP/0700	ICP/2000	
O-1075 FMOD TIRY TUDOR	10/21	JOSH TUDOR	1	ICP/0700	ICP/2000	
O-1076 FMOD TIMBER TIPPER	10/21	BRANDON DANVILLE	2	ICP/0700	ICP/2000	
C-132 CRW1 CHIEF MOUNTAIN IHC	10/26	JOVON JAMES FISHER	22	ICP/0700	ICP/2000	
C-120 CRW2 LOMAKATSU ECOLOGICAL	10/21	BRAULIO MAYA	20	ICP/0700	ICP/2000	
C-121 CRW2 WILL VALLEY REFORES. CREW 3	10/23	LAZARO MONTANO	20	ICP/0700	ICP/2000	
C-128 CR2I PACIFIC OASIS 14A	10/22	JASON MAZA	20	ICP/0700	ICP/2000	
E-592 ENG3 FIREMOG	10/21	MIKE PARENT	6	ICP/0700	ICP/2000	
E-589 ENG6 FENIX FORESTRY	10/21	SUZANNE FLYNN	3	ICP/0700	ICP/2000	
E-593 ENG3 J3 CONTRACTING	10/21	STEWART NICHOLS	3	ICP/0700	ICP/2000	
E-613 ENG4 FIREMOG LLC	10/26	JACE HOFFMAN	3	ICP/0700	ICP/2000	
E-614 ENG4 NORTH PACIFIC FORESTRY	10/26	TIM TEEL	3	ICP/0700	ICP/2000	
ENG4 452 WIF MFRD (L/L)	10/31	BRIAN BRADBURY	4	ICP/0700	ICP/2000	
ENG4 454 WIL MFRD (L/L)	10/31	JOHN CAROON	4	ICP/0700	ICP/2000	
8. Division/Group Communication Summary						
Function	Channel	RX Frequency N/W	RX Tone/NAC	TX Frequency N/W	TX Tone/NAC	Mode
COMMAND	2	170.6875 N	136.5	166.5750 N	136.5	A
TACTICAL	12	171.1125 N	136.5	171.1125 N	136.5	A
AIR TO GROUND	13	168.3375 N		168.3375 N		A
AIR TO GROUND	14	169.4625 N		169.4625 N		A
9. Prepared By (Resource Unit Leader)		Approved By (Planning Section Chief)		Date	Time	
TERI PARVIN		JILL JOHNSON		10/15/2022	2000	

Division/Group Assignment List (ICS 204 WF)
Controlled Unclassified Information//Basic

1. Incident Name:				3.		
CEDAR CREEK				Branch:	Division/Group S	
2. Operational Period:						
Date/Time From: 10/16/2022 0700 SUN		Date/Time To: 10/16/2022 2000 SUN				
4. Operations Personnel						
FIELD OPERATIONS		AARON ROWE MIKE DAVIS (T)		DIVISION/GROUP SUPERVISOR		JASON EMHOFF DON GALLAGHER (T)
AIR OPERATIONS BRANCH DIRECTOR		PAUL BALFOUR		SAFETY OFFICER		TROY CORN JACK CATES; PHIL GRAHAM (T)
5. Resources Assigned this Period						
Strike Team / Task Force / Resource Designator		LWD	Leader	Number Persons	Drop Off PT./Time	Pick Up PT./Time
E-5109 WTS2 WILLOW CANYON TRUCKING		10/21	JOHN BARRETT	1	ICP/0700	ICP/2000
E-5231 WTS2 TABLE MOUNTAIN		10/24	TOM WHITING	1	ICP/0700	ICP/2000
E-5520 WTS2 MILLER TIMBER		10/21	WAYNE ENGESETH	1	ICP/0700	ICP/2000
E-606 DZR2 BARRY BROWN INC		10/23	BARRY BROWN	2	ICP/0700	ICP/2000
E-5019 FEL1 TJS CUTTING		10/17	AUSTIN SEEKINS	2	ICP/0700	ICP/2000
E-5238 SMM3 HACKER MACHINES		10/17	CHRIS HACKER	2	ICP/0700	ICP/2000
O-1103 REAF		10/25	MARK RICHARDSON	1	ICP/0700	ICP/2000
O-1146 LINE MEDIC LUER		10/26	JOE LUER	1	ICP/0700	ICP/2000
S-1334 MEDIC 35		10/17	SAVION SOLEIL	2	ICP/0700	ICP/2000
E-257 AMBULANCE 3		10/17	AYALA RAHM	2	ICP/0700	ICP/2000
6. Control Operations/Work Assignments:						
<p>Task: Patrol the 5883 road east of DP88 to DP105. Continue to hold and secure control lines on spot fires.</p> <p>Purpose: To protect values at risk in the community of Oakridge and the Hwy 58 corridor.</p> <p>End State: Keep fire north of Hwy 58, east of Mount David Douglas, and west of Fuji Mountain.</p>						
7. Special Instructions:						
<ul style="list-style-type: none"> • Be IA ready. • Areas to be avoided are marked with either black/yellow or red dot on white flagging. • Consult Resource Advisors if you have any questions. • Backhaul all excess equipment. 						
8. Division/Group Communication Summary						
Function	Channel	RX Frequency N/W	RX Tone/NAC	TX Frequency N/W	TX Tone/NAC	Mode
COMMAND	2	170.6875 N	136.5	166.5750 N	136.5	A
TACTICAL	12	171.1125 N	136.5	171.1125 N	136.5	A
AIR TO GROUND	13	168.3375 N		168.3375 N		A
AIR TO GROUND	14	169.4625 N		169.4625 N		A
9. Prepared By (Resource Unit Leader)			Approved By (Planning Section Chief)		Date	Time
TERI PARVIN			JILL JOHNSON		10/15/2022	2000

Division/Group Assignment List (ICS 204 WF)
Controlled Unclassified Information//Basic

1. Incident Name:				3.		
CEDAR CREEK				Branch:	Division/Group T	
2. Operational Period:						
Date/Time From: 10/16/2022 0700 SUN		Date/Time To: 10/16/2022 2000 SUN				
4. Operations Personnel						
FIELD OPERATIONS		AARON ROWE MIKE DAVIS (T)		DIVISION/GROUP SUPERVISOR		SAM STEINSHOUER
AIR OPERATIONS BRANCH DIRECTOR		PAUL BALFOUR		SAFETY OFFICER		TROY CORN JACK CATES; PHIL GRAHAM (T)
5. Resources Assigned this Period						
Strike Team / Task Force / Resource Designator		LWD	Leader	Number Persons	Drop Off PT./Time	Pick Up PT./Time
O-1055 SOF2		10/19	MITCH WILSON	1	ICP/0700	ICP/2000
C-123.4 TFLD (T)		10/20	JASON BATES	1	ICP/0700	ICP/2000
C-126.3 TFLD		10/22	MATT CLEMINS	1	ICP/0700	ICP/2000
C-126.5 STEQ		10/22	ANDRES MORENO	1	ICP/0700	ICP/2000
O-1086 STEN		10/22	ERIC KIEHN	1	ICP/0700	ICP/2000
C-123.6 HEQB		10/19	MARCUS SARTIN	1	ICP/0700	ICP/2000
C-126.4 HEQB		10/22	SAMUAL DUTTON	1	ICP/0700	ICP/2000
O-1022 HEQB		10/19	KYLE CRANMER	1	ICP/0700	ICP/2000
O-1029 HEQB (T)		10/17	ETHAN CAMARENA	1	ICP/0700	ICP/2000
O-1077 FELB		10/22	MIKE HENDERSON	1	ICP/0700	ICP/2000
O-1046 FMOD PACIFIC RIDGELINE		10/18	ADAM MILLER	2	ICP/0700	ICP/2000
O-5057 FMOD TIMBER TIPPER		10/19	GERALD FLOYD	2	ICP/0700	ICP/2000
C-123 CRW1 PLUMAS IHC		10/19	MIKE SHERMAN	17	ICP/0700	ICP/2000
C-126 CRW1 FEATHER RIVER IHC		10/22	MATT CLEMINS	20	ICP/0700	ICP/2000
C-122 CR2I SRV #12		10/22	JULIAN I JACOBO	21	ICP/0700	ICP/2000
C-127 CR2I PATRICK ENV		10/21	DUSTIN DUFFY	20	ICP/0700	ICP/2000
C-134 CR2I GRAYBACK FORESTRY NCC 16A		10/25	CHRIS UNIACK	20	ICP/0700	ICP/2000
8. Division/Group Communication Summary						
Function	Channel	RX Frequency N/W	RX Tone/NAC	TX Frequency N/W	TX Tone/NAC	Mode
COMMAND	2	170.6875 N	136.5	166.5750 N	136.5	A
COMMAND	3	171.0625 N	136.5	162.8125 N	136.5	A
TACTICAL	9	166.7250 N	136.5	166.7250 N	136.5	A
AIR TO GROUND	13	168.3375 N		168.3375 N		A
AIR TO GROUND	14	169.4625 N		169.4625 N		A
9. Prepared By (Resource Unit Leader)			Approved By (Planning Section Chief)		Date	Time
TERI PARVIN			JILL JOHNSON		10/15/2022	2000

Division/Group Assignment List (ICS 204 WF)
Controlled Unclassified Information//Basic

1. Incident Name:				3.		
CEDAR CREEK				Branch:	Division/Group T	
2. Operational Period:						
Date/Time From: 10/16/2022 0700 SUN		Date/Time To: 10/16/2022 2000 SUN				
4. Operations Personnel						
FIELD OPERATIONS		AARON ROWE MIKE DAVIS (T)		DIVISION/GROUP SUPERVISOR		SAM STEINSHOUER
AIR OPERATIONS BRANCH DIRECTOR		PAUL BALFOUR		SAFETY OFFICER		TROY CORN JACK CATES; PHIL GRAHAM (T)
5. Resources Assigned this Period						
Strike Team / Task Force / Resource Designator		LWD	Leader	Number Persons	Drop Off PT./Time	Pick Up PT./Time
E-573 ENG3 CA-CNF E328		10/20	ARTHUR BUONAURO	5	ICP/0700	ICP/2000
E-588 ENG6 MILLER TIMBER		10/22	STEVE ROBERTSON	3	ICP/0700	ICP/2000
E-591 ENG6 C & K WILDLAND FIRE		10/21	MICHAEL MCCURRY	3	ICP/0700	ICP/2000
E-553 WTT2 COASTAL RANGE FIRE SUPPORT		10/26	SEAN BOEHLJE	1	ICP/0700	ICP/2000
E-159 WTT2 BELLOIR & SONS		11/03	ROSS BELLOIR	1	ICP/0700	ICP/2000
E-5518 WTS2 R25 ENTERPRISES		10/23	RON HAGENAUER	1	ICP/0700	ICP/2000
E-586 DOZ3 ROBERT MURRAY		10/21	KENNY MURRAY	2	ICP/0700	ICP/2000
E-607 DZR2 MILLER TIMBER SERVICES		10/25	DUSTIN FORTADO	2	ICP/0700	ICP/2000
E-5462 SMM1 BRINK BROTHERS INC.		10/25	MATT SAYLES	1	ICP/0700	ICP/2000
E-608 SKG1 MILLER TIMBER SERVICES		10/24	MARK BOND	1	ICP/0700	ICP/2000
E-609 SKG2 OUTBACK WILDFIRE		10/25	TODD HALEY	2	ICP/0700	ICP/2000
E-610 SKG1 MILLER TIMBER SERVICES		10/25	SCOTT KELLOGG	2	ICP/0700	ICP/2000
E-570 SKD2 BREEZE BY FIRE		10/17	CALEB JOCK	2	ICP/0700	ICP/2000
E-5078 SKD2 RIM ROCK		10/26	MATTHEW PAINTER	2	ICP/0700	ICP/2000
E-5079 SKD2 STATEWIDE CONTRACT SERV		10/24	RYAN STEPP	1	ICP/0700	ICP/2000
8. Division/Group Communication Summary						
Function	Channel	RX Frequency N/W	RX Tone/NAC	TX Frequency N/W	TX Tone/NAC	Mode
COMMAND	2	170.6875 N	136.5	166.5750 N	136.5	A
COMMAND	3	171.0625 N	136.5	162.8125 N	136.5	A
TACTICAL	9	166.7250 N	136.5	166.7250 N	136.5	A
AIR TO GROUND	13	168.3375 N		168.3375 N		A
AIR TO GROUND	14	169.4625 N		169.4625 N		A
9. Prepared By (Resource Unit Leader)			Approved By (Planning Section Chief)		Date	Time
TERI PARVIN			JILL JOHNSON		10/15/2022	2000

Division/Group Assignment List (ICS 204 WF)
Controlled Unclassified Information//Basic

1. Incident Name:				3.		
CEDAR CREEK				Branch:	Division/Group T	
2. Operational Period:						
Date/Time From: 10/16/2022 0700 SUN		Date/Time To: 10/16/2022 2000 SUN				
4. Operations Personnel						
FIELD OPERATIONS	AARON ROWE MIKE DAVIS (T)			DIVISION/GROUP SUPERVISOR	SAM STEINSHOUER	
AIR OPERATIONS BRANCH DIRECTOR	PAUL BALFOUR			SAFETY OFFICER	TROY CORN JACK CATES; PHIL GRAHAM (T)	
5. Resources Assigned this Period						
Strike Team / Task Force / Resource Designator	LWD	Leader	Number Persons	Drop Off PT./Time	Pick Up PT./Time	
E-355 FEL1 DUKE	10/25	JUSTIN DARSTIN	2	ICP/0700	ICP/2000	
O-267 REAF (T)	10/24	BRESA MARTIN	1	ICP/0700	ICP/2000	
O-1132 ARCH	10/25	MOLLY RAY	1	ICP/0700	ICP/2000	
O-1173 LINE MEDIC RICHMOND	10/27	TIM RICHMOND	1	ICP/0700	ICP/2000	
O-1172 LINE MEDIC MEADE	10/27	KILE MEADE	1	ICP/0700	ICP/2000	
E-257 AMBULANCE 3	10/17	AYALA RAHM	2	ICP/0700	ICP/2000	
6. Control Operations/Work Assignments:						
Task: Patrol the 5883 road west of DP88 to Hwy 58. Hold and secure control lines on spot fires and slopovers in Eagle Creek drainage.						
Purpose: To protect values at risk in the community of Oakridge and the Hwy 58 corridor.						
End State: Keep fire north of Hwy 58, east of Mount David Douglas, and west of Fuji Mountain.						
7. Special Instructions:						
<ul style="list-style-type: none"> • Be IA ready - See IA Communication Plan for Initial Attack. • Areas to be avoided are marked with either black/yellow or red dot on white flagging. • Consult Resource Advisors if you have any questions. • Backhaul all excess equipment. 						
8. Division/Group Communication Summary						
Function	Channel	RX Frequency N/W	RX Tone/NAC	TX Frequency N/W	TX Tone/NAC	Mode
COMMAND	2	170.6875 N	136.5	166.5750 N	136.5	A
COMMAND	3	171.0625 N	136.5	162.8125 N	136.5	A
TACTICAL	9	166.7250 N	136.5	166.7250 N	136.5	A
AIR TO GROUND	13	168.3375 N		168.3375 N		A
AIR TO GROUND	14	169.4625 N		169.4625 N		A
9. Prepared By (Resource Unit Leader)			Approved By (Planning Section Chief)		Date	Time
TERI PARVIN			JILL JOHNSON		10/15/2022	2000

Division/Group Assignment List (ICS 204 WF)
Controlled Unclassified Information//Basic

1. Incident Name:				3.			
CEDAR CREEK				Branch:		Division/Group	
2. Operational Period:				W / X			
Date/Time From: 10/16/2022 0700 SUN		Date/Time To: 10/16/2022 2000 SUN					
4. Operations Personnel							
FIELD OPERATIONS		AARON ROWE MIKE DAVIS (T)		DIVISION/GROUP SUPERVISOR		ROBERT HINDS	
AIR OPERATIONS BRANCH DIRECTOR		PAUL BALFOUR		SAFETY OFFICER		TROY CORN JACK CATES; PHIL GRAHAM (T)	
5. Resources Assigned this Period							
Strike Team / Task Force / Resource Designator		LWD	Leader	Number Persons	Drop Off PT./Time	Pick Up PT./Time	
O-1054 SOF2		10/21	PAUL BRNA	1	ICP/0700	ICP/2000	
O-905 TFLD		10/21	TED PIEHL	1	ICP/0700	ICP/2000	
O-1021 TFLD		10/18	COLIN GUNDLE	1	ICP/0700	ICP/2000	
O-1036 TFLD (T)		10/18	MICHAEL GREGORY	1	ICP/0700	ICP/2000	
O-982 HEQB		10/18	TOBY BAKOS	1	ICP/0700	ICP/2000	
O-1006 HEQB (T)		10/21	DAN O'NEAL	1	ICP/0700	ICP/2000	
O-1038 FELB (T)		10/24	STUART SMITH-BLOCKLEY	1	ICP/0700	ICP/2000	
O-841 FMOD TIMBER TIPPER		10/30	MATT WINSLOW	2	ICP/0700	ICP/2000	
C-133 CR2I NORTH PACIFIC		10/25	ALEX GALICIA	20	ICP/0700	ICP/2000	
E-566 ENG6 NORTH PACIFIC FORESTRY		10/17	COLLIN FICCADENTI	3	ICP/0700	ICP/2000	
E-568 ENG6 FIRST STRIKE #19		10/16	GERALD COATS	3	ICP/0700	ICP/2000	
E-575 ENG6 J.C. OROZCO		10/19	SCOTT HANEY	3	ICP/0700	ICP/2000	
E-576 ENG6 J.C. OROZCO		10/19	JAVIER OROZCO	3	ICP/0700	ICP/2000	
E-594 ENG3 OUTBACK FIREFIGHTING		10/23	CHUCK MCCONNELL	3	ICP/0700	ICP/2000	
E-559 EXC3 OWENS FREIGHT LINES		10/28	DOUG JONES	2	ICP/0700	ICP/2000	
E-571 EXC3 MARK JONES TRUCKING		10/18	CHAD BROWN	2	ICP/0700	ICP/2000	
8. Division/Group Communication Summary							
Function	Channel	RX Frequency N/W	RX Tone/NAC	TX Frequency N/W	TX Tone/NAC	Mode	
COMMAND	1	170.0000 N	136.5	166.6750 N	136.5	A	
COMMAND	2	170.6875 N	136.5	166.5750 N	136.5	A	
TACTICAL	11	168.2500 N	136.5	168.2500 N	136.5	A	
AIR TO GROUND	13	168.3375 N		168.3375 N		A	
AIR TO GROUND	14	169.4625 N		169.4625 N		A	
9. Prepared By (Resource Unit Leader)			Approved By (Planning Section Chief)			Date	Time
TERI PARVIN			JILL JOHNSON			10/15/2022	2000

Division/Group Assignment List (ICS 204 WF)
Controlled Unclassified Information//Basic

1. Incident Name:			3.			
CEDAR CREEK			Branch:		Division/Group	
2. Operational Period:			W / X			
Date/Time From: 10/16/2022 0700	SUN	Date/Time To: 10/16/2022 2000				
4. Operations Personnel						
FIELD OPERATIONS		AARON ROWE MIKE DAVIS (T)		DIVISION/GROUP SUPERVISOR		ROBERT HINDS
AIR OPERATIONS BRANCH DIRECTOR		PAUL BALFOUR		SAFETY OFFICER		TROY CORN JACK CATES; PHIL GRAHAM (T)
5. Resources Assigned this Period						
Strike Team / Task Force / Resource Designator		LWD	Leader	Number Persons	Drop Off PT./Time	Pick Up PT./Time
E-580 EXC3 OWENS FREIGHT LINES		10/21	RANDY HUSTED	2	ICP/0700	ICP/2000
E-5529 EXC3 RUNDELL		10/21	MIKE RUNDELL	2	ICP/0700	ICP/2000
E-321 CHSL ATLAS		10/16	JILLIAN FALGE	2	ICP/0700	ICP/2000
O-1025 REAF		10/17	ADAM BUCHER	1	ICP/0700	ICP/2000
O-1060 REAF (T)		10/16	MARK LEHNER	1	ICP/0700	ICP/2000
O-1080 REAF		10/24	RYAN MURDOFF	1	ICP/0700	ICP/2000
O-1144 LINE MEDIC NEEL		10/26	SAMUEL NEEL	1	ICP/0700	ICP/2000
S-279 REMS 1		10/29	SHAWN BRODZIK	4	ICP/0700	ICP/2000
6. Control Operations/Work Assignments:						
<p>Task: Patrol and secure the 352 and 353 roads. Hold and secure control line along the 5871 Rd. Purpose: To protect values at risk in community of Oakridge and the Hwy 58 corridor. End State: Keep fire north of railroad and the 352 and 353 roads and north and east of the 5871 Rd</p>						
7. Special Instructions:						
<ul style="list-style-type: none"> • Be IA ready - See IA Communication Plan for Initial Attack. • Areas to be avoided are marked with either black/yellow or red dot on white flagging. • Consult Resource Advisors if you have any questions. • Backhaul all excess equipment. 						
8. Division/Group Communication Summary						
Function	Channel	RX Frequency N/W	RX Tone/NAC	TX Frequency N/W	TX Tone/NAC	Mode
COMMAND	1	170.0000 N	136.5	166.6750 N	136.5	A
COMMAND	2	170.6875 N	136.5	166.5750 N	136.5	A
TACTICAL	11	168.2500 N	136.5	168.2500 N	136.5	A
AIR TO GROUND	13	168.3375 N		168.3375 N		A
AIR TO GROUND	14	169.4625 N		169.4625 N		A
9. Prepared By (Resource Unit Leader)			Approved By (Planning Section Chief)		Date	Time
TERI PARVIN			JILL JOHNSON		10/15/2022	2000

Division/Group Assignment List (ICS 204 WF)
Controlled Unclassified Information//Basic

1. Incident Name:			3.			
CEDAR CREEK			Branch:		Division/Group	
2. Operational Period:			POTTER-SWAMP			
Date/Time From: 10/16/2022 0700 SUN		Date/Time To: 10/16/2022 2000 SUN				
4. Operations Personnel						
FIELD OPERATIONS		AARON ROWE MIKE DAVIS (T)		DIVISION/GROUP SUPERVISOR		QUINLAN ANDERSON MATT PEDERSON (T)
AIR OPERATIONS BRANCH DIRECTOR		PAUL BALFOUR		SAFETY OFFICER		TROY CORN JACK CATES; PHIL GRAHAM (T)
5. Resources Assigned this Period						
Strike Team / Task Force / Resource Designator		LWD	Leader	Number Persons	Drop Off PT./Time	Pick Up PT./Time
HEQB (L/L)			JAIME MARISCAL	1	ICP/0700	ICP/2000
HEQB (T) (L/L)			ADAM VROON	1	ICP/0700	ICP/2000
E-561 EXC2 JERRY SWEARINGEN CONSTR		10/17	JERRY SWEARINGEN	2	ICP/0700	ICP/2000
E-582 EXC2 ROBERT MURRAY		10/21	CHARLOTTE KAME	1	ICP/0700	ICP/2000
E-581 EXC3 HUGHES, PATRICK		10/21	PATRICK HUGHES	2	ICP/0700	ICP/2000
E-563 DUMP LEE ROY BELLOIR & SONS		10/17	DARREN BELLOIR	1	ICP/0700	ICP/2000
E-176 AMBULANCE 2		10/24	JARED GRISSOM	2	ICP/0700	ICP/2000
6. Control Operations/Work Assignments:						
Task: Continue suppression repair on Potter incident.						
Purpose: Maintain the integrity of infrastructure and protect natural resources.						
End State: Return roads and suppression control features to pre-fire conditions per the Willamette NF suppression repair guidelines.						
7. Special Instructions:						
8. Division/Group Communication Summary						
Function	Channel	RX Frequency N/W	RX Tone/NAC	TX Frequency N/W	TX Tone/NAC	Mode
COMMAND	7	170.4625 N	103.5	164.8250 N	103.5	A
TACTICAL	11	168.2500 N	136.5	168.2500 N	136.5	A
AIR TO GROUND	13	168.3375 N		168.3375 N		A
AIR TO GROUND	14	169.4625 N		169.4625 N		A
9. Prepared By (Resource Unit Leader)			Approved By (Planning Section Chief)		Date	Time
TERI PARVIN			JILL JOHNSON		10/15/2022	2000

Controlled Unclassified Information/Basic

AIR OPERATIONS SUMMARY CEDAR CREEK	Prepared By: Paul Balfour AOB	Prepared: 10/15/2022	Prepared Time: 1800 hrs.		
	2. OPERATIONAL PERIOD 10/16/2022	START TIME: 0700	END TIME: 1800	SUNRISE: 0724	SUNSET: 1826

<p>HIGH, SHIFTING, ERRATIC WINDS WILL AFFECT AIRCRAFT PERFORMANCE AND AVAILABILITY.</p> <p>TRACK WATER SOURCE USE ON COST SUMMARIES FOR EACH HELICOPTER.</p> <p>*LEND/LEASE TO NEW IA OUTSIDE THE DELEGATION *</p> <p>REQUEST FOR AERIAL DELIVERY OF LINE ORDERS THROUGH <u>COMMUNICATIONS</u>.</p> <p>REQUEST FOR AA OR HELICOPTERS THROUGH <u>HELIBASE ON COMMAND</u></p> <p>SCHEDULE FLIGHTS AT EARLIEST POSSIBLE TIME THROUGH 503-551-3973</p>	<p>4. MEDICAL A/C:</p> <p>Short Haul Helicopter Located KAPKA HB</p> <p>Follow IWI protocols in case of an emergency.</p>	<p>TFR 2/2874 (A-164) Good Thru Nov 1st</p> <p>Freq. 126.5250</p> <p>Ceiling 11,000 MSL</p> <p>0700-2400</p> <p>[Check FAA Website for Updates]</p>
--	--	---

6. PERSONNEL	NAME	PHONE #	7. FREQUENCIES	AM	FM	8. FIXED-WING Avail/ Type/ Make-Model/ N#/ Base
AOBD	Paul Balfour	509-993-8739	A/A TFR	126.5250		ATGS Platforms: Available as needed from Pool Airtankers: Order thru ATGS UAS – UR-31/32 (A-171) Robert Ordonez LEAD 907-370-9259 Crescent Airport (5S2) Elevation 4819' 43 ° 31.967402N 121 ° 57.015535W AIS Hotsy at helibase for bucket/tank rinsing Email addresses: Finance: 2022.cedarcreek.finance@firenet.gov Helibase: 2022.cedarcreek.helibase@gmail.com KAPKA HELIBASE: 43 58.83N 121 36.59W EL 5920'
ASGS	Albert Faria	907-419-5415	A/A (Briefing) A-28	132.4750		
ASGS(t)	Dan Sebern	970-210-1798	A/A (Rotor Wing) A-53	120.0250		
ATGS (Pool)	Amanda Hickman	541-892-0854				
ATGS (Pool)	Justin Wood	541-420-2890	A/G West Primary A- 29		168.3375	
HEBM	Steve Spellberg	781-789-1561	A/G West Secondary A-30		169.4625	
			A/G West Firing A-65		171.8375	
Kapka Helibase		503-551-3973				
UAO NW OR	Justin Vernon	541-224-3627				
UAO Central OR	Jessica Sherwood	458-218-2649				
Kapka Helibase	Primary Contact Number	503-551-3973	CTAF/UNICOM	122.9		
			DECK	163.100 (Tone) rx/tx	136.5	

FAA N#	TY	MAKE/ MODEL	BASE	START	AVAIL	REMARKS	FAA N#	TY	MAKE/ MODEL	BASE	START	AVAIL	REMARKS
N804PJ	1	UH-60	KAPKA	0700	0900	Bucket A-12	HT1048Y	1	S-61A	KAPKA	0700	0900	Heli Tank A-190
N635CK	1	S-61	KAPKA	0700	0900	Bucket A-188	N350HQ	3	AS 350 B3	KAPKA	0700	0900	Short Haul
N611CK	1	S-61	KAPKA	0700	0900	Bucket A-187	N854H	3	Bell 407	KAPKA	0700	0900	PSD/PAX/H2O A-162
N805RA	1	K-MAX	Cresent	0700	0900	Bucket A-197	N171PL	1	K-MAX	Cresent	0700	0900	Bucket A-35

INCIDENT RADIO COMMUNICATIONS PLAN (ICS 205)

Controlled Unclassified Information//Basic

1. Incident Name:	2. Date/Time Prepared:	3. Operational Period:	
CEDAR CREEK	Date: 10/15/2022 Time: 2000	Date/Time From: 10/16/2022 0700 SUN	Date/Time To: 10/16/2022 2000 SUN

4. Basic Radio Channel Use:

Zone Group	Ch #	Function	Channel Name/Trunked Radio System Talkgroup	Assignment	RX Freq	RX Tone/NAC	TX Freq	TX Tone/NAC	Mode (A,D, or M)	Remarks
	1	COMMAND	CMD 1	DIV A / X / Y	170.0000 N	136.5	166.6750 N	136.5	A	LOCATED - HUCKLEBERRY MTN
	2	COMMAND	CMD 2	DIV S / T / W / X	170.6875 N	136.5	166.5750 N	136.5	A	LOCATED - WOLF MT
	3	COMMAND	CMD 3	DIV R / T	171.0625 N	136.5	162.8125 N	136.5	A	LOCATED - THE TWINS
	4	COMMAND	CMD 4	DIV R	171.9000 N	136.5	165.9875 N	136.5	A	LOCATED - DAVIS MTN
	5	COMMAND	CMD 5	DIV P / R	170.0125 N	136.5	165.2500 N	136.5	A	LOCATED - CULTUS MTN
	6	COMMAND								
	7	COMMAND	HUCKLEBERRY	WIF FOREST NET	170.4625 N	103.5	164.8250 N	103.5	A	POTTER/BIG SWAMP FIRES
	8	TACTICAL	TAC 8	DIV P / R	168.6000 N	136.5	168.6000 N	136.5	A	
	9	TACTICAL	TAC 9	DIV T	166.7250 N	136.5	166.7250 N	136.5	A	
	10	TACTICAL	TAC 10	DIV A / Y	166.7750 N	136.5	166.7750 N	136.5	A	
	11	TACTICAL	TAC 11	DIV W/X / POTTER; BIG SWAMP	168.2500 N	136.5	168.2500 N	136.5	A	
	12	TACTICAL	TAC 12	DIV S	171.1125 N	136.5	171.1125 N	136.5	A	SHARED TACTICAL
	13	AIR TO GROUND	A/G PRI	AIR TO GROUND PRIMARY	168.3375 N		168.3375 N		A	AIR OPS PRIMARY
	14	AIR TO GROUND	A/G SEC	AIR TO GROUND SECONDARY	169.4625 N		169.4625 N		A	AIR OPS SECONDARY
	15	AIR TO GROUND	VMED 29	EMERGENCY USE	155.3475 N		155.3475 N	156.7	A	STATE INTEROP FOR MED FLIGHTS
	16	AIR GUARD	AIRGUARD	AIR GUARD	168.6250 N		168.6250 N	110.9	A	EMERGENCY AIR CONTACT

5. Special Instructions: COMMUNICATION PHONE: **(208) 891-8093** 24-Hours

6. Prepared By	(Communications Unit Leader)	Name: MISSY PARKER	Signature:
			<i>Missy Parker</i>
ICS 205	IAP Page	Date/Time: 10/15/2022 2000	

Controlled Unclassified Information//Basic

INCIDENT RADIO COMMUNICATIONS PLAN (ICS 205)

Controlled Unclassified Information//Basic

1. Incident Name:	2. Date/Time Prepared:	3. Operational Period:	
CEDAR CREEK - IA	Date: 10/15/2022 Time: 2000	Date/Time From: 10/16/2022 0700 SUN	Date/Time To: 10/16/2022 2000 SUN

4. Basic Radio Channel Use:										
Zone Group	Ch #	Function	Channel Name/Trunked Radio System Talkgroup	Assignment	RX Freq	RX Tone/NAC	TX Freq	TX Tone/NAC	Mode (A,D, or M)	Remarks
	1	COMMAND	DEF OD	SOUTHEAST	171.2625 N	103.5	164.1875 N	146.2	A	DESCHUTES ODELL
	2	COMMAND	HUCKLEBERRY	NORTHWEST	170.4625 N	103.5	164.8250 N	103.5	A	WIF FOREST NET
	3	COMMAND	WOLF	SOUTHWEST	170.4625 N	103.5	164.8250 N	192.8	A	WIF WOLF
	4	COMMAND	DEF LO C	NORTH CENTRAL	170.4750 N	103.5	163.1625 N	167.9	A	LOOKOUT CENTRAL/SOUTH
	6	TACTICAL	DEF TAC1	EAST	166.8875 N		166.8875 N		A	DESCHUTES FIRE TAC 1
	7	TACTICAL	DEF TAC2	EAST	167.6500 N		167.6500 N		A	DESCHUTES FIRE TAC 2
	8	TACTICAL	PROJ MDL	WEST TACTICAL PRIMARY	168.7750 N	103.5	168.7750 N	103.5	A	PROJECT MIDDLE FORK
	9	TACTICAL	PROJ MCK	WEST TACTICAL	168.7250 N	103.5	168.7250 N	103.5	A	PROJECT MCKENZIE
	10	TACTICAL	PROJ SRZ	WEST TACTICAL	166.5625 N	103.5	166.5625 N	103.5	A	SANTIAM RIVER PROJECT
	11	AIR TO GROUND	A/G 61	AIR TO GROUND EAST	169.2875 N		169.2875 N		A	INITIAL ATTACK AIR/GROUND PRIMARY EAST
	12	AIR TO GROUND	A/G 37	AIR TO GROUND WEST	167.3000 N		167.3000 N		A	INITIAL ATTACK AIR/GROUND SECONDARY EAST
	13	AIR TO GROUND	A/G 50	AIR TO GROUND PRI WEST	168.2875 N		168.2875 N		A	INITIAL ATTACK AIR/GROUND PRIMARY WEST
	14	AIR TO GROUND	A/G 09	AIR TO GROUND SEC WEST	166.9125 N		166.9125 N		A	INITIAL ATTACK AIR/GROUND SECONDARY WEST
	15	AIR TO GROUND	VMED 29	EMERGENCY USE	155.3475 N		155.3475 N	156.7	A	STATE INTEROP FOR MED FLIGHTS
	16	AIR GUARD	AIRGUARD	AIR GUARD	168.6250 N		168.6250 N	110.9	A	EMERGENCY AIR CONTACT

5. Special Instructions: COMMUNICATIONS Phone: 208-891-8093

6. Prepared By (Communications Unit Leader)	Name: PAUL NOA	Signature: <i>Paul Noa</i>
ICS 205	IAP Page	Date/Time: 10/15/2022 2000

Controlled Unclassified Information//Basic

Resource Advisor Message

Cedar Creek Fire

Mark Richardson, Lead READ, 412-618-7632, mark.richardson@usda.gov

Suppression Repair Standards

Waterbars

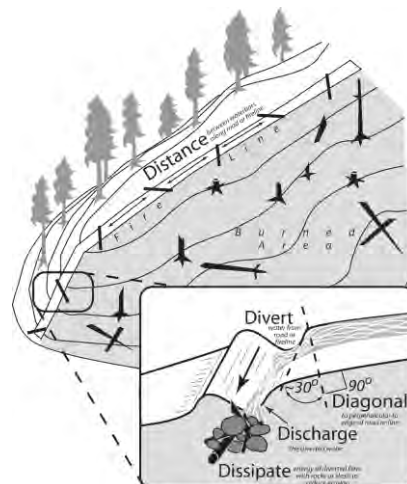
Height of water bar for handlines should average 6-12 inches. Height of machine-constructed water bars not to exceed 18 inches on slopes less than 40%. Height of machine-constructed water bars not to exceed 30 inches on slopes greater than 40%.

- Cut in the water bar – do not simply push up loose soil.
- Water bars should direct runoff away from the burned area where possible.
- Assure that the down slope end of the water bar is open and has adequate length to allow free flow of water off the fire line.
- Logs can be incorporated into water bars as long as they are embedded or anchored in a trench. Ensure fire end of log does not contact any organic material.
- Place slash below outlets of water bars to help slow runoff and collect sediment.

In selecting areas for establishing water bars the following should be considered:

- Locate bars at natural slope breaks. The idea is to move water off the fire line before it can build up enough energy to erode soil.
- When possible, locate bars where the outlet empties onto a resistant surface (i.e. rock or log debris).
- Locate bar outlets to provide maximum buffer distance to stream channel.
- Angle of water bars should be 20-45 degrees to the line.

Fire Line Slope %	Maximum Water Bar Spacing (feet)
2-5	300
6-10	200
11-15	150
16-20	100
21-35	75
36+	50



Dozer Line Repair

- Pull in berms and woody debris developed in construction of fireline. Distribute this material over the surface of the fire line, similar to the density of the surrounding area.
- Blockade lines at intersect with roads by placing logs and slash across the lines for 300 feet or site distance to minimize motorized use. Take extra care to return the entry points to a natural appearance that blends in with the surrounding landscape to the extent possible.
- At some line intersections with roads, it may be necessary to block access by constructing earthen berms and/or place boulders, heavy logs, slash, and other large vegetative material at the beginning of dozer line. These sites will be identified in Field Maps.
- Other blockage may be identified if lines exposed sensitive areas to future human intrusion.
- Lines requiring native seeding or weed-free mulching will **be identified in the Field Maps. If there isn't** enough debris to achieve 50% ground cover, REAFs may identify areas where weed free straw, or wood mulch is needed. Work with a resource advisor to implement seeding where necessary.

Chipping Standards

- Provide a 30- foot buffer of no chipping at water crossings or culverts.
- Do not place chips into road ditch.
- Do not chip onto a steep slope where chips will slide back into the ditch.
- Broadcast chipped material, ensuring that chips are no more than 4" deep.

640 Road: Cutting and Piling Specifications

- Within the wildlife habitat area: Load and transport piled log rounds from both sides of road and remove outside the core. Pile this material OUTSIDE the wildlife area at designated locations to be later burned following the specs below (NO burn piles within the wildlife habitat area).

Pile Specifications:

- Okay to fell a few trees <12" DBH within the current fuel break (West) side of road to accommodate the following burn pile specs, as coordinated with onsite READs.
- Min dimensions: 6 ft. W x 6 ft. H with brush and small debris at base;
- Max dimensions: Can NOT encroach into a 25 ft. buffer around adjacent leave trees;
- Chip and broadcast spray material on either side of the road but keep outside of any stream channels

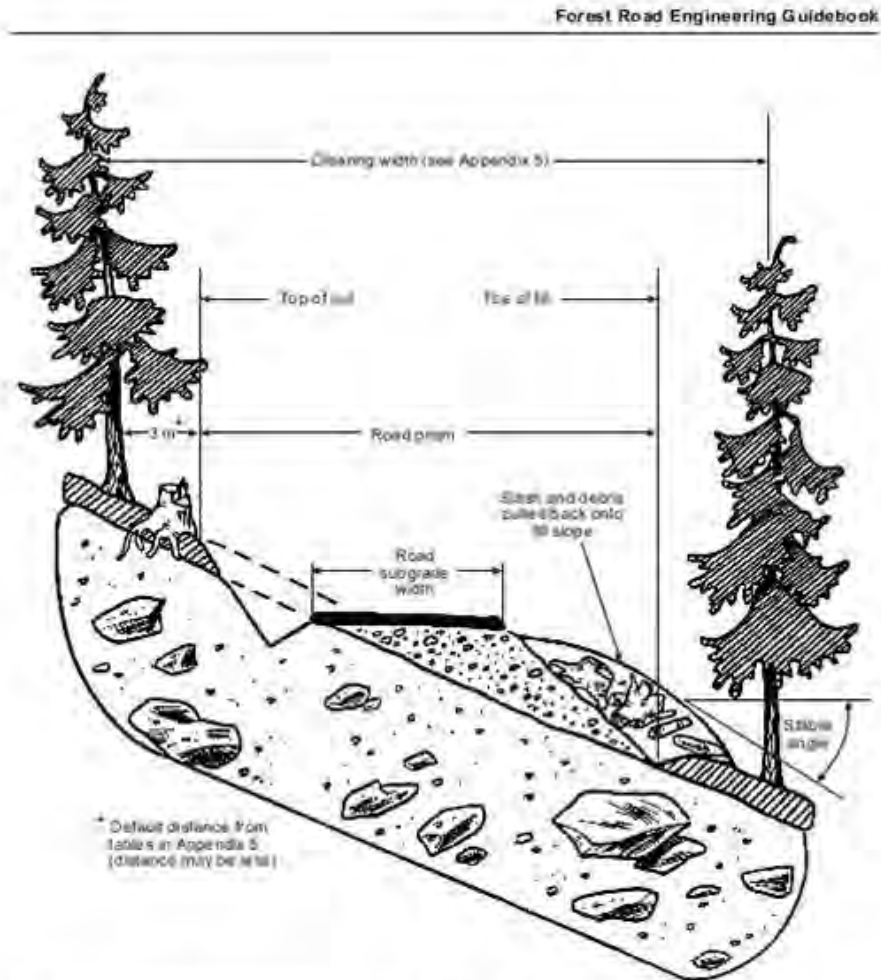


Figure 2. Typical roadway on moderate slopes with no additional clearing.

Please reach out to the REAF assigned to your division with any questions or concerns.

DEMOB INSTRUCTIONS

Cedar Creek, Junction Camp, Big Swamp & Potter

AIR TRAVEL – All resources requiring air travel to their home unit must call DEMOB 72 hours in advance of departure date to make travel arrangements.

DEMOB LOCATIONS: All demobs will occur at the resource current locations (Oakridge ICP or Junction Camp). Please follow the steps in this order.

1. **IAP:** Refer to the Tentative Demob list for your assigned Demob date/time.
2. **WEED WASH:** All OFF-ROAD resources need to complete a weed wash before leaving. Weed wash is located at Kokanee Staging near Oakridge ICP and Crescent Staging near Junction Camp.
3. **GROUND SUPPORT:** Equipment contractors need to pick up inspection forms at Ground Support. If damage or claims are reported an inspection may be performed. Ground Support will inform Demob when completed.
4. **COMMUNICATIONS AND SUPPLY:** Turn in all checked out items to the respective units. As items are returned, Demob will be notified.
5. **FINANCE:** Report to Finance and close out all final paperwork.
6. **DEMOB:** Once closed out in Finance, call Demob at 541-482-1331. If no answer, try again in a few minutes. If still no answer, then leave a message with the following information:
 - a. Your Resource Order Number
 - b. Name of Resource/Company
 - c. City/State you are traveling to
 - d. Estimate time of departure and arrival
 - i. Rest overnight (RON) location if applicable.

This is the last step before you start your travel.

Demob: 541-482-1331 2022.cedarcreek.demob@firenet.gov

Cedar Creek Fire

Tentative Demob List

Time	Sunday 10/16/2022		
600	C-125	ENTIAT IHC	CRW1
715	S-449	FIRELINE MEDIC 7	SMED
730	E-5163	PIERCE FIRE	WTT2
800	E-5371	HI COUNTRY	CHP2
	O-939	IMDT TEAM INCIDENT MED	FFT2
EOS	O-939.3	ONTKO, NECOLE	EMPF
	O-1011	MURPHY, RYAN	HMGB
	O-1018	COMBS, CHRISTINA	FFT2
	O-1019	MOORE, ALAYA	FFT2
	O-1083	SPELLBERG, STEVEN	HEBM
	O-1089	AYAYLA, ANNETTE	HMGB
	O-5360	GROVER, OLIVER	SEC1
	A-171.2	CEREMUGA, JOSEPH	UASP
	A-171.3	YUE, EDMOND	UASP

Time	Monday 10/17/22		
700	C-5034	PACIFIC OASIS 10	CRW2
730	E-517	MCCARLEY, MICHAEL	STMH
900	E-561	JERRY SWEARINGEN	EXC2
745	E-567	FIRST STRIKE	ENG6
800	E-568	FIRST STRIKE #19	ENG6
	E-5444	XTREME WILDLAND 41	WEED
	O-917.57	SIMLER, DOUGLAS	BCMG
	O-930	FRENCH, ARIEL DENNISE	RADO
	O-1001	MEDRANO, HECTOR	OSC2
	O-1034	FITZROY, JOHN	PIOF
	O-1040	AGUILERA, RAUL	ASGS
	O-1042	DAVALOS, ERIKA D	HMGB
	O-1060	LEHNER, MARK	REAF
	O-5382	MARTIN, NATHAN	BCMG
	O-5389	COLBY, DARIN	FSC3
	O-5401	ALLEN, LACIE RENEE	SEC2
	O-5411	DEVANE, EVAN	SEC2

Time	Tuesday 10/18/22		
730	E-72	WILDLAND FIRE SUPPORT	PUP1
800	E-563	LEE ROY BELLOIR & SONS	DUMP
815	E-564	RUSSEL MANAGEMENT	DUMP
700	E-566	NORTH PACIFIC FORESTRY	ENG6
900	E-570	BREEZE BY FIRE	SKD2
715	E-5115	EMERGENCY RESPONSE	AMB1
730	E-5465	AMERICAN MEDICAL	AMB2
	O-938	COWELL, BAILEY	RADO
EOS	O-982	BAKOS, TOBY	HEQB
	O-1025	BUCHER, ADAM	REAF
	O-1028	MAYNARD, DAVID	TFLD
	O-1029	CAMARENA, ETHAN	HEQB
	O-1032	CALLOW, BENJAMIN	COMT
	O-1033	DOHERTY, KIERIN PATRICK	COMT
EOS	O-5383	LIPP, KELSEY	BCMG
	S-1334	ALS 35 - BLACKWOODS	SMED

Note: If no time is listed, you are free to DMOB around the pre-scheduled times as sections are available. EOS = End of shift

CEDAR CREEK

TRAINING MESSAGE

Trainees:

If you have not already checked in with the Training Specialist, please do so via the QR code below:

[CEDAR CREEK TRAINEE CHECK IN](#)



If you have any questions, or need taskbook or performance evaluation forms, contact me in person at Junction Camp or by phone, text or email. **And don't forget to check out with me prior to demob.**

Training Assignment Tasks –

1. Ensure your trainer(s)/evaluator(s) has/have initialed completed tasks in your PTB,
2. Obtain an Incident Performance Rating,
3. Obtain an Evaluation Record,
4. If evaluator initialed #1 on your Evaluation Record, ensure he/she signs as final evaluator (located on the backside of your PTB cover page),
5. Email all documentation (including item #4), to Training Specialist, prior to demob
6. Complete Exit Interview (form will be provided via email).

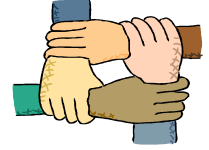
Training Specialist

Debra Packard, 559-623-2983

Email: debra_packard@firenet.gov

Your “I CAN” is more important than your IQ.

Human Resource Message



TEAMWORK



In the fall, when you see *Geese* heading south for the winter, flying along in "V" formation, you might consider what science has discovered as to why they fly that way. As each bird flaps its wings, it creates uplift for the bird immediately following.

By flying in "V" formation the whole flock adds at least 71% greater flying range than if each bird flew on its own. When a goose falls out of formation, it suddenly feels the drag and resistance of trying to go it alone and quickly gets back into formation to take advantage of the lifting power of the bird in front.

When the Head Goose gets tired, it rotates back in the wing and another goose flies point. *Geese* honk from behind to encourage those up front to keep up their speed.

Finally, when a goose gets sick, or is wounded by gunshots and falls out of formation, two other geese fall out with that goose and follow it down to lend help and protection. They stay with the fallen goose until it is able to fly, or until it dies. Only then do they launch out on their own, or with another formation to catch up with their group.

Human Resource Specialists

Susie Manezes, ICP
602-571-9327

Debra Packard, Junction Camp
559-623-2983

African Proverb: If you want to go fast, go alone. If you want to go far, go together.



Finance Message



Finance Email: 2022.cedarcreek.finance@firenet.gov

SUBJECT: Include Key Word **TIME** for Overhead, Crews & Cooperators

SUBJECT: Include Key Word **EQUIPMENT** for Contract Resources

OAKRIDGE FINANCE: 971-239-6880

Please Scan this QR code to send all required documents to finance or use the email below



FINANCE CHECK IN: 2022.cedarcreek.finance@firenet.gov

PLEASE ENSURE THE BELOW DOCUMENTS ARE EMAILED

Overhead, Crews & Cooperator Resources	Contract Resources
<ul style="list-style-type: none"> • Check-In: Crew Manifest, Cooperative Agreement (if applies), AD Hire Letter, Resource Order • Daily: Crew Time Report (CTR), Shift Tickets • Demob: Signed OF288, Final Equipment Use Invoice (Cooperator) If you don't have a way to sign you must come to finance. 	<ul style="list-style-type: none"> • Check-In: Resource Order, Contract/VIPR Agreement (make sure you have your UEI, Pre-Inspection • Daily: Shift Tickets, receipts (fuel issues, claims, etc.) • Demob: Contractor Evaluations, Final Shift Tickets and receipt(s) for Addition/Deductions, Post-Inspection, Final Signed Invoices If you don't have a way to sign you must come to finance

REMINDERS

- ★ PLEASE ENSURE YOU INCLUDE LOCATION OF WHERE YOU ARE WORKING (CEDAR CREEK DIVISION /POTTER) ON THE CTR OR SHIFT TICKET. MAKE SURE C OR E # IS ON THE CTR OR SHIFT TICKET
- ★ PLEASE SHOW YOUR LUNCH BREAK
- ★ PLEASE USE MILITARY TIME (0001-2400)
- ★ WHEN CLAIMING HAZARD PAY YOU MUST INCLUDE THE SUPPRESSION ACTION BEING PERFORMED. THIS INCLUDES OPERATIONS WHICH DIRECTLY SUPPORT CONTROL OF FIRE (E.G., ACTIVITIES TO EXTINGUISH THE FIRE, FIREFIGHTING, GROUND SCOUTING, SPOT FIRE PATROLLING, SEARCH AND RESCUE OPERATIONS, AND BACKFIRING).
- ★ WHEN SIGNING YOUR OF-288 or OF-286 PLEASE DO NOT LOCK IT or PROTECT THE SIGNATURE, WE HAVE TO BE ABLE TO SIGN IT AND SEND YOU A COPY

The following resources need to contact Finance

OAKRIDGE FINANCE: 971-239-6880

C-130	PRC #1		
C-134	GRAYBACK FORESTRY NCC 16A	E-5505	IDAHO WEST
C-5037	MR CONTRACTING CREW 1	E-5519	CLAY'S FAB & REPAIR
E-17	ROGUE RIVER FIRE, WATER	E-5529	RUNDELL
E-71	CLAYS FAB	O-841	TIMBER TIPPER
E-72	WILDLAND FIRE SUPPORT	O-900	STILL SMOKING, ALFRED
E-74	INBOUND	O-905	PIEHL, TED
E-99	AMR AMBULANCE 1	O-917.59	HENDRICKSON, ERIC
E-257	AMBULANCE 3	O-930	FRENCH, ARIEL DENNISE
E-321	ATLAS TREE SURGERY	O-942	HOOPER, ELIZABETH
E-383	ATLAS TREE SURGERY	O-954	KAUTT, JON
E-419	FINE SUZANNE	O-1014	FRANKS, ANNIE
E-487	ATLAS TREE SURGERY	O-1015	HASVOLD, THOMAS
E-554	PARAGON WATER TENDERS	O-1023	MORGAN, ROBERT W
E-559	OWENS FREIGHT LINES	O-1028	MAYNARD, DAVID
E-567	FIRST STRIKE	O-1029	CAMARENA, ETHAN
E-571	MARK JONES TRUCKING	O-1032	CALLOW, BENJAMIN
E-574	OR-MAF 44	O-1034	FITZROY, JOHN
E-576	J.C. OROZCO	O-1036	GREGORY, MICHAEL
E-580	OWENS FREIGHT LINES	O-1039	INCE-JOHANNSEN, SUNYA
E-581	HUGHES, PATRICK	O-1042	DAVALOS, ERIKA D
E-586	ROBERT MURRAY	O-1043	TURLEY, MARIANN
E-606	BARRY BROWN INC	O-1046	PACIFIC RIDGELINE
E-609	OUTBACK WILDFIRE	O-1054	BRNA, PAUL
E-610	MILLER TIMBER SERVICES	O-1055	WILSON, MITCH
E-618	SISTERS AGGREGATE & CONSTR	O-1056	SEXTON, JAMES
E-5007	PATRICK HUGHES TRUCKING	O-1059	BERNARDS, JASON
E-5019	TJS CUTTING	O-1060	LEHNER, MARK
E-5078	RIM ROCK	O-1065	HEFINGTON, KARIN NICOLE
E-5115	EMERGENCY RESPONSE LOGISTICS	O-1071	BARRY-GARLAND, ELI
E-5163	PIERCE FIRE	O-1072	PICKETT, MATHEW
E-5180	PARAGON WATER TENDERS LLC	O-1076	TIMBER TIPPER
E-5230	K & R CONTRACTING, LLC	O-1081	NOA, PAUL JOSEPH
E-5231	TABLE MOUNTAIN	O-1086	KIEHN, ERIC WILLIAM
E-5262	STORM SERVICES ENGINEERING	O-1091	NOTZ, JASON RICHARD
E-5293	ED STAUB & SONS PETROLEUM	O-1095	MORRIS, BILL
E-5376	TABLE MOUNTAIN FORESTRY	O-1103	RICHARDSON, MARK E
E-5406	CBC INVESTORS	O-1106	O'HARA, KATHRYN L
E-5462	BRINK BROTHERS INC.	O-1120	KESSI, HEATH B
O-1123	SEBERN, DANIEL		
O-1125	WILLIAMS, STEVE E		
O-1132	RAY, MOLLY A		

LOGISTICS (Hours of Operation & Information)**OAKRIDGE BASE CAMP**

Kitchen/Meals	0530 - 0900 1730 - 2030	Breakfast Dinner
Showers	0530 -1200 and 1430 - 2200	
Laundry	0500 - 1200 and 1700 - 2200	1.5 hour turn around

KOKANEE STAGING

Ground Support	0530 - 2100	
Mechanic	0600 - 2100	
Inspections	0530 - 2100	
Weed Wash	0700 - 2100	
Supply	0530 - 2100	Email to 2022.cedarcreek.supply@gmail.com
Ordering**	0600 - 2100	Email to 2022.cedarcreek.ordering@firenet.gov
Fuel	0600 - 1100 1300 - 1800 1830 - 2100	Please fill locally if you have capabilities **Note: Please don't mix any fuel until ready to use. If you do mix it, remember to label it with mix ratio.

JUNCTION CAMP

20111 Crescent Lake Hwy, Crescent OR 97733

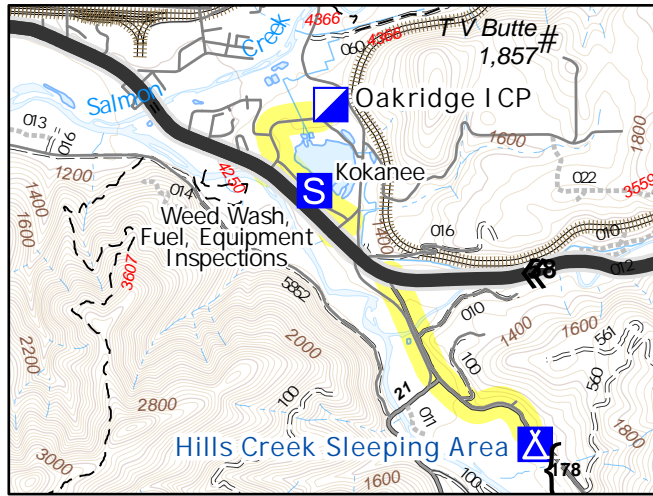
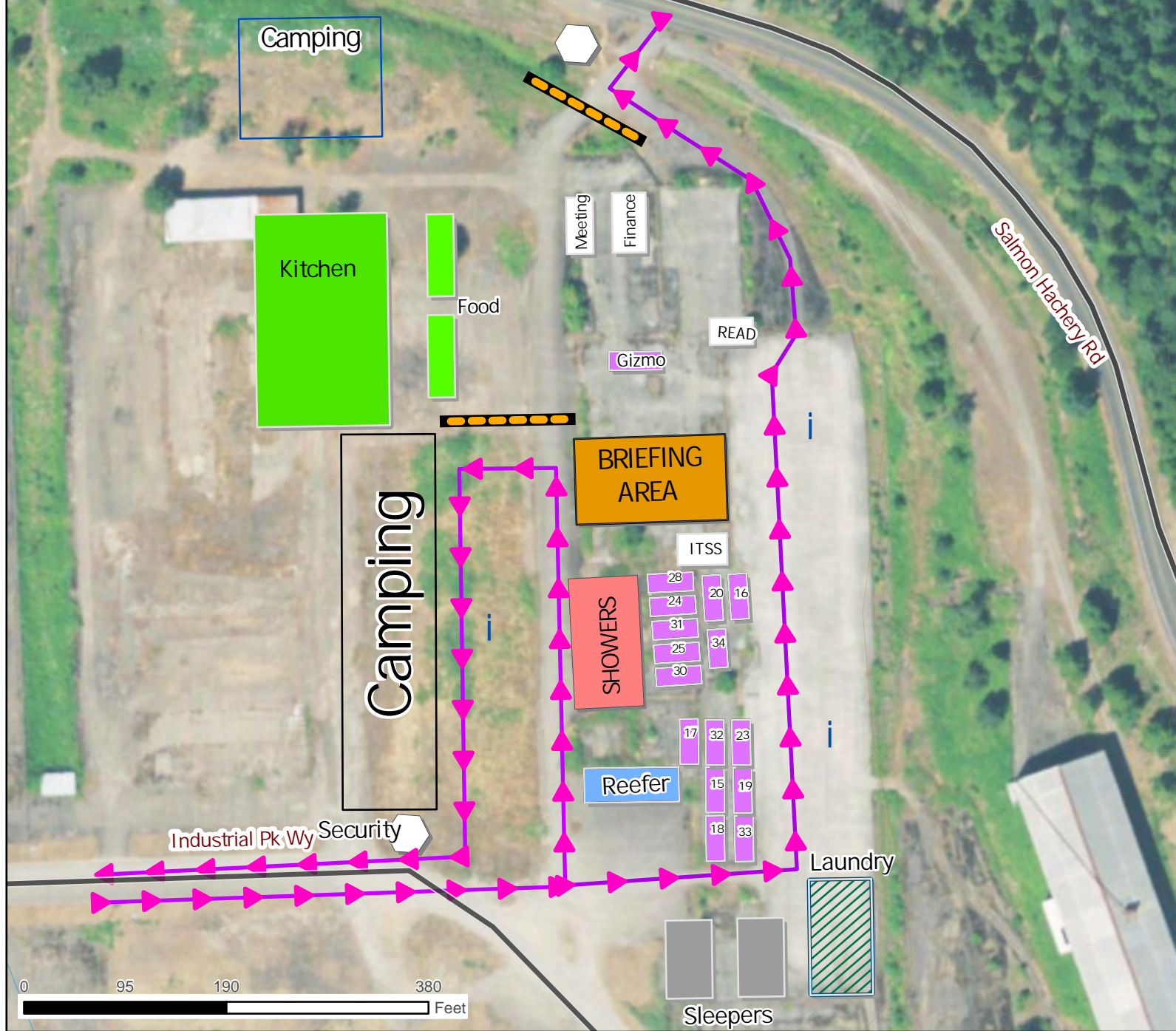
Kitchen/Meals	0615 - 0900 1830 - 2130	Breakfast Dinner
Showers	0600 - 1200 and 1400 - 2200	
Supply	0600 - 2130	

CRESCENT STAGING

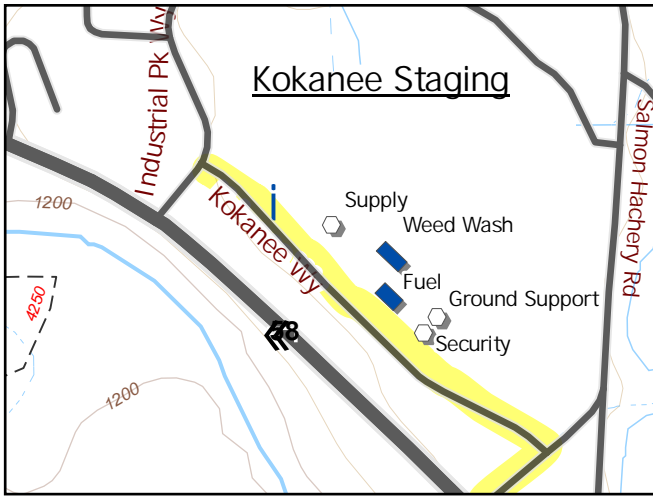
Ground Support	0530 - 2100	
Fuel	0600 - 1100, 1300 - 1800 1830 - 2100	
Weed Wash	0700 - 2100	

Ordering Instructions:

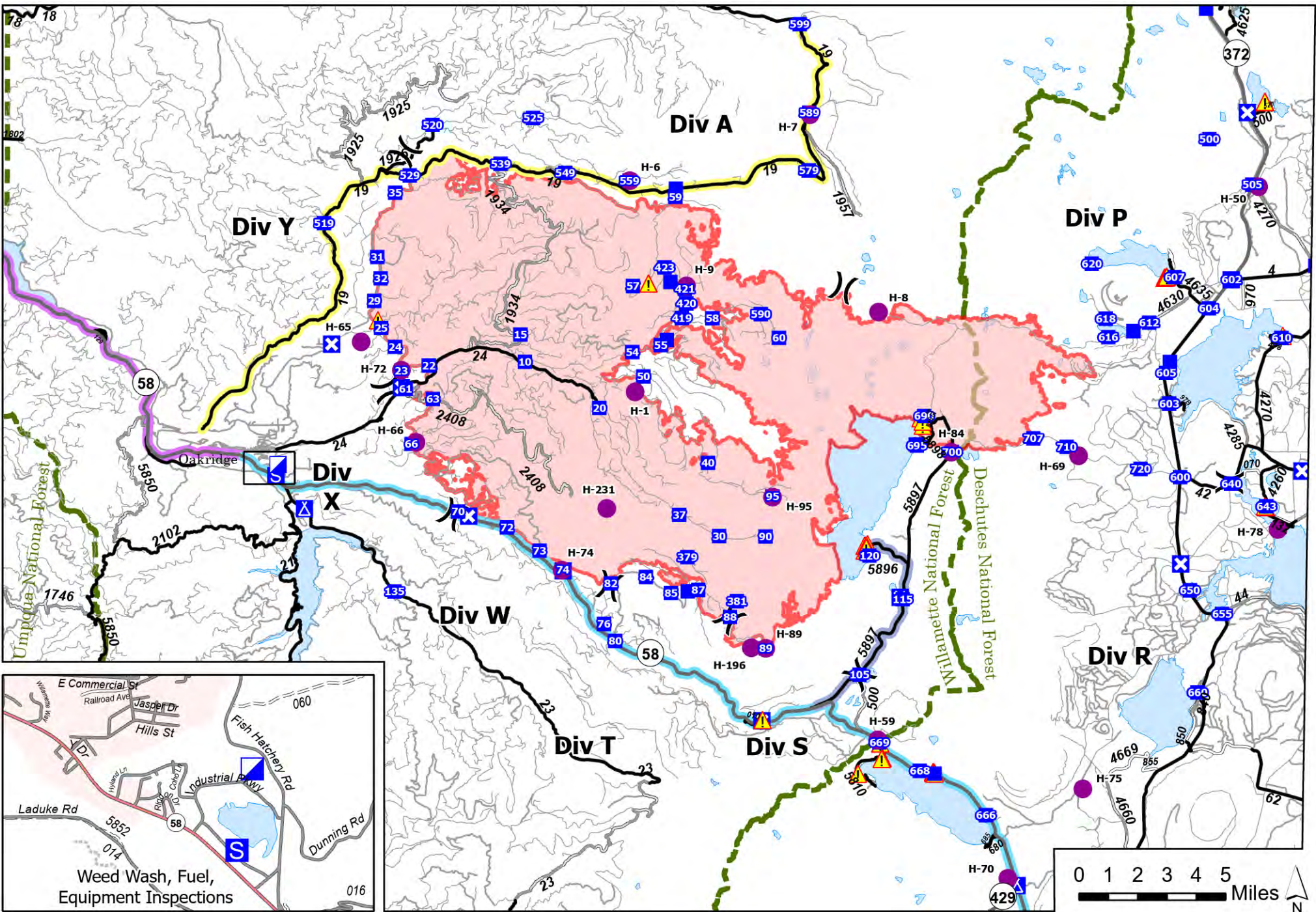
1. You must give a date and time needed with a minimum of 48 hours in the future, you can add in the comments "Or sooner if possible".
2. You must your put contact information on the 213.
3. Put both Ordering and Supply (in the "To" block) on your 213 so when it arrives at supply, so they know who to contact.
4. All orders must be approved and signed by Division or higher in Operations or Unit Leader or higher in other sections.



Trailers	Section
28	Operations
24 & 31	Medical
25 & 30	Comms
20	Safety
16	IC
34	Liason
17	PIO
32	Planning
15	HR
18	Facilities
23	GIS / Weather
19	Ordering / Food
33	Logistics



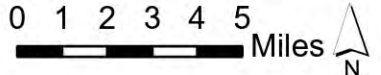
**Oakridge Facilities
Cedar Creek Fire
OR-WIF-220180**



Transportation

Cedar Creek
 OR-WIF-220180
 10/16/2022 24 Hour

- Helispot
- ⊗ Closure
- ⊠ Camp
- ⊡ Incident Command Post
- ⊣ Drop Point
- ⊗ Division Break
- ⊡ Staging Area
- ▲ Hazard
- Highway
- Paved Road
- Gravel Road
- Dirt Roads
- Unimproved Roads
- Oakridge to Crescent - 55 min.
- Oakridge to DP 599 - 1 hr. 35 min.
- Bristow State Park to Oakridge - 31 min.



COVID-19 Mitigations for Cedar Creek Fire

- Masks are not required indoors unless working in a county with a HIGH COVID-19 community level. Currently, Lane County community level is LOW (masking indoors is optional).
- Conduct daily verbal screening checks within crews, report any COVID-like symptoms to your direct supervisor. Supervisors should report any positive symptoms to the Medical Unit for next steps.
- Observe social distancing standards while waiting in line for food and limit contact with others outside of your crew in the food service line. If possible, send crew representatives to pick up meals.
- Practice good personal hygiene, wash hands frequently and disinfect high-traffic areas on a regular basis.
- Limit close contact between firefighters and the public as much as possible to prevent exposure and spread.





EMERGENCY PLAN INCIDENT WITHIN AN INCIDENT

ON SCENE INCIDENT COMMANDER

In the event of an accident or medical incident of any size, your primary responsibility is to ENSURE that the victim(s) receive prompt and effective Triage, Treatment, Extrication and Transport.

- **ENSURE THE MEDICAL INCIDENT REPORT IN THE INCIDENT ACTION PLAN IS BEING USED AND FOLLOWED- *IF DETERMINED TO BE A GREEN, DO NOT DECLARE EMERGENCY TRAFFIC AND ONLY COMPLETE LINE 1-4 ON MIR*.**
- Conduct size-up of the incident nature of accident, number type of resources involved, latitude and longitude location (DD°MMM.MM format): notify incident communications center and supervisor, request assistance as needed.
- Order and coordinate medical and support response to the accident.
- Evaluate special needs (law enforcement, haz mat, etc.).
- Clear the command frequency if medical emergency, coordinate with incident communications and air attack for air medical transportation needs.
- Preserve and photograph the scene for accident investigation.
- Remain aware of surroundings and the status of the main incident (delegate personnel to monitor the main fire) to ensure safety of medical treatment personnel.
- Until relieved, supervise and manage all personnel involved at the incident scene.

MEDICAL PLAN (ICS 206 WF)

Incident/Project Name		1. Operational Period						
Cedar Creek-Potter/Big Swamp		October 16, 2022 0700-2000						
2. Ambulance Services								
Name	Complete Address	Phone	Advanced Life Support (ALS)					
			Yes	No				
Oakridge Fire & EMS	47592 Hwy 58 Oakridge, OR	Command Dispatch 541-682-3978	X					
Eugene Springfield Fire Dept	403 Main St. Springfield, OR	Command 541-682-5899	X					
Sun River Fire & Rescue	57475 Abbott Dr Sunriver, OR	Command	X					
La Pine Fire & Rescue	51590 Huntington Rd La Pine, OR	Command	X					
3. Air Ambulance Services								
Name	Phone	Location						
Emergency Air Transport	Command Secondary 911	Varies based on Availability Use VMED 29 air to ground						
Short Haul	Command Secondary 911	Sunriver, OR/KAPKA AS 350 N350HQ						
4. Hospitals								
Name Complete Address	Coordinate Standard Degrees Decimal Minutes DD° MM.MMM' N - Lat DD° MM.MMM' W - Long		Travel Time From ICP Air Gnd		Phone	Helipad Yes No		Level of Care Facility
Sacred Heart Medical Center (Riverbend) 3333 Riverbend, Drive Springfield, OR	Lat:	44°04.881' N		15 min s	1 hr	541-222- 6931	X	Level 2
	Long:	123°01.588' W						
Legacy Emanuel 2801 N Gantenbien Portland, OR	Lat:	45°32.59' N		30 min s	3 hrs	503-413- 2200	X	Level 1 Trauma Burn Center
	Long:	122°40.16' W						
St Charles Medical Center 2500 NE Neff Rd Bend, OR	Lat:	44°04.102' N		45 min s	1.45 hrs	541-706- 7777	X	Level 2
	Long:	121°16.053' W						
5. Division Branch Group	Capability				Personnel			
Div. A/Y	ALS Ambulance EMPF ALS Ambulance				Ambo 1 (E-99) Line Medic Kemerer (O-1145) Ambo 7 (E-5405)			
Div. T	ALS Ambulance EMPF EMPF				Ambo 3 (E-257) Line Medic Richmond (O-1173) Line Medic Meade (O-1172)			
Div. S	ALS Ambulance EMPF, EMTF, UTV EMPF				Ambo 3 (E-257) *Shared Resource Medic 35 (S-1334) Line Medic Luer (O-1146)			

MEDICAL PLAN (ICS 206 WF)

Div. W/X	EMPF, (3) EMTF, Side by side, High Angle Rope Extraction EMPF	REMS 1 (S-279) Line Medic Neel (O-1144)	
Div. P/R	ALS Ambulance ALS Ambulance EMPF, EMTF, UTV EMPF	Ambo 9 (E-5465) Ambo 6 (E-5115) Medic 2 (S-5051) Line Medic Gile (O-1171)	
Junction Camp	Lee Venning MEDL Mariann Turley MEDL-t		
Potter/Big Swamp	ALS Ambulance	Ambo 2 (E-176)	
Oakridge ICP	Diana Braun MEDL		
6. Prepared By (Medical Unit Leader)	7. Date/Time	8. Reviewed By (Safety Officer)	9. Date/Time
Diana Braun <i>Diana Braun</i>	10/15/2022 1800	Jack Cates <i>Jack Cates</i>	10/15/2022 1800

Short-Haul Operations

CAPABILITIES

- During an operational Short-Haul the helicopter is capable of inserting Short-Haulers into an area with tight canopy cover and/or technical terrain.
- Haul line lengths range from 100 feet to 350 feet.
- Short hauler and/or medical gear can be delivered to the medical scene even if extraction by short-haul is not necessary.

ORDERING

- EMT or Medical Incident IC determines medical extraction is required.
- Follow local established procedures and/or Medical Incident Report (MIR) in the IRPG.
- Confirm aircraft type, call sign, estimated time of arrival and frequency.
- Give site selection information when ordering: hazards (i.e. ash, smoke, snags, aerial), tree height, terrain, and patient transport configuration (supine or seated position). Repeat hazards and give updated weather conditions as well as brief patient update to responding helicopter.

PROCESS: The helicopter will fly to the coordinates provided. They will make contact with ground personnel on scene with the patient using an identified air-to-ground frequency. The helicopter will complete a short-haul recon and size up, gather patient update information and then fly to a landing zone (LZ) to configure for short-haul operations. The helicopter will be monitoring the appropriate air-to-ground, air guard and victor frequencies. From this point, ground resources should only contact the helicopter in case of an emergency. During the insertion and extraction process ground personnel must be clear of the area.

ON SCENE: EXPECT THE FOLLOWING

- 1 or 2 rescuers (at least one qualified as an EMT or higher)
- Backboard (if needed and not already on scene)
- All equipment necessary for patient extraction

The Patient Extraction Bag accommodates most backboards.
-A patient on a backboard, TRS, SKED or litter will be inserted into the bag.



The Seat Harness is used for patients not requiring the use of a backboard.



IAP INSERT

MEDICAL PLAN (ICS 206 WF)

Controlled Unclassified Information//Basic

Medical Incident Report

FOR A NON-EMERGENCY INCIDENT, WORK THROUGH CHAIN OF COMMAND TO REPORT AND TRANSPORT INJURED PERSONNEL AS NECESSARY.

FOR A MEDICAL EMERGENCY: IDENTIFY ON SCENE INCIDENT COMMANDER BY NAME AND POSITION AND ANNOUNCE "MEDICAL EMERGENCY" TO INITIATE RESPONSE FROM IMT COMMUNICATIONS/DISPATCH.

Use the following items to communicate situation to communications/dispatch.

1. CONTACT COMMUNICATIONS / DISPATCH (Verify correct frequency prior to starting report)

Ex: "Communications, Div. Alpha. Stand-by for Emergency Traffic."

2. INCIDENT STATUS: Provide incident summary (including number of patients) and command structure.

Ex: "Communications, I have a Red priority patient, unconscious, struck by a falling tree. Requesting air ambulance to Forest Road 1 at (Lat./Long.) This will be the Trout Meadow Medical, IC is TFLD Jones. EMT Smith is providing medical care."

Severity of Emergency / Transport Priority	<input type="checkbox"/> RED / PRIORITY 1 Life or limb threatening injury or illness. Evacuation need is IMMEDIATE <i>Ex: Unconscious, difficulty breathing, bleeding severely, 2° – 3° burns more than 4 palm sizes, heat stroke, disoriented.</i> <input type="checkbox"/> YELLOW / PRIORITY 2 Serious Injury or illness. Evacuation may be DELAYED if necessary. <i>Ex: Significant trauma, unable to walk, 2° – 3° burns not more than 1-3 palm sizes.</i> <input type="checkbox"/> GREEN / PRIORITY 3 Minor Injury or illness. Non-Emergency transport <i>Ex: Sprains, strains, minor heat-related illness.</i>	
Nature of Injury or Illness & Mechanism of Injury		<i>Brief Summary of Injury or Illness (Ex: Unconscious, Struck by Falling Tree)</i>
Transport Request		<i>Air Ambulance / Short Haul/Hoist Ground Ambulance / Other</i>
Patient Location		<i>Descriptive Location & Lat. / Long. (WGS84)</i>
Incident Name		<i>Geographic Name + "Medical" (Ex: Trout Meadow Medical)</i>
On-Scene Incident Commander		<i>Name of on-scene IC of Incident within an Incident (Ex: TFLD Jones)</i>
Patient Care		<i>Name of Care Provider (Ex: EMT Smith)</i>

3. INITIAL PATIENT ASSESSMENT: Complete this section for each patient as applicable (start with the most severe patient)

Patient Assessment: See IRPG page 106

Treatment:

4. TRANSPORT PLAN:

Evacuation Location (if different): (Descriptive Location (drop point, intersection, etc.) or Lat. / Long.) Patient's ETA to Evacuation Location:

Helispot / Extraction Site Size and Hazards:

5. ADDITIONAL RESOURCES / EQUIPMENT NEEDS:

Example: Paramedic/EMT, Crews, Immobilization Devices, AED, Oxygen, Trauma Bag, IV/Fluid(s), Splints, Rope rescue, Wheeled litter, HAZMAT, Extrication

6. COMMUNICATIONS: Identify State Air/Ground EMS Frequencies and Hospital Contacts as applicable

Function	Channel Name/Number	Receive (RX)	Tone/NAC *	Transmit (TX)	Tone/NAC *
COMMAND					
AIR-TO-GRND					
TACTICAL					

7. CONTINGENCY: Considerations: If primary options fail, what actions can be implemented in conjunction with primary evacuation method? Be thinking ahead.

8. ADDITIONAL INFORMATION: Updates/Changes, etc.

REMEMBER: Confirm ETA's of resources ordered. Act according to your level of training. Be Alert. Keep Calm. Think Clearly. Act Decisively.

Controlled Unclassified Information//Basic