

Incident Action Plan Cedar Creek – Potter – Big Swamp



SCAN QR CODE
For
BRIEFING LINK
DOWNLOAD IAP
DOWNLOAD MAPS
Send in **PHOTOS**
CHECK-IN
Submit **TIME** to **FINANCE**



October 20, 2022
Operational Period
Dayshift – 0700-2000



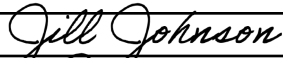
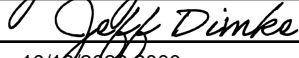
Cedar Creek - OR-WIF-220180 – P6PYP6 (0618)

Cedar Creek – WA DNR – 221-IWA


Potter – OR-WIF-220170 – P6PX6A (0618)

Big Swamp – OR-WIF-220189 – P6PY6M (0618)

INCIDENT OBJECTIVES (ICS 202)

1. Incident Name:	2. Operational Period: DAY	
CEDAR CREEK	Date/Time From: 10/20/2022 0700 THU	Date/Time To: 10/20/2022 2000 THU
3. Objective(s):		
<p>Provide for firefighter and public safety; specifically manage risk to firefighters by ensuring hazards are identified, assessed and where possible mitigated. Be prepared to accept residual risk when exposure is commensurate with values threatened and the probability of achieving objectives is high.</p> <p>Implement operational plans to keep fire within established primary control lines to protect identified values at risk including:</p> <ul style="list-style-type: none"> • Oakridge, Westfir, and High Prairie • Highway 58 and Forest Road 19 • Union Pacific railroad corridor • Waldo Lake and associated recreational investments • Private infrastructure and recreational investments within surrounding Cascade Lakes Highway • Willamette Pass Ski-Area; Private infrastructure, and Forest Recreational Investments <p>Promote coordination and partnership by developing clear dialogue and providing timely information between the IMT, affected agencies, and the public. Engage in effective communication with Agency Administrators and cooperators.</p> <p>Coordinate with Resource Advisors to complete fire suppression and approved repair work to protect natural and cultural values.</p>		
4. Operational Period Command Emphasis:		
Complete operational assignments and tasks as directed in the IAP and by your Division Supervisor to avoid mission creep.		
General Situational Awareness:		
Monitor the weather, especially wind. Ensure overhead hazards are mitigated and L.C.E.S. is in place.		
5. Site Safety Plan Required? Yes <input checked="" type="checkbox"/> No <input type="checkbox"/>		
Approved Site Safety Plan(s) Located ICP		
6. Incident Action Plan (the items checked below are included in this Incident Action Plan):		
<input checked="" type="checkbox"/> ICS 202 <input checked="" type="checkbox"/> ICS 203 <input checked="" type="checkbox"/> ICS 204 <input checked="" type="checkbox"/> ICS 205 <input type="checkbox"/> ICS 205A <input checked="" type="checkbox"/> ICS 206	<input checked="" type="checkbox"/> ICS 207 <input type="checkbox"/> ICS 208 <input checked="" type="checkbox"/> ICS 220 <input checked="" type="checkbox"/> Map/Chart <input checked="" type="checkbox"/> Weather Forecast/Tides/Currents	Other Attachments: <input checked="" type="checkbox"/> FIRE BEHAVIOR, SAFETY MESSAGE <input checked="" type="checkbox"/> HR MESSAGE, FINANCE <input checked="" type="checkbox"/> LOGISTICS INFO, PHONE LISTS <input checked="" type="checkbox"/> UNIT LOG, CHECK-IN / DEMOB
7. Prepared by: JILL JOHNSON	Position/Title: PSC2	Signature: 
8. Approved by Incident Commander:	Name: JEFF DIMKE	Signature: 
ICS 202	IAP Page	Date/Time: 10/19/2022 2000

ORGANIZATION ASSIGNMENT LIST (ICS 203)

1. Incident Name:		2. Operational Period: DAY	
CEDAR CREEK		Date/Time From: 10/20/2022 0700 THU	Date/Time To: 10/20/2022 2000 THU
3. Incident Commander(s) and Command Staff:		FACILITIES UNIT	TOM BOYD
IC/UC	BOB SHINDELAR	GROUND SUPPORT UNIT	DAVE HARSH (ICP)
DEPUTY	JEFF DIMKE	MEDICAL UNIT	DIANA BRAUN (ICP)
SAFETY OFFICER	JACK CATES; TROY CORN PHIL GRAHAM (T)	COMMUNICATIONS UNIT	MISSY PARKER PAUL NOA
INFORMATION OFFICER	LIV STECKER	FOOD UNIT	LAURA MILLER
LIAISON OFFICER	JEFF SEVIGNEY	SECURITY UNIT	JIM MURRAY (ICP)
HUMAN RESOURCES	SUSIE MANEZES (ICP)	SECURITY MANAGER	DAVID CLARK (JUNCTION) JAKE SCHMALZ (T)
4. Agency/Organization Representative(s):		7. Operations Section:	
Agency/Organization	Name	FIELD OPS	AARON ROWE MIKE DAVIS (T)
DESCHUTES NF / WILAMETTE NF - AA	ROBERT GENTRY	PLANNING OPS	KURT RANTA
MIDDLE FORK DIST RANGER	MOLLY JULLERANT		
MIDDLE FORK DIST FMO	JIMMER HUNT	DIVISION/GROUP	A / Y
WILLAMETTE NF - FOREST SUP	DUANE BISHOP	DIVISION/GROUP	S
DESCHUTES NF - FOREST SUP	HOLLY JEWKES	DIVISION/GROUP	T
LEAD READ	MARK RICHARDSON	DIVISION/GROUP	P / R
		DIVISION/GROUP	W / X
		DIVISION/GROUP	POTTER / SWAMP
5. Planning Section:		7b. Air Operations Branch:	
CHIEF	JILL JOHNSON	AIR OPS BRANCH DIRECTOR	PAUL BALFOUR
DEPUTY	MARGE HUTCHINSON	AIR SUPPORT SUPERVISOR	ALBERT FARIA
RESOURCES UNIT	HOWARD JOHNSON (VIRTUAL)	8. Finance/Administration Section:	
SITUATION UNIT	SCOTT BLISS	CHIEF	CHERI FULLER
DOCUMENTATION UNIT	DEIDRE SMITH (VIRTUAL)	DEPUTY	CHRISTINA GOEBEL
DEMOBILIZATION UNIT	MIKE HESTON (VIRTUAL)	TIME UNIT	STEVE CROW
FIRE BEHAVIOR ANALYST	DON STRAND	PROCUREMENT UNIT	MARK BOHNET
TRAINING SPECIALIST	DEBRA PACKARD	COST UNIT	KAY HIGH (VIRTUAL)
GIS SPECIALIST	SHAWN BUSHNELL MIKE TONKEL	ICPI	ROB HECHINGER
IT SPECIALIST	GEORGE JENKINS CHARLENE JUMPER		
INCIDENT METEOROLOGIST	BOB TOBIN		
AIR RESOURCE ADVISOR	MARLENE DEPIETRO		
6. Logistics Section:			
CHIEF	KEVIN HAUGHTON WHIT SPENCER (T)		
SUPPLY UNIT	JOHN KAUPA		
9. Prepared By:	Name: JILL JOHNSON	Position/Title: PSC	Signature: 
ICS 203	IAP Page	Date/Time: 10/19/2022 2000	

FIRE WEATHER FORECAST

FORECAST NO:	76	NAME OF FIRE:	Cedar Creek
PREDICTION FOR:	Thursday, Oct 20, 2022	UNIT:	OR-WIF-220180
ISSUED:	1900 PDT, Oct 19, 2022	Incident Meteorologist:	Bob Tobin

***** ONE MORE DAY OF DRY WEATHER...THEN BIG WEATHER CHANGES ARE COMING THIS WEEKEND AS THE REGION TRANSITIONS INTO A COOL AND WET PATTERN*****

DISCUSSION: The ridge of high pressure will flatten today in response to the first in a series of Pacific weather systems. Temperatures will be down around 5 degrees or more...but it will still be dry. A major change in the weather pattern will follow this weekend as a vigorous weather system moves into the region.

THURSDAY: MODERATE MORNING INVERSION...WEAK AFTERNOON MIXING

WEATHER:	Sunny above the inversion. Smoke, fog and haze in the morning below the inversion. Increasing clouds.	MAX TEMPS:	West: 65-75 East: 60-70
WIND (EYE LEVEL, MPH):	Sheltered areas: VRB 2-4 mph. Becoming up-slope 4-6 mph after 1200 Ridges, unsheltered areas, wind-aligned drainages: E-SE 4-8 mph...Becoming NW 5-10 mph after 1200-1400. East of the Crest: NW 5-10 mph...gusts to 15 mph.	MIN RH:	West: 20-30% East: 20-30%
HAINES (HIGH LEVEL):	3 (Stability 1, moisture 2)	CWR:	0%
PEAK MIXING HEIGHT/WIND:	3,500 ft AGL/N-NE 8-10 mph	Rain Amount:	0.00
INVERSION:	Moderate to strong, mid-slope, some mixing after 1200.	LAL:	1

THURSDAY NIGHT: BETTER RECOVERIES ON THE RIDGES

WEATHER:	Partly cloudy, Areas of smoke and haze.	CWR:	0%
WIND (EYE LEVEL, MPH):	Sheltered areas, mid-slopes, and valley bottoms: Becoming drainage 2-4 mph after 1900 Ridges: W 7-10 mph. East Side: NW 5-10 mph.	Rain Amount:	0.00
MIN TEMPS:	Ridges: 45-55, Mid-slope and below: 45-50, East: 30-35.		
MAX RH:	Ridges to mid-slope: 40-50%, Mid-slope and below: 75-85%, East of the crest: 80-90%		
INVERSION:	Weak to moderate developing on mid-slope after 1830.		

FRIDAY:

WEATHER:	Cloudy. Smoke, fog and haze in the morning below a weak inversion. Rain and mountain snow Friday night.	MAX TEMPS:	West: 50-60 East: 50-60
WIND (EYE LEVEL, MPH):	Sheltered areas: VRB 2-4 mph...becoming up-slope 3-6 mph after 1100. Ridges, unsheltered areas, wind-aligned drainages: SW-W 5-10 mph...increasing to SW 12-18 mph with gusts to 30 mph after 2000. East of the Crest: W 10-12 mph with gusts to 25-30 mph.	MIN RH:	West: 45-55% East: 35-45%
HAINES (HIGH LEVEL):	2 (Stability 1, moisture 1)	CWR:	80%
PEAK MIXING HEIGHT/WIND:	4,000 ft AGL/SW 10-15 mph.	Rain Amount:	0.25-50
INVERSION:	Weak to moderate, mid-slope, mixing after 1200	LAL:	1

EXTENDED OUTLOOK:

SATURDAY:	Rain and mountain snow. Snow level around 4500 feet. Snow accumulation 3-5 inches. Highs 35-45. Min RH 80-90%...Winds W 10-15 with gusts 20 to 25 mph.
SUNDAY	Rain and mountain snow showers. Snow level around 4000 feet. Highs 35 to 50....Min RH 75-90%...SW 10-12 mph.
MONDAY:	Rain and mountain snow showers. Highs in the mid-30s to near 50....Min RH 75-90%...SW-W 8-12 mph gusts to 15 mph.

FIRE BEHAVIOR FORECAST

FORECAST NUMBER: 75	TYPE OF FIRE: Wildland Fire
FIRE NAME: Cedar Creek	OPERATIONAL PERIOD: 10/20/2022, 0700-2000
DATE ISSUED: 10/19/2022	TIME ISSUED: 1900
UNIT: USFS-OR-WIF	SIGNED: Don Strand, FBAN

INPUTS

Weather Summary: Sunny above the inversion. Smoke, fog and haze in the morning below the inversion. Increasing clouds. **Temps:** 60-75, **Min RH:** 20%, **Sheltered areas:** VRB 2-4 mph. Becoming up-slope 4-6 mph after 1200. **Ridges, unsheltered areas, wind-aligned drainages:** E-SE 4-8 mph...Becoming NW 5-10 mph after 1200-1400. **East of the Crest:** NW 5-10 mph...gusts to 15 mph.

See Attached Fire Weather Forecast

Fire Behavior Summary

GENERAL: Primary fuel types are TL5 and TU5. **TL5** is compact short needle conifer litter, found primarily in 2nd growth Douglas fir plantations. **TU5** is timber overstory with very high surface fuel load- short needle conifer with heavy brush and down log fuel loading in mature or old growth stands. Lichen is present across the landscape and spots readily. Timber stands with needle litter (**TL3**), dominated by Fir, Hemlock, or Lodgepole Pine. **TL8** is timber stands with needle litter dominated by Ponderosa Pine.

Surface Fuel Type	Head Fire ROS	Head FL	Spot Distance	Energy Release Component
Understory and litter fuels	1 to 6 ch/hr or feet/min.	Up to 1 to 5 feet	Up to 0.2 mile	98 th percentile

Haines	Probability of Ignition	Fine dead fuel moisture 1-hour	10-hour dead fuel moisture	1000- hour fuel moisture
3 (Low)	40 to 70%.	4-8%	6 to 9%	11 to 14%

Active fire behavior potential due to poor/moderate nighttime RH recover on mid and upper slopes with dry live and dead fuels. Continued light easterly winds switching in afternoon. Expect slow surface fire spread in the needle and timber litter with smoldering, creeping, backing and flanking. In areas where ladder fuels are above heat, expect torching with short range spotting. On steeper slopes in available fuels, potential for short upslope runs exists where the winds align with slopes. In many locations, lichen aids fire transition from surface to crowns and lichen also is efficient in causing spot fires. In areas of dirty burns, fire has potential to slowly move through areas with heavier needle cast. Areas of thick smoke/inversion will affect fire intensity and also limit visibility.

Today's Fire Behavior:

DIV A/Y: Expect mostly smoldering and creeping with isolated torching in areas with heavy surface fuels under sheltered canopy. Expect continued backing fire spread down slope in areas of available fuels. Where backing fire approaches containment lines, potential for spotting across lines exist.

DIV W/X: Expect smoldering and creeping fire behavior in interior unburned islands of fuels. Potential for single tree torching. In areas with steeper slopes with heavy surface loading, expect upslope movement with potential for increased fire intensity.

DIV T. S: Surface fire spread in heavy fuels with single and group torching. Potential for short upslope runs exists. Smoldering and creeping in needle litter under regeneration stands with very limited torching. Potential for spotting from rolling material in areas with steeper slopes. There will likely be spot fires from yesterday or even last night fire behavior.

DIV P/R: Smoldering, creeping, backing and flanking fire spread in the heavy surface fuels. Expect occasional torching with potential for isolated short-range spotting.

AIR OPERATIONS: Expect limited visibility due to smoke. Strong, mid-slope inversion, some mixing after 1200.

SAFETY

In areas under the inversion, expect limited fire intensity. If the inversion clears out, expect increased fire intensity.

Continue to watch for reburn/flare up potential in the areas with dirty burns with heat treated ladder fuels.

Rain is forecast for Friday night; be careful we aren't blinded by the "light and the end of the tunnel". So, let's continue to maintain our Situational Awareness for today's assignment.



SAFETY MESSAGE

20 October 2022

INCIDENT: CEDAR CREEK

OPERATIONAL PERIOD: 0700-2000

TOPICS:



Let's All Cross the Finish Line Together?

- Watch out for one another. We are our brother and sister's keeper!
- Stick to the plan, stay the course.
- Think through the task.
- Complete the risk assessment.
- Safe Production – Safe Maintenance - Zero Incidents

We do this for those who are waiting for us at home – do not let them down!

Highway 58 Construction

EXPECT PILOT CAR OPERATIONS BETWEEN MM56-70. If you are turning onto HWY 58 from a crossroad, wait for the pilot car to approach. We want to avoid driving against the one-way traffic.

IF YOU SEE CONES, YOU ARE IN A ONE-WAY CONSTRUCTION ZONE.

SAFETY OFFICER: Troy Corn, Jack Cates and Phil Graham (t)

Deliberate Risk Assessment-Hazard Summary

20 OCT 2022

Hazard	Mitigation	Post Risk
Extraction Time	Identify medivac sites and helispots. Initiate ground transport to accident site for transport capability. Identify EMT/EMTP from resources assigned to division. Provide line qualified paramedics to each division as available. Review IWI protocol to ensure familiarity. Utilize agency and civilian medivac as treatment/timing dictates. Evaluate on-going need for repositioning medical personnel. Provide Dust abatement on Helispots as needed.	HIGH
Aircraft	Utilize Air Attack. Ensure all resources are a safe distance from all bucket and retardant drops. Establish LCES. Utilize air to ground primary for fixed wing, air to ground 2 for bucket work as needed. Reference IRPG (Safe aircraft operations pg. 61-62). Ensure IA resources have coordination with unassigned local air resources to provide deconfliction.	HIGH
Railroad Right-of-Way	Implement work windows/slow orders with Union Pacific when personnel are working near the right-of-way. Post lookouts at each end of work zones.	HIGH
Hazard Trees	Use avoidance to limit exposure time. Fall ahead to avoid exposure. Use qualified fallers or alternate methods if needed. Conduct on- going risk analysis of all work areas. Follow Hazard Tree Safety Guidelines (IRPG page 20-21).	HIGH
Heavy Equipment	Post lookouts around equipment work areas. Establish communications with equipment boss and operator. Do not work down slope from equipment. Follow agency guidelines for chipping operations.	HIGH
Physical Factors	Maintain hydration schedule. Closely monitor work rate and implement rest periods. Maintain nutrition. Ensure adequate work/rest.	MODERATE
Fire Behavior	Be aware of burn windows and weather impacts and min/max RH for flashy fuels/local conditions. Report changes to FBAN and IMET. Establish MAP for disengagement to provide for an orderly retreat given lack of safety zones. Have a plan for disengagement that establishes a designated meeting point and maintains personnel accountability.	MODERATE
Steep Terrain/Gravity	Establish LCES. Do not work crews above or below each other. Post lookouts for rolling material. Watch footing in loose soil, rock and around vegetation. Do not work below heavy equipment. Scout and identify travel routes.	MODERATE
Transportation	Coordinate with ODOT for construction windows and areas of one lane traffic along HWY58. Provide daily updates of construction progress. Sign all incident roads that provide access to divisions. Provide daily updated travel plan maps. Practice defensive driving. * the first line resource to report the asterisk to the safety trailer wins \$100. In local communities obey the posted speed limits. Use reader boards to provide advanced warning and control entry to base camp as needed. Identify and evaluate contingency and alternate escape and travel routes. Provide dust abatement and grading as needed.	MODERATE
Unburned Fuels/Firing Ops	Establish LCES. Ensure management action points are implemented and followed. Weather updates as needed during burning operations. Locate indirect firelines to minimize unburned fuels. Follow Interagency Ignition Guide. Ensure communications between all firing operations. Establish road security at all firing sites. Follow approved firing plan for unburned fuels.	MODERATE
Environmental Factors	Establish MAP for disengaging crews from work assignments during periods of inclement weather. Assign medical personnel to camp. Assess for known allergies and report to medical personnel. Obtain Bee Bopper/wasp spray and yellow jacket traps. Maintain an awareness wildlife and poison oak. Identify and report allergies to your chain of command.	MODERATE
Communication	Evaluate for dead zones prior to engagement. Utilize human repeaters as needed. Ensure accountability of resources in problem areas. Spiking resources must have communication coverage.	LOW
Viral Transmission Mitigations, Communicable Disease	Maintain awareness of health, perform self checks, maintain social distancing, wear face coverings in accordance with CDC recommendations. Report and isolate if not feeling well. Use remote briefings, spike camps and logistical layouts that provide for social distancing as necessary.	LOW
Public Interaction	Implement area and road closures as necessary. Maintain a lookout for hunters in and out of closure areas. Maintain awareness of evacuation areas and provide accurate information dissemination.	LOW
Initial Attack	Ensure identified IA resources are briefed of expectations and ensure communication plan is provided. Ensure resources are briefed on IA command structure. Provide identified crews with area maps.	LOW

Division/Group Assignment List (ICS 204 WF)

Controlled Unclassified Information//Basic

1. Incident Name:				3.			
CEDAR CREEK				Branch:		Division/Group	
2. Operational Period: DAY							
Date/Time From: 10/20/2022 0700		THU		Date/Time To: 10/20/2022 2000		THU	
4. Operations Personnel							
FIELD OPERATIONS		AARON ROWE MIKE DAVIS (T)		DIVISION/GROUP SUPERVISOR		ISAIAH SALSKY	
AIR OPERATIONS BRANCH DIRECTOR		PAUL BALFOUR		SAFETY OFFICER		TROY CORN; JACK CATES PHIL GRAHAM (T)	
5. Resources Assigned this Period							
Strike Team / Task Force / Resource Designator		LWD	Leader		Number Persons	Drop Off PT./Time	Pick Up PT./Time
O-1054 SOF2		10/22	PAUL BRNA		1	ICP/0700	ICP/2000
O-1138 TFLD		10/27	HALE REDDING		1	ICP/0700	ICP/2000
O-1190 TFLD		10/27	ANDREW HASTINGS		1	ICP/0700	ICP/2000
O-1162 HEQB		10/27	LEVI SENSENIG		1	ICP/0700	ICP/2000
O-868 FMOD PACIFIC RIDGELINE		10/31	SAM HOLSTAD		2	ICP/0700	ICP/2000
E-590 ENG6 DIAMOND ROAD MAINTENANCE		10/21	TYLER DWER		3	ICP/0700	ICP/2000
E-596 ENG3 TORRES CONTRACTING		10/21	CHAD CORWIN		3	ICP/0700	ICP/2000
E-559 EXC3 OWENS FREIGHT LINES		10/28	DOUG JONES		2	ICP/0700	ICP/2000
E-5077 SKD2 HOFBAUER		10/25	ALEX HOMER		2	ICP/0700	ICP/2000
O-1039 REAF (T)		10/25	SUNYA INCE-JOHANNSEN		1	ICP/0700	ICP/2000
O-1145 LINE MEDIC KEMERER		10/26	KYLE KEMERER		1	ICP/0700	ICP/2000
E-99 AMBULANCE 1		10/25	GEORGE DUARTE		2	ICP/0700	ICP/2000
6. Control Operations/Work Assignments:							
<p>Task: Keep fire south of the 19 Rd and east of the 2409 Rd. Continue repair as needed. Secure fire edge on the 19 and 1938 roads. Monitor, patrol, and mop up both direct and indirect primary lines. Monitor fire backing into Fisher Creek and use aerial resources as needed.</p> <p>Purpose: Protect infrastructure and values at risk in the community of Oakridge and High Prairie.</p> <p>End State: Fire remains inside current containment lines. Roads are returned to pre-fire conditions.</p>							
7. Special Instructions:							
<ul style="list-style-type: none"> Be IA ready. Areas to be avoided are marked with either black/yellow or red dot on white flagging. Consult Resource Advisors if you have any questions. Backhaul all excess equipment. 							
8. Division/Group Communication Summary							
Function	Channel	RX Frequency N/W	RX Tone/NAC	TX Frequency N/W	TX Tone/NAC	Mode	
COMMAND	1	170.0000 N	136.5	166.6750 N	136.5	A	
TACTICAL	10	166.7750 N	136.5	166.7750 N	136.5	A	
AIR TO GROUND	13	168.3375 N		168.3375 N		A	
AIR TO GROUND	14	169.4625 N		169.4625 N		A	
9. Prepared By (Resource Unit Leader)			Approved By (Planning Section Chief)			Date	Time
MARGE HUTCHINSON			JILL JOHNSON			10/19/2022	2000

Division/Group Assignment List (ICS 204 WF)
Controlled Unclassified Information//Basic

1. Incident Name:				3.		
CEDAR CREEK				Branch:	Division/Group	
2. Operational Period: DAY						
Date/Time From: 10/20/2022 0700 THU		Date/Time To: 10/20/2022 2000 THU		P / R		
4. Operations Personnel						
FIELD OPERATIONS		AARON ROWE MIKE DAVIS (T)		DIVISION/GROUP SUPERVISOR		ERIC BADER
AIR OPERATIONS BRANCH DIRECTOR		PAUL BALFOUR		SAFETY OFFICER		TROY CORN JACK CATES; PHIL GRAHAM (T)
5. Resources Assigned this Period						
Strike Team / Task Force / Resource Designator		LWD	Leader	Number Persons	Drop Off PT./Time	Pick Up PT./Time
O-1114 SOFR		10/23	ALEC MCAFFEE	1	ICP/0700	ICP/2000
O-1164 TFLD		11/04	JOEL BURGETT	1	ICP/0700	ICP/2000
O-1193 TFLD (T)		10/28	ERICA ZACEK	1	ICP/0700	ICP/2000
O-1160 HEQB		10/26	JORDAN OLSEN	1	ICP/0700	ICP/2000
O-1180 HEQB (T)		10/28	DALTON LOVELESS	1	ICP/0700	ICP/2000
C-128 CR2I PACIFIC OASIS 14A		10/22	JASON MAZA	20	ICP/0700	ICP/2000
E-595 ENG3 FIREMOG		10/21	KEVIN STULTZ	6	ICP/0700	ICP/2000
E-587 ENG6 C & R REFORESTATION		10/21	JAY FLORA	3	ICP/0700	ICP/2000
E-624 ENG3 CAINF - E341		11/02	MICHAEL JOHN CHRISTIAN	4	ICP/0700	ICP/2000
E-5519 WTS2 CLAY'S FAB & REPAIR		10/29	CLAY ALVERNAZ	1	ICP/0700	ICP/2000
E-341 EXC2 HATFIELD TRUCKING		10/30	TODD WISBEY	2	ICP/0700	ICP/2000
E-581 EXC3 HUGHES, PATRICK		10/21	PATRICK HUGHES	2	ICP/0700	ICP/2000
E-5458 EXC2 SANTUCCI RANCH		10/25	AJ MENGES	2	ICP/0700	ICP/2000
O-1153 REAF		10/25	CASEY SCHUDER	1	ICP/0700	ICP/2000
O-1171 LINE MEDIC GILE		10/27	ANDREW GILE	1	ICP/0700	ICP/2000
E-176 AMBULANCE 2		10/23	NATHAN GEER	2	ICP/0700	ICP/2000
8. Division/Group Communication Summary						
Function	Channel	RX Frequency N/W	RX Tone/NAC	TX Frequency N/W	TX Tone/NAC	Mode
COMMAND	4	171.9000 N	136.5	165.9875 N	136.5	A
COMMAND	5	170.0125 N	136.5	165.2500 N	136.5	A
TACTICAL	8	168.6000 N	136.5	168.6000 N	136.5	A
AIR TO GROUND	13	168.3375 N		168.3375 N		A
AIR TO GROUND	14	169.4625 N		169.4625 N		A
9. Prepared By (Resource Unit Leader)			Approved By (Planning Section Chief)		Date	Time
MARGE HUTCHINSON			JILL JOHNSON		10/19/2022	2000

Division/Group Assignment List (ICS 204 WF)
Controlled Unclassified Information//Basic

1. Incident Name:			3.			
CEDAR CREEK			Branch:		Division/Group	
2. Operational Period: DAY			P / R			
Date/Time From: 10/20/2022 0700 THU		Date/Time To: 10/20/2022 2000 THU				
4. Operations Personnel						
FIELD OPERATIONS		AARON ROWE MIKE DAVIS (T)		DIVISION/GROUP SUPERVISOR		ERIC BADER
AIR OPERATIONS BRANCH DIRECTOR		PAUL BALFOUR		SAFETY OFFICER		TROY CORN JACK CATES; PHIL GRAHAM (T)
5. Resources Assigned this Period						
Strike Team / Task Force / Resource Designator		LWD	Leader	Number Persons	Drop Off PT./Time	Pick Up PT./Time
6. Control Operations/Work Assignments:						
<p>Task: Patrol and hold the 4290 road. Complete suppression repair of dozer and hand lines west of DP-700 down to Waldo Lake. Monitor fire growth near Taylor Burn GS by air.</p> <p>Purpose: Protect values at risk on the east side of Waldo Lake, Twin Lakes Lodge, Wickiup Reservoir, Davis Lake, and the community of Crescent, while minimizing additional resource damage.</p> <p>End State: Fire remains inside current containment lines. Control lines are repaired to suppression repair standards.</p>						
7. Special Instructions:						
<ul style="list-style-type: none"> • Waldo Lake should not be used as a water source. • Be IA ready - See IA Communication Plan for Initial Attack. • Areas to be avoided are marked with either black/yellow or red dot on white flagging. • Consult Resource Advisors if you have any questions. • Backhaul all excess equipment. 						
8. Division/Group Communication Summary						
Function	Channel	RX Frequency N/W	RX Tone/NAC	TX Frequency N/W	TX Tone/NAC	Mode
COMMAND	4	171.9000 N	136.5	165.9875 N	136.5	A
COMMAND	5	170.0125 N	136.5	165.2500 N	136.5	A
TACTICAL	8	168.6000 N	136.5	168.6000 N	136.5	A
AIR TO GROUND	13	168.3375 N		168.3375 N		A
AIR TO GROUND	14	169.4625 N		169.4625 N		A
9. Prepared By (Resource Unit Leader)			Approved By (Planning Section Chief)		Date	Time
MARGE HUTCHINSON			JILL JOHNSON		10/19/2022	2000

Division/Group Assignment List (ICS 204 WF)
Controlled Unclassified Information//Basic

1. Incident Name:				3.		
CEDAR CREEK				Branch:	Division/Group S	
2. Operational Period: DAY						
Date/Time From: 10/20/2022 0700 THU		Date/Time To: 10/20/2022 2000 THU				
4. Operations Personnel						
FIELD OPERATIONS		AARON ROWE MIKE DAVIS (T)		DIVISION/GROUP SUPERVISOR		MICHAEL SCHINSTOCK DON GALLAGHER (T)
AIR OPERATIONS BRANCH DIRECTOR		PAUL BALFOUR		SAFETY OFFICER		TROY CORN JACK CATES; PHIL GRAHAM (T)
5. Resources Assigned this Period						
Strike Team / Task Force / Resource Designator		LWD	Leader	Number Persons	Drop Off PT./Time	Pick Up PT./Time
O-1055 SOF2		10/22	MITCH WILSON	1	ICP/0700	ICP/2000
O-1163 TFLD		10/27	TROY SANDERS	1	ICP/0700	ICP/2000
O-1142 HEQB		10/26	ADAM MCKEITH	1	ICP/0700	ICP/2000
O-1075 FMOD TIRY TUDOR		10/21	JOSH TUDOR	1	ICP/0700	ICP/2000
O-1076 FMOD TIMBER TIPPER		10/21	BRANDON DANVILLE	2	ICP/0700	ICP/2000
C-132 CRW1 CHIEF MOUNTAIN IHC		10/26	JOVON JAMES FISHER	22	ICP/0700	ICP/2000
C-120 CRW2 LOMAKATSI ECOLOGICAL		10/21	BRAULIO MAYA	20	ICP/0700	ICP/2000
C-121 CRW2 WILL VALLEY REFORES. CREW 3		10/23	LAZARO MONTANO	20	ICP/0700	ICP/2000
E-592 ENG3 FIREMOG		10/21	MIKE PARENT	6	ICP/0700	ICP/2000
E-589 ENG6 FENIX FORESTRY		11/06	SUZANNE FLYNN	3	ICP/0700	ICP/2000
E-593 ENG3 J3 CONTRACTING		11/06	STEWART NICHOLS	3	ICP/0700	ICP/2000
E-613 ENG4 FIREMOG LLC		10/26	JACE HOFFMAN	3	ICP/0700	ICP/2000
E-614 ENG4 NORTH PACIFIC FORESTRY		10/26	TIM TEEL	3	ICP/0700	ICP/2000
ENG4 452 WIF MFRD (L/L)		10/31	BRIAN BRADBURY	4	ICP/0700	ICP/2000
ENG4 454 WIL MFRD (L/L)		10/31	JOHN CAROON	4	ICP/0700	ICP/2000
E-5109 WTS2 WILLOW CANYON TRUCKING		10/21	JOHN BARRETT	1	ICP/0700	ICP/2000
E-5231 WTS2 TABLE MOUNTAIN		10/24	TOM WHITING	1	ICP/0700	ICP/2000
E-5520 WTS2 MILLER TIMBER		10/21	WAYNE ENGESETH	1	ICP/0700	ICP/2000
8. Division/Group Communication Summary						
Function	Channel	RX Frequency N/W	RX Tone/NAC	TX Frequency N/W	TX Tone/NAC	Mode
COMMAND	2	170.6875 N	136.5	166.5750 N	136.5	A
TACTICAL	12	171.1125 N	136.5	171.1125 N	136.5	A
AIR TO GROUND	13	168.3375 N		168.3375 N		A
AIR TO GROUND	14	169.4625 N		169.4625 N		A
9. Prepared By (Resource Unit Leader)			Approved By (Planning Section Chief)		Date	Time
MARGE HUTCHINSON			JILL JOHNSON		10/19/2022	2000

Division/Group Assignment List (ICS 204 WF)
Controlled Unclassified Information//Basic

1. Incident Name:				3.		
CEDAR CREEK				Branch:	Division/Group S	
2. Operational Period: DAY						
Date/Time From: 10/20/2022 0700 THU		Date/Time To: 10/20/2022 2000 THU				
4. Operations Personnel						
FIELD OPERATIONS		AARON ROWE MIKE DAVIS (T)		DIVISION/GROUP SUPERVISOR		MICHAEL SCHINSTOCK DON GALLAGHER (T)
AIR OPERATIONS BRANCH DIRECTOR		PAUL BALFOUR		SAFETY OFFICER		TROY CORN JACK CATES; PHIL GRAHAM (T)
5. Resources Assigned this Period						
Strike Team / Task Force / Resource Designator		LWD	Leader	Number Persons	Drop Off PT./Time	Pick Up PT./Time
E-606 DZR2 BARRY BROWN INC		10/23	BARRY BROWN	2	ICP/0700	ICP/2000
E-5502 EXC2 OWENS FREIGHT LINES		10/27	KEVIN DEHEART	2	ICP/0700	ICP/2000
E-5019 FEL1 TJS CUTTING		10/30	AUSTIN SEEKINS	2	ICP/0700	ICP/2000
E-5238 SMM3 HACKER MACHINES		10/24	CHRIS HACKER	2	ICP/0700	ICP/2000
E-5462 SMM1 BRINK BROTHERS INC.		10/25	MATT SAYLES	1	ICP/0700	ICP/2000
O-1080 REAF		10/24	RYAN MURDOFF	1	ICP/0700	ICP/2000
O-1146 LINE MEDIC LUER		10/25	JOE LUER	1	ICP/0700	ICP/2000
O-1215 MEDIC 1		11/02	BRIAN ROSSDUETCHER	1	ICP/0700	ICP/2000
E-257 AMBULANCE 3		10/24	DANIEL CHANDLER	2	ICP/0700	ICP/2000
6. Control Operations/Work Assignments:						
Task: Patrol the 5883 road east of DP88 to DP105. Continue to hold and secure control lines on spot fires. Accomplish suppression repair as needed.						
Purpose: To protect values at risk in the community of Oakridge and the Hwy 58 corridor.						
End State: Fire is kept north of Hwy 58, east of Mount David Douglas, and west of Fuji Mountain.						
7. Special Instructions:						
<ul style="list-style-type: none"> • Be IA ready. • Areas to be avoided are marked with either black/yellow or red dot on white flagging. • Consult Resource Advisors if you have any questions. • Backhaul all excess equipment. 						
8. Division/Group Communication Summary						
Function	Channel	RX Frequency N/W	RX Tone/NAC	TX Frequency N/W	TX Tone/NAC	Mode
COMMAND	2	170.6875 N	136.5	166.5750 N	136.5	A
TACTICAL	12	171.1125 N	136.5	171.1125 N	136.5	A
AIR TO GROUND	13	168.3375 N		168.3375 N		A
AIR TO GROUND	14	169.4625 N		169.4625 N		A
9. Prepared By (Resource Unit Leader)			Approved By (Planning Section Chief)		Date	Time
MARGE HUTCHINSON			JILL JOHNSON		10/19/2022	2000

Division/Group Assignment List (ICS 204 WF)
Controlled Unclassified Information//Basic

1. Incident Name:				3.		
CEDAR CREEK				Branch:	Division/Group T	
2. Operational Period: DAY						
Date/Time From: 10/20/2022 0700 THU		Date/Time To: 10/20/2022 2000 THU				
4. Operations Personnel						
FIELD OPERATIONS		AARON ROWE MIKE DAVIS (T)		DIVISION/GROUP SUPERVISOR		SAM STEINSHOUER
AIR OPERATIONS BRANCH DIRECTOR		PAUL BALFOUR		SAFETY OFFICER		TROY CORN JACK CATES; PHIL GRAHAM (T)
5. Resources Assigned this Period						
Strike Team / Task Force / Resource Designator		LWD	Leader	Number Persons	Drop Off PT./Time	Pick Up PT./Time
O-1055 SOF2		10/22	MITCH WILSON	1	ICP/0700	ICP/2000
C-126.3 TFLD		10/22	MATT CLEMINS	1	ICP/0700	ICP/2000
C-126.5 STEQ		10/22	ANDRES MORENO	1	ICP/0700	ICP/2000
O-1086 STEN		10/22	ERIC KIEHN	1	ICP/0700	ICP/2000
O-1077 FELB		10/29	MIKE HENDERSON	1	ICP/0700	ICP/2000
O-1046 FMOD PACIFIC RIDGELINE		10/25	ADAM MILLER	2	ICP/0700	ICP/2000
O-5057 FMOD TIMBER TIPPER		11/01	GERALD FLOYD	2	ICP/0700	ICP/2000
C-126 CRW1 FEATHER RIVER IHC		10/22	MATT CLEMINS	20	ICP/0700	ICP/2000
C-122 CR2I SRV #12		10/22	JULIAN I JACOBO	21	ICP/0700	ICP/2000
C-127 CR2I PATRICK ENV		10/28	DUSTIN DUFFY	20	ICP/0700	ICP/2000
C-134 CR2I GRAYBACK FORESTRY NCC 16A		11/01	CHRIS UNIACK	20	ICP/0700	ICP/2000
E-573 ENG3 CA-CNF E328		10/20	ARTHUR BUONAURO	5	ICP/0700	ICP/2000
E-588 ENG6 MILLER TIMBER		10/22	STEVE ROBERTSON	3	ICP/0700	ICP/2000
E-591 ENG6 C & K WILDLAND FIRE		11/06	MICHAEL MCCURRY	3	ICP/0700	ICP/2000
E-623 ENG3 LNF-314		11/01	EDGAR ESCOBAR ALVAREZ	5	ICP/0700	ICP/2000
E-553 WTT2 COASTAL RANGE FIRE SUPPORT		10/26	SEAN BOEHLJE	1	ICP/0700	ICP/2000
E-159 WTT2 BELLOIR & SONS		11/03	ROSS BELLOIR	1	ICP/0700	ICP/2000
E-5518 WTS2 R25 ENTERPRISES		10/23	RON HAGENAUER	1	ICP/0700	ICP/2000
8. Division/Group Communication Summary						
Function	Channel	RX Frequency N/W	RX Tone/NAC	TX Frequency N/W	TX Tone/NAC	Mode
COMMAND	2	170.6875 N	136.5	166.5750 N	136.5	A
TACTICAL	9	166.7250 N	136.5	166.7250 N	136.5	A
AIR TO GROUND	13	168.3375 N		168.3375 N		A
AIR TO GROUND	14	169.4625 N		169.4625 N		A
9. Prepared By (Resource Unit Leader)			Approved By (Planning Section Chief)		Date	Time
MARGE HUTCHINSON			JILL JOHNSON		10/19/2022	2000

Division/Group Assignment List (ICS 204 WF)
Controlled Unclassified Information//Basic

1. Incident Name:				3.		
CEDAR CREEK				Branch:	Division/Group T	
2. Operational Period: DAY						
Date/Time From: 10/20/2022 0700 THU		Date/Time To: 10/20/2022 2000 THU				
4. Operations Personnel						
FIELD OPERATIONS		AARON ROWE MIKE DAVIS (T)		DIVISION/GROUP SUPERVISOR		SAM STEINSHOUER
AIR OPERATIONS BRANCH DIRECTOR		PAUL BALFOUR		SAFETY OFFICER		TROY CORN JACK CATES; PHIL GRAHAM (T)
5. Resources Assigned this Period						
Strike Team / Task Force / Resource Designator		LWD	Leader	Number Persons	Drop Off PT./Time	Pick Up PT./Time
E-586 DOZ3 ROBERT MURRAY		10/21	KENNY MURRAY	2	ICP/0700	ICP/2000
E-607 DZR2 MILLER TIMBER SERVICES		10/25	DUSTIN FORTADO	2	ICP/0700	ICP/2000
E-608 SKG1 MILLER TIMBER SERVICES		10/24	MARK BOND	1	ICP/0700	ICP/2000
E-610 SKG1 MILLER TIMBER SERVICES		10/25	SCOTT KELLOGG	2	ICP/0700	ICP/2000
E-570 SKD2 BREEZE BY FIRE		10/24	CALEB JOCK	2	ICP/0700	ICP/2000
E-5078 SKD2 RIM ROCK		10/26	MATTHEW PAINTER	2	ICP/0700	ICP/2000
E-625 MBM3 PORTABLE ROCK PRODUCTION		11/01	TOBY DILWORTH	2	ICP/0700	ICP/2000
O-267 REAF (T)		10/24	BRESA MARTIN	1	ICP/0700	ICP/2000
O-1132 ARCH		10/25	MOLLY RAY	1	ICP/0700	ICP/2000
O-1173 LINE MEDIC RICHMOND		10/27	TIM RICHMOND	1	ICP/0700	ICP/2000
O-1172 LINE MEDIC MEADE		10/27	KYLE MEADE	1	ICP/0700	ICP/2000
E-257 AMBULANCE 3		10/24	DANIEL CHANDLER	2	ICP/0700	ICP/2000
6. Control Operations/Work Assignments:						
<p>Task: Hold and secure direct control lines between DP82 and DP88. Continue to evaluate containment options between DP82 and DP86. Utilize aerial resources to hold fire north of Eagle Creek. Assess needs for suppression repair.</p> <p>Purpose: To protect values at risk in the community of Oakridge and the Hwy 58 corridor.</p> <p>End State: Fire is kept north of Hwy 58, and west of Fuji Mountain.</p>						
7. Special Instructions:						
<ul style="list-style-type: none"> • Be IA ready - See IA Communication Plan for Initial Attack. • Areas to be avoided are marked with either black/yellow or red dot on white flagging. • Consult Resource Advisors if you have any questions. • Backhaul all excess equipment. 						
8. Division/Group Communication Summary						
Function	Channel	RX Frequency N/W	RX Tone/NAC	TX Frequency N/W	TX Tone/NAC	Mode
COMMAND	2	170.6875 N	136.5	166.5750 N	136.5	A
TACTICAL	9	166.7250 N	136.5	166.7250 N	136.5	A
AIR TO GROUND	13	168.3375 N		168.3375 N		A
AIR TO GROUND	14	169.4625 N		169.4625 N		A
9. Prepared By (Resource Unit Leader)			Approved By (Planning Section Chief)		Date	Time
MARGE HUTCHINSON			JILL JOHNSON		10/19/2022	2000

Division/Group Assignment List (ICS 204 WF)
Controlled Unclassified Information//Basic

1. Incident Name:				3.		
CEDAR CREEK				Branch:	Division/Group W / X	
2. Operational Period: DAY						
Date/Time From: 10/20/2022 0700 THU		Date/Time To: 10/20/2022 2000 THU				
4. Operations Personnel						
FIELD OPERATIONS		AARON ROWE MIKE DAVIS (T)		DIVISION/GROUP SUPERVISOR		ROBERT HINDS
AIR OPERATIONS BRANCH DIRECTOR		PAUL BALFOUR		SAFETY OFFICER		TROY CORN JACK CATES; PHIL GRAHAM (T)
5. Resources Assigned this Period						
Strike Team / Task Force / Resource Designator		LWD	Leader	Number Persons	Drop Off PT./Time	Pick Up PT./Time
O-1054 SOF2		10/22	PAUL BRNA	1	ICP/0700	ICP/2000
O-905 TFLD		10/21	TED PIEHL	1	ICP/0700	ICP/2000
O-1213 TFLD		10/31	RAY PERRAULT	1	ICP/0700	ICP/2000
O-1006 HEQB (T)		10/21	DAN O'NEAL	1	ICP/0700	ICP/2000
O-1038 FELB (T)		10/24	STUART SMITH-BLOCKLEY	1	ICP/0700	ICP/2000
O-1214 HEQB (T)		10/31	KEITH L SWETLAND	1	ICP/0700	ICP/2000
O-841 FMOD TIMBER TIPPER		10/30	GABE REDDEKOPP	2	ICP/0700	ICP/2000
C-133 CR2I NORTH PACIFIC		10/25	ALEX GALICIA	20	ICP/0700	ICP/2000
E-566 ENG6 NORTH PACIFIC FORESTRY		10/24	COLLIN FICCADENTI	3	ICP/0700	ICP/2000
E-575 ENG6 J.C. OROZCO		10/26	SCOTT HANEY	3	ICP/0700	ICP/2000
E-576 ENG6 J.C. OROZCO		10/26	JAVIER OROZCO	3	ICP/0700	ICP/2000
E-594 ENG3 OUTBACK FIREFIGHTING		10/23	CHUCK MCCONNELL	3	ICP/0700	ICP/2000
E-5163 WTT2 PIERCE FIRE		10/29	GERRY GONZALEZ	2	ICP/0700	ICP/2000
E-5230 WTS2 K & R CONTRACTING, LLC		10/24	RAMA MALONE	1	ICP/0700	ICP/2000
E-5376 GRD2 TABLE MOUNTAIN FORESTRY		10/26	CHRIS JAMES	2	ICP/0700	ICP/2000
E-5529 EXC3 RUNDELL		10/28	MIKE RUNDELL	2	ICP/0700	ICP/2000
8. Division/Group Communication Summary						
Function	Channel	RX Frequency N/W	RX Tone/NAC	TX Frequency N/W	TX Tone/NAC	Mode
COMMAND	1	170.0000 N	136.5	166.6750 N	136.5	A
COMMAND	2	170.6875 N	136.5	166.5750 N	136.5	A
TACTICAL	11	168.2500 N	136.5	168.2500 N	136.5	A
AIR TO GROUND	13	168.3375 N		168.3375 N		A
AIR TO GROUND	14	169.4625 N		169.4625 N		A
9. Prepared By (Resource Unit Leader)			Approved By (Planning Section Chief)		Date	Time
MARGE HUTCHINSON			JILL JOHNSON		10/19/2022	2000

Division/Group Assignment List (ICS 204 WF)
Controlled Unclassified Information//Basic

1. Incident Name:				3.			
CEDAR CREEK				Branch:		Division/Group	
2. Operational Period: DAY				W / X			
Date/Time From: 10/20/2022 0700 THU		Date/Time To: 10/20/2022 2000 THU					
4. Operations Personnel							
FIELD OPERATIONS		AARON ROWE MIKE DAVIS (T)		DIVISION/GROUP SUPERVISOR		ROBERT HINDS	
AIR OPERATIONS BRANCH DIRECTOR		PAUL BALFOUR		SAFETY OFFICER		TROY CORN JACK CATES; PHIL GRAHAM (T)	
5. Resources Assigned this Period							
Strike Team / Task Force / Resource Designator		LWD	Leader	Number Persons	Drop Off PT./Time	Pick Up PT./Time	
O-1103 REAF		10/24	MARK E RICHARDSON	1	ICP/0700	ICP/2000	
O-1212 REAF		10/31	JEREMIE ARTERY	1	ICP/0700	ICP/2000	
O-1144 LINE MEDIC NEEL		10/26	SAMUEL NEEL	1	ICP/0700	ICP/2000	
6. Control Operations/Work Assignments:							
<p>Task: Patrol and secure the 352 and 353 roads. Complete repair on 352 Rd. Complete grading 2468/5871 road system. Hold and secure control line along the 5871 Rd. Use aerial resources as needed to suppress active fire near W/T break.</p> <p>Purpose: To protect values at risk in community of Oakridge and the Hwy 58 corridor.</p> <p>End State: Fire is kept north of railroad and the 352 and 353 roads and north and east of the 5871 Rd</p>							
7. Special Instructions:							
<ul style="list-style-type: none"> • Be IA ready - See IA Communication Plan for Initial Attack. • Areas to be avoided are marked with either black/yellow or red dot on white flagging. • Consult Resource Advisors if you have any questions. • Backhaul all excess equipment. 							
8. Division/Group Communication Summary							
Function	Channel	RX Frequency N/W	RX Tone/NAC	TX Frequency N/W	TX Tone/NAC	Mode	
COMMAND	1	170.0000 N	136.5	166.6750 N	136.5	A	
COMMAND	2	170.6875 N	136.5	166.5750 N	136.5	A	
TACTICAL	11	168.2500 N	136.5	168.2500 N	136.5	A	
AIR TO GROUND	13	168.3375 N		168.3375 N		A	
AIR TO GROUND	14	169.4625 N		169.4625 N		A	
9. Prepared By (Resource Unit Leader)			Approved By (Planning Section Chief)			Date	Time
MARGE HUTCHINSON			JILL JOHNSON			10/19/2022	2000

Division/Group Assignment List (ICS 204 WF)
Controlled Unclassified Information//Basic

1. Incident Name:			3.			
CEDAR CREEK			Branch:	Division/Group POTTER-SWAMP		
2. Operational Period: DAY						
Date/Time From: 10/20/2022 0700	THU	Date/Time To: 10/20/2022 2000	THU			
4. Operations Personnel						
FIELD OPERATIONS	AARON ROWE MIKE DAVIS (T)		AIR OPERATIONS BRANCH DIRECTOR	PAUL BALFOUR		
SAFETY OFFICER	TROY CORN JACK CATES; PHIL GRAHAM (T)		DIVISION/GROUP SUPERVISOR	UNSTAFFED		
5. Resources Assigned this Period						
Strike Team / Task Force / Resource Designator	LWD	Leader	Number Persons	Drop Off PT./Time	Pick Up PT./Time	
6. Control Operations/Work Assignments:						
UNSTAFFED						
7. Special Instructions:						
8. Division/Group Communication Summary						
Function	Channel	RX Frequency N/W	RX Tone/NAC	TX Frequency N/W	TX Tone/NAC	Mode
COMMAND	7	170.4625 N	103.5	164.8250 N	103.5	A
TACTICAL	11	168.2500 N	136.5	168.2500 N	136.5	A
AIR TO GROUND	13	168.3375 N		168.3375 N		A
AIR TO GROUND	14	169.4625 N		169.4625 N		A
9. Prepared By (Resource Unit Leader)			Approved By (Planning Section Chief)		Date	Time
TERI PARVIN			JILL JOHNSON		10/19/2022	2000

Controlled Unclassified Information/Basic

AIR OPERATIONS SUMMARY CEDAR CREEK	Prepared By: Paul Balfour AOB	Prepared: 10/19/2022	Prepared Time: 1800 hrs.		
	2. OPERATIONAL PERIOD 10/20/2022	START TIME: 0700	END TIME: 1800	SUNRISE: 0729	SUNSET: 1819

<p>HIGH, SHIFTING, ERRATIC WINDS WILL AFFECT AIRCRAFT PERFORMANCE AND AVAILABILITY.</p> <p>TRACK WATER SOURCE USE ON COST SUMMARIES FOR EACH HELICOPTER.</p> <p>*LEND/LEASE TO NEW IA OUTSIDE THE DELEGATION *</p> <p>REQUEST FOR AERIAL DELIVERY OF LINE ORDERS THROUGH <u>COMMUNICATIONS</u>.</p> <p>REQUEST FOR AA OR HELICOPTERS THROUGH <u>HELIBASE ON COMMAND</u></p> <p>SCHEDULE FLIGHTS AT EARLIEST POSSIBLE TIME THROUGH 503-551-3973</p>	<p>4. MEDICAL A/C:</p> <p>Short Haul Helicopter Located KAPKA HB</p> <p>Follow IWI protocols in case of an emergency.</p>	<p>TFR 2/2874 (A-164) Good Thru Nov 1st</p> <p>Freq. 126.5250</p> <p>Ceiling 11,000 MSL</p> <p>0700-2400</p> <p>[Check FAA Website for Updates]</p>
--	--	---

6. PERSONNEL			7. FREQUENCIES			8. FIXED-WING Avail/ Type/ Make-Model/ N#/ Base							
AOBD	Paul Balfour	509-993-8739	A/A TFR		126.5250	ATGS Platforms: Available as needed from Pool							
ASGS	Albert Faria	907-419-5415	A/A (Briefing) A-28		132.4750								
ASGS(t)	Dan Sebern	970-210-1798	A/A (Rotor Wing) A-53		120.0250								
ATGS (Pool)	Justin Wood	541-420-2890				Airtankers: Order thru ATGS							
ATGS (Pool)	Todd Pease	541-408-2309	A/G West Primary A- 29		168.3375								
HEBM	Cameron Smith	208-870-8239	A/G West Secondary A-30		169.4625	Crescent Airport (5S2) Elevation 4819' 43 ° 31.967402N 121 ° 57.015535W AIS Hotsy at helibase for bucket/tank rinsing							
			A/G West Firing A-65		171.8375								
Kapka Helibase		503-551-3973											
UAO NW OR	Justin Vernon	541-224-3627				Email addresses: Finance: 2022.cedarcreek.finance@firenet.gov Helibase: 2022.cedarcreek.helibase@gmail.com							
UAO Central OR	Jessica Sherwood	458-218-2649											
Kapka Helibase	Primary Contact Number	503-551-3973	CTAF/UNICOM		122.9	KAPKA HELIBASE: 43 58.83N 121 36.59W EL 5920'							
			DECK	163.100 (Tone) rx/tx 136.5									
FAA N#	TY	MAKE/ MODEL	BASE	START	AVAIL	REMARKS	FAA N#	TY	MAKE/ MODEL	BASE	START	AVAIL	REMARKS
N854H	3	Bell 407	KAPKA	0700	0900	PSD/PAX A-162	HT1048Y	1	S-61A	KAPKA	0700	0900	Heli Tank A-190
N635CK	1	S-61	KAPKA	0700	0900	Bucket A-188							
N611CK	1	S-61	KAPKA	0700	0900	Bucket A-187							
N805RA	1	K-MAX	Crescent	0700	0900	Bucket A-197							

INCIDENT RADIO COMMUNICATIONS PLAN (ICS 205)

Controlled Unclassified Information//Basic

1. Incident Name:	2. Date/Time Prepared:	3. Operational Period: DAY	
CEDAR CREEK	Date: 10/19/2022 Time: 2000	Date/Time From: 10/20/2022 0700 THU	Date/Time To: 10/20/2022 2000 THU

4. Basic Radio Channel Use:										
Zone Group	Ch #	Function	Channel Name/Trunked Radio System Talkgroup	Assignment	RX Freq	RX Tone/NAC	TX Freq	TX Tone/NAC	Mode (A,D, or M)	Remarks
	1	COMMAND	CMD 1	DIV A / X / Y	170.0000 N	136.5	166.6750 N	136.5	A	LOCATED - HUCKLEBERRY MTN
	2	COMMAND	CMD 2	DIV S / T / W / X	170.6875 N	136.5	166.5750 N	136.5	A	LOCATED - WOLF MT
	3	COMMAND								
	4	COMMAND	CMD 4	DIV P / R	171.9000 N	136.5	165.9875 N	136.5	A	LOCATED - DAVIS MTN
	5	COMMAND	CMD 5	DIV P / R	170.0125 N	136.5	165.2500 N	136.5	A	LOCATED - CULTUS MTN
	6	COMMAND								
	7	COMMAND	HUCKLEBERRY	WIF FOREST NET	170.4625 N	103.5	164.8250 N	103.5	A	FOREST DISPATCH
	8	TACTICAL	TAC 8	DIV P / R	168.6000 N	136.5	168.6000 N	136.5	A	
	9	TACTICAL	TAC 9	DIV T	166.7250 N	136.5	166.7250 N	136.5	A	
	10	TACTICAL	TAC 10	DIV A / Y	166.7750 N	136.5	166.7750 N	136.5	A	
	11	TACTICAL	TAC 11	DIV W / X	168.2500 N	136.5	168.2500 N	136.5	A	
	12	TACTICAL	TAC 12	DIV S	171.1125 N	136.5	171.1125 N	136.5	A	SHARED TACTICAL
	13	AIR TO GROUND	A/G PRI	AIR TO GROUND PRIMARY	168.3375 N		168.3375 N		A	AIR OPS PRIMARY
	14	AIR TO GROUND	A/G SEC	AIR TO GROUND SECONDARY	169.4625 N		169.4625 N		A	AIR OPS SECONDARY
	15	AIR TO GROUND	VMED 29	EMERGENCY USE	155.3475 N		155.3475 N	156.7	A	STATE INTEROP FOR MED FLIGHTS
	16	AIR GUARD	AIRGUARD	AIR GUARD	168.6250 N		168.6250 N	110.9	A	EMERGENCY AIR CONTACT

5. Special Instructions: COMMUNICATION PHONE: (208) 891-8093 24-Hours

6. Prepared By (Communications Unit Leader)	Name: MISSY PARKER	Signature: <i>Missy Parker</i>
ICS 205	IAP Page	Date/Time: 10/19/2022 2000

Controlled Unclassified Information//Basic

INCIDENT RADIO COMMUNICATIONS PLAN (ICS 205)

Controlled Unclassified Information//Basic

1. Incident Name:	2. Date/Time Prepared:	3. Operational Period: DAY	
CEDAR CREEK	Date: 10/19/2022 Time: 2000	Date/Time From: 10/20/2022 0700 THU	Date/Time To: 10/20/2022 2000 THU

4. Basic Radio Channel Use:

Zone Group	Ch #	Function	Channel Name/Trunked Radio System Talkgroup	Assignment	RX Freq	RX Tone/NAC	TX Freq	TX Tone/NAC	Mode (A,D, or M)	Remarks
	1	COMMAND	DEF OD	SOUTHEAST	171.2625 N	103.5	164.1875 N	146.2	A	DESCHUTES ODELL
	2	COMMAND	HUCKLEBERRY	NORTHWEST	170.4625 N	103.5	164.8250 N	103.5	A	WIF FOREST NET
	3	COMMAND	WOLF	SOUTHWEST	170.4625 N	103.5	164.8250 N	192.8	A	WIF WOLF
	4	COMMAND	DEF LO C	NORTH CENTRAL	170.4750 N	103.5	163.1625 N	167.9	A	LOOKOUT CENTRAL/SOUTH
	6	TACTICAL	DEF TAC1	EAST	166.8875 N		166.8875 N		A	DESCHUTES FIRE TAC 1
	7	TACTICAL	DEF TAC2	EAST	167.6500 N		167.6500 N		A	DESCHUTES FIRE TAC 2
	8	TACTICAL	PROJ MDL	WEST TACTICAL PRIMARY	168.7750 N	103.5	168.7750 N	103.5	A	PROJECT MIDDLE FORK
	9	TACTICAL	PROJ MCK	WEST TACTICAL	168.7250 N	103.5	168.7250 N	103.5	A	PROJECT MCKENZIE
	10	TACTICAL	PROJ SRZ	WEST TACTICAL	166.5625 N	103.5	166.5625 N	103.5	A	SANTIAM RIVER PROJECT
	11	AIR TO GROUND	A/G 61	AIR TO GROUND EAST	169.2875 N		169.2875 N		A	INITIAL ATTACK AIR/GROUND PRIMARY EAST
	12	AIR TO GROUND	A/G 37	AIR TO GROUND WEST	167.3000 N		167.3000 N		A	INITIAL ATTACK AIR/GROUND SECONDARY EAST
	13	AIR TO GROUND	A/G 50	AIR TO GROUND PRI WEST	168.2875 N		168.2875 N		A	INITIAL ATTACK AIR/GROUND PRIMARY WEST
	14	AIR TO GROUND	A/G 09	AIR TO GROUND SEC WEST	166.9125 N		166.9125 N		A	INITIAL ATTACK AIR/GROUND SECONDARY WEST
	15	AIR TO GROUND	VMED 29	EMERGENCY USE	155.3475 N		155.3475 N	156.7	A	STATE INTEROP FOR MED FLIGHTS
	16	AIR GUARD	AIRGUARD	AIR GUARD	168.6250 N		168.6250 N	110.9	A	EMERGENCY AIR CONTACT

5. Special Instructions: COMMUNICATION PHONE: (208) 891-8093 24-Hours

6. Prepared By (Communications Unit Leader)	Name: PAUL NOA	Signature: <i>Paul Noa</i>
ICS 205	IAP Page	Date/Time: 10/19/2022 2000

Controlled Unclassified Information//Basic

Resource Advisor Message

Cedar Creek Fire

Mark Richardson, Lead READ, 412-618-7632, mark.richardson@usda.gov

Suppression Repair Standards

Waterbars

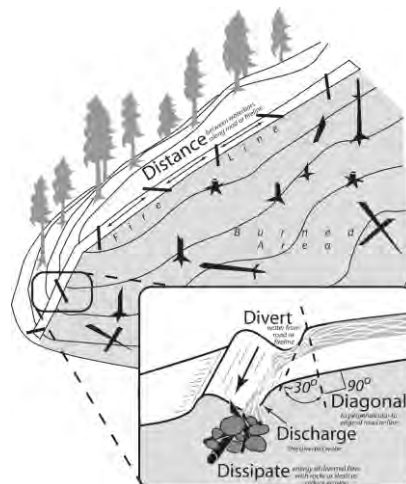
Height of water bar for handlines should average 6-12 inches. Height of machine-constructed water bars not to exceed 18 inches on slopes less than 40%. Height of machine-constructed water bars not to exceed 30 inches on slopes greater than 40%.

- Cut in the water bar – do not simply push up loose soil.
- Water bars should direct runoff away from the burned area where possible.
- Assure that the down slope end of the water bar is open and has adequate length to allow free flow of water off the fire line.
- Logs can be incorporated into water bars as long as they are embedded or anchored in a trench. Ensure fire end of log does not contact any organic material.
- Place slash below outlets of water bars to help slow runoff and collect sediment.

In selecting areas for establishing water bars the following should be considered:

- Locate bars at natural slope breaks. The idea is to move water off the fire line before it can build up enough energy to erode soil.
- When possible, locate bars where the outlet empties onto a resistant surface (i.e. rock or log debris).
- Locate bar outlets to provide maximum buffer distance to stream channel.
- Angle of water bars should be 20-45 degrees to the line.

Fire Line Slope %	Maximum Water Bar Spacing (feet)
2-5	300
6-10	200
11-15	150
16-20	100
21-35	75
36+	50



Dozer Line Repair

- Pull in berms and woody debris developed in construction of fireline. Distribute this material over the surface of the fire line, similar to the density of the surrounding area.
- Blockade lines at intersect with roads by placing logs and slash across the lines for 300 feet or site distance to minimize motorized use. Take extra care to return the entry points to a natural appearance that blends in with the surrounding landscape to the extent possible.
- At some line intersections with roads, it may be necessary to block access by constructing earthen berms and/or place boulders, heavy logs, slash, and other large vegetative material at the beginning of dozer line. These sites will be identified in Field Maps.
- Other blockage may be identified if lines exposed sensitive areas to future human intrusion.
- Lines requiring native seeding or weed-free mulching will **be identified in the Field Maps. If there isn't** enough debris to achieve 50% ground cover, REAFs may identify areas where weed free straw, or wood mulch is needed. Work with a resource advisor to implement seeding where necessary.

Chipping Standards

- Provide a 30- foot buffer of no chipping at water crossings or culverts.
- Do not place chips into road ditch.
- Do not chip onto a steep slope where chips will slide back into the ditch.
- Broadcast chipped material, ensuring that chips are no more than 4" deep.

DEMOB INSTRUCTIONS

Cedar Creek, Junction Camp, Big Swamp & Potter

AIR TRAVEL – All resources requiring air travel to their home unit must call DEMOB 72 hours in advance of departure date to make travel arrangements.

DEMOB LOCATIONS: All demobs will occur at the resource current locations (Oakridge ICP or Junction Camp). Please follow the steps in this order.

1. **IAP:** Refer to the Tentative Demob list for your assigned Demob date/time.
2. **WEED WASH:** All vehicles that have driven off the pavement need to complete a weed wash before leaving. Weed wash is located at Kokanee Staging near Oakridge ICP and Crescent Staging near Junction Camp.
3. **GROUND SUPPORT:** Equipment contractors need to pick up inspection forms at Ground Support. If damage or claims are reported an inspection may be performed. Ground Support will inform Demob when completed.
4. **COMMUNICATIONS AND SUPPLY:** Turn in all checked out items to the respective units. As items are returned, Demob will be notified.
5. **FINANCE:** Report to Finance and close out all final paperwork.
6. **DEMOB:** Once closed out in Finance, call Demob at 541-482-1331. If no answer, try again in a few minutes. If still no answer, then leave a message with the following information:
 - a. Your Resource Order Number
 - b. Name of Resource/Company
 - c. City/State you are traveling to
 - d. Estimate time of departure and arrival
 - i. Rest overnight (RON) location if applicable.

This is the last step before you start your travel.

Demob: 541-482-1331

2022.cedarcreek.demob@firenet.gov

Cedar Creek Fire

Tentative Demob List

Time Thursday 10/20/22

700	C-123	PLUMAS IHC	CRW1
645	S-1334	BLACKWOODS	SMED
630	S-279	REMS 1	MESU
1400	E-355	DUKE	FEL1
715	E-554	PARAGON WATER TENDERS	WTS2
730	E-571	MARK JONES TRUCKING	EXC3
745	E-575	JC OROZCO	ENG6
900	E-609	OUTBACK WILDFIRE	SKG2
800	E-5007	PATRICK TRUCKING	WTS2
1300	E-5230	K & R CONTRACTING	WTS2
1300	E-5376	TABLE MOUNTAIN FORESTRY	GRD2
EOS	O-900	STILL SMOKING, ALFRED	SECG
EOS	O-917.3	O'HARA, KATHRYN (VIRTUAL)	PIO1
EOS	O-954	KAUTT, JON	GSUL
EOS	O-986	LAMBERT, LISA	ABRO
800	O-1022	CRANMER, KYLE	HEQB
	O-1037.72	VENNING, LEE	MEDL
EOS	O-1084	FLORES, EDNA	ABRO
	O-1107	BLISS, SCOTT	SITL
800	O-5057	TIMBER TIPPER	FMOD

Time Friday 10/21/22

	E-318	BARNEY, JERRY - STAKESIDE	STK2
	O-986	LAMBERT, LISA	ABRO
	O-1037.58	FARIA, ALBERT	ASGS
	O-1037.64	WISDOM, AL	RCDM
	O-1123	SEBERN, DANIEL	ASGS
EOS	O-1174	DRINKWATER, HARLAN	SEC1
EOS	O-1175	BALENTINE, RYAN J	SEC1

Cedar Creek Fire Continued

Tentative Demob List

Time Saturday 10/22/22

600	C-120	LOMAKATSU ECOLOGICAL	CRW2
630	E-99	AMERICAN MEDICAL	AMB2
700	E-176	MED TRANSPORT	AMB2
900	E-586	ROBERT MURRAY	DOZ3
715	E-587	C & R REFORESTATION	ENG6
730	E-592	FIREMOG #441	ENG3
745	E-595	ENG3 FIREMOG	ENG3
800	E-596	TORRES CONTRACTING	ENG3
815	E-5520	MILLER TIMBER	WTS2
	O-905	PIEHL, TED	TFLD
	O-1006	O'NEAL, DAN	HEQB
	O-1037.52	MOAG, HUGH D	RADO
	O-1037.53	PACKARD, DEBRA S	TNSP
	O-1037.59	SALSKY, ISAIAH	DIVS
	O-1037.61	GRAHAM, PHILLIP JAMES	DIVS
	O-1037.67	MILLER, LAURA A	FDUL
800	O-1143	TURLEY, MARIANN	MEDL
700	O-1144	FRONTLINE - NEEL	EMPF
630	O-1145	FRONTLINE - KEMERER, KLYE	EMPF
645	O-1146	MEDIC 5	EMPF
1800	O-1147	VONK, BRANDLYN	PIO1
	O-1055	WILSON, MITCH	SOF2
	O-1058	HAUG, REBEKAH	SEC2
715	O-1171	ADVENTURE MEDICS	EMPF
	O-1075	CUT RITE INC FALLING MOD	FMOD
	O-1076	TIMBER TIPPER	FMOD
<p>Note: If no time is listed, you are free to DMOB around the pre-scheduled times as sections are available. EOS = End of shift</p>			

THANK YOU TRAINEES!

Your willingness to learn new skills and expand your IMT horizons is recognized and appreciated by this team. We hope you had a positive experience on this assignment.

Don't forget to check out with the Training Specialist prior to demobing from the fire. You have two options, in person at ICP or remote.

Once you check out and provide me with copies of your completed documents, I will ensure that the information is provided to your home unit.

Here is the QR code for checking out.



Questions? Feel free to call, text or email me:

Debra Packard
559-623-2983
debra_packard@firenet.gov

"If you are not willing to learn, no one can help you.

If you are determined to learn, no one can stop you." Anonymous



Human Resource Message

Cedar Creek Fire, 10/20/2022

Fatigue, Recovery & R&R



When you demob from this incident, and return home, please take the time to invest in your own recovery by making healthy choices when it comes to sleep, physical rest, diet, and hydration.

Fatigue without adequate recovery results in the following:

- **Reduced work capacity**
- **Reduced performance, such as a reduced ability to do a task or job**
- **Weight loss (muscle loss)**
- **Injury (muscle, tendon, ligament, etc.)**
- **Reduced physical coordination**
- **Increased risk acute illness (cold/flu)**



What are your habits around eating, drinking, working, and sleeping? Do they contribute to a healthy recovery between assignments?

Follow the link or QR code for more information regarding stress and fatigue.



<https://www.nwccg.gov/committee/6mfs/fatigue-stress>

Human Resource Specialist: Susie Manezes – 602-571-9327

CEDAR CREEK FIRE

TO: ALL PERSONNEL

FROM: OREGON DEPARTMENT OF CORRECTIONS

SUBJECT: WORKING AROUND OFFENDERS

- NO PERSON SHALL BE ALLOWED TO CARRY FIREARMS IN THE AREA WHERE OFFENDERS ARE WORKING. (It is acceptable to secure weapons in vehicles while entering the working vicinity of offenders)
- DO NOT GIVE OR TAKE ANYTHING FROM AN OFFENDER. Oregon Department of Correction's Offenders wear jeans with a DOC logo or Nomex pants with an orange stripe.
- DO NOT TAKE PHOTOS OR INTERVIEW OFFENDERS WITHOUT APPROVAL FROM INMATE LIAISON. (Signed consent forms required.)
- DO NOT DO ANY FAVORS FOR OFFENDERS. (Examples passing on a message, giving tobacco, asking for change, mailing a letter, using a phone, etc.)
- PROMPTLY REPORT ANY SUSPICIOUS ACT TO THE SUPERVISOR, DOC STAFF OR INMATE LIAISON. (The most innocent act/favor can have consequences that could negatively affect an offender for years.)
- USE OF TOBACCO PRODUCTS IS NOT ALLOWED. (Offenders are not allowed to use any tobacco products.)
- HARRASSMENT OF ANY KIND WILL NOT BE TOLERATED. (All harassment allegations involving offenders will be reported to Human Resources and the involved agencies representatives.)
- OFFENDERS On Oregon Correction CREWS ARE RATED AS MINIMUM CUSTODY.
- TREAT OFFENDERS WITH RESPECT BUT PRACTICE THE CORRECTIONAL DISTANCE. DON'T GET PERSONAL. (Offenders generally feel good with being part of the fire suppression effort, treat them with the same respect and dignity as other fire fighters but DO NOT GET PERSONAL.
- OFFENDERS ARE TRAINED IN WORK ETHICS AND JOB SKILLS. (Offenders are trained and experienced in their job assignments and work ethic. They are held accountable for job performance and behavior.)

ACKNOWLEDGE CREWS FOR A JOB WELL DONE, OFFENDERS DO GOOD WORK AND APPRECIATE THE RECOGNITION. Offenders need good professional role models as part of their rehabilitation process, consider their presence and set good examples by the context of your conversations and choice of language used.



Finance Message



Finance Email: 2022.cedarcreek.finance@firenet.gov

SUBJECT: *Include Key Word* **TIME** for Overhead, Crews & Cooperators

SUBJECT: *Include Key Word* **EQUIPMENT** for Contract Resources

OAKRIDGE FINANCE: 971-239-6880

Please Scan this QR code to send all required documents to finance or use the email below



FINANCE CHECK IN: 2022.cedarcreek.finance@firenet.gov

PLEASE ENSURE THE BELOW DOCUMENTS ARE EMAILED

Overhead, Crews & Cooperator Resources	Contract Resources
<ul style="list-style-type: none"> • Check-In: Crew Manifest, Cooperative Agreement (if applies), AD Hire Letter, Resource Order • Daily: Crew Time Report (CTR), Shift Tickets • Demob: Signed OF288, Final Equipment Use Invoice (Cooperator) If you don't have a way to sign you must come to finance. 	<ul style="list-style-type: none"> • Check-In: Resource Order, Contract/VIPR Agreement (make sure you have your UEI, Pre-Inspection • Daily: Shift Tickets, receipts (fuel issues, claims, etc.) • Demob: Contractor Evaluations, Final Shift Tickets and receipt(s) for Addition/Deductions, Post-Inspection, Final Signed Invoices If you don't have a way to sign you must come to finance

REMINDERS

- ★ PLEASE ENSURE YOU INCLUDE LOCATION OF WHERE YOU ARE WORKING (CEDAR CREEK DIVISION) ON THE CTR OR SHIFT TICKET. MAKE SURE C OR E # IS ON THE CTR OR SHIFT TICKET
- ★ PLEASE SHOW YOUR LUNCH BREAK
- ★ PLEASE USE MILITARY TIME (0001-2400)
- ★ WHEN CLAIMING HAZARD PAY YOU MUST INCLUDE THE SUPPRESSION ACTION BEING PERFORMED. THIS INCLUDES OPERATIONS WHICH DIRECTLY SUPPORT CONTROL OF FIRE (E.G., ACTIVITIES TO EXTINGUISH THE FIRE, FIREFIGHTING, GROUND SCOUTING, SPOT FIRE PATROLLING, SEARCH AND RESCUE OPERATIONS, AND BACKFIRING).
- ★ WHEN SIGNING YOUR OF-288 or OF-286 PLEASE DO NOT LOCK IT or PROTECT THE SIGNATURE, WE HAVE TO BE ABLE TO SIGN IT AND SEND YOU A COPY

The following resources need to contact Finance

OAKRIDGE FINANCE: 971-239-6880

C-130	PRC #1		
E-9	GRAYBACK FORESTRY		
E-71	CLAYS FAB		
E-75	M&M RESOURCES		
E-341	HATFIELD TRUCKING		
E-573	CA-CNF E328		
E-609	OUTBACK WILDFIRE		
E-5376	TABLE MOUNTAIN FORESTRY		
O-868	PACIFIC RIDGELINE		
O-925	BOYD, THOMAS G		
O-1095	MORRIS, BILL		
O-1103	RICHARDSON MARK E		
O-1120	KESSI, HEATH B		
O-1129	WALES MICHAEL TODD		
O-1183	WOODARD JERRY		
O-1188	HAYS MICHAEL R		
S-1546	JA MEDIA GROUP		

LOGISTICS (Hours of Operation & Information)**OAKRIDGE BASE CAMP**

Kitchen/Meals	0530 - 0900 1730 - 2030	Breakfast Dinner
Showers	0530 -1200 and 1430 - 2200	
Laundry	0500 - 1200 and 1700 - 2200	1.5 hour turn around

KOKANEE STAGING

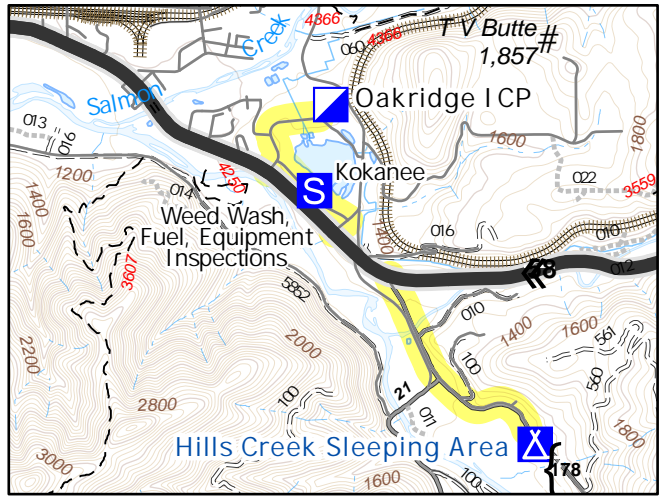
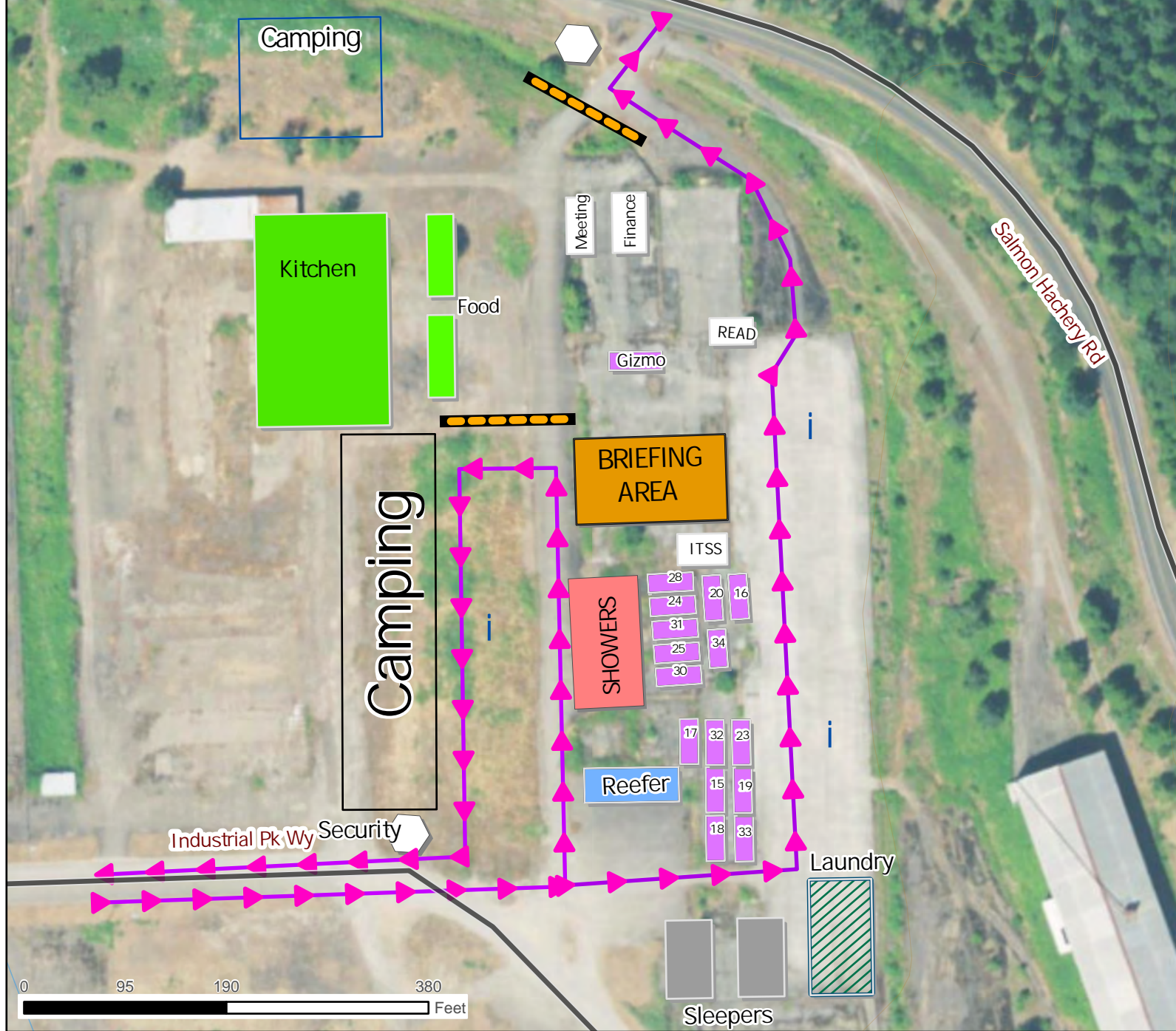
Ground Support	0530 - 2100	
Mechanic	0600 - 2100	
Inspections	0530 - 2100	
Weed Wash	0700 - 2100	
Supply	0530 - 2100	Email to 2022.cedarcreek.supply@gmail.com
Ordering**	0600 - 2100	Email to 2022.cedarcreek.ordering@firenet.gov
Fuel	0600 - 1100 1300 - 1800 1830 - 2100	Please fill locally if you have capabilities **Note: Please don't mix any fuel until ready to use. If you do mix it, remember to label it with mix ratio.

Please continue to be good stewards of the grounds and property that we are using.

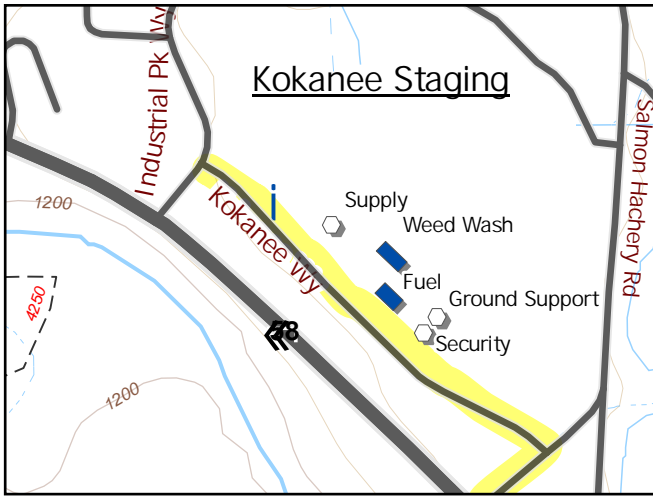
Pick up after yourselves when demobilizing and drive slowly when in camp.

Ordering Instructions:

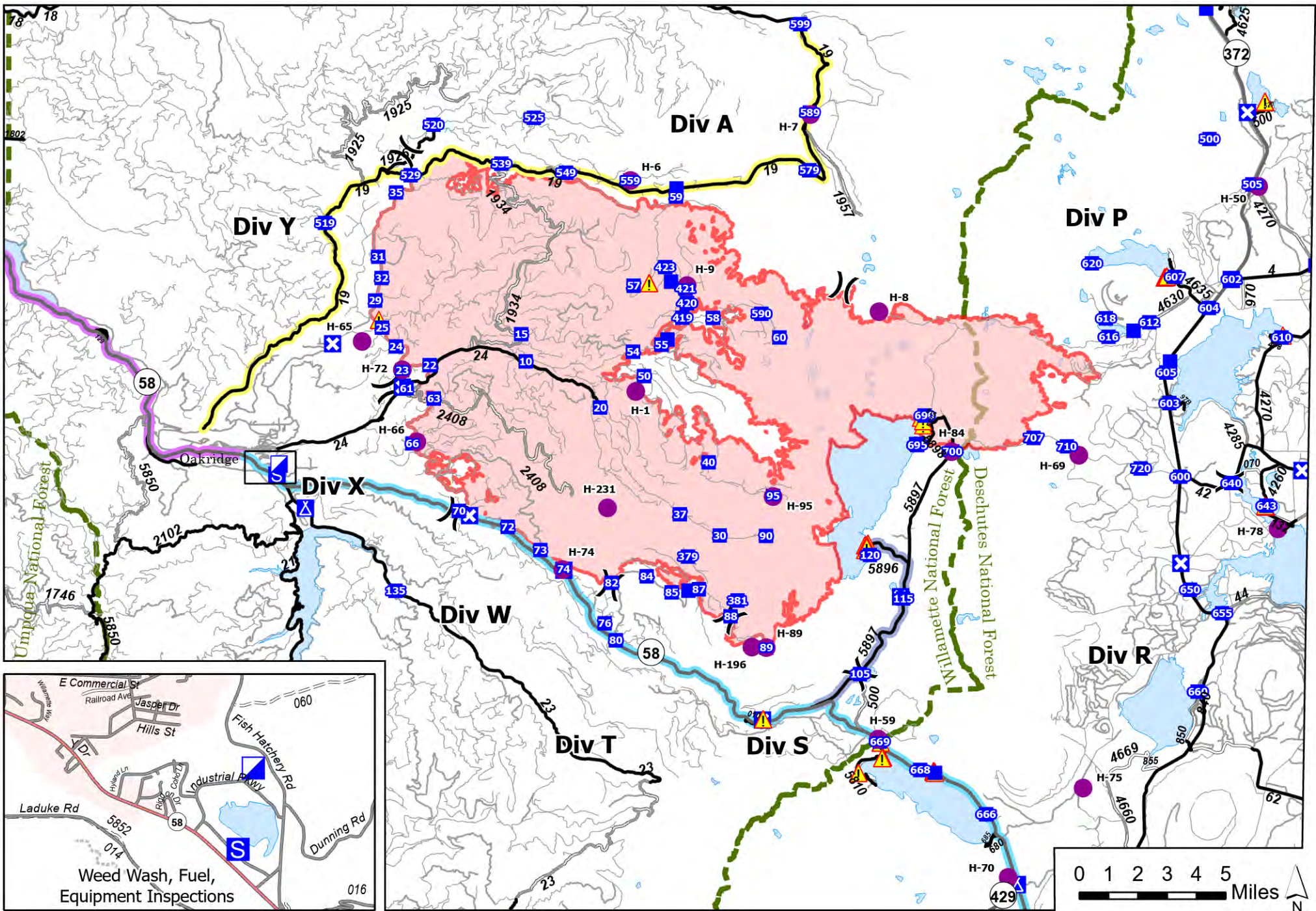
1. You must give a date and time needed with a minimum of 48 hours in the future, you can add in the comments "Or sooner if possible".
2. You must your put contact information on the 213.
3. Put both Ordering and Supply (in the "To" block) on your 213 so when it arrives at supply, so they know who to contact.
4. All orders must be approved and signed by Division or higher in Operations or Unit Leader or higher in other sections.



Trailers	Section
28	Operations
24 & 31	Medical
25 & 30	Comms
20	Safety
16	IC
34	Liason
17	PIO
32	Planning
15	HR
18	Facilities
23	GIS / Weather
19	Ordering / Food
33	Logistics



**Oakridge Facilities
Cedar Creek Fire
OR-WIF-220180**



Transportation

Cedar Creek
OR-WIF-220180
10/20/2022 24 Hour

- | | | | | |
|-------------------------|--------------|----------------|----------------------------------|--|
| ● Helispot | ■ Drop Point | ■ Staging Area | — Gravel Road | — Oakridge to DP 599 - 1 hr. 35 min. |
| ⌘ Division Break | ⊗ Closure | ▲ Hazard | — Dirt Roads | — Bristow State Park to Oakridge - 31 min. |
| ■ Incident Command Post | ▲ Camp | — Highway | — Unimproved Roads | — OR-58 to DP 120 - 26 min. |
| | | — Paved Road | — Oakridge to Crescent - 55 min. | |



COVID-19 Mitigations for Cedar Creek Fire

- Masks are not required indoors unless working in a county with a HIGH COVID-19 community level. Currently, Lane County community level is LOW (masking indoors is optional).
- Conduct daily verbal screening checks within crews, report any COVID-like symptoms to your direct supervisor. Supervisors should report any positive symptoms to the Medical Unit for next steps.
- Observe social distancing standards while waiting in line for food and limit contact with others outside of your crew in the food service line. If possible, send crew representatives to pick up meals.
- Practice good personal hygiene, wash hands frequently and disinfect high-traffic areas on a regular basis.
- Limit close contact between firefighters and the public as much as possible to prevent exposure and spread.





EMERGENCY PLAN INCIDENT WITHIN AN INCIDENT

ON SCENE INCIDENT COMMANDER

In the event of an accident or medical incident of any size, your primary responsibility is to ENSURE that the victim(s) receive prompt and effective Triage, Treatment, Extrication and Transport.

- **ENSURE THE MEDICAL INCIDENT REPORT IN THE INCIDENT ACTION PLAN IS BEING USED AND FOLLOWED- *IF DETERMINED TO BE A GREEN, DO NOT DECLARE EMERGENCY TRAFFIC AND ONLY COMPLETE LINE 1-4 ON MIR*.**
- Conduct size-up of the incident nature of accident, number type of resources involved, latitude and longitude location (DD°MMM.MM format): notify incident communications center and supervisor, request assistance as needed.
- Order and coordinate medical and support response to the accident.
- Evaluate special needs (law enforcement, haz mat, etc.).
- Clear the command frequency if medical emergency, coordinate with incident communications and air attack for air medical transportation needs.
- Preserve and photograph the scene for accident investigation.
- Remain aware of surroundings and the status of the main incident (delegate personnel to monitor the main fire) to ensure safety of medical treatment personnel.
- Until relieved, supervise and manage all personnel involved at the incident scene.

Incident/Project Name		1. Operational Period			
Cedar Creek-Potter/Big Swamp		October 20, 2022 0700-2000			
2. Ambulance Services					
Name	Complete Address	Phone	Advanced Life Support (ALS) Yes No		
Oakridge Fire & EMS	47592 Hwy 58 Oakridge, OR	Command Dispatch 541-682-3978	X		
Eugene Springfield Fire Dept	403 Main St. Springfield, OR	Command 541-682-5899	X		
Sun River Fire & Rescue	57475 Abbott Dr Sunriver, OR	Command	X		
La Pine Fire & Rescue	51590 Huntington Rd La Pine, OR	Command	X		
3. Air Ambulance Services					
Name	Phone	Location			
Emergency Air Transport	Command Secondary 911	Varies based on Availability Use VMED 29 air to ground			
4. Hospitals					
Name Complete Address	Coordinate Standard Degrees Decimal Minutes DD° MM.MMM' N - Lat DD° MM.MMM' W - Long	Travel Time From ICP Air Gnd	Phone	Helipad Yes No	Level of Care Facility
Sacred Heart Medical Center (Riverbend) 3333 Riverbend, Drive Springfield, OR	Lat: 44°04.881' N	15 mins 1 hr	541-222-6931	X	Level 2
	Long: 123°01.588' W				
Legacy Emanuel 2801 N Gantenbien Portland, OR	Lat: 45°32.59' N	30 mins 3 hrs	503-413-2200	X	Level 1 Trauma Burn Center
	Long: 122°40.16' W				
St Charles Medical Center 2500 NE Neff Rd Bend, OR	Lat: 44°04.102' N	45 mins 1.45 hrs	541-706-7777	X	Level 2
	Long: 121°16.053' W				
5. Division Branch Group	Capability		Personnel		
Div. A/Y	ALS Ambulance EMPF EMPF		Ambo 1 (E-99) Line Medic Kemerer (O-1145) Medic 1 (O-1215)		
Div. T	ALS Ambulance EMPF EMPF		Ambo 3 (E-257) Line Medic Richmond (O-1173) Line Medic Meade (O-1172)		
Div. S	ALS Ambulance EMPF EMPF		Ambo 3 (E-257) *Shared Resource Medic 1 (O-1215) Line Medic Luer (O-1146)		
Div. W/X	EMPF		Line Medic Neel (O-1144)		
Div. P/R	ALS Ambulance EMPF		Ambo 2 (E-176) Line Medic Gile (O-1171)		
Oakridge ICP	Diana Braun MEDL	Ambo 4	Mariann Turley MEDL-t		
6. Prepared By (Medical Unit Leader)	7. Date/Time	8. Reviewed By (Safety Officer)	9. Date/Time		
Diana Braun <i>Diana Braun</i>	10/19/2022 1800	Jack Cates <i>Jack Cates</i>	10/19/2022 1800		

MEDICAL PLAN (ICS 206 WF)

Controlled Unclassified Information//Basic

Medical Incident Report

FOR A NON-EMERGENCY INCIDENT, WORK THROUGH CHAIN OF COMMAND TO REPORT AND TRANSPORT INJURED PERSONNEL AS NECESSARY.

FOR A MEDICAL EMERGENCY: IDENTIFY ON SCENE INCIDENT COMMANDER BY NAME AND POSITION AND ANNOUNCE "MEDICAL EMERGENCY" TO INITIATE RESPONSE FROM IMT COMMUNICATIONS/DISPATCH.

Use the following items to communicate situation to communications/dispatch.

1. CONTACT COMMUNICATIONS / DISPATCH (Verify correct frequency prior to starting report)

Ex: "Communications, Div. Alpha. Stand-by for Emergency Traffic."

2. INCIDENT STATUS: Provide incident summary (including number of patients) and command structure.

Ex: "Communications, I have a Red priority patient, unconscious, struck by a falling tree. Requesting air ambulance to Forest Road 1 at (Lat./Long.) This will be the Trout Meadow Medical, IC is TFLD Jones. EMT Smith is providing medical care."

Severity of Emergency / Transport Priority	<input type="checkbox"/> RED / PRIORITY 1 Life or limb threatening injury or illness. Evacuation need is IMMEDIATE <i>Ex: Unconscious, difficulty breathing, bleeding severely, 2° – 3° burns more than 4 palm sizes, heat stroke, disoriented.</i> <input type="checkbox"/> YELLOW / PRIORITY 2 Serious Injury or illness. Evacuation may be DELAYED if necessary. <i>Ex: Significant trauma, unable to walk, 2° – 3° burns not more than 1-3 palm sizes.</i> <input type="checkbox"/> GREEN / PRIORITY 3 Minor Injury or illness. Non-Emergency transport <i>Ex: Sprains, strains, minor heat-related illness.</i>	
Nature of Injury or Illness & Mechanism of Injury		<i>Brief Summary of Injury or Illness (Ex: Unconscious, Struck by Falling Tree)</i>
Transport Request		<i>Air Ambulance / Short Haul/Hoist Ground Ambulance / Other</i>
Patient Location		<i>Descriptive Location & Lat. / Long. (WGS84)</i>
Incident Name		<i>Geographic Name + "Medical" (Ex: Trout Meadow Medical)</i>
On-Scene Incident Commander		<i>Name of on-scene IC of Incident within an Incident (Ex: TFLD Jones)</i>
Patient Care		<i>Name of Care Provider (Ex: EMT Smith)</i>

3. INITIAL PATIENT ASSESSMENT: Complete this section for each patient as applicable (start with the most severe patient)

Patient Assessment: See IRPG page 106

Treatment:

4. TRANSPORT PLAN:

Evacuation Location (if different): (Descriptive Location (drop point, intersection, etc.) or Lat. / Long.) Patient's ETA to Evacuation Location:

Helispot / Extraction Site Size and Hazards:

5. ADDITIONAL RESOURCES / EQUIPMENT NEEDS:

Example: Paramedic/EMT, Crews, Immobilization Devices, AED, Oxygen, Trauma Bag, IV/Fluid(s), Splints, Rope rescue, Wheeled litter, HAZMAT, Extrication

6. COMMUNICATIONS: Identify State Air/Ground EMS Frequencies and Hospital Contacts as applicable

Function	Channel Name/Number	Receive (RX)	Tone/NAC *	Transmit (TX)	Tone/NAC *
COMMAND					
AIR-TO-GRND					
TACTICAL					

7. CONTINGENCY: Considerations: If primary options fail, what actions can be implemented in conjunction with primary evacuation method? Be thinking ahead.

8. ADDITIONAL INFORMATION: Updates/Changes, etc.

REMEMBER: Confirm ETA's of resources ordered. Act according to your level of training. Be Alert. Keep Calm. Think Clearly. Act Decisively.

Controlled Unclassified Information//Basic