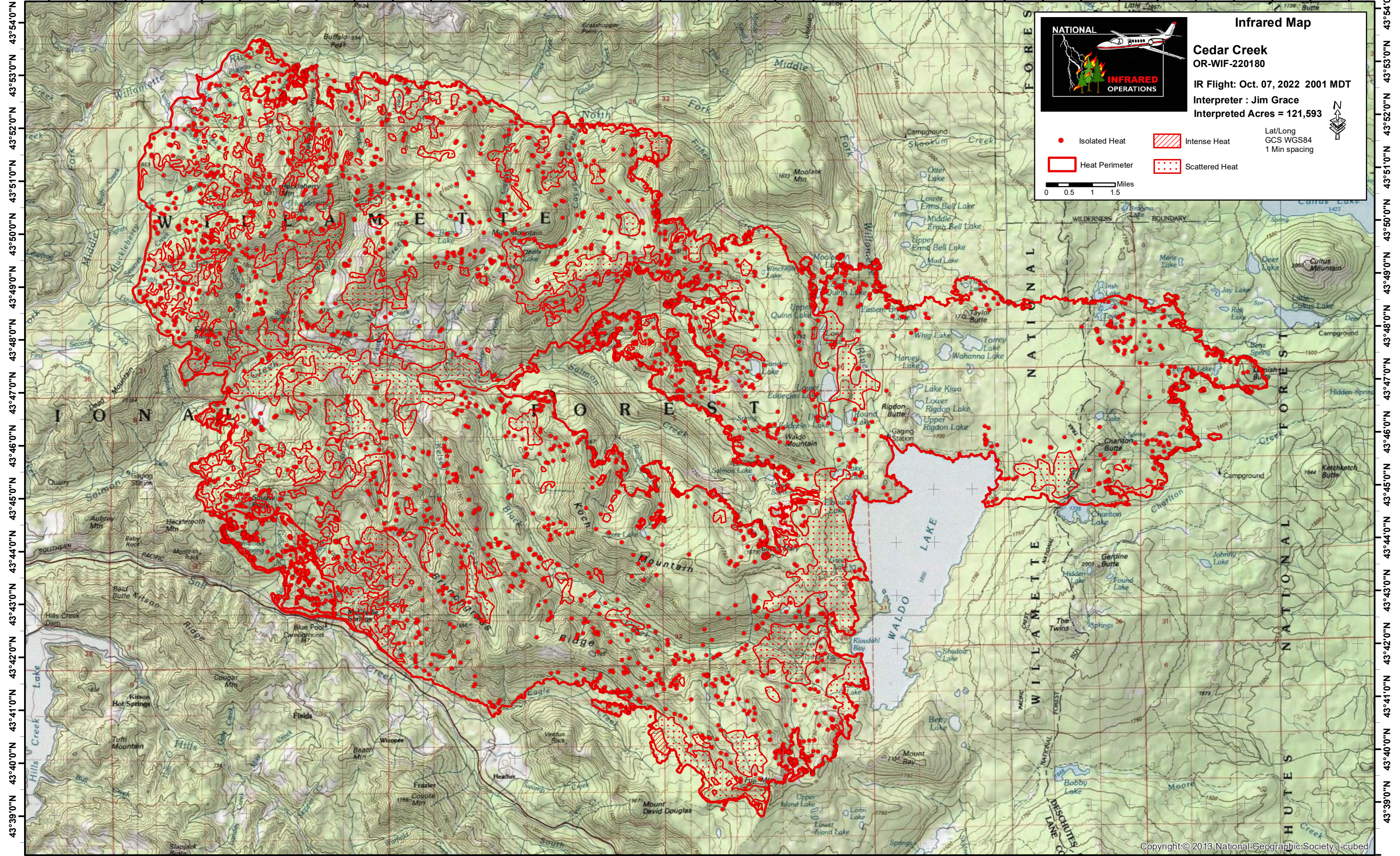


122°25'0"W 122°23'0"W 122°21'0"W 122°19'0"W 122°17'0"W 122°15'0"W 122°13'0"W 122°11'0"W 122°9'0"W 122°7'0"W 122°5'0"W 122°3'0"W 122°1'0"W 121°59'0"W 121°57'0"W 121°55'0"W 121°53'0"W 121°51'0"W



Infrared Map

**Cedar Creek
OR-WIF-220180**

IR Flight: Oct. 07, 2022 2001 MDT
Interpreter : Jim Grace
Interpreted Acres = 121,593

Lat/Long
GCS WGS84
1 Min spacing

NATIONAL INFRARED OPERATIONS

● Isolated Heat Heat Perimeter
 Intense Heat Scattered Heat

0 0.5 1 1.5 Miles

Copyright © 2013 National Geographic Society, i-cubed

122°25'0"W 122°23'0"W 122°21'0"W 122°19'0"W 122°17'0"W 122°15'0"W 122°13'0"W 122°11'0"W 122°9'0"W 122°7'0"W 122°5'0"W 122°3'0"W 122°1'0"W 121°59'0"W 121°57'0"W 121°55'0"W 121°53'0"W 121°51'0"W