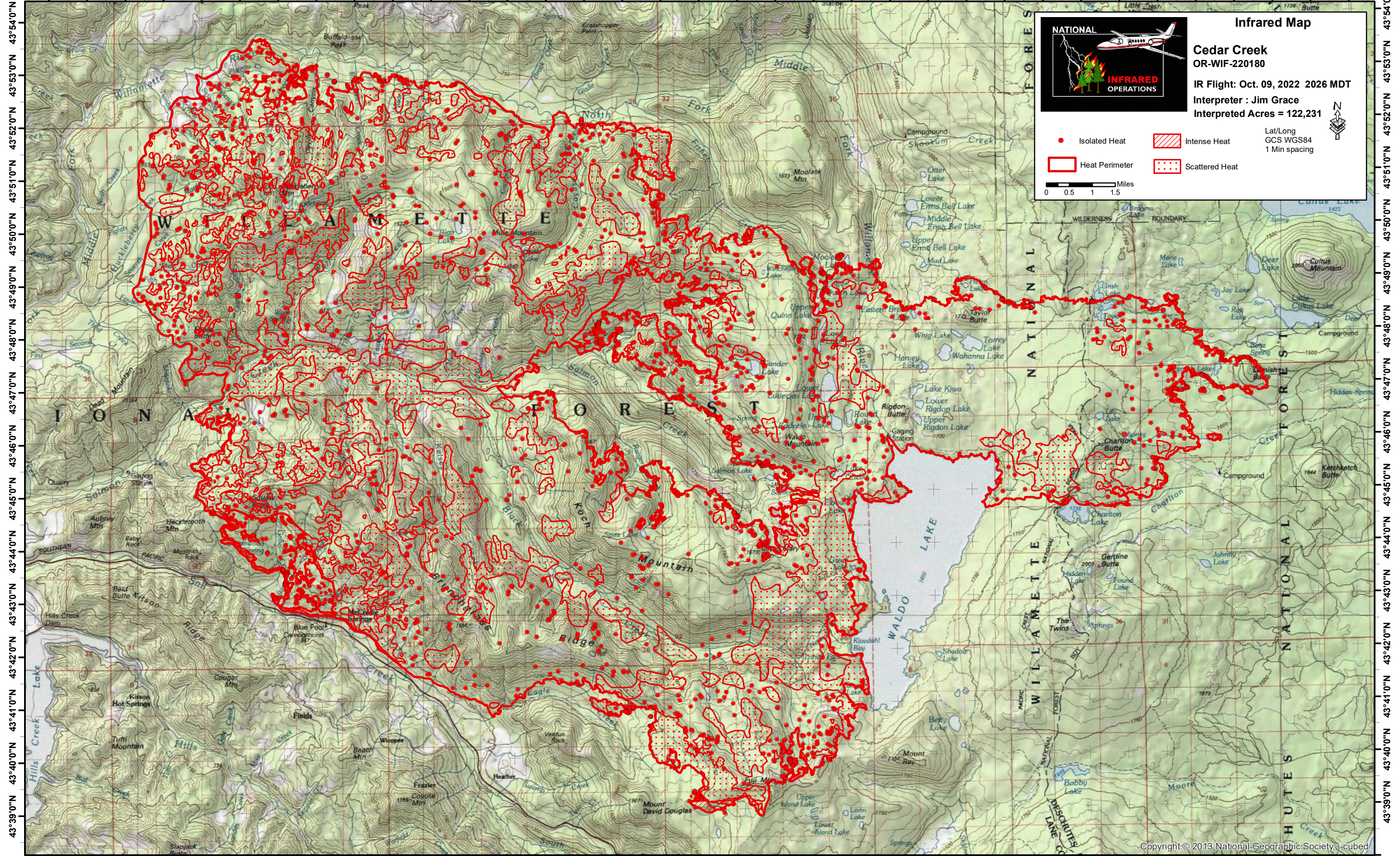


122°25'0"W 122°23'0"W 122°21'0"W 122°19'0"W 122°17'0"W 122°15'0"W 122°13'0"W 122°11'0"W 122°9'0"W 122°7'0"W 122°5'0"W 122°3'0"W 122°1'0"W 121°59'0"W 121°57'0"W 121°55'0"W 121°53'0"W 121°51'0"W



Infrared Map

**Cedar Creek
OR-WIF-220180**

IR Flight: Oct. 09, 2022 2026 MDT
Interpreter : Jim Grace
Interpreted Acres = 122,231

Lat/Long
GCS WGS84
1 Min spacing

NATIONAL INFRARED OPERATIONS

● Isolated Heat Intense Heat
 Heat Perimeter Scattered Heat

0 0.5 1 1.5 Miles

Copyright © 2013 National Geographic Society, i-cubed

122°25'0"W 122°23'0"W 122°21'0"W 122°19'0"W 122°17'0"W 122°15'0"W 122°13'0"W 122°11'0"W 122°9'0"W 122°7'0"W 122°5'0"W 122°3'0"W 122°1'0"W 121°59'0"W 121°57'0"W 121°55'0"W 121°53'0"W 121°51'0"W

43°39'0"N 43°40'0"N 43°41'0"N 43°42'0"N 43°43'0"N 43°44'0"N 43°45'0"N 43°46'0"N 43°47'0"N 43°48'0"N 43°49'0"N 43°50'0"N 43°51'0"N 43°52'0"N 43°53'0"N 43°54'0"N

43°39'0"N 43°40'0"N 43°41'0"N 43°42'0"N 43°43'0"N 43°44'0"N 43°45'0"N 43°46'0"N 43°47'0"N 43°48'0"N 43°49'0"N 43°50'0"N 43°51'0"N 43°52'0"N 43°53'0"N 43°54'0"N