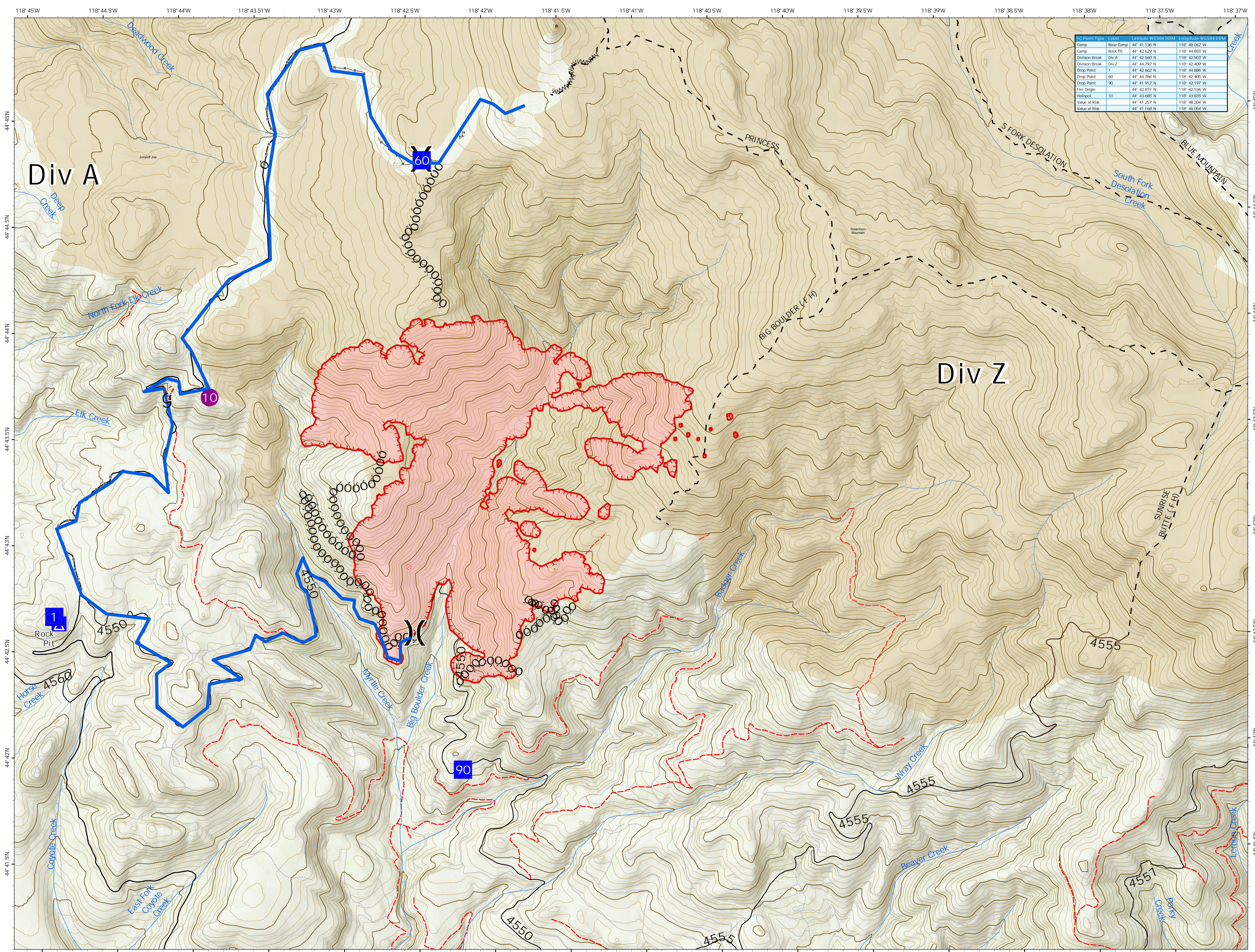




Drop Point Type	Label	Latitude WGS84 DDM	Longitude WGS84 DDM
Camp	Base Camp	44° 41.130' N	118° 48.042' W
Camp	Rock Pit	44° 42.629' N	118° 44.859' W
Division Break	Div A	44° 42.563' N	118° 42.503' W
Division Break	Div Z	44° 44.792' N	118° 42.409' W
Drop Point	1	44° 42.662' N	118° 44.856' W
Drop Point	60	44° 44.788' N	118° 42.425' W
Drop Point	90	44° 41.912' N	118° 42.197' W
Fire Origin	44° 42.871' N	118° 42.536' W	
Helispot	10	44° 43.685' N	118° 43.835' W
Value at Risk	44° 41.257' N	118° 48.204' W	
Value at Risk	44° 41.168' N	118° 48.054' W	



0 118° 45'W 0.25 118° 44.5'W 0.5 118° 44'W 118° 43.5'W 118° 43'W 118° 42.5'W 118° 42'W 118° 41.5'W 118° 41'W 118° 40.5'W 118° 40'W 118° 39.5'W 118° 39'W 118° 38.5'W 118° 38'W 118° 37.5'W

Miles

ORMAF
8/27/2022 0837
IR
North American 1983 Datum, Lat/Long
Grid

Wildfire Daily Fire Perimeter	Camp	Completed Hand Line	200 foot contours	Roads_major	Primary
Helispot	Fire Origin	Completed Road as Line	Roadless	Roads_Collector	Oregon Statewide structures DOGAM
Division Break	Uncontained	Completed Fuel Break	40 foot contours	Off Forest Road	Roads-closed
Drop Point	Completed Dozer Line	Trail	NHDFlowline_100K	Local	DE - DECOMMISSIONED