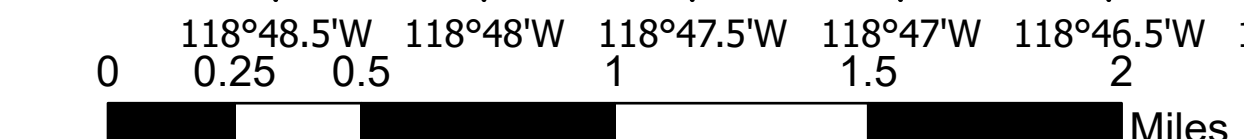
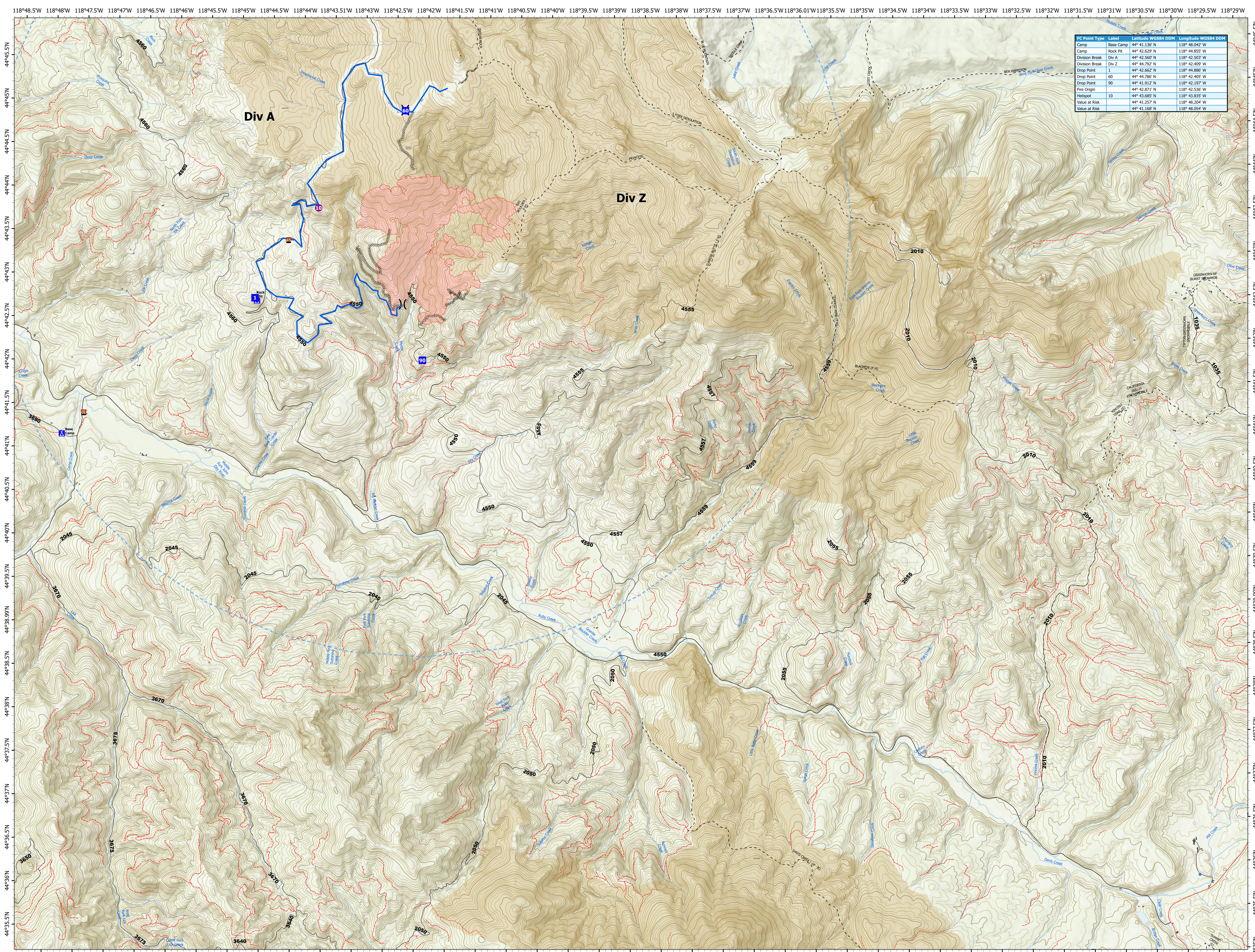




IC Point Type	Label	Latitude WGS84 DDM	Longitude WGS84 DDM
Camp	Base Camp	44° 41.130' N	118° 48.042' W
Camp	Rock Pit	44° 42.629' N	118° 44.855' W
Division Break	Div A	44° 42.560' N	118° 42.503' W
Division Break	Div Z	44° 44.792' N	118° 42.409' W
Drop Point	1	44° 42.662' N	118° 44.886' W
Drop Point	60	44° 44.786' N	118° 42.465' W
Drop Point	90	44° 41.912' N	118° 42.197' W
Fire Origin		44° 42.871' N	118° 42.536' W
Helispot	10	44° 43.685' N	118° 43.835' W
Value at Risk		44° 41.257' N	118° 48.204' W
Value at Risk		44° 41.168' N	118° 48.054' W



ORMAF  
8/27/2022 0713  
IR  
North American 1983 Datum, Lat/Long  
Grid

- Helispot
- Fire Origin
- Completed Hand Line
- 40 foot contours
- NHDFlowline\_100K
- Off Forest Road
- Roads-closed
- Division Break
- Value at Risk
- Completed Road as Line
- 200 foot contours
- SH - STATE HIGHWAY
- Local
- Completed Dozer Line
- Temporary Flight Restriction
- Roadless
- Roads\_major
- Roads
- Primary
- Roads\_Collector
- ARTERIAL
- Trail
- Oregon Statewide structures DOGAMI

