

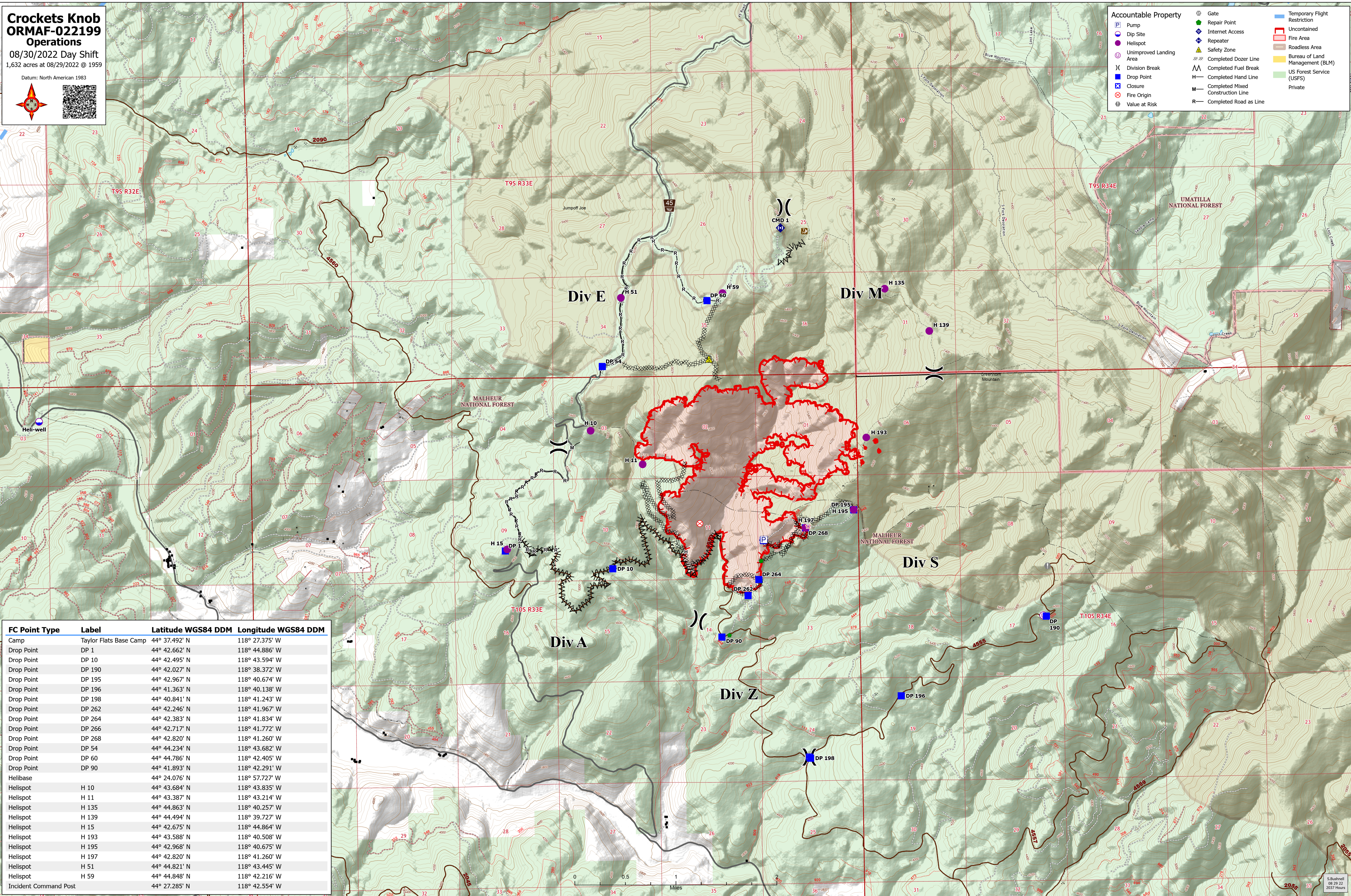
**Crocketts Knob
ORMAF-022199
Operations**

08/30/2022 Day Shift

1,632 acres at 08/29/2022 @ 1959



Accountable Property	
	Gate
	Repair Point
	Dip Site
	Helispot
	Unimproved Landing Area
	Division Break
	Closure
	Fire Origin
	Value at Risk
	Internet Access
	Repeater
	Safety Zone
	Completed Dozer Line
	Completed Fuel Break
	Completed Hand Line
	Completed Mixed Construction Road
	Completed Road as Line
	Temporary Flight Restriction
	Uncontained
	Fire Area
	Roadless Area
	Bureau of Land Management (BLM)
	US Forest Service (USFS)
	Private



FC Point Type	Label	Latitude WGS84 DDM	Longitude WGS84 DDM
Camp	Taylor Flats Base Camp	44° 37.492' N	118° 27.375' W
Drop Point	DP 1	44° 42.662' N	118° 44.886' W
Drop Point	DP 10	44° 42.495' N	118° 43.594' W
Drop Point	DP 190	44° 42.027' N	118° 38.372' W
Drop Point	DP 195	44° 42.967' N	118° 40.674' W
Drop Point	DP 196	44° 41.363' N	118° 40.138' W
Drop Point	DP 198	44° 40.841' N	118° 41.243' W
Drop Point	DP 262	44° 42.246' N	118° 41.967' W
Drop Point	DP 264	44° 42.383' N	118° 41.834' W
Drop Point	DP 266	44° 42.717' N	118° 41.772' W
Drop Point	DP 268	44° 42.820' N	118° 41.260' W
Drop Point	DP 54	44° 44.234' N	118° 43.682' W
Drop Point	DP 60	44° 44.786' N	118° 42.405' W
Drop Point	DP 90	44° 41.893' N	118° 42.291' W
Helibase		44° 24.076' N	118° 57.727' W
Helispot	H 10	44° 43.684' N	118° 43.835' W
Helispot	H 11	44° 43.387' N	118° 43.214' W
Helispot	H 135	44° 44.863' N	118° 40.257' W
Helispot	H 139	44° 44.494' N	118° 39.727' W
Helispot	H 15	44° 42.675' N	118° 44.864' W
Helispot	H 193	44° 43.588' N	118° 40.508' W
Helispot	H 195	44° 42.968' N	118° 40.675' W
Helispot	H 197	44° 42.820' N	118° 41.260' W
Helispot	H 51	44° 44.821' N	118° 43.445' W
Helispot	H 59	44° 44.848' N	118° 42.216' W
Incident Command Post		44° 27.285' N	118° 42.554' W

