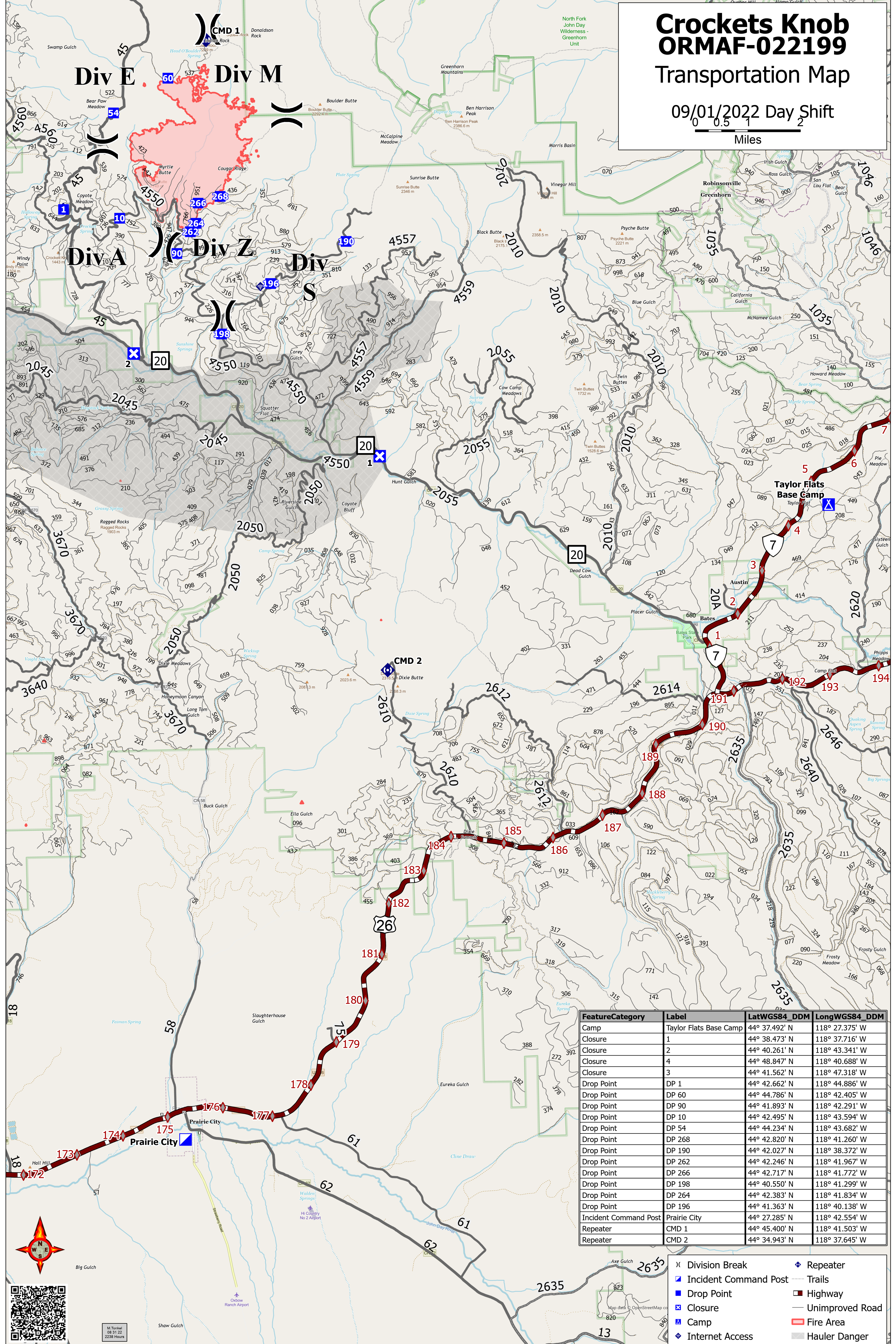


# Crocketts Knob ORMAF-022199 Transportation Map

09/01/2022 Day Shift



FeatureCategory	Label	LatWGS84_DDM	LongWGS84_DDM
Camp	Taylor Flats Base Camp	44° 37.492' N	118° 27.375' W
Closure	1	44° 38.473' N	118° 37.716' W
Closure	2	44° 40.261' N	118° 43.341' W
Closure	4	44° 48.847' N	118° 40.688' W
Closure	3	44° 41.562' N	118° 47.318' W
Drop Point	DP 1	44° 42.662' N	118° 44.886' W
Drop Point	DP 60	44° 44.786' N	118° 42.405' W
Drop Point	DP 90	44° 41.893' N	118° 42.291' W
Drop Point	DP 10	44° 42.495' N	118° 43.594' W
Drop Point	DP 54	44° 44.234' N	118° 43.682' W
Drop Point	DP 268	44° 42.820' N	118° 41.260' W
Drop Point	DP 190	44° 42.027' N	118° 38.372' W
Drop Point	DP 262	44° 42.246' N	118° 41.967' W
Drop Point	DP 266	44° 42.717' N	118° 41.772' W
Drop Point	DP 198	44° 40.550' N	118° 41.299' W
Drop Point	DP 264	44° 42.383' N	118° 41.834' W
Drop Point	DP 196	44° 41.363' N	118° 40.138' W
Incident Command Post	Prairie City	44° 27.285' N	118° 42.554' W
Repeater	CMD 1	44° 45.400' N	118° 41.503' W
Repeater	CMD 2	44° 34.943' N	118° 37.645' W

- ⌘ Division Break
- ⬢ Incident Command Post
- ⬢ Drop Point
- ⊠ Closure
- ⬢ Camp
- ⬢ Internet Access
- ⬢ Repeater
- Trails
- Highway
- Unimproved Road
- Fire Area
- Hauler Danger



M: Tonkall  
08/31/22  
2238 Hours