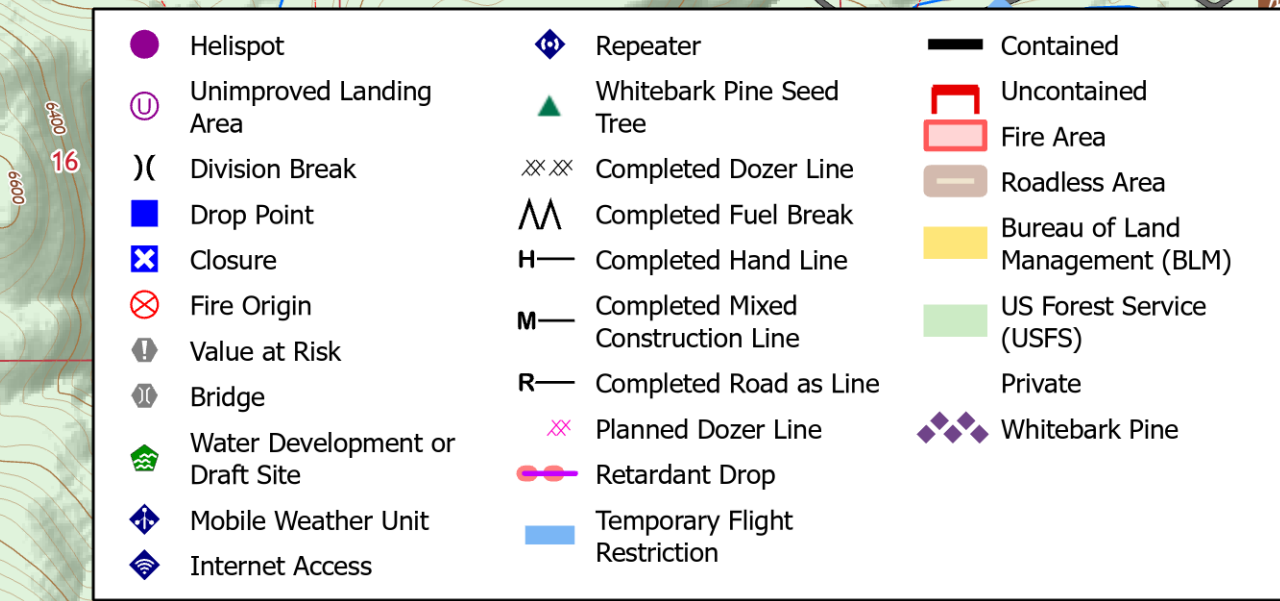


**Crocketts Knob  
ORMAF-022199  
Operations**

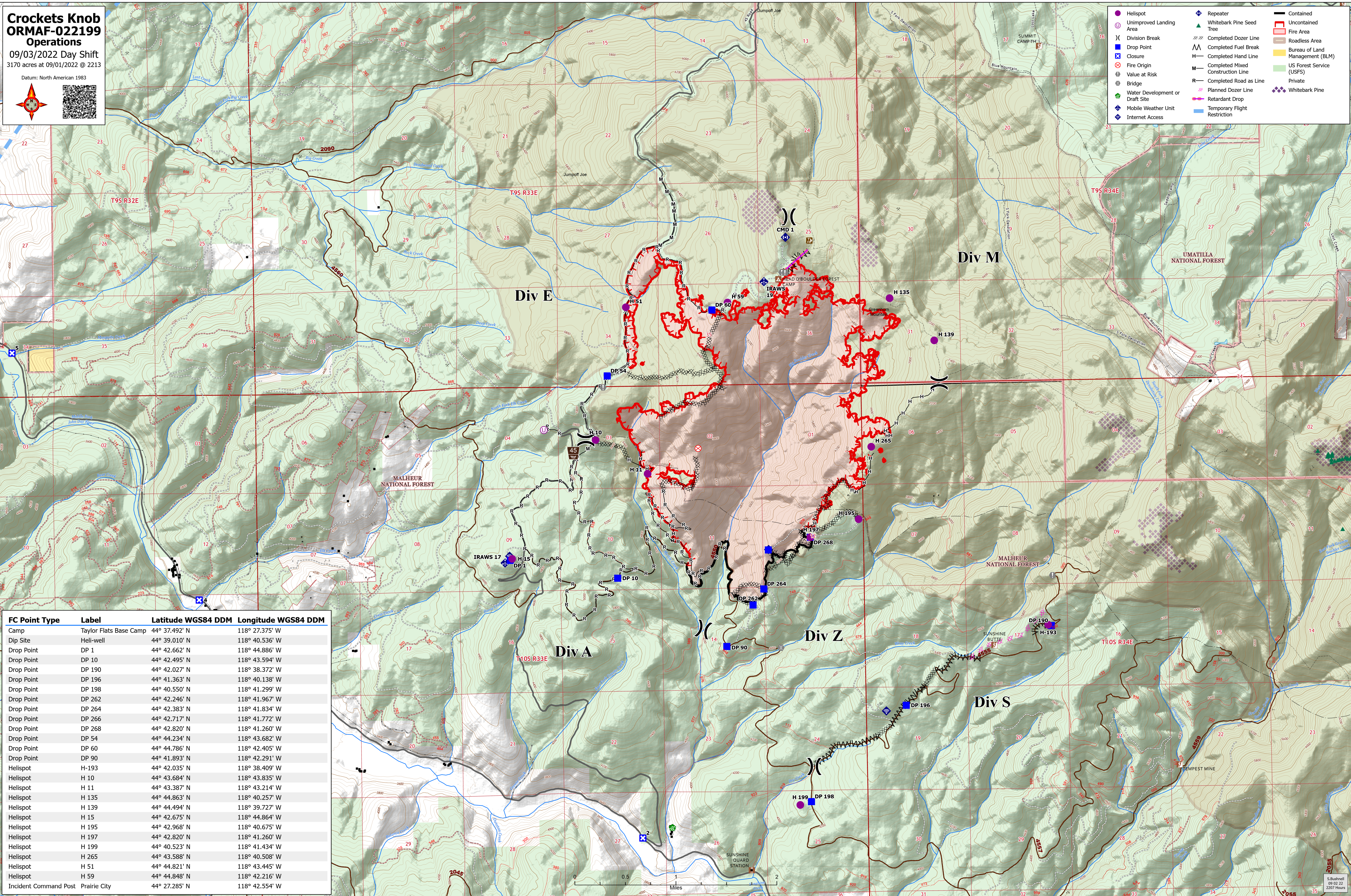
09/03/2022 Day Shift

3170 acres at 09/01/2022 @ 2213

Datum: North American 1983

- Helispot
- Unimproved Landing Area
- ⌋ Division Break
- ⓧ Drop Point
- ⓧ Closure
- ⊗ Fire Origin
- ⊕ Value at Risk
- ⊙ Bridge
- 🌳 Water Development or Draft Site
- 📶 Mobile Weather Unit
- 📶 Internet Access
- 📶 Repeater
- 🌲 Whitebark Pine Seed Tree
- ⌘ Completed Dozer Line
- ⌘ Completed Fuel Break
- ⌘ Completed Hand Line
- ⌘ Completed Mixed Construction Line
- ⌘ Completed Road as Line
- ⌘ Planned Dozer Line
- ⌘ Retardant Drop
- ⌘ Temporary Flight Restriction
- ▭ Contained
- ▭ Uncontained
- ▭ Fire Area
- ▭ Roadless Area
- ▭ Bureau of Land Management (BLM)
- ▭ US Forest Service (USFS)
- ▭ Private
- 🌲 Whitebark Pine



FC Point Type	Label	Latitude WGS84 DDM	Longitude WGS84 DDM
Camp	Taylor Flats Base Camp	44° 37.492' N	118° 27.375' W
Dip Site	Heli-well	44° 39.010' N	118° 40.536' W
Drop Point	DP 1	44° 42.662' N	118° 44.886' W
Drop Point	DP 10	44° 42.495' N	118° 43.594' W
Drop Point	DP 190	44° 42.027' N	118° 38.372' W
Drop Point	DP 196	44° 41.363' N	118° 40.138' W
Drop Point	DP 198	44° 40.550' N	118° 41.299' W
Drop Point	DP 262	44° 42.246' N	118° 41.967' W
Drop Point	DP 264	44° 42.383' N	118° 41.834' W
Drop Point	DP 266	44° 42.717' N	118° 41.772' W
Drop Point	DP 268	44° 42.820' N	118° 41.260' W
Drop Point	DP 54	44° 44.234' N	118° 43.682' W
Drop Point	DP 60	44° 44.786' N	118° 42.405' W
Drop Point	DP 90	44° 41.893' N	118° 42.291' W
Helispot	H-193	44° 42.035' N	118° 38.409' W
Helispot	H 10	44° 43.684' N	118° 43.835' W
Helispot	H 11	44° 43.387' N	118° 43.214' W
Helispot	H 135	44° 44.863' N	118° 40.257' W
Helispot	H 139	44° 44.494' N	118° 39.727' W
Helispot	H 15	44° 42.675' N	118° 44.864' W
Helispot	H 195	44° 42.968' N	118° 40.675' W
Helispot	H 197	44° 42.820' N	118° 41.260' W
Helispot	H 199	44° 40.523' N	118° 41.434' W
Helispot	H 265	44° 43.588' N	118° 40.508' W
Helispot	H 51	44° 44.821' N	118° 43.445' W
Helispot	H 59	44° 44.848' N	118° 42.216' W
Incident Command Post	Prairie City	44° 27.285' N	118° 42.554' W