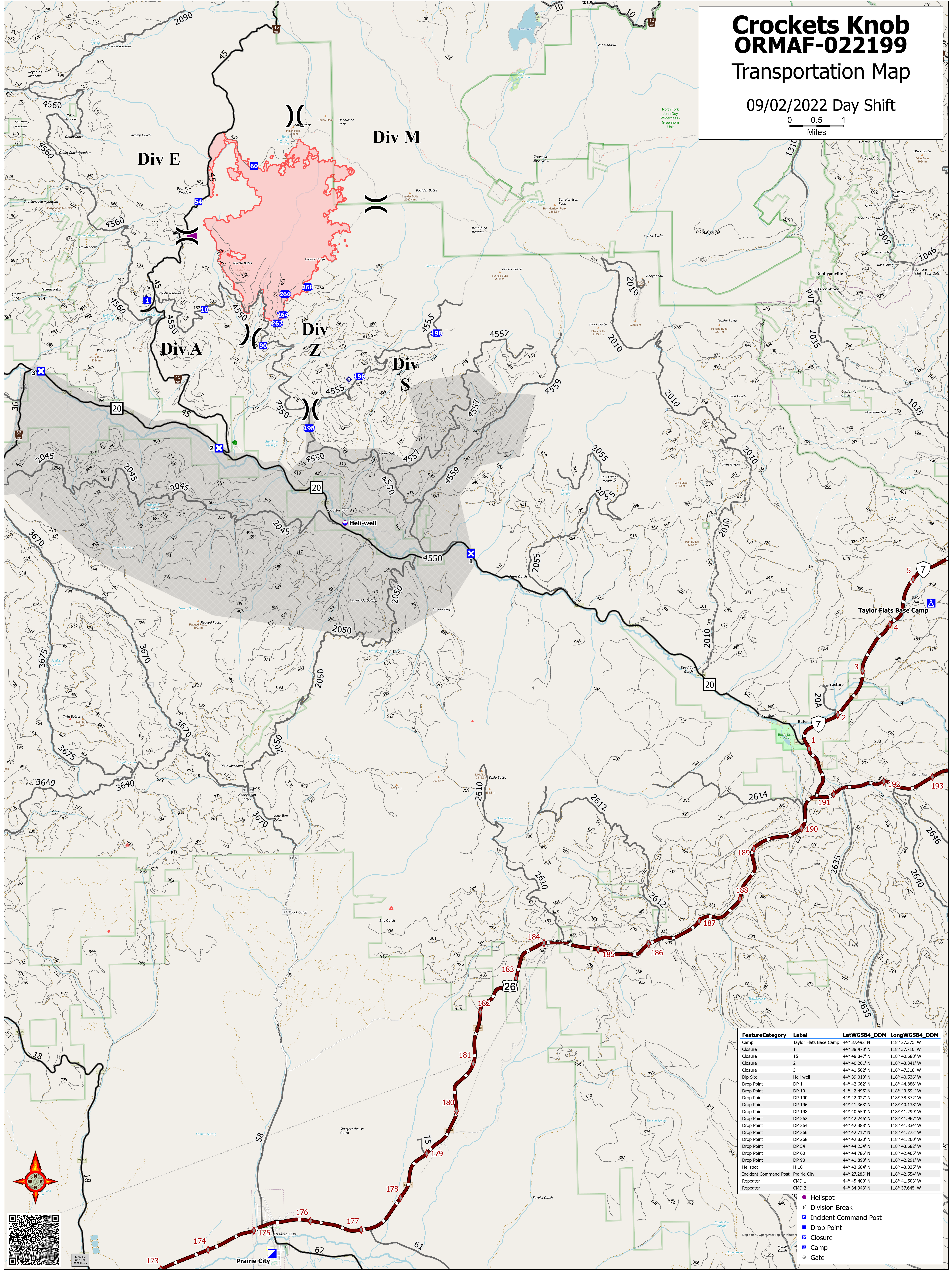
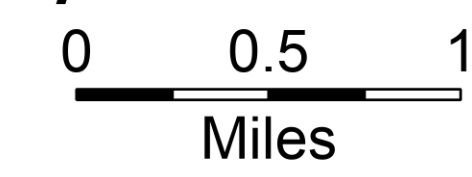


Crocket's Knob ORMAF-022199 Transportation Map

09/02/2022 Day Shift



| FeatureCategory | Label | LatWGS84_DDM | LongWGS84_DDM |
|-----------------------|------------------------|---------------|----------------|
| Camp | Taylor Flats Base Camp | 44° 37.492' N | 118° 27.375' W |
| Closure | 1 | 44° 38.473' N | 118° 37.716' W |
| Closure | 15 | 44° 48.847' N | 118° 40.688' W |
| Closure | 2 | 44° 40.261' N | 118° 43.341' W |
| Closure | 3 | 44° 41.562' N | 118° 47.318' W |
| Dip Site | Heli-well | 44° 39.010' N | 118° 40.536' W |
| Drop Point | DP 1 | 44° 42.662' N | 118° 44.886' W |
| Drop Point | DP 10 | 44° 42.495' N | 118° 43.594' W |
| Drop Point | DP 190 | 44° 42.027' N | 118° 38.372' W |
| Drop Point | DP 196 | 44° 41.363' N | 118° 40.138' W |
| Drop Point | DP 198 | 44° 40.550' N | 118° 41.299' W |
| Drop Point | DP 262 | 44° 42.246' N | 118° 41.967' W |
| Drop Point | DP 264 | 44° 42.383' N | 118° 41.834' W |
| Drop Point | DP 266 | 44° 42.717' N | 118° 41.772' W |
| Drop Point | DP 54 | 44° 42.820' N | 118° 41.260' W |
| Drop Point | DP 54 | 44° 44.234' N | 118° 43.682' W |
| Drop Point | DP 60 | 44° 44.786' N | 118° 42.405' W |
| Drop Point | DP 90 | 44° 41.893' N | 118° 42.291' W |
| Hellspot | H 10 | 44° 43.684' N | 118° 43.835' W |
| Incident Command Post | Prairie City | 44° 27.285' N | 118° 42.554' W |
| Repeater | CMD 1 | 44° 45.400' N | 118° 41.503' W |
| Repeater | CMD 2 | 44° 34.943' N | 118° 37.645' W |

- Heli-spot
- ⌘ Division Break
- Incident Command Post
- Drop Point
- Closure
- Camp
- Gate



Map data © OpenStreetMap contributors