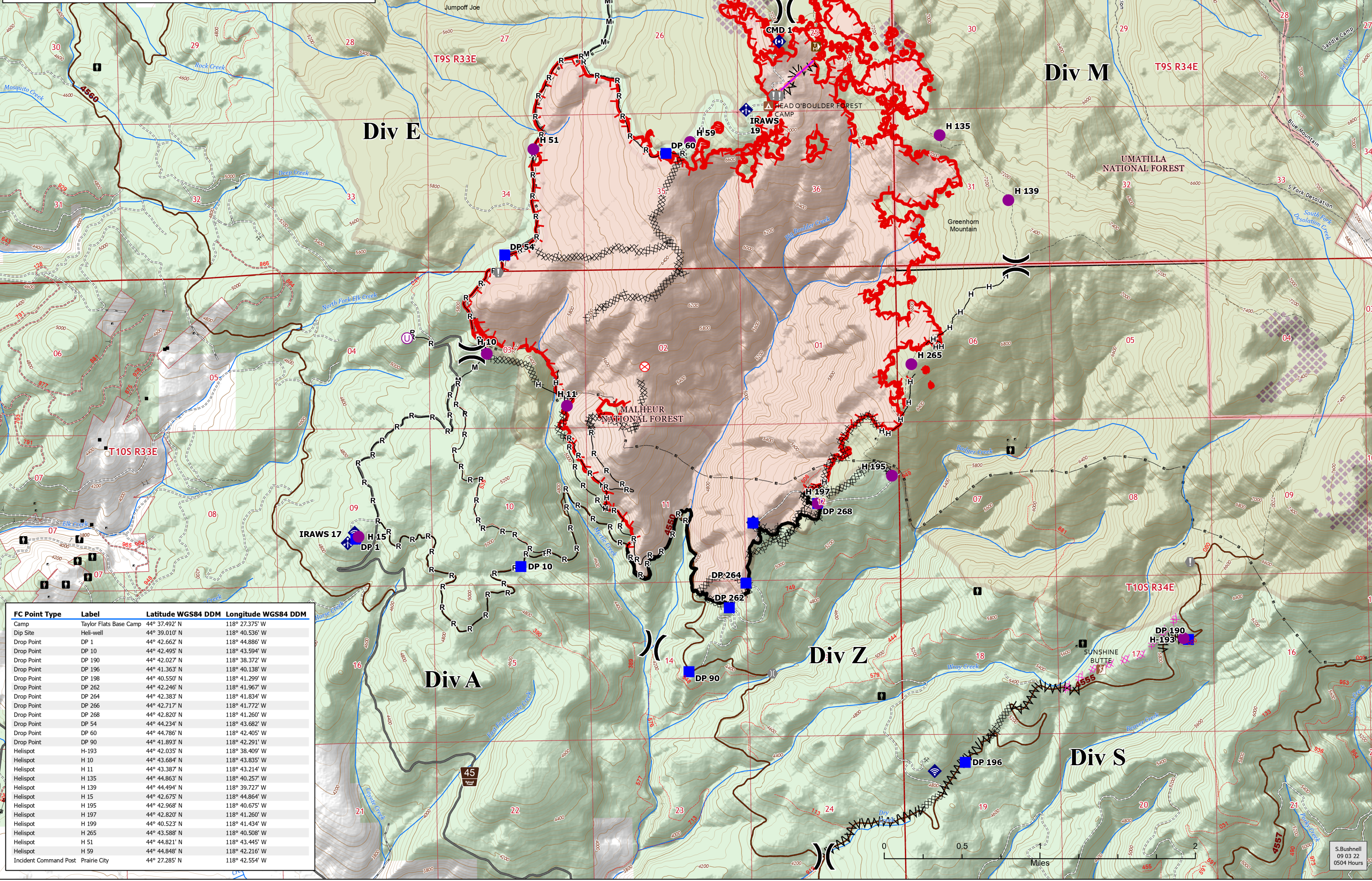


Helispot	Internet Access	Contained
Unimproved Landing Area	Repeater	Uncontained
Division Break	Completed Dozer Line	Fire Area
Drop Point	Completed Fuel Break	Roadless Area
Closure	Completed Hand Line	US Forest Service (USFS)
Fire Origin	Completed Mixed Construction Line	Private
Value at Risk	Completed Road as Line	Whitebark Pine
Bridge	Planned Dozer Line	
Mobile Weather Unit	Retardant Drop	



FC Point Type	Label	Latitude WGS84 DDM	Longitude WGS84 DDM
Camp	Taylor Flats Base Camp	44° 37.492' N	118° 27.375' W
Dip Site	Heli-well	44° 39.010' N	118° 40.536' W
Drop Point	DP 1	44° 42.662' N	118° 44.886' W
Drop Point	DP 10	44° 42.495' N	118° 43.594' W
Drop Point	DP 190	44° 42.027' N	118° 38.372' W
Drop Point	DP 196	44° 41.363' N	118° 40.138' W
Drop Point	DP 198	44° 40.550' N	118° 41.299' W
Drop Point	DP 262	44° 42.246' N	118° 41.967' W
Drop Point	DP 264	44° 42.383' N	118° 41.834' W
Drop Point	DP 266	44° 42.717' N	118° 41.772' W
Drop Point	DP 268	44° 42.820' N	118° 41.260' W
Drop Point	DP 54	44° 44.234' N	118° 43.682' W
Drop Point	DP 60	44° 44.786' N	118° 42.405' W
Drop Point	DP 90	44° 41.893' N	118° 42.291' W
Helispot	H-193	44° 42.035' N	118° 38.409' W
Helispot	H 10	44° 43.684' N	118° 43.835' W
Helispot	H 11	44° 43.387' N	118° 43.214' W
Helispot	H 135	44° 44.863' N	118° 40.257' W
Helispot	H 139	44° 44.494' N	118° 39.727' W
Helispot	H 15	44° 42.675' N	118° 44.864' W
Helispot	H 195	44° 42.968' N	118° 40.675' W
Helispot	H 197	44° 42.820' N	118° 41.260' W
Helispot	H 199	44° 40.523' N	118° 41.434' W
Helispot	H 265	44° 43.588' N	118° 40.508' W
Helispot	H 51	44° 44.821' N	118° 43.445' W
Helispot	H 59	44° 44.848' N	118° 42.216' W
Incident Command Post	Prairie City	44° 27.285' N	118° 42.554' W