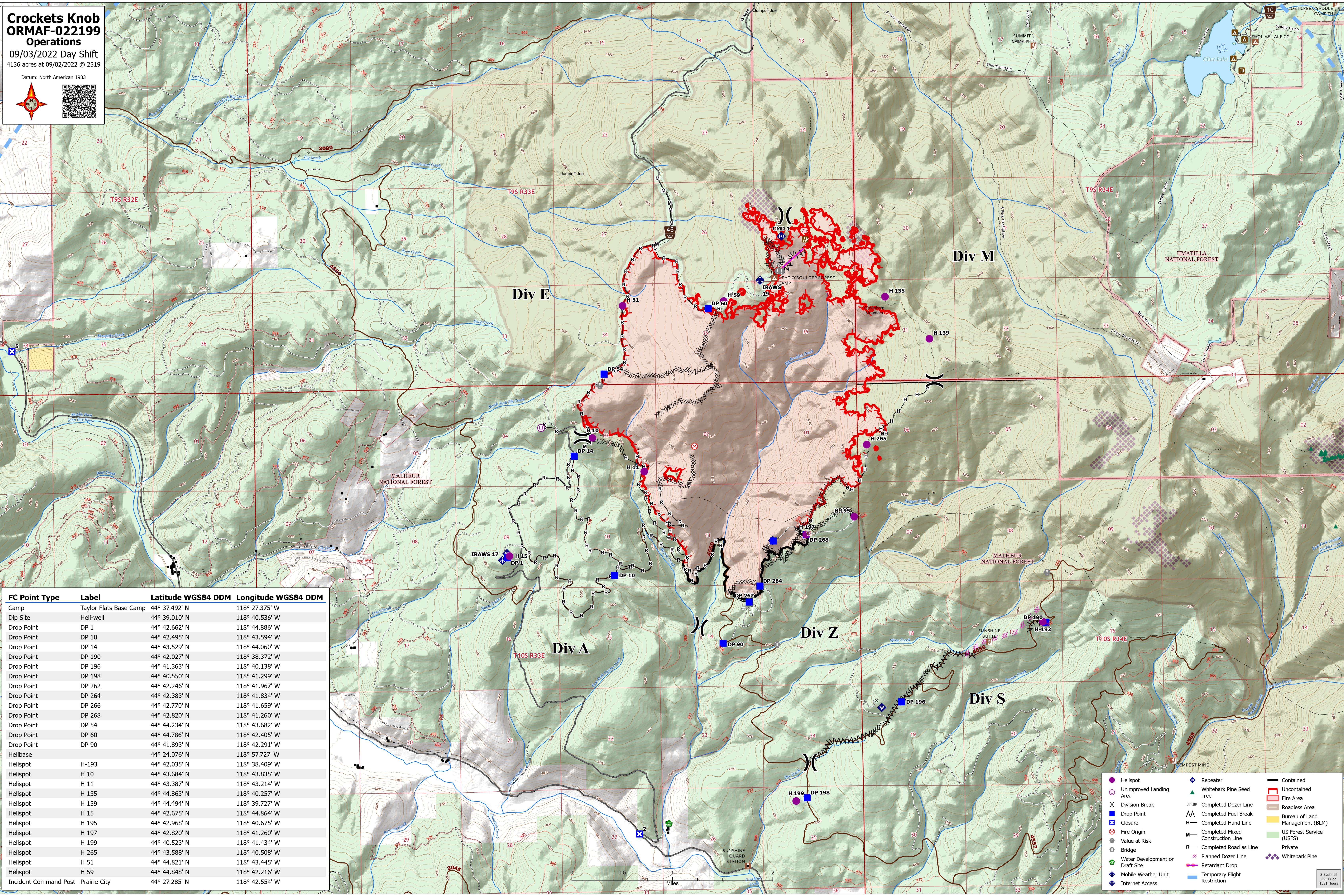


**Crocketts Knob
ORMAF-022199
Operations**

09/03/2022 Day Shift
4136 acres at 09/02/2022 @ 2319

Datum: North American 1983



FC Point Type	Label	Latitude WGS84 DDM	Longitude WGS84 DDM
Camp	Taylor Flats Base Camp	44° 37.492' N	118° 27.375' W
Dip Site	Heli-well	44° 39.010' N	118° 40.536' W
Drop Point	DP 1	44° 42.662' N	118° 44.886' W
Drop Point	DP 10	44° 42.495' N	118° 43.594' W
Drop Point	DP 14	44° 43.529' N	118° 44.060' W
Drop Point	DP 190	44° 42.027' N	118° 38.372' W
Drop Point	DP 196	44° 41.363' N	118° 40.138' W
Drop Point	DP 198	44° 40.550' N	118° 41.299' W
Drop Point	DP 262	44° 42.246' N	118° 41.967' W
Drop Point	DP 264	44° 42.383' N	118° 41.834' W
Drop Point	DP 266	44° 42.770' N	118° 41.659' W
Drop Point	DP 268	44° 42.820' N	118° 41.260' W
Drop Point	DP 54	44° 44.234' N	118° 43.682' W
Drop Point	DP 60	44° 44.786' N	118° 42.405' W
Drop Point	DP 90	44° 41.893' N	118° 42.291' W
Helibase		44° 24.076' N	118° 57.727' W
Helispot	H-193	44° 42.035' N	118° 38.409' W
Helispot	H 10	44° 43.684' N	118° 43.835' W
Helispot	H 11	44° 43.387' N	118° 43.214' W
Helispot	H 135	44° 44.863' N	118° 40.257' W
Helispot	H 139	44° 44.494' N	118° 39.727' W
Helispot	H 15	44° 42.675' N	118° 44.864' W
Helispot	H 195	44° 42.968' N	118° 40.675' W
Helispot	H 197	44° 42.820' N	118° 41.260' W
Helispot	H 199	44° 40.523' N	118° 41.434' W
Helispot	H 265	44° 43.588' N	118° 40.508' W
Helispot	H 51	44° 44.821' N	118° 43.445' W
Helispot	H 59	44° 44.848' N	118° 42.216' W
Incident Command Post	Prairie City	44° 27.285' N	118° 42.554' W

Helispot	Repeater	Contained
Unimproved Landing Area	Whitebark Pine Seed Tree	Uncontained
Division Break	Completed Dozer Line	Fire Area
Drop Point	Completed Fuel Break	Roadless Area
Closure	Completed Hand Line	Bureau of Land Management (BLM)
Fire Origin	Completed Mixed Construction Line	US Forest Service (USFS)
Value at Risk	Completed Road as Line	Private
Bridge	Planned Dozer Line	Whitebark Pine
Water Development or Draft Site	Retardant Drop	
Mobile Weather Unit	Temporary Flight Restriction	
Internet Access		